

## Base Map Online Store – Ordering Raster Base Maps

Orders for topographic or raster base maps, digital orthophoto mapsheets, TRIM digital vector data mapsheets, digital airphotos and other products can now be placed via the **Base Map Online Store** at <http://www.geobc.gov.bc.ca> with VISA, Mastercard or AMEX. The application can be launched directly from <http://openmaps.gov.bc.ca/imfows13/imf.jsp?site=idt>.

**Note:** Supported browsers are: MS Internet Explorer 6 or higher, Netscape 8/9 or Mozilla Firefox 3.0.

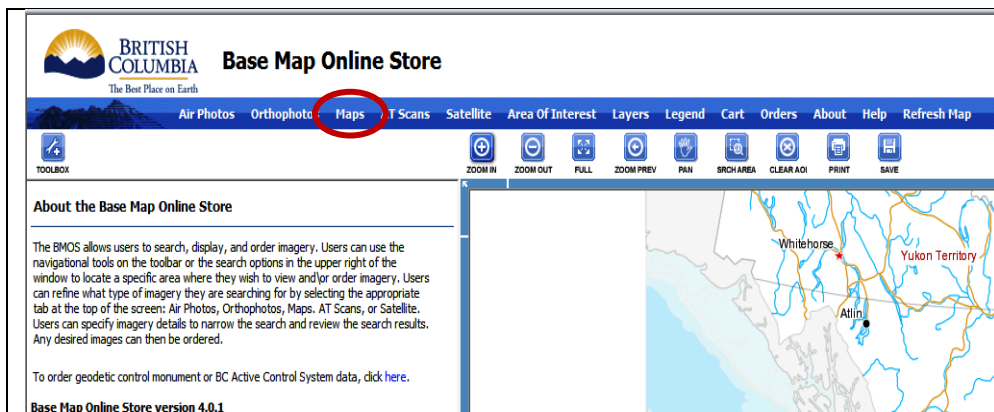
A valid **Business BCeID** or **Basic BCeID** (<http://www.bceid.ca>) or **IDIR** account (for BC Government staff) is required to login. A Basic BCeID can be setup online in a few minutes.

Navigate to your area of interest using **Place Name, Mapsheet or Address** in the search field in the upper right hand corner of the screen or by using the **Pan** and **Zoom** tools or by using the **Area of Interest** selection tools on the main menu toolbar.

With the exception of Hillshade and Digital Elevation Models, all Topographic and Raster Base maps are free products.

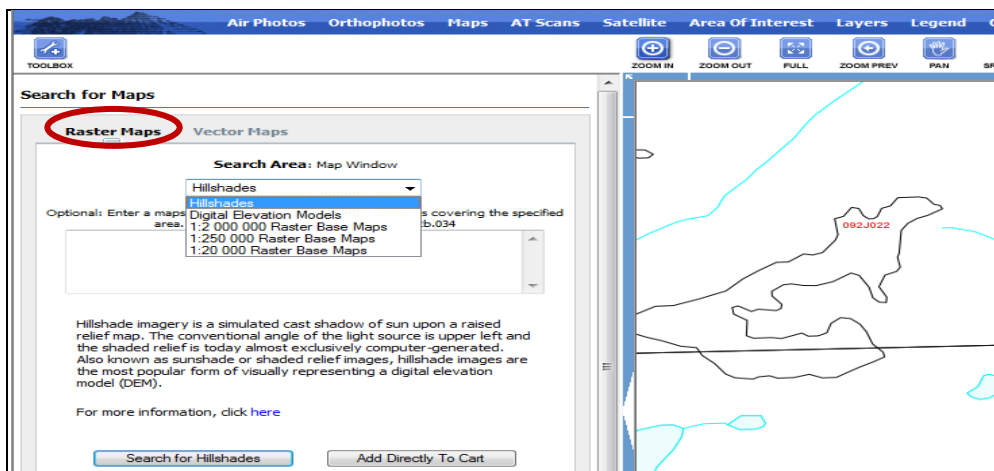
Once you have determined your area of interest, select the following:

**Click the Maps tab**



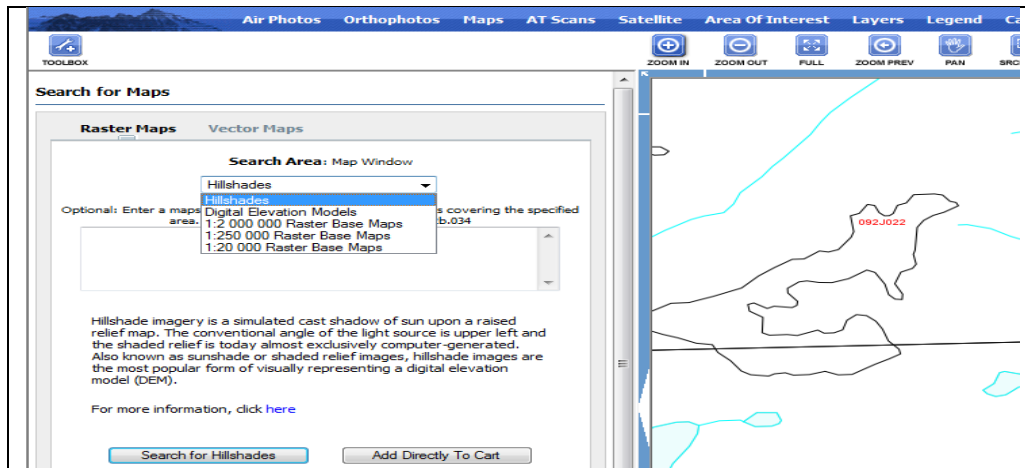
**Click the Raster Maps tab**

**Note:** Raster Base maps are free except for Digital Elevation Models (DEMs) and Hillshades.



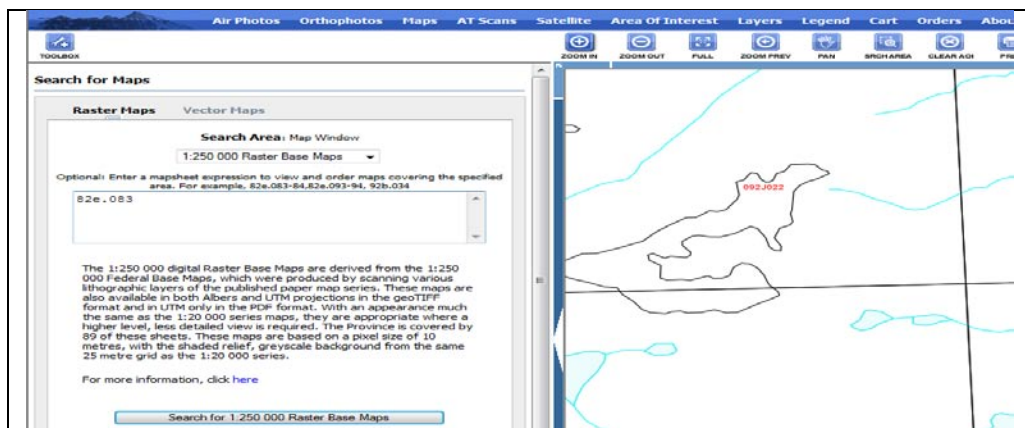
## List of Product Categories for Raster Maps

Click on the drop down menu to display the list of available products.



## Search Area Window

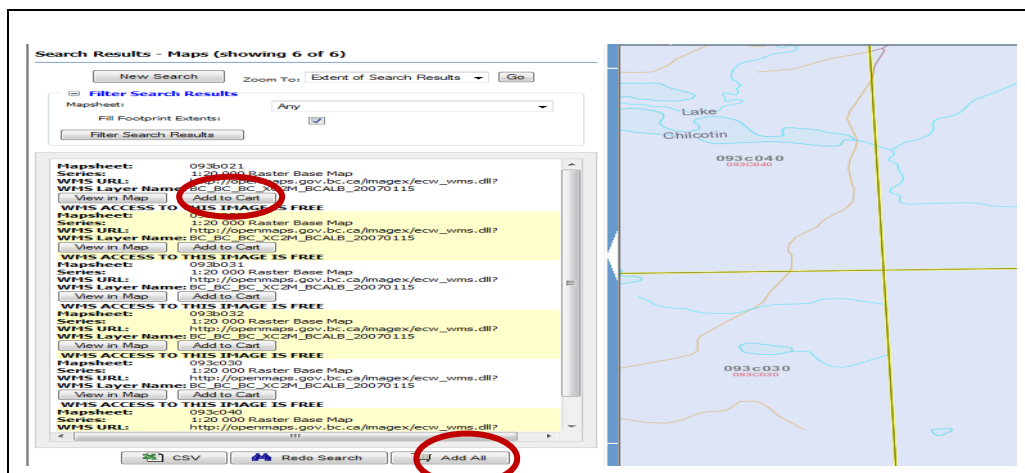
If you know the mapsheet number e.g. 82e.083 you can enter that in the Search Area window and then click the Search for.... button.



To purchase one or more Raster Base maps.

## Click the Add to Cart or Add All to Cart tab

This will prompt you to login with your BCeID or IDIR account.



Once you have completed your **Checkout** and hit the **Submit & Pay** tab you will be sent an e-mail with order details.

General information is posted at <http://www.geobc.gov.bc.ca/products>