

Position: **Reference Job #MR07**

Ministry: Transportation and Highways

Working Title: **Ferry Operator – Arrow Park Cable**

Branch: Marine Branch, Arrow Park Cable Ferry

Level: Range 9

Location: Selkirk

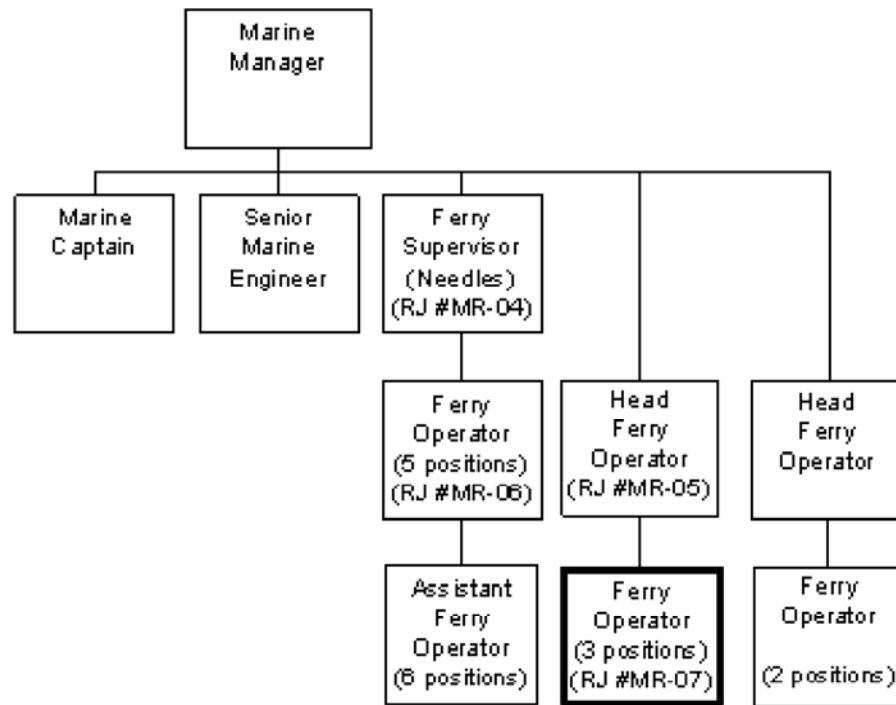
NOC Code: 7435

PRIMARY FUNCTION

To operate and assist in the maintenance of a single-person crew, 28 car, 75 passenger capacity cable ferry (including the ferry, ferry landings, machinery, equipment, building and safety gear).

JOB DUTIES AND TASKS

1. Operates and assists in the maintenance of the Arrow Park Cable Ferry
 - a. carries out assigned maintenance routines and repair tasks
 - b. operates the machinery and equipment in accordance with safety regulations and considering the safety and comfort of passengers
 - c. carries out running repairs as instructed by the Head Operator
 - d. carries out emergency repairs on own initiative if circumstances preclude the involvement of the supervisor
 - e. reports unsafe water or weather conditions to the supervisor
 - f. checks machinery and ancillary equipment for operating performance and/or appearance
 - g. reports defects and repairs needed to the Head Operator
 - h. assists in the preparation of refit lists and reports defects to the Head Operator
 - i. directs vehicles and passengers to load and unload
 - j. checks vehicles to ensure they comply with dangerous cargo regulations
 - k. carries out maintenance and cleaning routines to terminal building, restrooms, and vessel
2. Assists in ensuring that the safety, fire fighting equipment and life saving equipment is available, certified and in operative condition
 - a. checks the equipment and reports observed deficiencies or defects to the Head Operator
 - b. takes immediate action to alleviate safety threatening circumstances
 - c. reports unsafe working conditions to the supervisor immediately



FACTOR	REASON FOR CLASSIFICATION	DEGREE	POINTS
1	<p>JOB KNOWLEDGE</p> <p>Know a variety of operations and how they relate to the safe operation and maintenance of a 28 car and 75 passenger cable ferry.</p>	C	60
2	<p>MENTAL DEMANDS</p> <p>Judgement to recognize known differences and determine the priority of tasks to assist in the safe operation and maintenance of the Arrow Park Ferry.</p>	C	60
3	<p>INTERPERSONAL COMMUNICATIONS SKILL</p> <p>Discretion required to exchange information needing an explanation of traffic loading procedures with the public.</p>	C	30
4	<p>PHYSICAL COORDINATION AND DEXTERITY</p> <p>Significant coordination and dexterity required in emergency conditions to rescue passengers or respond to marine emergencies.</p>	D	22.5
5	<p>RESPONSIBILITY FOR WORK ASSIGNMENTS</p> <p>Guided by specific procedures, selects a course of action, using past practices and previous instructions to operate and assist in the maintenance of the Arrow Park Cable Ferry.</p>	C	50
6	<p>RESPONSIBILITY FOR FINANCIAL RESOURCES</p> <p>No financial responsibility.</p>	A	5

FACTOR	REASON FOR CLASSIFICATION	DEGREE	POINTS
7	RESPONSIBILITY FOR PHYSICAL ASSETS/INFORMATION Considerable responsibility to operate a 28 car cable ferry.	E	33
8	RESPONSIBILITY FOR HUMAN RESOURCES Limited responsibility for human resources to provide informal guidance to new employees on procedures.	A	5
9	RESPONSIBILITY FOR WELL BEING/SAFETY OF OTHERS Considerable care and attention to operate a cable ferry.	E	40
10	SENSORY EFFORT/MULTIPLE DEMANDS Focused sensory concentration to frequently visually and by smell and hearing check vehicles and deck equipment for unsafe conditions.	C	12
11	PHYSICAL EFFORT Relatively heavy physical effort to almost always stand and work.	D	18
12	SURROUNDINGS Exposure to all weather conditions frequently (shelter available).	C	6
13	HAZARDS Significant exposure to hazards from almost always working near moving traffic to load and unload ferry.	D	9

Total Points: 350.5

Level: Range 9