

Position: **Reference Job #MR06**

Ministry: Transportation and Highways

Working Title: **Ferry Operator – Needles Cable**

Branch: Marine Branch, Needles Cable Ferry

Level: Range 13

Location: Nelson

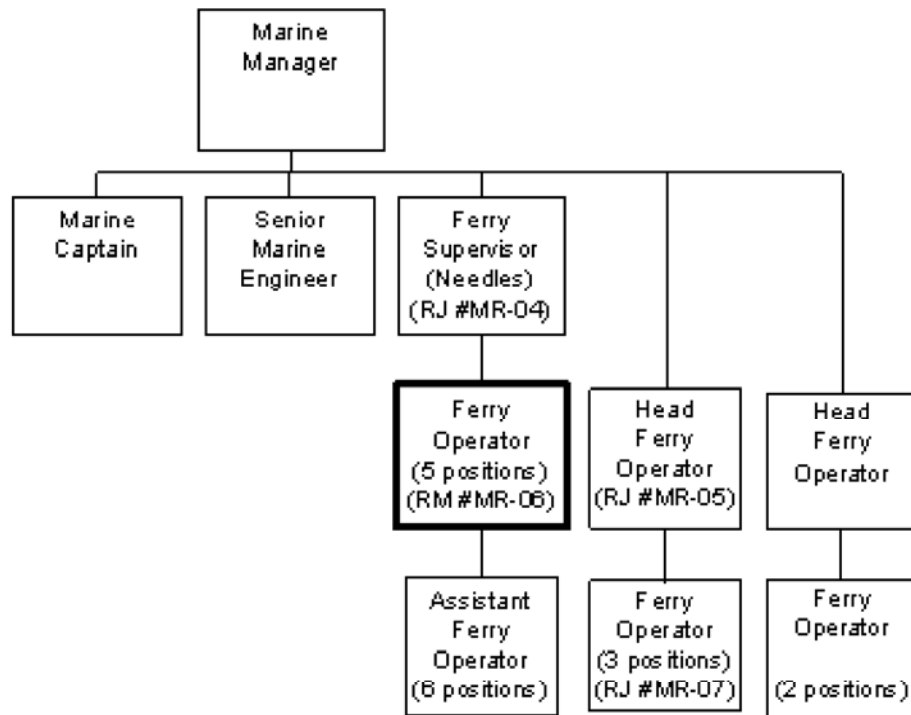
NOC Code: 7435

PRIMARY FUNCTION

To operate and maintain a two-person crew, 40 car capacity cable ferry (including the ferry, ferry landings, machinery, and buildings) and supervise the Assistant Ferry Operator.

JOB DUTIES AND TASKS

1. Operates and assists in the maintenance of Needles Cable Ferry
 - a. carries out or supervises the completion of planned maintenance routines on all operating machinery and ancillary equipment, as delegated by the supervisor
 - b. operates the machinery in accordance with safety regulations and considering the comfort and safety of passengers
 - c. carries out running repairs as directed by the supervisor
 - d. carries out emergency repairs on own initiative if circumstances dictate this action
 - e. reports unsafe water or weather conditions to the supervisor
 - f. checks machinery and ancillary equipment for operating performance and/or appearance and reports defects and repairs needed to the supervisor
 - g. assists in the preparation of refit lists and reports refit defects and other work to the supervisor
 - h. checks the terminal buildings and restrooms for defects and reports repairs needed to the supervisor
 - i. validates receipt of goods
2. Ensures that the safety, fire fighting and lifesaving equipment is available and certified fit for use both aboard the ferry and at the terminals
 - a. checks equipment at the commencement of each shift and reports deficiencies to the supervisor
 - b. takes immediate action to alleviate circumstances threatening safety, in the absence of the supervisor
3. Supervises the work of an Assistant Ferry Operator
 - a. completes employee performance appraisals and takes disciplinary action
 - b. instructs subordinate staff in maintenance and repair work and operation procedures
 - c. ensures a safe working environment



FACTOR	REASON FOR CLASSIFICATION	DEGREE	POINTS
1	<p>JOB KNOWLEDGE</p> <p>Understand and apply the accepted methods of cable ferry operations and how they relate to safe operation and maintenance of a 40 car, 150 passenger cable ferry, and supervision of an assistant ferry operator.</p>	E	145
2	<p>MENTAL DEMANDS</p> <p>Judgement to assess known information and choose an approach using accepted cable ferry operation and maintenance procedures and equipment to operate or supervise the operation of the Needles Cable Ferry during a shift.</p>	D	100
3	<p>INTERPERSONAL COMMUNICATIONS SKILL</p> <p>Persuasion required to use basic counselling skills to appraise and discipline an assistant ferry operator.</p>	D	45
4	<p>PHYSICAL COORDINATION AND DEXTERITY</p> <p>Significant coordination and dexterity required to dock a cable ferry.</p>	D	22.5
5	<p>RESPONSIBILITY FOR WORK ASSIGNMENTS</p> <p>Guided by specific procedures, past practices and previous instructions selects a course of action to operate and maintain the Needles Cable Ferry.</p>	C	50
6	<p>RESPONSIBILITY FOR FINANCIAL RESOURCES</p> <p>Some financial responsibility to validate receipt of goods.</p>	C	15

FACTOR	REASON FOR CLASSIFICATION	DEGREE	POINTS
7	RESPONSIBILITY FOR PHYSICAL ASSETS/INFORMATION Considerable responsibility to operate a 40 car cable ferry.	E	33
8	RESPONSIBILITY FOR HUMAN RESOURCES Responsibility to supervise an Assistant Ferry Operator, appraise employee performance and take disciplinary action (1 FTE).	DD	19
9	RESPONSIBILITY FOR WELL BEING/SAFETY OF OTHERS Considerable care and attention to operate a cable ferry.	E	40
10	SENSORY EFFORT/MULTIPLE DEMANDS Focused sensory concentration and attention to detail to visually and by hearing inspect operations frequently.	C	12
11	PHYSICAL EFFORT Moderate physical effort to frequently stand or walk.	C	12
12	SURROUNDINGS Exposure to all weather conditions frequently (shelter available).	C	6
13	HAZARDS Moderate exposure to hazards from working near moving vehicles frequently.	C	6

Total Points: 505.5

Level: Range 13