

Position: **Reference Job #MR05**

Ministry: Transportation and Highways

Working Title: **Head Ferry Operator**

Branch: Marine Branch, Arrow Park Cable Ferry

Level: Range 14

Location: Selkirk

NOC Code: 7435

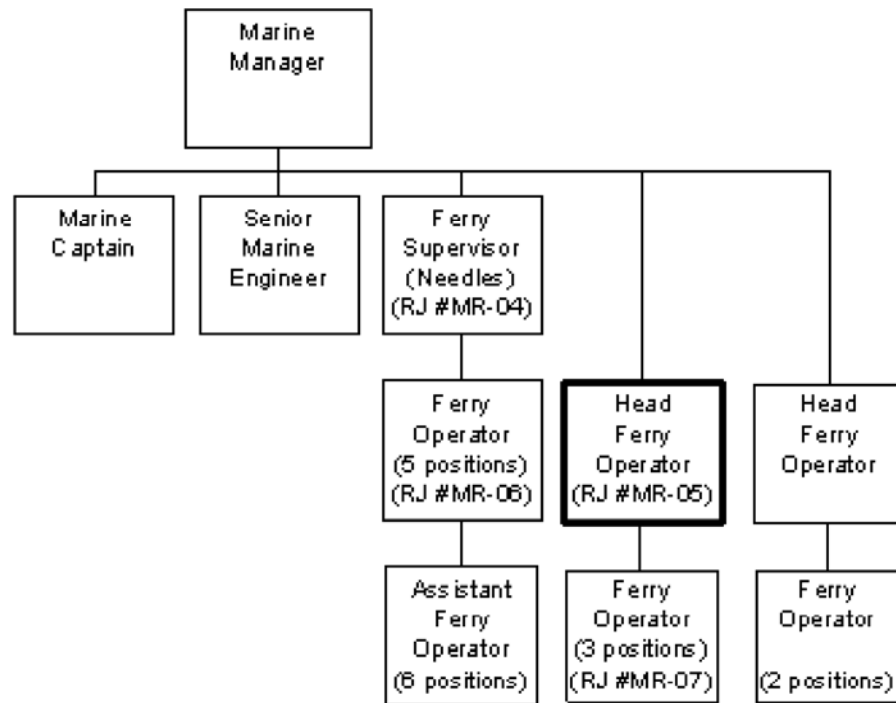
## PRIMARY FUNCTION

To be responsible as supervisor of several one-person crews, for the safe and efficient operation and maintenance of a 28 car, 75 passenger capacity (carrying approximately 55,000 vehicles per year) ferry system (including the ferry, ferry landings, machinery, buildings), and operate the ferry on a shift.

## JOB DUTIES AND TASKS

1. Operates the ferry on a shift
  - a. operates the machinery in a safe and effective manner in accordance with safety regulations and user advice manuals
2. Ensures that the cable ferry's machinery and ancillary equipment is operative and maintained in peak condition at all times
  - a. carries out or supervises the completion of the prescribed maintenance routines running for all machinery and ancillary equipment
  - b. carries out running repairs or ensures that all repairs to the main operating machinery and ancillary equipment are carried out by staff or contractors
  - c. verifies the completion of maintenance, overhauls, repairs, and rebuilding of machinery and ancillary equipment by staff and contractors in order that the Marine Manager can certify satisfactory contract performance
3. Ensures that all phases of ship board maintenance are carried out
  - a. checks onboard equipment, condition of paint work, bright work and cleaning
4. Ensures that the ferry's terminal equipment and buildings are maintained
  - a. checks the machinery and building for operational efficiency, quality of repair and appearance
  - b. checks the buildings for cleanliness
5. Ensures that safety and lifesaving equipment is available and has been certified fit for use both at the terminals and aboard the vessel
  - a. checks equipment and dates of last certified tests/inspection
  - b. ensures that the equipment meets all prescribed regulations
6. Prepares refit lists and oversees the refit of the vessel
  - a. notes the major and minor defects between refits
  - b. ensures that the refit list of work to be done is complete
  - c. oversees the refit at all phases and assists in ensuring the work is carried out promptly and at an acceptable level of quality

7. Supervises the work of three ferry operators
  - a. administers the BCGEU Master and Component Agreements
  - b. authorizes overtime when justified
  - c. prepares employee performance appraisals
  - d. initiates disciplinary action when appropriate
  - e. inducts new employees and provides orientation
  - f. initiates and arranges training programs
8. Performs other related duties
  - a. ensures that a safe work environment exists at all times and the ferry is operated in a safe manner
  - b. meets and deals with the public in a tactful and courteous manner on matters concerning the cable ferry operations



FACTOR	REASON FOR CLASSIFICATION	DEGREE	POINTS
1	<p><b>JOB KNOWLEDGE</b></p> <p>Understand and apply the accepted methods of cable ferry operations to be responsible for the operation and maintenance of a lower-volume barge-type passenger cable ferry, operating on a non-highway route.</p>	E	145
2	<p><b>MENTAL DEMANDS</b></p> <p>Judgement to assess known information and choose an approach using accepted cable ferry operating and maintenance procedures and equipment to supervise the operation and maintenance of the Arrow Park barge-type cable ferry, operating on a non-highway route.</p>	D	100
3	<p><b>INTERPERSONAL COMMUNICATIONS SKILL</b></p> <p>Persuasion required to use basic counselling skills required to appraise and discipline ferry operators.</p>	D	45
4	<p><b>PHYSICAL COORDINATION AND DEXTERITY</b></p> <p>Significant coordination and dexterity required to operate a cable ferry.</p>	D	22.5
5	<p><b>RESPONSIBILITY FOR WORK ASSIGNMENTS</b></p> <p>Guided by general procedures or instructions, selects alternative course of action to supervise the operation and maintenance of a lower-volume cable ferry operating on a non-highway route, as well as landings, machinery and buildings.</p>	D	75
6	<p><b>RESPONSIBILITY FOR FINANCIAL RESOURCES</b></p> <p>Moderate financial responsibility to authorize overtime.</p>	D	22.5

<b>FACTOR</b>	<b>REASON FOR CLASSIFICATION</b>	<b>DEGREE</b>	<b>POINTS</b>
7	<b>RESPONSIBILITY FOR PHYSICAL ASSETS/INFORMATION</b> Considerable responsibility to supervise the full maintenance and repair of ferry equipment.	E	33
8	<b>RESPONSIBILITY FOR HUMAN RESOURCES</b> Responsibility to supervise workers, appraise employee performance and take disciplinary action (3 FTEs).	DE	20
9	<b>RESPONSIBILITY FOR WELL BEING/SAFETY OF OTHERS</b> Considerable care and attention to be responsible for a cable ferry.	E	40
10	<b>SENSORY EFFORT/MULTIPLE DEMANDS</b> Focused sensory concentration and attention to detail to visually and by hearing inspect operations frequently.	C	12
11	<b>PHYSICAL EFFORT</b> Relatively heavy physical effort to occasionally move or carry heavy weights while carrying out repairs.	D	18
12	<b>SURROUNDINGS</b> Exposure to all weather conditions frequently (shelter available).	C	6
13	<b>HAZARDS</b> Significant exposure to hazards from working near moving equipment frequently.	C	6

Total Points: 545

Level: Range 14