

Position Number: **Benchmark Job #349**

Ministry: Environment, Lands and Parks

Branch: Fisheries

Location: Kootenays

Working Title: **Regional Fisheries Technician**

Level: Range 14 (Paid Range 15 per 13th Master.)

NOC Code: 2221

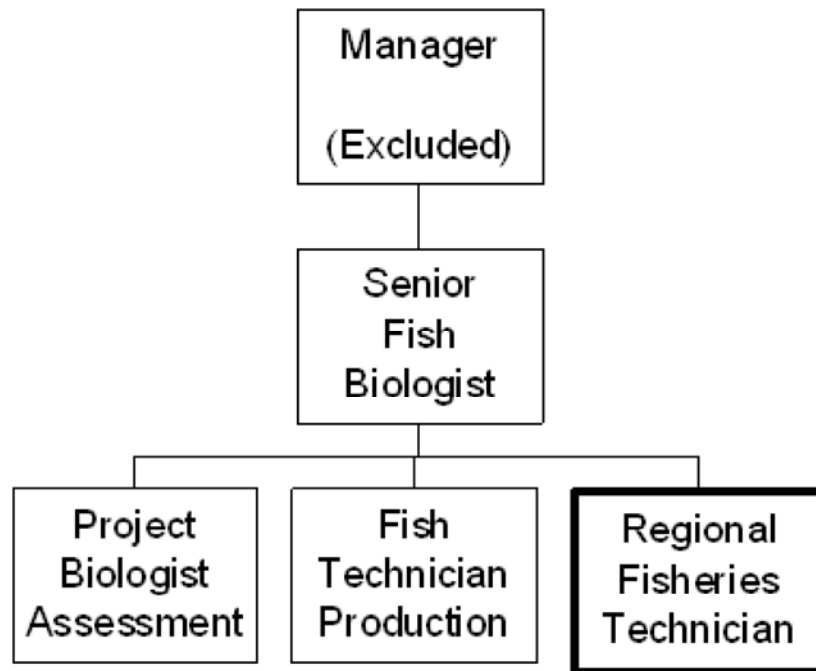
PRIMARY FUNCTION

To carry out fisheries management activities to meet identified needs in maintaining species diversity and viability.

JOB DUTIES AND TASKS

1. Carries out fisheries management activities
 - a. calculates estimates of resource abundance and habitat capability
 - b. collects biophysical inventory and population data such as lake and stream inventory, population census and water quality parameters
 - c. tabulates and collates data and performs preliminary assessment following established procedures
 - d. prepares reports and recommendations for management consideration
 - e. collects data on the sport fishing angler harvest, success, participation and preferences through questionnaires and interviews
 - f. collects evidence for litigation by enforcement staff
 - g. maintains current knowledge on fisheries management
 - h. conducts inspections and makes recommendations on private and commercial fish farms
2. Assists in regional fisheries enhancement and rehabilitative projects to meet regional objectives
 - a. identifies and recommends enhancement and rehabilitation opportunities through an assessment of biophysical and user data
 - b. plans project logistics, cost estimates, equipment needs, staffing and project timing
 - c. assesses and carries out enhancement work plans
 - d. incubates and rears fish to specified sizes and releases fish into the habitat
 - e. writes project status reports
 - f. supplies technical direction on projects to the general public and stakeholders
 - g. captures broodstock, using angling, electroshocking, trapping and netting
 - h. constructs, maintains and operates fish culture facilities such as enumeration fences, spawning channels, incubation facilities
 - i. performs general maintenance and clean-up duties within a fish hatchery
3. Performs a number of administrative functions
 - a. leads a work group, assigns duties, checks work and gives technical direction
 - b. identifies equipment needs and performs routine maintenance
 - c. calculates project budget and supply cost estimates

- d. recommends conditions for the issuance of permits
 - e. monitors contractor compliance with the terms and conditions and reports potential problems
4. Provides technical expertise on resource management matters
- a. supplies information to special interest groups
 - b. attends workshops/conferences to represent the Branch/Region
 - c. responds to public inquiries concerning Fisheries projects, activities, regulations, etc.



FACTOR	REASON FOR CLASSIFICATION	DEGREE	POINTS
1	<p>JOB KNOWLEDGE</p> <p>Have a practical understanding of fisheries management to vary methods in the collection of biophysical inventory and population data and conduct preliminary assessment relative to maintaining fish species diversity, to conduct and assess fish enhancement projects, and to deal with unusual site conditions.</p>	F	190
2	<p>MENTAL DEMANDS</p> <p>Judgement to apply structured study, analysis and interpretation of fish habitat capability using a combination of accepted methods and procedures to assess the viability of streams and lakes to support fish populations.</p>	E	150
3	<p>INTERPERSONAL COMMUNICATIONS SKILL</p> <p>Discretion required to exchange information with contractors needing an explanation of corrective action that is required on fish enhancement projects.</p>	C	30
4	<p>PHYSICAL COORDINATION AND DEXTERITY</p> <p>Moderate coordination and dexterity required to drive vehicles to field locations where data collection and enhancement activities are conducted.</p>	C	15
5	<p>RESPONSIBILITY FOR WORK ASSIGNMENTS</p> <p>Guided by general procedures or instructions, selects alternative courses of action to collect biophysical data, collect evidence for litigation, assess fish enhancement projects, and conduct preliminary assessment of data.</p>	D	75
6	<p>RESPONSIBILITY FOR FINANCIAL RESOURCES</p> <p>Moderate financial responsibility to certify satisfactory contract performance for the construction or maintenance of fish enhancement facilities where the contracts have clear specifications.</p>	D	22.5

FACTOR	REASON FOR CLASSIFICATION	DEGREE	POINTS
7	RESPONSIBILITY FOR PHYSICAL ASSETS/INFORMATION Moderate responsibility to drive light vehicles to field site locations.	C	15
8	RESPONSIBILITY FOR HUMAN RESOURCES Responsible to assign, monitor, and review the work of seasonal staff for fish enumeration projects (up to 1 FTE).	CC	13
9	RESPONSIBILITY FOR WELL BEING/SAFETY OF OTHERS Moderate care and attention to drive a vehicle as a designated driver with no requirement to carry passengers.	C	15
10	SENSORY EFFORT/MULTIPLE DEMANDS Close attention to detail is required to regularly collate data, write reports, and review contract documents.	B	6
11	PHYSICAL EFFORT Moderate physical effort to occasionally lift moderate weights when constructing or maintaining fish culture facilities.	C	12
12	SURROUNDINGS Exposure on a regular basis to field conditions with no shelter when enumerating fish and capturing brood stock.	C	6
13	HAZARDS Moderate exposure to hazards from regularly standing in streams with unstable bottoms and hiking over rocky terrain to access field locations.	C	6

Total Points: 555.5

Level: Range 14

Paid Range 15 per 13th Master.