

Position Number: **Benchmark Job #220**

Ministry: Health

Branch: Mental Health Services

Location: New Westminster

Working Title: **Psychiatric Social Worker**

Level: Range 24

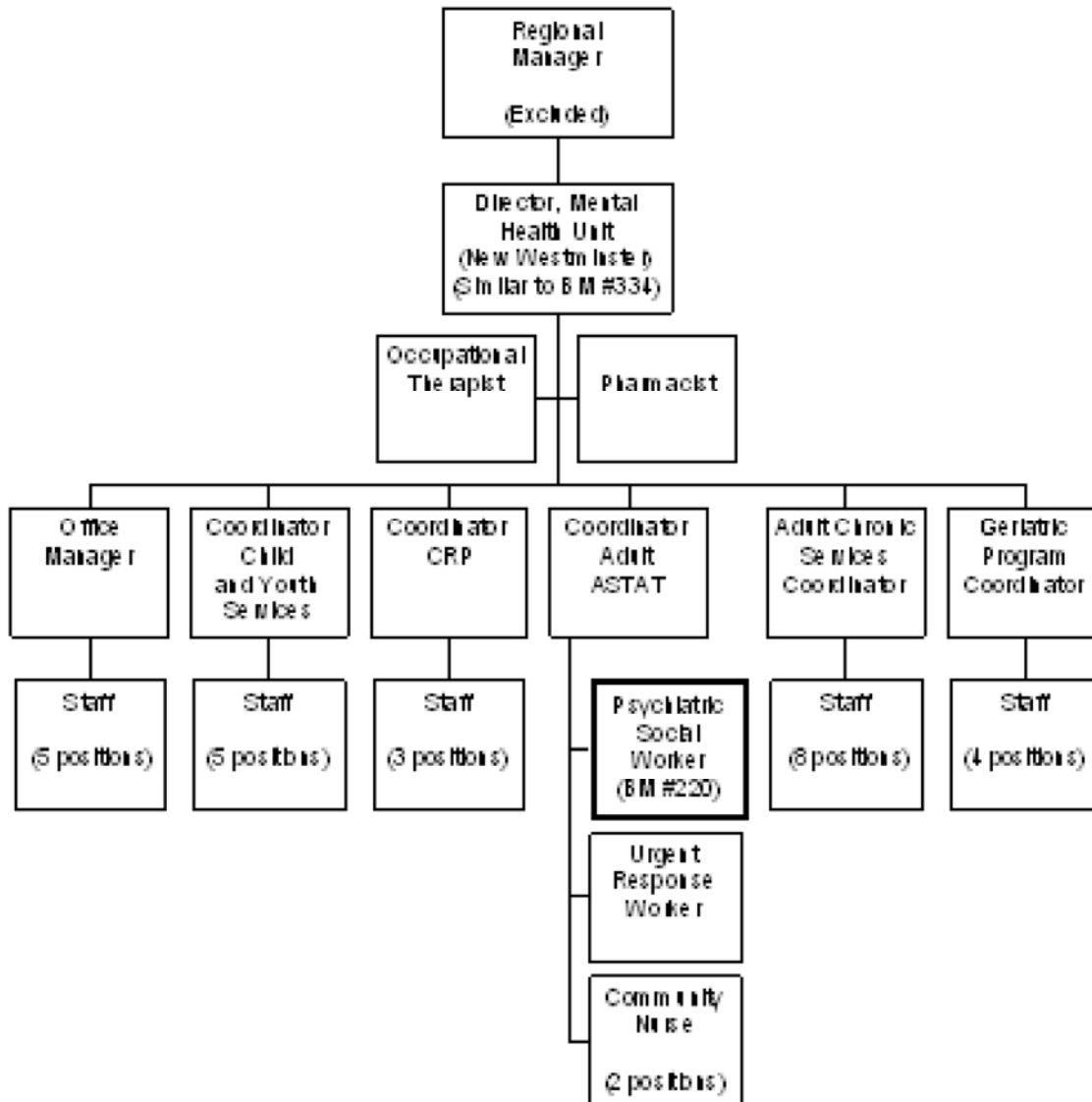
NOC Code: 4152

PRIMARY FUNCTION

To provide assessment, treatment and follow-up services for mentally ill adults and their families on an out-patient basis.

JOB DUTIES AND TASKS

1. Provides social work services for mentally ill adults and their families
 - a. determines appropriateness of referrals
 - b. gathers psycho-social information, identifies problems and assesses individual needs
 - c. develops individual treatment plans and goals, monitors progress of clients and adjusts plans as needed
 - d. exchanges information with other professionals and agencies with client approval
 - e. provides therapeutic treatment to clients using individual, group and family therapy modalities and other appropriate techniques and methods
 - f. provides advice and counselling to clients, couples, groups and families in dealing with mental illness and in setting goals
 - g. conducts home visits and provides outreach services to non-compliant clients
 - h. arranges for hospitalization, psychiatric assessment or other services
 - i. provides referrals to community services and rehabilitative programs
 - j. advocates on behalf of clients with other professionals and agencies
 - k. consults with other professionals and funded agencies regarding the provision of services for clients and coordinates services according to individual treatment plans
 - l. provides crisis intervention for clients at risk for suicide, requiring emergency hospitalization or psychiatric assessment
 - m. follows up treatment for clients on an out-patient basis
 - n. monitors medication and assesses on-going client behaviour
2. Performs other related duties
 - a. sets up and maintains case files, clinical records and notes
 - b. gathers information on available resources and services in the community
 - c. prepares reports and quarterly statistics
 - d. drives automobile to clinics, hospitals, client homes and agencies
 - e. provides orientation to new employees



FACTOR	REASON FOR CLASSIFICATION	DEGREE	POINTS
1	<p>JOB KNOWLEDGE</p> <p>Understand the theory of psychiatric social work to plan and review case work files for mentally ill adults on an out-patient basis, conduct client assessment including crisis intervention, develop treatment plans and goals, provide advice and counsel to clients and families, and provide individual, group and family therapeutic treatment.</p>	H	280
2	<p>MENTAL DEMANDS</p> <p>Judgement to modify counselling methods, techniques and approaches in working with mentally ill adults to develop individual treatment plans; conduct assessments, provide therapeutic treatment, counsel clients in dealing with mental illness, provide crisis intervention for clients and families in need, refer</p>	G	200

	clients to other agencies and arrange for hospitalization or psychiatric assessment if required.		
3	INTERPERSONAL COMMUNICATION SKILLS Influence and formal counselling skills required to provide therapy to initiate behavioural change of mentally ill adults and families.	E	60
4	PHYSICAL COORDINATION AND DEXTERITY Moderate coordination and dexterity required to drive vehicle to clinics, hospitals, clients' homes and other agencies.	C	15
5	RESPONSIBILITY FOR WORK ASSIGNMENTS Guided by general ministry policies and social work standards, plan and deliver assessment, treatment and follow-up services for mentally ill adults, counsel clients and families in dealing with mental illness; provide therapeutic treatment and intervene in crisis situations when client is at risk for suicide or requires emergency hospitalization.	F	160
6	RESPONSIBILITY FOR FINANCIAL RESOURCES No financial responsibility.	A	5

FACTOR	REASON FOR CLASSIFICATION	DEGREE	POINTS
7	<p>RESPONSIBILITY FOR PHYSICAL ASSETS/INFORMATION</p> <p>Moderate responsibility to set up and maintain a project information system of case files, clinical records and notes.</p>	C	15
8	<p>RESPONSIBILITY FOR HUMAN RESOURCES</p> <p>Limited responsibility for human resources to provide informal orientation to the workplace to new employees.</p>	A	5
9	<p>RESPONSIBILITY FOR WELL BEING/SAFETY OF OTHERS</p> <p>High level of care and attention to provide critical care to intervene with mentally ill adult out-patients during crisis situations such as when client is at risk for suicide or requires emergency hospitalization.</p>	F	50
10	<p>SENSORY EFFORT/MULTIPLE DEMANDS</p> <p>Focused sensory concentration to frequently observe and listen to mentally ill clients during counselling sessions.</p>	C	12
11	<p>PHYSICAL EFFORT</p> <p>Moderate physical effort to frequently focus visual attention to computer screen or printed material while reviewing or preparing client documentation.</p>	C	12
12	<p>SURROUNDINGS</p> <p>Exposure to frequent unpleasant dealings with upset and abusive mentally ill clients.</p>	C	6
13	<p>HAZARDS</p> <p>Significant exposure to hazards from frequently working around mentally ill clients who may react violently.</p>	D	9

Total Points: 829

Level: Range 24