

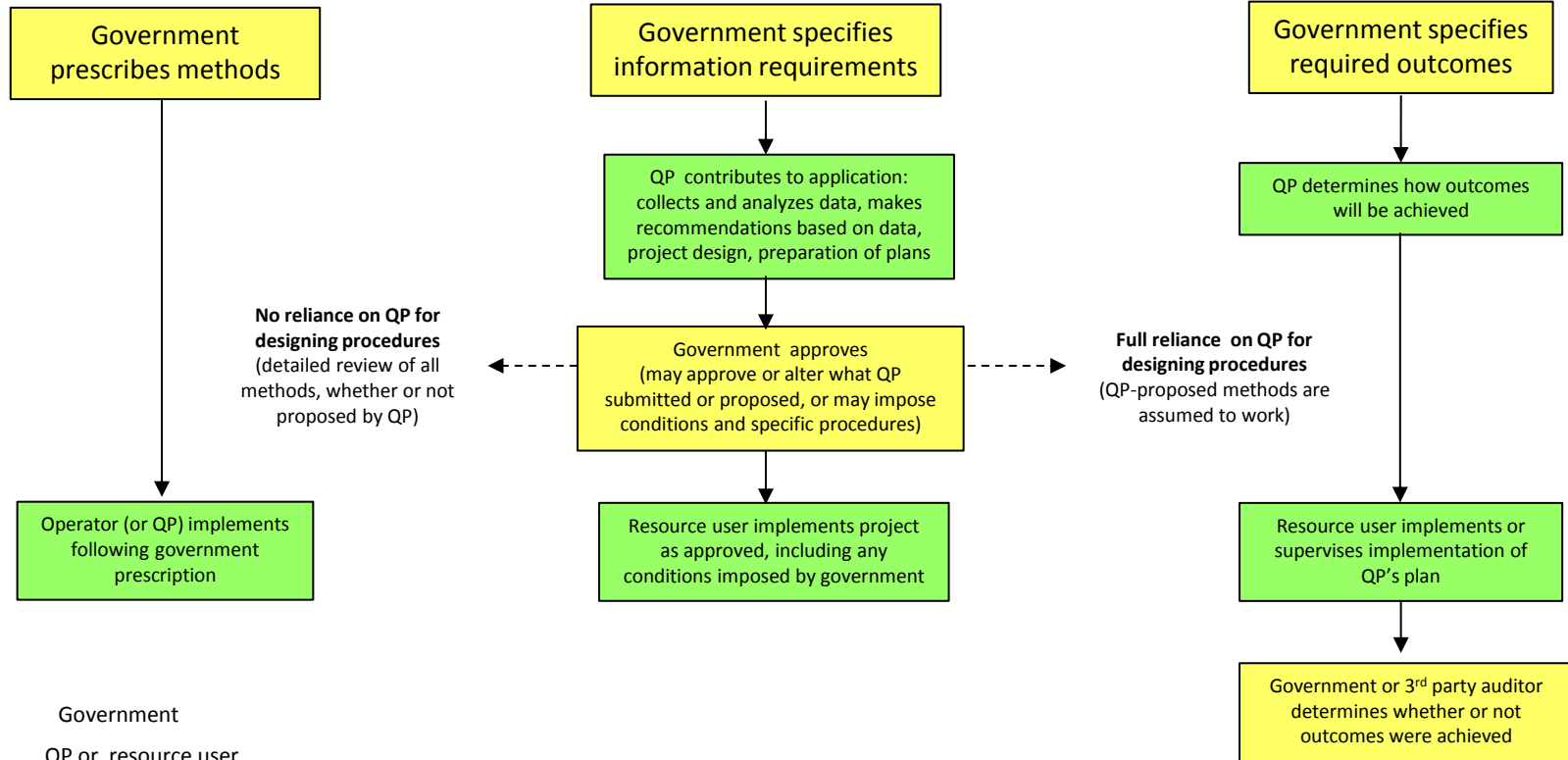
## Prescriptive (government specifies “how”)

Reliance on QP for expertise  
in executing specified task

## Outcome-based (government specifies “what”)

Reliance on QP for expertise in designing procedures, often  
involving judgement in weighing multiple criteria

**Needs:**  
Clearly defined and measurable outcomes  
Independence and accountability of QPs



Different models of reliance on QPs, and approaches to providing guidance.