

With you today



Jason Stevenson

Director, Cyber Security

T: 250 480 3531

E: jasonstevenson@kpmg.ca



Guy Rosario

Manager, Cyber Security

T: 250 480 3608

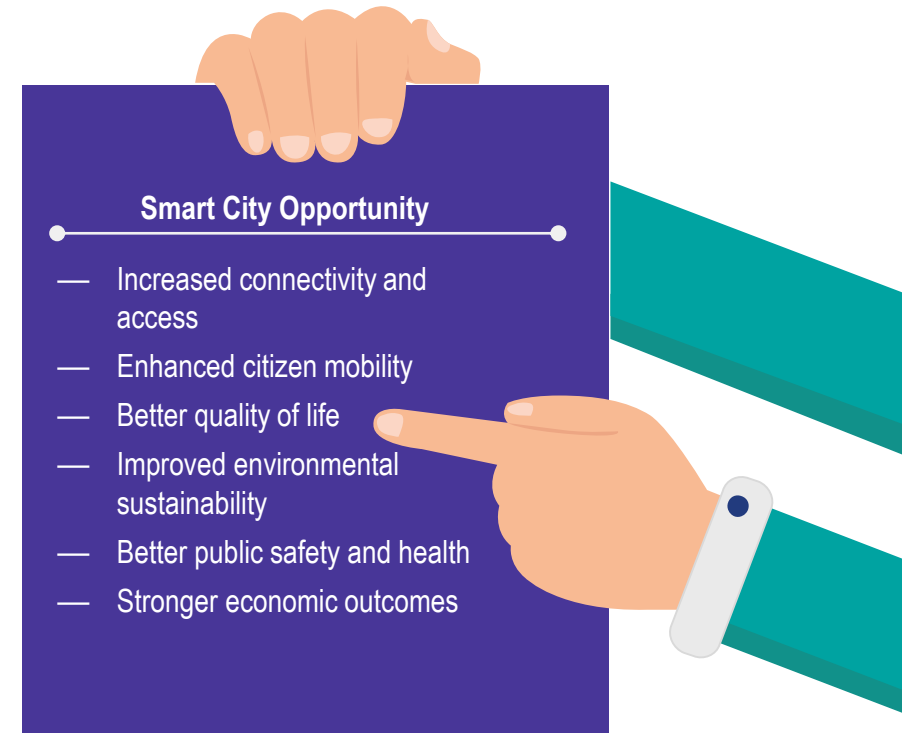
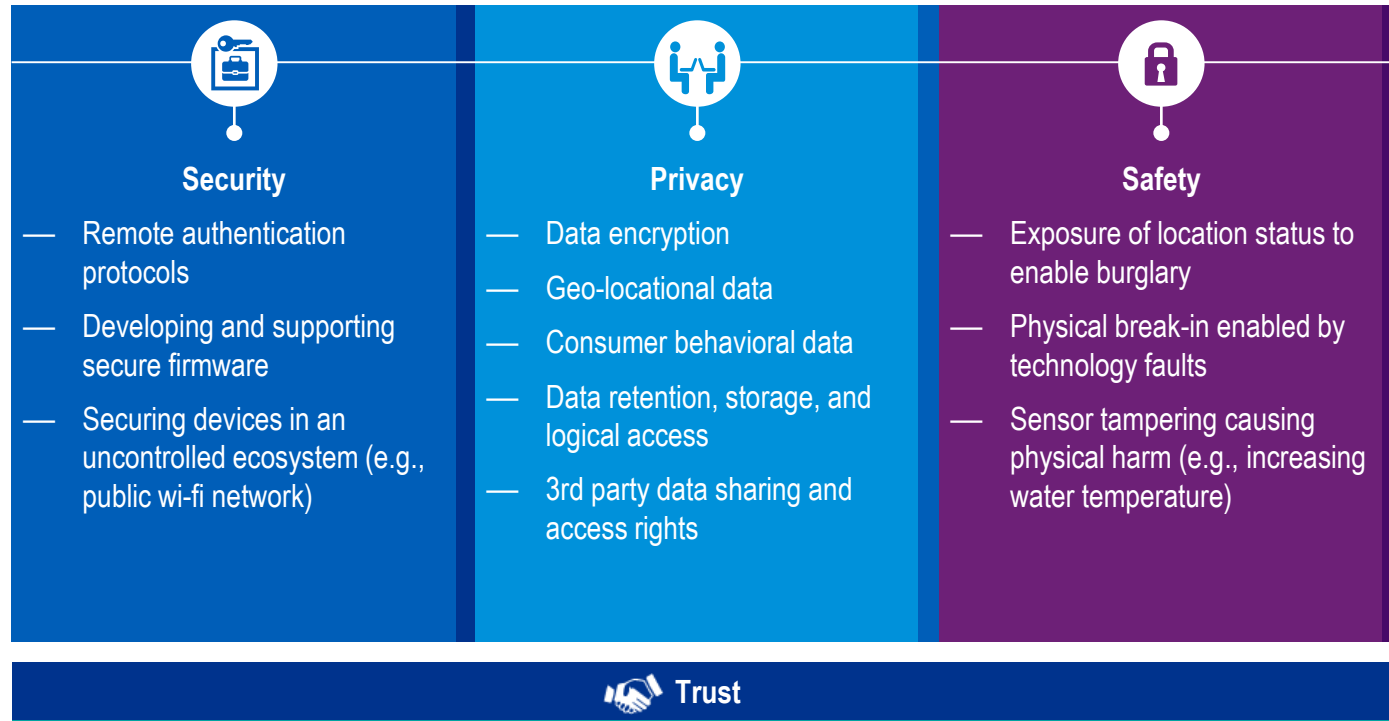
E: grosario@kpmg.ca

Contents

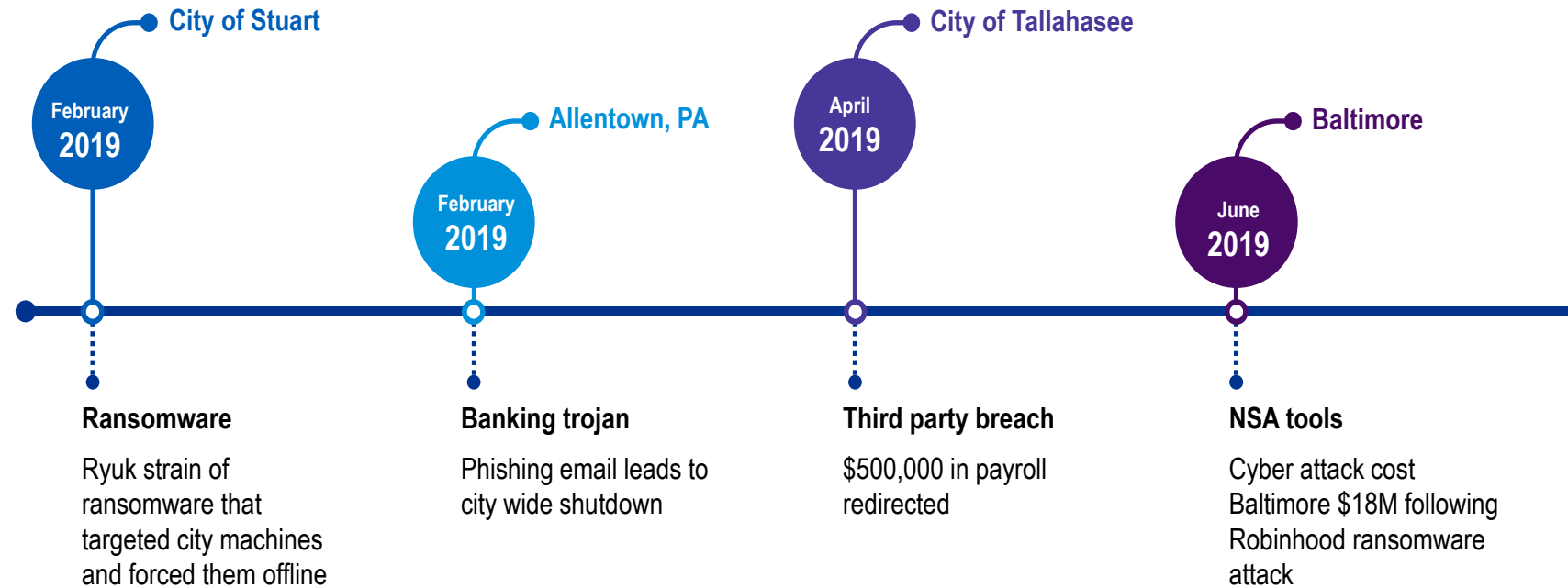


The Challenge

- Significant trends are pressuring and creating the opportunity for, many cities to transform, creating a **moving target for developers, security, and risk professionals**
- The **growing connected ecosystem** introduces new challenges for cities to manage
- IoT has an impact to various risk domains, notably **security, privacy, and safety**, collectively building consumer **trust**



Recent attacks



Key factors




 Inadequate asset management

 Increased attack surface


 Inadequate security governance

 Infrequent security assessment

 Lack of security requirements planning

 No identification of crown jewels

 No response planning, coordination or testing

 Weak monitoring controls

 Shadow IT

 Legacy systems

 Inadequate physical security

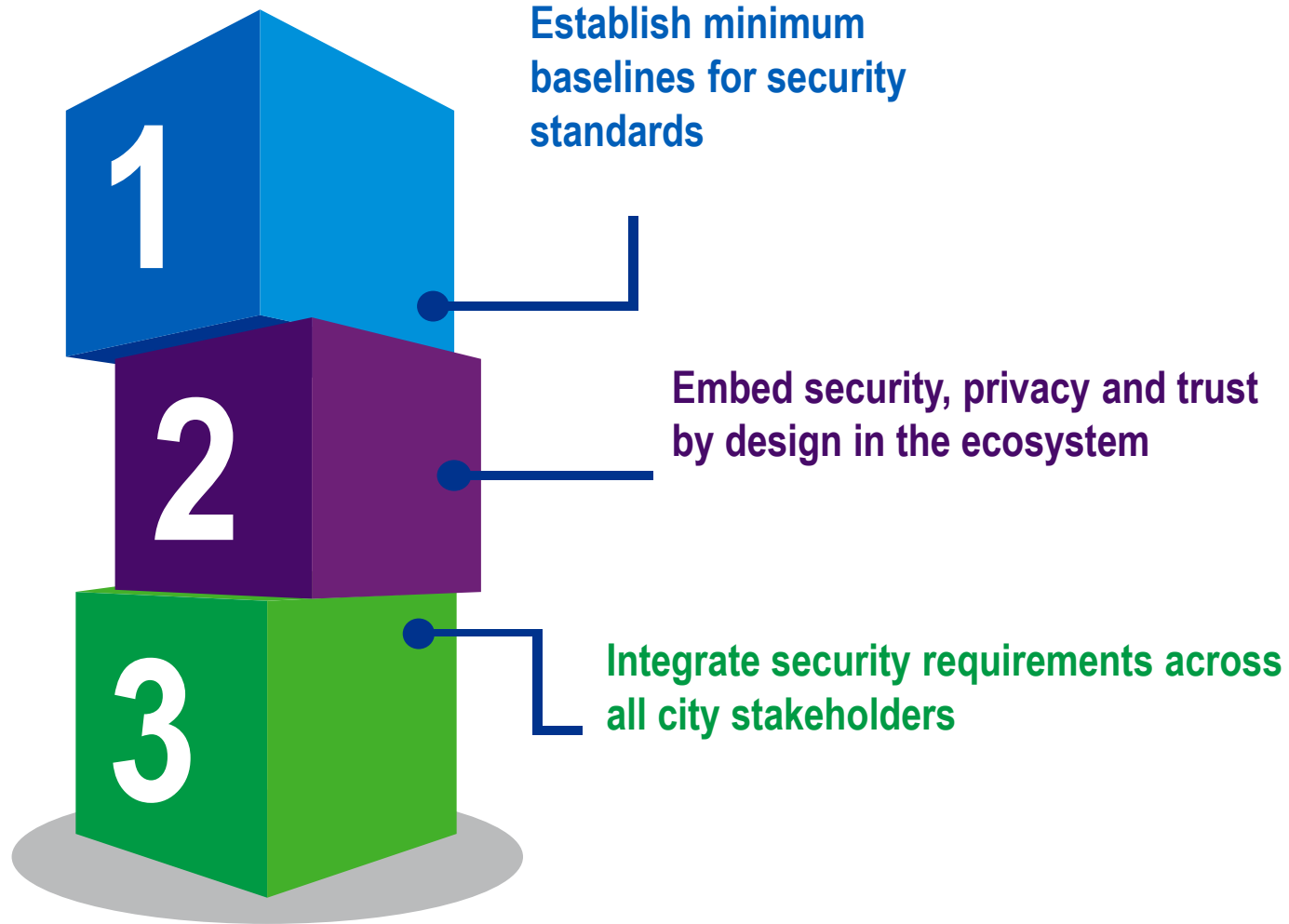
 Complexity in patch deployment

 Lack of encryption

 No third party/vendor risk assessment

 No collaboration with stakeholders

Building trust



Takeaways

01

Baseline Standards

- Secure interoperability
- Secure connection over the web
- Authentication, authorization, cryptography, auditing & alerting, patching, updating, configurations & more



02

Security, Privacy, Trust by Design

- Secure deployment
- Privacy measures, data protections, rights allocations
- Industry and regulatory needs, policy, compliance, communications



03

Stakeholder Integration

- Demonstration of capabilities
- Accreditation, audit, assurance
- Collaboration, innovation



Guiding Principles

Inherently secure technology establishes a foundation for a safe, reliable, and confidential consumer experience.

Consumer data is at the heart of public trust and perception and must be properly managed throughout the lifecycle.

A strong principles-based design embedded into product development is cost-effective and operationally preferred.

Data integrity, security, and privacy are key in successful product adoption and deployment.

An effective governance framework helps mitigate financial, operational, compliance, cybersecurity, and reputational risks.



Thank you



Contacts



Jason Stevenson
Director, Cyber Security
T: 250 480 3531
E: jasonstevenson@kpmg.ca



Guy Rosario
Manager, Cyber Security
T: 250 480 3608
E: grosario@kpmg.ca

