

This report summarizes all accidental, traffic-related pedestrian deaths that occurred between January 1, 2010 and October 31, 2016.

Inclusion Criteria: For BC Coroner's Service (BCCS) statistics, a traffic-related motor-vehicle incident is one occurring on a public "highway", as defined in the Motor Vehicle Act. This definition encompasses any roadway intended for or used by the public for the passage of vehicles, and any private place to which the public has access or is invited (e.g., for parking or vehicle servicing). Private driveways and forest service roads are excluded, except where the forest service road is open to public use. Incidents involving off-road vehicles, industrial vehicles, and farm vehicles are included when occurring on public highways, but excluded when occurring off-road or on a worksite.

Caveats: As the BCCS operates in a live database environment, the data are considered preliminary and subject to change. These data were compiled by date of death, which may differ from the date of injury. In some cases, the death may occur months or years subsequent to injury. These statistics may vary from those reported by other agencies, due to differences in data definitions or reporting standards.

Summary:

- In October 2016, there were 10 pedestrian deaths. The average number of October deaths from 2010 to 2015 was 4.7, with a high of 8 in October 2014.
- The province's crude pedestrian death rate per 100,000 population remained relatively stable from 2010 to 2015. Crude rates within health authorities varied from 1.0 to 1.4 per 100,000 pop. These differences are not necessarily statistically significant.
- Deaths occurred more frequently in the fall and winter months. The month with the highest average number of deaths was January (7.4), followed by November (7.2) and December (6.3).
- Vancouver accounted for more deaths than any other township (16% of all deaths), followed by Surrey (13%).
- Fifty-seven percent of pedestrians were male. One-third (33%) were 70 years of age or older, and 61% were aged 50 or older.

Pedestrian Deaths by Month of Death, 2010-2016 (YTD)							
Month	2010	2011	2012	2013	2014	2015	2016
January	13	7	3	5	7	9	8
February	5	5	6	8	2	7	4
March	7	5	8	5	3	2	6
April	3	2	8	-	1	6	7
May	1	3	1	1	2	3	-
June	4	2	5	3	2	3	2
July	4	7	2	3	4	4	2
August	5	3	4	3	1	7	2
September	6	5	8	7	6	4	6
October	2	5	4	4	8	5	10
Subtotal	50	44	49	39	36	50	47
November	4	7	9	8	7	8	
December	6	6	5	5	11	5	
Total	60	57	63	52	54	63	47

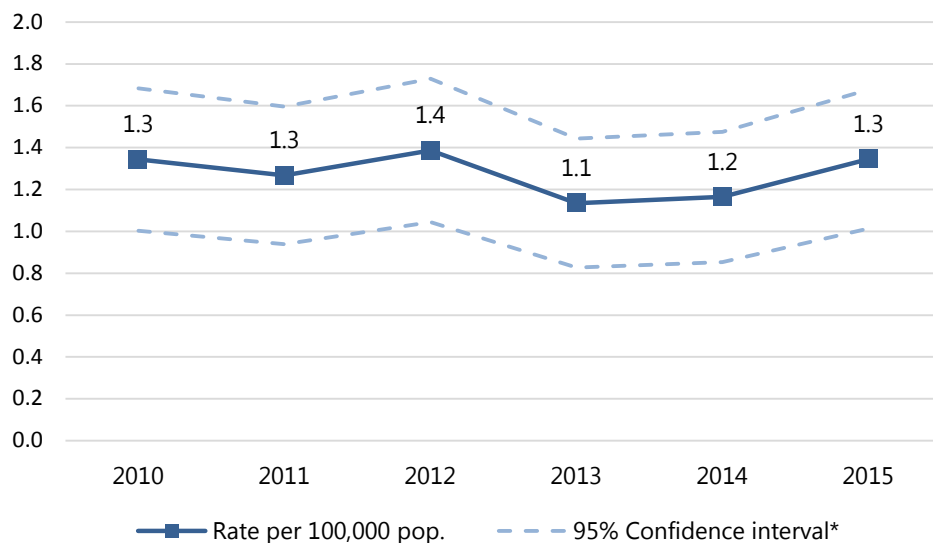


Fig. 1. Crude Death Rate per 100,000 Population, 2010-2015

**For each year, there is a 95% chance that the true rate falls within the upper and lower limits of the confidence interval. Example: The death rate for 2012 is computed to be 1.4 per 100,000 population. There is a 95% chance that the true rate is between 1.0 and 1.7 per 100,000 population.*

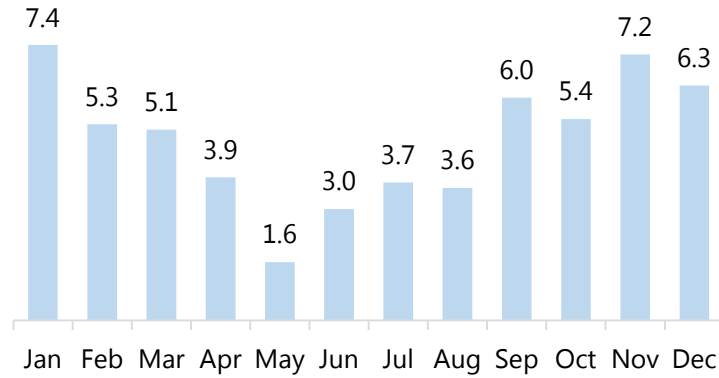


Fig. 2. Average Pedestrian Deaths Per Month, 2010-2016 (YTD)

Pedestrian Deaths by Health Authority of Injury, 2010-2016 (YTD)							
Health Authority	2010	2011	2012	2013	2014	2015	2016
Vancouver Coastal	13	16	15	11	10	19	17
Fraser	26	20	17	24	24	23	13
Vancouver Island	10	6	13	9	6	2	10
Northern	4	4	4	-	7	5	4
Interior	7	11	14	8	7	14	3
Total	60	57	63	52	54	63	47

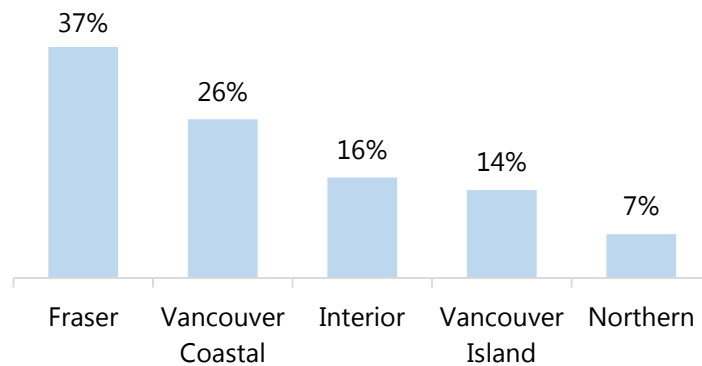


Fig. 3. Pedestrian Deaths by Health Authority of Injury, 2010-2016 (YTD)

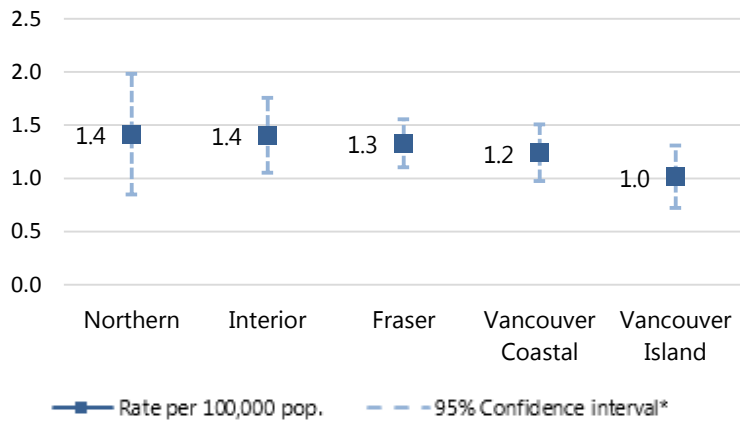


Fig. 4. Crude Death Rate per 100,000 Population by Health Authority, 2010-2015

**For each health authority, there is a 95% chance that the true rate falls within the upper and lower limits of the confidence interval. Example: The death rate for Vancouver Coastal is computed to be 1.2 per 100,000 population. There is a 95% chance that the true rate is between 1.0 and 1.5 per 100,000 population.*

Top Seven Townships of Injury in Pedestrian Deaths, 2010-2016 (YTD)			
Rank	Township	# of Deaths	% of Total Deaths
#1	Vancouver	64	16%
#2	Surrey	50	13%
#3	Abbotsford	22	6%
#4	Richmond	21	5%
#5	Burnaby	14	4%
#6	Kelowna	14	4%
#7	Nanaimo	11	3%
-	Other	200	51%
-	Total	396	100%

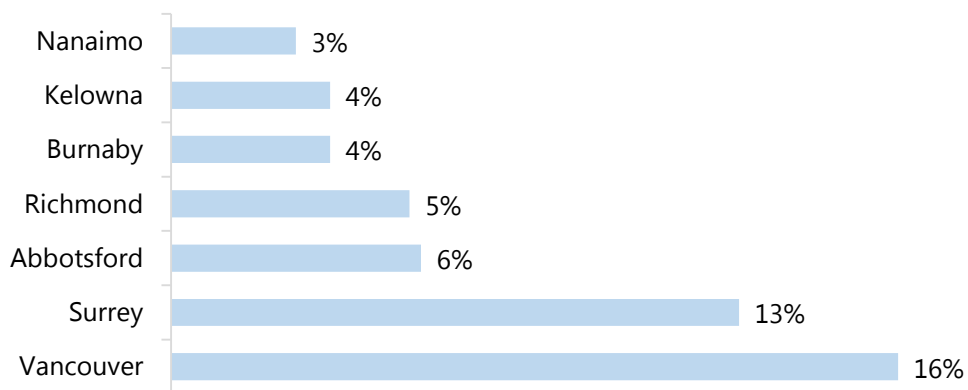


Fig. 5. Top Seven Townships of Injury in Pedestrian Deaths, 2010-2016 (YTD)

Other townships (not shown) accounted for 51% of pedestrian deaths.

Pedestrian Deaths by Sex, 2010-2016 (YTD)							
Sex	2010	2011	2012	2013	2014	2015	2016
Female	29	20	29	24	24	24	22
Male	31	37	34	28	30	39	25
Total	60	57	63	52	54	63	47

Pedestrian Deaths by Age Group, 2010-2016 (YTD)							
Age Group	2010	2011	2012	2013	2014	2015	2016
0-9	3	-	-	1	1	2	-
10-19	6	4	7	3	6	4	4
20-29	12	9	5	6	4	5	6
30-39	4	9	3	6	4	2	6
40-49	7	1	7	4	3	10	2
50-59	3	11	7	11	11	10	8
60-69	5	9	7	6	4	8	8
70-79	14	7	17	3	12	9	3
80+	6	7	10	12	9	13	10
Total	60	57	63	52	54	63	47

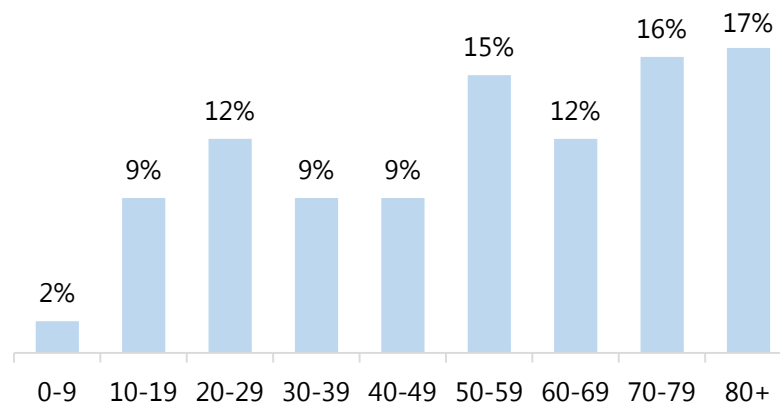


Fig. 6. Pedestrian Deaths by Age Group, 2010-2016 (YTD)