

This report summarizes all accidental deaths of motorcyclists in traffic-related motor vehicle incidents (MVIs) between January 1, 2010 and December 31, 2019.

Inclusion Criteria: In this report, the term “motorcyclist” is defined as an individual known to have been riding a motorcycle, moped, scooter, or street-legal, licensed dirt bike on a public highway when the MVI occurred.

For BC Coroners Service (BCCS) statistics, a traffic-related MVI is one occurring on a public “highway”, as defined in the *Motor Vehicle Act*. This definition encompasses any roadway intended for or used by the public for the passage of vehicles, and any private place to which the public has access or is invited (e.g., for parking or vehicle servicing). Private driveways and forest service roads are excluded, except where the forest service road is open to public use. Incidents involving off-road vehicles, industrial vehicles, and farm vehicles are included when occurring on public highways, but excluded when occurring off-road or on a worksite.

Caveats: As the BCCS operates in a live database environment, the data are considered preliminary and subject to change. These data were compiled by date of death, which may differ from the date of injury. In some cases, the death may occur months or years subsequent to injury. These statistics may vary from those reported by other agencies because of differences in data definitions or reporting standards.

General Summary:

- In 2019, there were 41 motorcyclist deaths. This is a 23% decrease over the number of motorcyclist deaths in 2018 (53).
- The majority of motorcyclists were male (91%) and were known to reside in BC (82%).
- Individuals aged 40 to 59 accounted for 46% of the deaths.
- The Interior and Fraser Health Authority continue to have the highest percentages of motorcyclist deaths (35% and 28%, respectively).
- Fifty-six percent (56%) of fatal injuries occurred in the summer months, accounting to over half of all fatalities for the ten-year period.
- Injuries occurred more frequently on Saturdays (22%), followed by Tuesday (18%) and Sunday (16%).
- The annual number of motorcyclist deaths per 10,000 motorcycle ranged from 1.3 in 2014 to a high of 1.8 in 2018. Data for 2019 is not yet available.

Table 1. Motorcyclist Deaths by Month, 2010-2019^[1]										
Month	2010	2011	2012	2013	2014	2015	2016	2017	2018	2019
January	0	0	1	1	1	1	0	0	0	1
February	2	0	0	1	0	0	1	1	0	0
March	2	3	1	2	0	2	0	0	0	1
April	2	1	1	1	4	2	3	1	2	3
May	5	0	1	5	7	4	3	1	4	6
June	7	7	0	0	4	6	2	5	7	7
July	4	7	8	3	7	9	12	6	19	5
August	5	7	6	9	7	6	7	11	10	8
September	6	8	3	5	5	2	5	5	7	4
October	5	2	2	3	0	4	0	3	4	5
November	0	0	3	2	2	0	0	0	0	1
December	0	0	0	0	0	0	1	1	0	0
Total	38	35	26	32	37	36	34	34	53	41

Fig. 1. Motorcyclist Deaths by Season of Injury, 2010-2019^[2]
n=365

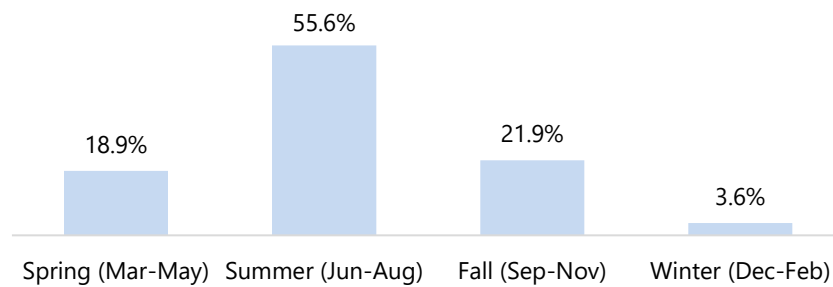


Fig. 2. Motorcyclist Deaths by Day of Injury, 2010-2019^[2]
n=365

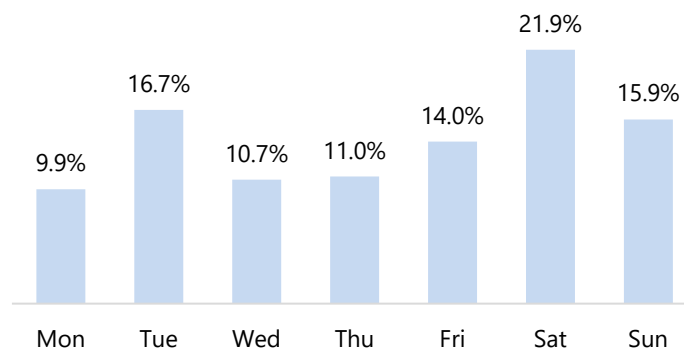


Table 2. Motorcyclist Deaths by Age Group, 2010-2019

Age	2010	2011	2012	2013	2014	2015	2016	2017	2018	2019
<19	1	0	0	0	1	0	1	0	0	0
19-29	4	7	6	9	1	5	5	1	16	3
30-39	4	4	5	6	5	7	6	9	9	5
40-49	10	10	7	2	5	9	9	4	4	12
50-59	14	11	4	6	14	7	6	11	9	13
60-69	3	2	3	4	10	5	6	5	9	5
70+	2	1	1	5	1	3	1	4	6	3
Total	38	35	26	32	37	36	34	34	53	41

Fig. 3. Motorcyclist Deaths by Age Group as % of Total, 2010-2019

n=366

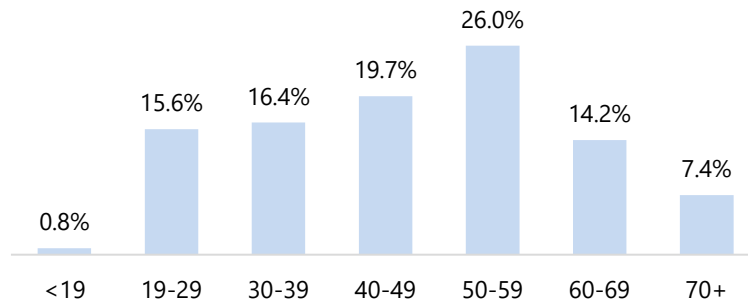


Table 3. Motorcyclist Deaths by Sex, 2010-2019

Sex	2010	2011	2012	2013	2014	2015	2016	2017	2018	2019
Female	5	2	1	3	2	4	3	5	4	3
Male	33	33	25	29	35	32	31	29	49	38
Total	38	35	26	32	37	36	34	34	53	41

Fig. 4. Motorcyclist Deaths by Sex as % of Total, 2010-2019

n=366

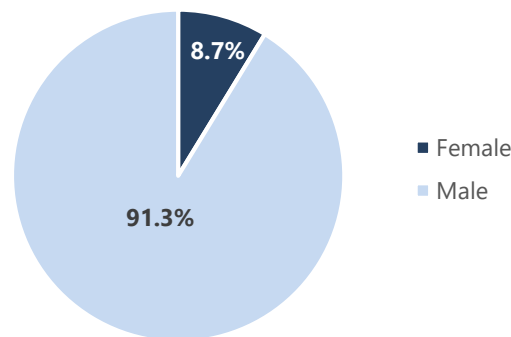


Table 4. Motorcyclist Deaths by Health Authority of Injury, 2010-2019^[3,4]										
HA	2010	2011	2012	2013	2014	2015	2016	2017	2018	2019
Interior	14	11	7	4	18	15	14	13	15	18
Fraser	8	10	8	8	9	10	10	9	19	11
Van. Coastal	2	3	5	6	2	3	2	4	3	5
Island	12	5	2	7	6	5	6	4	13	7
Northern	2	6	4	7	2	3	2	4	3	0
Total	38	35	26	32	37	36	34	34	53	41

Fig. 5. Motorcyclist Deaths by Health Authority of Injury, 2010-2019^[3,4]
n=366

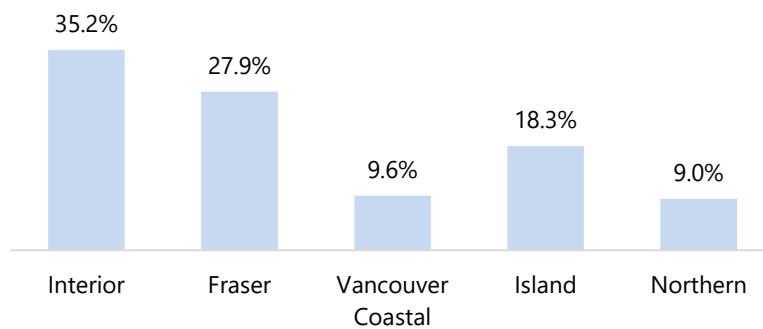


Table 5. Motorcyclist Deaths by Decedent Residence, 2010-2019										
Place of Residence	2010	2011	2012	2013	2014	2015	2016	2017	2018	2019
British Columbia	34	29	17	29	29	32	26	26	44	33
Other province	3	6	3	3	6	4	8	4	5	6
USA	1	0	1	0	1	0	0	3	2	0
Data not available	0	0	5	0	1	0	0	1	2	2
Total	38	35	26	32	37	36	34	34	53	41

Fig. 6. Motorcyclist Deaths by Place of Residence, 2010-2019
n=366

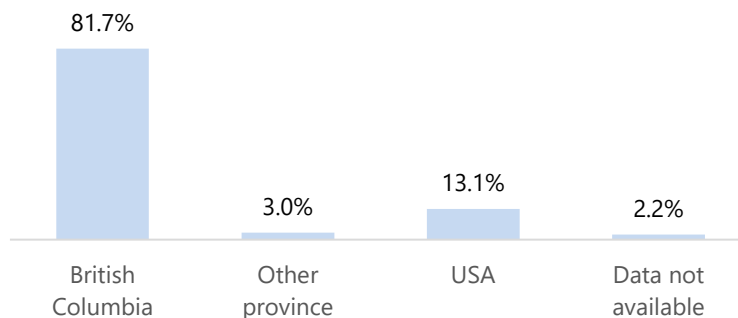
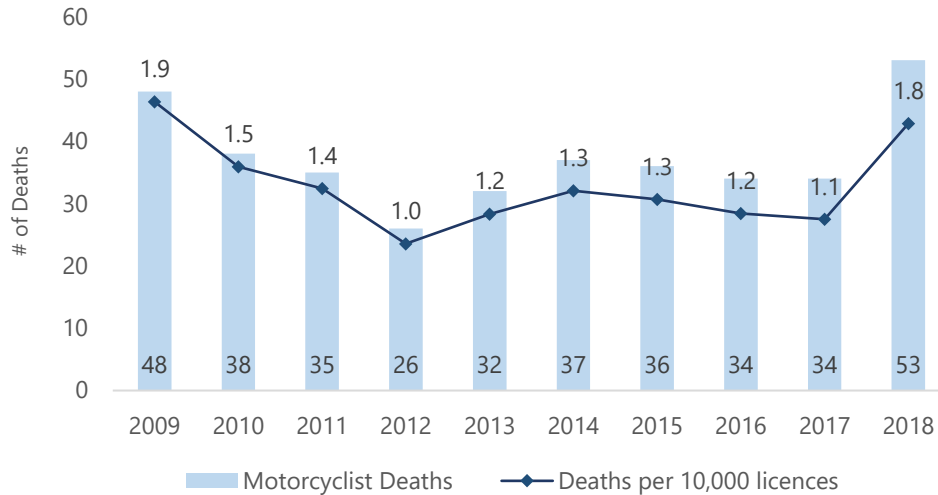


Fig. 7. Motorcyclist Deaths per 10,000 Motorcycle Licences, 2009-2018^[5]



Notes

1. These data were compiled by date of death, which may differ from the date of injury. In some cases, the death may occur months or years subsequent to injury.
2. One case with an unknown date of injury was excluded.
3. Health Region breakdowns can be found at: <https://www2.gov.bc.ca/gov/content/data/geographic-data-services/landuse/administrative-boundaries/health-boundaries>
4. Health authority is derived from injury township. Death township is used in cases of unknown or out-of-province injury township.
5. Motorcycle licence counts were provided by ICBC. Counts include active Class 6 and Class 8 motorcycle licences on December 31st of each year. Data for 2019 is not yet available. Data from 2014 to 2018 can be found at: <https://www.icbc.com/about-icbc/newsroom/Documents/active-BC-driver-licences.pdf>