

This report summarizes deaths between 2007 and 2015 that were reported to the Coroners Service and where the deceased met the BC Coroners Service definition of homeless. Deaths that must be reported to the coroner include all non-natural deaths, and all sudden and unexpected deaths where the person was not under the care of a physician. The report does not include the deaths of homeless individuals that did not meet the legal criteria of the Coroners Act for reporting.

Data Criteria

The data used for this report was retrieved from the BC Coroners Service database by year of death. Cases were included if 'no fixed address' was given as the home address, the injury premise was a 'homeless shelter' or if the circumstances of death suggested homelessness. Each case was reviewed and only those that could be confirmed, from the information available, as meeting the definition of homelessness described below were included in this report.

The BCCS operates in a live database environment. The data are considered preliminary until all investigations have been completed. Data are subject to change, and are not directly comparable to published counts from previous years.

Definitions & Limitations

"Street homeless": persons living outdoors, in a make-shift shelter, a parked vehicle, or any other structure not intended for habitation. "Sheltered homeless": persons staying at an emergency shelter (overnight) or temporarily sheltered (less than 30 days) by friends or family, in a short-term shelter, safe house for youth, or transition house for women and children fleeing violence. Persons residing in short-term shelters, safe houses, or transition houses for an unknown length of time were included.

There are many definitions of homelessness. Some individuals who do not meet the above definitions of homelessness may be considered homeless under other definitions. Examples of individuals who were **not** considered homeless for the purposes of this report include:

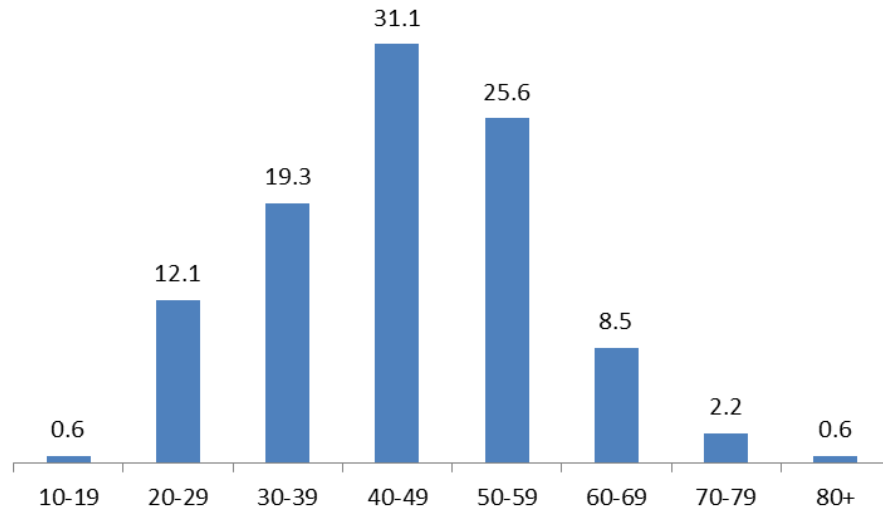
- People who do not have a permanent residence, but are temporarily residing and paying rent in a motel, a hotel, or another form of rental accommodation
- People in correctional institutions, hospitals, or residential drug or alcohol treatment facilities
- People who have a permanent residence, but are considered at high risk of homelessness because of unemployment, domestic violence, or other factors.
- It is not always possible to determine a person's housing status. As such data may be under-reported.

Statistics

Type of Homelessness, by Year of Death										
	2007	2008	2009	2010	2011	2012	2013	2014	2015	%
Street	26	30	32	17	10	16	7	20	36	53.4
Sheltered	16	13	10	11	6	9	15	20	23	33.9
Unknown	1	7	1	4	9	3	5	5	11	12.7
Total	43	50	43	32	25	28	27	45	70	100

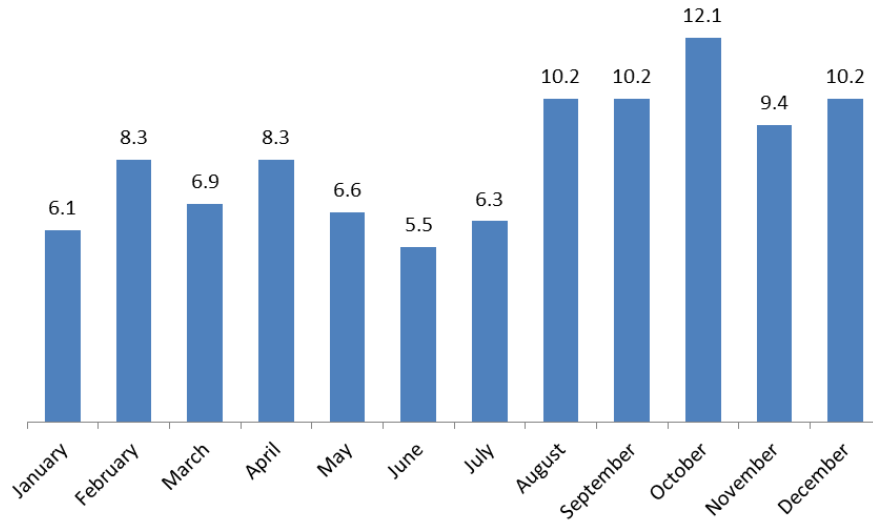
Gender, by Year of Death										
	2007	2008	2009	2010	2011	2012	2013	2014	2015	%
Female	8	7	6	4	3	5	4	5	8	13.8
Male	35	43	37	28	22	23	23	40	62	86.2
Total	43	50	43	32	25	28	27	45	70	100

Age Group, by Year of Death									
	2007	2008	2009	2010	2011	2012	2013	2014	2015
10-19	-	1	-	-	-	-	-	1	-
20-29	5	6	1	4	4	5	3	5	11
30-39	6	9	6	11	4	5	8	8	13
40-49	17	14	19	8	5	10	7	9	24
50-59	12	16	14	6	7	4	4	16	14
60-69	2	4	2	2	5	2	5	4	5
70-79	1	-	1	1	-	-	-	2	3
80+	-	-	-	-	-	2	-	-	-
Total	43	50	43	32	25	28	27	45	70



Percentage of Reported Deaths by Age Group – Homeless Individuals, 2007-2015

Month of Death									
	2007	2008	2009	2010	2011	2012	2013	2014	2015
January	2	4	2	1	2	3	1	5	2
February	3	4	6	1	3	3	2	2	6
March	3	4	-	2	2	2	3	2	7
April	4	7	3	2	2	1	2	5	4
May	6	4	2	3	1	1	2	3	2
June	1	1	-	5	3	-	2	4	4
July	3	3	3	2	2	-	1	4	5
August	5	1	4	5	1	2	2	9	8
September	4	5	1	3	3	6	1	3	11
October	5	8	10	5	3	3	3	4	3
November	3	4	6	1	1	3	7	2	7
December	4	5	6	2	2	4	1	2	11
Total	43	50	43	32	25	28	27	45	70



Percentage of Reported Deaths by Month - Homeless Individuals, 2007-2015

Classification, by Year of Death										
	2007	2008	2009	2010	2011	2012	2013	2014	2015	%
Accidental	26	25	22	16	10	12	10	23	40	50.7
Natural	10	16	9	5	10	6	8	12	13	24.5
Suicide	3	4	7	6	3	5	3	7	7	12.4
Undetermined	4	2	3	4	1	5	5	1	8	9.1
Homicide	-	3	2	1	1	-	1	2	2	3.3
Total	43	50	43	32	25	28	27	45	70	100



BC Coroners Service

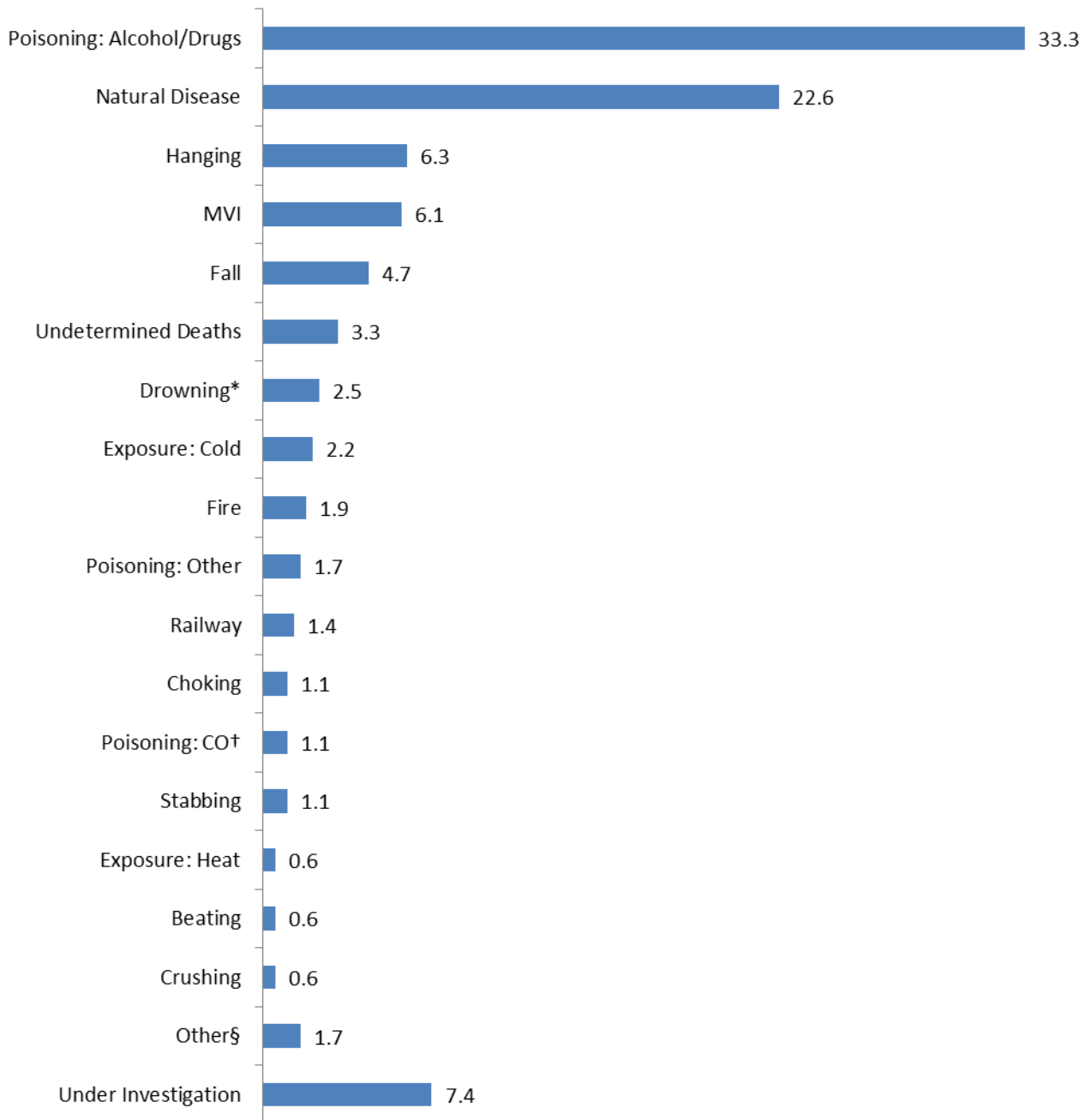
Reportable Deaths of Homeless Individuals, 2007 - 2015

Means of Death									
	2007	2008	2009	2010	2011	2012	2013	2014	2015
Poisoning: Alcohol/Drugs	15	12	10	13	5	9	10	13	34
Natural Disease	8	16	9	5	10	6	7	8	13
MVI	5	5	2	1	3	1	2	2	1
Hanging	2	2	4	1	1	3	2	2	6
Fall/Jump	3	5	3	1	2	-	-	2	1
Undetermined Deaths	5	0	2	1	-	2	1	1	-
Drowning*	2	3	-	2	-	-	-	1	1
Fire	-	2	3	-	-	2	-	-	-
Exposure: Cold	1	1	2	1	2	-	1	-	-
Poisoning: Other	-	-	-	2	-	2	-	2	-
Railway	-	1	-	-	-	1	-	3	-
Stabbing	-	-	1	-	1	-	-	2	-
Poisoning: CO [†]	-	-	1	2	-	-	-	1	-
Choking	1	-	2	-	-	-	1	-	-
Crushing	-	1	1	-	-	-	-	-	-
Beating	-	1	1	-	-	-	-	-	-
Exposure: Heat	-	-	2	-	-	-	-	-	-
Other [§]	1	1	-	3	-	1	-	-	-
Under Investigation	-	-	-	-	1	1	3	8	14
Total	43	50	43	32	25	28	27	45	70

* "Drowning" does not include deaths with a means of death of "Fall" or "Motor Vehicle Incident"

† "Poisoning: CO" does not include deaths with a means of death of "Fire"

§ Categories with <2 deaths for 2007-2015 were grouped under "Other"



Percentage of Reported Deaths by Means of Death- Homeless Individuals, 2007-2015



BC Coroners Service

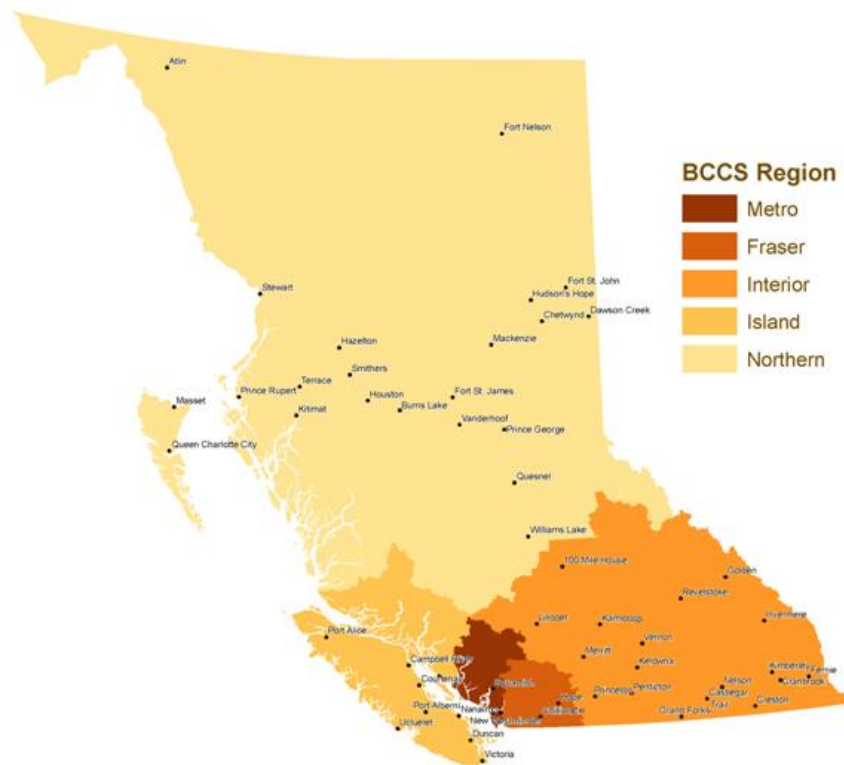
Reportable Deaths of Homeless Individuals, 2007 - 2015

Region	2007	2008	2009	2010	2011	2012	2013	2014	2015	%
Metro	11	18	15	12	9	12	7	8	16	29.8
Island	14	12	10	6	5	7	8	9	13	23.1
Fraser	8	10	9	8	5	6	7	14	30	26.7
Interior	8	7	6	3	5	-	2	8	7	12.7
Northern	2	3	3	3	1	3	3	6	4	7.7
Total	43	50	43	32	25	28	27	45	70	100

Township of Death*, 2007-2015		
	Deaths	%
Vancouver	81	22.3
Victoria	43	11.8
Surrey	33	9.1
New Westminster	15	4.1
Kelowna	14	3.9
Campbell River	11	3.0
Prince George	11	3.0
Maple Ridge	10	2.8
Kamloops	9	2.5
Nanaimo	9	2.5
North Vancouver	9	2.5
Abbotsford	8	2.2
Chilliwack	8	2.2
Burnaby	6	1.7
Duncan	6	1.7
Langley	6	1.7
Mission	6	1.7
Vernon	5	1.4
Other	73	20.1
Total	363	100.0

* Townships with <5 deaths were grouped under "Other".

BC CORONERS SERVICE REGIONS



Northern Region: Includes the region north, east and west from 100 Mile House to all Provincial borders, and Haida Gwaii.

Metro Region: Sunshine Coast, Sea to Sky Corridor, North Shore, Vancouver, UBC, Burnaby, Richmond, and Delta.

Fraser Region: Includes Coquitlam and Surrey to the Coquihalla Highway summit, east to Manning Park and north to Jackass Mountain bordering Merritt.

Interior Region: Includes the region north to 100 Mile House and Blue River, east to the Alberta border, south to the USA border and west to the Manning Park gate, including Ashcroft, Lytton and Lillooet.

Island Region: All of Vancouver Island, the Gulf Islands, and Powell River.