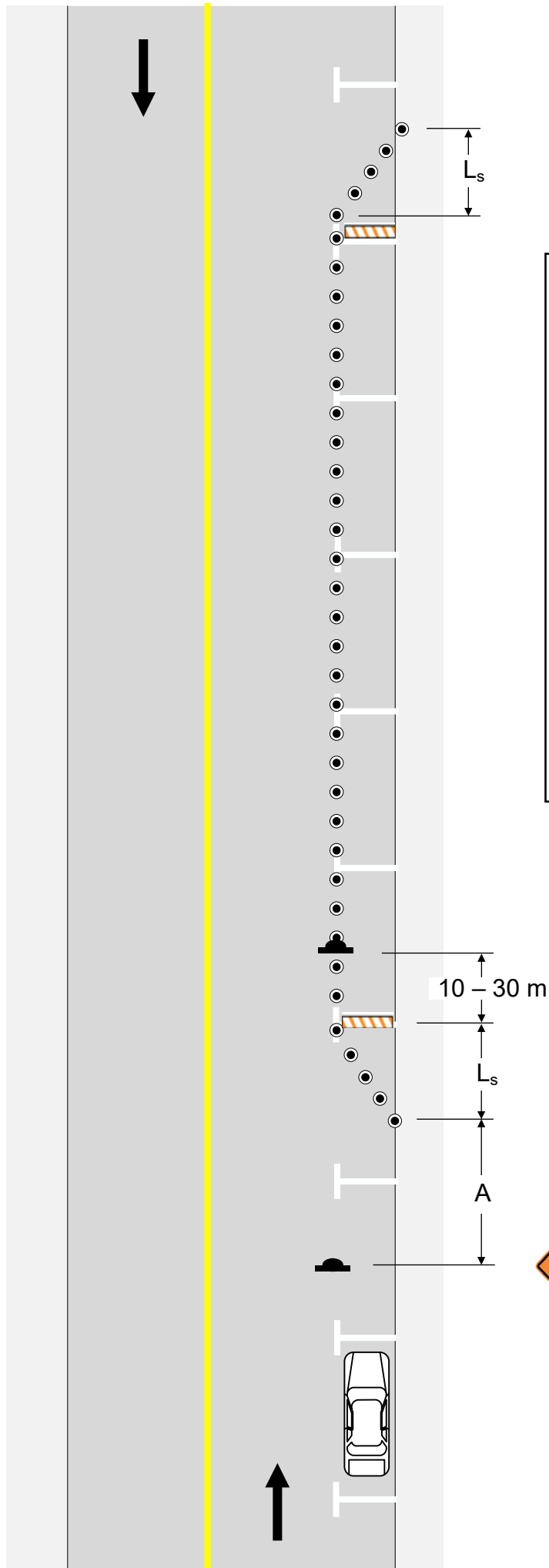


Parking Lane Closure



Notes:

- Cover parking meters or install no parking signage (P-001) at regular intervals.
- Within the closed lane, install local physical distancing signs at regular intervals.
- If the closed parking lane is used by pedestrians, consider installing ramps between the sidewalk and road level. If the closed parking lane is also used by cyclists, mark the end of each ramp with a cone or tubular marker.
- The B-G-002 may be replaced by other similar signage showing pedestrian and/or cyclist use



B-G-002



Zc-030-16