

## B. BERRY ENTERPRISES LIMITED



### **SUCCESS IN RESIDUAL HARVESTING**

I would like to talk to you about some ideas for removing residual biomass in the woods on the west coast of Vancouver Island. These ideas will involve synergies between companies, logistics and politics.







## **B. BERRY ENTERPRISES LIMITED**

### **BRAD BERRY**

How to determine a successful operation?

Looking for the harvest area and what are the obstacles?

Whose land is it?(crown or private)

What permits are required?

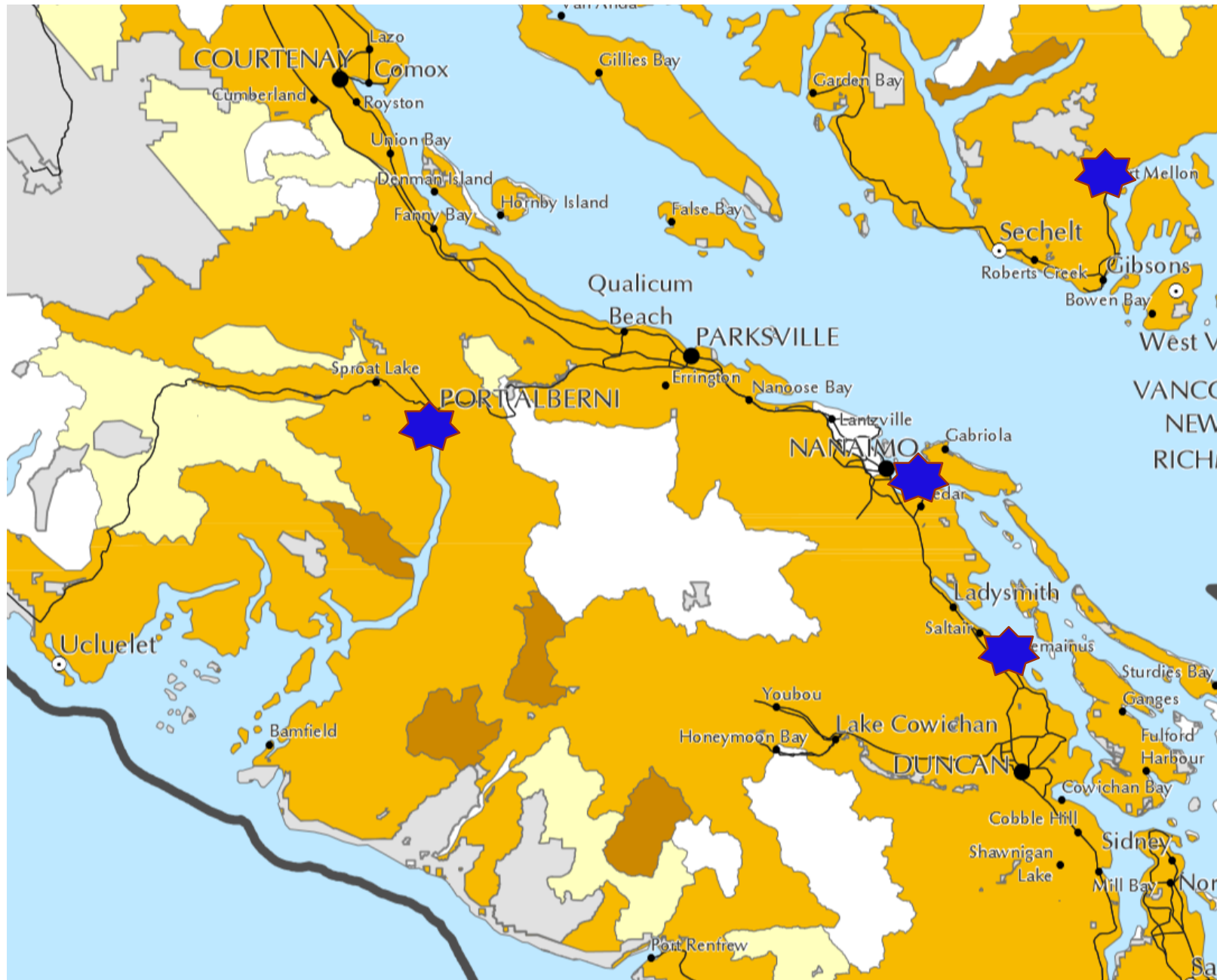
How much recoverable fiber is there and how do you tell?

Access for equipment tool box?

Distance to client base and what is the most economical logistics?







## FIBER RECOVERY ZONE - THE HARVEST AREA

How far away is the fiber?

Is it economical? (depends on distance and egress) The ministry says it's all economical within the zone. \$50.00 per m<sup>3</sup>

What is the volume of accumulations?

Are there other works in the area that can generate revenue? Such as road deactivation, ditching, slope stabilization?







## THE TOOL BOX

What equipment is needed?

Chipper

Grinder

Which machine will be the best in this location?







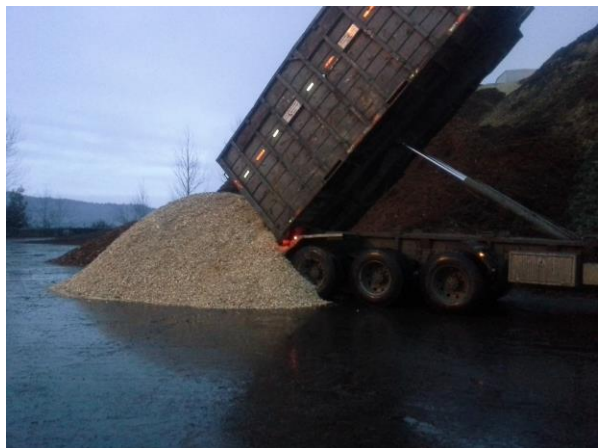
## LOGISTICS

Which truck will work or what combination of trucks work for this location? Or barge?

Logistics is by far the biggest hurdle. You can grind and chip and the hourly cost is relative but hauling the finished product is altogether a different animal.







## USES

Firewood sales

- species dependant

Hog fuel

- Any species

Paper chip

- species dependant

Hog chip

- any species





## SYNERGY

Who are your clients?

Have you explained to them the cost analysis?

What's the benefit to them?

Lower fire hazard abatement while increasing fiber residuals to companies that are in need.







# THANK YOU!

For further information  
please contact:

Brad Berry

B.Berry Enterprises Ltd

Port Alberni, BC

(250) 720-9047

[berrybj@telus.net](mailto:berrybj@telus.net)

