



Pre Harvest Waste Assessment Method & Special Forest Products



- The Forestry Fibre Working Group has been working on the Minister's mandate to improve fibre utilization by making fibre more readily available to Secondary Manufacturing Facilities.
- The Pre Harvest Waste Assessment is being introduced as a mechanism to improve fibre utilization in the Interior.

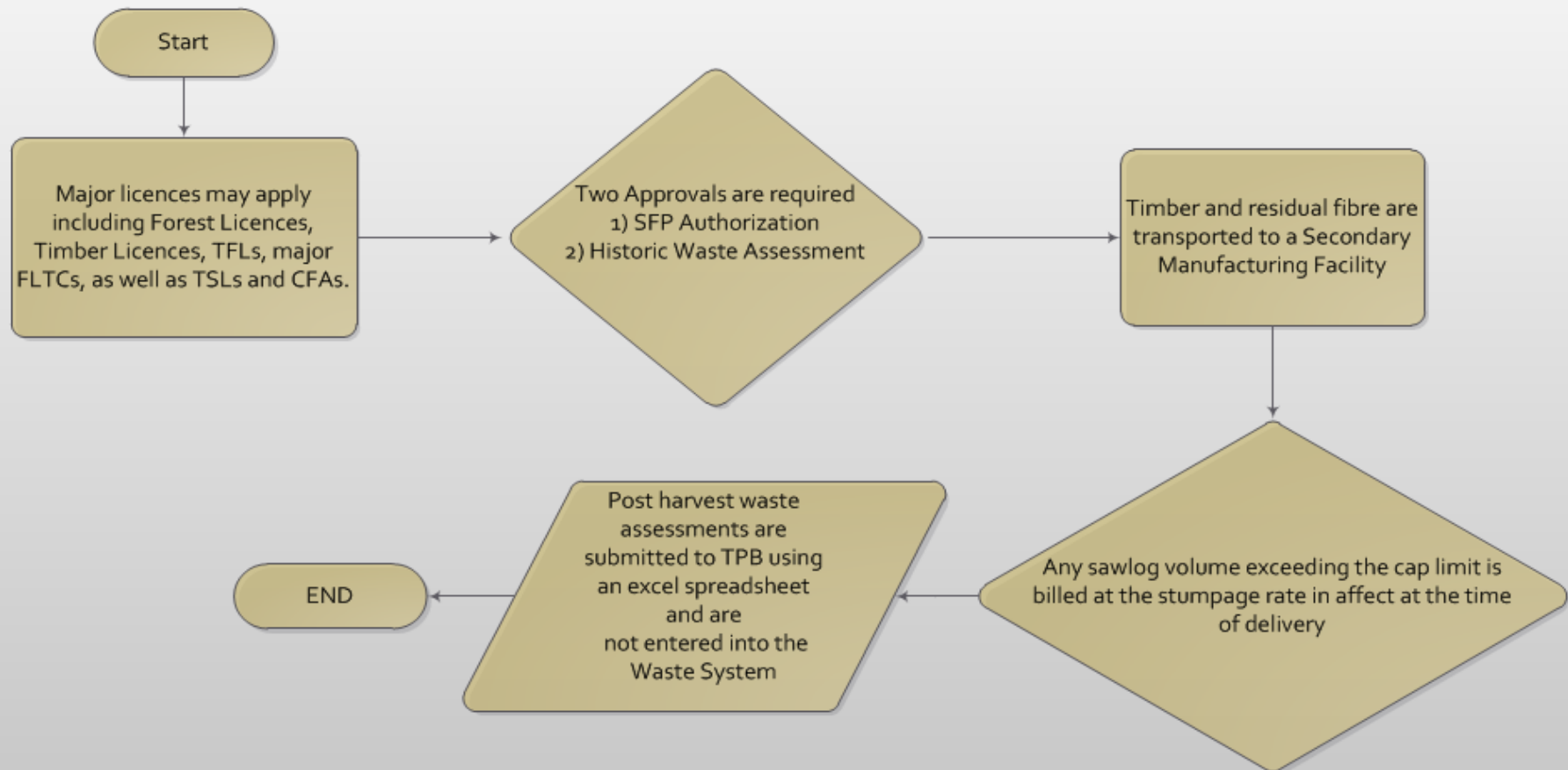
Celgar Pulp Mill



Prepared by:
Shawna Young, RPF
Provincial Residue and Log Salvage
Policy Forester, TPB

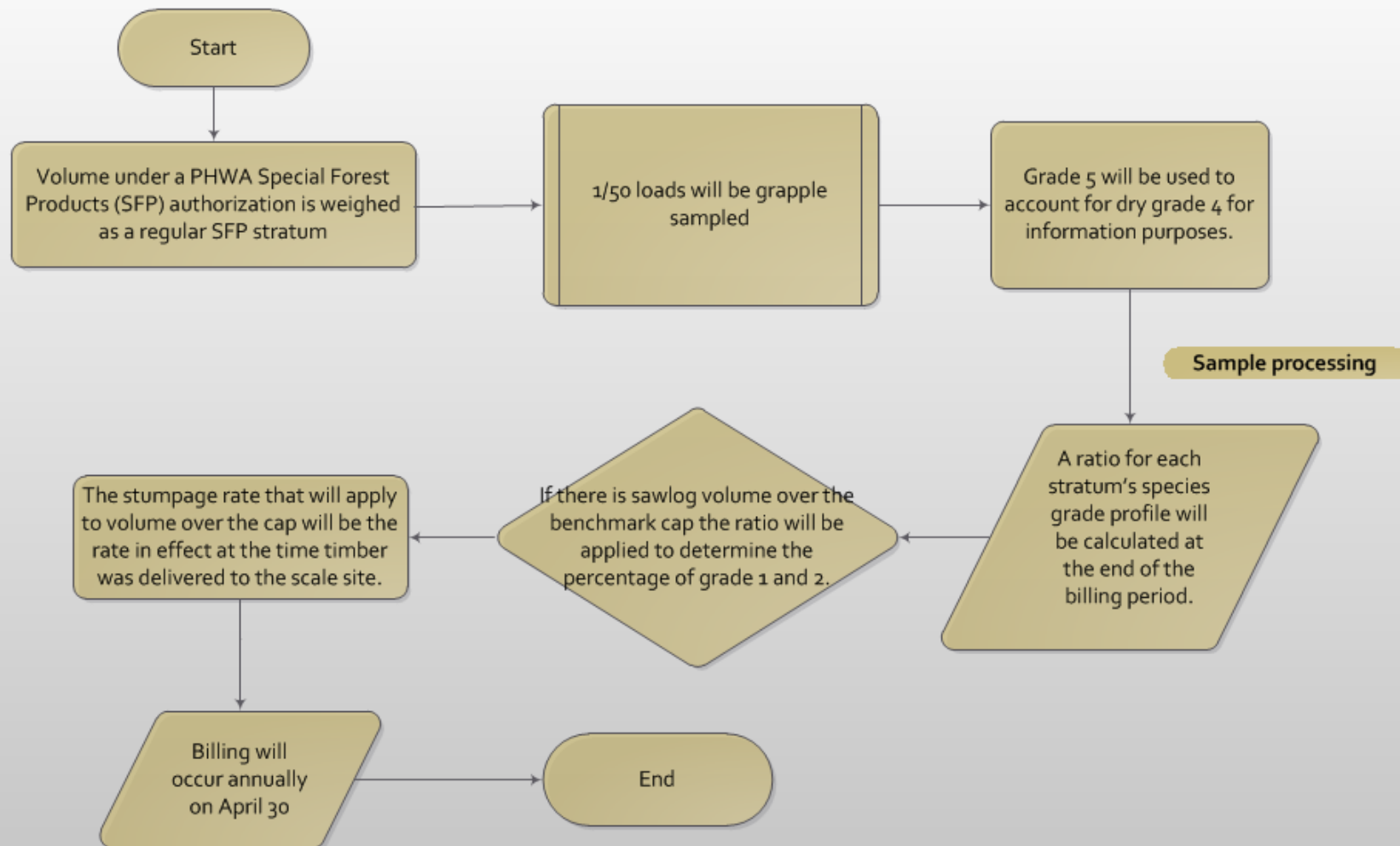
PHWA

Pre Harvest Waste Assessment process for transporting Special Forest Product concurrent with harvesting



PHWA

PHWA Scaling and Billing Process



PHWA



SFP Authorization Conditions:

- Need a SFP authorization to transport and scale timber for the purpose of manufacturing it into SFP.
- Applications will only be accepted for approved cutblocks where no cutting has occurred.
- The historic waste assessment must be approved before timber for SFPs can be transported.
- Identifies the Cutting Authorities, scale sites and secondary manufacturing facilities.

PHWA



SFP Authorization conditions:

- Upon approval of the PHWA SFP authorization the volume will be delivered to a scale site and can't be re-inventoried, sorted or resold.
- Timber can not be manufactured into a product other than a SFP.
- Load description slips must indicate:
 - 1) it is critical that the exact cut block identifier from the Cutting Permit document is identified on the load description slip in order to track the volume in HBS.
 - 2) the check box '*other*' is ticked and a statement needs to be made stating that the wood will be manufactured into SFPs.

PHWA



SFP Authorization Conditions:

- Licensees will set up the strata needed to determine the species grade profile above the benchmark cap with Area scaling staff.
- Timber scaled as grade 1 and 2 in excess of the allowable cap limit will be billed at the stand rate in effect at the time of delivery.
- Licensees are required to submit a Post Harvest Waste Assessment to Timber Pricing Branch.
- A District Manager may cancel an authorization at any time for non compliance with its conditions.

PHWA



Summary of the process for filling out the PHWA Volume Calculator using the historic waste information.

Identify the BEC zone and then using the Benchmark and BEC Zone table from Appendix 5 identify whether the zone is within the Dry, Transition or Wet Belt Benchmark zone.

Use the benchmark zone to identify the historic volume/hectare listed in table A-2 in Appendix 7 and enter it into the volume calculator as shown below.

PHWA HWI Volume Calculator													
Block	10	Area (ha)	25.5	Historic m3/ha		10.6	Total m3	270.300	Totals (Information only)				
Cruise Species		Grades											
Species	%	1			2			4			Grade %	Species m3/ha	Species Vol (M3)
		% Spp	Vol by Spp	m3/ha	% Spp	Vol by Spp	m3/ha	% Spp	Vol by Spp	m3/ha			
LO	45%	1%	1.216	0	61%	74.197	2.91	38%	46.221	1.81	100%	4.770	121.635
FI	25%	1%	0.676	0.03	33%	22.300	0.87	66%	44.600	1.75	100%	2.650	67.575
Sp	22%	1%	0.595	0.02	65%	38.653	1.52	34%	20.218	0.79	100%	2.330	59.466
AS	8%	1%	0.216	0.01	62%	13.407	0.53	37%	8.001	0.31	100%	0.850	21.624
			0.000	0		0.000	0		0.000	0	0%	0.000	0.000
			0.000	0		0.000	0		0.000	0	0%	0.000	0.000
			0.000	0		0.000	0		0.000	0	0%	0.000	0.000
			0.000	0		0.000	0		0.000	0	0%	0.000	0.000
			0.000	0		0.000	0		0.000	0	0%	0.000	0.000
			0.000	0		0.000	0		0.000	0	0%	0.000	0.000
	100%		2.703	0.11		148.557	5.83		119.040	4.66		10.6	270.300

Table A-2 Average Volume/Hectare of Avoidable Waste by District

Area	Region	District		Benchmark Zones		
		Name	Symbol	Dry Belt	Transition	Wet Belt
North	Northeast RNO	Fort Nelson	DFN		4.1	
		Peace	DPC		11.0	12.4
	Omineca ROM	Fort St James	DJA	10.6	7.5	12.6
		Mackenzie	DMK		7.7	7.2
		Prince George	DPG	1.9	7.9	12.4
		Vanderhoof	DVA	3.2	6.0	
	Skeena RSK	Coast Mountain	DKM			83.1
		Nadina	DND	11.5	11.1	14.2
		Skeena Stikine	DSS		15.9	50.0
South	Cariboo RCB	Cariboo Chilcotin	DCC	3.2	6.3	10.6
		100 Mile	DMH	2.6	6.2	6.6
		Quesnel	DQU		5.2	5.9
	Kootenay/ Boundary RKB	Rocky Mountain	DRM	2.7	6.3	4.7
		Selkirk	DSE	5.4	8.0	13.9
	Thompson/ Okanagan RTO	Cascades	DCS	4.2	5.4	5.5
		Thompson Rivers	DKA	9.7	9.3	11.0
Okanagan Shuswap		DOS	6.2	7.7	11.0	

Note: Cells Highlighted

Most likely will not exist within the district.

PHWA



Enter the % species distribution from the Cruise Compilation into the volume calculator.

Use the Table called “Avoidable Waste Distribution by Grade and Species” from Appendix 7 and enter the values for the species that are in the wet belt zone for the applicable district.

PHWA HWI Volume Calculator													
Block	10	Area (ha)	25.5		Historic m3/ha	10.6		Total m3	270.300		Totals (Information only)		
Cruise Species		Grades											
		1			2			4					
Species	%	% Spp	Vol by Spp	m3/ha	% Spp	Vol by Spp	m3/ha	% Spp	Vol by Spp	m3/ha	Grade %	Species m3/ha	Species Vol (M3)
LO	45%	1%	1.216	0	61%	74.197	2.91	38%	46.221	1.81	100%	4.770	121.635
FI	25%	1%	0.676	0.03	33%	22.300	0.87	66%	44.600	1.75	100%	2.650	67.575
Sp	22%	1%	0.595	0.02	65%	38.653	1.52	34%	20.218	0.79	100%	2.330	59.466
AS	8%	1%	0.216	0.01	62%	13.407	0.53	37%	8.001	0.31	100%	0.850	21.624
			0.000	0		0.000	0		0.000	0	0%	0.000	0.000
			0.000	0		0.000	0		0.000	0	0%	0.000	0.000
			0.000	0		0.000	0		0.000	0	0%	0.000	0.000
			0.000	0		0.000	0		0.000	0	0%	0.000	0.000
			0.000	0		0.000	0		0.000	0	0%	0.000	0.000
			0.000	0		0.000	0		0.000	0	0%	0.000	0.000
	100%		2.703	0.11		148.557	5.83		119.040	4.66		10.6	270.300

Lodgepole Pine	1	2%	1%	1%
	2	61%	57%	61%
	4	37%	42%	38%

PHWA

Once the block area, historic waste %, and species/grade % are entered the Volume by Species is automatically calculated.

PHWA HWI Volume Calculator													
Block	10	Area (ha)		25.5	Historic m3/ha		10.6	Total m3		270.300	Totals (Information only)		
Cruise Species		Grades											
		1			2			4			Grade	Species	Species
Species	%	% Spp	Vol by Spp	m3/ha	% Spp	Vol by Spp	m3/ha	% Spp	Vol by Spp	m3/ha	%	m3/ha	Vol (M3)
LO	45%	1%	1.216	0	61%	74.197	2.91	38%	46.221	1.81	100%	4.770	121.635
FI	25%	1%	0.676	0.03	33%	22.300	0.87	66%	44.600	1.75	100%	2.650	67.575
Sp	22%	1%	0.595	0.02	65%	38.653	1.52	34%	20.218	0.79	100%	2.330	59.466
AS	8%	1%	0.216	0.01	62%	13.407	0.53	37%	8.001	0.31	100%	0.850	21.624
			0.000	0		0.000	0		0.000	0	0%	0.000	0.000
			0.000	0		0.000	0		0.000	0	0%	0.000	0.000
			0.000	0		0.000	0		0.000	0	0%	0.000	0.000
			0.000	0		0.000	0		0.000	0	0%	0.000	0.000
			0.000	0		0.000	0		0.000	0	0%	0.000	0.000
			0.000	0		0.000	0		0.000	0	0%	0.000	0.000
	100%		2.703	0.11		148.557	5.83		119.040	4.66		10.6	270.300

See the document called “PHWA Waste System Data Entry Steps” for a detailed example of the data entry steps.

PHWA



Once the volume calculator table is filled out the volume per species and grade is entered into the Waste System using the ocular assessment format.

- Licensee submits the Historic Waste Information into the Waste System by creating a unique Reporting Unit and adding the block(s)
- On waste 102 select Historic Waste Information as the waste type

<u>Dispersed</u>						
Waste Type	Harvest Method	Assessment Method	Plot Size (m ²)	Waste Level	Area (ha)	
<input type="text"/>	<input type="text"/>	<input type="text"/>	<input type="text"/>	<input type="text"/>	<input type="text"/>	<input type="button" value="Save"/> <input type="button" value="Cancel"/>
H - Historic Waste Information	R - Rubber-tired Skidder	O - Ocular Estimate		X - Not Stratified	28.9	<input type="button" value="Details"/> <input type="button" value="Update"/> <input type="button" value="Delete"/>

<u>Accumulation</u>					
Waste Type	Harvest Method	Assessment Method	Plot Size (m ²)	Waste Level	Area (ha)
<input type="text"/>	<input type="text"/>	<input type="text"/>	<input type="text"/>	<input type="text"/>	<input type="text"/>

<u>Standing Trees</u>	
Assessment Method	Net Area
<input type="text"/>	<input type="text"/>

PHWA

Enter the volume by species and grade into
Waste 205.

Waste205 - Ocular Estimate

Reporting Unit ID:	695	Forest District:	DCC - Cariboo-Chilcotin Natural Resource District
Licensee:	TOLKOL 00	Option:	Ocular
Dispersed CV (%):		Accumulated CV (%):	

Licence No:	A57713	Cutting Permit:	31U
Block:	10	Timber Mark:	GC231U
WASTE Block Status:	BIS - Billing Issued	Exempted Block:	N
Harvest Status:	Complete		
Stratum:	HBOM		

12 rows returned

Piece #	Sp.	Kind	Waste Class	Grade	Estimate (m ² /ha)	Estimate Volume (m ³)		
	<input type="text" value="*"/>	<input type="text" value="*"/>	<input type="text" value="A"/>	<input type="text" value="*"/>	<input type="text"/>	<input type="text"/>	<input type="button" value="Save"/>	<input type="button" value="Cancel"/>
1	LO	L	A	1	0.0	1.216	<input type="button" value="Update"/>	<input type="button" value="Delete"/>
2	LO	L	A	2	2.9	74.197	<input type="button" value="Update"/>	<input type="button" value="Delete"/>
3	LO	L	A	4	1.8	46.221	<input type="button" value="Update"/>	<input type="button" value="Delete"/>
4	FI	L	A	1	0.0	0.676	<input type="button" value="Update"/>	<input type="button" value="Delete"/>
5	FI	L	A	2	0.9	23.300	<input type="button" value="Update"/>	<input type="button" value="Delete"/>
6	FI	L	A	4	1.7	44.600	<input type="button" value="Update"/>	<input type="button" value="Delete"/>
7	SP	L	A	1	0.0	0.595	<input type="button" value="Update"/>	<input type="button" value="Delete"/>
8	SP	L	A	2	1.5	38.653	<input type="button" value="Update"/>	<input type="button" value="Delete"/>
10	SP	L	A	4	0.8	20.218	<input type="button" value="Update"/>	<input type="button" value="Delete"/>
11	AS	L	A	1	0.0	0.216	<input type="button" value="Update"/>	<input type="button" value="Delete"/>
12	AS	L	A	2	0.5	13.407	<input type="button" value="Update"/>	<input type="button" value="Delete"/>
13	AS	L	A	4	0.3	8.000	<input type="button" value="Update"/>	<input type="button" value="Delete"/>

PHWA

Pilot term

- The PHWA pilot term is effective August 1, 2016 to April 30, 2018 to allow three full logging seasons.
- TPB will calculate and issue a single invoice for all timber scaled above the cap limit annually on April 30.

PHWA

Contacts

North Area

- Chris Shallow, Regional Area Waste Specialist
- Brian Cornelis, Scaling and Billing Manager

South Area

- Debbie Hartland, Regional Area Waste Specialist
- Victoria Groves, Scaling and Billing Manager

Timber Pricing Branch

- Shawna Young, Provincial Residue and Log Salvage Policy Forester
- Keith Tudor, Timber Measurements Manager
- Cynthia Lidstone, A/Provincial Wood Measurement Specialist