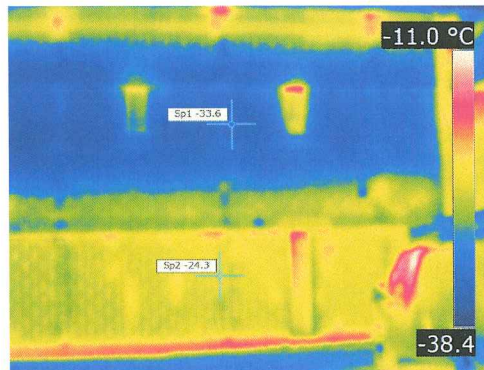


## 2016 Carbon Neutral Action Report

The Board of Education School District No. 91 Nechako Lakes



This Carbon Neutral Action Report for the period January 1<sup>st</sup>, 2016 to December 31<sup>st</sup>, 2016 summarizes our emissions profile, the total offsets to reach net-zero emissions, the actions we have taken in 2016 to reduce our greenhouse gas emissions and our plans to continue reducing emissions in 2017 and beyond.

By June 30, 2017, School District No. 91 Nechako Lakes final *Carbon Neutral Action Report* will be posted to our website at [www.sd91.bc.ca](http://www.sd91.bc.ca)

**Overview:**

*The District continues with its lighting-efficiency strategy by upgrading to LED lighting, reducing fixtures and reducing illumination levels in accordance with Illuminating Engineering Society. Direct Digital Control is now available throughout the district and aging assets continue to be upgraded or retired.*

**Emissions and Offset Summary Table:**

<b>School District No. 91 (Nechako Lakes)</b> <b>GHG Emissions and Offset for 2016 (TCO2E)</b>	
<b>GHG Emissions created in Calendar Year 2016:</b>	
Total Emissions (tCO <sub>2</sub> e)	3,116
Total Offsets (tCO <sub>2</sub> e)	2,127
<b>Adjustments to GHG Emissions Reported in Prior Years:</b>	
Total Emissions (tCO <sub>2</sub> e)	0
Total Offsets (tCO <sub>2</sub> e)	0

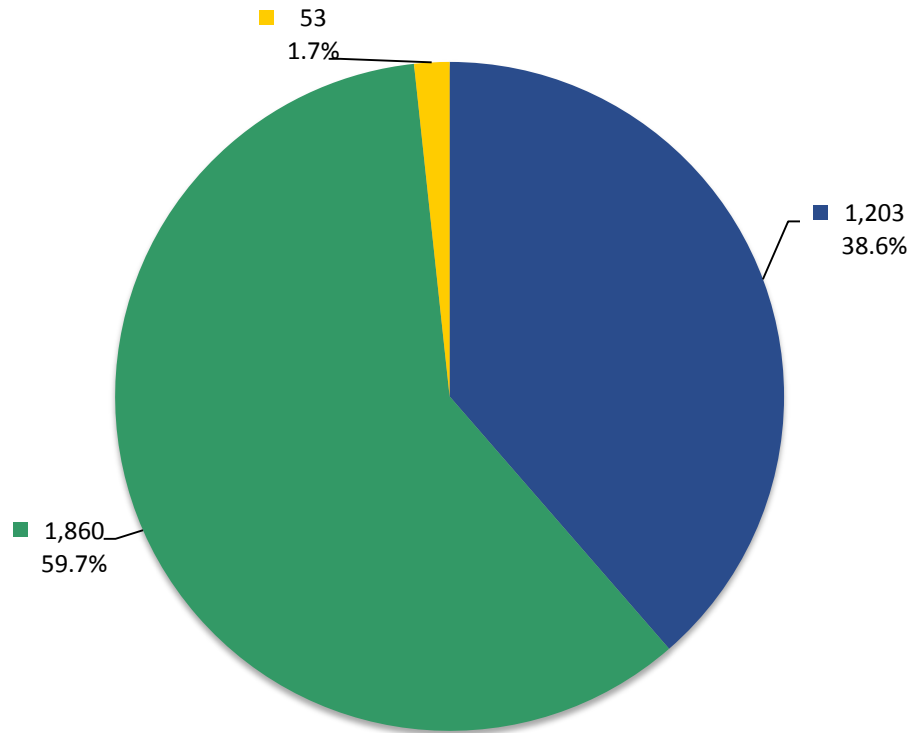
Grand Total Offsets for the 2016 Reporting Year:	
Grand Total Offsets (tCO <sub>2</sub> e)	2,127

In accordance with the requirements of the Greenhouse Gas Reduction Targets Act and Carbon Neutral Government Regulation, School District No. 91 Nechako Lakes (**the Organization**) is responsible for arranging for the retirement of the offsets obligation reported above for the 2016 calendar year, together with any adjustments reported for past calendar years. The Organization hereby agrees that, in exchange for the Ministry of Environment ensuring that these offsets are retired on the Organization's behalf, the Organization will pay the associated invoice to be issued by the Ministry in an amount equal to \$25 per tonne of offsets retired on its behalf plus GST.

**Executive sign-off:**

<p><u><i>Darlene Turner</i></u></p> <p>Signature</p>	<p><u>May 31, 2017</u></p> <p>Date</p>
<p><u>Darlene Turner</u></p> <p>Name (please print)</p>	<p><u>Secretary Treasurer</u></p> <p>Title</p>

**School District 91 - Nechako Lakes  
Greenhouse Gas Emissions by Source  
for the 2016 Calendar Year (tCO<sub>2</sub>e\*)**



**Total Emissions: 3,116**

- Mobile Fuel Combustion (Fleet and other mobile equipment)
- Stationary Fuel Combustion (Building Heating and Generators) and Electricity
- Supplies (Paper)

**Offsets Applied to Become Carbon Neutral in 2016 (Generated May 15, 2017 3:39 PM)**

Total offsets required: **2,127**. Total offset investment: **\$53,175**. Emissions which do not require offsets: **990** \*\*

\*Tonnes of carbon dioxide equivalent (tCO<sub>2</sub>e) is a standard unit of measure in which all types of greenhouse gases are expressed based on their global warming potential relative to carbon dioxide.

\*\* Under the *Carbon Neutral Government Regulation of the Greenhouse Gas Reduction Targets Act*, all emissions from the sources listed above must be reported. As outlined in the regulation, some emissions do not require offsets.

# 2016 Carbon Neutral Action Report Survey

---

## Page 2

### Part One (external)

Contact Name(s):

*Tim Bancroft*

Organization Name:

*SD91 Nechako Lakes*

Please select your sector:

- School District

1) Stationary Sources (Buildings, Power Generators): Fuel Combustion, Electricity use, Fugitive Emissions.

During 2016, did your organization take any of the following actions to support emissions reductions from buildings?

Select all that apply

- Other actions? Please describe briefly.: Implementing actions from Energy Studies

Briefly describe your organization's plans to continue reducing emissions from its stationary sources in future years.

- Retire aging assets and replace/upgrade most inefficient assets
- Purchasing in-direct heating from community biomass heating system

During 2016, did your organization participate in utility-sponsored energy demand management program(s) (e.g. BC Hydro's Energy Management (Manager))?

*Yes*

If yes, please describe briefly:

*BCH Co-op Program*

2) Mobile Sources (Vehicles, Off-road/Portable Equipment): Fuel Combustion.

During 2016, did your organization take any of the following actions to support emission reductions from its mobile sources?

Select all that apply

- 
- Replaced existing vehicles with more fuel efficient vehicles (gas/diesel).: 2
- 

Briefly describe your organization's plans to continue reducing emissions from its mobile sources in future years.

*Continue to replace oldest, most inefficient vehicles*

3) Supplies (Paper):

During 2016, did your organization take any of the following actions to support emissions reductions from paper supplies?

Select all that apply

- 
- Awareness campaign focused on reducing office paper use.
- 
- Other actions? Please describe briefly.: Developing/implementing "Paper Cut" initiative

Briefly describe your organization's plans to continue reducing emissions associated with its office paper use in future years.

*Paper Cut - an initiative that requires employees to enter their password before a print-job will start*

#### 4) Other Sustainability Actions:

##### Business Travel:

During 2016, did your organization take any of the following actions to support emissions reductions from business travel?

Select all that apply

- 
- Encouraged alternative travel for business (e.g. bicycles, public transit, walking)
  - Encouraged or allowed teleworking or working from home
  - Other, please describe briefly: Car-pooling

##### Education Awareness:

During 2016, did your organization have any of the following programs or initiatives to support sustainability education and awareness?

Select all that apply

- 
- Green, Sustainability or Climate Action Team

#### Other Sustainability Actions:

During 2016, did your organization have any of the following programs or initiatives to support sustainability?

Select all that apply

- 
- An operations policy or program to facilitate the reduction and diversion of building occupant waste (e.g., composting, collection of plastics, batteries) from landfills or incineration facilities
  - Other, please describe briefly: Student-lead recycling program, Destination:Conservation