



File: ORCS 17580-30/Yale

**ORDER VARYING
A LANDSCAPE UNIT OBJECTIVE
YALE LANDSCAPE UNIT**

Pursuant to Section 4 (2) of the *Forest Practices Code of British Columbia Act*, I hereby vary the Yale Landscape Unit objective 1, effective February 3, 2005, as attached to this order. The Yale landscape unit is an area located north of Hope, B.C. in the Chilliwack Forest District.

The boundaries of the Yale Landscape Unit and the variance to old growth management areas (OGMAs) are shown on the Yale Landscape Unit map dated October 1, 2004 attached to this Order.

(Original signed by)

February 3, 2005

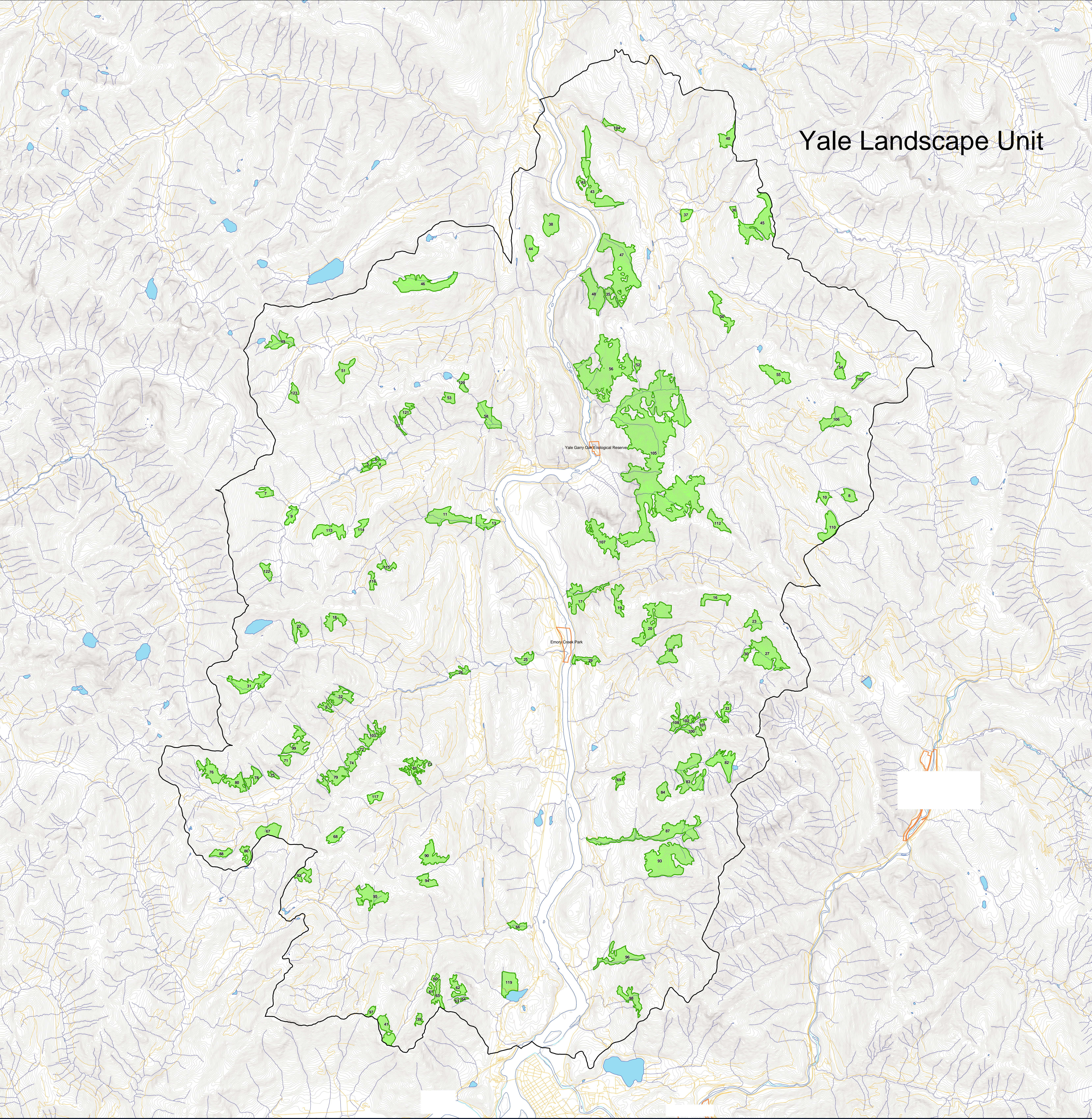
**Regional Director, Coast Region,
Ministry of Sustainable Resource Management**

Date

**Yale Landscape Unit – Legal Objectives
VARIANCE**

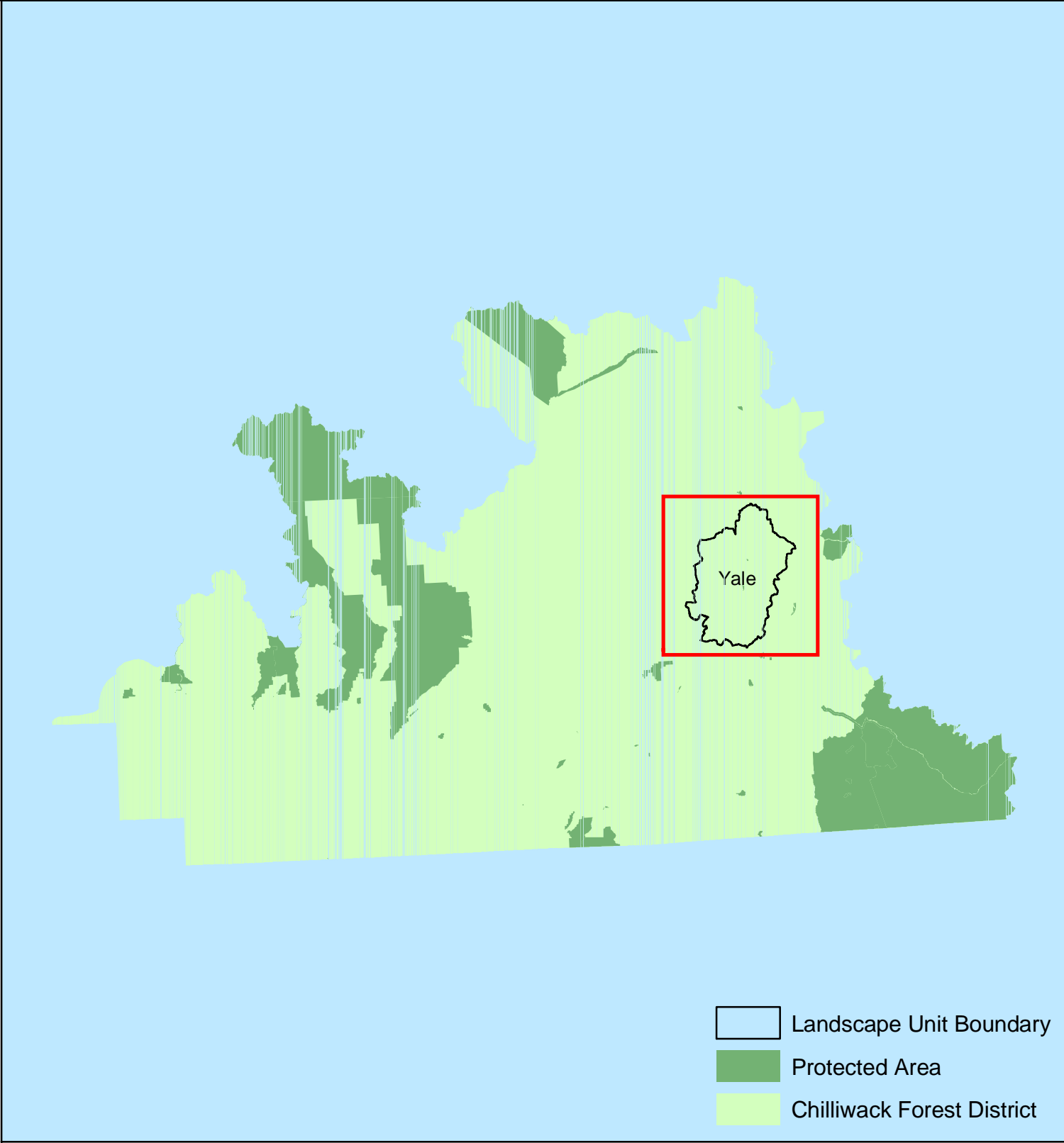
Pursuant to section 4(2) of the *Forest Practices Code of British Columbia Act*, Objective 1 of the Legal Objectives – Yale Landscape Unit is varied as follows:

Maintain or recruit old growth forests in established old growth management areas (OGMAS), as shown on the revised and attached Yale Landscape Unit map dated October 1, 2004 subject to timber harvesting and road construction in accordance with section 2, 3 and 4 of the original Legal objectives Order.



Yale Landscape Unit

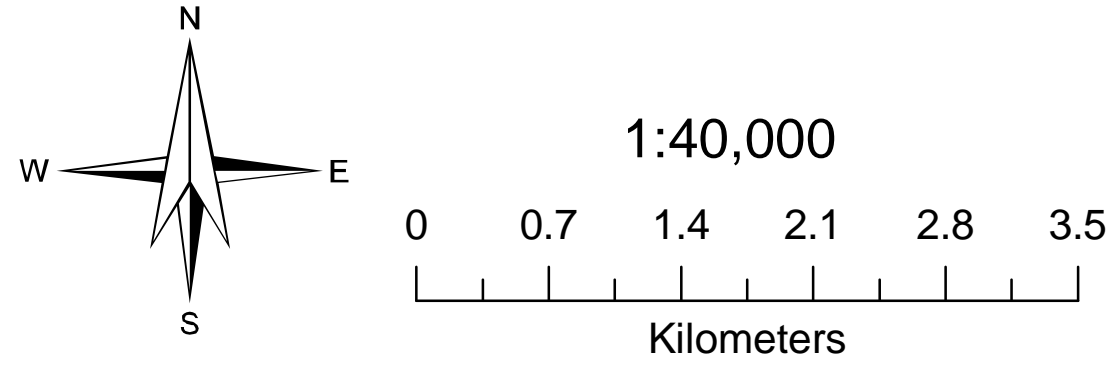
Map Study Area for Yale Landscape Unit



Legend

- OLD GROWTH MANAGEMENT AREAS
- Landscape Unit Boundary
- Biogeoclimatic Ecosystem Boundary
- Protected Area
- Roads
- Creeks
- Contour Lines (20m Interval)
- Lakes and Rivers

Submitted by: AM, MSRM
Date: October 1, 2004
Amendment: (original signed by) Regional Director, Coast Region
Date: February 3, 2005



Produced for:
Resource Management Division

Produced by:
BRITISH COLUMBIA
Ministry of Sustainable Resource Management
Business Solutions Branch

Filepath: \$PROJLIB/rmd/srmp/chilliwack/yale/mxd/YaleLU_LEGAL_Oct1-04.mxd
Projection/Datum: Albers Equal Area - NAD 83
Date Created: 2004-10-01
Created for: Surrey Contact Centre by Instar GIS Solutions