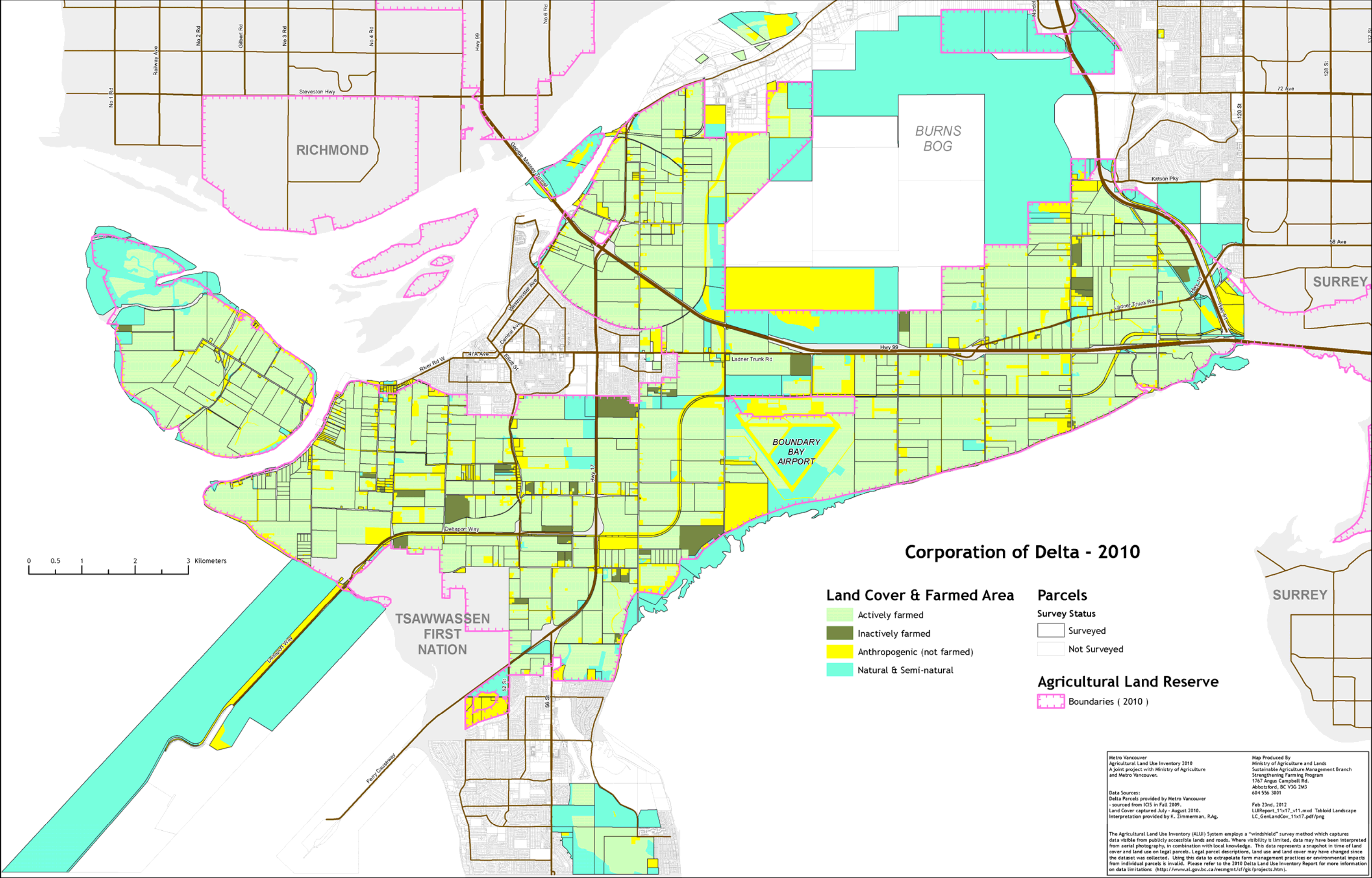
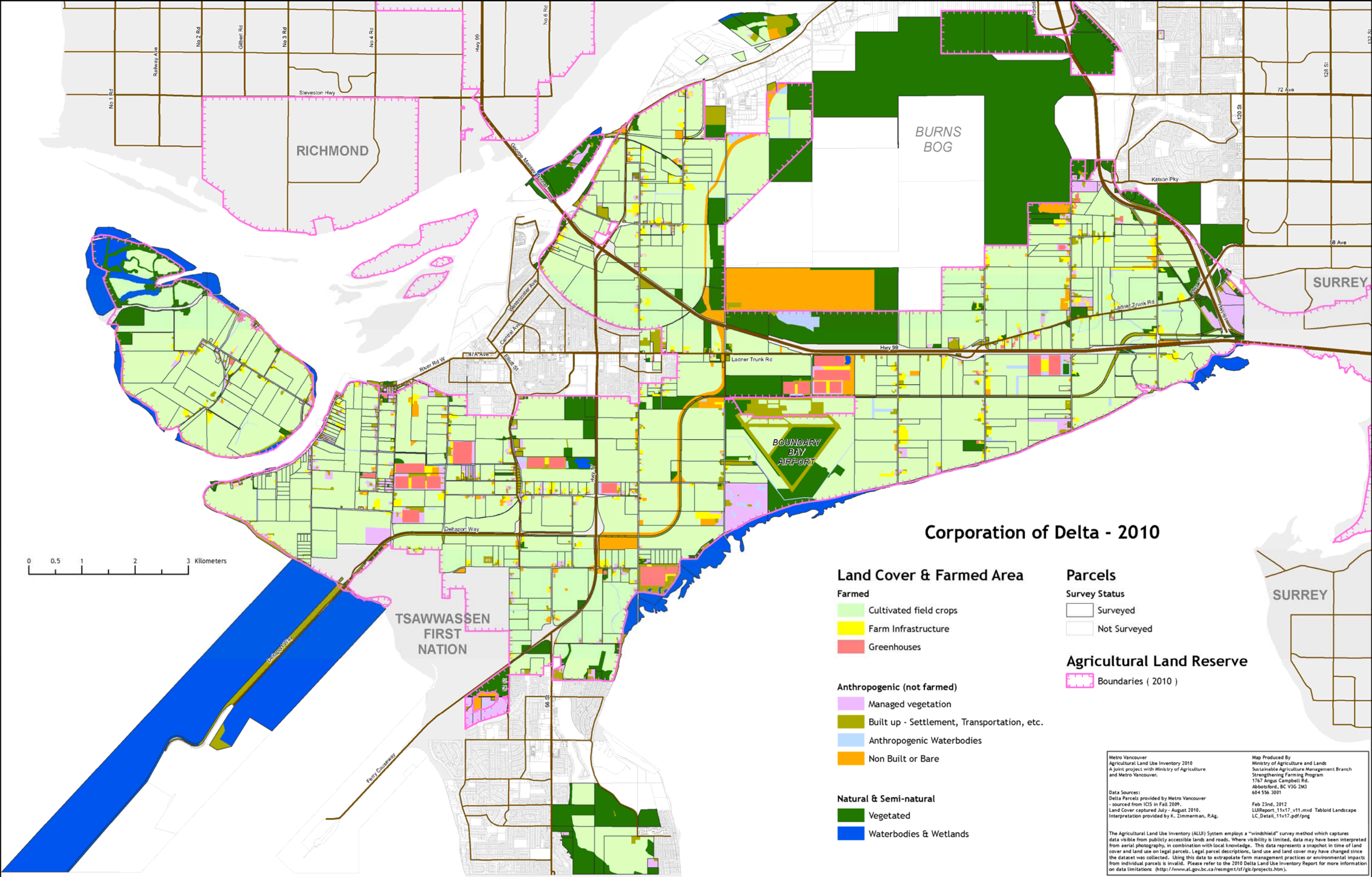


Map B1. Land cover and farmed area

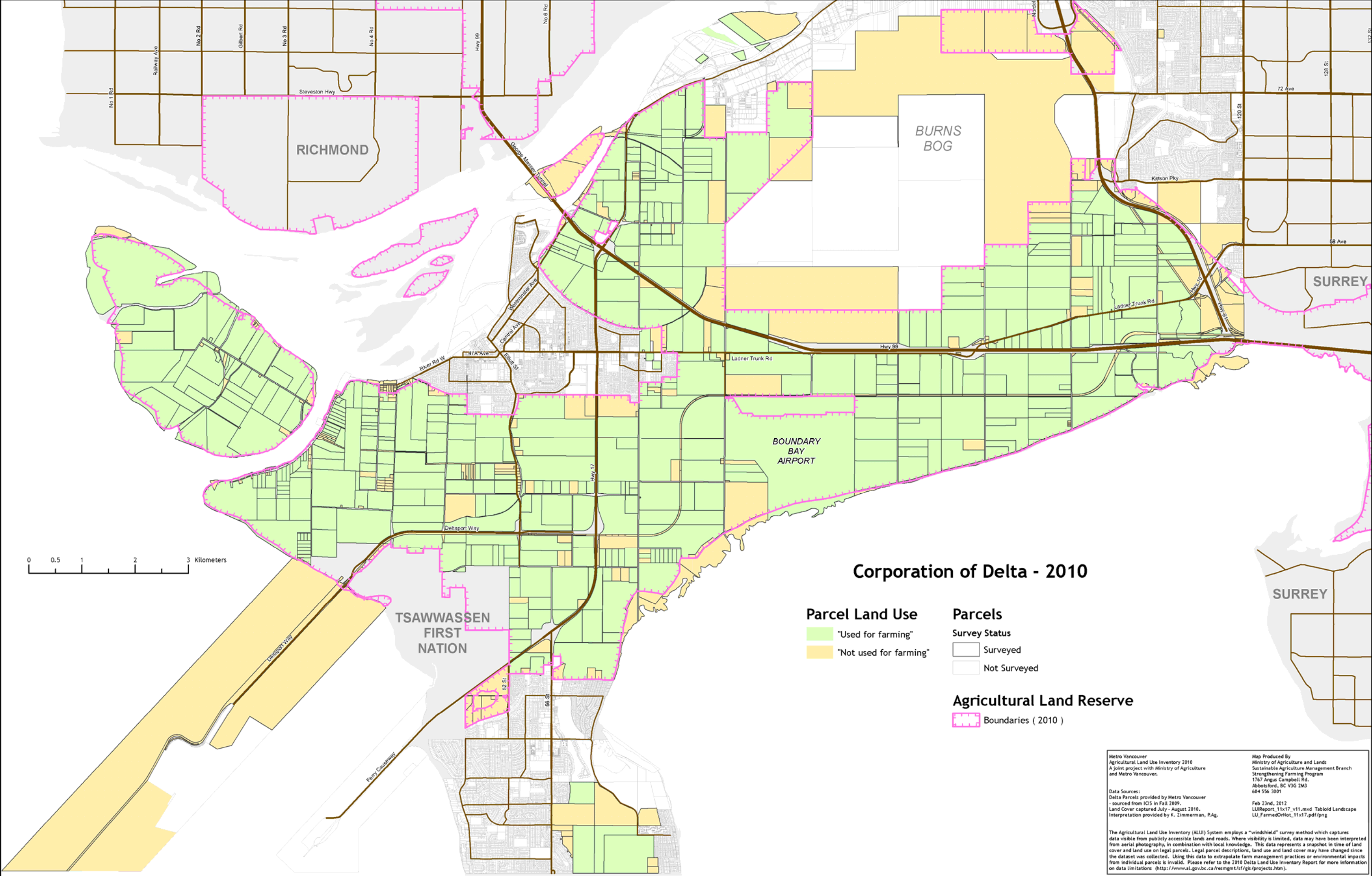




Map B2. Land cover and farmed area - detail

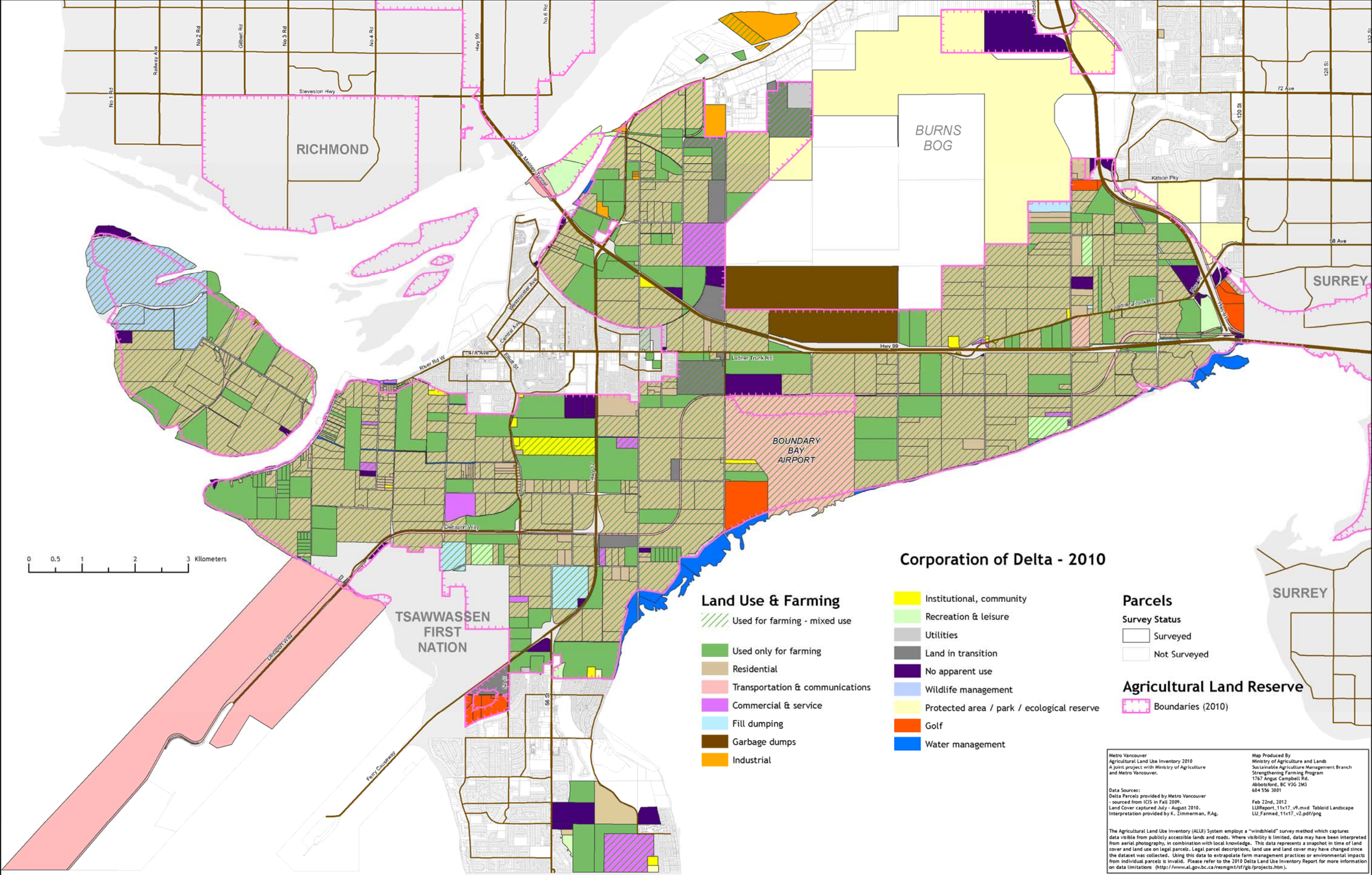


Map B3. Land use and farming use by parcel



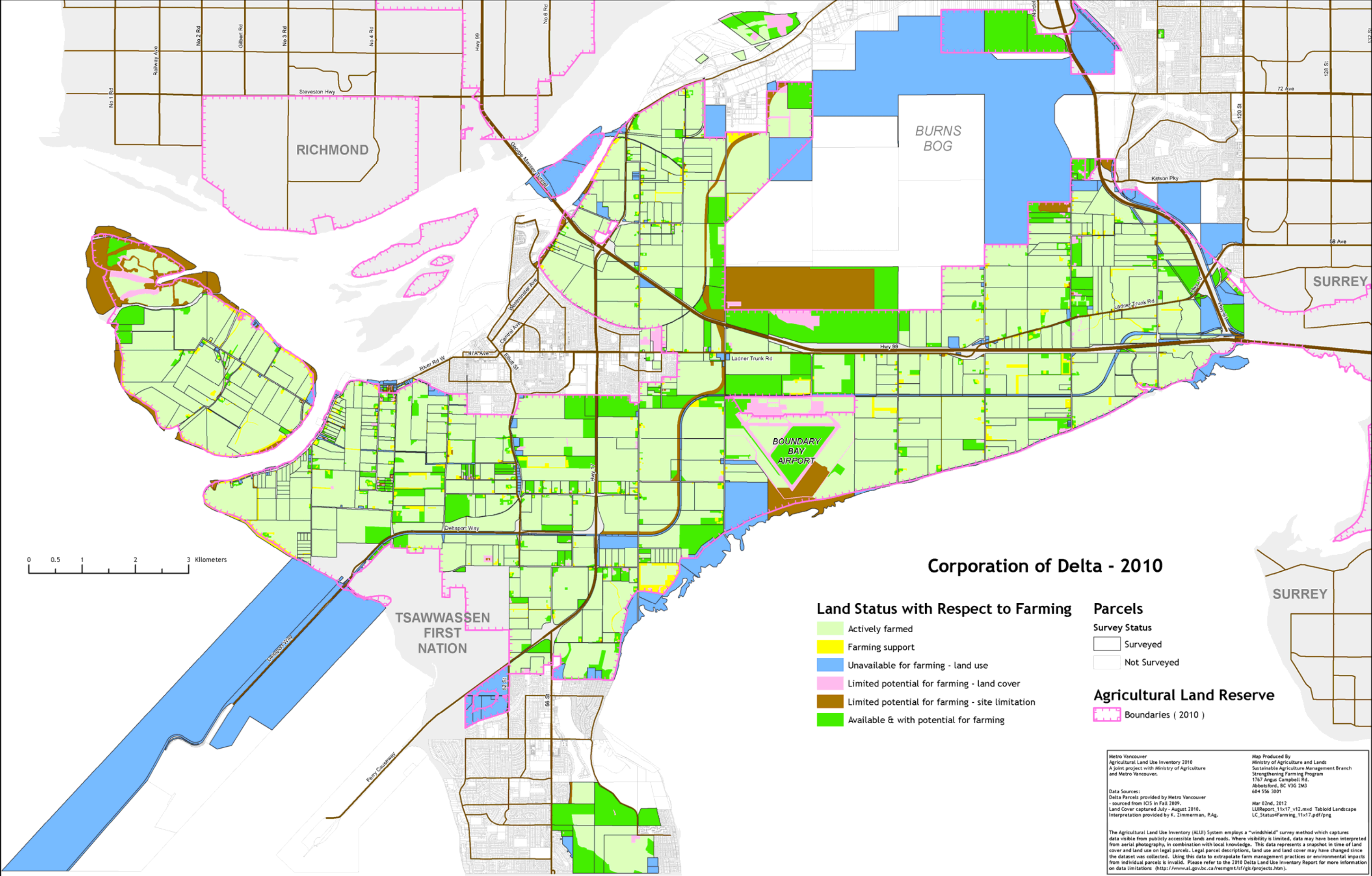


Map B4. Land use and farming use by parcel - detail

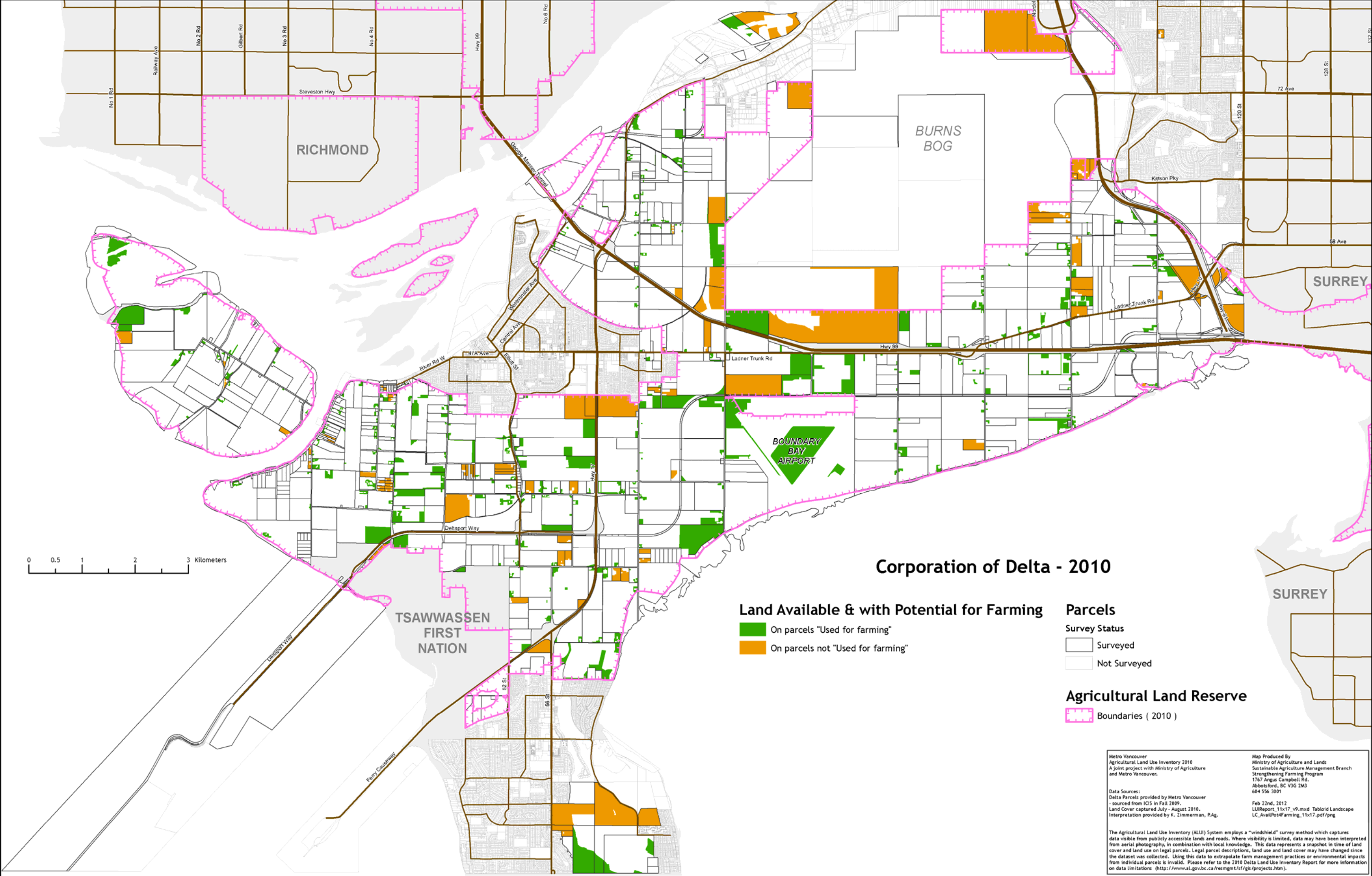




Map B5. Status of land base with respect to farming

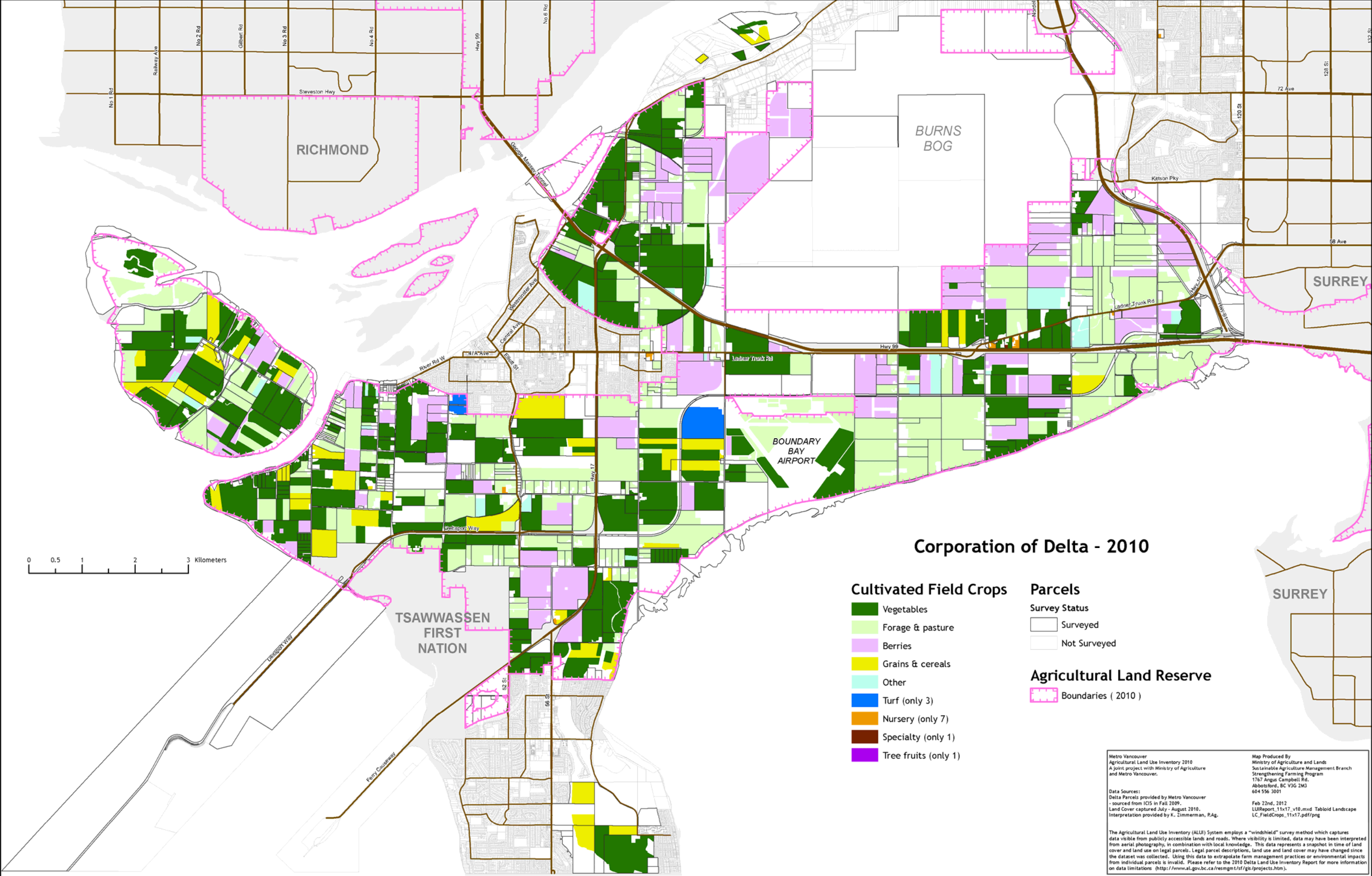


Map B6. Land not farmed but with potential for farming

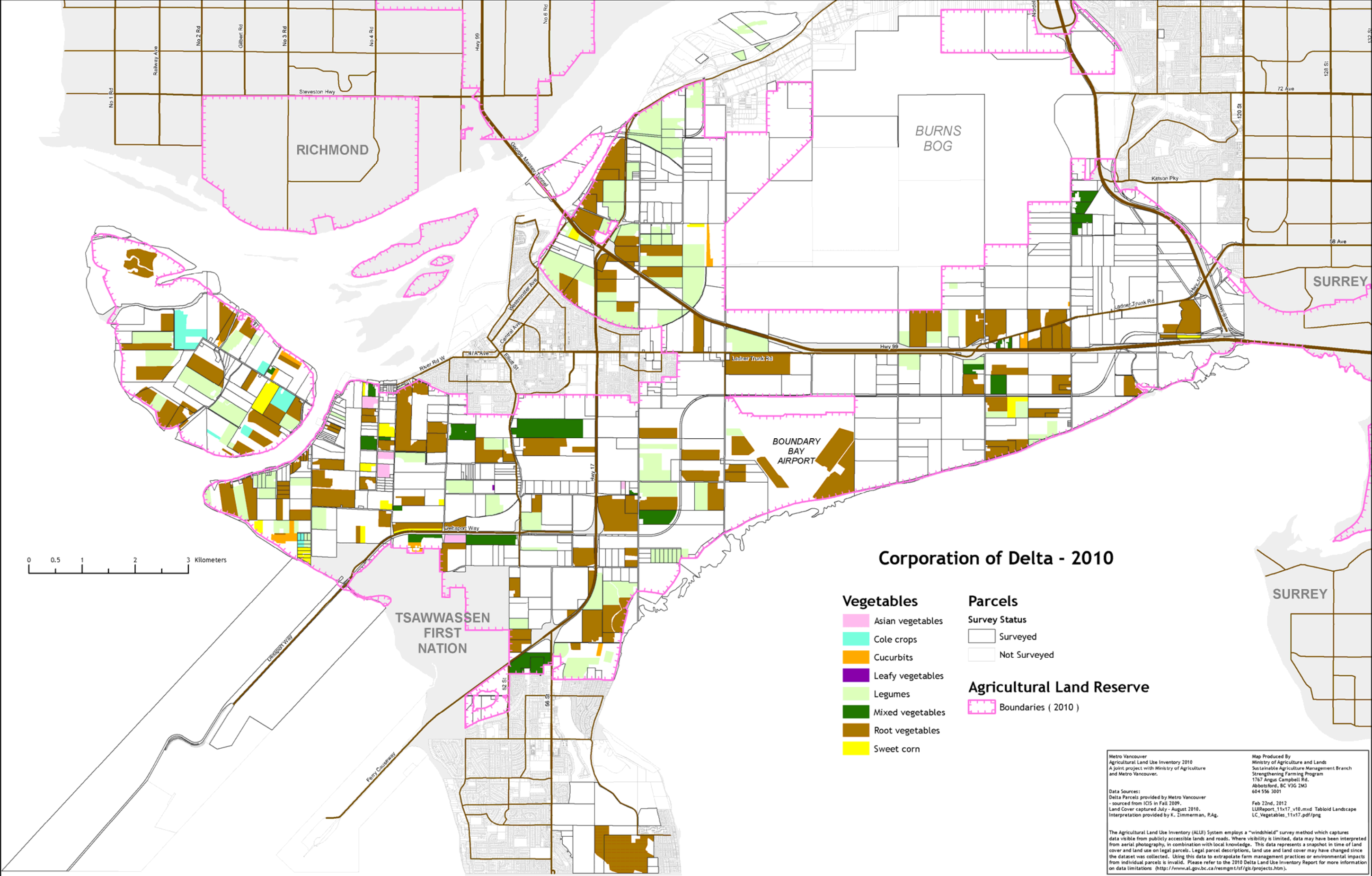




Map B7. Cultivated field crops



Map B8. Vegetable crops



Metro Vancouver  
Agricultural Land Use Inventory 2010  
A joint project with Ministry of Agriculture  
and Metro Vancouver.

Map Produced By  
Ministry of Agriculture and Lands  
Sustainable Agriculture Management Branch  
Strengthening Farming Program  
1767 Angus Campbell Rd.  
Abbotsford, BC V3G 2M3  
604 556 3001

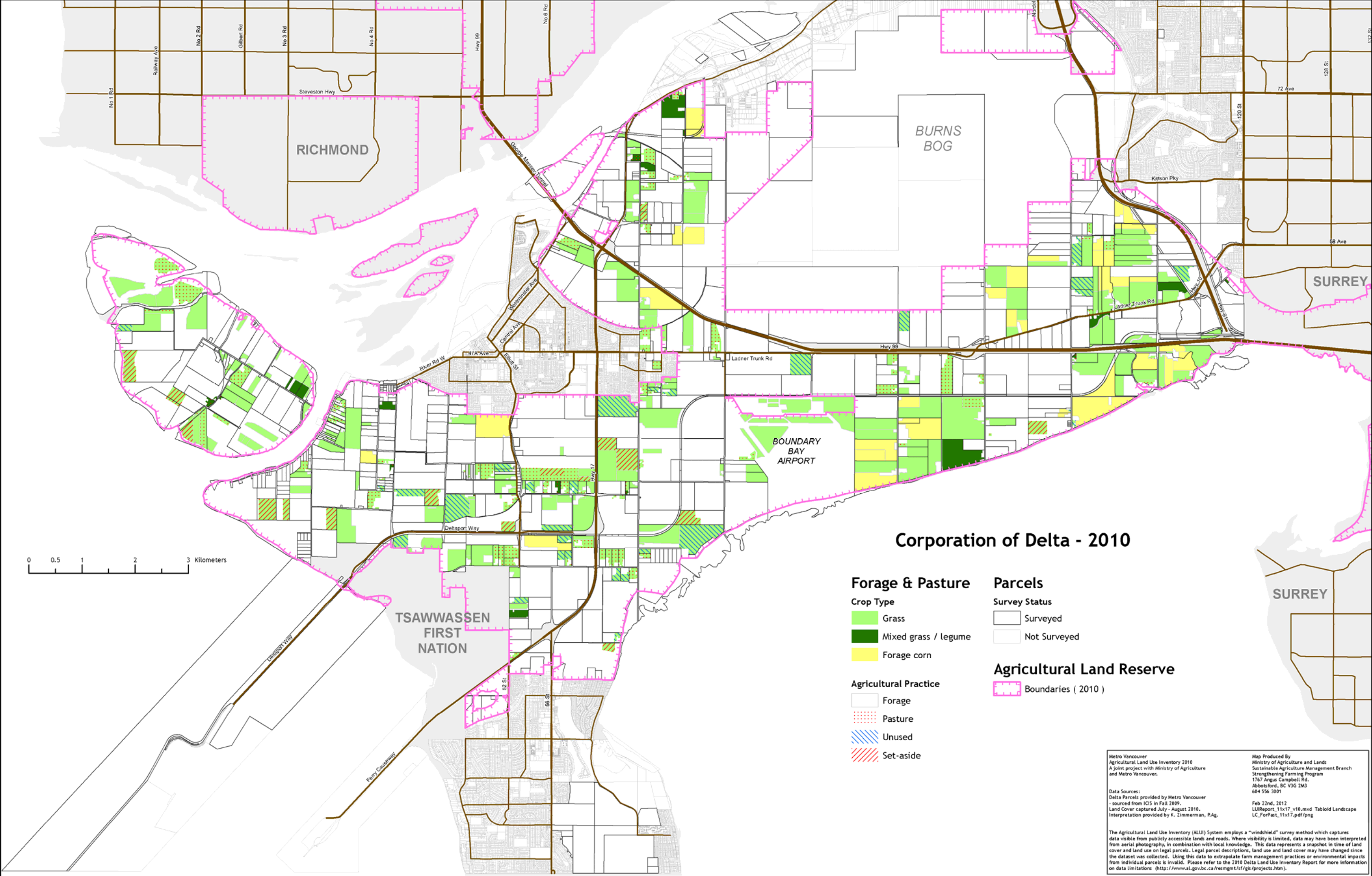
Data Sources:  
Delta Parcels provided by Metro Vancouver  
- sourced from ICIS in Fall 2009.  
Land Cover captured July - August 2010.  
Interpretation provided by K. Zimmerman, P.Ag.

Feb 22nd, 2012  
LUIReport\_11x17\_v10.mxd Tabloid Landscape  
LC\_Vegetables\_11x17.pdf/png

The Agricultural Land Use Inventory (ALUI) System employs a "windshield" survey method which captures data visible from publicly accessible lands and roads. Where visibility is limited, data may have been interpreted from aerial photography, in combination with local knowledge. This data represents a snapshot in time of land cover and land use on legal parcels. Legal parcel descriptions, land use and land cover may have changed since the dataset was collected. Using this data to extrapolate farm management practices or environmental impacts from individual parcels is invalid. Please refer to the 2010 Delta Land Use Inventory Report for more information on data limitations. (<http://www.al.gov.bc.ca/resmgmt/sf/gis/projects.htm>).

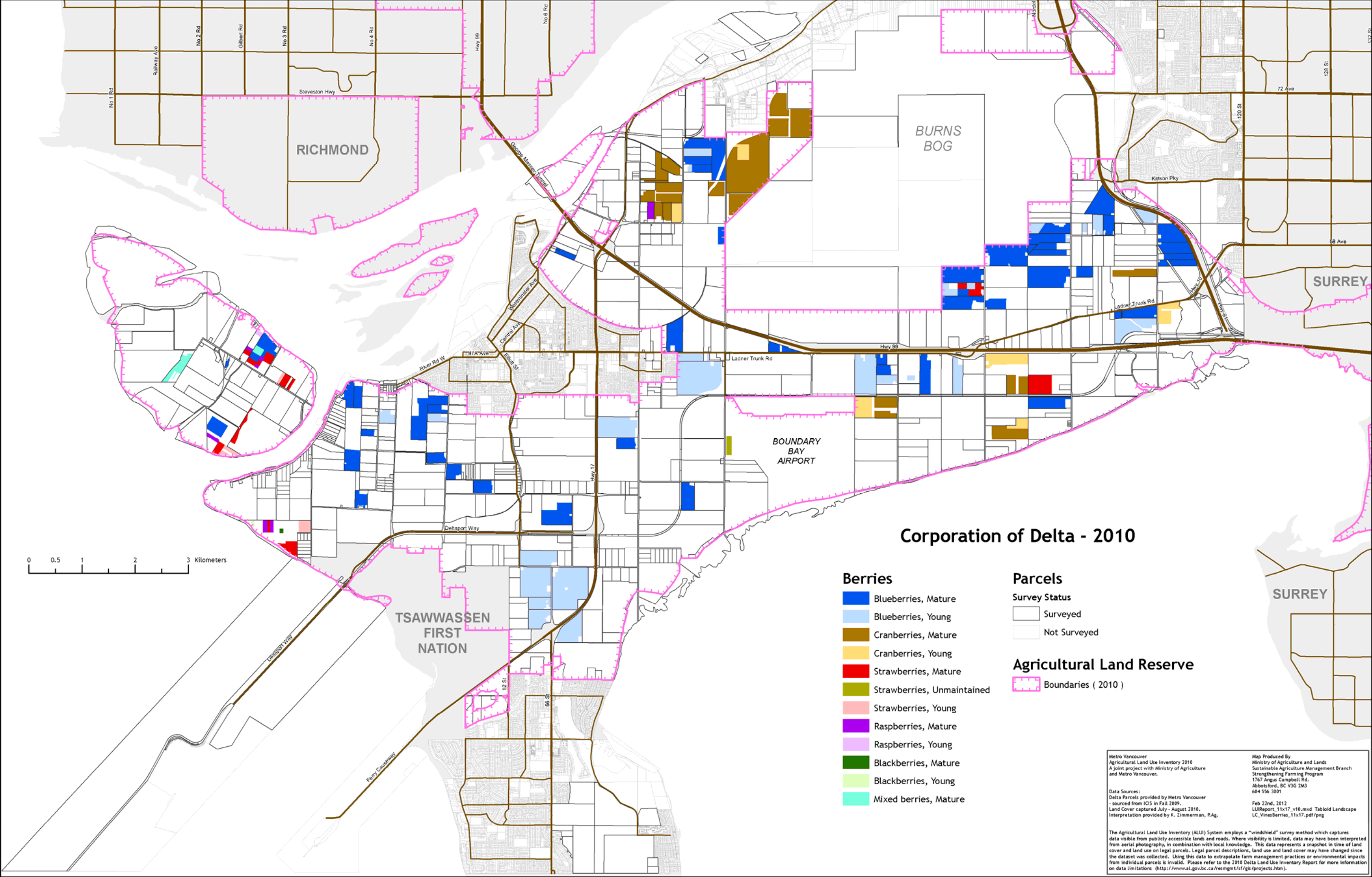


Map B9. Forage and pasture crops





Map B10. Berry crops



Metro Vancouver  
Agricultural Land Use Inventory 2010  
A joint project with Ministry of Agriculture  
and Metro Vancouver.

Map Produced By  
Ministry of Agriculture and Lands  
Sustainable Agriculture Management Branch  
Strengthening Farming Program  
1767 Angus Campbell Rd.  
Abbotsford, BC V3G 2M3  
604 556 3001

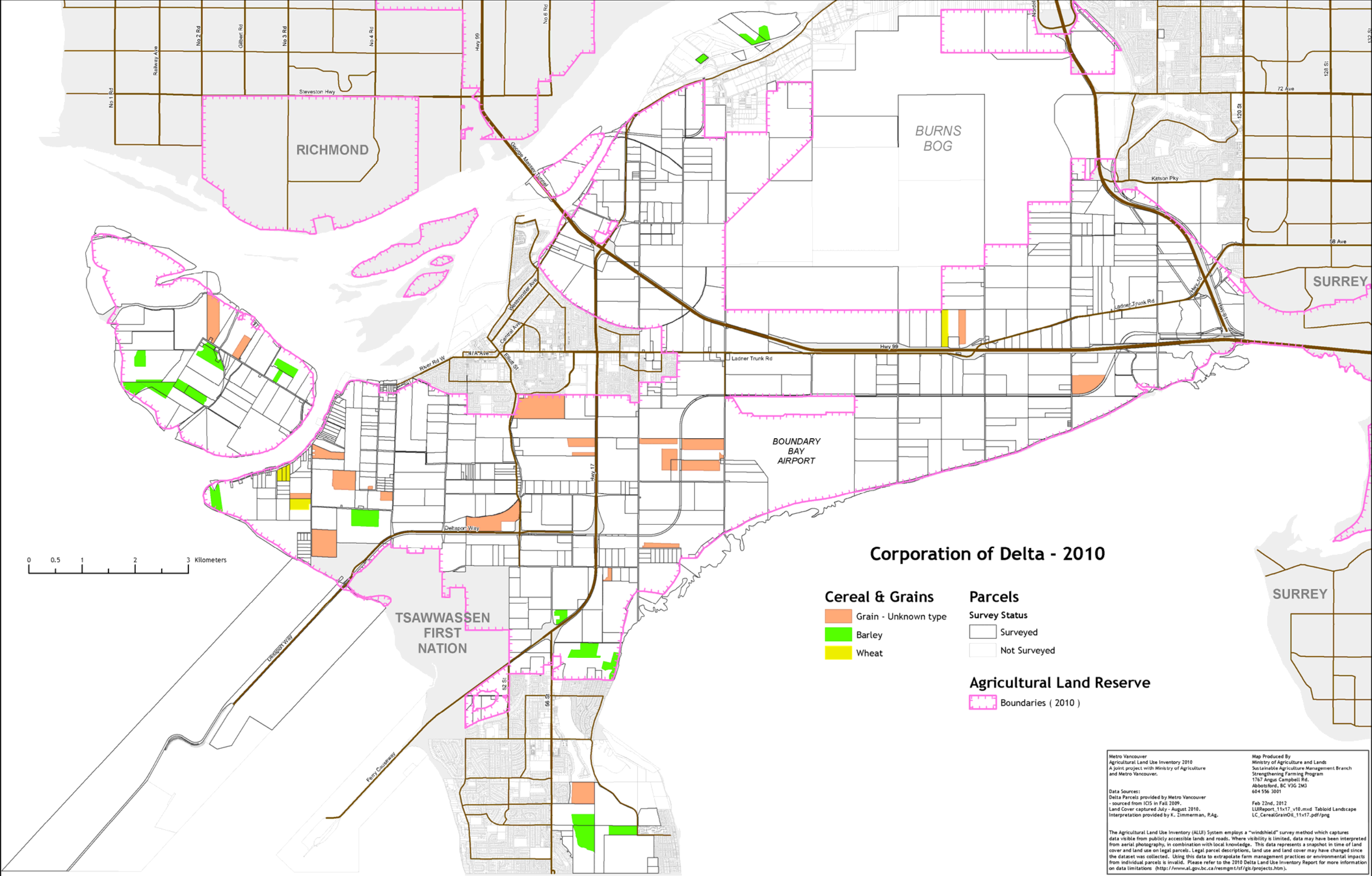
Data Sources:  
Delta Parcels provided by Metro Vancouver  
- sourced from ICIS in Fall 2009.  
Land Cover captured July - August 2010.  
Interpretation provided by K. Zimmerman, P.Ag.

Feb 22nd, 2012  
LUIReport\_11x17\_v10.mxd Tabloid Landscape  
LC\_VinesBerries\_11x17.pdf/png

The Agricultural Land Use Inventory (ALUI) System employs a "windshield" survey method which captures data visible from publicly accessible lands and roads. Where visibility is limited, data may have been interpreted from aerial photography, in combination with local knowledge. This data represents a snapshot in time of land cover and land use on legal parcels. Legal parcel descriptions, land use and land cover may have changed since the dataset was collected. Using this data to extrapolate farm management practices or environmental impacts from individual parcels is invalid. Please refer to the 2010 Delta Land Use Inventory Report for more information on data limitations (<http://www.al.gov.bc.ca/resmgmt/sf/gis/projects.htm>).

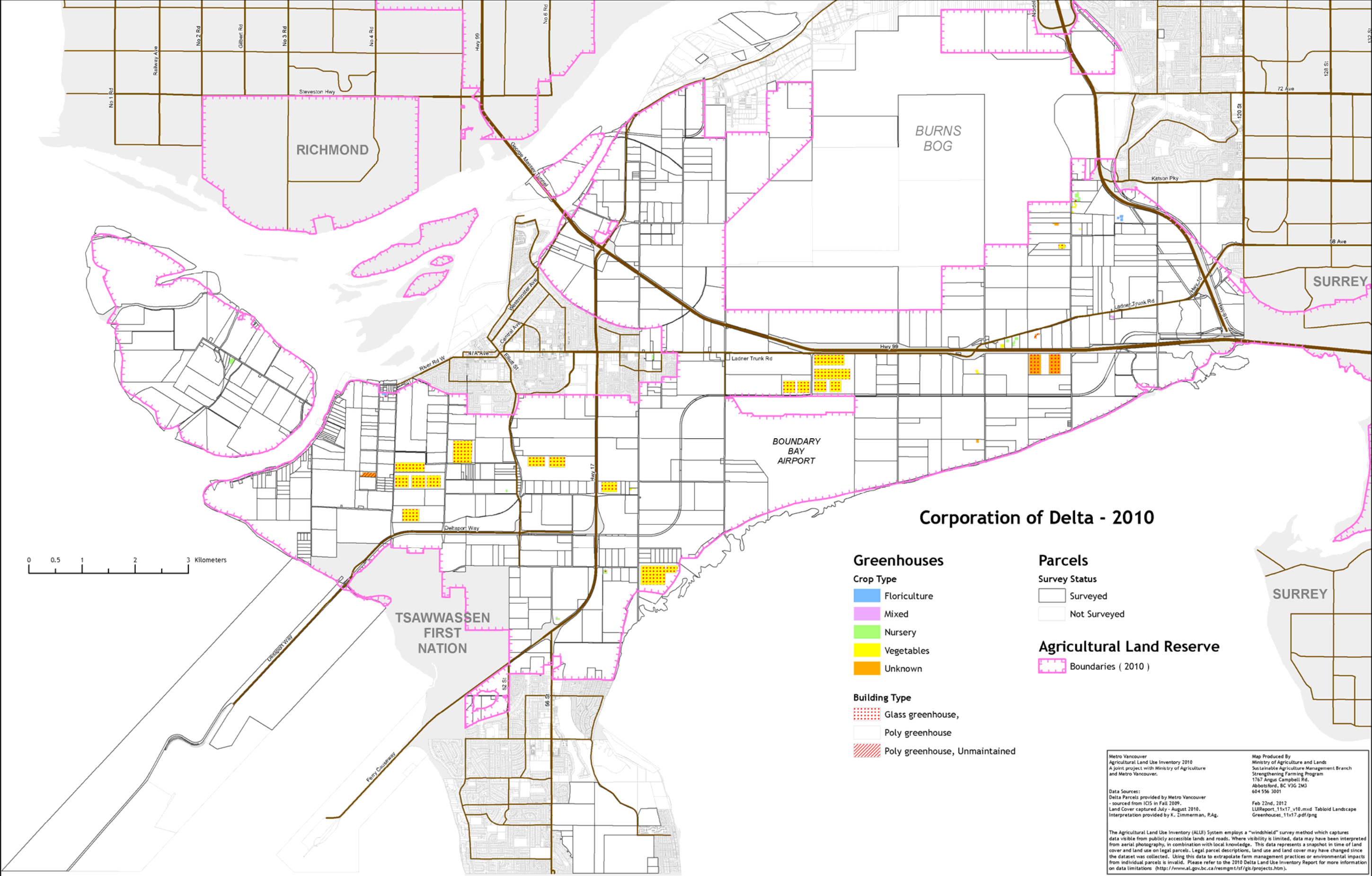


Map B11. Cereal and grain crops



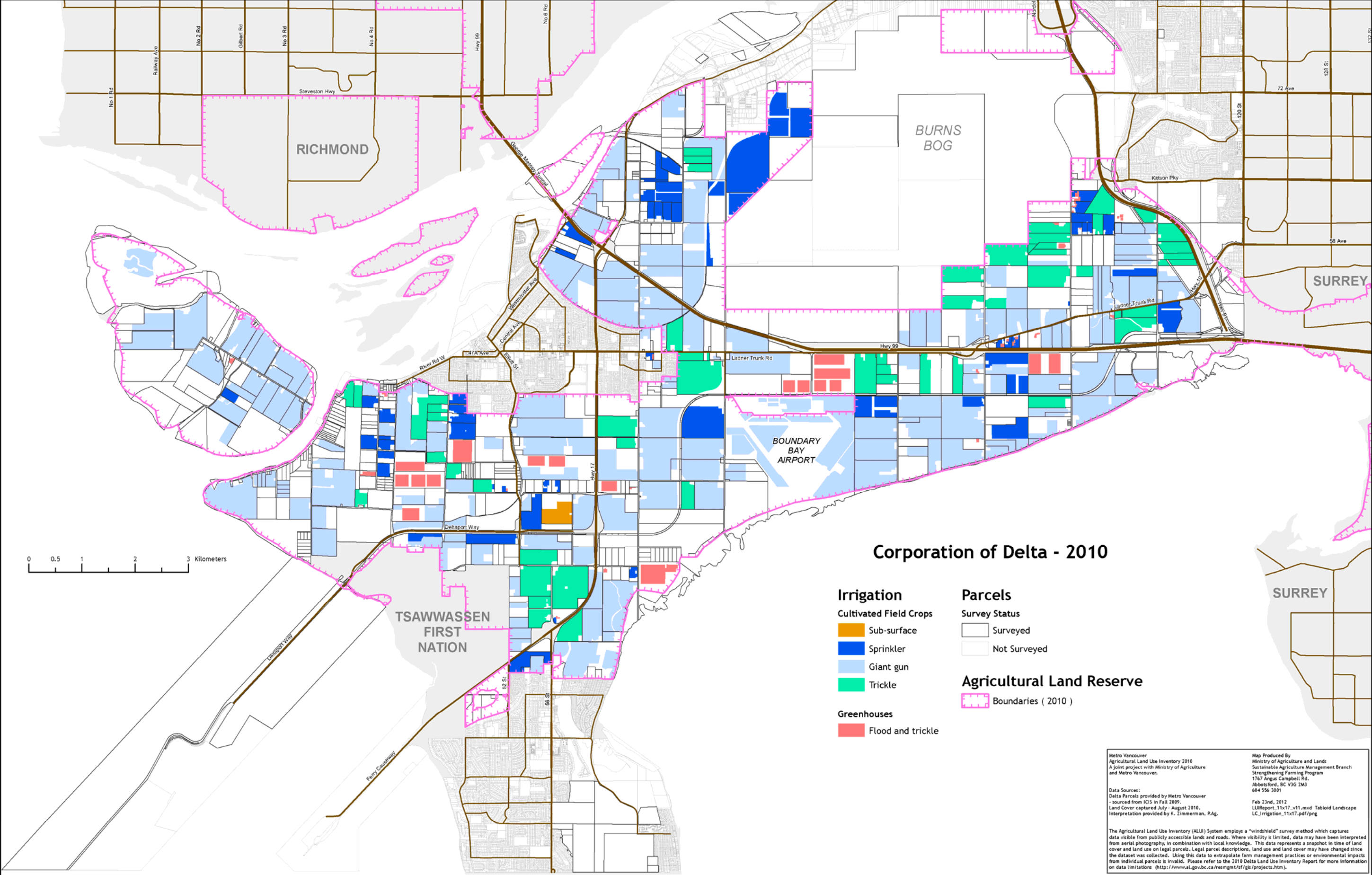


Map B12. Greenhouses



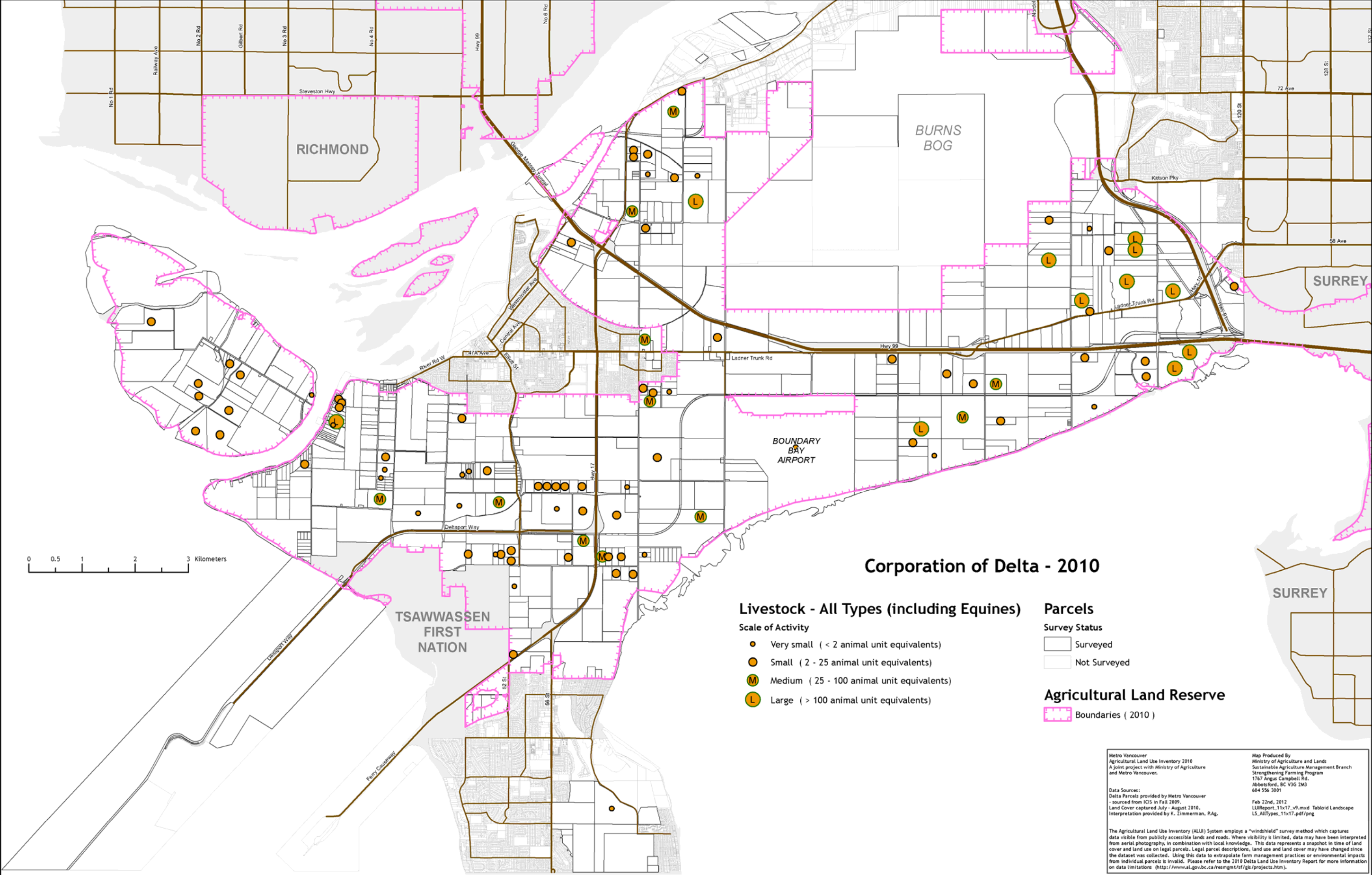


Map B13. Irrigation



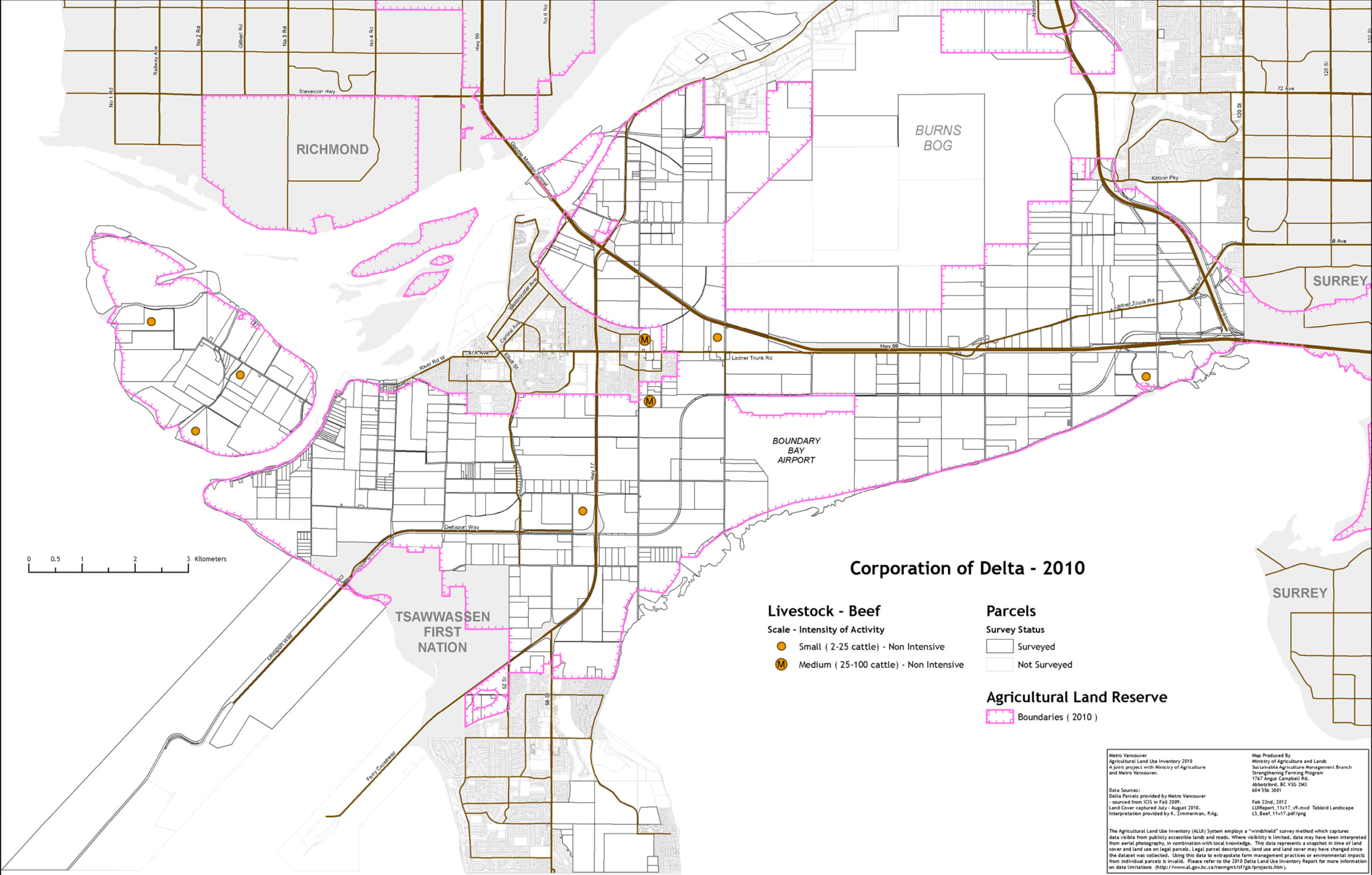


Map B14. Livestock activities – all types

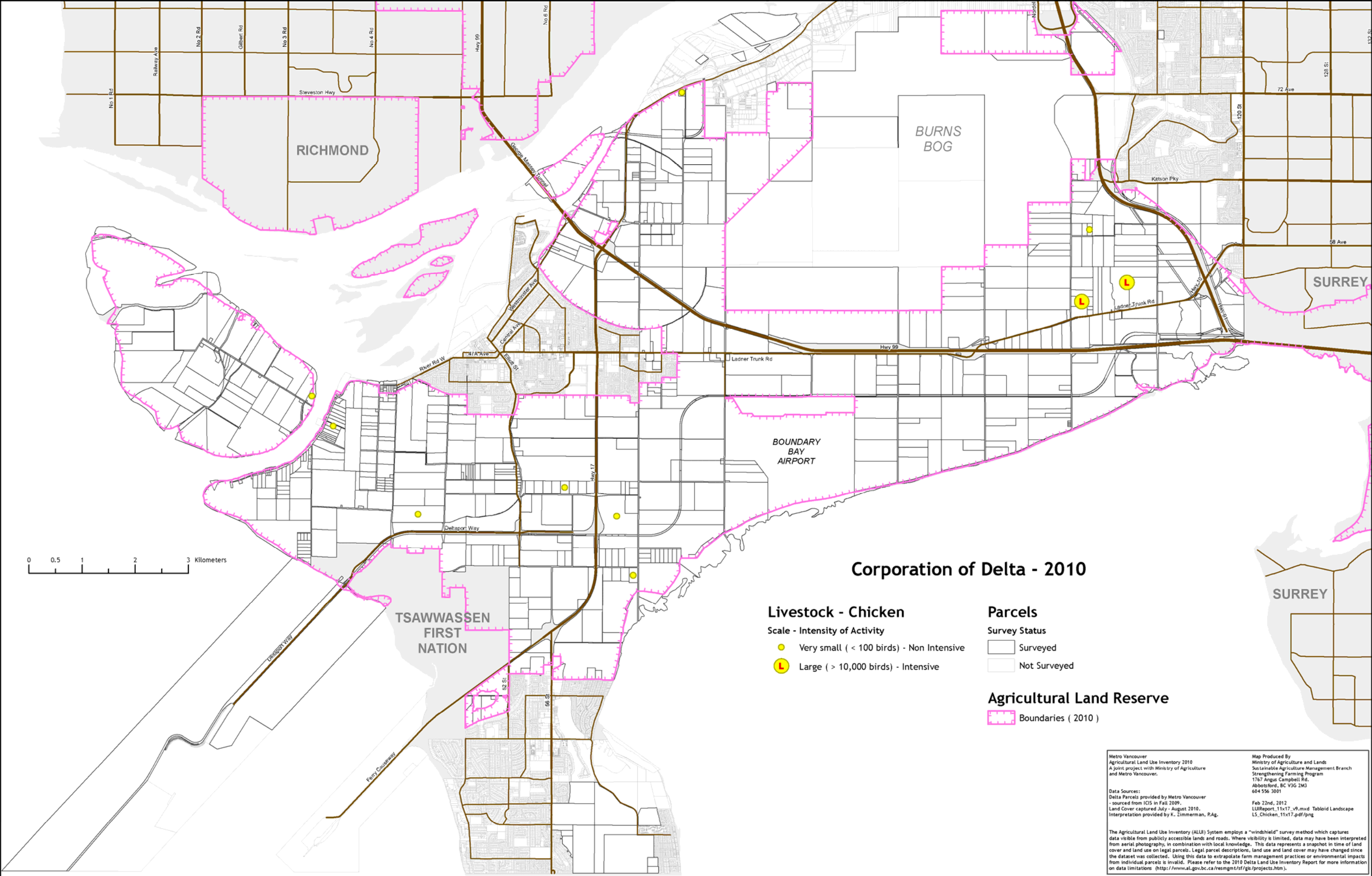




Map B15. Beef activities

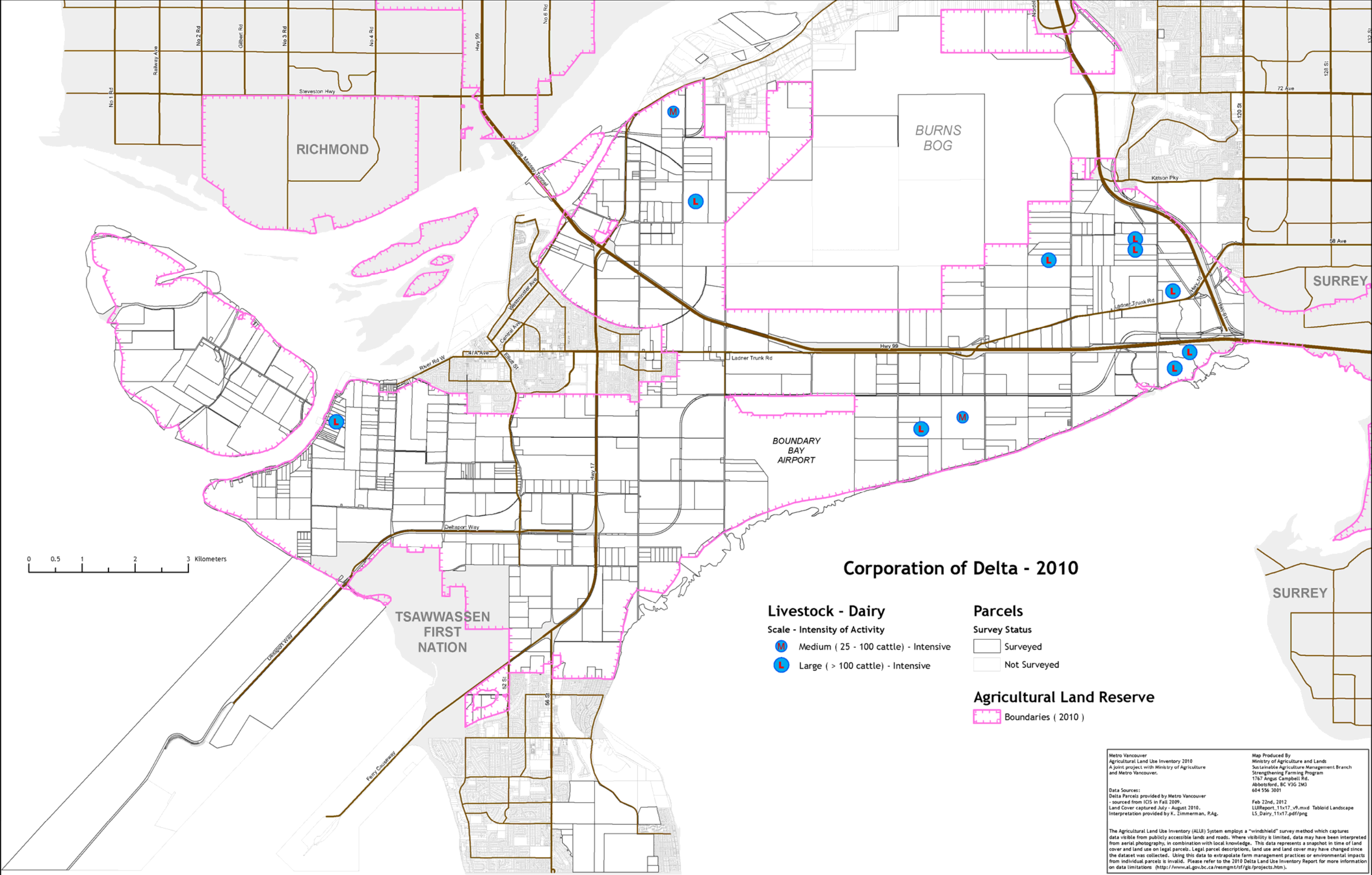


Map B16. Chicken activities

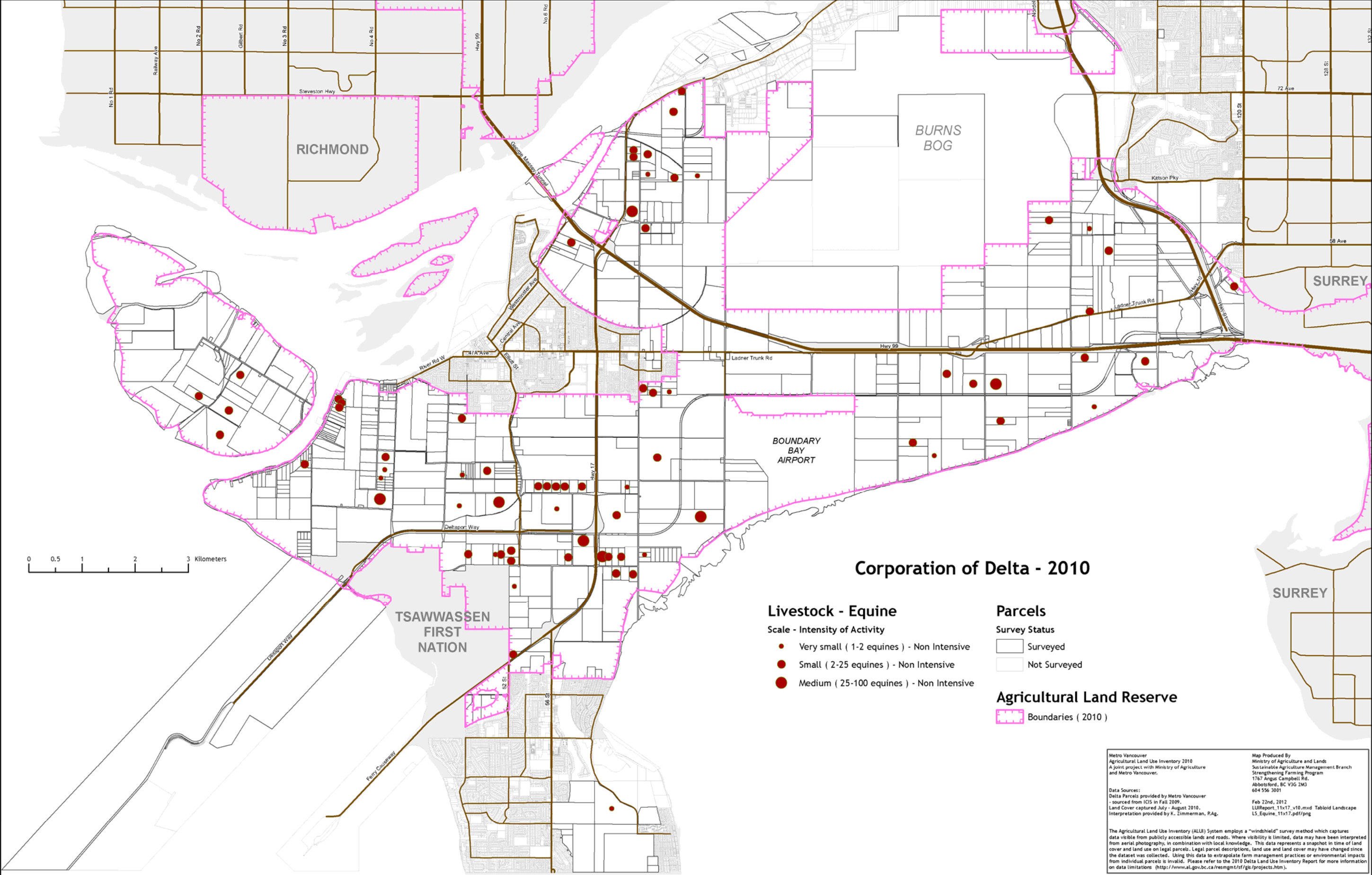




Map B17. Dairy activities



Map B18. Equine activities





Map B19. Parcel size in the ALR

