

Agriculture in Brief

CARIBOO

2016



Jurisdictional Makeup

Includes Regional Districts: Cariboo & Fraser-Fort George

Population (2016) ¹	#	156,494
Jurisdictional Land Area ²	ha	13,128,585
Agricultural Land Reserve (2017) ³	ha	1,327,423
Population Increase (2011-2016) ⁴	#	2,223

Census of Agriculture Data		2016	Share of B.C. 2016
Total Farmland Area ⁵	ha	469,652	18.1%
Number of Farms	#	1,411	8.0%
Average Farm Size	ha	332.9	na
Total Farm Operators	#	2,200	8.3%
Total Farm Capital		\$2,019,491,961	5.4%
Total Gross Farm Receipts		\$106,292,032	2.9%
Total Number of Employees	#	767	1.7%
Farmland Use			
Crops ⁶	ha	66,890	11.5%
Summerfallow	ha	241	4.5%
Tame or Seeded Pasture	ha	33,376	16.2%
Natural Land for Pasture	ha	305,540	21.3%
All Other Land ⁷	ha	63,605	17.4%
Crop Area			
Hay Crop ⁸	ha	61,032	17.5%
Field Crops ⁸	ha	5,433	2.8%
Fruits, Berries & Nuts	ha	32	0.1%
Vegetables	ha	107	1.7%
Nursery Products	ha	x	
Sod Grown for Sale	ha	x	
Greenhouse Flower Area	m ²	14,886	0.8%
Greenhouse Vegetable Area	m ²	6,098	0.2%
Other Greenhouse Production Area	m ²	2,496	0.6%
Mushroom Growing Area	m ²	x	
Christmas Tree Growing Area	ha	287	14.2%
Area Irrigated	ha	16,070	14.1%
Farms Reporting Organic Products for Sale⁹			
Farms Reporting Certified Products	#	17	3.1%
Farms Reporting in Transition Products	#	3	2.7%
Farms With Written Succession Plans⁹			
Family Members as Successors	#	61	5.6%
Non-family Members as Successors	#	3	3.6%

Census of Agriculture Data (continued)		2016		Share of B.C. 2016	
Animals on Farms		Farms	Number	Farms	Number
Hens & Chickens		402	20,377	8.0%	0.1%
Turkeys		58	629	10.9%	0.1%
Total Other Poultry		90	1,102	7.8%	0.2%
Cattle & Calves		779	115,657	15.2%	17.5%
<i>Dairy Cows</i>		37	834	5.4%	1.1%
<i>Beef Cows</i>		672	48,818	19.3%	22.9%
Pigs		131	1,195	14.5%	1.3%
Sheep & Lambs		129	6,547	7.6%	11.0%
Horses & Ponies		670	4,720	14.1%	14.1%
Goats		77	966	7.9%	6.7%
Mink		0	0	0.0%	0.0%
Bison		8	282	14.5%	4.3%
Deer		0	0	0.0%	0.0%
Llamas & Alpacas		52	235	10.0%	9.3%
Rabbits		44	625	11.2%	11.7%
Colonies of Bees for Honey		64	719	6.1%	1.3%

		Farms	Share of B.C. 2016
Farms Selling Direct to Consumers⁹	#	344	6.1%
Farms Reporting Sales of Unprocessed Agricultural Products	#	337	6.1%
Farms Reporting Sales of Value-added Products	#	32	5.4%
Farms Reporting Using Farm Gate, Stands, Kiosks, U-pick	#	300	5.9%
Farms Reporting Using Farmers' Markets	#	75	6.0%
Farms Reporting Using Community Supported Agriculture	#	11	4.4%
Farms Reporting Using Other Methods	#	21	8.6%

Farms Reporting Technologies Used on Farms			
Computers/Laptops for Farm Management	#	700	7.9%
Smartphones/Tablets for Farm Management	#	390	6.5%
Automated Steering (Auto-steer)	#	14	3.0%
GPS Technology	#	104	9.5%
GIS Mapping (e.g., Soil Mapping)	#	28	8.4%
Greenhouse Automation	#	10	3.1%
Robotic Milking	#	0	0.0%
Automated Environmental Controls for Animal Housing	#	3	0.5%
Automated Animal Feeding	#	12	1.8%
Other Technology	#	3	2.1%

Farms Reporting Renewable Energy Systems Produced For Use on Farm on for Sale⁹	#	113	15.7%
Farms Reporting Solar Panels	#	97	15.8%
Farms Reporting Wind Turbines	#	13	26.5%
Farms Reporting Anaerobic Biodigester (Biogas or Methane)	#	0	0.0%
Farms Reporting Biodiesel Production Systems	#	1	50.0%
Farms Reporting Hydro Electric Power Generator	#	10	16.9%
Farms Reporting Other Renewable Energy Producing Systems	#	9	17.0%

Source: Statistics Canada and Adapted from Statistics Canada. Census of Agriculture 2016, unless otherwise specified.
Prepared by Ministry of Agriculture, Corporate Statistics and Research Unit. Summer 2017

End Notes

- 1 Source: Statistics Canada. Census of Population.
- 2 Source: Statistics Canada, Geosuite: <http://www12.statcan.gc.ca/census-recensement/2016/geo/index-eng.cfm>
- 3 Source: Adapted from Agricultural Land Commission. Agricultural Land Reserve as of January 1, 2008 (for 2006) & April 1, 2012 (for 2011) & April 2017 (for 2016).
- 4 Source: Adapted from Statistics Canada. Censuses of Population.
- 5 Total farmland area includes both workable and non-workable land on farm operations in B.C.
- 6 Crops include hay crops, field crops, field vegetables, fruits and nuts, sod and nursery products.
- 7 Other farmland area includes: woodland, wetlands, Christmas tree land, land on which farm buildings, barnyards, lanes, home gardens, greenhouses and mushroom houses are located, and idle land.
- 8 Does not include those crop areas suppressed to meet the confidentiality requirements of the Statistics Act.
- 9 The "number of farms reporting" may not equal the sum of the parts because farms reporting more than one category (or activity) are only counted once.

Notes

Totals may not add up due to rounding

x - indicates farms reporting but information suppressed to meet the confidentiality requirements of the Statistics Act

na - indicates data is not available or applicable

Agriculture in Brief

KOOTENAY

2016



Jurisdictional Makeup

Includes Regional Districts: East Kootenay, Central Kootenay & Kootenay Boundary.

Population (2016) ¹	#	151,403
Jurisdictional Land Area ²	ha	5,772,130
Agricultural Land Reserve (2017) ³	ha	381,551
Population Increase (2011-2016) ⁴	#	5,139

Census of Agriculture Data		2016	Share of B.C. 2016
Total Farmland Area ⁵	ha	127,129	4.9%
Number of Farms	#	1,157	6.6%
Average Farm Size	ha	109.9	na
Total Farm Operators	#	1,730	6.5%
Total Farm Capital		\$1,425,778,256	3.8%
Total Gross Farm Receipts		\$90,878,389	2.4%
Total Number of Employees	#	2,023	4.5%

<u>Farmland Use</u>	ha	127,129	4.9%
Crops ⁶	ha	23,411	4.0%
Summerfallow	ha	91	1.7%
Tame or Seeded Pasture	ha	6,279	3.0%
Natural Land for Pasture	ha	75,029	5.2%
All Other Land ⁷	ha	22,319	6.1%

<u>Crop Area</u>			
Hay Crop ⁸	ha	18,520	5.3%
Field Crops ⁸	ha	2,597	1.3%
Fruits, Berries & Nuts	ha	420	1.7%
Vegetables	ha	192	3.0%
Nursery Products	ha	x	na
Sod Grown for Sale	ha	x	na
Greenhouse Flower Area	m ²	18,579	1.0%
Greenhouse Vegetable Area	m ²	13,912	0.5%
Other Greenhouse Production Area	m ²	5,509	1.3%
Mushroom Growing Area	m ²	105	0.0%
Christmas Tree Growing Area	ha	814	40.4%

<u>Area Irrigated</u>	ha	9,641	8.5%
-----------------------	----	-------	------

<u>Farms Reporting Organic Products for Sale⁹</u>	#	54	9.8%
Farms Reporting Certified Products	#	47	10.5%
Farms Reporting in Transition Products	#	7	6.4%

<u>Farms With Written Succession Plans⁹</u>	#	52	4.4%
Family Members as Successors	#	48	4.4%
Non-family Members as Successors	#	4	4.8%

Census of Agriculture Data (continued)		2016		Share of B.C. 2016	
Animals on Farms		Farms	Number	Farms	Number
Hens & Chickens		343	29,753	6.8%	0.1%
Turkeys		35	435	6.6%	0.1%
Total Other Poultry		81	2,200	7.0%	0.4%
Cattle & Calves		377	30,820	7.4%	4.7%
Dairy Cows		27	1,696	3.9%	2.2%
Beef Cows		279	12,015	8.0%	5.6%
Pigs		78	931	8.6%	1.0%
Sheep & Lambs		115	3,506	6.8%	5.9%
Horses & Ponies		380	2,387	8.0%	7.2%
Goats		68	660	7.0%	4.5%
Mink		1	x	9.1%	na
Bison		2	x	3.6%	na
Deer		0	0	0.0%	0.0%
Llamas & Alpacas		34	150	6.5%	5.9%
Rabbits		31	325	7.9%	6.1%
Colonies of Bees for Honey		100	2,490	9.6%	4.6%

		Farms	Share of B.C. 2016
Farms Selling Direct to Consumers⁹	#	431	7.6%
Farms Reporting Sales of Unprocessed Agricultural Products	#	419	7.6%
Farms Reporting Sales of Value-added Products	#	48	8.1%
Farms Reporting Using Farm Gate, Stands, Kiosks, U-pick	#	372	7.4%
Farms Reporting Using Farmers' Markets	#	140	11.3%
Farms Reporting Using Community Supported Agriculture	#	17	6.8%
Farms Reporting Using Other Methods	#	24	9.9%

Farms Reporting Technologies Used on Farms

Computers/Laptops for Farm Management	#	564	6.4%
Smartphones/Tablets for Farm Management	#	343	5.7%
Automated Steering (Auto-steer)	#	11	2.3%
GPS Technology	#	55	5.0%
GIS Mapping (e.g., Soil Mapping)	#	23	6.9%
Greenhouse Automation	#	15	4.7%
Robotic Milking	#	1	1.4%
Automated Environmental Controls for Animal Housing	#	11	1.9%
Automated Animal Feeding	#	10	1.5%
Other Technology	#	4	2.7%

Farms Reporting Renewable Energy Systems Produced For Use on Farm on for Sale⁹	#	67	9.3%
Farms Reporting Solar Panels	#	58	9.4%
Farms Reporting Wind Turbines	#	2	4.1%
Farms Reporting Anaerobic Biodigester (Biogas or Methane)	#	1	10.0%
Farms Reporting Biodiesel Production Systems	#	0	0.0%
Farms Reporting Hydro Electric Power Generator	#	6	10.2%
Farms Reporting Other Renewable Energy Producing Systems	#	8	15.1%

Source: Statistics Canada and Adapted from Statistics Canada. Census of Agriculture 2016, unless otherwise specified.

Prepared by Ministry of Agriculture, Corporate Statistics and Research Unit. Summer 2017

End Notes

1 Source: Statistics Canada. Census of Population.

2 Source: Statistics Canada, Geosuite: <http://www12.statcan.gc.ca/census-recensement/2016/geo/index-eng.cfm>

3 Source: Adapted from Agricultural Land Commission. Agricultural Land Reserve as of January 1, 2008 (for 2006) & April 1, 2012 (for 2011) & April 2017 (for 2016).

4 Calculated using total farmland area and number of farms.

5 Total farmland area includes both workable and non-workable land on farm operations in B.C.

6 Crops include hay crops, field crops, field vegetables, fruits and nuts, sod and nursery products.

7 Other farmland area includes: woodland, wetlands, Christmas tree land, land on which farm buildings, barnyards, lanes, home gardens, greenhouses and mushroom houses are located, and idle land.

8 Does not include those crop areas suppressed to meet the confidentiality requirements of the Statistics Act.

9 The "number of farms reporting" may not equal the sum of the parts because farms reporting more than one category (or activity) are only counted once.

Notes

Totals may not add up due to rounding

x - indicates farms reporting but information suppressed to meet the confidentiality requirements of the Statistics Act

na - indicates data is not available or applicable



Ministry of
Agriculture

Agriculture in Brief

LOWER MAINLAND - SOUTHWEST

2016



Jurisdictional Makeup

Includes Regional Districts: Fraser Valley, Greater Vancouver, Sunshine Coast & Squamish-Lillooet.

Population (2016) ¹	#	2,832,000
Jurisdictional Land Area ²	ha	3,630,331
Agricultural Land Reserve (2017) ³	ha	161,961
Population Increase (2011-2016) ⁴	#	174,289

Census of Agriculture Data		2016	Share of B.C. 2016
Total Farmland Area ⁵	ha	107,390	4.1%
Number of Farms	#	5,217	29.8%
Average Farm Size	ha	20.6	na
Total Farm Operators	#	7,770	29.4%
Total Farm Capital		\$17,377,705,465	46.3%
Total Gross Farm Receipts		\$2,435,182,604	65.3%
Total Number of Employees	#	22,898	51.4%

Farmland Use	ha	107,389	4.1%
Crops ⁶	ha	64,615	11.1%
Summerfallow	ha	554	10.4%
Tame or Seeded Pasture	ha	4,633	2.3%
Natural Land for Pasture	ha	20,683	1.4%
All Other Land ⁷	ha	16,904	4.6%

Crop Area			
Hay Crop ⁸	ha	23,887	6.9%
Field Crops ⁸	ha	19,475	10.0%
Fruits, Berries & Nuts	ha	13,708	54.0%
Vegetables	ha	4,458	68.8%
Nursery Products	ha	2,446	66.9%
Sod Grown for Sale	ha	520	64.0%
Greenhouse Flower Area	m ²	1,689,006	91.0%
Greenhouse Vegetable Area	m ²	2,874,159	93.6%
Other Greenhouse Production Area	m ²	284,035	67.1%
Mushroom Growing Area	m ²	207,850	98.0%
Christmas Tree Growing Area	ha	342	17.0%

Area Irrigated	ha	27,779	24.4%
-----------------------	----	--------	-------

Farms Reporting Organic Products for Sale⁹	#	145	26.4%
Farms Reporting Certified Products	#	119	26.5%
Farms Reporting in Transition Products	#	31	28.2%

Farms With Written Succession Plans⁹	#	481	40.9%
Family Members as Successors	#	449	41.0%
Non-family Members as Successors	#	35	42.2%

Census of Agriculture Data (continued)	2016		Share of B.C. 2016	
	Farms	Number	Farms	Number
Animals on Farms				
Hens & Chickens	1,456	18,323,543	28.9%	88.9%
Turkeys	119	794,546	22.5%	92.1%
Total Other Poultry	286	547,857	24.9%	97.2%
Cattle & Calves	1,089	127,508	21.2%	19.3%
Dairy Cows	354	55,086	51.5%	72.6%
Beef Cows	392	5,454	11.3%	2.6%
Pigs	140	70,482	15.5%	79.3%
Sheep & Lambs	375	8,328	22.2%	14.1%
Horses & Ponies	863	5,920	18.1%	17.7%
Goats	291	6,068	29.8%	41.8%
Mink	10	x	90.9%	na
Bison	5	18	9.1%	0.3%
Deer	5	69	41.7%	13.3%
Llamas & Alpacas	147	670	28.2%	26.4%
Rabbits	95	1,816	24.2%	34.0%
Colonies of Bees for Honey	310	36,227	29.7%	67.4%

		Farms	Share of B.C. 2016
Farms Selling Direct to Consumers⁹	#	1,481	26.1%
Farms Reporting Sales of Unprocessed Agricultural Products	#	1,452	26.2%
Farms Reporting Sales of Value-added Products	#	114	19.3%
Farms Reporting Using Farm Gate, Stands, Kiosks, U-pick	#	1,311	26.0%
Farms Reporting Using Farmers' Markets	#	266	21.4%
Farms Reporting Using Community Supported Agriculture	#	72	28.9%
Farms Reporting Using Other Methods	#	67	27.6%

Farms Reporting Technologies Used on Farms			
Computers/Laptops for Farm Management	#	2,700	30.6%
Smartphones/Tablets for Farm Management	#	2,003	33.3%
Automated Steering (Auto-steer)	#	199	42.0%
GPS Technology	#	292	26.6%
GIS Mapping (e.g., Soil Mapping)	#	85	25.4%
Greenhouse Automation	#	171	53.8%
Robotic Milking	#	50	69.4%
Automated Environmental Controls for Animal Housing	#	426	72.4%
Automated Animal Feeding	#	449	69.1%
Other Technology	#	48	32.9%

Farms Reporting Renewable Energy Systems Produced For Use on Farm on for Sale⁹	#	72	10.0%
Farms Reporting Solar Panels	#	46	7.5%
Farms Reporting Wind Turbines	#	2	4.1%
Farms Reporting Anaerobic Biodigester (Biogas or Methane)	#	6	60.0%
Farms Reporting Biodiesel Production Systems	#	0	0.0%
Farms Reporting Hydro Electric Power Generator	#	16	27.1%
Farms Reporting Other Renewable Energy Producing Systems	#	7	13.2%

Source: Statistics Canada and Adapted from Statistics Canada. Census of Agriculture 2016, unless otherwise specified.

Prepared by Ministry of Agriculture, Corporate Statistics and Research Unit. Summer 2017

End Notes

1 Source: Statistics Canada. Census of Population.

2 Source: Statistics Canada, Geosuite: <http://www12.statcan.gc.ca/census-recensement/2016/geo/index-eng.cfm>

3 Source: Adapted from Agricultural Land Commission. Agricultural Land Reserve as of January 1, 2008 (for 2006) & April 1, 2012 (for 2011) & April 2017 (for 2016).

4 Source: Adapted from Statistics Canada. Censuses of Population.

5 Total farmland area includes both workable and non-workable land on farm operations in B.C.

6 Crops include hay crops, field crops, field vegetables, fruits and nuts, sod and nursery products.

7 Other farmland area includes: woodland, wetlands, Christmas tree land, land on which farm buildings, barnyards, lanes, home gardens, greenhouses and mushroom houses are located, and idle land.

8 Does not include those crop areas suppressed to meet the confidentiality requirements of the Statistics Act.

9 The "number of farms reporting" may not equal the sum of the parts because farms reporting more than one category (or activity) are only counted once.

Notes

Totals may not add up due to rounding

x - indicates farms reporting but information suppressed to meet the confidentiality requirements of the Statistics Act

na - indicates data is not available or applicable



Ministry of
Agriculture

Agriculture in Brief

NECHAKO

2016



Jurisdictional Makeup

Includes Regional Districts: Bulkley-Nechako & Stikine.

Population (2016) ¹	#	38,636
Jurisdictional Land Area ²	ha	19,202,453
Agricultural Land Reserve (2017) ³	ha	373,544
Population Increase (2011-2016) ⁴	#	-1,201

Census of Agriculture Data		2016	Share of B.C. 2016
Total Farmland Area ⁵	ha	245,379	9.5%
Number of Farms	#	747	4.3%
Average Farm Size	ha	328.5	na
Total Farm Operators	#	1,165	4.4%
Total Farm Capital		\$1,048,056,984	2.8%
Total Gross Farm Receipts		\$63,186,797	1.7%
Total Number of Employees	#	470	1.1%

<u>Farmland Use</u>	ha	245,379	9.5%
Crops ⁶	ha	55,265	9.5%
Summerfallow	ha	155	2.9%
Tame or Seeded Pasture	ha	28,962	14.1%
Natural Land for Pasture	ha	121,050	8.4%
All Other Land ⁷	ha	39,947	10.9%

Crop Area

Hay Crop ⁸	ha	45,981	13.2%
Field Crops ⁸	ha	8,943	4.6%
Fruits, Berries & Nuts	ha	11	0.0%
Vegetables	ha	20	0.3%
Nursery Products	ha	2	0.1%
Sod Grown for Sale	ha	0	0.0%
Greenhouse Flower Area	m ²	6,009	0.3%
Greenhouse Vegetable Area	m ²	1,208	0.0%
Other Greenhouse Production Area	m ²	452	0.1%
Mushroom Growing Area	m ²	x	na
Christmas Tree Growing Area	ha	x	na

<u>Area Irrigated</u>	ha	3,131	2.7%
-----------------------	----	-------	------

<u>Farms Reporting Organic Products for Sale⁹</u>	#	2	0.4%
Farms Reporting Certified Products	#	2	0.4%
Farms Reporting in Transition Products	#	0	0.0%

<u>Farms With Written Succession Plans⁹</u>	#	32	2.7%
Family Members as Successors	#	30	2.7%
Non-family Members as Successors	#	2	2.4%

Census of Agriculture Data (continued)		2016		Share of B.C. 2016	
Animals on Farms		Farms	Number	Farms	Number
Hens & Chickens		200	9,820	4.0%	0.0%
Turkeys		29	305	5.5%	0.0%
Total Other Poultry		49	429	4.3%	0.1%
Cattle & Calves		442	56,113	8.6%	8.5%
<i>Dairy Cows</i>		41	1,266	6.0%	1.7%
<i>Beef Cows</i>		376	23,428	10.8%	11.0%
Pigs		81	977	9.0%	1.1%
Sheep & Lambs		93	3,488	5.5%	5.9%
Horses & Ponies		352	2,346	7.4%	7.0%
Goats		42	1,142	4.3%	7.9%
Mink		0	0	0.0%	0.0%
Bison		2	x	3.6%	
Deer		0	0	0.0%	0.0%
Llamas & Alpacas		24	66	4.6%	2.6%
Rabbits		38	313	9.7%	5.9%
Colonies of Bees for Honey		26	474	2.5%	0.9%

		Farms	Share of B.C. 2016
Farms Selling Direct to Consumers⁹	#	164	2.9%
Farms Reporting Sales of Unprocessed Agricultural Products	#	160	2.9%
Farms Reporting Sales of Value-added Products	#	18	3.0%
Farms Reporting Using Farm Gate, Stands, Kiosks, U-pick	#	147	2.9%
Farms Reporting Using Farmers' Markets	#	26	2.1%
Farms Reporting Using Community Supported Agriculture	#	5	2.0%
Farms Reporting Using Other Methods	#	13	5.3%

Farms Reporting Technologies Used on Farms

Computers/Laptops for Farm Management	#	369	4.2%
Smartphones/Tablets for Farm Management	#	246	4.1%
Automated Steering (Auto-steer)	#	14	3.0%
GPS Technology	#	102	9.3%
GIS Mapping (e.g., Soil Mapping)	#	13	3.9%
Greenhouse Automation	#	2	0.6%
Robotic Milking	#	0	0.0%
Automated Environmental Controls for Animal Housing	#	5	0.9%
Automated Animal Feeding	#	7	1.1%
Other Technology	#	1	0.7%

Farms Reporting Renewable Energy Systems Produced For Use on Farm on for Sale⁹	#	46	6.4%
Farms Reporting Solar Panels	#	34	5.5%
Farms Reporting Wind Turbines	#	2	4.1%
Farms Reporting Anaerobic Biodigester (Biogas or Methane)	#	0	0.0%
Farms Reporting Biodiesel Production Systems	#	0	0.0%
Farms Reporting Hydro Electric Power Generator	#	6	10.2%
Farms Reporting Other Renewable Energy Producing Systems	#	6	11.3%

Source: Statistics Canada and Adapted from Statistics Canada. Census of Agriculture, 2016, unless otherwise specified.
Prepared by Ministry of Agriculture, Corporate Statistics and Research Unit. Summer 2017

End Notes

- 1 Source: Statistics Canada. Census of Population.
- 2 Source: Statistics Canada, Geosuite: <http://www12.statcan.gc.ca/census-recensement/2016/geo/index-eng.cfm>
- 3 Source: Adapted from Agricultural Land Commission. Agricultural Land Reserve as of January 1, 2008 (for 2006) & April 1, 2012 (for 2011) & April 2017 (for 2016).
- 4 Source: Adapted from Statistics Canada. Censuses of Population.
- 5 Total farmland area includes both workable and non-workable land on farm operations in B.C.
- 6 Crops include hay crops, field crops, field vegetables, fruits and nuts, sod and nursery products.
- 7 Other farmland area includes: woodland, wetlands, Christmas tree land, land on which farm buildings, barnyards, lanes, home gardens, greenhouses and mushroom houses are located, and idle land.
- 8 Does not include those crop areas suppressed to meet the confidentiality requirements of the Statistics Act.
- 9 The "number of farms reporting" may not equal the sum of the parts because farms reporting more than one category (or activity) are only counted once.

Notes

Totals may not add up due to rounding

x - indicates farms reporting but information suppressed to meet the confidentiality requirements of the Statistics Act

na - indicates data is not available or applicable

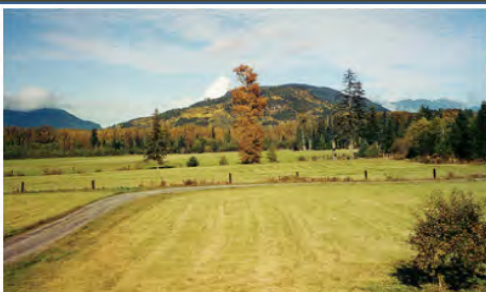


Ministry of
Agriculture

Agriculture in Brief

NORTH COAST

2016



Jurisdictional Makeup

Includes Regional Districts: Skeena-Queen Charlotte & Kitimat-Stikine.

Population (2016) ¹	#	55,500
Jurisdictional Land Area ²	ha	12,424,002
Agricultural Land Reserve (2017) ³	ha	109,187
Population Increase (2011-2016) ⁴	#	-645

Census of Agriculture Data		2016	Share of B.C. 2016
Total Farmland Area ⁵	ha	9,052	0.3%
Number of Farms	#	116	0.7%
Average Farm Size	ha	78.0	na
Total Farm Operators	#	175	0.7%
Total Farm Capital		\$86,714,054	0.2%
Total Gross Farm Receipts		\$5,110,778	0.1%
Total Number of Employees	#	49	0.1%

<u>Farmland Use</u>	ha	9,053	0.3%
Crops ⁶	ha	1,675	0.3%
Summerfallow	ha	9	0.2%
Tame or Seeded Pasture	ha	1,135	0.6%
Natural Land for Pasture	ha	2,745	0.2%
All Other Land ⁷	ha	3,489	1.0%

<u>Crop Area</u>			
Hay Crop ⁸	ha	1,504	0.4%
Field Crops ⁸	ha	101	0.1%
Fruits, Berries & Nuts	ha	23	0.1%
Vegetables	ha	x	na
Nursery Products	ha	x	na
Sod Grown for Sale	ha	0	0.0%
Greenhouse Flower Area	m ²	651	0.0%
Greenhouse Vegetable Area	m ²	2,147	0.1%
Other Greenhouse Production Area	m ²	260	0.1%
Mushroom Growing Area	m ²	0	0.0%
Christmas Tree Growing Area	ha	x	na

<u>Area Irrigated</u>	ha	19	0.0%
-----------------------	----	----	------

<u>Farms Reporting Organic Products for Sale⁹</u>	#	3	0.5%
Farms Reporting Certified Products	#	2	0.4%
Farms Reporting in Transition Products	#	1	0.9%

<u>Farms With Written Succession Plans⁹</u>	#	3	0.3%
Family Members as Successors	#	3	0.3%
Non-family Members as Successors	#	0	0.0%

Census of Agriculture Data (continued)		2016		Share of B.C. 2016	
Animals on Farms		Farms	Number	Farms	Number
Hens & Chickens		57	x	1.1%	na
Turkeys		11	182	2.1%	0.0%
Total Other Poultry		14	175	1.2%	0.0%
Cattle & Calves		36	1,202	0.7%	0.2%
Dairy Cows		5	5	0.7%	0.0%
Beef Cows		30	514	0.9%	0.2%
Pigs		7	37	0.8%	0.0%
Sheep & Lambs		18	x	1.1%	na
Horses & Ponies		39	168	0.8%	0.5%
Goats		13	115	1.3%	0.8%
Mink		0	0	0.0%	0.0%
Bison		0	0	0.0%	0.0%
Deer		0	0	0.0%	0.0%
Llamas & Alpacas		5	9	1.0%	0.4%
Rabbits		8	75	2.0%	1.4%
Colonies of Bees for Honey		6	59	0.6%	0.1%

		Farms	Share of B.C. 2016
Farms Selling Direct to Consumers⁹	#	56	1.0%
Farms Reporting Sales of Unprocessed Agricultural Products	#	56	1.0%
Farms Reporting Sales of Value-added Products	#	8	1.4%
Farms Reporting Using Farm Gate, Stands, Kiosks, U-pick	#	44	0.9%
Farms Reporting Using Farmers' Markets	#	20	1.6%
Farms Reporting Using Community Supported Agriculture	#	3	1.2%
Farms Reporting Using Other Methods	#	4	1.6%

Farms Reporting Technologies Used on Farms

Computers/Laptops for Farm Management	#	52	0.6%
Smartphones/Tablets for Farm Management	#	31	0.5%
Automated Steering (Auto-steer)	#	0	0.0%
GPS Technology	#	6	0.5%
GIS Mapping (e.g., Soil Mapping)	#	1	0.3%
Greenhouse Automation	#	1	0.3%
Robotic Milking	#	0	0.0%
Automated Environmental Controls for Animal Housing	#	2	0.3%
Automated Animal Feeding	#	2	0.3%
Other Technology	#	1	0.7%

Farms Reporting Renewable Energy Systems Produced For Use on Farm on for Sale⁹	#	12	1.7%
Farms Reporting Solar Panels	#	11	1.8%
Farms Reporting Wind Turbines	#	0	0.0%
Farms Reporting Anaerobic Biodigester (Biogas or Methane)	#	0	0.0%
Farms Reporting Biodiesel Production Systems	#	0	0.0%
Farms Reporting Hydro Electric Power Generator	#	2	3.4%
Farms Reporting Other Renewable Energy Producing Systems	#	0	0.0%

Source: Statistics Canada and Adapted from Statistics Canada. Census of Agriculture 2016, unless otherwise specified.
Prepared by Ministry of Agriculture, Corporate Statistics and Research Unit. Summer 2017

End Notes

- 1 Source: Statistics Canada. Census of Population.
- 2 Source: Statistics Canada, Geosuite: <http://www12.statcan.gc.ca/census-recensement/2016/geo/index-eng.cfm>
- 3 Source: Adapted from Agricultural Land Commission. Agricultural Land Reserve as of January 1, 2008 (for 2006) & April 1, 2012 (for 2011) & April 2017 (for 2016).
- 4 Source: Adapted from Statistics Canada. Censuses of Population.
- 5 Total farmland area includes both workable and non-workable land on farm operations in B.C.
- 6 Crops include hay crops, field crops, field vegetables, fruits and nuts, sod and nursery products.
- 7 Other farmland area includes: woodland, wetlands, Christmas tree land, land on which farm buildings, barnyards, lanes, home gardens, greenhouses and mushroom houses are located, and idle land.
- 8 Does not include those crop areas suppressed to meet the confidentiality requirements of the Statistics Act.
- 9 The "number of farms reporting" may not equal the sum of the parts because farms reporting more than one category (or activity) are only counted once.

Notes

Totals may not add up due to rounding

x - indicates farms reporting but information suppressed to meet the confidentiality requirements of the Statistics Act

na - indicates data is not available or applicable

Agriculture in Brief

PEACE RIVER

2016



Jurisdictional Makeup

Includes Regional Districts: Peace River & Northern Rockies.

Population (2016) ¹	#	68,335
Jurisdictional Land Area ²	ha	20,249,862
Agricultural Land Reserve (2017) ³	ha	1,333,209
Population Increase (2011-2016) ⁴	#	2,675

Census of Agriculture Data		2016	Share of B.C. 2016
Total Farmland Area ⁵	ha	804,052	31.0%
Number of Farms	#	1,335	7.6%
Average Farm Size	ha	602.3	na
Total Farm Operators	#	2,025	7.7%
Total Farm Capital		\$2,586,631,435	6.9%
Total Gross Farm Receipts		\$195,514,410	5.2%
Total Number of Employees	#	582	1.3%

<u>Farmland Use</u>	ha	804,052	31.0%
Crops ⁶	ha	275,312	47.4%
Summerfallow	ha	3,737	70.0%
Tame or Seeded Pasture	ha	99,301	48.2%
Natural Land for Pasture	ha	326,392	22.8%
All Other Land ⁷	ha	99,310	27.2%

<u>Crop Area</u>			
Hay Crop ⁸	ha	131,212	37.6%
Field Crops ⁸	ha	143,473	73.3%
Fruits, Berries & Nuts	ha	40	0.2%
Vegetables	ha	x	na
Nursery Products	ha	x	na
Sod Grown for Sale	ha	x	na
Greenhouse Flower Area	m ²	5,586	0.3%
Greenhouse Vegetable Area	m ²	836	0.0%
Other Greenhouse Production Area	m ²	1,601	0.4%
Mushroom Growing Area	m ²	0	0.0%
Christmas Tree Growing Area	ha	12	0.6%

<u>Area Irrigated</u>	ha	29	0.0%
-----------------------	----	----	------

<u>Farms Reporting Organic Products for Sale⁹</u>	#	18	3.3%
Farms Reporting Certified Products	#	15	3.3%
Farms Reporting in Transition Products	#	4	3.6%

<u>Farms With Written Succession Plans⁹</u>	#	75	6.4%
Family Members as Successors	#	73	6.7%
Non-family Members as Successors	#	2	2.4%

Census of Agriculture Data (continued)		2016		Share of B.C. 2016	
Animals on Farms		Farms	Number	Farms	Number
Hens & Chickens		196	x	3.9%	na
Turkeys		35	3,642	6.6%	0.4%
Total Other Poultry		54	3,183	4.7%	0.6%
Cattle & Calves		596	112,523	11.6%	17.1%
<i>Dairy Cows</i>		26	262	3.8%	0.3%
<i>Beef Cows</i>		529	50,928	15.2%	23.9%
Pigs		65	10,319	7.2%	11.6%
Sheep & Lambs		100	x	5.9%	na
Horses & Ponies		642	6,146	13.5%	18.4%
Goats		64	955	6.6%	6.6%
Mink		0	0	0.0%	0.0%
Bison		24	x	43.6%	na
Deer		1	x	8.3%	na
Llamas & Alpacas		56	207	10.7%	8.2%
Rabbits		35	317	8.9%	5.9%
Colonies of Bees for Honey		43	2,765	4.1%	5.1%

		Farms	Share of B.C. 2016
Farms Selling Direct to Consumers⁹	#	113	2.0%
Farms Reporting Sales of Unprocessed Agricultural Products	#	110	2.0%
Farms Reporting Sales of Value-added Products	#	12	2.0%
Farms Reporting Using Farm Gate, Stands, Kiosks, U-pick	#	98	1.9%
Farms Reporting Using Farmers' Markets	#	17	1.4%
Farms Reporting Using Community Supported Agriculture	#	5	2.0%
Farms Reporting Using Other Methods	#	5	2.1%

Farms Reporting Technologies Used on Farms

Computers/Laptops for Farm Management	#	604	6.8%
Smartphones/Tablets for Farm Management	#	471	7.8%
Automated Steering (Auto-steer)	#	133	28.1%
GPS Technology	#	230	21.0%
GIS Mapping (e.g., Soil Mapping)	#	26	7.8%
Greenhouse Automation	#	5	1.6%
Robotic Milking	#	0	0.0%
Automated Environmental Controls for Animal Housing	#	4	0.7%
Automated Animal Feeding	#	11	1.7%
Other Technology	#	4	2.7%

Farms Reporting Renewable Energy Systems Produced For Use on Farm on for Sale⁹	#	97	13.5%
Farms Reporting Solar Panels	#	92	15.0%
Farms Reporting Wind Turbines	#	9	18.4%
Farms Reporting Anaerobic Biodigester (Biogas or Methane)	#	0	0.0%
Farms Reporting Biodiesel Production Systems	#	1	50.0%
Farms Reporting Hydro Electric Power Generator	#	2	3.4%
Farms Reporting Other Renewable Energy Producing Systems	#	1	1.9%

Source: Statistics Canada and Adapted from Statistics Canada. Census of Agriculture, 2016, unless otherwise specified.
Prepared by Ministry of Agriculture, Corporate Statistics and Research Unit. Summer 2017

End Notes

- 1 Source: Statistics Canada. Census of Population.
- 2 Source: Statistics Canada, Geosuite: <http://www12.statcan.gc.ca/census-recensement/2016/geo/index-eng.cfm>
- 3 Source: Adapted from Agricultural Land Commission. Agricultural Land Reserve as of January 1, 2008 (for 2006) & April 1, 2012 (for 2011) & April 2017 (for 2016).
- 4 Source: Adapted from Statistics Canada. Censuses of Population.
- 5 Total farmland area includes both workable and non-workable land on farm operations in B.C.
- 6 Crops include hay crops, field crops, field vegetables, fruits and nuts, sod and nursery products.
- 7 Other farmland area includes: woodland, wetlands, Christmas tree land, land on which farm buildings, barnyards, lanes, home gardens, greenhouses and mushroom houses are located, and idle land.
- 8 Does not include those crop areas suppressed to meet the confidentiality requirements of the Statistics Act.
- 9 The "number of farms reporting" may not equal the sum of the parts because farms reporting more than one category (or activity) are only counted once.

Notes

Totals may not add up due to rounding

x - indicates farms reporting but information suppressed to meet the confidentiality requirements of the Statistics Act

na - indicates data is not available or applicable



Ministry of
Agriculture

Agriculture in Brief

THOMPSON - OKANAGAN

2016



Jurisdictional Makeup

Includes Regional Districts: Okanagan-Similkameen, Thompson-Nicola, Central Okanagan, North Okanagan & Columbia-Shuswap.

Population (2016) ¹	#	546,287
Jurisdictional Land Area ²	ha	9,419,776
Agricultural Land Reserve (2017) ³	ha	808,838
Population Increase (2011-2016) ⁴	#	25,484

Census of Agriculture Data		2016	Share of B.C. 2016
Total Farmland Area ⁵	ha	775,726	29.9%
Number of Farms	#	4,759	27.2%
Average Farm Size	ha	163.0	na
Total Farm Operators	#	7,145	27.0%
Total Farm Capital		\$9,440,787,576	25.2%
Total Gross Farm Receipts		\$632,676,099	17.0%
Total Number of Employees	#	14,254	32.0%
Farmland Use	ha	775,725	29.9%
Crops ⁶	ha	75,161	12.9%
Summerfallow	ha	376	7.0%
Tame or Seeded Pasture	ha	27,928	13.6%
Natural Land for Pasture	ha	573,028	40.0%
All Other Land ⁷	ha	99,232	27.2%

Crop Area

Hay Crop ⁸	ha	53,207	15.3%
Field Crops ⁸	ha	10,098	5.2%
Fruits, Berries & Nuts	ha	10,060	39.7%
Vegetables	ha	889	13.7%
Nursery Products	ha	x	na
Sod Grown for Sale	ha	x	na
Greenhouse Flower Area	m ²	36,608	2.0%
Greenhouse Vegetable Area	m ²	75,115	2.4%
Other Greenhouse Production Area	m ²	52,022	12.3%
Mushroom Growing Area	m ²	45	0.0%
Christmas Tree Growing Area	ha	198	9.8%

Area Irrigated	ha	51,187	44.9%
----------------	----	--------	-------

Farms Reporting Organic Products for Sale ⁹	#	222	40.4%
Farms Reporting Certified Products	#	190	42.3%
Farms Reporting in Transition Products	#	34	30.9%

Farms With Written Succession Plans ⁹	#	353	30.0%
Family Members as Successors	#	326	29.7%
Non-family Members as Successors	#	28	33.7%

Census of Agriculture Data (continued)		2016		Share of B.C. 2016	
Animals on Farms		Farms	Number	Farms	Number
Hens & Chickens		1,091	1,578,283	21.7%	7.7%
Turkeys		118	39,466	22.3%	4.6%
Total Other Poultry		208	2,844	18.1%	0.5%
Cattle & Calves		1,278	192,851	24.9%	29.2%
Dairy Cows		114	10,928	16.6%	14.4%
Beef Cows		873	67,943	25.1%	31.9%
Pigs		185	1,760	20.5%	2.0%
Sheep & Lambs		363	13,257	21.4%	22.4%
Horses & Ponies		1,306	9,141	27.4%	27.4%
Goats		198	2,688	20.3%	18.5%
Mink		0	0	0.0%	0.0%
Bison		12	647	21.8%	9.9%
Deer		2	x	16.7%	na
Llamas & Alpacas		112	602	21.5%	23.7%
Rabbits		64	1,090	16.3%	20.4%
Colonies of Bees for Honey		254	6,661	24.3%	12.4%

		Farms	Share of B.C. 2016
Farms Selling Direct to Consumers⁹	#	1,485	26.2%
Farms Reporting Sales of Unprocessed Agricultural Products	#	1,439	26.0%
Farms Reporting Sales of Value-added Products	#	138	23.3%
Farms Reporting Using Farm Gate, Stands, Kiosks, U-pick	#	1,317	26.1%
Farms Reporting Using Farmers' Markets	#	329	26.4%
Farms Reporting Using Community Supported Agriculture	#	54	21.7%
Farms Reporting Using Other Methods	#	62	25.5%

Farms Reporting Technologies Used on Farms			
Computers/Laptops for Farm Management	#	2,440	27.6%
Smartphones/Tablets for Farm Management	#	1,678	27.9%
Automated Steering (Auto-steer)	#	82	17.3%
GPS Technology	#	224	20.4%
GIS Mapping (e.g., Soil Mapping)	#	117	34.9%
Greenhouse Automation	#	39	12.3%
Robotic Milking	#	14	19.4%
Automated Environmental Controls for Animal Housing	#	74	12.6%
Automated Animal Feeding	#	89	13.7%
Other Technology	#	62	42.5%

Farms Reporting Renewable Energy Systems Produced For Use on Farm on for Sale⁹	#	168	23.4%
Farms Reporting Solar Panels	#	145	23.6%
Farms Reporting Wind Turbines	#	17	34.7%
Farms Reporting Anaerobic Biodigester (Biogas or Methane)	#	1	10.0%
Farms Reporting Biodiesel Production Systems	#	0	0.0%
Farms Reporting Hydro Electric Power Generator	#	11	18.6%
Farms Reporting Other Renewable Energy Producing Systems	#	13	24.5%

Source: Statistics Canada and Adapted from Statistics Canada. Census of Agriculture 2016, unless otherwise specified.
Prepared by Ministry of Agriculture, Corporate Statistics and Research Unit. Summer 2017

End Notes

- 1 Source: Statistics Canada. Census of Population.
- 2 Source: Statistics Canada, Geosuite: <http://www12.statcan.gc.ca/census-recensement/2016/geo/index-eng.cfm>
- 3 Source: Adapted from Agricultural Land Commission. Agricultural Land Reserve as of January 1, 2008 (for 2006) & April 1, 2012 (for 2011) & April 2017 (for 2016).
- 4 Source: Adapted from Statistics Canada. Censuses of Population.
- 5 Total farmland area includes both workable and non-workable land on farm operations in B.C.
- 6 Crops include hay crops, field crops, field vegetables, fruits and nuts, sod and nursery products.
- 7 Other farmland area includes: woodland, wetlands, Christmas tree land, land on which farm buildings, barnyards, lanes, home gardens, greenhouses and mushroom houses are located, and idle land.
- 8 Does not include those crop areas suppressed to meet the confidentiality requirements of the Statistics Act.
- 9 The "number of farms reporting" may not equal the sum of the parts because farms reporting more than one category (or activity) are only counted once.

Notes

Totals may not add up due to rounding
x - indicates farms reporting but information suppressed to meet the confidentiality requirements of the Statistics Act
na - indicates data is not available or applicable

Agriculture in Brief

VANCOUVER ISLAND - COAST

2016



Jurisdictional Makeup

Includes Regional Districts: Capital, Cowichan Valley, Nanaimo, Alberni-Clayoquot, Comox Valley, Strathcona and Mount Waddington, Powell River & Central Coast.

Population (2016) ¹	#	799,400
Jurisdictional Land Area ²	ha	8,423,161
Agricultural Land Reserve (2016) ³	ha	120,082
Population Increase (2011-2016) ⁴	#	40,034

Census of Agriculture Data		2016	Share of B.C. 2016
Total Farmland Area ⁵	ha	51,829	2.0%
Number of Farms	#	2,786	15.9%
Average Farm Size	ha	18.6	na
Total Farm Operators	#	4,220	16.0%
Total Farm Capital		\$3,533,727,605	9.4%
Total Gross Farm Receipts		\$200,522,977	5.4%
Total Number of Employees	#	3,513	7.9%

Farmland Use	ha	51,829	2.0%
Crops ⁶	ha	18,489	3.2%
Summerfallow	ha	174	3.3%
Tame or Seeded Pasture	ha	4,259	2.1%
Natural Land for Pasture	ha	8,734	0.6%
All Other Land ⁷	ha	20,173	5.5%

Crop Area			
Hay Crop ⁸	ha	13,289	3.8%
Field Crops ⁸	ha	2,725	1.4%
Fruits, Berries & Nuts	ha	1,072	4.2%
Vegetables	ha	762	11.8%
Nursery Products	ha	436	11.9%
Sod Grown for Sale	ha	49	6.0%
Greenhouse Flower Area	m ²	84,483	4.6%
Greenhouse Vegetable Area	m ²	97,079	3.2%
Other Greenhouse Production Area	m ²	77,126	18.2%
Mushroom Growing Area	m ²	4,127	1.9%
Christmas Tree Growing Area	ha	329	16.3%

Area Irrigated	ha	6,209	5.4%
-----------------------	----	-------	------

Farms Reporting Organic Products for Sale⁹	#	89	16.2%
Farms Reporting Certified Products	#	60	13.4%
Farms Reporting in Transition Products	#	30	27.3%

Farms With Written Succession Plans⁹	#	115	9.8%
Family Members as Successors	#	106	9.7%
Non-family Members as Successors	#	9	10.8%

Census of Agriculture Data (continued)		2016		Share of B.C. 2016	
Animals on Farms		Farms	Number	Farms	Number
Hens & Chickens		1,286	587,261	25.6%	2.8%
Turkeys		125	23,098	23.6%	2.7%
Total Other Poultry		367	6,116	31.9%	1.1%
Cattle & Calves		529	22,767	10.3%	3.5%
Dairy Cows		83	5,776	12.1%	7.6%
Beef Cows		332	3,889	9.5%	1.8%
Pigs		217	3,161	24.0%	3.6%
Sheep & Lambs		500	13,266	29.5%	22.4%
Horses & Ponies		515	2,535	10.8%	7.6%
Goats		222	1,914	22.8%	13.2%
Mink		0	0	0.0%	0.0%
Bison		2	x	3.6%	na
Deer		4	405	33.3%	77.9%
Llamas & Alpacas		91	596	17.5%	23.5%
Rabbits		77	780	19.6%	14.6%
Colonies of Bees for Honey		241	4,350	23.1%	8.1%

		Farms	Share of B.C. 2016
Farms Selling Direct to Consumers⁹	#	1,593	28.1%
Farms Reporting Sales of Unprocessed Agricultural Products	#	1,559	28.2%
Farms Reporting Sales of Value-added Products	#	222	37.5%
Farms Reporting Using Farm Gate, Stands, Kiosks, U-pick	#	1,458	28.9%
Farms Reporting Using Farmers' Markets	#	371	29.8%
Farms Reporting Using Community Supported Agriculture	#	82	32.9%
Farms Reporting Using Other Methods	#	47	19.3%

Farms Reporting Technologies Used on Farms

Computers/Laptops for Farm Management	#	1,406	15.9%
Smartphones/Tablets for Farm Management	#	852	14.2%
Automated Steering (Auto-steer)	#	21	4.4%
GPS Technology	#	84	7.7%
GIS Mapping (e.g., Soil Mapping)	#	42	12.5%
Greenhouse Automation	#	75	23.6%
Robotic Milking	#	7	9.7%
Automated Environmental Controls for Animal Housing	#	63	10.7%
Automated Animal Feeding	#	70	10.8%
Other Technology	#	23	15.8%

Farms Reporting Renewable Energy Systems Produced For Use on Farm on for Sale⁹	#	143	19.9%
Farms Reporting Solar Panels	#	131	21.3%
Farms Reporting Wind Turbines	#	4	8.2%
Farms Reporting Anaerobic Biodigester (Biogas or Methane)	#	2	20.0%
Farms Reporting Biodiesel Production Systems	#	0	0.0%
Farms Reporting Hydro Electric Power Generator	#	6	10.2%
Farms Reporting Other Renewable Energy Producing Systems	#	9	17.0%

Source: Statistics Canada and Adapted from Statistics Canada. Census of Agriculture 2016, unless otherwise specified.
Prepared by the Ministry of Agriculture, Corporate Statistics and Research Unit. Summer 2017

End Notes

1 Source: Statistics Canada. Census of Population.

2 Source: Statistics Canada, Geosuite: <http://www12.statcan.gc.ca/census-recensement/2016/geo/index-eng.cfm>

3 Source: Adapted from Agricultural Land Commission. Agricultural Land Reserve as of January 1, 2008 (for 2006) & April 1, 2012 (for 2011) & April 2017 (for 2016).

4 Source: Adapted from Statistics Canada. Censuses of Population.

5 Total farmland area includes both workable and non-workable land on farm operations in B.C.

6 Crops include hay crops, field crops, field vegetables, fruits and nuts, sod and nursery products.

7 Other farmland area includes: woodland, wetlands, Christmas tree land, land on which farm buildings, barnyards, lanes, home gardens, greenhouses and mushroom houses, and idle land.

8 Does not include those crop areas suppressed to meet the confidentiality requirements of the Statistics Act.

9 The "number of farms reporting" may not equal the sum of the parts because farms reporting more than one category (or activity) are only counted once.

Notes

Totals may not add up due to rounding

x - indicates farms reporting but information suppressed to meet the confidentiality requirements of the Statistics Act

na - indicates data is not available or applicable



Ministry of
Agriculture