



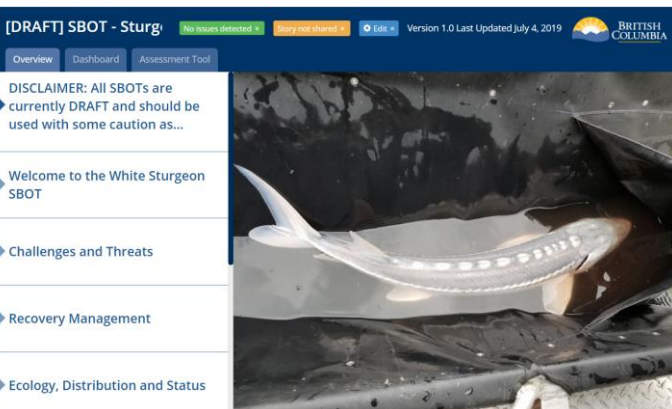
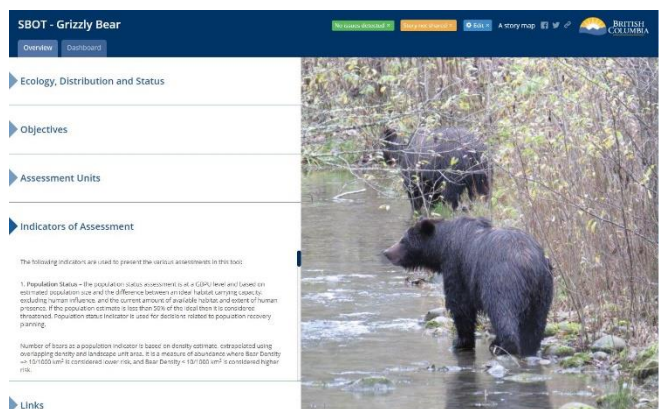
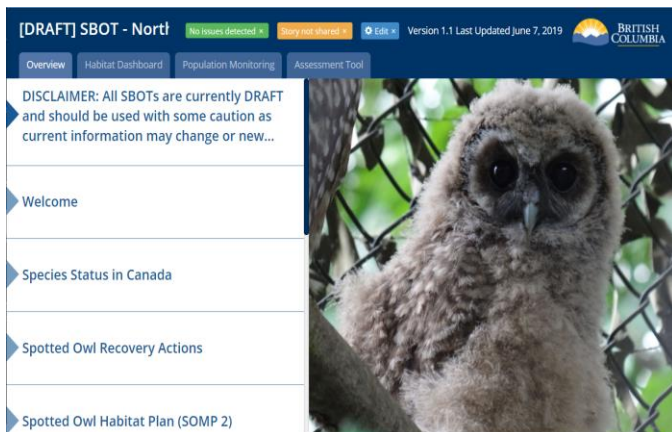
Stewardship Baseline Objectives Tool (SBOT)

USER GUIDE (Version 1.0)

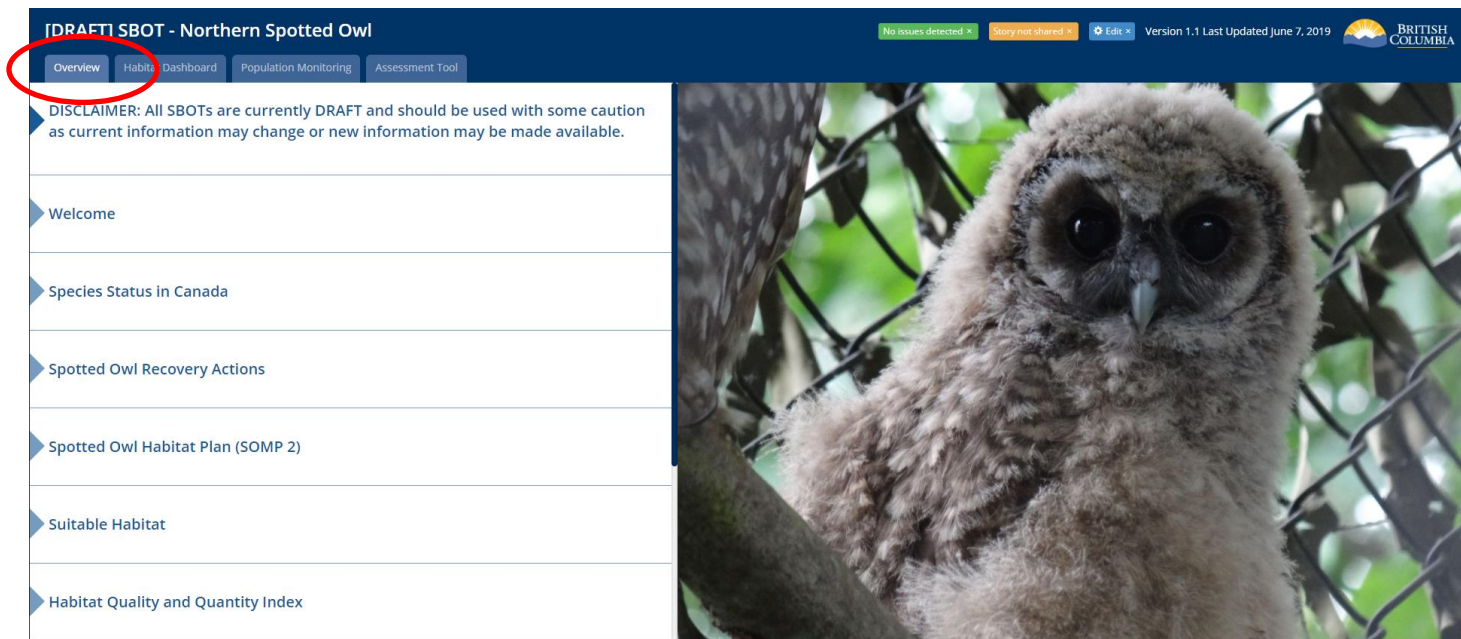
User Guide Contents:

- | | |
|---|----------------------|
| 1. How to use SBOT Web Map Applications | <i>(page 2)</i> |
| Overview Tab | <i>(page 2)</i> |
| Dashboard Tab | <i>(page 3)</i> |
| Examples | <i>(pages 3-4)</i> |
| 2. How to navigate the Dashboard Tab | <i>(pages 5-6)</i> |
| 3. How to use the Assessment Tool Tab | <i>(page 7-10)</i> |
| Sample Reports | <i>(page 11-16)</i> |
| 4. Other Screenshot Examples of Functionalities | <i>(pages 16-20)</i> |

1. How to use SBOT Web Map Applications

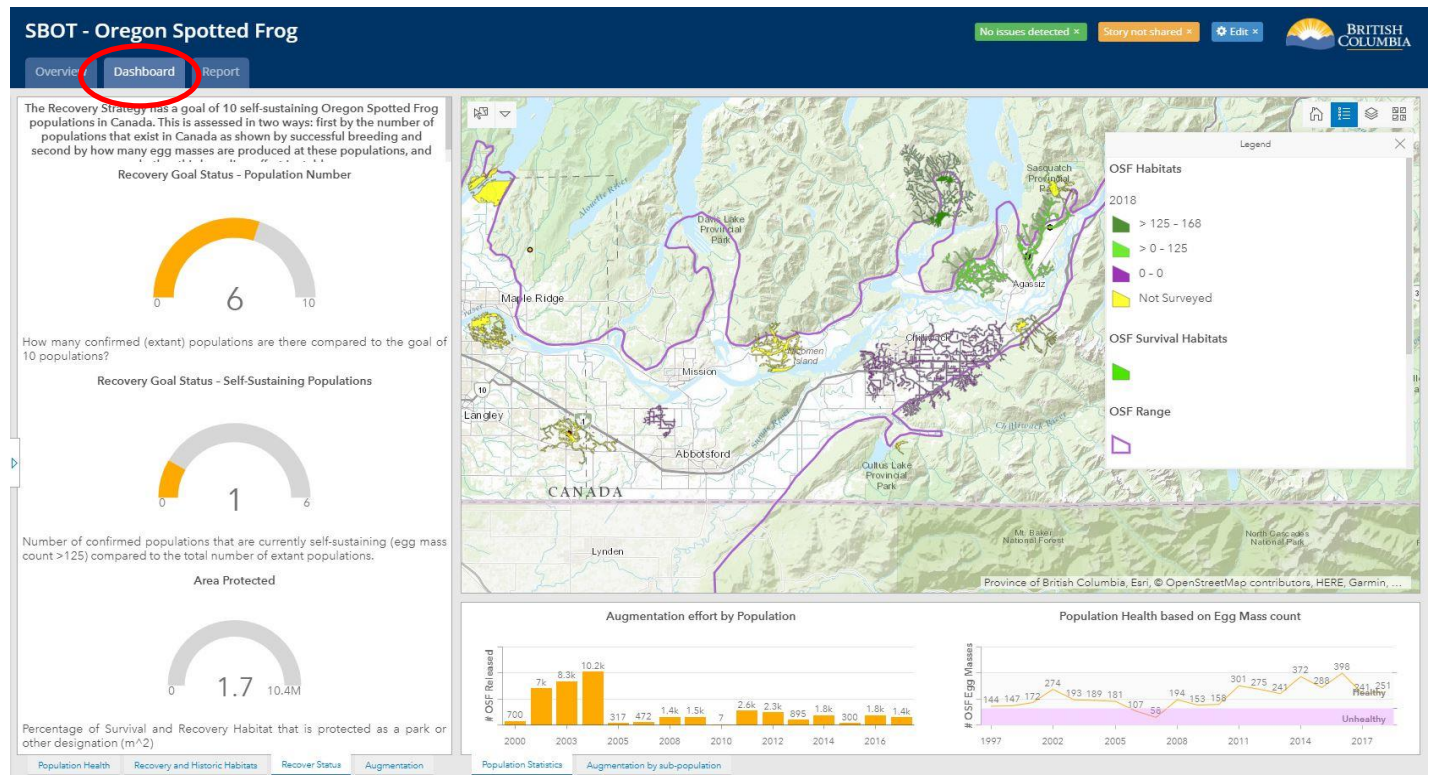


Overview Tab: From the top bar menu (blue bar on top of Web Map page) click on **Overview** to display value description, legal and/or non-legal objectives, recovery goals, management recommendations, and other value information.

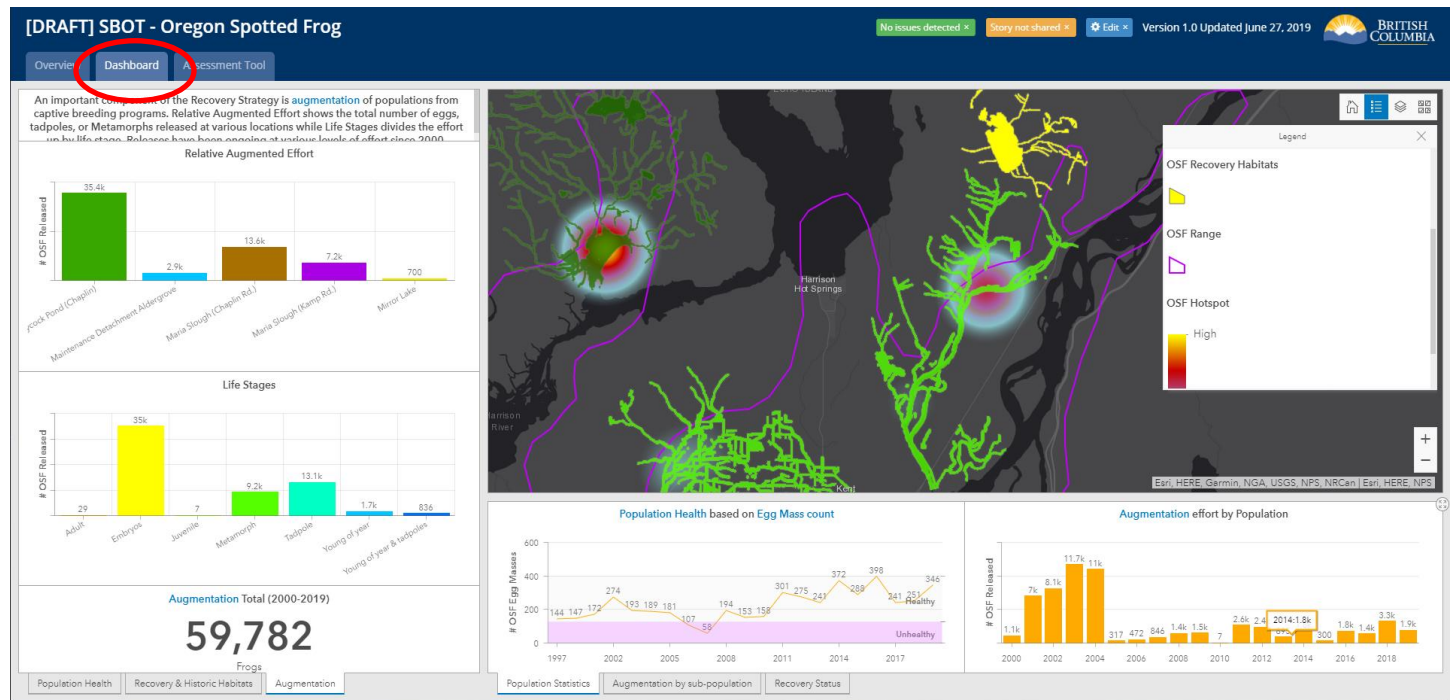


Dashboard Tab: From Top Bar Menu (Blue bar on top of Web Map page) click on **Dashboard** to display specific value information like population status by assessment unit, habitat suitability, habitat quality and quantity, habitat suitability trends, assessments of indicators, status of objectives, etc.

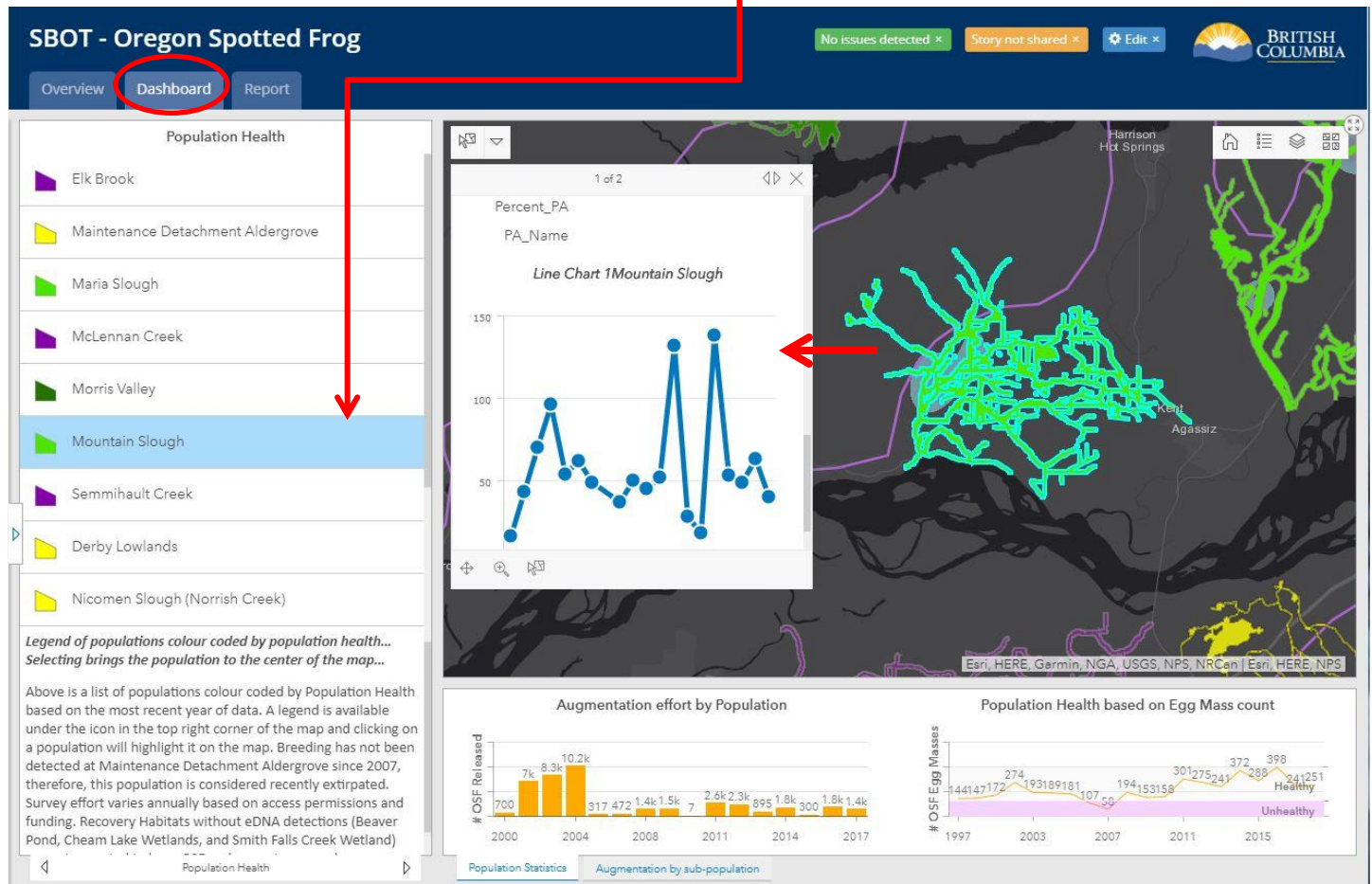
Example 1: Oregon Spotted Frog Recovery Goal Status



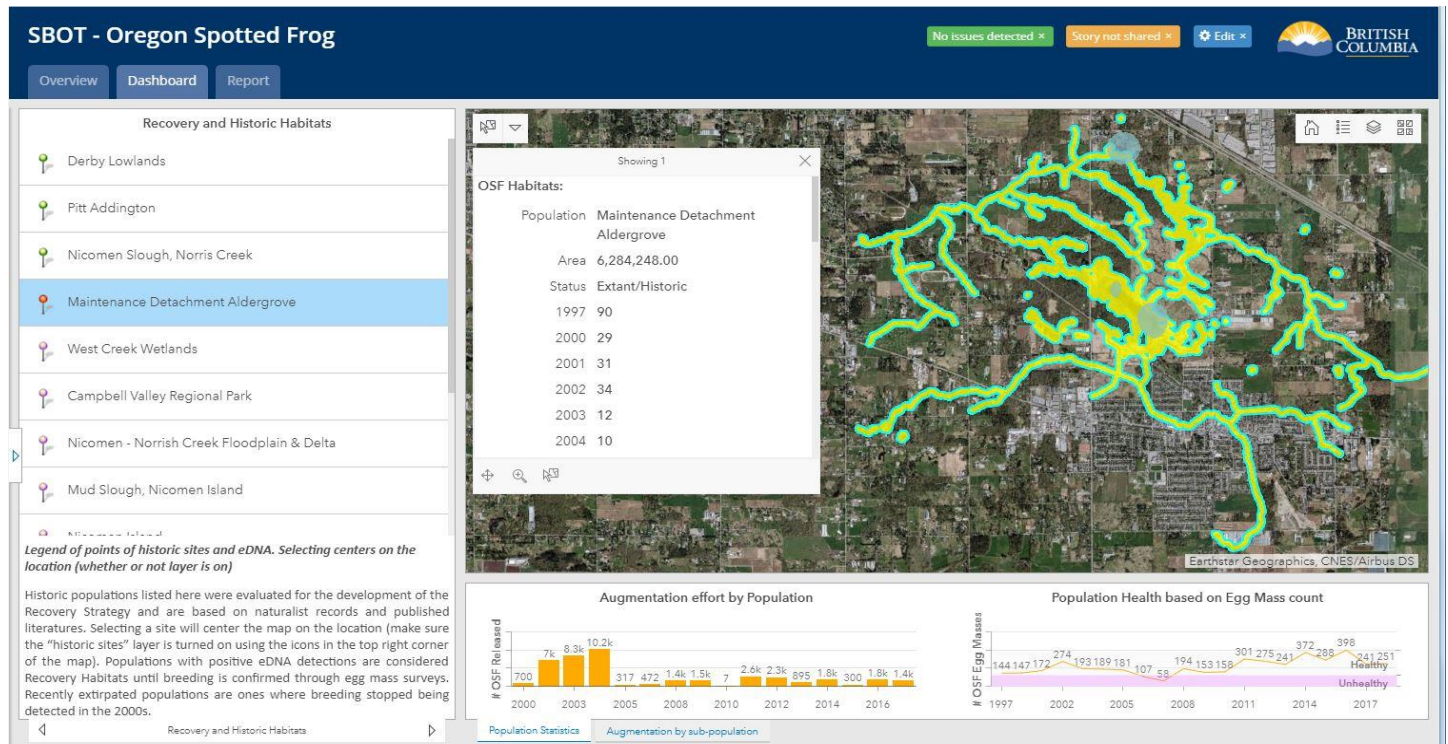
Example 2: Oregon Spotted Frog Augmentation Effort by Sub-Population



Example 3: Oregon Spotted Frog Population Status (possible selection by Location)

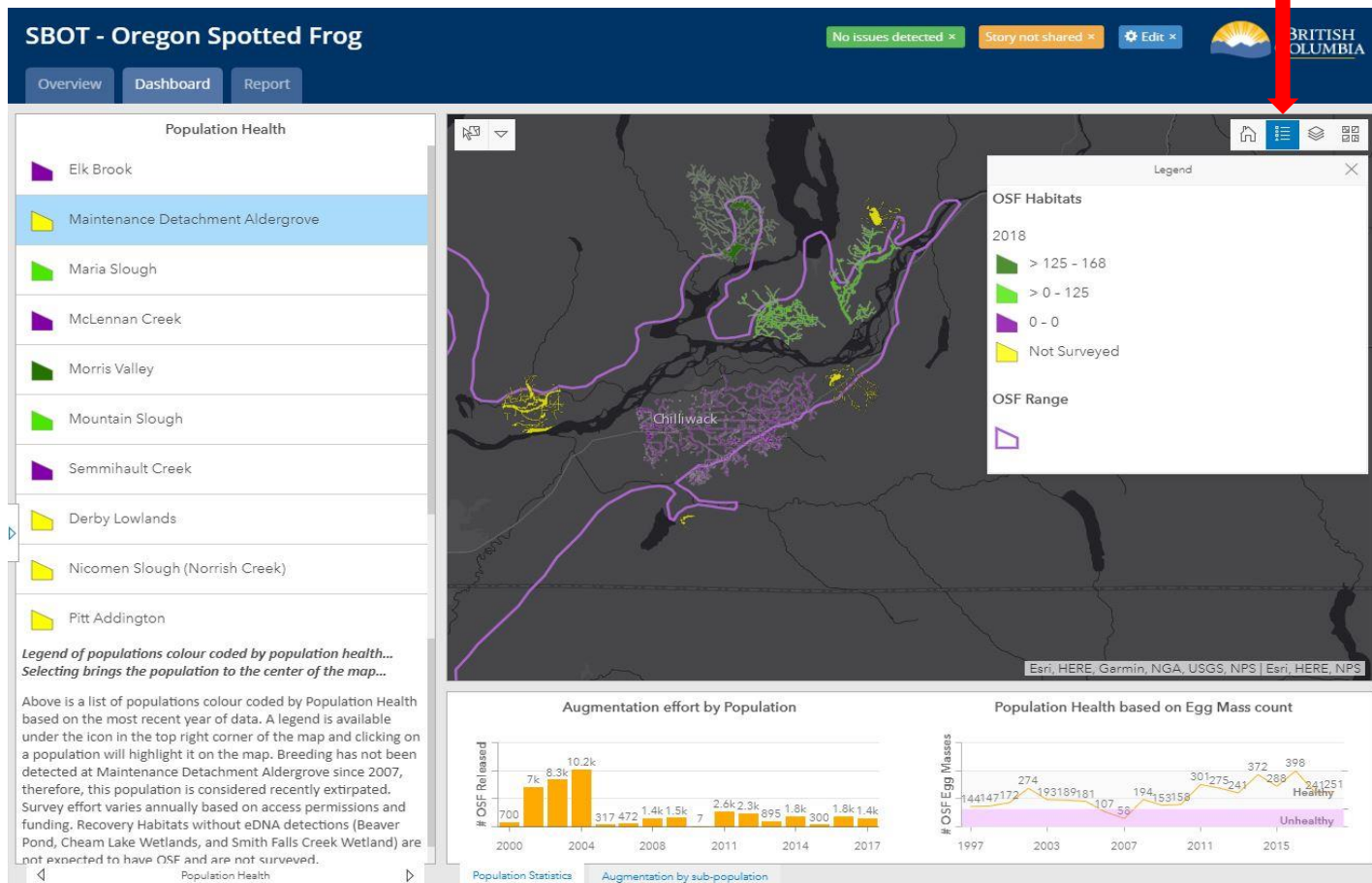


Example 4: Oregon Spotted Frog Recovery and Historic Habitat Population Status (possible selection by Location)



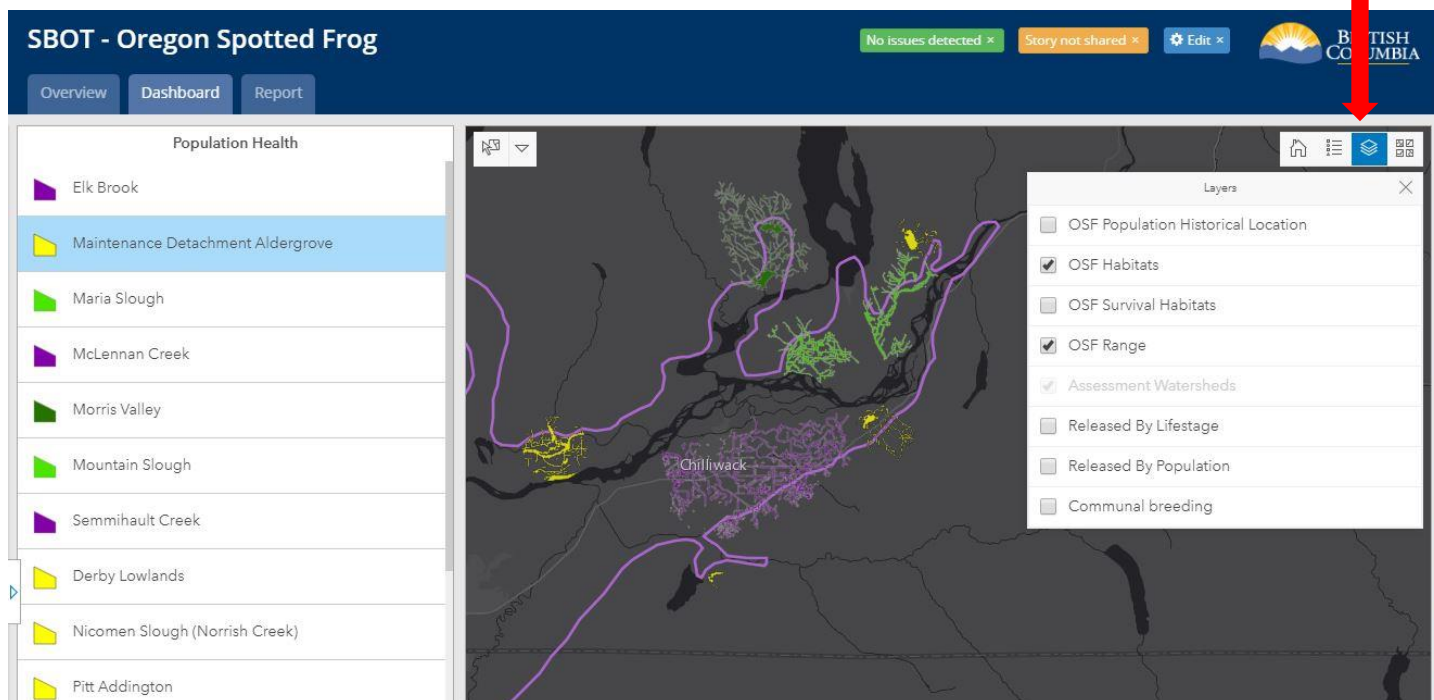
2. How to Navigate the Dashboard Tab

Map Legend

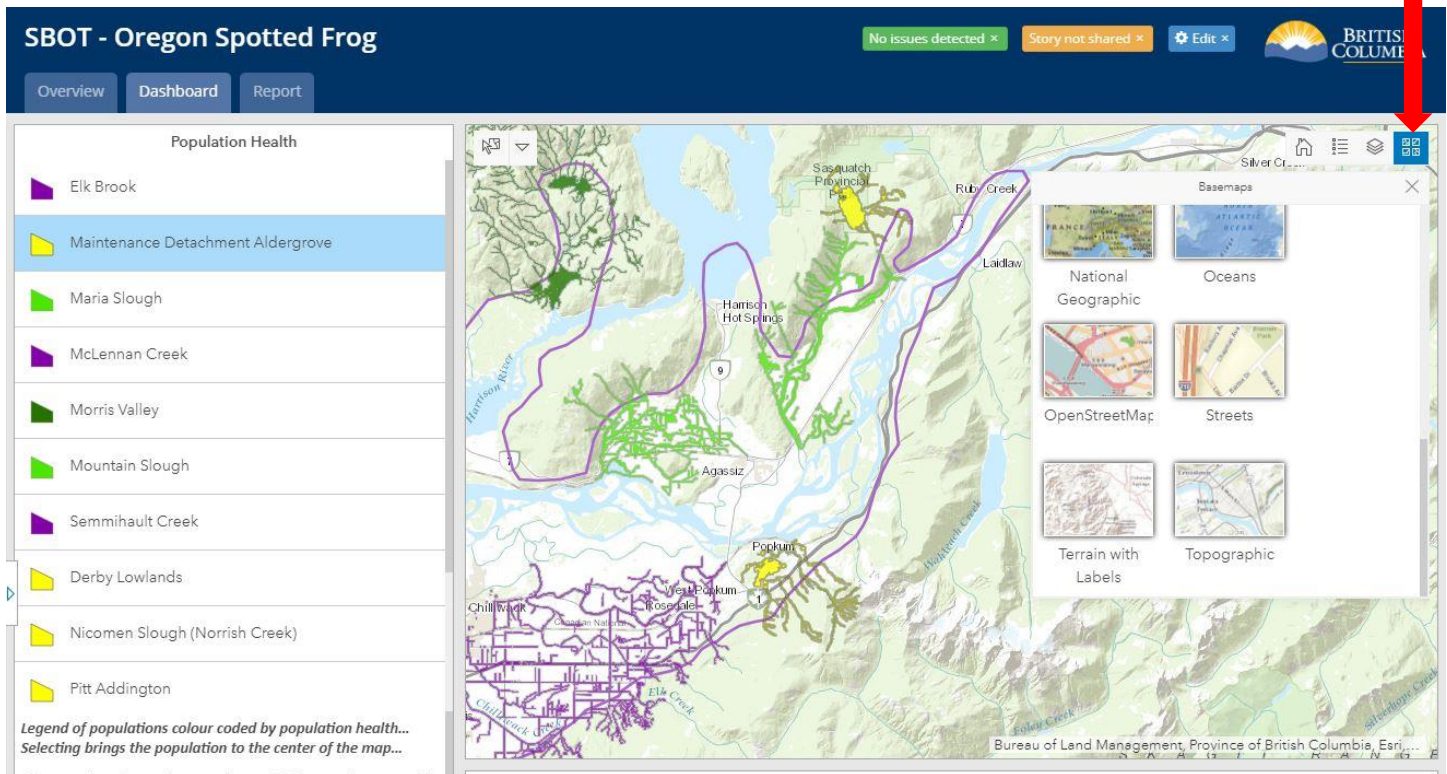


Dashboard Display Tabs

Layer selection

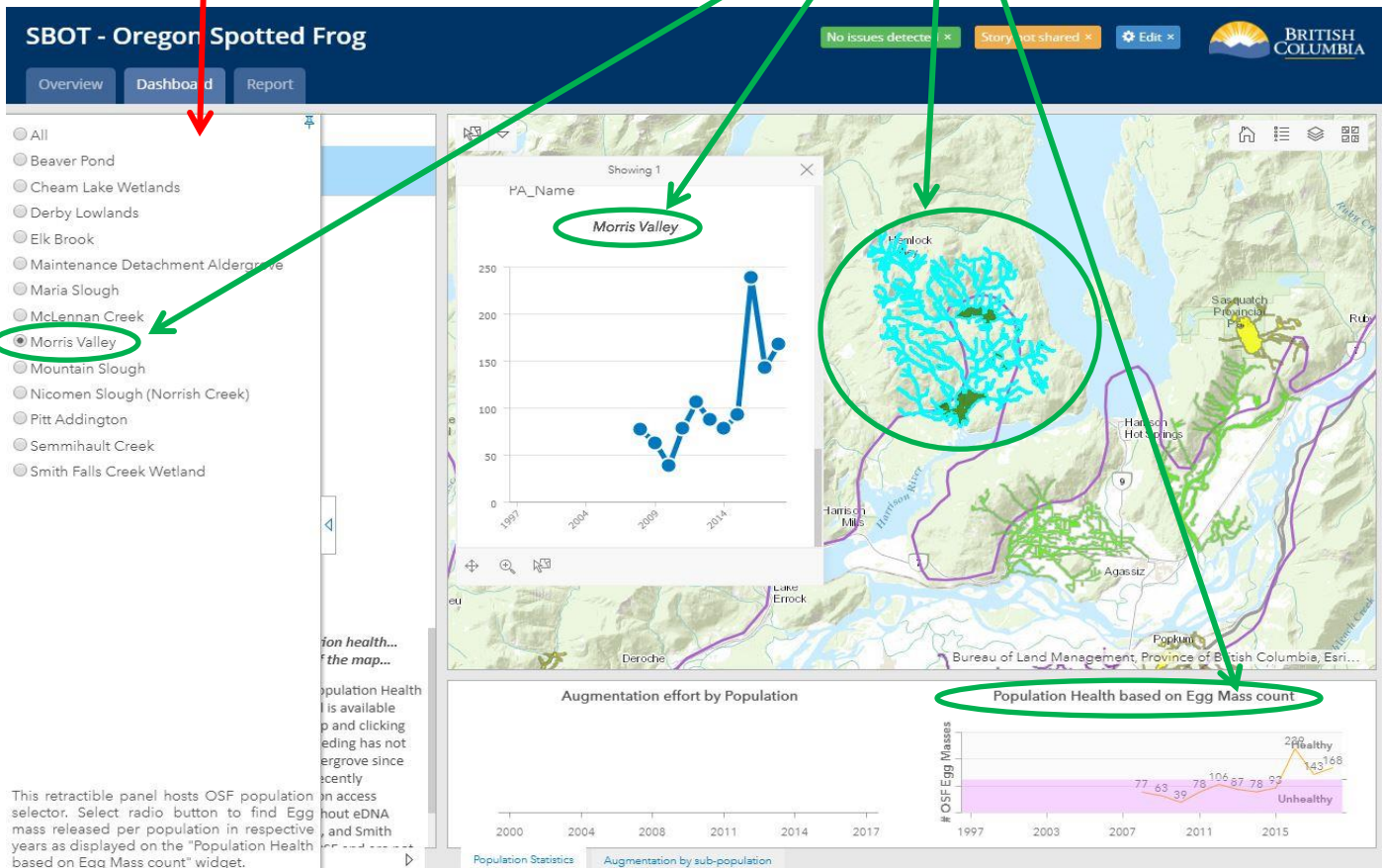


Background Basemap selection



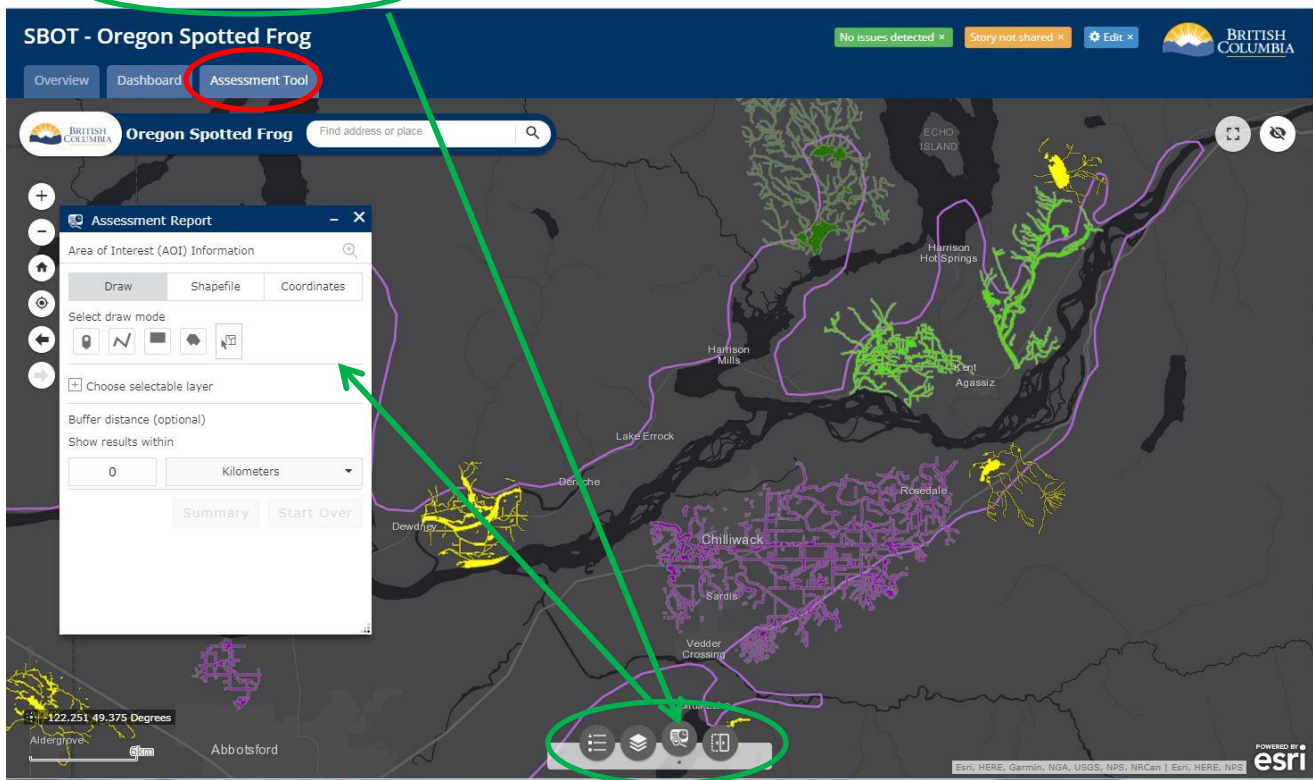
Select by location tool

Dashboard display of selection

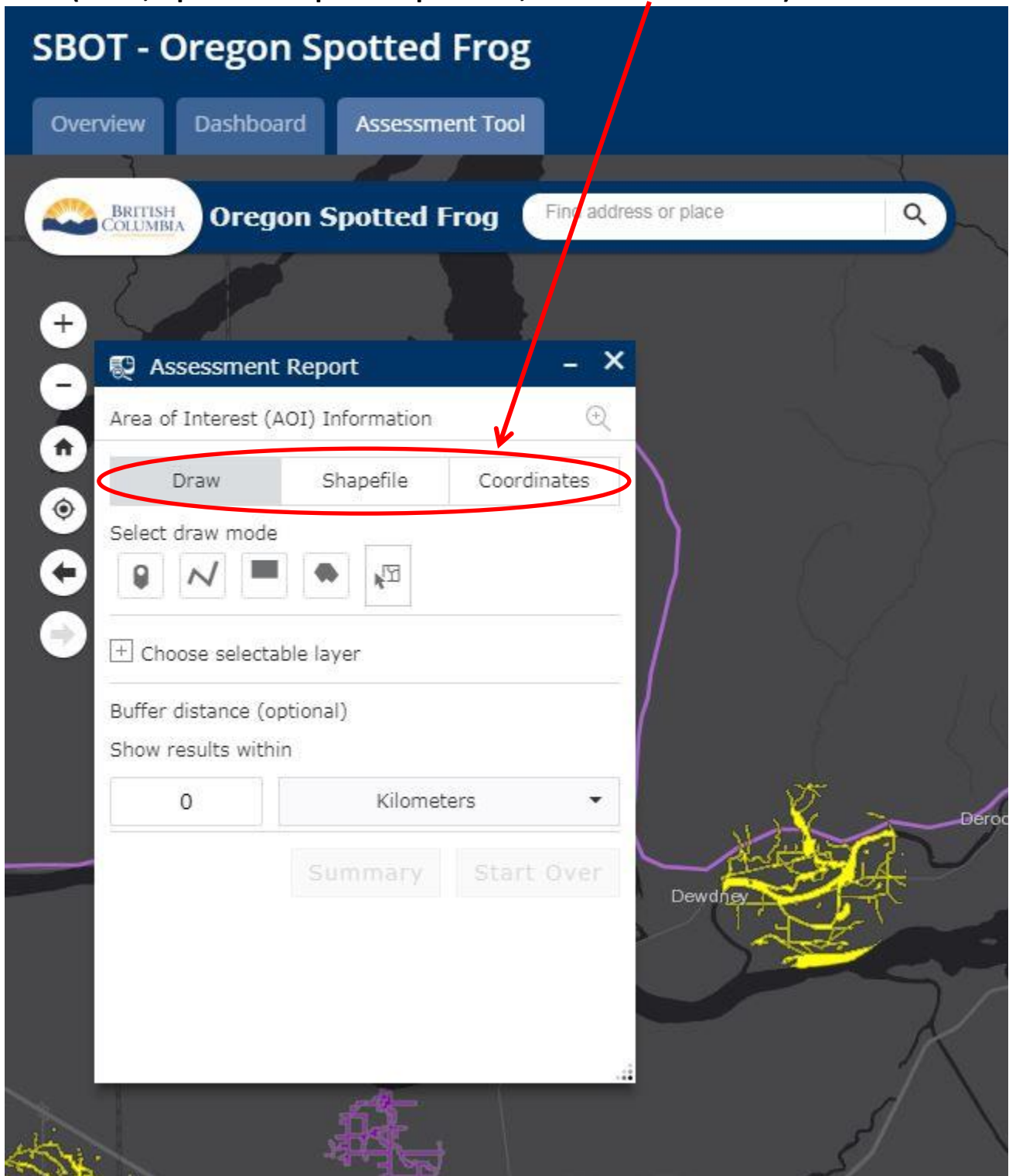


3. How to Use the Assessment Tool Tab:

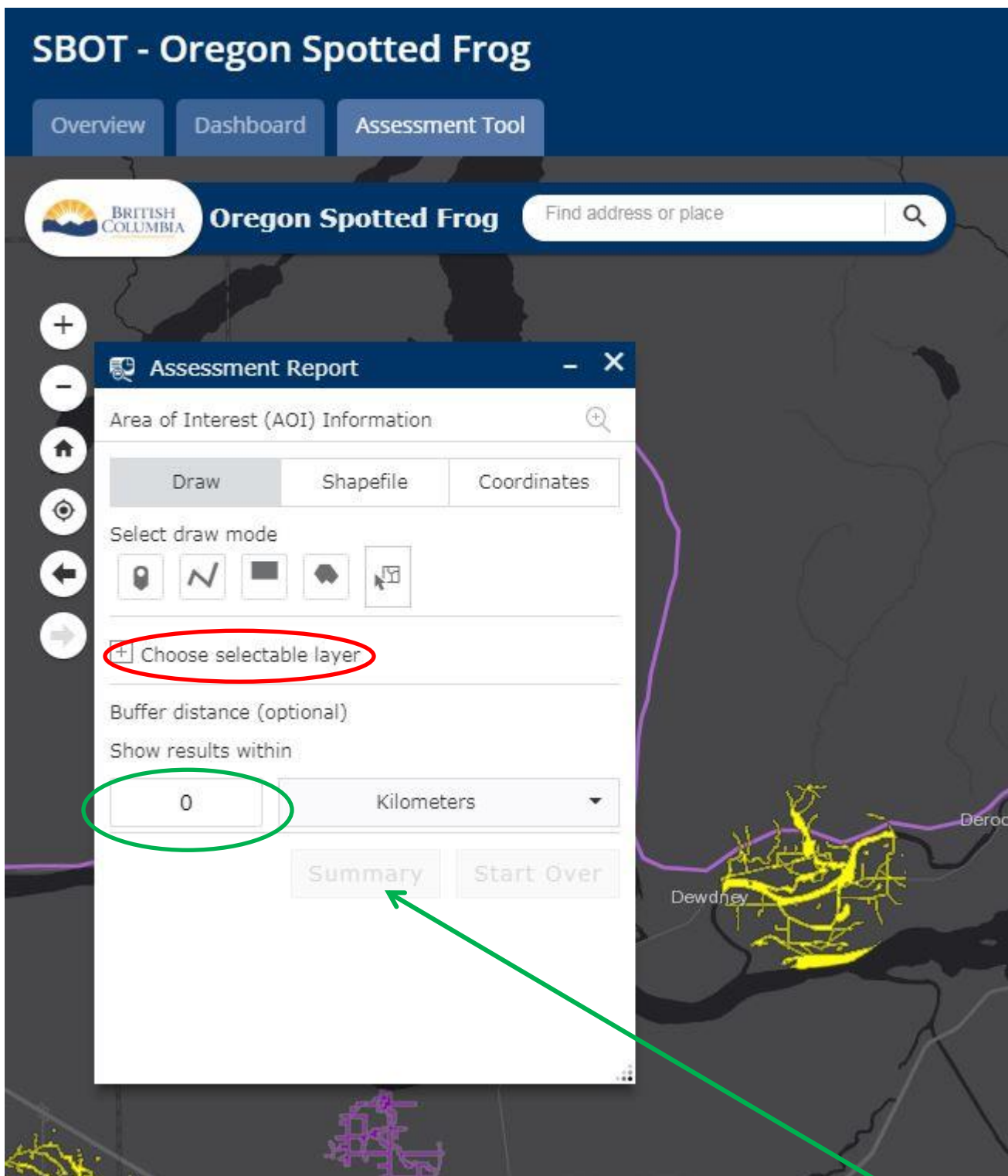
From Top Bar Menu click on **Assessment Tool** to create and generate a custom report. Use the toolbar below to select **Assessment Report icon**



Step 1: Select from three options to select area of interest (AOI), then draw the AOI (Draw, Upload a Shapefile .zip format, or Enter Coordinates)

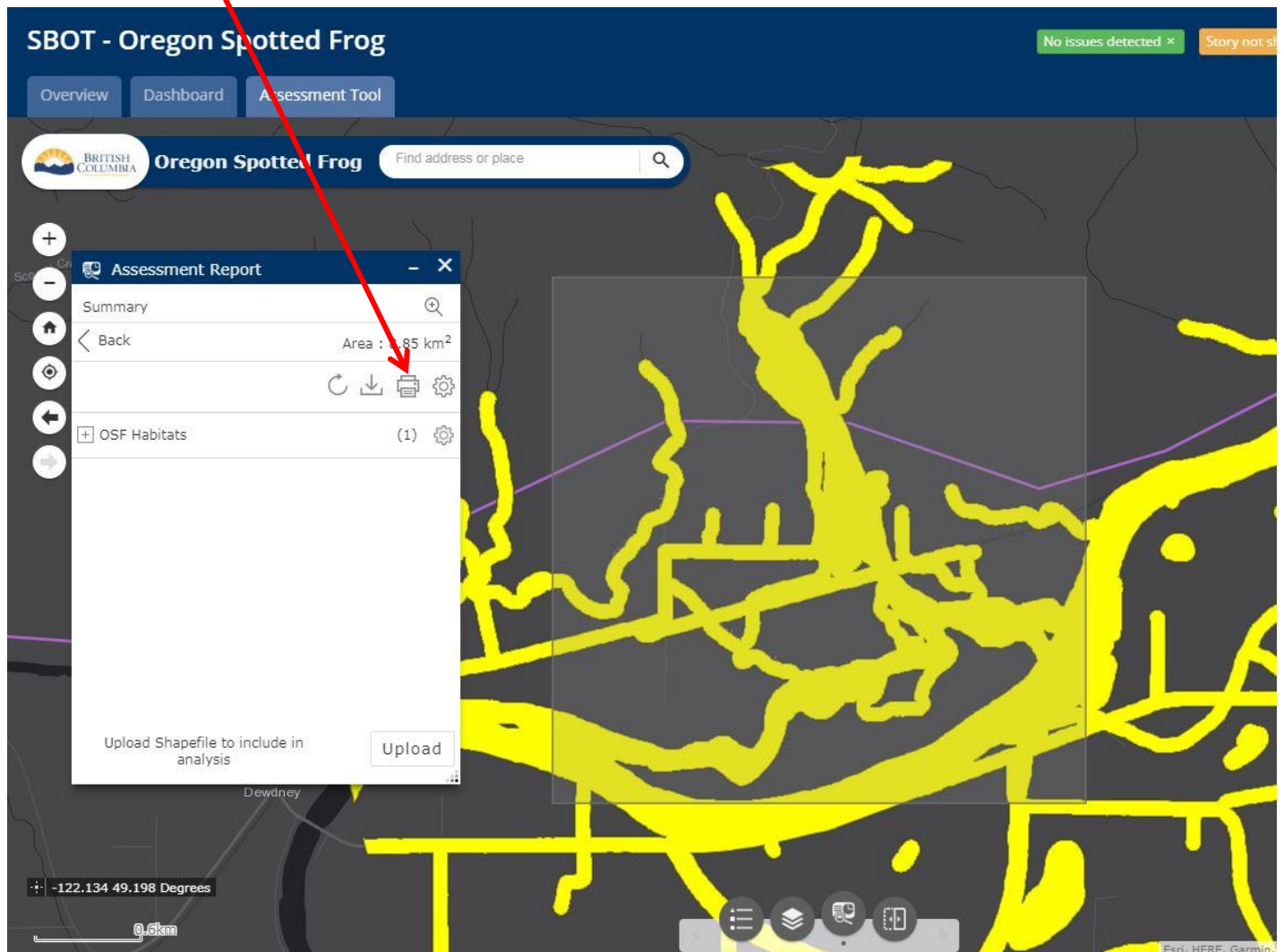


Step 2: Choose **selectable layers** (or default layers may apply) from Layers list to draw on the map and define a **buffer distance** to show results within the defined buffer.



Step 3: Generate the Assessment Report with a single click using the **Summary button**.

Step 4: **Print** the Assessment Report in pdf format. A sample report is included below.



Sample Reports

7/9/2019

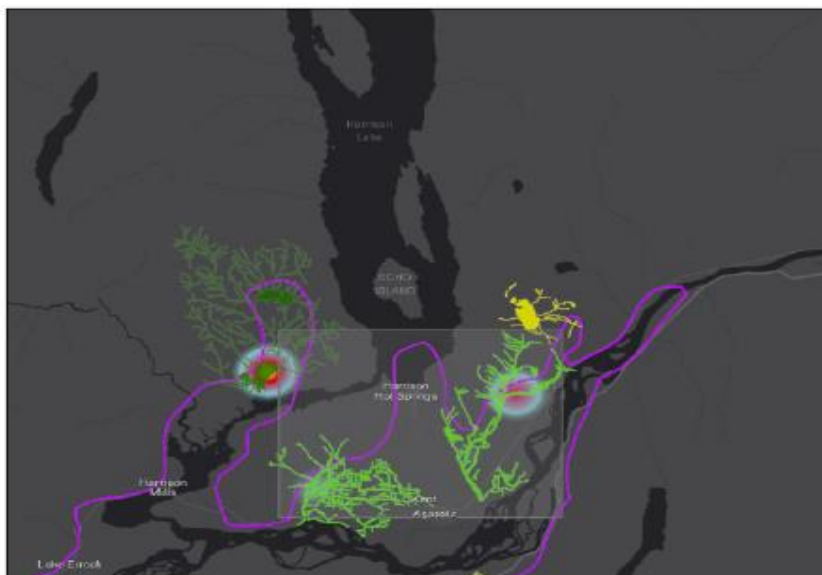


Oregon Spotted Frog Assessment Report

Area of Interest (AOI) Information

Area : 159,659,078.14 m²

Jul 9 2019 8:58:54 Pacific Daylight Time



1/5

Summary

Name	Count	Area(m ²)	Length(m)
Critical Habitats on Federal Lands	2	3,111,565.45	N/A
Critical Habitats on Non-Federal Lands	3	15,814,880.80	N/A
Survival Habitats	0	0	N/A
Recovery Habitats	1	163,667.70	N/A

Critical Habitats on Federal Lands

#	Assessment Unit	Oregon Spotted Frog Management Goal	Legal Objectives	Non-Legal Objectives	Development Advice	Area(m²)
1	Maria Slough	To prevent further habitat degradation/loss and population declines by protecting, managing, and restoring habitat	1) Oregon Spotted Frogs are protected under the BC Wildlife Act, 2) Federal Species at Risk Act protects Oregon Spotted Frogs and their residences, 3) Habitat is protected by the Water Sustainability Act by regulation of changes in and about a stream.	1) Retain natural water levels, 2) Prevent pollution and sedimentation, 3) Support natural vegetation (instream and riparian), 4) Limit invasive plants and animals, 5) Maintain connectivity of breeding, foraging and overwintering habitats.	1) Consult a species expert or the South Coast office, 2) SARA permit required, 3) WSA permit required for works around water, 4) Apply the Environmental Mitigation Policy, 5) Follow amphibian salvage BMPs as necessary.	2,667,135.46
2	Mountain Slough	To prevent further habitat degradation/loss and population declines by protecting, managing, and restoring habitat	1) Oregon Spotted Frogs are protected under the BC Wildlife Act, 2) Federal Species at Risk Act protects Oregon Spotted Frogs and their residences, 3) Habitat is protected by the Water Sustainability Act by regulation of changes in and about a stream.	1) Retain natural water levels, 2) Prevent pollution and sedimentation, 3) Support natural vegetation (instream and riparian), 4) Limit invasive plants and animals, 5) Maintain connectivity of breeding, foraging and overwintering habitats.	1) Consult a species expert or the South Coast office, 2) SARA permit required, 3) WSA permit required for works around water, 4) Apply the Environmental Mitigation Policy, 5) Follow amphibian salvage BMPs as necessary.	444,429.99

Critical Habitats on Non-Federal Lands

#	Assessment Unit	Oregon Spotted Frog Management Goal	Legal Objectives	Non-Legal Objectives	Development Advice	Area(m²)
1	Mountain Slough	To prevent further habitat degradation/loss and population declines by protecting, managing, and restoring habitat	1) Oregon Spotted Frogs are protected under the BC Wildlife Act, 2) Federal Species at Risk Act protects Oregon Spotted Frogs and their residences, 3) Habitat is protected by the Water Sustainability Act by regulation of changes in and about a stream.	1) Retain natural water levels, 2) Prevent pollution and sedimentation, 3) Support natural vegetation (instream and riparian), 4) Limit invasive plants and animals, 5) Maintain connectivity of breeding, foraging and overwintering habitats.	1) Consult a species expert or the South Coast office, 2) SARA permit required, 3) WSA permit required for works around water, 4) Apply the Environmental Mitigation Policy, 5) Follow amphibian salvage BMPs as necessary.	7,957,691.45
2	Maria Slough	To prevent further habitat degradation/loss and population declines by protecting, managing, and restoring habitat	1) Oregon Spotted Frogs are protected under the BC Wildlife Act, 2) Federal Species at Risk Act protects Oregon Spotted Frogs and their residences, 3) Habitat is protected by the Water Sustainability Act by regulation of changes in and about a stream.	1) Retain natural water levels, 2) Prevent pollution and sedimentation, 3) Support natural vegetation (instream and riparian), 4) Limit invasive plants and animals, 5) Maintain connectivity of breeding, foraging and overwintering habitats.	1) Consult a species expert or the South Coast office, 2) SARA permit required, 3) WSA permit required for works around water, 4) Apply the Environmental Mitigation Policy, 5) Follow amphibian salvage BMPs as necessary.	6,293,314.59

3	Morris Valley	To prevent further habitat degradation/loss and population declines by protecting, managing, and restoring habitat	1) Oregon Spotted Frogs are protected under the BC Wildlife Act, 2) Federal Species at Risk Act protects Oregon Spotted Frogs and their residences, 3) Habitat is protected by the Water Sustainability Act by regulation of changes in and about a stream.	1) Retain natural water levels, 2) Prevent pollution and sedimentation, 3) Support natural vegetation (instream and riparian), 4) Limit invasive plants and animals, 5) Maintain connectivity of breeding, foraging and overwintering habitats.	1) Consult a species expert or the South Coast office, 2) SARA permit required, 3) WSA permit required for works around water, 4) Apply the Environmental Mitigation Policy, 5) Follow amphibian salvage BMPs as necessary.	1,563,874.76
---	---------------	--	---	---	---	--------------

Recovery Habitats

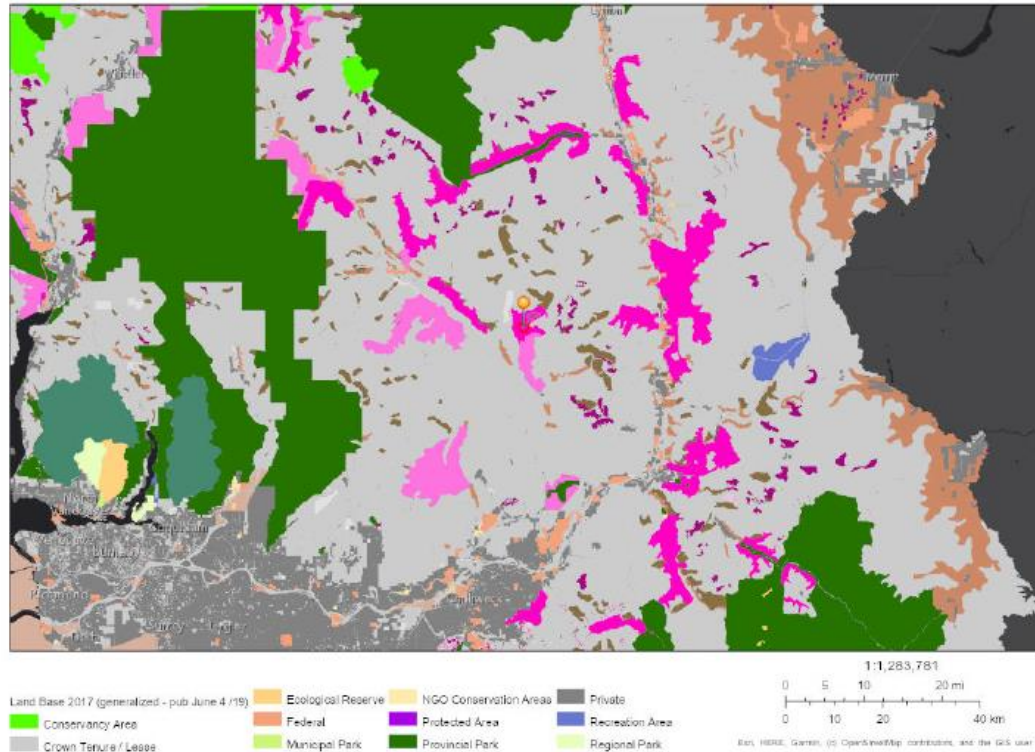
#	Assessment Unit	Oregon Spotted Frog Management Goal	Legal Objectives	Non-Legal Objectives	Development Advice	Area(m²)
1	Beaver Pond	To prevent further habitat degradation/loss and population declines by protecting, managing, and restoring habitat	1) Oregon Spotted Frogs are protected under the BC Wildlife Act, 2) Federal Species at Risk Act protects Oregon Spotted Frogs and their residences, 3) Habitat is protected by the Water Sustainability Act by regulation of changes in and about a stream.	1) Retain natural water levels, 2) Prevent pollution and sedimentation, 3) Support natural vegetation (instream and riparian), 4) Limit invasive plants and animals, 5) Maintain connectivity of breeding, foraging and overwintering habitats.	1) OSF are not known for this area but habitat could be critical for recovery efforts. Consider impacts to habitat prior to development, 2) Consult a species expert or the South Coast office, 3) WSA permit required for works around water.	163,667.70

Disclaimer: This report and map is for general information only. The province of British Columbia does not guarantee its accuracy or correctness.

Area of Interest (AOI) Information

Area : 313.78 hectares

Jul 15 2019 10:04:56 Pacific Daylight Time



Summary

Name	Count	Area(hectares)	Length(km)
Habitat Suitability	33	244.23	N/A
Habitat Suitability & Land Base Type	30	244.23	N/A
HQQI by Landscape Unit	1	313.78	N/A
HQQI by Population Unit	1	313.78	N/A

Habitat Suitability

#	Habitat Type	Area(hectares)
1	Foraging	100.01
2	Capable	96.17
3	Nesting	48.05

Habitat Suitability & Land Base Type

#	Habitat / Type / Name	SPOW Management Goal	Legal Objectives	Non-Legal Objectives	Development Advice	GAR Link	Area(hectares)
1	Foraging / WHA - LTOH / 2-503 Hornet/Clear	To protect and restore all capable Spotted Owl habitats to nesting habitat conditions over time, where feasible.	1) Wildlife Habitat Area are protected by legal orders under the FRPA and the OGAA, 2) Spotted Owls and nests are protected under the Wildlife Act, 3) Federal Species at Risk Act protects Spotted Owls and their habitat (~ 3,200 ha Critical Habitat).	1) Prohibit disturbance activities within known 80 ha nest reserves, 2) Increase the amount and quality of suitable habitat through silviculture, 3) Apply BMPs for Managing Spotted Owl Habitat.	1) WHA Exemption is required prior to any falling of trees if the activity is non-compliant with the WHA Order, 2) Apply QEP Questionnaire, 3) Apply the Environmental Mitigation Policy to mitigate impacts, 4) Apply BMP for Managing Spotted Owl Habitat.	http://www.env.gov.bc.ca/wld/documents/wha/SP_OW_2494-510_Order.pdf	100.01
2	Capable / WHA - LTOH / 2-503 Hornet/Clear	To protect and restore all capable Spotted Owl habitats to nesting habitat conditions over time, where feasible.	1) Wildlife Habitat Area are protected by legal orders under the FRPA and the OGAA, 2) Spotted Owls and nests are protected under the Wildlife Act, 3) Federal Species at Risk Act protects Spotted Owls and their habitat (~ 3,200 ha Critical Habitat).	1) Prohibit disturbance activities within known 80 ha nest reserves, 2) Increase the amount and quality of suitable habitat through silviculture, 3) Apply BMPs for Managing Spotted Owl Habitat.	1) WHA Exemption is required prior to any falling of trees if the activity is non-compliant with the WHA Order, 2) Apply QEP Questionnaire, 3) Apply the Environmental Mitigation Policy to mitigate impacts, 4) Apply BMP for Managing Spotted Owl Habitat.	http://www.env.gov.bc.ca/wld/documents/wha/SP_OW_2494-510_Order.pdf	96.17
3	Nesting / WHA - LTOH / 2-503 Hornet/Clear	To protect and restore all capable Spotted Owl habitats to nesting habitat conditions over time, where feasible.	1) Wildlife Habitat Area are protected by legal orders under the FRPA and the OGAA, 2) Spotted Owls and nests are protected under the Wildlife Act, 3) Federal Species at Risk Act protects Spotted Owls and their habitat (~ 3,200 ha Critical Habitat).	1) Prohibit disturbance activities within known 80 ha nest reserves, 2) Increase the amount and quality of suitable habitat through silviculture, 3) Apply BMPs for Managing Spotted Owl Habitat.	1) WHA Exemption is required prior to any falling of trees if the activity is non-compliant with the WHA Order, 2) Apply QEP Questionnaire, 3) Apply the Environmental Mitigation Policy to mitigate impacts, 4) Apply BMP for Managing Spotted Owl Habitat.	http://www.env.gov.bc.ca/wld/documents/wha/SP_OW_2494-510_Order.pdf	48.05

HQOI by Landscape Unit

#	Landscape Unit Name	Current Condition	Best HQOI	HQOI	Area(hectares)
1	Big Silver	43,498.82	65,513.91	45.55	313.78

HQOI by Population Unit

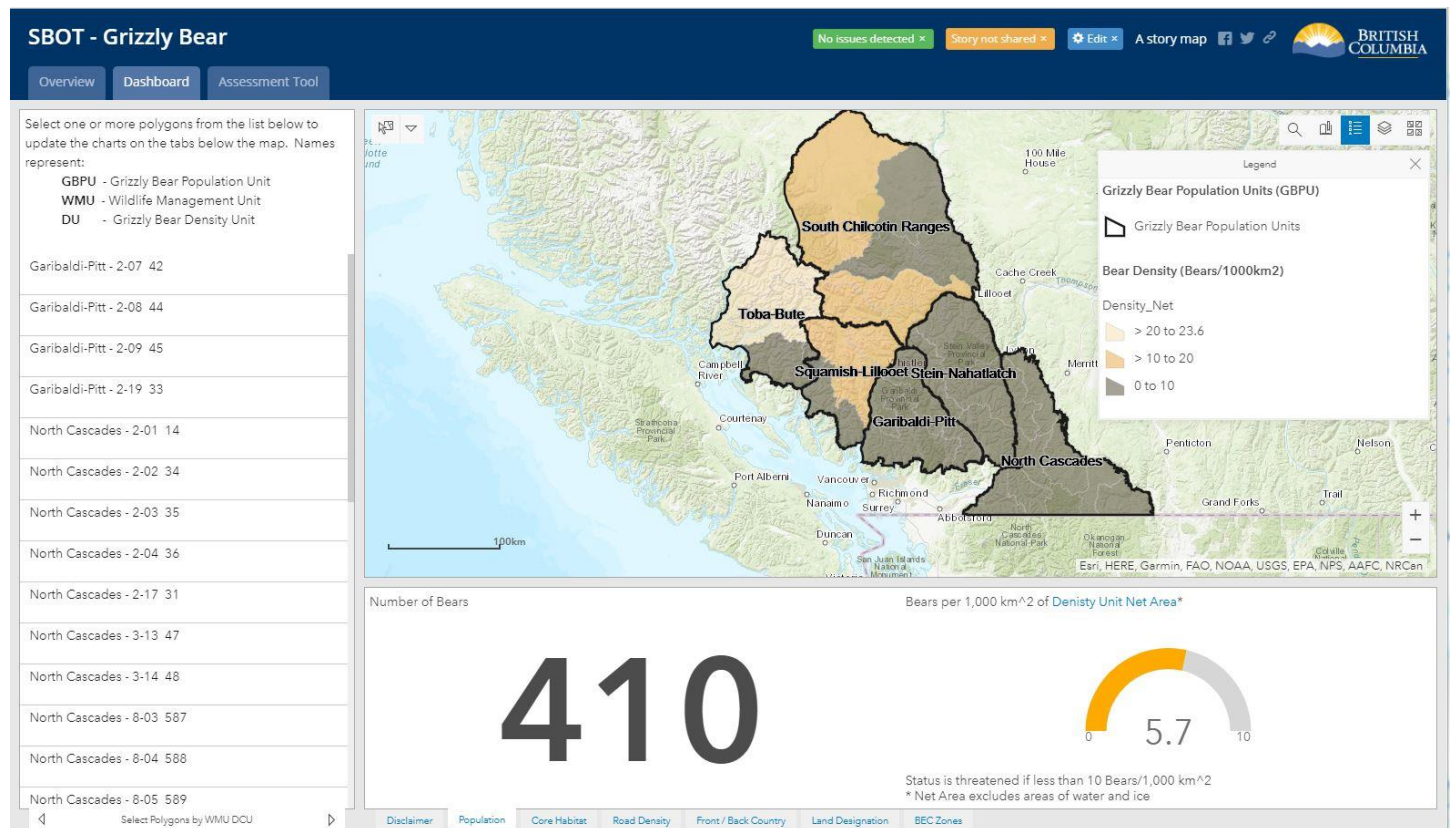
#	Population Unit	Current Condition	Best Condition	HQOI	Area(hectares)
1	Clear 2-503 LTOH	4,792.81	7,282.54	56.48	313.78

[Spotted Owl QEP](#), [Environmental Mitigation Policy and Procedures](#), [Best Management Practices for Managing Spotted Owl Habitat](#), [Spotted Owl Wildlife Habitat Areas](#), [General Wildlife Measures Exemption](#)

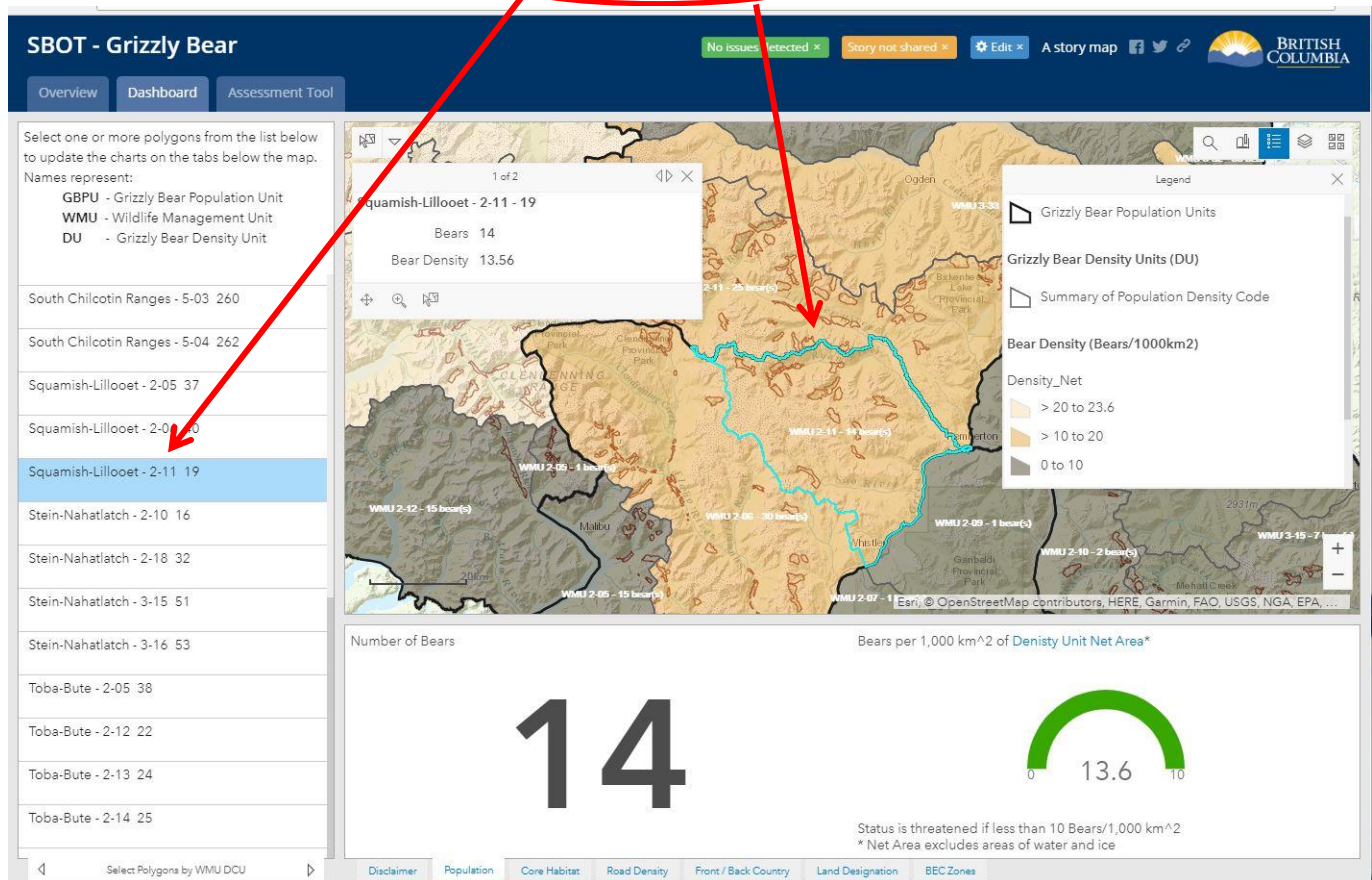
Disclaimer: All information generated from the Assessment Report Tool may be best suited for strategic level decision support and high level land use planning, and may not be suitable to be used for operational level planning, implementation and decisions. Verification of the information provided by the SBOT at the site level is recommended.

4. Other Screenshot Examples of Functionalities

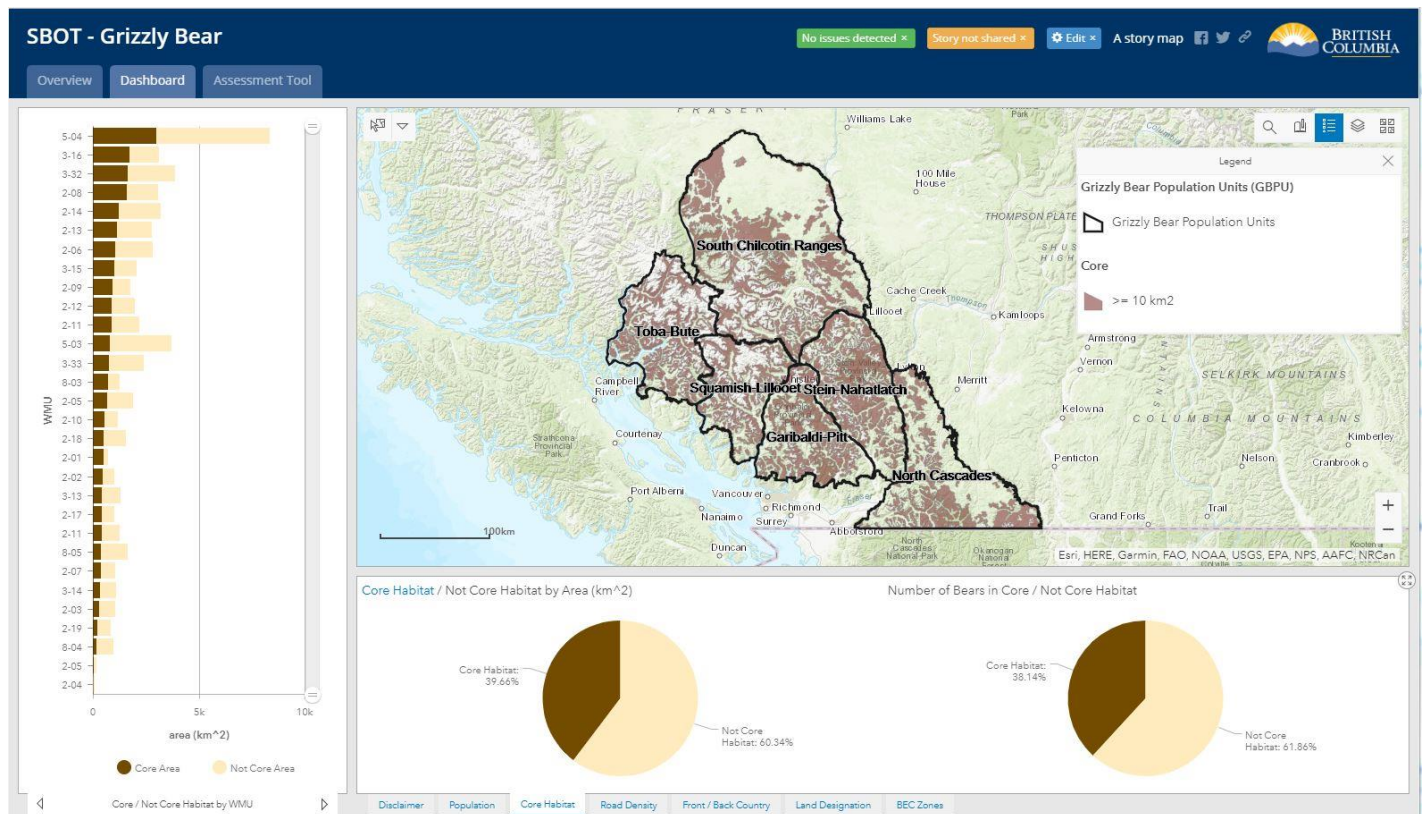
Total Number of Bears and Density of Bears



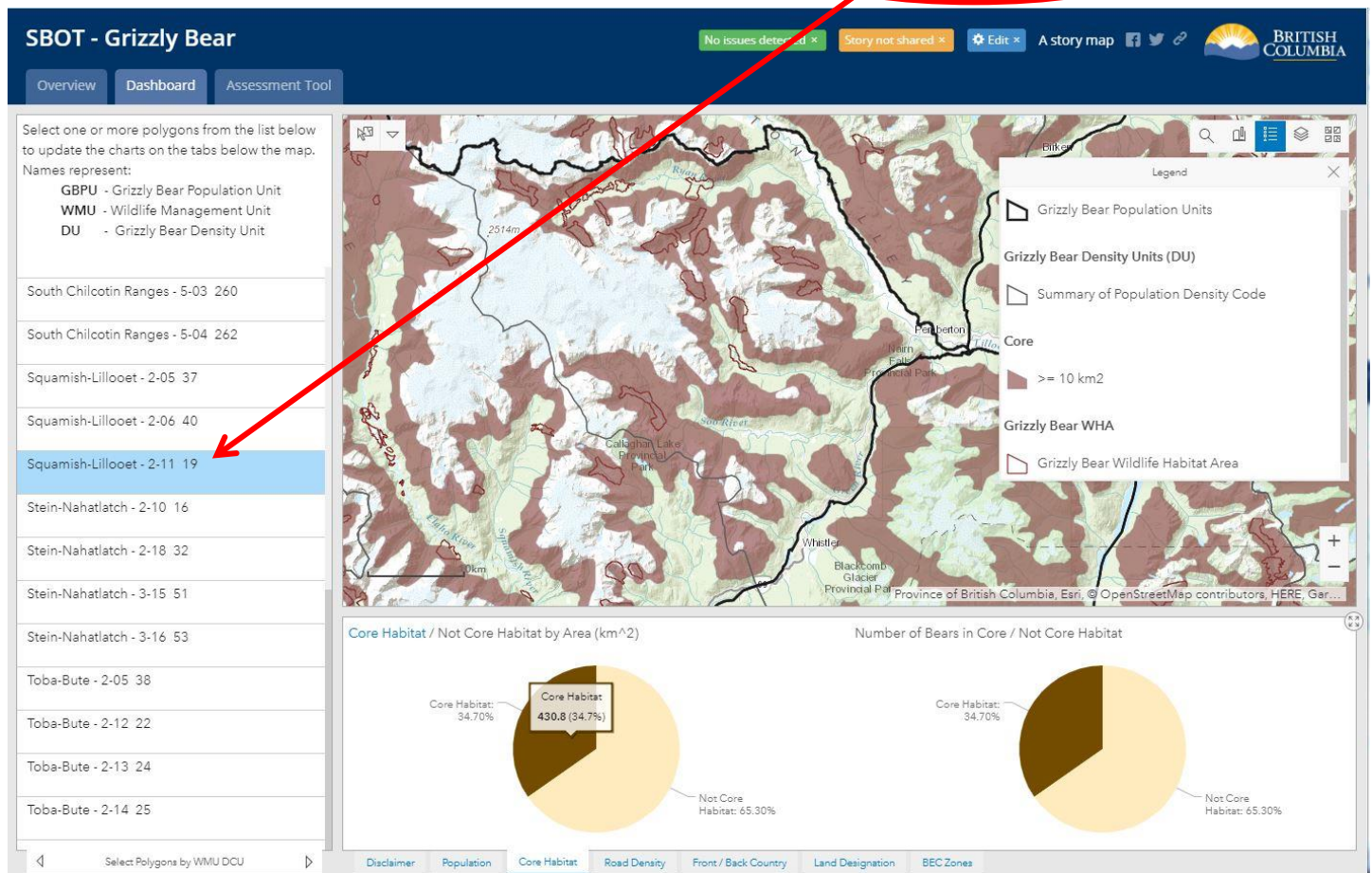
Number of Bears and Density of Bears Selectable by WMU



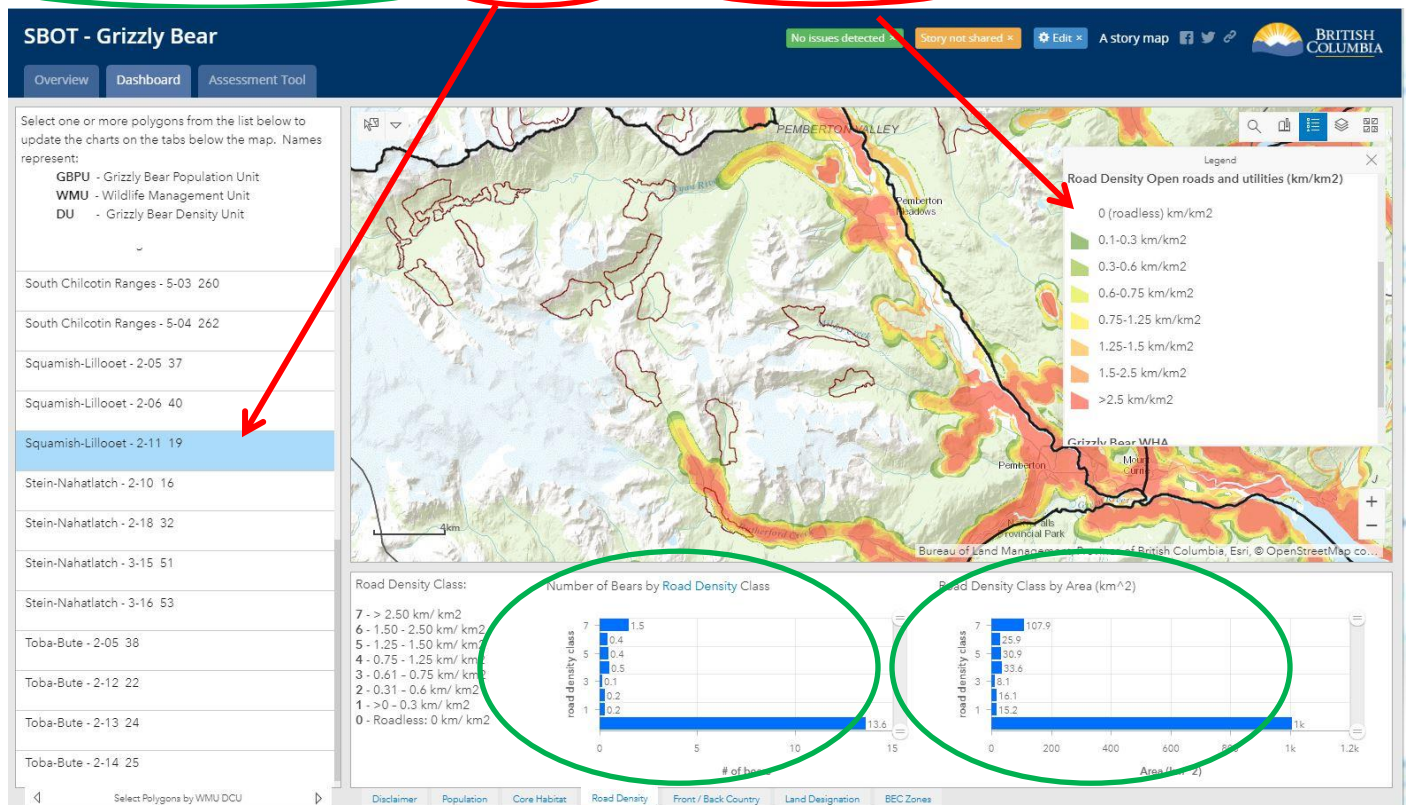
Number of Bears and Area (km²) within Core and Not Core Areas



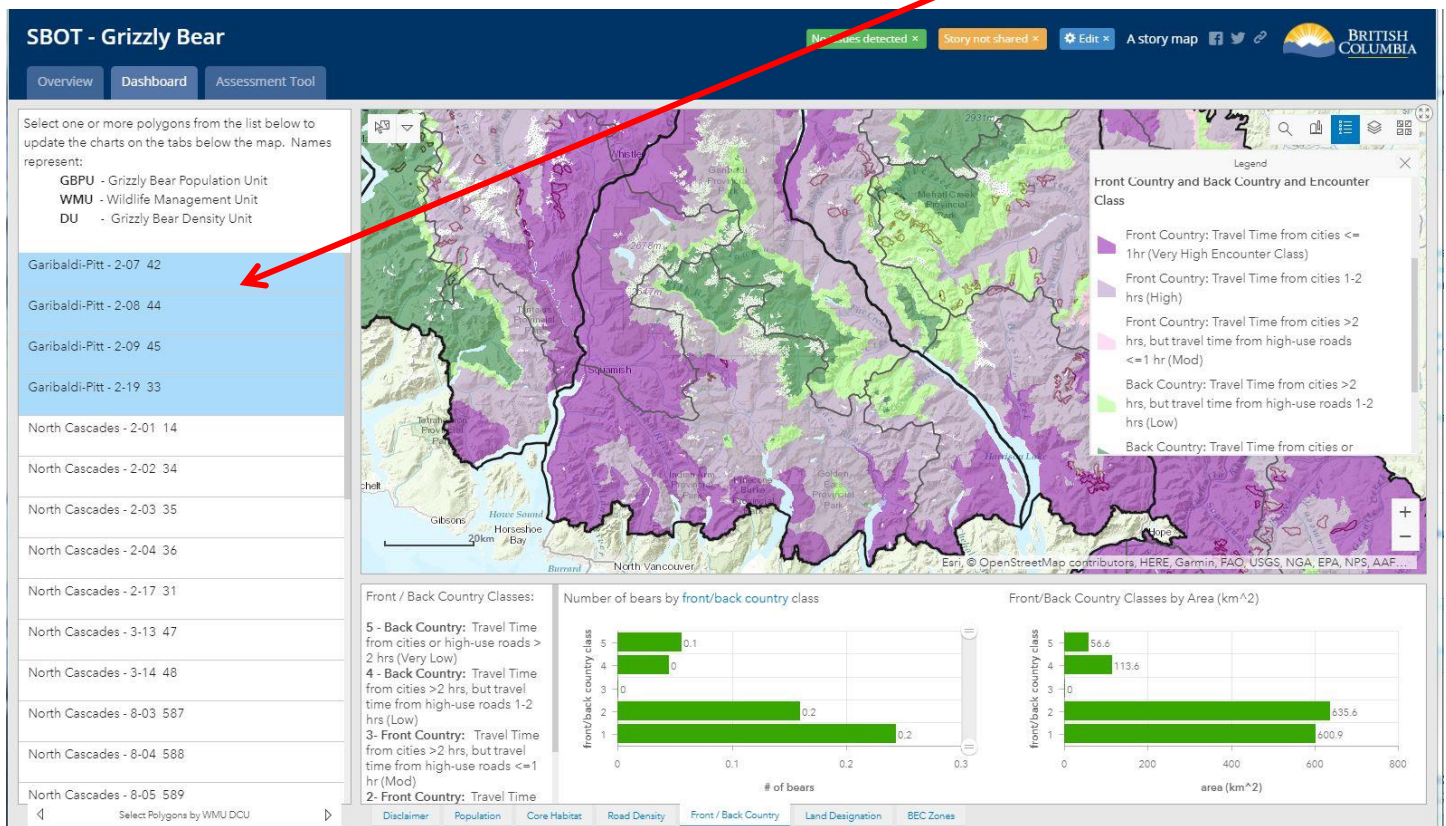
Number of Bears and Area (km²) within Core and Not Core Areas Selectable by WMU



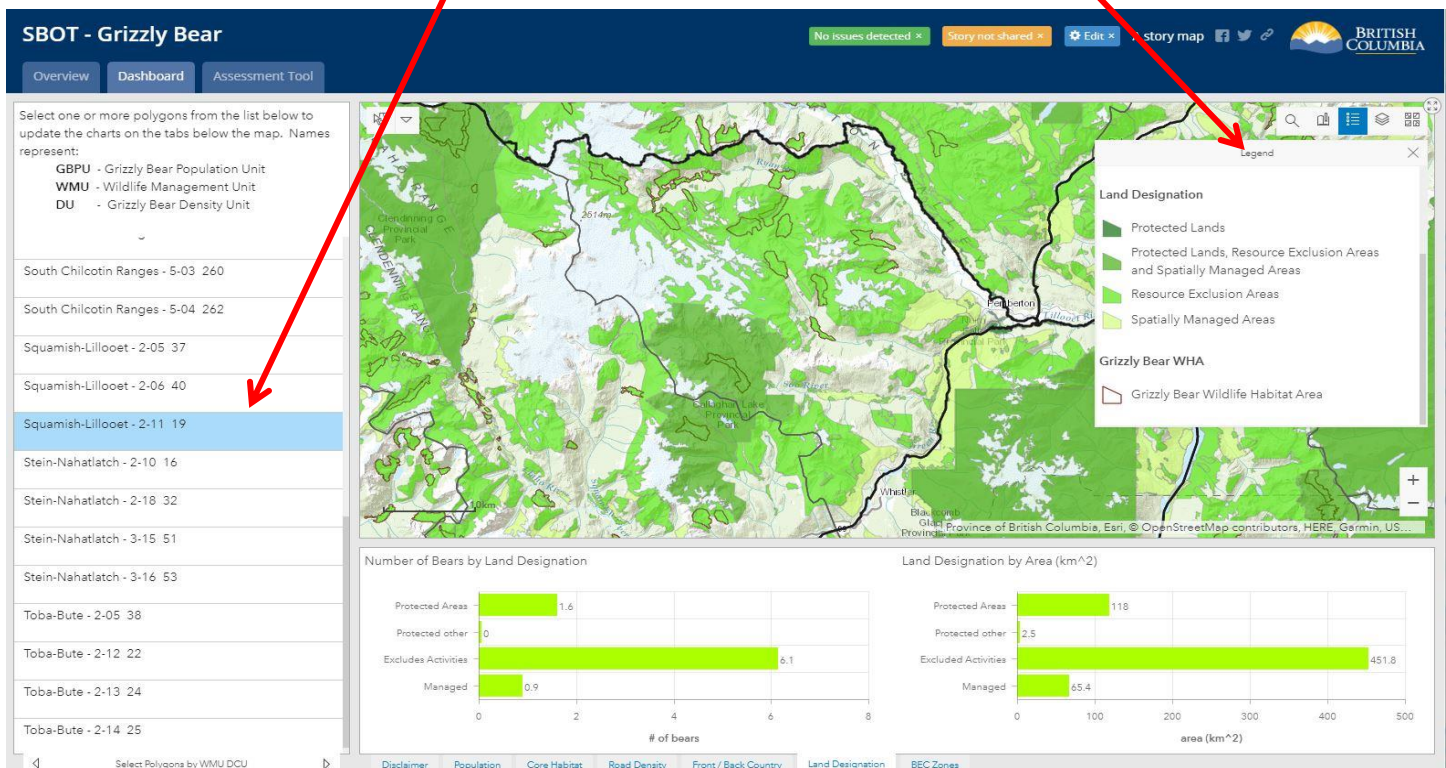
Number of Bears and Area (km²) within WMU by Road Density Class



Number of Bears and Area (km²) by Front and Back Country Class Levels **selectable by WMU and GBPU**



Number of Bears and Area (km²) **within WMU** by **Protected Areas designation**



Number of Bears and Area (km²) within WMU by BEC Zone

