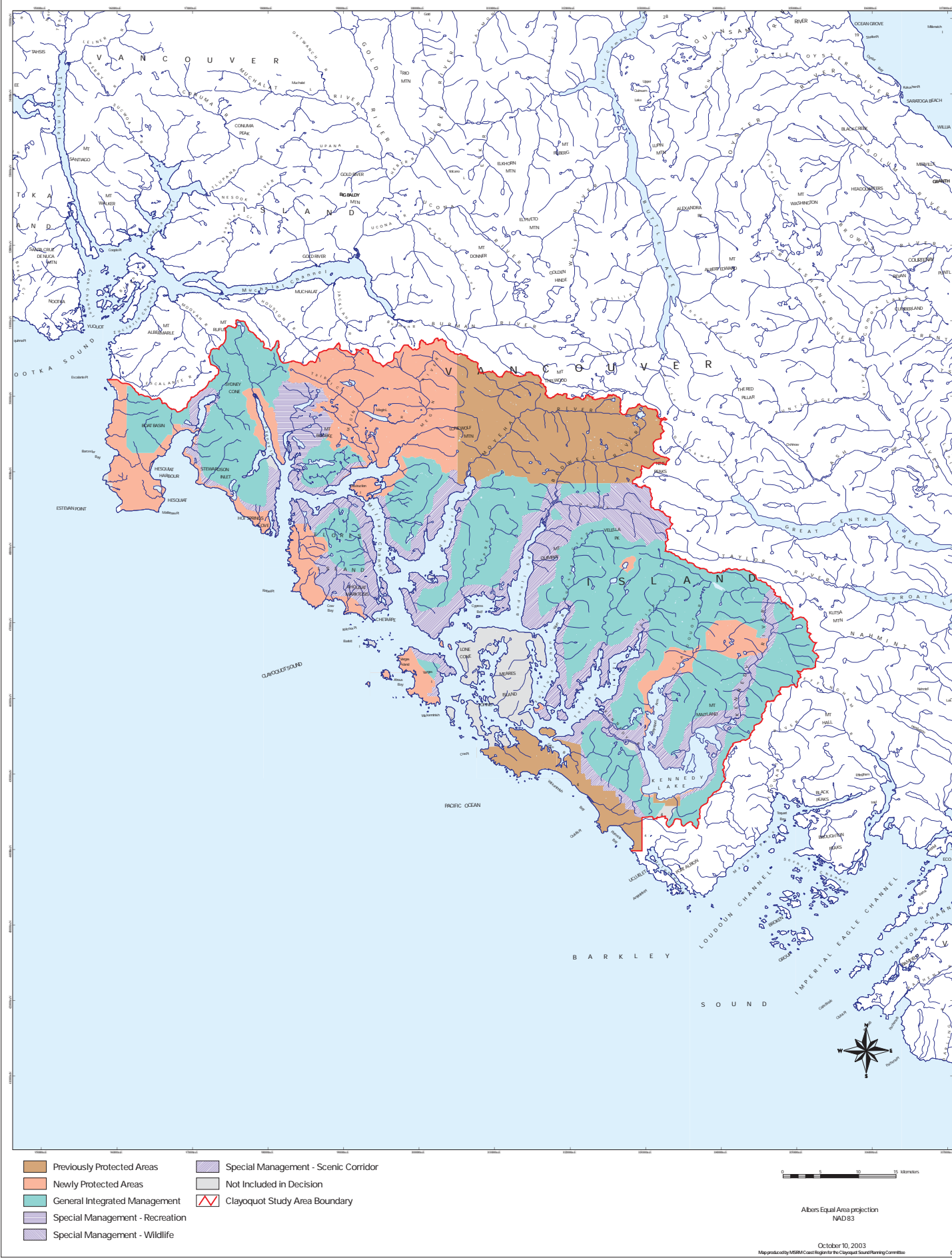


## List of Maps

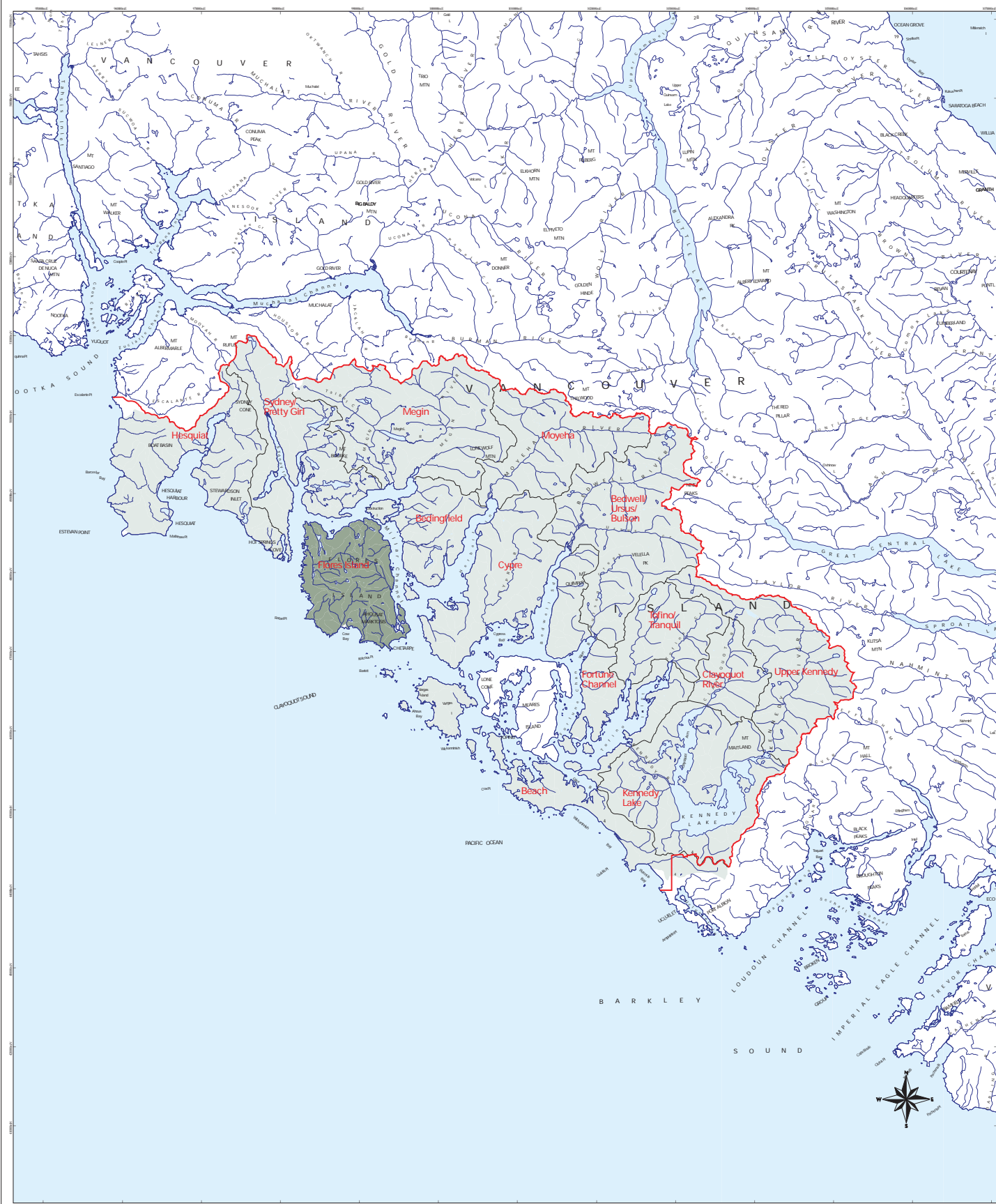
<b>Map 1</b>	<b>Clayoquot Sound Land Use Decision (1993)</b>
<b>Map 2</b>	<b>Flores Island Planning Unit - Clayoquot Sound</b>
<b>Map 3</b>	<b>Flores Island Planning Unit – Topographic Relief</b>
<b>Map 4</b>	<b>Flores Island - Biogeoclimatic Ecosystem Classification (BEC)</b>
<b>Map 5</b>	<b>Flores Island – Forest Age Distribution</b>
<b>Map 6</b>	<b>Flores Island – Land Status</b>
<b>Map 7</b>	<b>Flores Island – Hydoriparian Reserves</b>
<b>Map 8</b>	<b>Flores Island – Terrain Stability Reserves</b>
<b>Map 9</b>	<b>Flores Island – Sensitive Soils Reserves</b>
<b>Map 10</b>	<b>Flores Island – Reserves for Red- and Blue-listed Plant Communities</b>
<b>Map 11</b>	<b>Flores Island – Marbled Murrelet Reserves</b>
<b>Map 12</b>	<b>Flores Island – Current Old Forest and Forest-interior Old Forest</b>
<b>Map 13</b>	<b>Flores Island – Forest-interior Old Forest within Reserve Network</b>
<b>Map 14</b>	<b>Flores Island – Reserves added for Ecosystem Representation</b>
<b>Map 15</b>	<b>Flores Island – Ahousaht Culturally Significant Areas</b>
<b>Map 16</b>	<b>Flores Island – Scenic Management Classes</b>
<b>Map 17</b>	<b>Flores Island – Reserves for Recreation/Tourism Values</b>
<b>Map 18</b>	<b>Flores Island – Reserve Network</b>
<b>Map 19</b>	<b>Flores Island – Scenic Management Classes and Reserve Network</b>
<b>Map 20</b>	<b>Flores Island – Reserves and Harvestable Areas, including Special Management Zones</b>
<b>Map 21</b>	<b>Flores Island – Watershed Rate of Cut Limits</b>

# Clayoquot Sound Land Use Decision (1993)



Albers Equal Area projection  
NAD 83

# Flores Island Planning Unit Clayoquot Sound



- Clayoquot Sound Study Area
- Planning Unit
- Clayoquot Study Area Boundary

0 5 10 Kilometers

Albers Equal Area projection  
NAD 83



# Flores Island Planning Unit Topographic Relief



- TRIM Streams
- Planning Unit Area
- Paved Road
- Gravel Road
- Trail
- Bridge

0 1 2 Kilometers

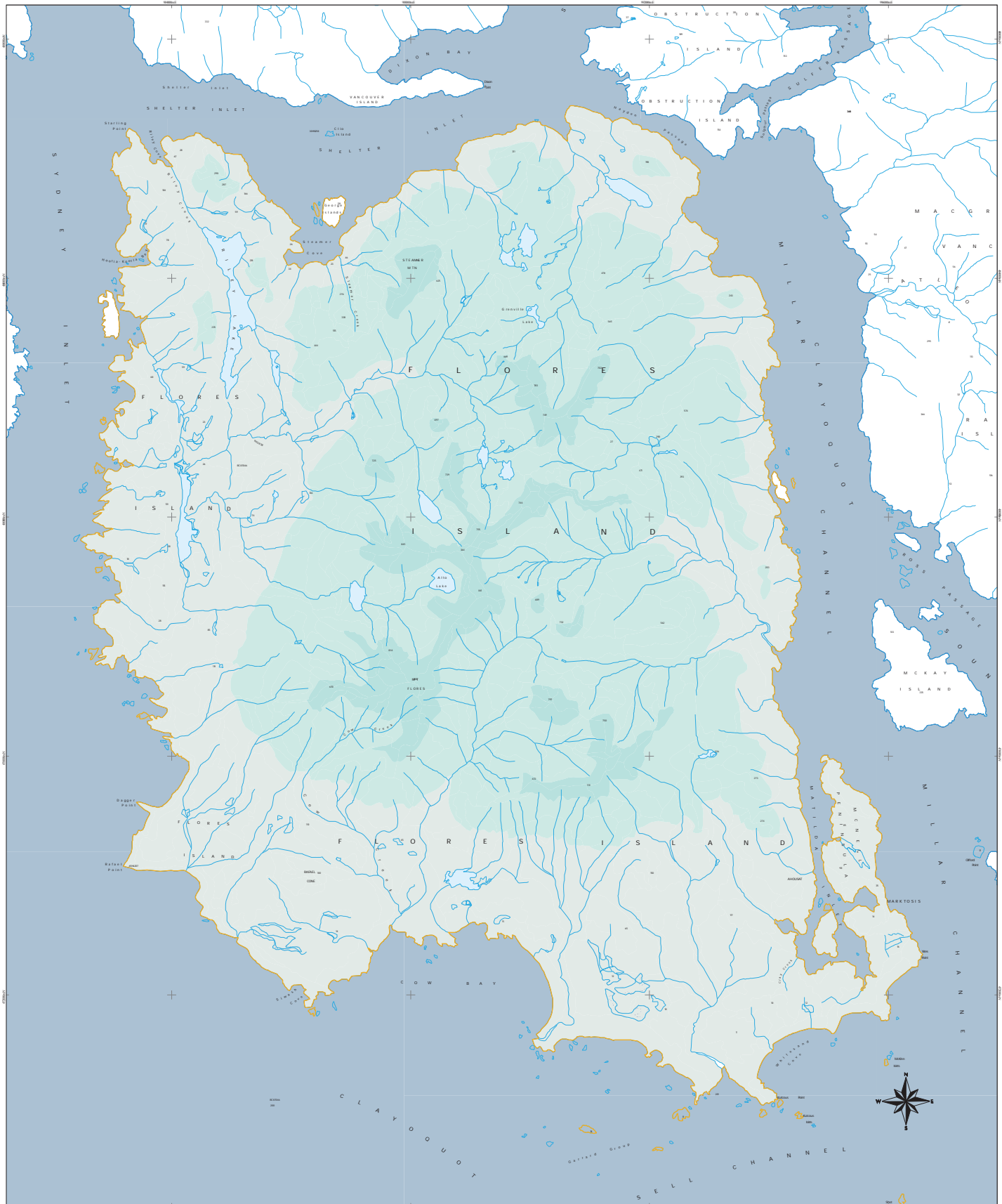
Albers Equal Area projection  
NAD83

October 10, 2003

Map produced by MNRM Coast Region for the Clayoquot Sound Planning Committee



# Flores Island Planning Unit Biogeoclimatic Ecosystem Classification (BEC)



- |        |              |                    |
|--------|--------------|--------------------|
| CWHvh1 | AT           | Bridge             |
| CWHvm1 | TRIM streams | Planning Unit Area |
| CWHvm2 | Paved Road   |                    |
| MHhml  | Gravel Road  |                    |
| MHhmp1 | Trail        |                    |

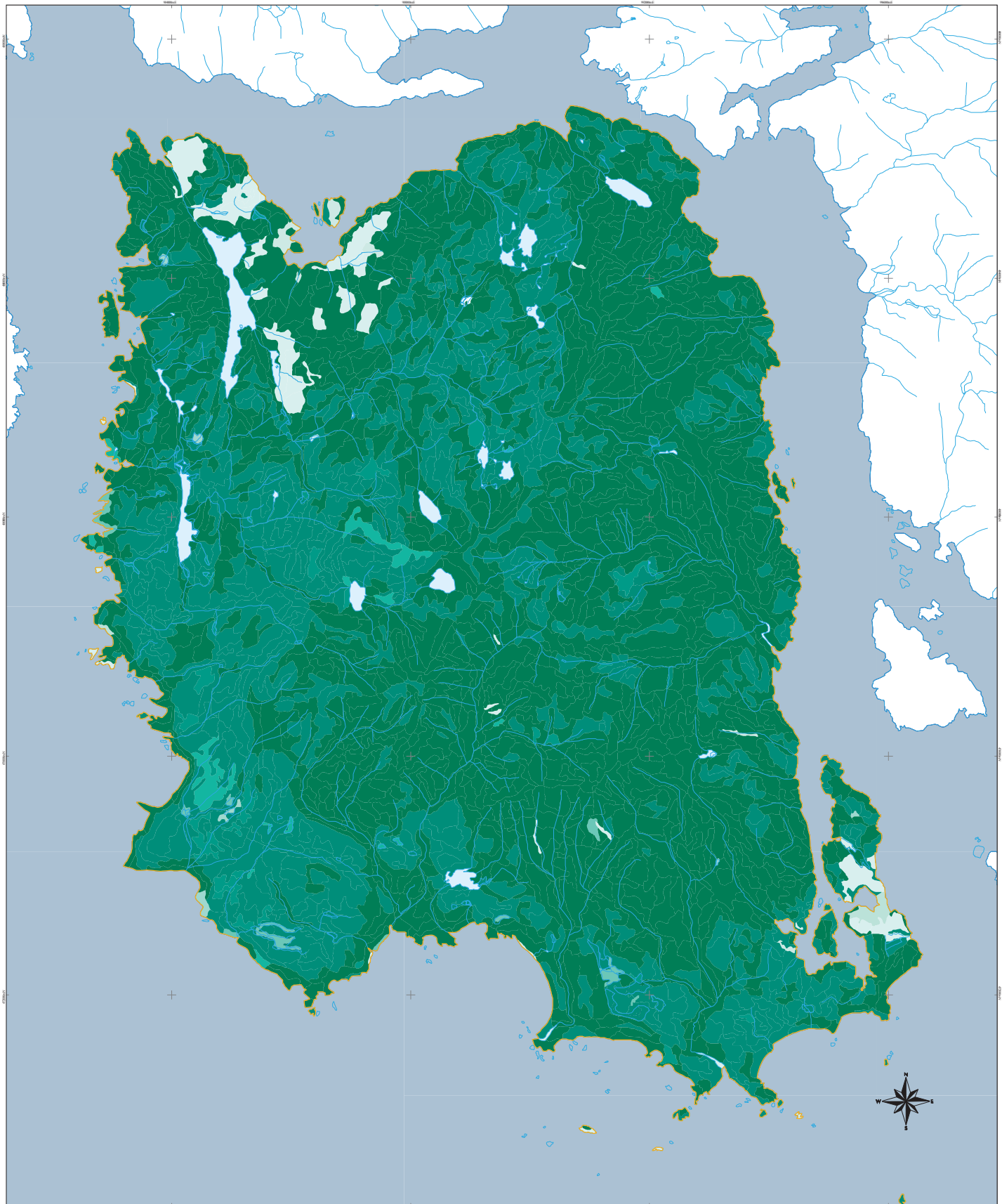
0 1 2 3 Kilometers

Albers Equal Area projection  
NAD83

October 10, 2003

Map produced by MNR/MNR Region for the Clayport Sound Planning Committee

# Flores Island Planning Unit Forest Age Distribution



- |                              |                               |                    |
|------------------------------|-------------------------------|--------------------|
| Age Class 1 (1 - 20 years)   | Age Class 6 (101 - 120 years) | Paved Road         |
| Age Class 2 (21 - 40 years)  | Age Class 7 (121 - 140 years) | Gravel Road        |
| Age Class 3 (41 - 60 years)  | Age Class 8 (141 - 250 years) | Trail              |
| Age Class 4 (61 - 80 years)  | Age Class 9 (251+ years)      | Bridge             |
| Age Class 5 (81 - 100 years) | TRIM streams                  | Planning Unit Area |

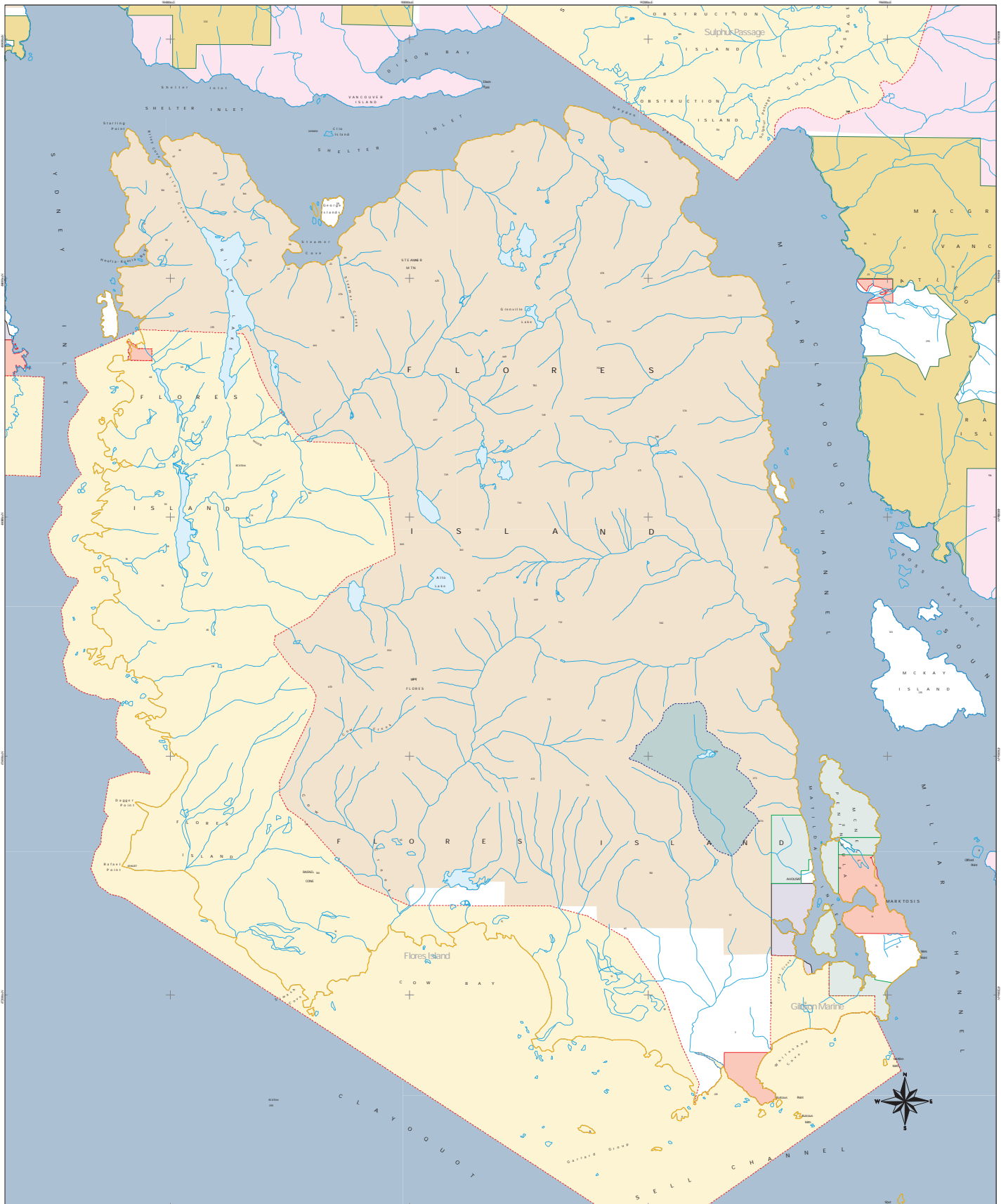
0 1 2 3 Kilometers

Albers Equal Area projection  
NAD 83

October 10, 2003

Map produced by MMRM Coast Region for the Clayport Sound Planning Committee

# Flores Island Planning Unit Land Status



- |                 |                      |                    |
|-----------------|----------------------|--------------------|
| TFL 54 Interior | Private Land         | Paved Road         |
| TFL 57 Isaak    | Indian Reserves      | Gravel Road        |
| Woodlots        | Parks                | Trail              |
| Timber Licence  | Community Watersheds | Bridge             |
| Uncharted       | TRIM streams         | Planning Unit Area |

Data Sources: Parks (Protected Areas) - Land Use Coordination Office  
 Indian Reserves - Surveyor General Branch (1995)  
 Private Land - Surveyor General Branch (1995)  
 Community Watersheds - Ministry of Sustainable Resource Management  
 Woodlots - Ministry of Forests

Warning: The data depicted on this map was compiled from different sources and base mapping. Boundaries will not align precisely. Indian Reserves and Private Land data was compiled at a scale of 1:250,000. Private land databases not include areas less than 16 hectares in size. Woodlot locations are not exact.

0 1 2 Kilometers

Albers Equal Area projection  
NAD 83

October 10, 2003  
Map produced by MMCM Coast Region for the Clayport Sound Planning Committee



# Flores Island Planning Unit Hydroriparian Reserves



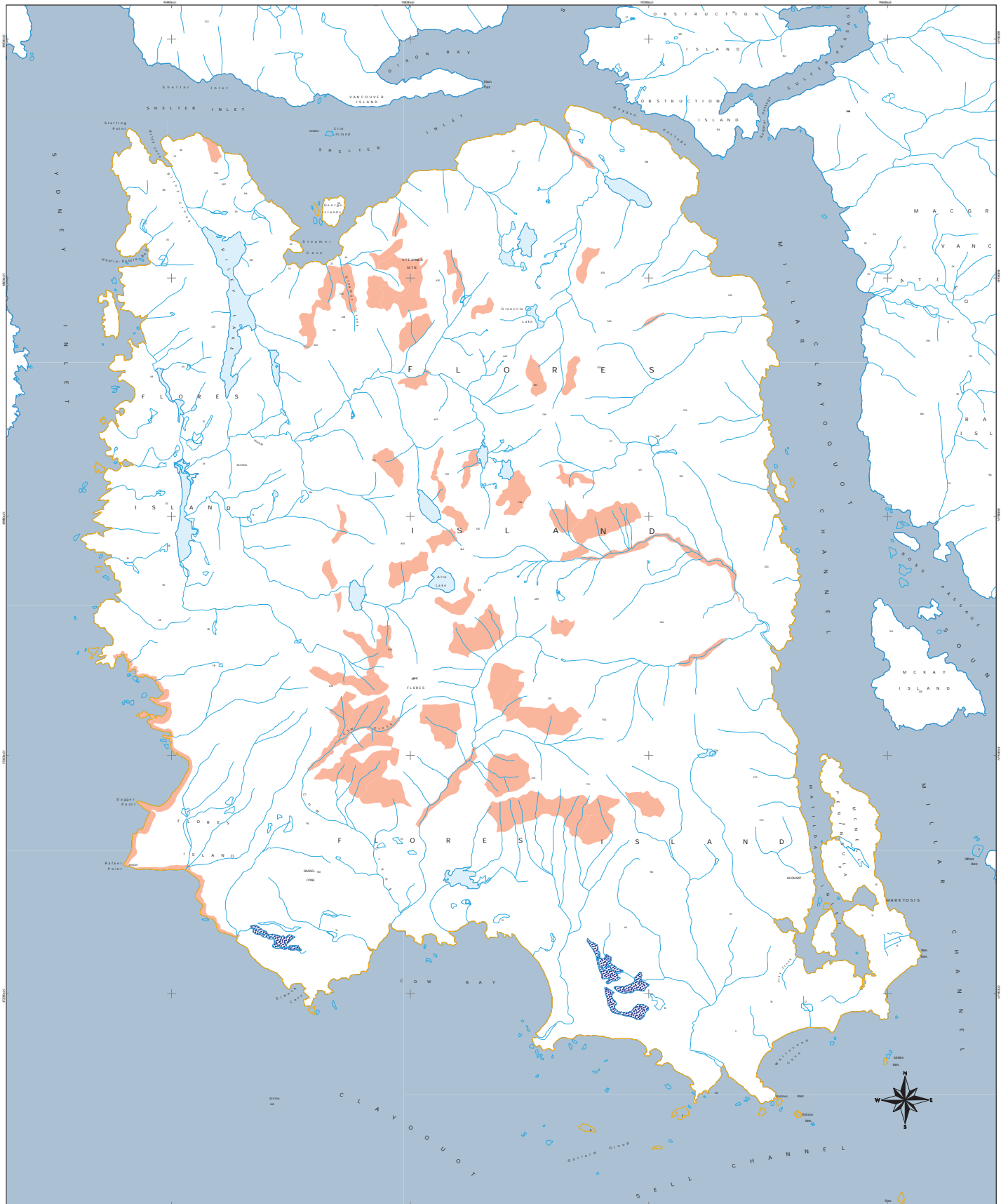
- |  |   |   |
|--|---|---|
|  |  |  |
|  |  |  |
|  |  |  |
|  |  |  |
|  |  |   |

0 1 2 3 Kilometers

Albers Equal Area projection  
NAD83

October 10, 2003  
Map produced by MMRC Coast Region for the Clayport Sound Planning Committee

# Flores Island Planning Unit Reserves for Terrain Stability



- Slope Class V
- TRIM streams
- Paved Road
- Gravel Road
- Trail
- Bridge
- Planning Unit Area

0 1 2 3 Kilometers

Albers Equal Area projection  
NAD83

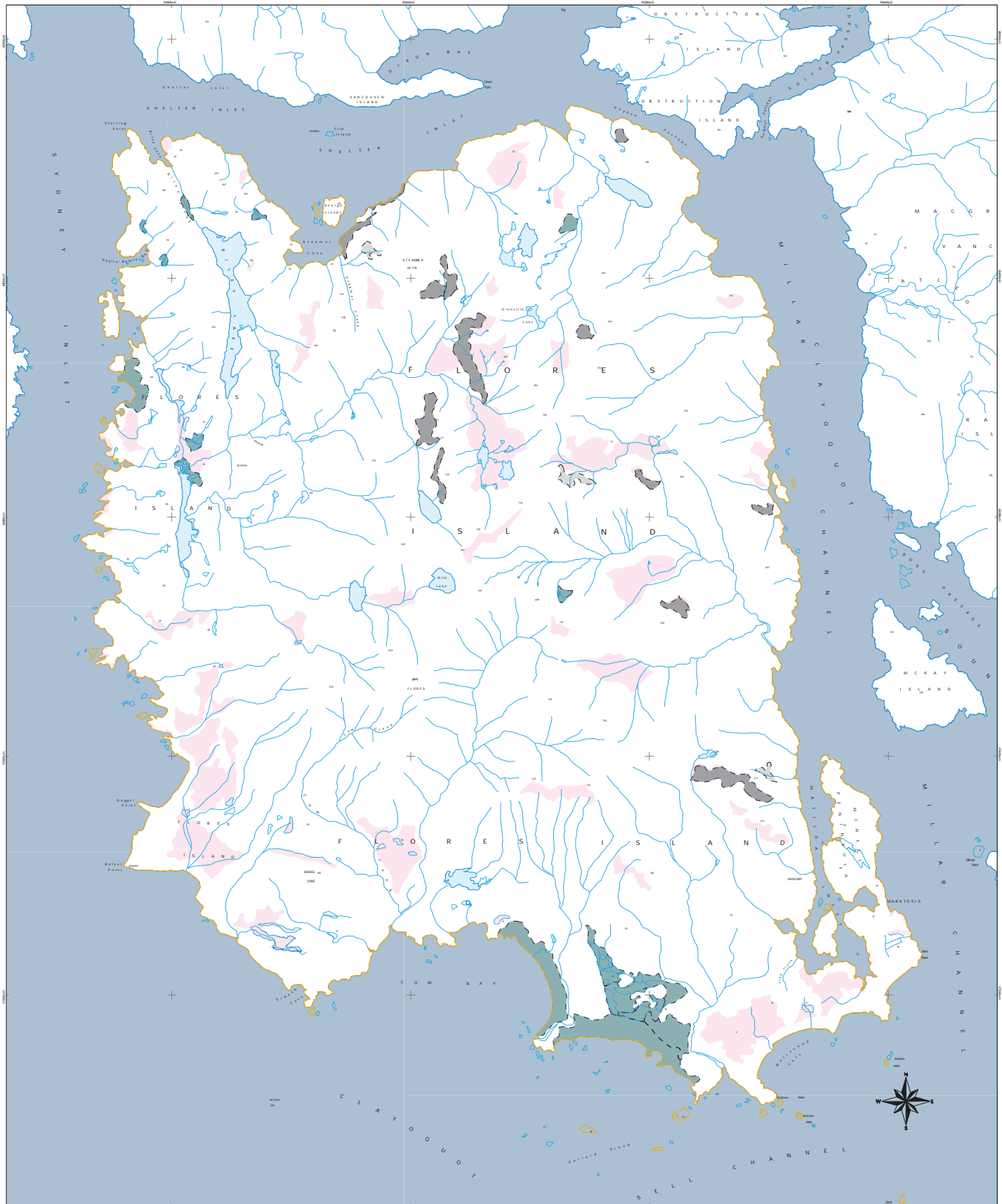
October 10, 2003

Map produced by MMCM Coast Region for the Clayport Sound Planning Committee

Inventory Done in Accordance with RIC Standards

Terrain Inventory 1996-1998 Madrona Consultants

# Flores Island Planning Unit Reserves for Sensitive Soils



- |  |                   |                    |
|--|-------------------|--------------------|
| Bedrock Terrain                                | Poor Growing Site | Bridge             |
| Shallow Organic Materials                      | TRIM streams      | Planning Unit Area |
| Organic Soil                                   | Paved Road        |                    |
| Blocky and Boulderly Colluvial Material        | Gravel Road       |                    |
| Active Colluvial Cones or Fans & Alluvial Fans | Trail             |                    |

0 1 2 Kilometers

Albers Equal Area projection  
NAD83

October 10, 2003  
Map produced by MMRM Coast Region for the Clayport Sound Planning Committee

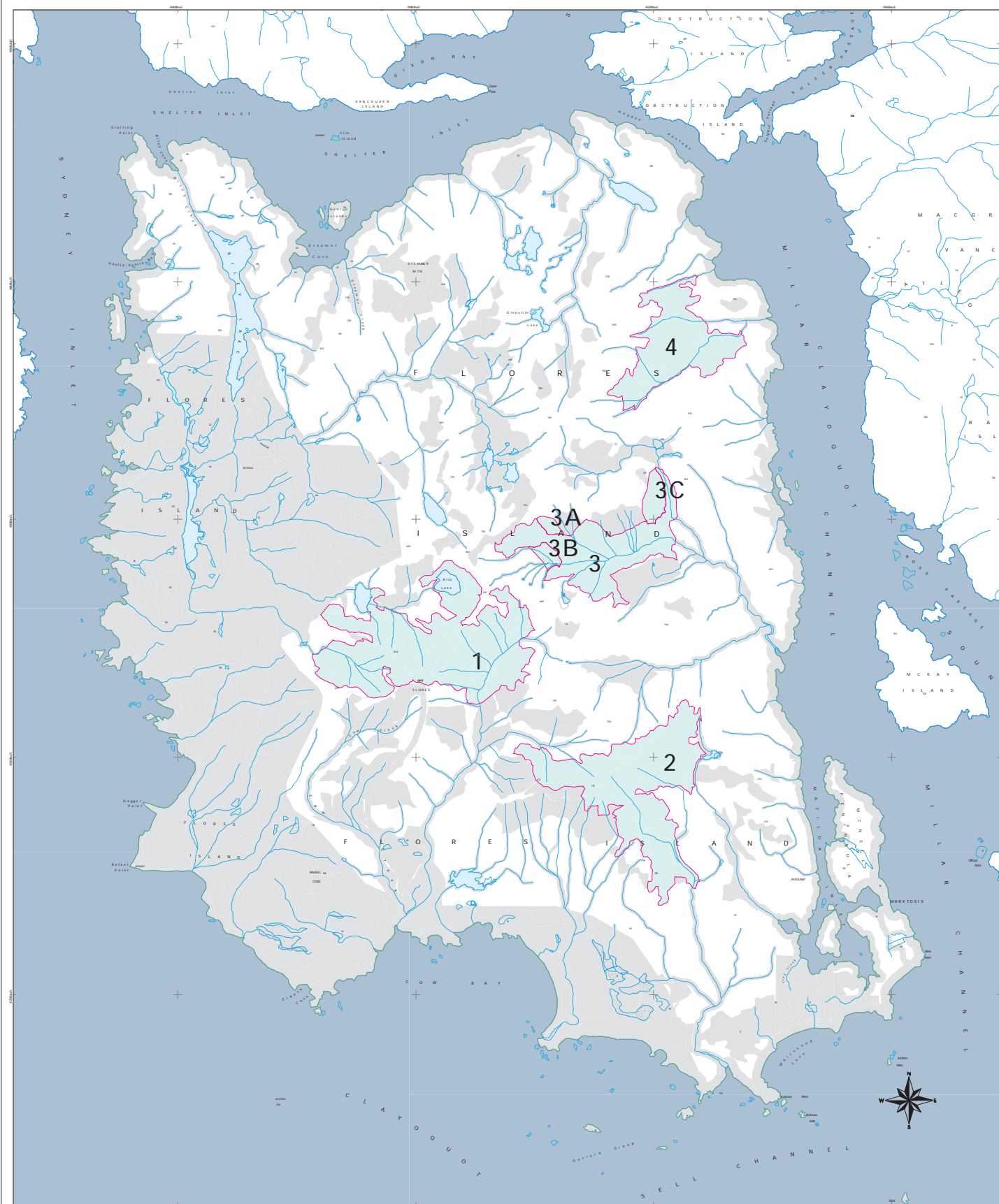


# Flores Island Planning Unit

## Reserves for Red- and Blue-listed Plant Communities



# Flores Island Planning Unit Reserves for Marbled Murrelets

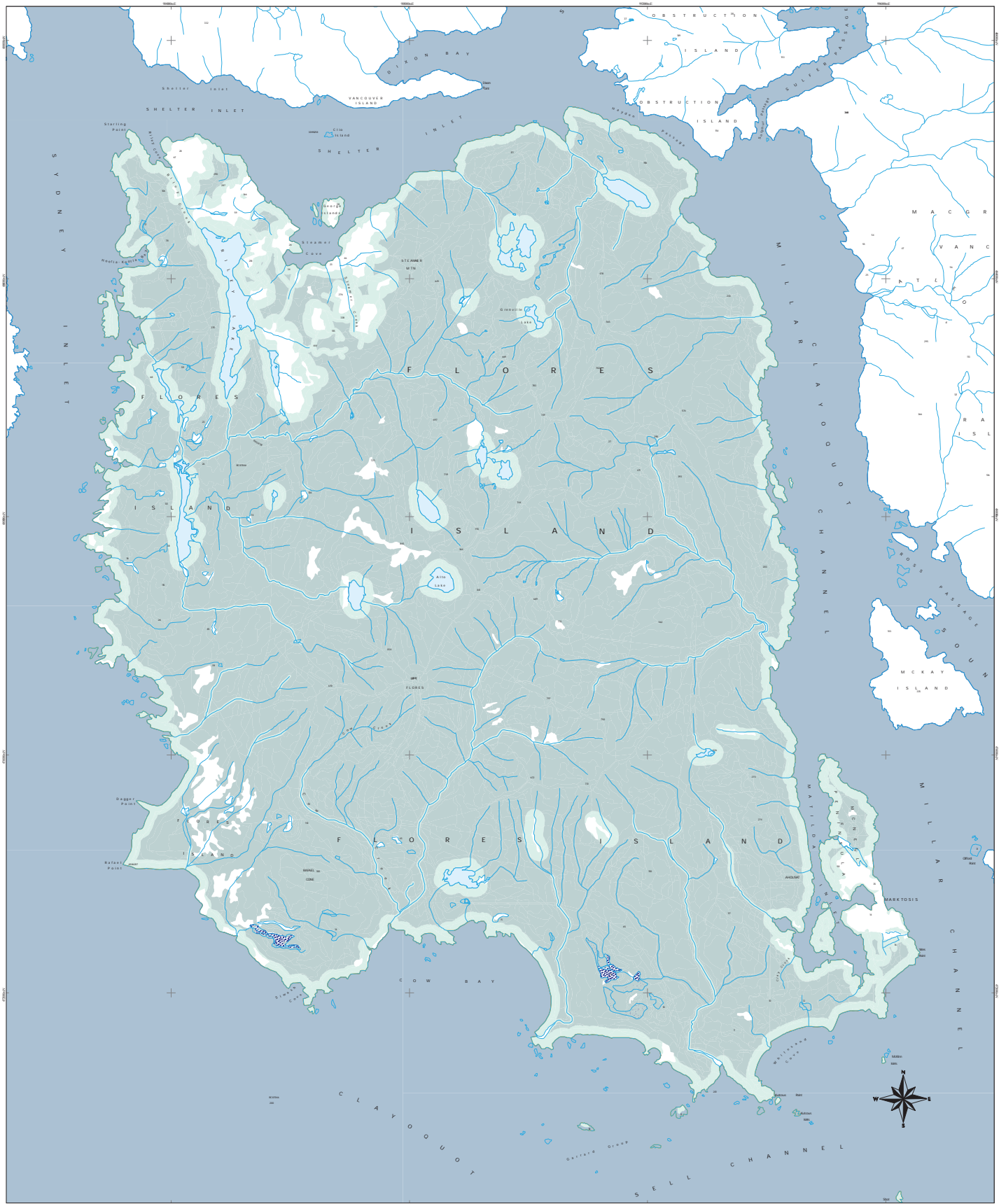


- |                                   |                    |
|-----------------------------------|--------------------|
| Marbled Murrelet Reserves         | Gravel Road        |
| Existing Reserve Network          | Trail              |
| Marbled Murrelet Reserve Boundary | Bridge             |
| TRIM streams                      | Planning Unit Area |
| Paved Road                        |                    |

0 1 2 3 Kilometers

Albers Equal Area projection  
NAD83

# Flores Island Planning Unit Current Old Growth and Interior Old Growth Forest



- |                                       |                    |
|---------------------------------------|--------------------|
| Old Growth Forest (age class 8 and 9) | Trail              |
| Interior Old Growth Forest            | Bridge             |
| TRIM streams                          | Planning Unit Area |
| Paved Road                            |                    |
| Gravel Road                           |                    |

0 1 2 Kilometers

Albers Equal Area projection  
NAD83

October 10, 2003  
Map produced by MNRM Coast Region for the Clayport Sound Planning Committee



# Flores Island Planning Unit Old Growth and Interior Old Growth in Reserve Network



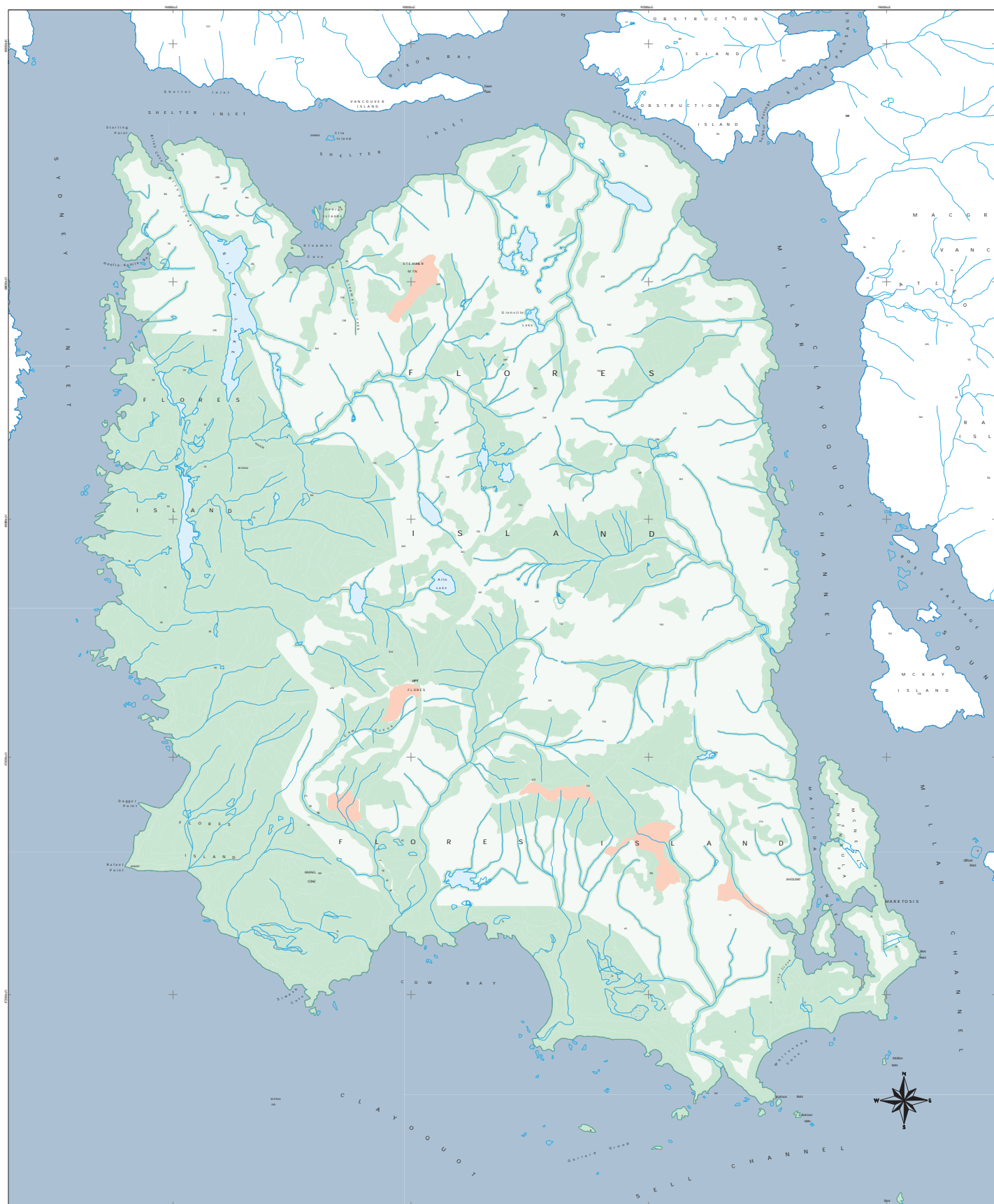
- |   |                    |
|---|--------------------|
| Old Growth Forest in Reserve Network          | Gravel Road        |
| Interior Old Growth Forest in Reserve Network | Trail              |
| Reserve Network                               | Bridge             |
| TRIM streams                                  | Planning Unit Area |
| Paved Road                                    |                    |

0 1 2 Kilometers

Albers Equal Area projection  
NAD83

October 10, 2003  
Map produced by MNRM Coast Region for the Clayport Sound Planning Committee

# Flores Island Planning Unit Reserves added for Ecosystem Representation



- |  |  |  |                    |
|--|--|--|--------------------|
|  | Reserves to Complete Ecosystem Representation                      |  | Trail              |
|  | Reserves for Representative Ecosystems from Other Reserve Criteria |  | Bridge             |
|  | TRIM streams   |  | Planning Unit Area |
|  | Paved Road   |  |                    |
|  | Gravel Road  |  |                    |

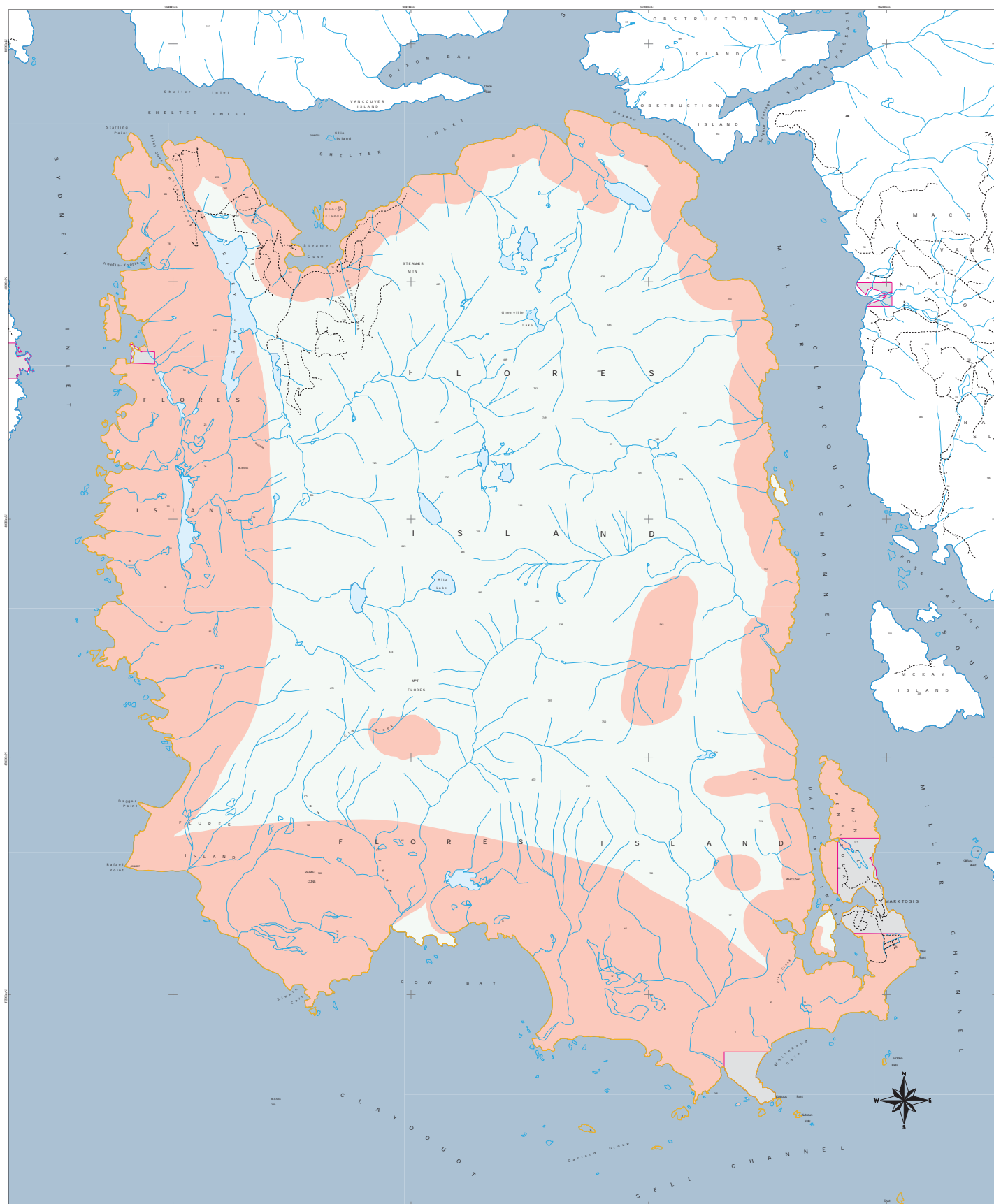
0 1 2 3 Kilometers

Albers Equal Area projection  
NAD83

October 10, 2003

Map produced by MNRM Coast Region for the Clayoquot Sound Planning Committee

# Flores Island Planning Unit Ahousaht Culturally Significant Areas



- |  |                              |  |                    |
|--|------------------------------|--|--------------------|
|  | Culturally Significant Areas |  | Trail              |
|  | Indian Reserves              |  | Bridge             |
|  | TRIM Streams                 |  | Planning Unit Area |
|  | Paved Road                   |  |                    |
|  | Gravel Road                  |  |                    |

Culturally Sensitive Areas compiled by the Ahousaht First Nation and Coastal Resource Mapping

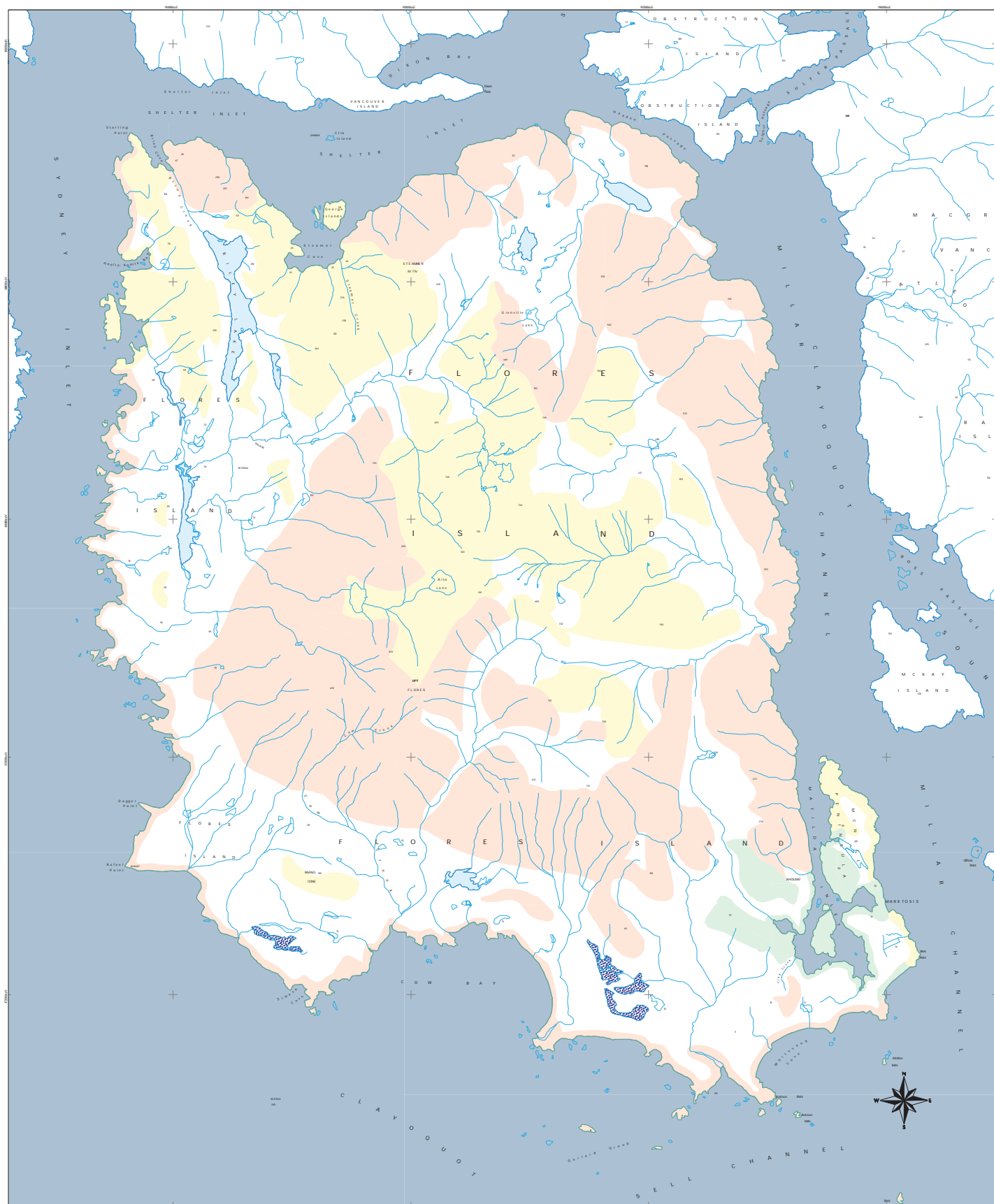
0 1 2 Kilometers

Albers Equal Area projection  
NAD83

October 10, 2003  
Map produced by MRM Coast Region for the Clayoquot Sound Planning Committee



# Flores Island Planning Unit Scenic Class Objectives



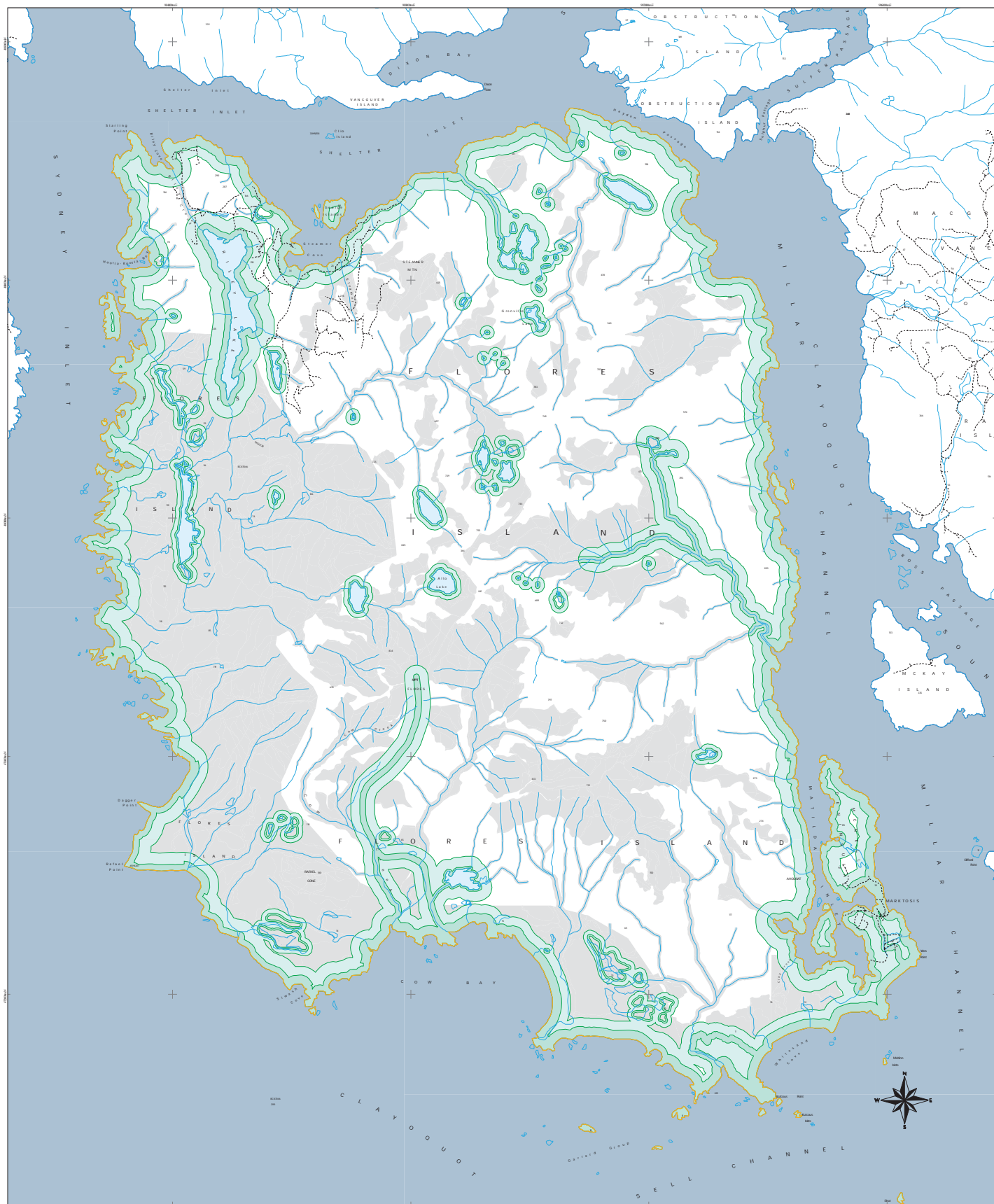
- |                        |                    |
|------------------------|--------------------|
| Small-scale Alteration | Gravel Road        |
| Minimal Alteration     | Trail              |
| Natural Appearing      | Bridge             |
| TRIM streams           | Planning Unit Area |
| Paved Road             |                    |

0 1 2 Kilometers

Albers Equal Area projection  
NAD83

October 10, 2003  
Map produced by MRM Coast Region for the Clayport Sound Planning Committee

# Flores Island Planning Unit Reserves for Recreation/Tourism Values



- |  |                          |  |                    |
|--|--------------------------|--|--------------------|
|  | Reserve                  |  | Paved Road         |
|  | Management Zone          |  | Gravel Road        |
|  | Existing Reserve Network |  | Trail              |
|  | Recreation Polygons      |  | Bridge             |
|  | TRIM streams             |  | Planning Unit Area |

0 1 2 3 Kilometers

Albers Equal Area projection  
NAD83

October 10, 2003

Map produced by MRM Coast Region for the Clayport Sound Planning Committee

# Flores Island Planning Unit Reserve Network



- Reserve Polygons
- Bridge
- TRIM streams
- Planning Unit Area
- Paved Road
- Gravel Road
- Trail

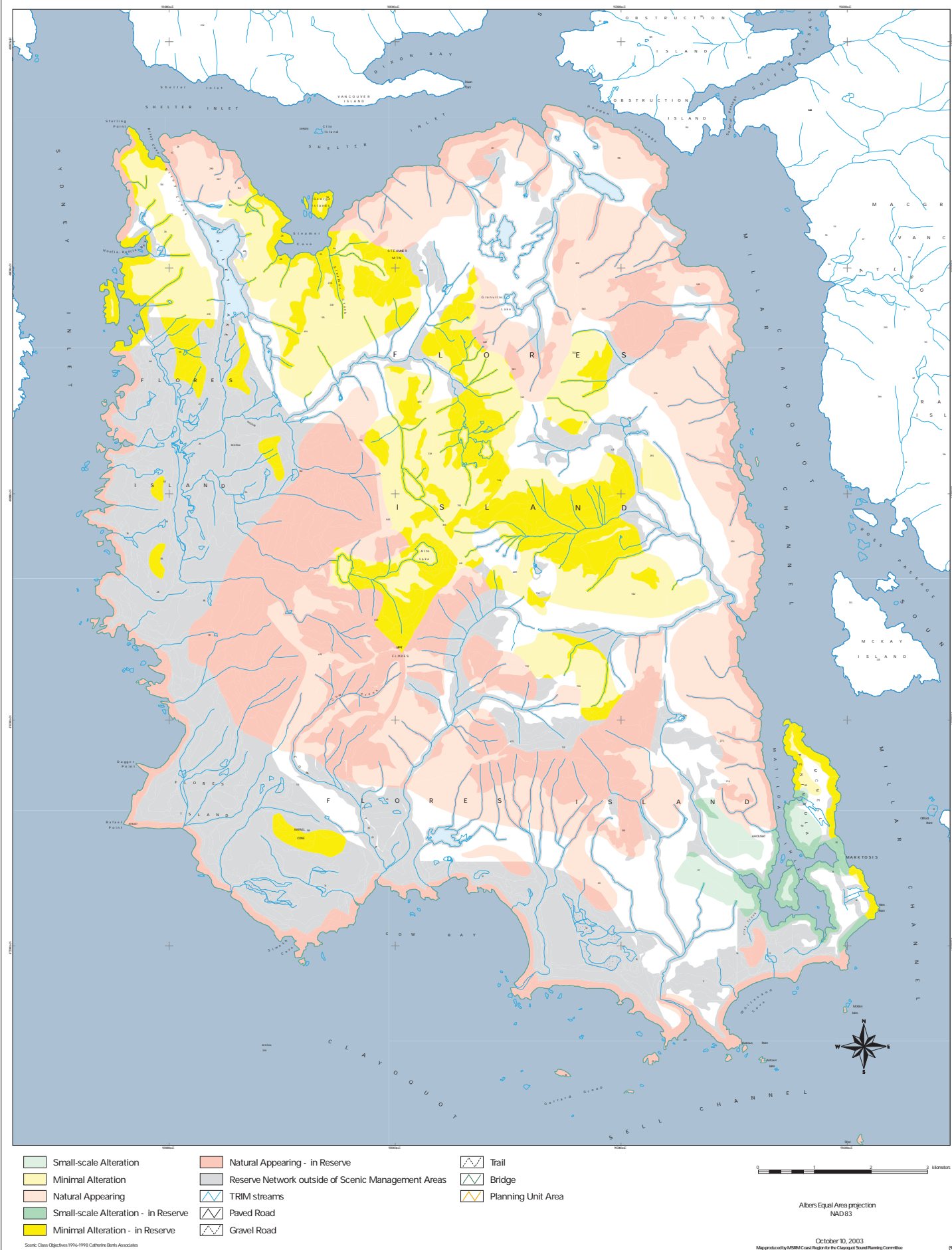
Note: Reserves established as per Clayquot Sound Scientific Panel Recommendations (See Recommendation R7.16 of Report 5)

0 1 2 Kilometers

Albers Equal Area projection  
NAD83

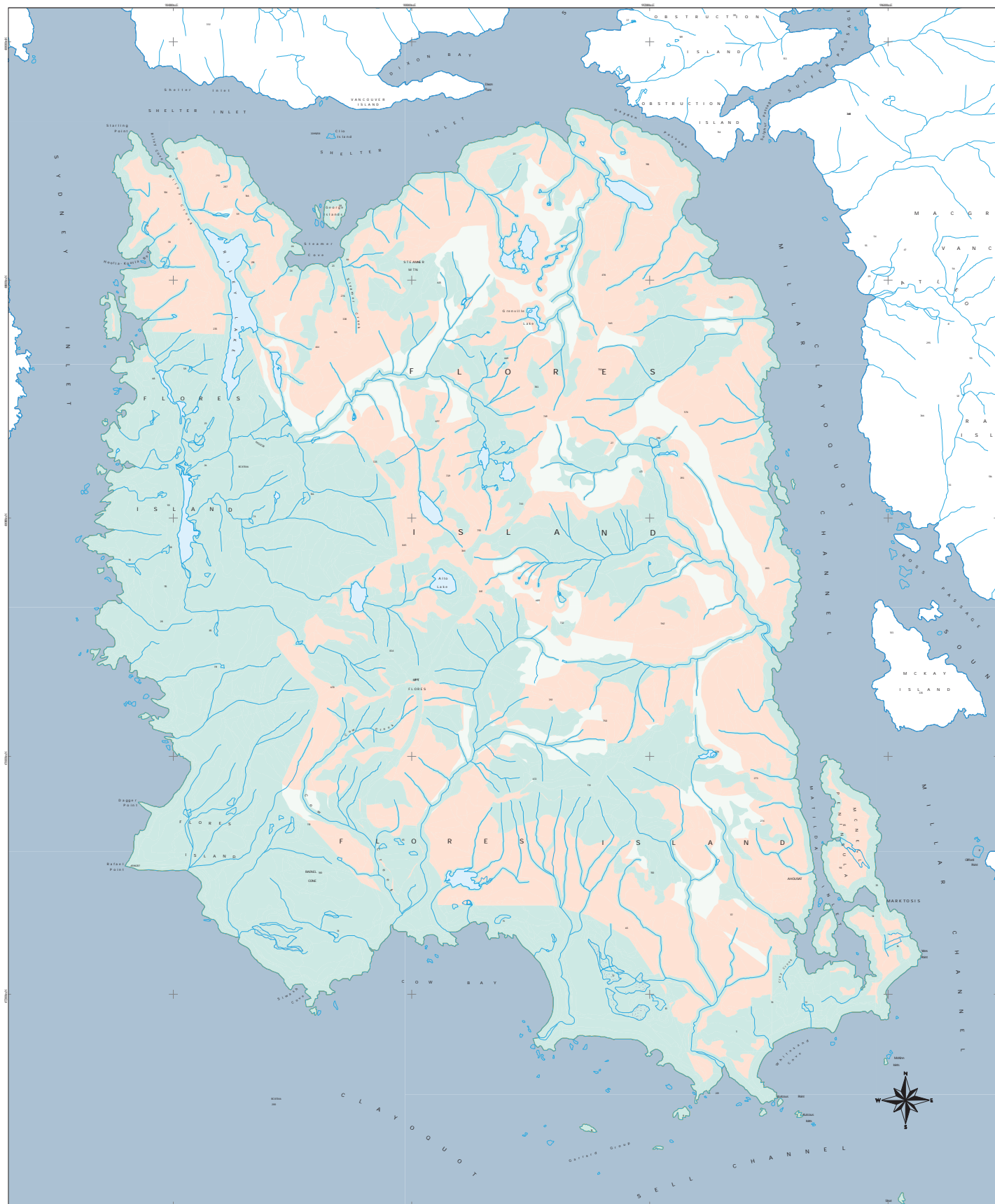
October 10, 2003  
Map produced by MRM Coast Region for the Clayquot Sound Planning Committee

# Flores Island Planning Unit Scenic Class Objectives and Reserve Network





# Flores Island Planning Unit Reserves and Harvestable Areas, incl. Special Management Zones



- Reserve Polygons
- Special Management Zones within Harvestable Areas
- Harvestable Areas
- TRIM streams
- Paved Road
- Gravel Road
- Trail
- Bridge
- Planning Unit Area

Note: Reserves established as per Clayquot Sound Scientific Panel Recommendations (See Recommendation R7.16 of Report 5)

0 1 2 Kilometers

Albers Equal Area projection  
NAD83

October 14, 2003  
Map produced by MRM Coast Region for the Clayquot Sound Planning Committee

# Flores Island Planning Unit Watershed Rate of Cut Limits

