

Preamble

This preamble is meant to provide the context in which this variance was reviewed and approved and does not form part of the variance.

This variance was initiated in response to requests from East Kootenay forest licensees to align Biodiversity Emphasis Options (BEO) mapping to revised Biogeoclimatic Ecosystem Classification (BEC) mapping in the Cranbrook and Invermere Resource Management Zone areas. Revised BEC mapping from the Forest Research Branch of the Ministry of Forests and Range for the Rocky Mountain Forest District has been used to align the BEO. This change has been made to incorporate improved information regarding BEC mapping and to reduce the complexity involved in managing for BEO. These changes are expected to help improve timber and biodiversity management in the area. This variance was not publicly advertised as it was felt that approval of this variance would not significantly affect the public.

The following information was considered in approving this variance. The Ministry of Forests and Range, Ministry of Environment and major forest licensees within the Cranbrook and Invermere RMZ's have indicated support for moving to the new BEC and BEO. The revised BEC has already been considered in old growth management planning. It has also been accepted by the Defined Forest Area Management group for the Rocky Mountain Forest District.

Section a) of the Delegation of Ministers' Powers memorandum, dated February 28, 2003 provides the Regional Director with the authority to vary map 1.1 of the established order as a direct result of changes to established landscape unit boundaries, **BEC**, and other adjustments due to new technical inventory.

This variance order should be viewed in concert with the Kootenay Boundary Higher Level Plan Order dated October 26, 2002 and other variances to this order made after this date.

KOOTENAY-BOUNDARY HIGHER LEVEL PLAN ORDER (KBHLPO)

ORDER- KBHLP-07

ORDER VARYING OBJECTIVES 1 OF THE KOOTENAY-BOUNDARY HIGHER LEVEL PLAN ORDER (OCTOBER 2002) PURSUANT TO SECTIONS 3 (2) AND 3 (7) OF THE *FOREST PRACTICES CODE OF BRITISH COLUMBIA ACT* (THE ACT).

Part 1- Resource Management Zone Objective Variance

Objective 1 of the Kootenay-Boundary Higher Level Plan Order (October 26, 2002) is varied by replacing Maps 1.1 for the Cranbrook and Invermere Resource Management Zones with the attached maps.

Objective 2 (Old and Mature Forest) is varied by replacing Table 2.5 with the following table:

Table 2.5 Areas to be Managed for Mature Forest Targets

RM Z	Landscape Unit	BEC subzone/variant	BEO
Arrow			
	N501 Sheep Creek	ICH dw	Intermediate
	N504 Pend' Oreille	ICH dw	Intermediate
	N505 Stagleap	ICH dw	Intermediate
	N508 Blueberry	ICH dw	Intermediate
	N509 Dog	ICH dw	Intermediate
	N511 Cayuse	ICH dw	Intermediate
	N513 Pedro	ICH dw	Intermediate
	N514 Perry	ICH dw	Intermediate
	N518 Gladstone	ICH dw	Intermediate
	N515 Lemon	ESSF wc1	High
		ESSF wc4	High
		ICH dw	High
		ICH mw2	High
	N525 Wilson	ESSF wc1	High
		ESSF wc4	High
		ICH dw	High
		ICH mw2	High
		ICH wk1	High
	N528 Kuskanax	ESSF wc1	High
		ESSF wc4	High

RMZ	Landscape Unit	BEC subzone variant	BEO
Arrow ^{con't}			
	N529 Halfway	ESSF wc1	High
		ESSF wc4	High
	N530 Trout	ESSF wc1	High
		ESSF wc4	High
		ICH mw2	High
		ICH vk1	High
		ICH wk1	High
Boundary			
	B10 Burrell	ESSF wc4	High
	B11 Rendell	ESSF dc1	High
Cranbrook			
	C04 Hellroaring/Meachen	ESSF wm	High
		ESSF wmw	High
	C09 Yahk River	ESSF dk	Low
		ICH mk1	Low
	C14 Wigwam River	ESSF dk	High
		ESSF dkw	High
		MS dk	High
	C15 Lodgepole/Bighorn	ICH mk1	High
		MS dk	High
	C18 East Flathead	MS dk	Intermediate
	C22 Upper Elk	MS dk	Intermediate
		ESSF dk	Intermediate
		ESSF dkw	Intermediate
	C23 West Elk	ESSF dk	High
		ESSF dk w	High
Golden			
	G1	ESSF wc2	High
		ICH wk1	High
	G6	ESSF wc2	High
		ICHmw1	High
		ICH wk1	High
RMZ	Landscape Unit	BEC subzone variant	BEO

Golden ^{con t}			
	G12	ESSF vc	High
		ESSFwc2	High
		ICH wk1	High
	G13	ESSFvc	High
		ESSF wc2	High
		ESSF wm	High
		ICH mw1	High
		ICH wk1	High
	G24	ESSF wm	High
		ICH mw1	High
	G26	MS dk	High
	G27	ESSF dk	High
		MS dk	High
Invermere			
	I01 Findlay	ESSFdk1	High
		ESSF dku	High
	I02 Buhl/Bradford	ESSF dk1	High
		ESSF dku	High
		MS dk	High
	I11 Kootenay	ESSF dk1	High
		ESSF dku	High
		MS dk	High
	I16 Jumbo	ESSF dk1	High
		ESSF dk2	High
		ESSF dku	High
		ESSF wm	High
		ESSF wmu	High
		MS dk	High
	I17 Goldie	ESSF dk1	High
		ESSF dku	High
		MS dk	High
	I19 Fenwick	MS dk	Intermediate
	I20 Pallisar	MS dk	Intermediate
RMZ	Landscape Unit	BEC subzone variant	BEO
Invermere ^{con t}			

	I22 Albert	ESSFdk1	High
		ESSF dk2	High
		ESSF dku	High
		MS dk	High
	I24 Pedley	MS dk	High
Kootenay Lake			
	K05 Kid Creek	ICH dw	Intermediate
	K06 Goat River	ICH dw	Intermediate
	K08 Gray Creek	ICH dw	Intermediate
	K10 West Arm	ICH dw	Intermediate
	K12 Kaslo River	ICH dw	Intermediate
	K25 Duck Lake	ICH dw	Intermediate
	K17 Goat Range	ESSF wc4	High
		ICH mw2	High
		ICHwk1	High
	K18 Lardeau River	ESSF wc4	High
		ICH mw2	High
		ICH wk1	High
	K23 Westfall Creek	ICH wk1	High

Part 2- Filing the Order

This order will be filed with the Regional Director, Southern Interior Region, Integrated Land Management Bureau, Ministry of Agriculture and Lands on September 30, 2005.

Part 3- Effective Date

This order comes into effect immediately. Despite subsection 16 (2) of the *Forest and Range Practices Act*, all forest stewardship plans submitted after the effective date must be consistent with this order.

Originally Signed by Ken Gorsline

Ken Gorsline
Regional Director
Southern Interior Region
Integrated Land Management Bureau
Ministry of Agriculture and Lands

Date: October 1, 2005

Cranbrook RMZ

Map 1.1 Biodiversity Emphasis Options

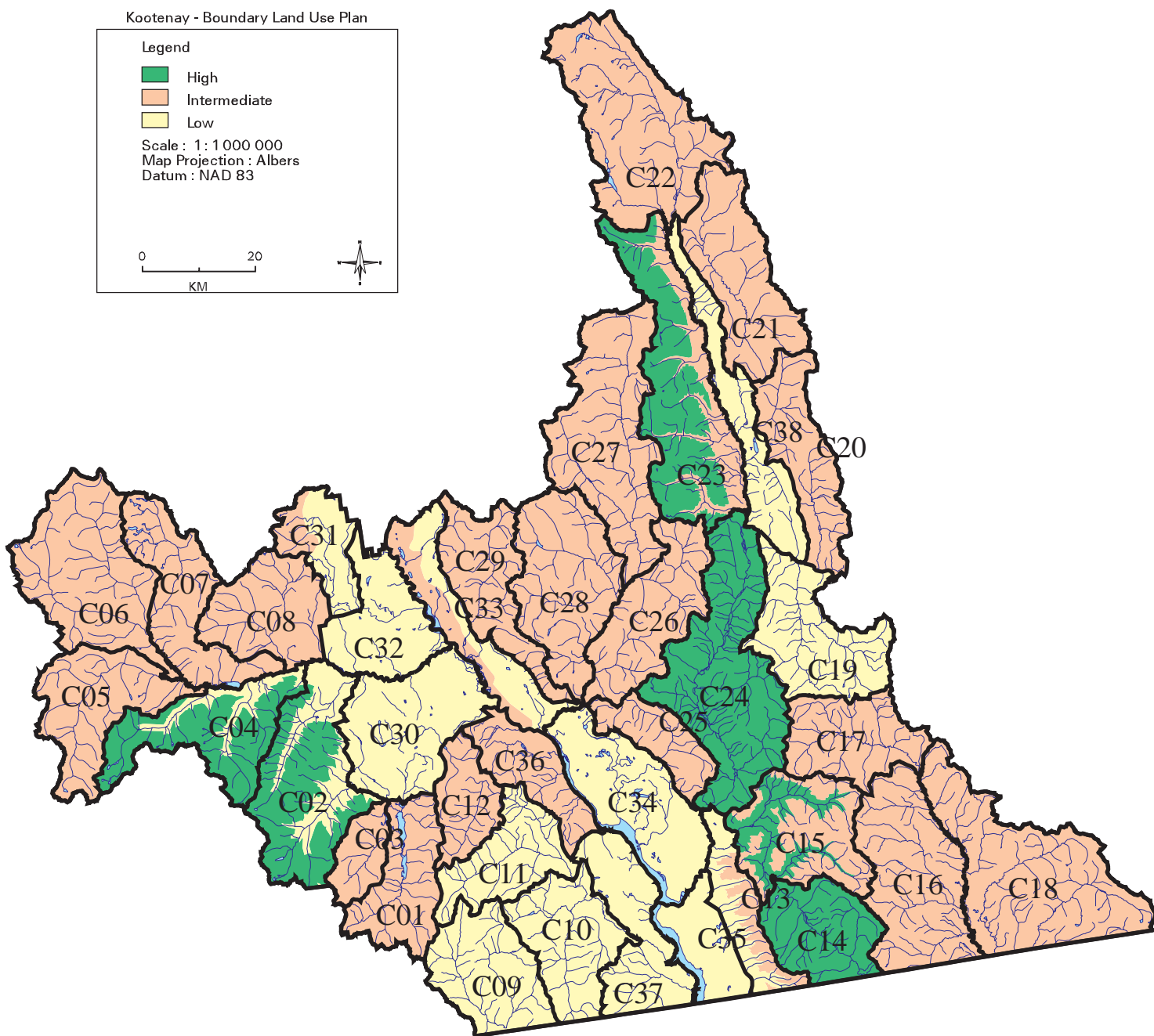
Kootenay - Boundary Land Use Plan

Legend

- High
- Intermediate
- Low

Scale : 1 : 1 000 000
Map Projection : Albers
Datum : NAD 83

0 20
KM



Invermere RMZ Map 1.1 Biodiversity Emphasis Options

Kootenay - Boundary Land Use Plan

