



TABOR MOUNTAIN SKI RESORT LTD.

P.O Box 1570, Stn A

Prince George, BC V2L 4V5

Phone 250-963-7542 Fax 250-963-3354

www.tabormountain.com

October 26, 2007

Terry Pratt
Manager, Major Projects
Resort Development Branch
Ministry of Tourism, Sport and the Arts

Dear Terry,

Tabor Mountain Ski Resort is applying for an expansion to our current Controlled Recreation Area. Our short term plans include new mountain bike trails, hiking trails and the Campground (RV Park). Long term plans in the requested expansion area include housing and accommodation development and new ski runs. We are researching possibilities for developing a four seasons resort – a community with an active outdoor lifestyle.

Please note the following explanations for the Proposed Expansion Area MAP 1.

RED ZONE - Requested total expansion for the purposes of:

- future ski runs and lifts
- mountain bike trails
- hiking trails
- future applications for water rights for snow making
- Area on north side of highway suitable for water treatment.

PURPLE ZONE

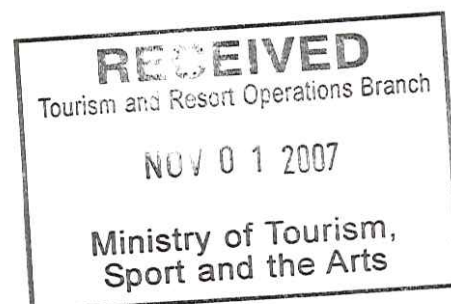
- Area to the east of the current CRA for Campground (large RV access)
- Area to the west of current CRA for Campground (suitable for tenting and small vehicles.)
- Encloses remaining length of access road in our CRA.
- The southeast corner of the purple zone contains a small quarry that is currently designated to File # 0276364 (Purple zone, MAP 4). We would like access to this material for the construction of the Campground. The quarry has either never been used, or not for many years. The quarry in the red zone on MAP 4 is currently under use by the MOT.

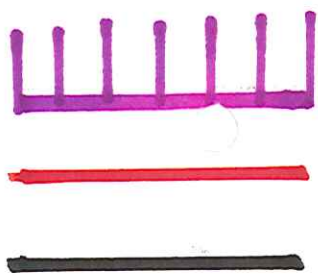
CROSS COUNTRY SKI TRAILS

- We have marked the cross country ski trails on MAP 3 that have not been in use for many years. Our proposed expansion for Campground purposes does not overlay or conflict with current cross country ski trail use.

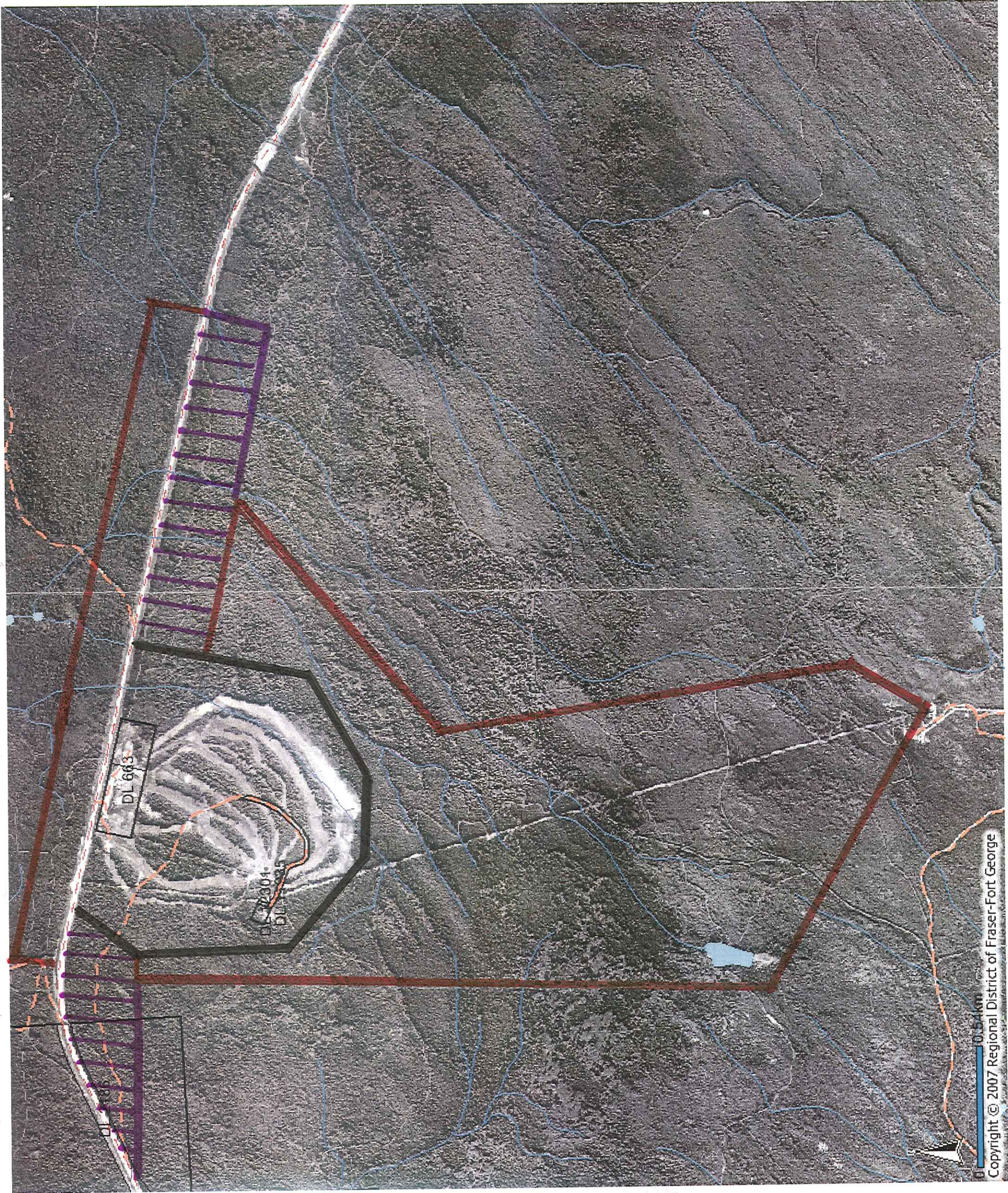
Thank-you for your assistance!

Fern Thibault
Tabor Mountain Ski Resort Ltd.



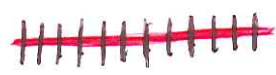


Existing boundary.
Proposed boundary for skill expansion
Proposed boundary for RV park and camping

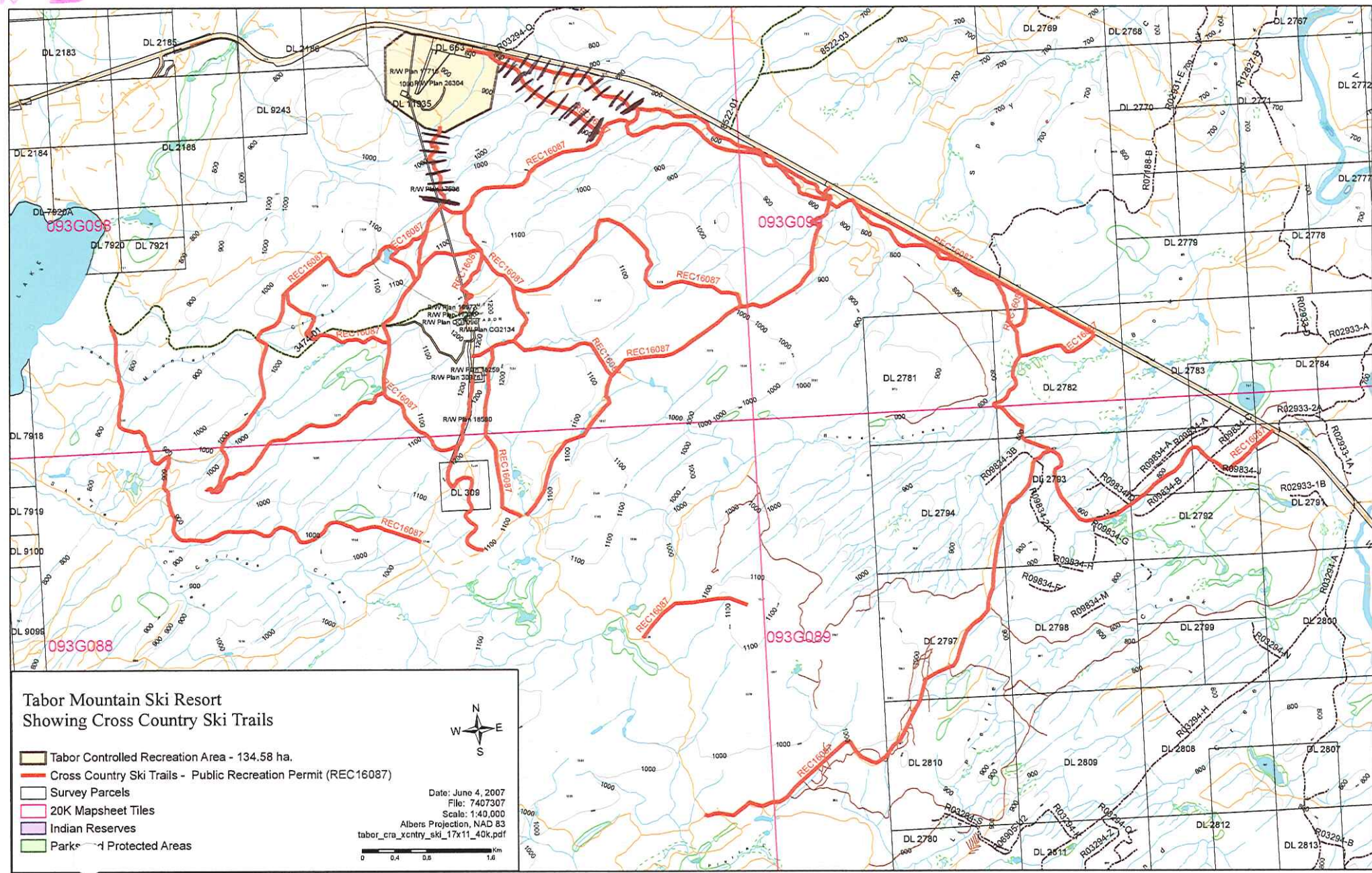


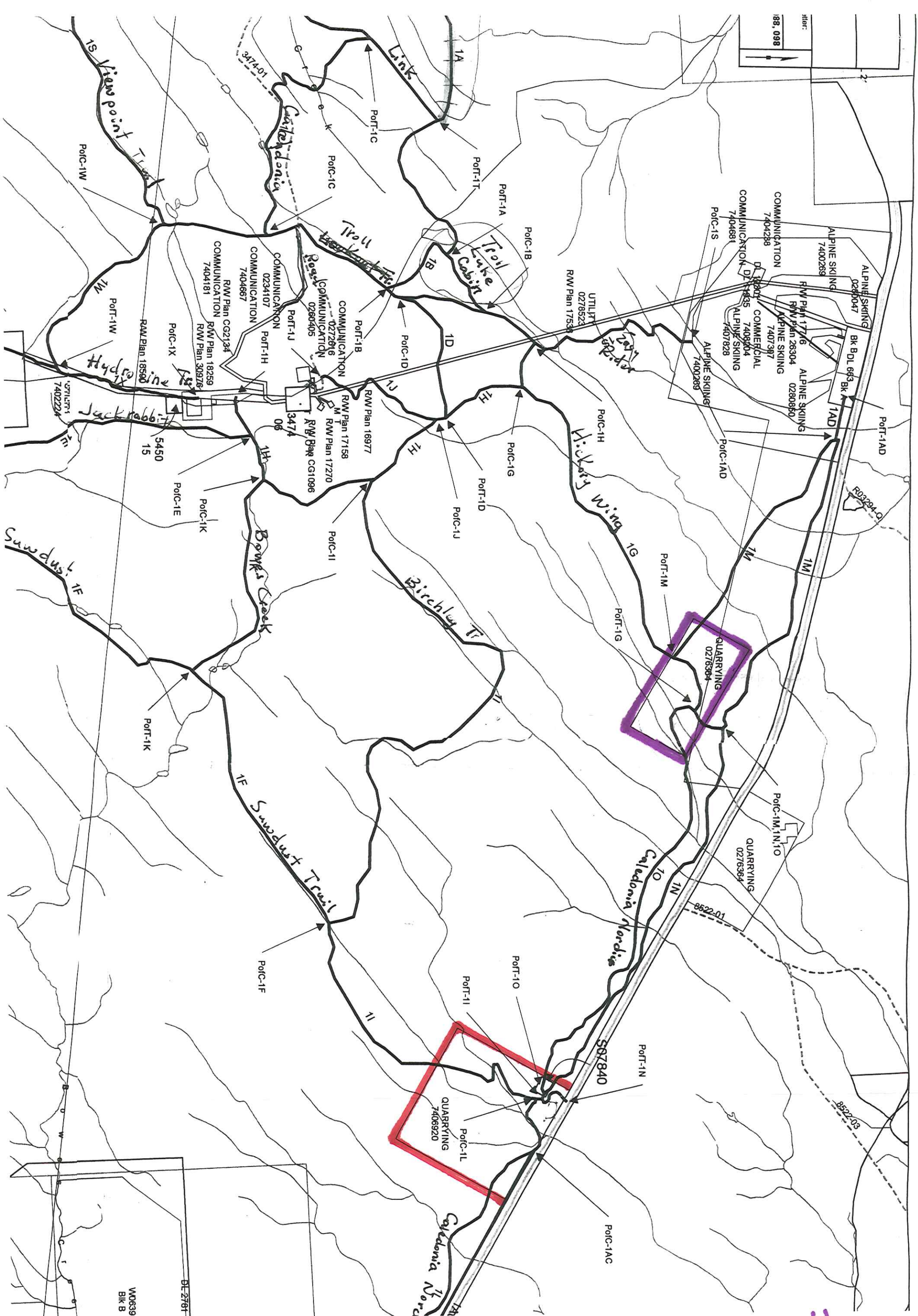
#1 map

Map
#3



Three ski trails and not in use.





Map #4