



Ministry of
Transportation
and Infrastructure

ELECTRICAL AND TRAFFIC ENGINEERING MANUAL

Appendix 500.4

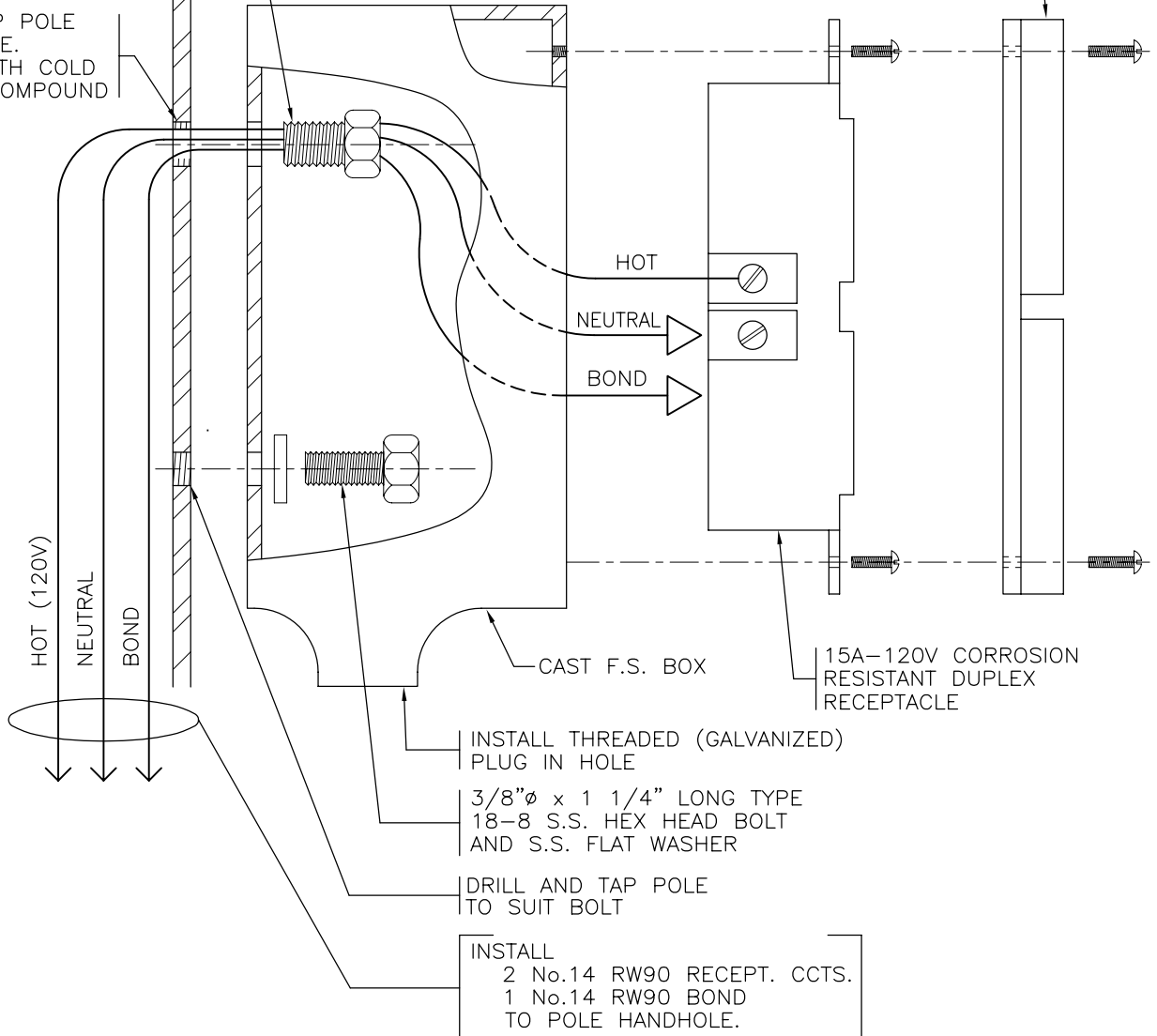
Duplex Receptacle Installation Details

1/2"Ø INSULATED CHASE
NIPPLE (GALVANIZED)

GALVANIZED STEEL
POLE

DRILL AND TAP POLE
TO SUIT NIPPLE.
COAT HOLE WITH COLD
GALVANIZING COMPOUND

DOUBLE SPRING DOOR COVERS
FOR WET LOCATIONS (CROUSE
HINDS No. WLRD-1 OR APPROVED
ALTERNATE)



NOTES

1. RECEPTACLE MOUNTING HEIGHT AND ORIENTATION ON POLE SHALL BE NOTED ON THE PLANS OR SHALL BE PROVIDED BY THE MINISTRY REPRESENTATIVE.
2. FUSE RECEPTACLE CIRCUITS, WITH A 10AMP FUSE, IN THE HANDHOLE AT THE BASE OF POLE. (SEE DRAWING SP235-2.5.5)
3. RECEPTACLES SHALL NOT BE INSTALLED ON POLES WITHIN 50m OF A SIGNALIZED INTERSECTION AND SHALL NOT BE UNDER ANY CIRCUMSTANCES BE INSTALLED ON TRAFFIC SIGNAL OR SIGN POLES.
4. S.S. INDICATES STAINLESS STEEL

NOT TO SCALE



**Province of
British Columbia**

Ministry of
Transportation and
Highways

No.	Revision	Date	DUPLX RECEPTACLE INSTALLATION DETAILS	
F				
E				
D				
C				
B				
A				
			Date	Approved
			24 NOV 94	A SADLER (Signature on File) Senior Electrical Engineer
			DRAWING No. ML-2.1	