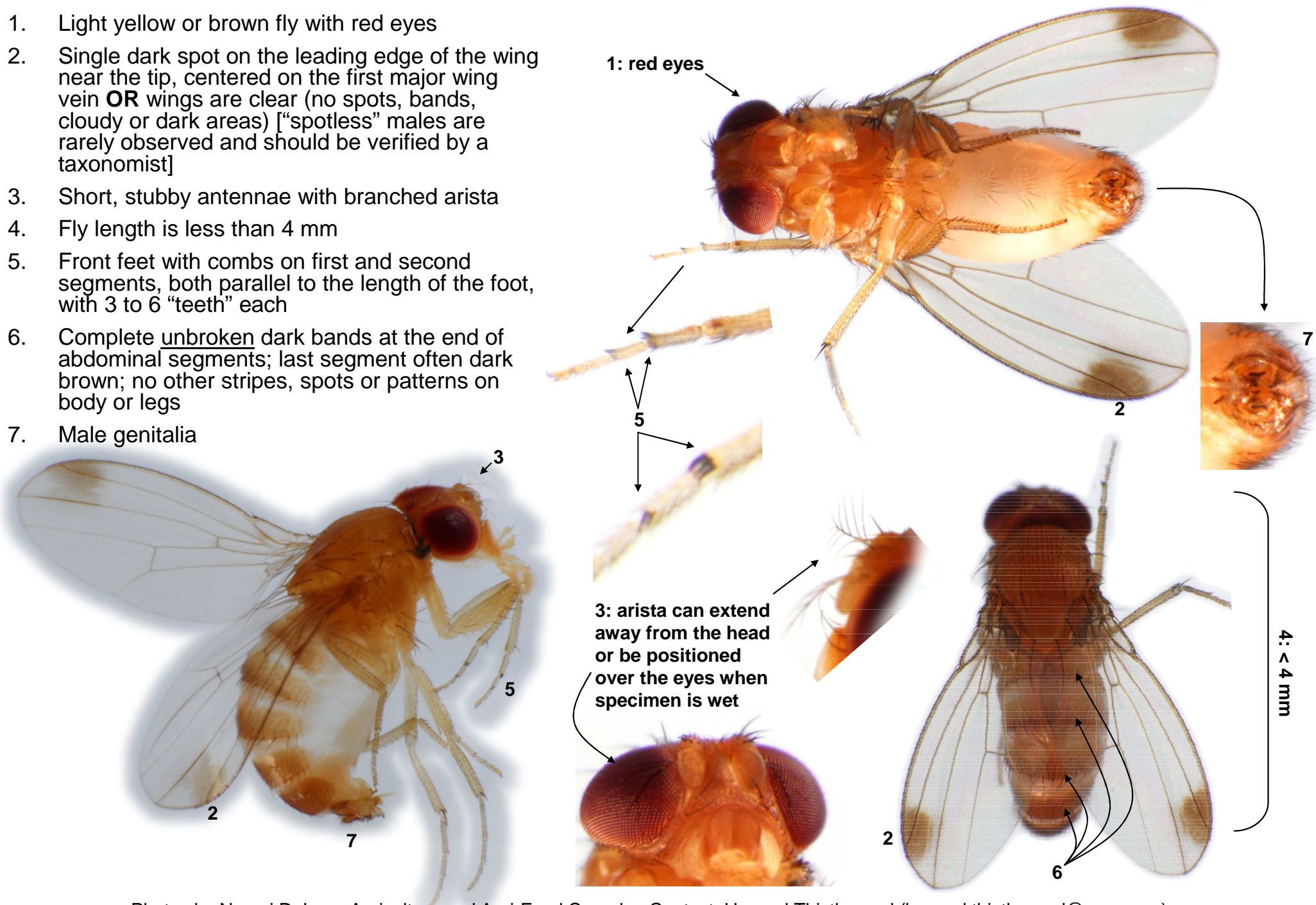


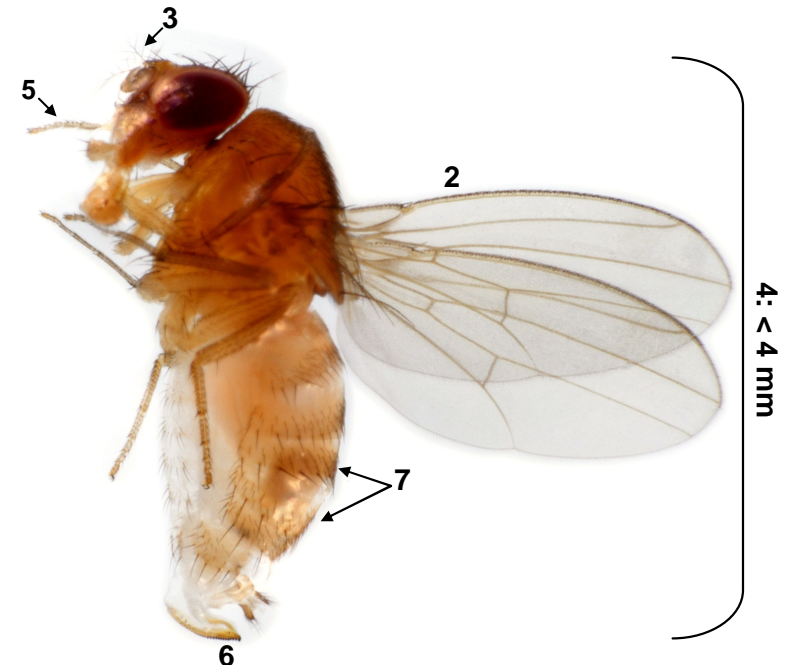
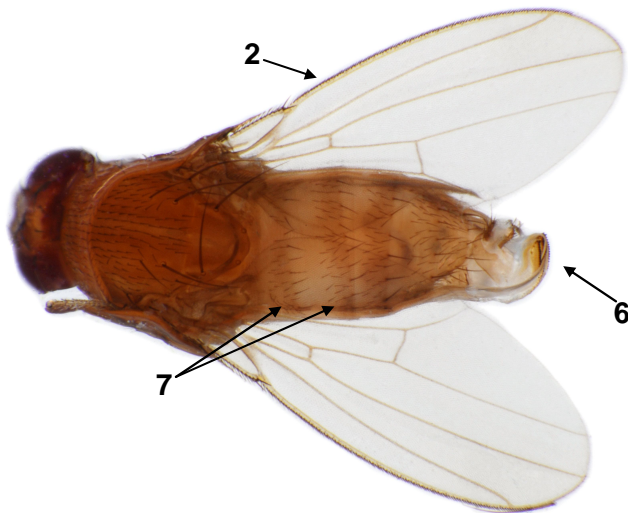
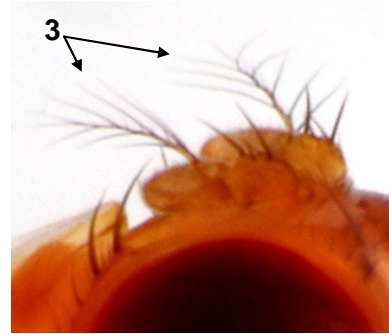
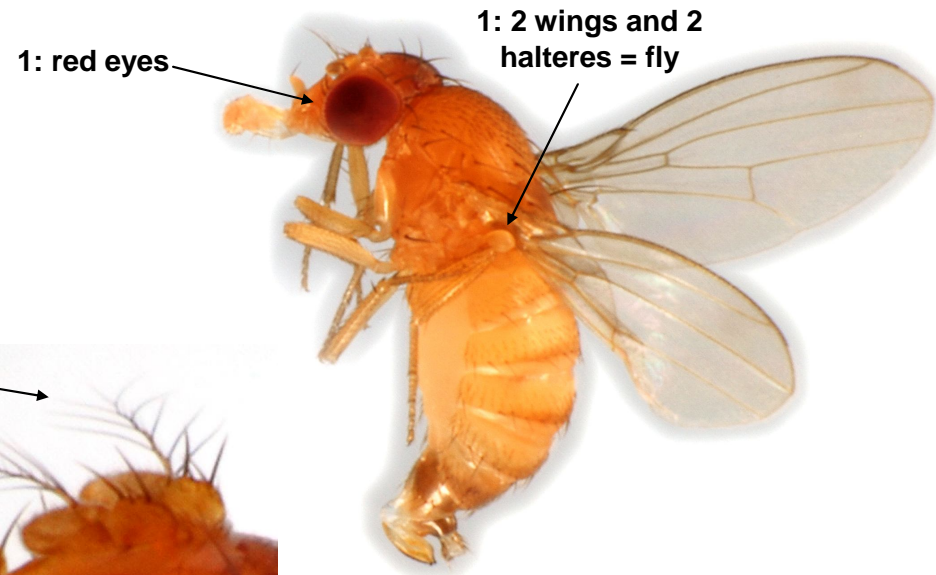
Drosophila suzukii male character summary:

1. Light yellow or brown fly with red eyes
2. Single dark spot on the leading edge of the wing near the tip, centered on the first major wing vein **OR** wings are clear (no spots, bands, cloudy or dark areas) ["spotless" males are rarely observed and should be verified by a taxonomist]
3. Short, stubby antennae with branched arista
4. Fly length is less than 4 mm
5. Front feet with combs on first and second segments, both parallel to the length of the foot, with 3 to 6 "teeth" each
6. Complete unbroken dark bands at the end of abdominal segments; last segment often dark brown; no other stripes, spots or patterns on body or legs
7. Male genitalia



Drosophila suzukii female character summary:

1. Light yellow or brown fly with red eyes
2. Wings clear (no spots, bands, or cloudy area)
3. Short, stubby antennae with branched arista
4. Fly length is less than 4 mm
5. No combs on feet
6. Large sclerotized (hard, shiny and dark), ovipositor with strong serrations or saw-like teeth that are much darker than rest of ovipositor
7. Complete unbroken dark bands at the end of abdominal segments; last segment can be all dark brown; no other stripes, spots or patterns on body



Comparison of females from two similar *Drosophila* spp.



Drosophila sp.

-Ovipositor is weakly serrated, soft and smaller than for Spotted Wing *Drosophila*, all other characters match the key for SWD

Drosophila suzukii

