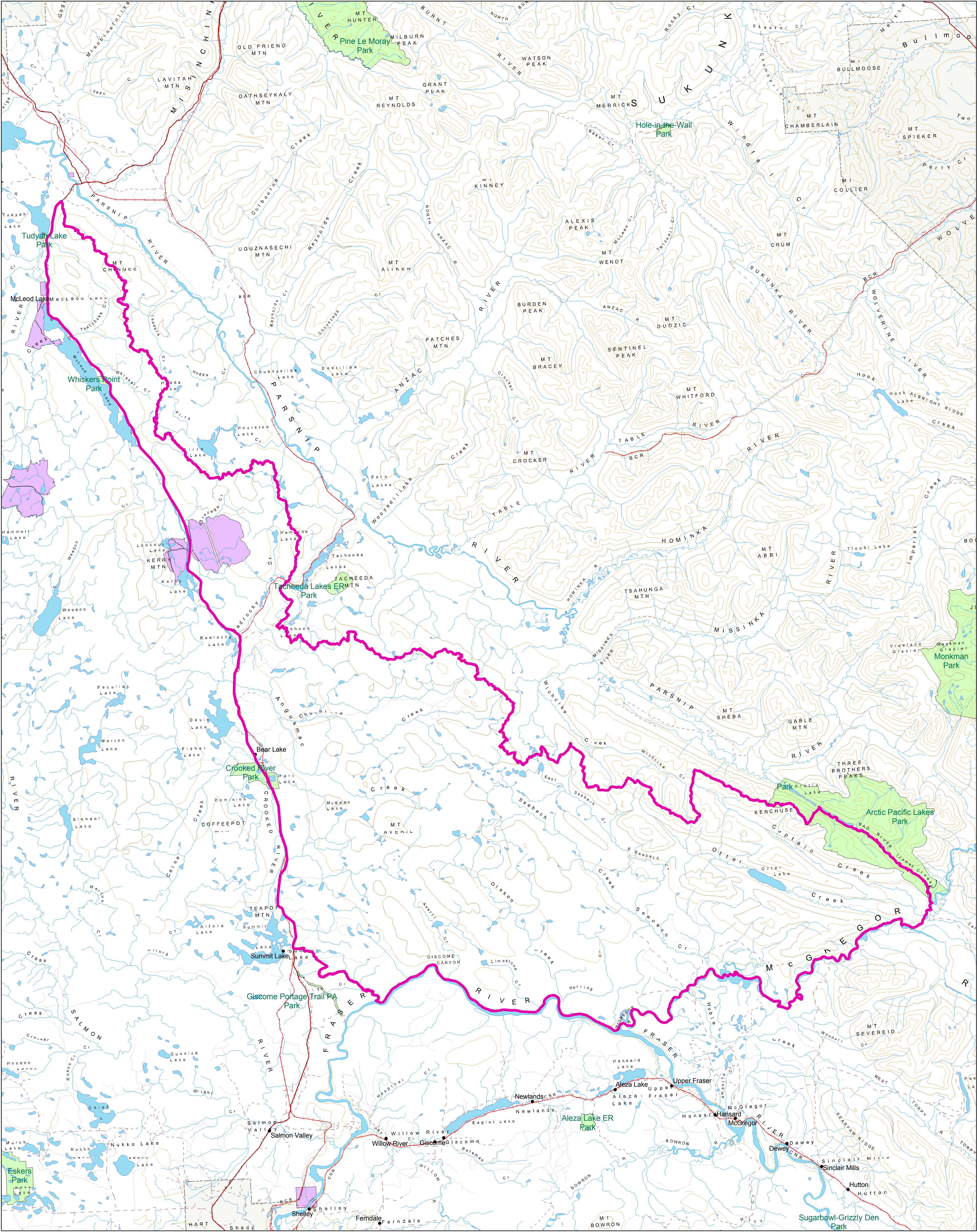
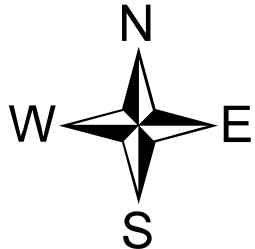


2006 / 2007 Moose Zone C of 7-16



Legend

These maps represent LEH zone boundaries only. For other boundary information including, but not limited to, species closed areas, management unit boundaries, no hunting/shooting areas and motor vehicle restricted areas, refer to the appropriate regulations. Road data is not up to date and roads depicted may not exist. New roads from 1995 onwards are not shown on map.



0 2.5 5 10 15 20 Kilometers

- LEH Boundary**
- Contours**
- Elevation**
- Contours (index (1000 meters))
 - Countours (intermediate (200 meters))
 - Towns
 - Highway

- Roads**
- Transportation**
- Road - Paved
 - Road - Gravel
 - Road - Other
 - Railway
 - Cart/Tractor
 - Trail
 - Bridge
 - Tunnel

- Rivers (single line)
- Rivers (double line)
- Lakes
- Ocean
- BASE
- Ocean
- Indian Reserves

- tpas_bc region.pa**
- FCODE**
- FM94000400
 - XXXXXXXXXX
 - Municipality

Produced for:
LEH

Produced by:

Land Information BC

**Integrated Land Management Agency
Corporate Information Services**

Filepath: q:\projects\clients\wlap\leh\arcgis_06\i43.mxd
Projection/Datum: BC Albers
Date Created: 2006, March 29
Created by: Victoria Service Center, JD