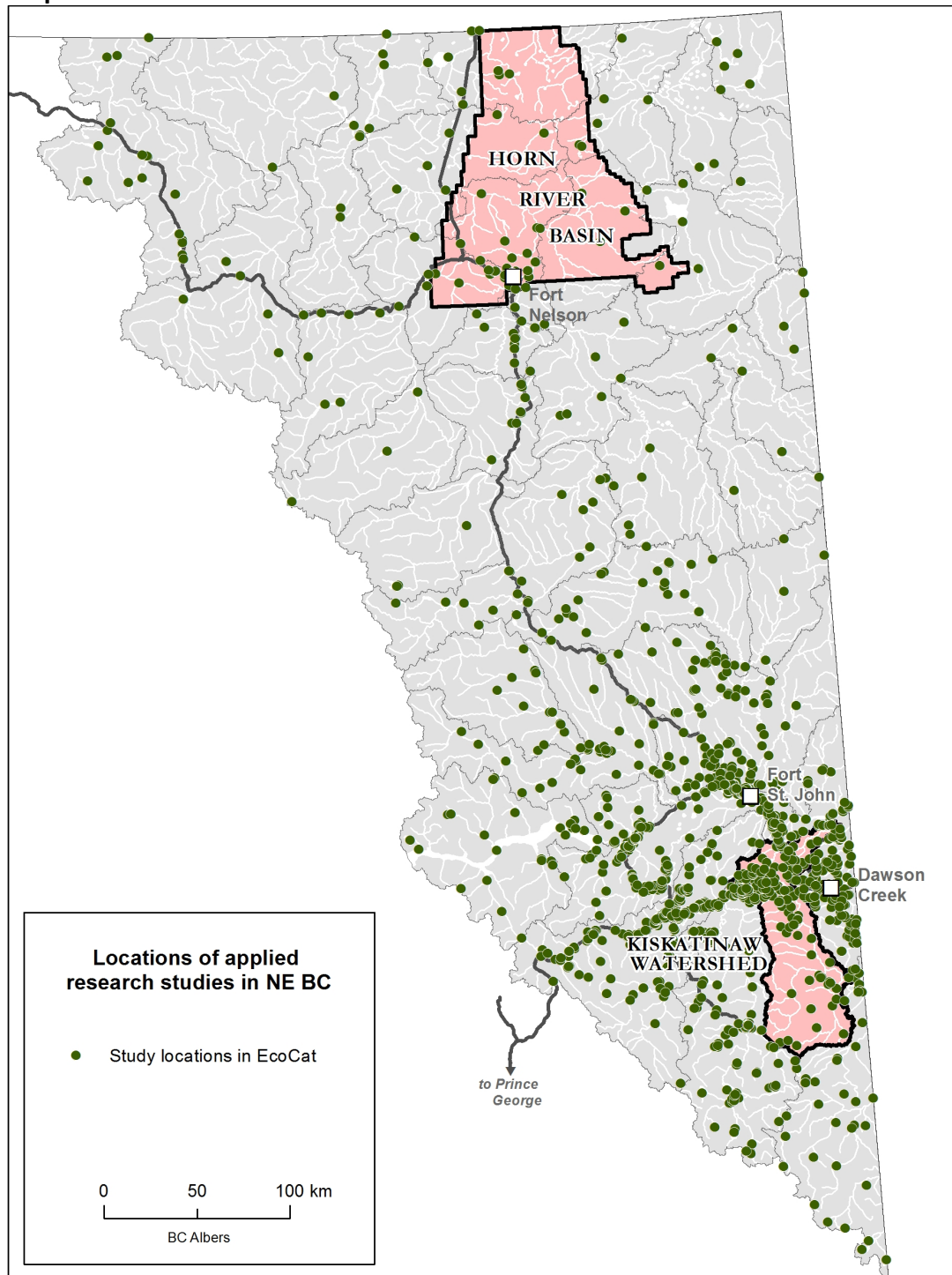
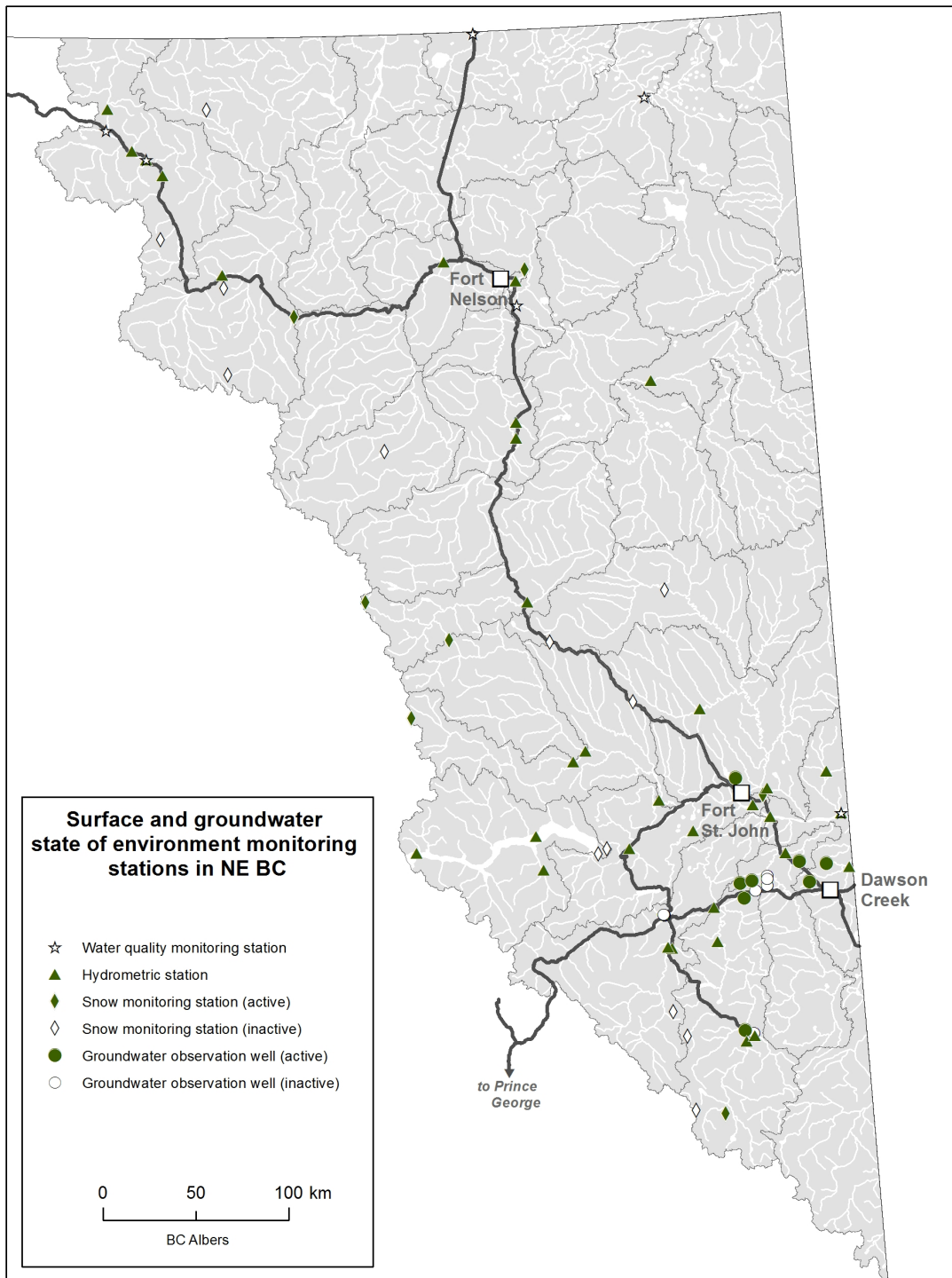


Map #1



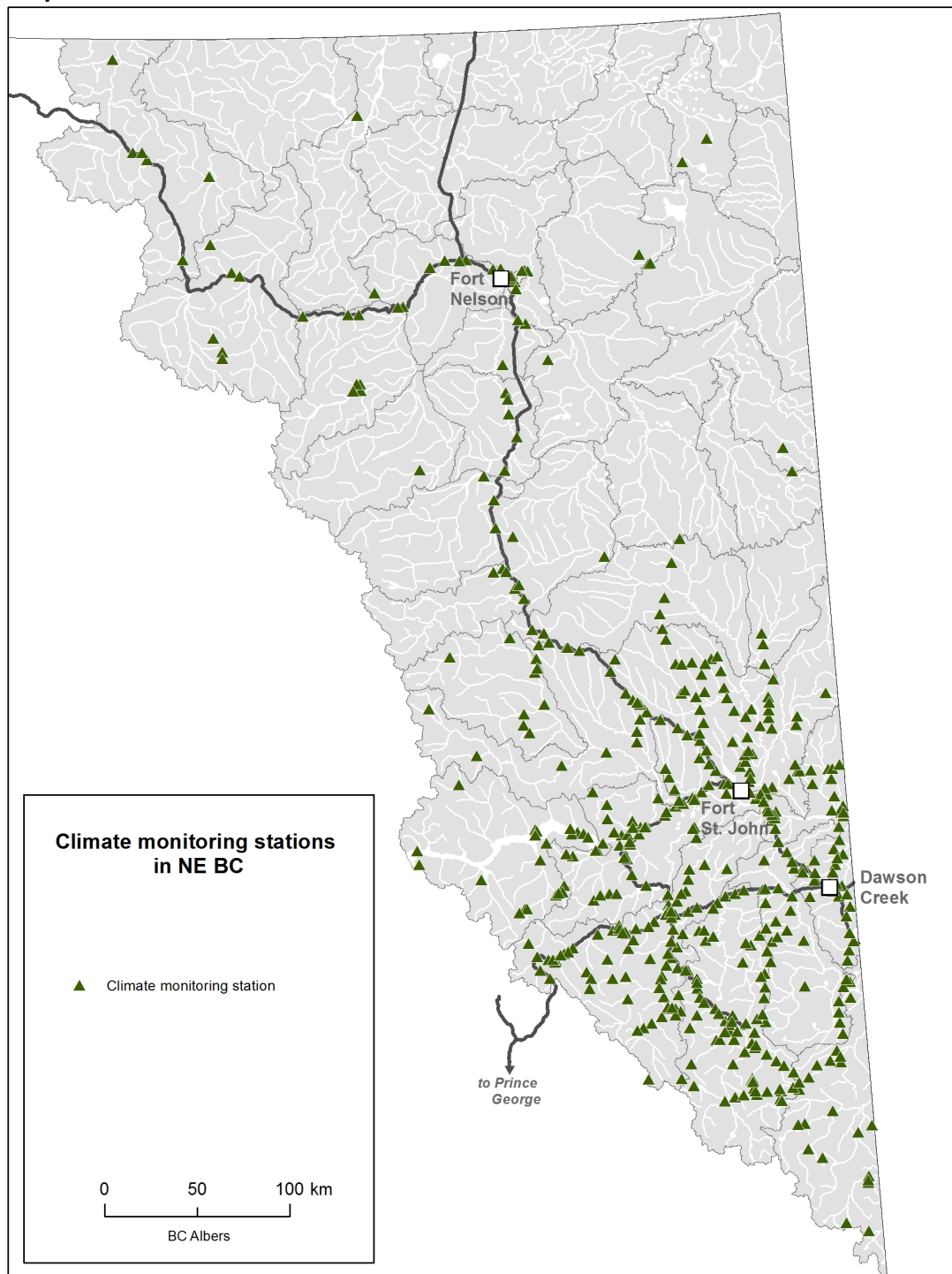
Source: Study locations from EcoCat database, data available online at: <https://apps.gov.bc.ca/pub/geometadata/metadataDetail.do?recordUID=50138&recordSet=ISO19115> ; for more information visit: <http://www.env.gov.bc.ca/ecocat/>

Map #2



Source: Hydrometric stations, snow monitoring stations and groundwater observation well locations were taken from DataBC. Water quality monitoring station location information is available at: <http://waterquality.ec.gc.ca/waterqualityweb/searchtext.aspx?lang=EN>

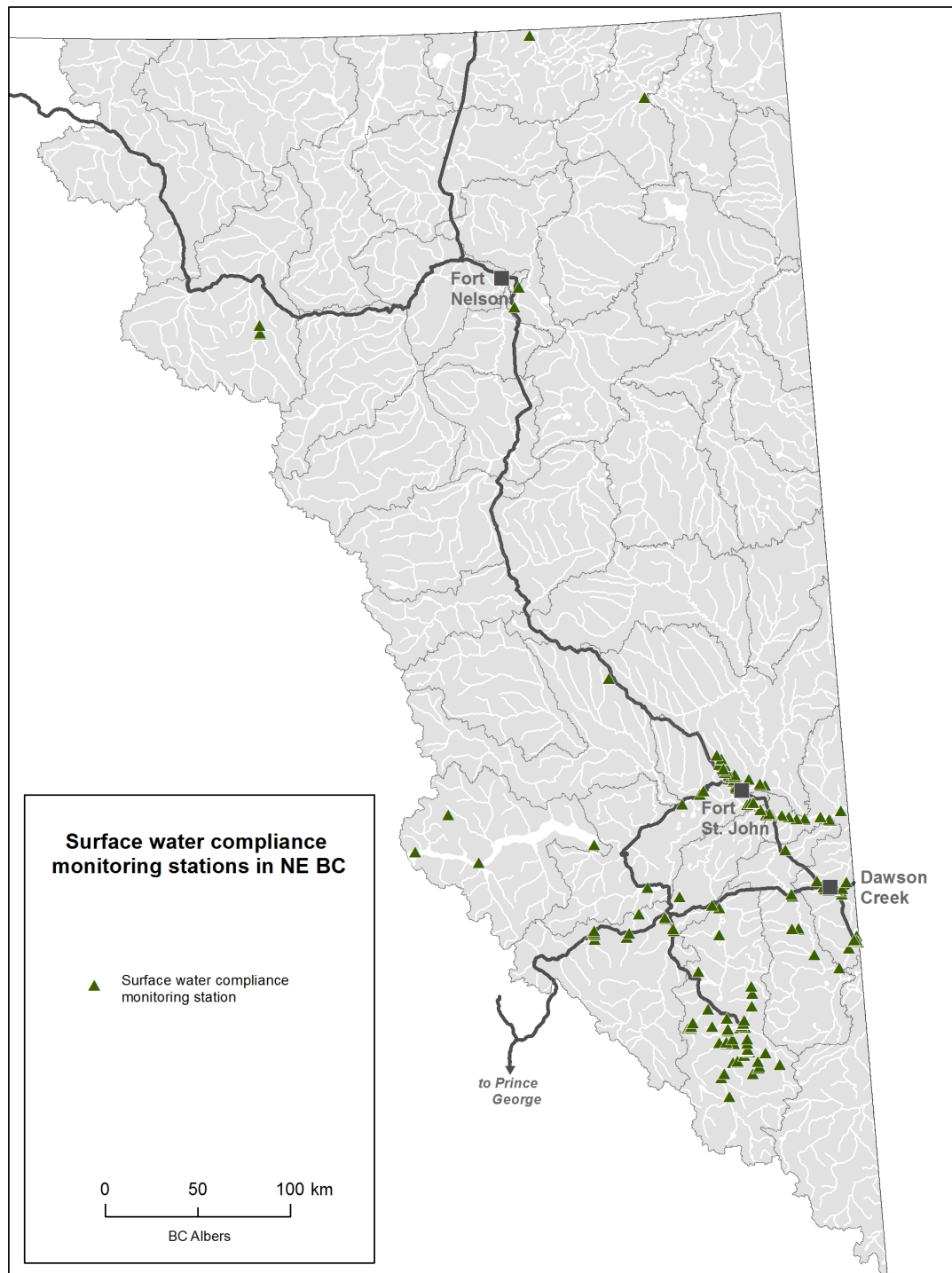
Map #3



Source Notes: All climate monitoring stations shown are part of the Climate Related Monitoring Program which is a partnership with the Ministries of Environment, Transportation and Infrastructure, Natural Resource Operations and Agriculture, together with BC Hydro and Rio Tinto Alcan. Station locations are available through the Provincial Climate Data Set Portal hosted by the Pacific Climate Impacts Consortium and available at:

<http://www.pacificclimate.org/tools-and-data/pcds-portal>

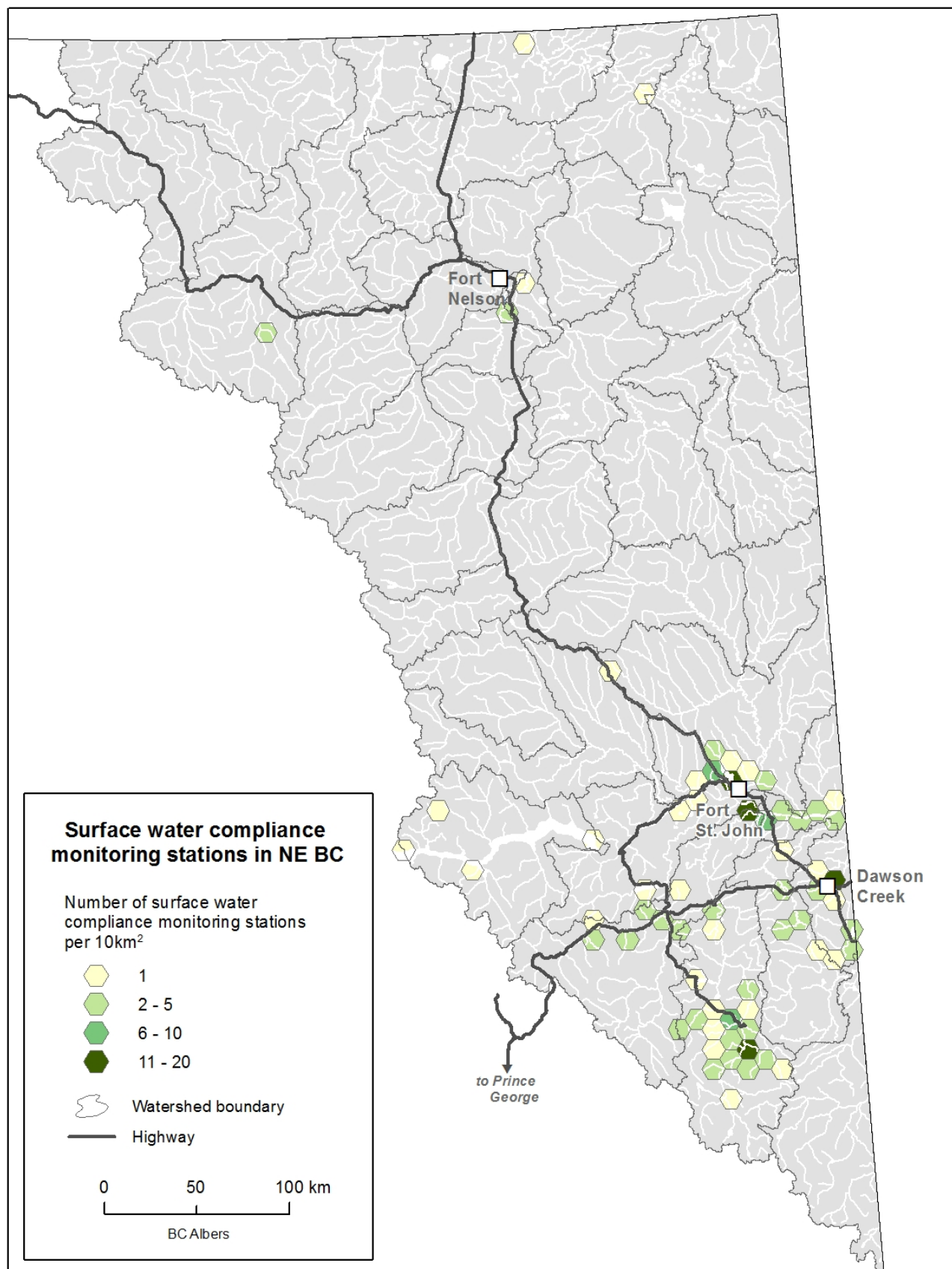
Map #4



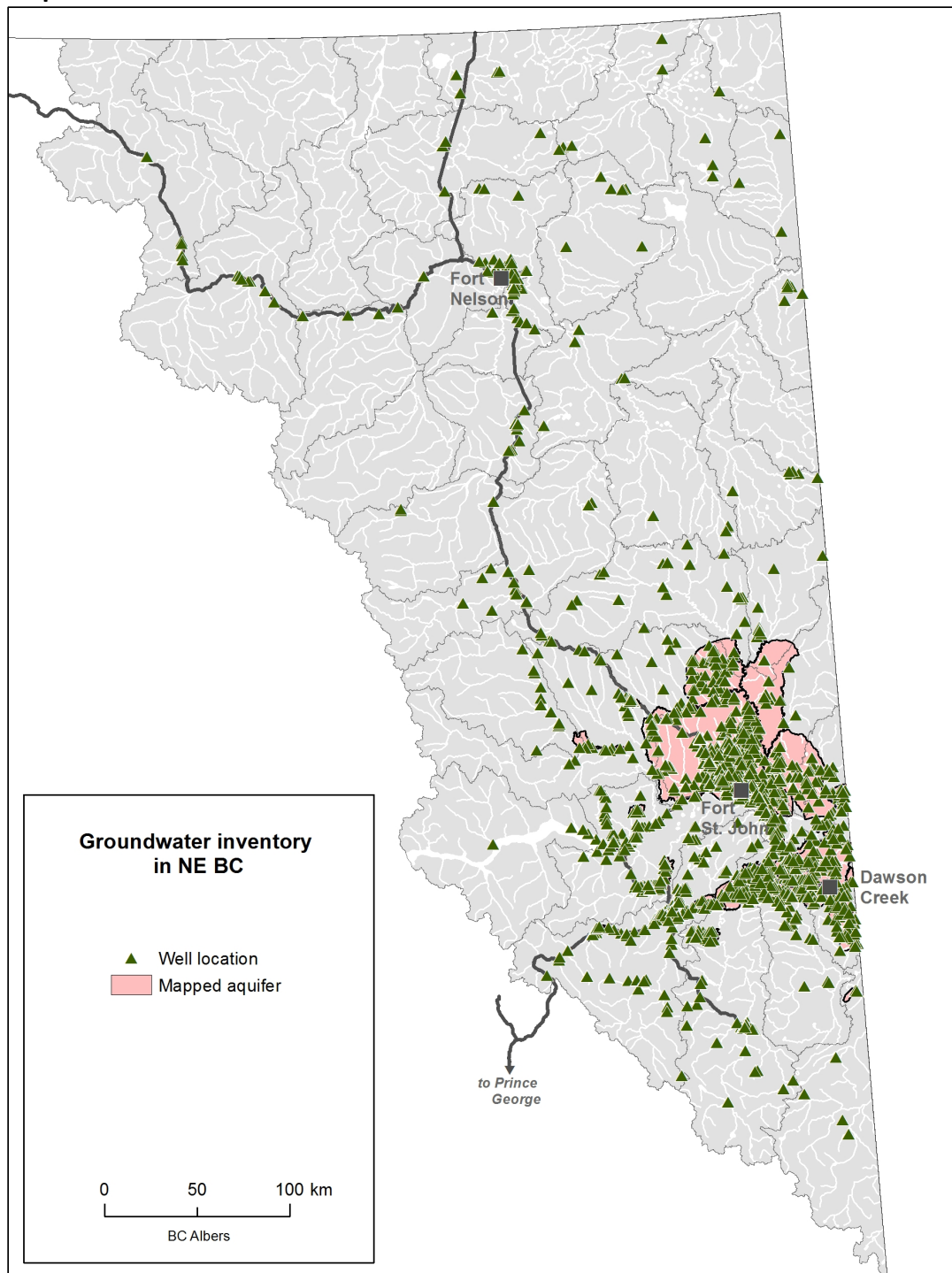
Source: BC Environmental Management System (EMS) Web Reporting available at:

<http://www.env.gov.bc.ca/emswr/>

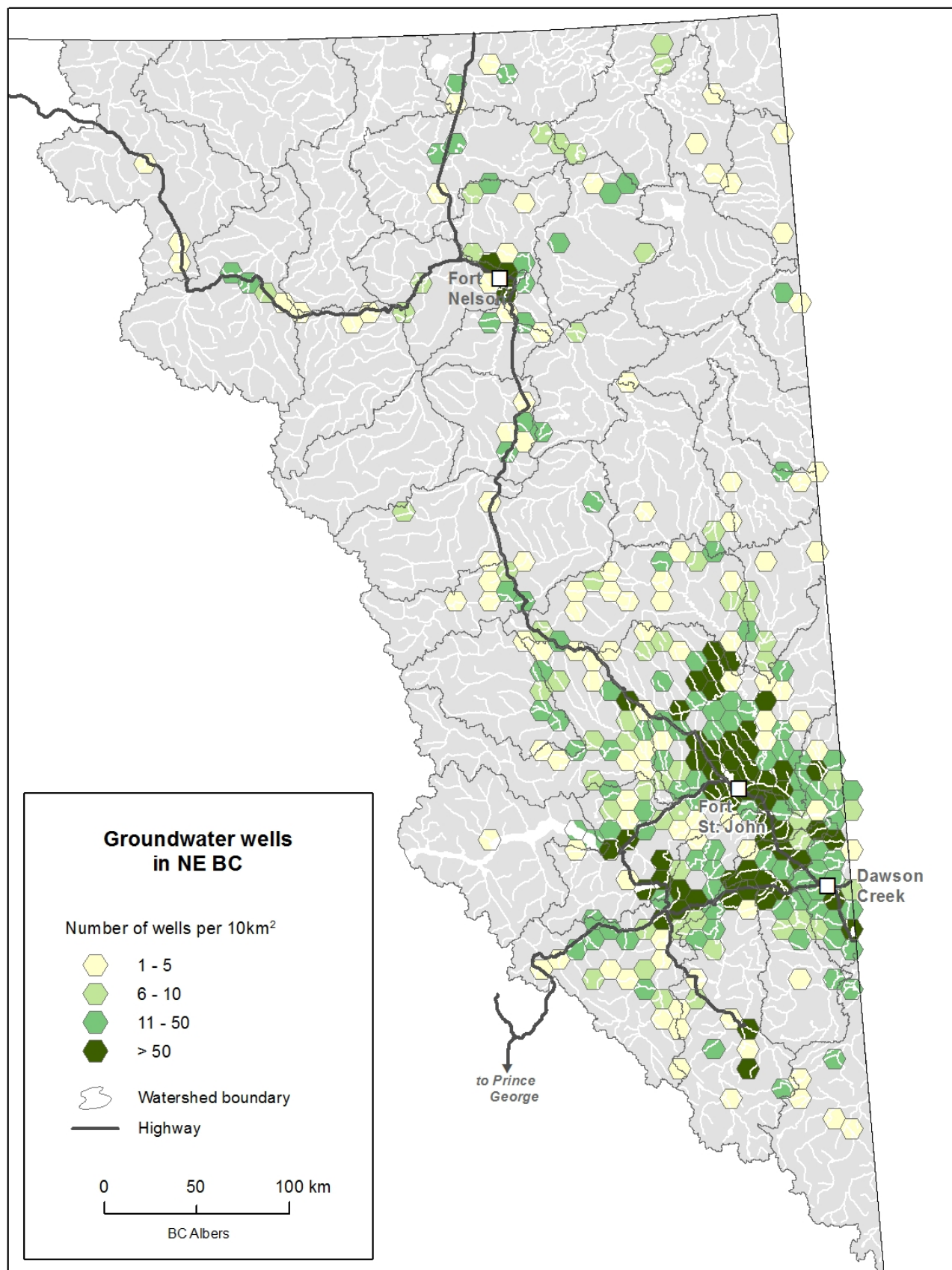
Notes: Station locations were downloaded from the EMS database. The following search parameters were used to limit the number of stations returned: type description = lake or pond, river, stream or creek, ditch or culvert; purpose = trend.

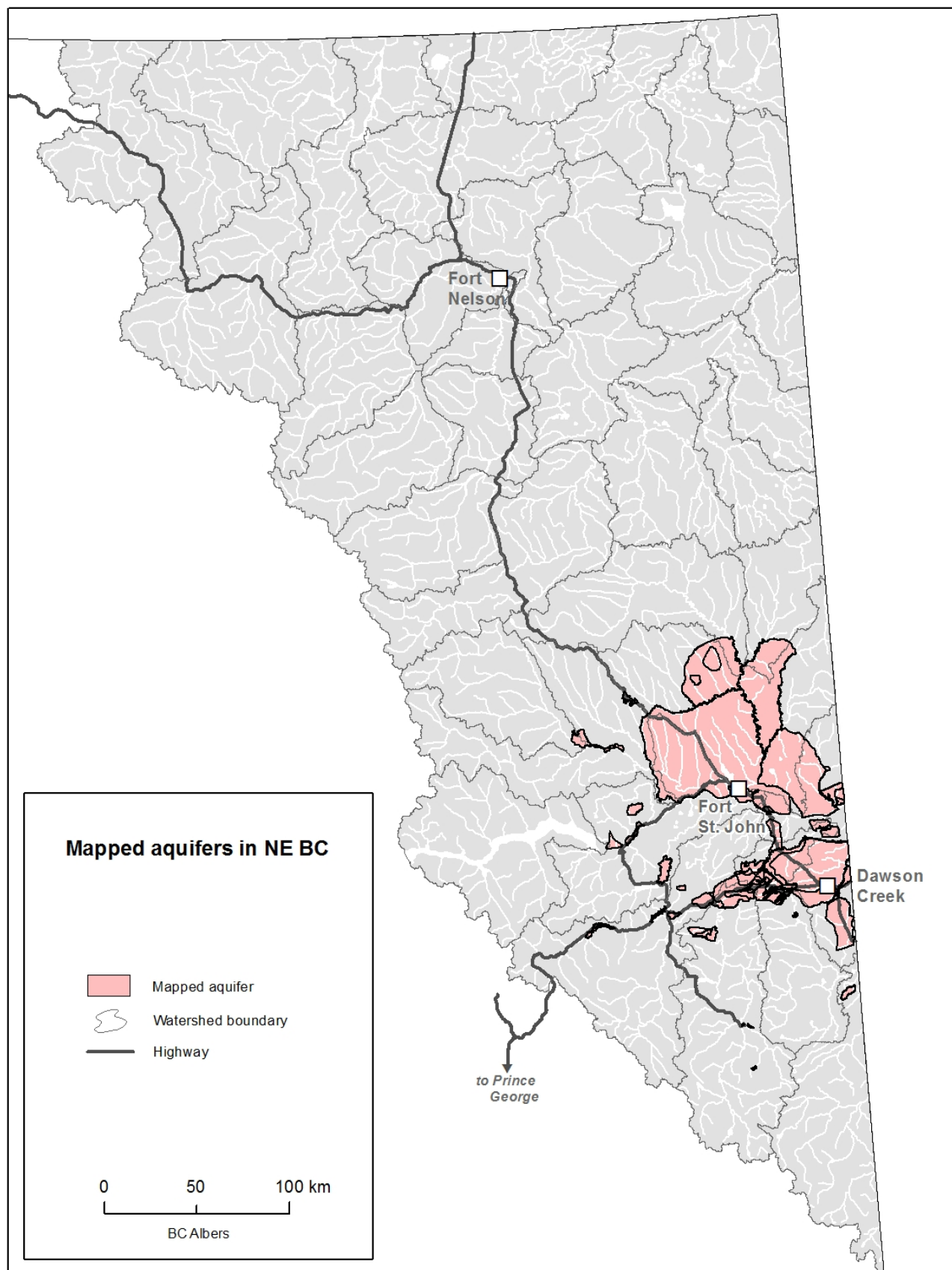


Map #5

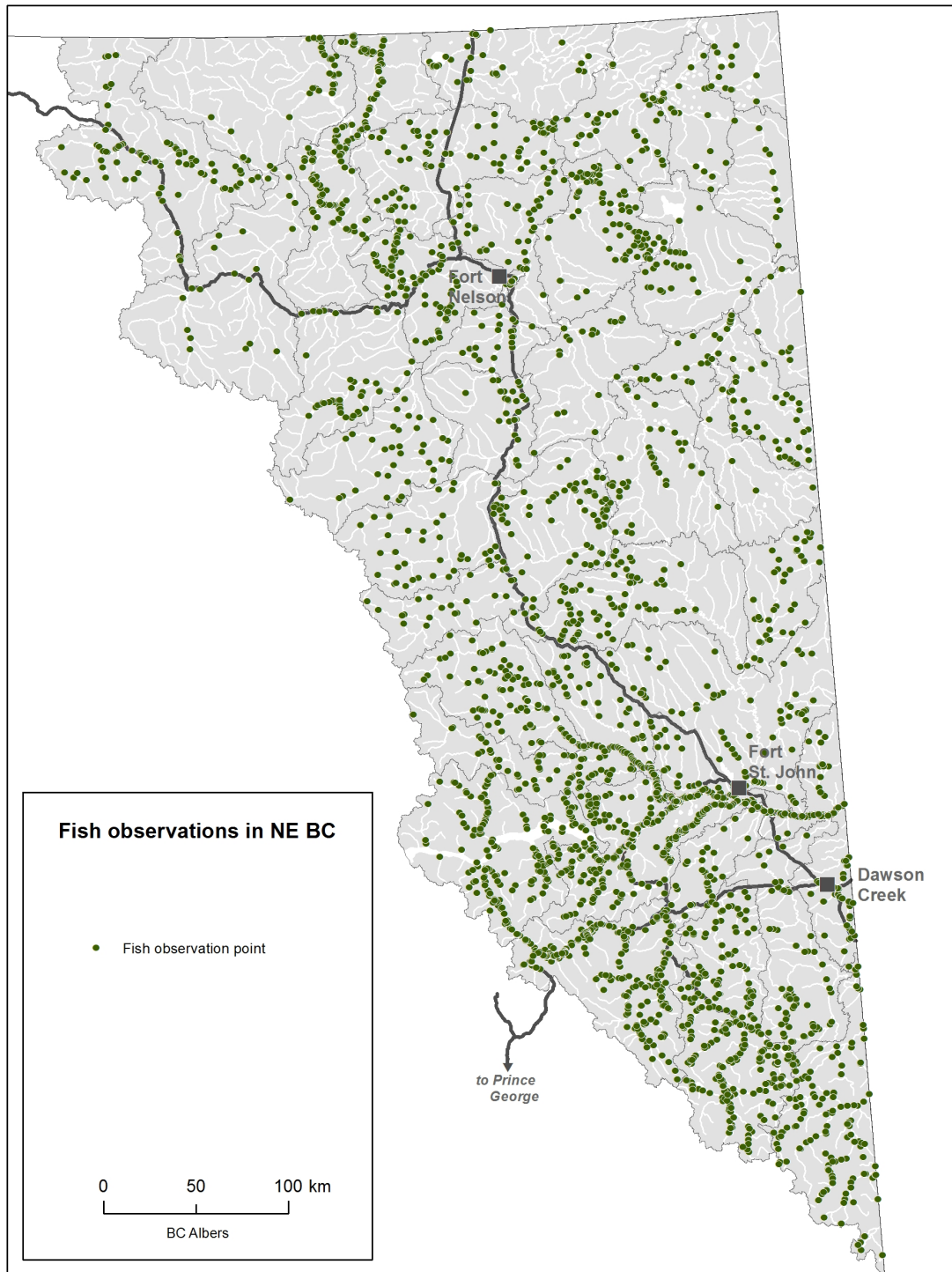


Sources: Well location from WELL Database, data available at:
<https://apps.gov.bc.ca/pub/geometadata/metadataDetail.do?recordUID=60839&recordSet=ISO19115>; Mapped aquifer locations from DataBC:
<https://apps.gov.bc.ca/pub/geometadata/metadataDetail.do?recordUID=3841&recordSet=ISO19115>





Map #6



Source: Fish observation points were taken from DataBC:

<https://apps.gov.bc.ca/pub/geometadata/metadataDetail.do?recordUID=43471&recordSet=ISO19115>

