

# HealthADAPT

## Climate Change and Health Adaptation

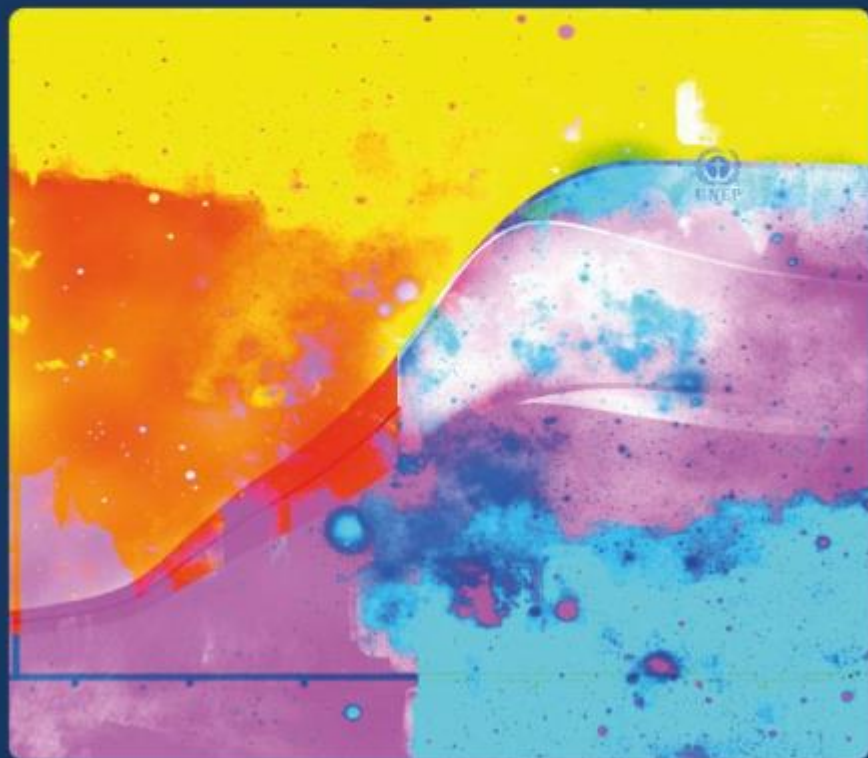
Public Sector Climate Leadership Symposium

November 26, 2019

Craig Brown, Project Lead

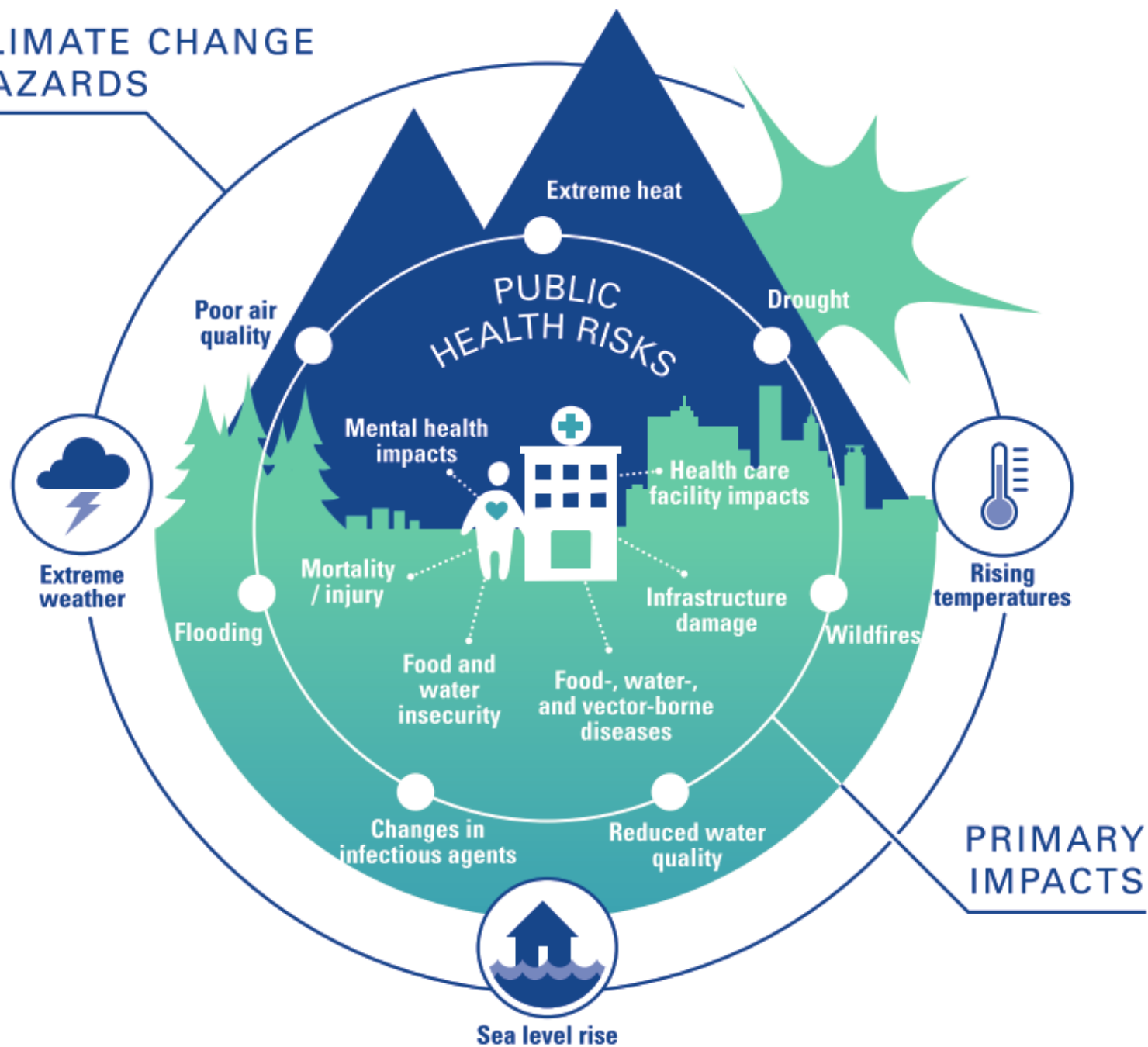
# Global Warming of 1.5°C

An IPCC special report on the impacts of global warming of 1.5°C above pre-industrial levels and related global greenhouse gas emission pathways, in the context of strengthening the global response to the threat of climate change, sustainable development, and efforts to eradicate poverty.



LANCET COUNTDOWN:  
**TRACKING PROGRESS**  
ON HEALTH AND  
CLIMATE CHANGE

## CLIMATE CHANGE HAZARDS





Health  
Canada

Santé  
Canada

Vancouver  
CoastalHealth



fraserhealth

**HEMBC**  
Health Emergency  
Management

GreenCare™  
The icon is a stylized green leaf or drop shape with a white cross-like symbol inside.

See inset 1 for Central Coast & Bella Coola

Inset 1

0 50  
Kilometers

Fraser Health Authority  
Vancouver Coastal Health Authority

0 10 20 30  
Kilometers

Prepared by: Vancouver Coastal Health, Public Health Surveillance Unit.  
Spatial source: BC STATS, BC Ministry of Labour and Citizens' Services.

Copyright © 2013 Vancouver Coastal Health, Public Health Surveillance Unit. Not for Commercial Use.



Health  
Canada

Santé  
Canada

Vancouver  
CoastalHealth



fraserhealth

**HEMBC**  
Health Emergency  
Management

GreenCare™  
The logo icon for GreenCare is a green leaf-like shape with a white stylized cross or 'C' inside.







### **Vulnerability Assessment**

Sept 2019 to June 2020

- Which climate-sensitive hazards should be prioritized?
- Who is most vulnerable to negative health impacts?
- What parts of the health system are most vulnerable to negative impacts?
- What actions are already being taken to minimize negative impacts?

### **Strategic Adaptation Plan**

July 2020 to Sept 2021

- How can the health system be made more resilient and negative health outcomes reduced?
- How can existing programs be modified to address priority risks?
- What new and existing collaborations can drive implementation while ensuring equitable outcomes?



# ENGAGEMENT



## **Steering Committee**

Individuals from the four project partner organizations meet monthly to keep the project on track.

## **Stakeholder Advisory Committees**

Individuals from the four project partner organizations and the boarder community meet 3-4 times per year to maximize the value of the project.

## **General Engagement**

Multiple engagement activities (e.g., workshops) with different audiences to help develop the vulnerability assessment and the strategic adaptation plan.

See inset 1 for Central Coast & Bella Coola

Inset 1

0 50  
Kilometers

Fraser Health Authority  
Vancouver Coastal Health Authority

0 10 20 30  
Kilometers

Prepared by: Vancouver Coastal Health, Public Health Surveillance Unit.  
Spatial source: BC STATS, BC Ministry of Labour and Citizens' Services.

Copyright © 2013 Vancouver Coastal Health, Public Health Surveillance Unit. Not for Commercial Use.

# Thank you

Craig Brown | [craig.brown@vch.com](mailto:craig.brown@vch.com)