

Ministry of Agriculture and Lands

Ministerial Order

KAMLOOPS HIGHER LEVEL PLAN ORDER CANCELLING THE CARIBOU MANAGEMENT OBJECTIVE FROM THE KAMLOOPS HIGHER LEVEL PLAN ORDER

Preamble

WHEREAS the purpose of this order is to facilitate the implementation of the Kamloops Land and Resource Management Plan ("the KLRMP") in the context of the Mountain Caribou Recovery Implementation Plan announced by the Province on October 16, 2007,

AND WHEREAS an order dated January, 23, 1996, and an amending order dated January 23, 2006, contained two objectives regarding maintaining the population of caribou and harvesting timber in caribou winter habitat,

THEREFORE, pursuant to section 93.4 of the *Land Act*, I, Steve Carr Chief Executive Officer of Integrated Land Management Bureau hereby make the amendments set out in the attached Schedule.

Schedule

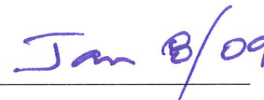
1. Pursuant to section 93.4 of the *Land Act* this order amends the order dated January 23, 1996, titled "Order Declaring the Kamloops Land and Resource Management Plan to be a higher level plan pursuant to Section 1(1) of the *Forest Practices Code of British Columbia Act*" (the original Order), which was signed by Andrew Petter, Minister of Forests, Moe Sihota, Minister of Environment, Lands and Parks, and Anne Edwards, Minister of Energy, Mines and Petroleum Resources.

The Original Order is amended as follows:

2. The Table (Appendix 2) of the original Order is amended by:
 - a. renaming the table as, Table 1: Established Objectives - Kamloops Higher Level Plan, June 2008;
 - b. renaming Figure 4 as Map 1; and,
 - c. cancelling the following provisions:
 - i. Maintain a viable population of caribou within defined ranges, while maintaining ecosystem health (as per section 2.5.2 in the Kamloops Land and Resource Management Plan)
 - ii. Implement operation timber harvesting guidelines for both late and early winter habitat areas to ensure forest attributes needed by caribou are maintained. Refer to Kamloops LRMP Timber Harvesting Guidelines for Caribou Habitat (as per Appendix 10 of the Kamloops Land and Resource Management Plan).
3. Figure 4, Kamloops LRMP, Critical Deer and Moose Winter Range dated July 28, 1995 is repealed and replaced with Map 1, Critical Deer and Moose Winter Range for Kamloops Higher Level Plan, attached to this order and dated June 18, 2008.
4. This order comes into effect when notice of this order is posted in the Gazette.



Steve Carr, Chief Executive Officer
Ministry of Agriculture and Lands



Date

Table1: Established Objectives - Kamloops Higher Level Plan, June 2008

Column 1: Section in Kamloops Land and Resource Management Plan	Column 2: Objective Established for Resource Management Zone by Section 2.1 of the Order	Column 3: Map Reference for Resource Management Zone as shown in Kamloops Land and Resource Management Plan
2.1.2 Water Management	Ensure implementation of a referral process to notify all potentially impacted water licensees when development is proposed.	Figure 3, General Resource Management Zone
2.1.2.1 Riparian Management Areas	Manage riparian areas, including streams, wetlands and lakes in accordance with the Forest Planning and Practices Regulation and the Kamloops and Clearwater District Lakeshore Management Guidelines or other applicable management tools or agency agreements.	Figure 3, General Resource Management Zone
2.1.3 Ecosystem Management	Maintain old growth attributes within landscape units.	Figure 3, General Resource Management Zone
2.1.3.1 Biodiversity Emphasis Options	To conserve the diversity and abundance of native species and their habitats throughout the Kamloops LRMP.	Figure 3, General Resource Management Zone
2.1.5. Inland Fisheries	Maintain a mosaic of angling opportunities within the recreational spectrum (i.e., walk-in lakes, drive-to lakes, trophy lakes).	Figure 3, General Resource Management Zone
2.1.10 Range	Minimize tree/grass/cattle conflicts through integrated management practices.	Figure 3, General Resource Management Zone
2.1.12 Wildlife	Ensure habitat needs of all naturally occurring wildlife species are provided for. Special attention will be paid to those red- and blue-listed species, as defined by Ministry of Environment, and species designated as regionally important (e.g. Mule Deer)	Figure 3, General Resource Management Zone
2.1.12.1 Critical Deer Winter Range	Maintain or enhance forage production and habitat requirements in critical deer winter range.	Map 1, Critical Deer Winter Range
2.1.12.1 Critical Deer Winter Range	Disperse the timber harvest throughout the winter range and spread it out evenly over the rotation.	Map 1, Critical Deer Winter Range
2.1.12.1 Critical Deer Winter Range	Maintain at least 25% of forested area in thermal cover. Link thermal cover units together with suitable travel corridors, especially mature Douglas fir vets on ridges.	Map 1, Critical Deer Winter Range
2.1.12.2 Critical Moose Winter Range	Maintain thermal and visual cover for moose, and enhance browse production.	Map 1, Critical Moose Winter Range
2.1.12.2 Critical Moose Winter Range	Maintain suitable forest cover attributes with respect to thermal cover and forage production.	Map 1, Critical Moose Winter Range

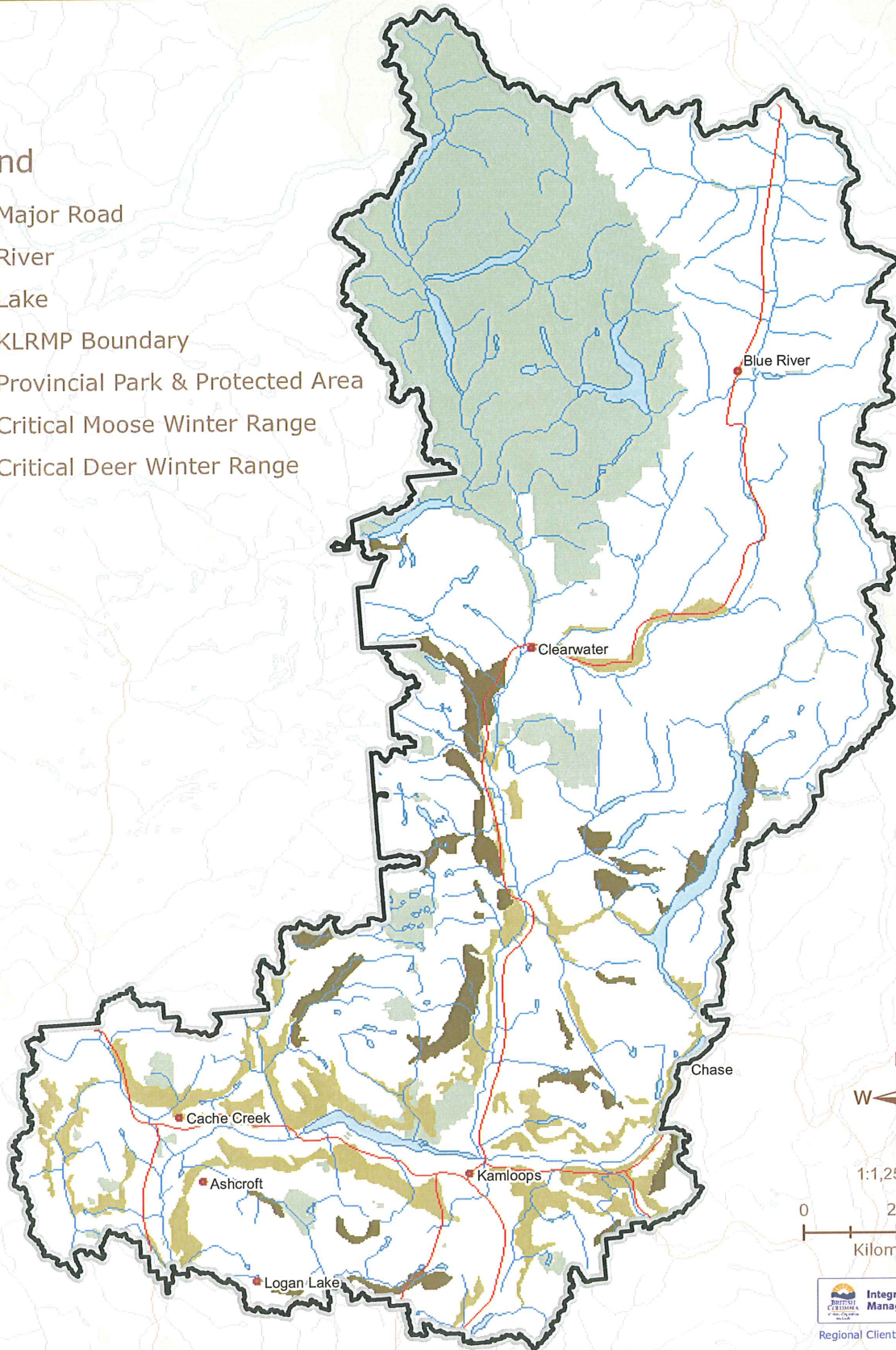
Column 1: Section in Kamloops Land and Resource Management Plan	Column 2: Objective Established for Resource Management Zone by Section 2.1 of the Order	Column 3: Map Reference for Resource Management Zone as shown in Kamloops Land and Resource Management Plan
2.1.14.1 Visually Sensitive Areas: Resource Management Objectives	The primary objective in Visually Sensitive Areas is to ensure that the levels of visual quality expected by society are achieved on Crown land in keeping with the concepts and principles of integrated resource management.	Figure 5, Visually Sensitive Areas
2.1.14.1 Visually Sensitive Areas Resource Management Objectives	Areas outside the identified visually sensitive areas in the Kamloops LRMP are managed for landscape objectives as follows: alterations may dominate the characteristic landscape but must borrow from natural line and form to such an extent and on such a scale that they are compatible to natural occurrences	Figure 5, Visually Sensitive Areas
2.1.16 Cultural and Heritage Sites	Undertake archaeological assessments in all High and Medium Potential areas identified in the Archaeological Overview Assessment.	Figure 6, Archaeological Overview Assessment
2.2 Settlement Resource Management Zones	Manage land within community growth boundary to meet the objectives set out in approved community land use plans.	Figure 7, Settlement Resource Management Zone
2.5.1 Special Resource Management - Habitat/Wildlife Management Areas: Resource Management Objectives and Strategies	The overall objective of special resource management zones for habitat and wildlife management areas is to: maintain or enhance identified wildlife habitat areas.	Figure 10, Special Resource Management – Habitat/Wildlife Management Areas
2.5.2 Special Resource Management – Habitat/Wildlife Management Areas: Area Specific Objectives and Strategies H1. North Thompson Caribou Habitat (General)	Maintain a viable population of caribou within defined ranges, while maintaining ecosystem health. Objective cancelled by LUOR order	Figure 10, Special Resource Management – Habitat/Wildlife Management Areas
2.5.2 Special Resource Management – Habitat/Wildlife Management Areas: Area Specific Objectives and Strategies H1. North Thompson Caribou Habitat (General)	Implement operational timber harvesting guidelines for both late and early winter habitat areas, to ensure forest attributes needed by caribou are maintained. Refer to Kamloops LRMP Timber Harvesting Guidelines for Caribou Habitat in (Appendix 10 of Kamloops LRMP). Objective cancelled by LUOR order	Figure 10, Special Resource Management – Habitat/Wildlife Management Areas
2.5.2 Special Resource Management - Habitat/Wildlife Management Areas: Area-Specific Objectives and Strategies H10. Battle Bluffs Wildlife Habitat	Maintain natural stand attributes in managed forests.	Figure 10, Special Resource Management – Habitat/Wildlife Management Areas

Column 1: Section in Kamloops Land and Resource Management Plan	Column 2: Objective Established for Resource Management Zone by Section 2.1 of the Order	Column 3: Map Reference for Resource Management Zone as shown in Kamloops Land and Resource Management Plan
2.5.2 Special Resource Management - Habitat/Wildlife Management Areas: Area-Specific Objectives and Strategies H10. Battle Bluffs Wildlife Habitat	Maintain habitat for flammulated owls, for primary cavity nesters e.g. Flickers and for Blue grouse.	Figure 10, Special Resource Management – Habitat/Wildlife Management Areas
2.5.2 Special Resource Management - Habitat/Wildlife Management Areas: Area-Specific Objectives and Strategies H11. Skull Wildlife Habitat	Maintain or enhance forage production and habitat requirements in critical deer winter range.	Figure 10, Special Resource Management – Habitat/Wildlife Management Areas
2.5.2 Special Resource Management - Habitat/Wildlife Management Areas: Area-Specific Objectives and Strategies H12. Skwilatin Wildlife Habitat	Maintain or enhance forage production and habitat requirements in critical moose winter range.	Figure 10, Special Resource Management – Habitat/Wildlife Management Areas
2.6.1 Special Resource Management - Recreation and Tourism: Resource Management Objectives and Strategies	Maintain viewscales in recreation and tourism areas to a standard that does not detract from the recreational enjoyment of users.	Figure 11, Special Resource Management – Recreation and Tourism
2.6.1 Special Resource Management - Recreation and Tourism: Resource Management Objectives and Strategies	Road and trail construction, maintenance and deactivation and other surface disturbances and construction will be undertaken in a manner that meets the management objectives of each recreation and tourism zone, in accordance with direction from an approved plan, local process, or enhanced referral.	Figure 11, Special Resource Management – Recreation and Tourism
2.6.1.4 Special Resource Management - Recreation and Tourism: Remote Recreation and Tourism Zones	Extractive uses are permitted providing they are consistent with the objectives of the resource management zone.	Figure 11, Special Resource Management – Recreation and Tourism

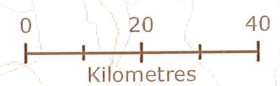
Map 1: Critical Deer & Moose Winter Range for Kamloops Higher Level Plan

Legend

- Major Road
- River
- Lake
- KLRMP Boundary
- Provincial Park & Protected Area
- Critical Moose Winter Range
- Critical Deer Winter Range



1:1,250,000



ILMB Project No: P08_0341_mountain_caribou_recovery
Document Name: draft_thompson_klrmp_moose_125m_PageSize_june_18_2008.mxd
Projection/Datum: British Columbia Albers, NAD83
Date Created: June 18, 2008
Created by: Southern Interior Region, Kamloops Service Centre