







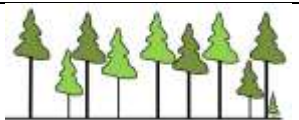


## Guidance Matrix for reporting Retention Openings into RESULTS

RETENTION OPENINGS – with > 5 m <sup>2</sup> / ha. Basal Area Retention						
Silviculture Survey Manual Guidance <i>Section referenced below in red</i>					Treed Retention Submission into RESULTS <u>Guidance (ii)</u> <i>Section referenced below in red</i>	
Steps	1 →	2 →		3 →	4a	or 4b
	Conifer Management Regime	Planned &/or Resultant Stand Structure <i>Sec 1.2</i>	Stand Structure Example Illustrations	Recommended Survey Methodology	Long Term Retention <sup>5</sup> – Reserves <i>Sec 4.1</i>	Short Term Retention <sup>6</sup> – part of a Silv System <i>Sec 4.2</i>
1a	Obligation Timber Priority					
	i) Single Entry Even –Aged	Complex Vertical Structure Dispersed Retention <sup>3</sup> - <b>Low BA only</b> <i>(suggested &lt; 10m<sup>2</sup> Interior)</i>	 <a href="#">Photo Images 1</a>	Layered <i>Sec 9.2.2</i>	Dispersed <i>Sec 4.1.2 &amp; 4.1.3</i>	Unharvested Stems <i>Sec 4.2.4</i>
	Multiple Entry Uneven-Aged					
	ii) Single Tree Selection	Complex Vertical Structure Dispersed Retention <b>IDF only</b>	 <a href="#">Photo Images 2</a>	Multi-storey <i>Sec 9.2.1</i>		Single Tree <i>Sec 4.2.1</i>
	iii) Group Selection	Complex Horizontal Structure Group Retention <sup>4</sup> – <b>Clear Cut Openings<sup>1</sup></b>	 <a href="#">Photo Images 2</a>	Clearcut Method <i>Sec 7 &amp; 8</i>		Group Selection <i>Sec 4.2.2</i>
	iv) Group Selection	Complex Horizontal Structure Group Retention – <b>Small Patch ↑Edge Effect<sup>2</sup></b>	 <a href="#">Photo Images 3</a>	Small Scale Openings Method <i>Sec 9.3.5</i>		Group Selection <i>Sec 4.2.2</i>

<b>1b Obligation</b> <i>Non-Timber Priority</i>					
<b>i) Single Entry Even -Aged</b>	Complex Vertical Structure Dispersed Retention < 20 m <sup>2</sup> Interior < 40 m <sup>2</sup> Coast	 <a href="#">Photo Images 4</a>	SEDRSS or DFP <b>Sec 9.2.4</b>	Dispersed <b>Sec 4.1.2 &amp; 4.1.3</b>	Unharvested Stems <b>Sec 4.2.4</b>
<b>Multiple Entry Uneven-Aged</b>					
<b>ii) Single Tree Selection</b>	Complex Vertical Structure Dispersed Retention (IDF only)		Multi-storey <b>Sec 9.2.1</b>		Single Tree <b>Sec 4.2.1</b>
<b>iii) Group Selection</b>	Complex Horizontal Structure Group Retention	 <a href="#">Photo Images 5</a>	Clearcut Method <b>Sec 7 &amp; 8 OR</b> Small Scale Openings Method <b>Sec 9.3.5</b>		Group Selection <b>4.2.2</b>
<b>1c No Regen Obligation</b> <b>≥ 20 m<sup>2</sup> Interior</b> <b>≥ 40 m<sup>2</sup> Coast</b>					
<b>i) Intermediate Cut, (WF Interface &amp; Ecosystem Restoration)</b>	Complex Horizontal Structure Dispersed Retention	 <a href="#">Photo Images 6</a>	Commercial Thin <b>Sec 9.3.2.1</b>		No Regen Objectives <b>Sec 4.2.3</b>
<b>ii) Commercial Thin</b>	Complex Horizontal Structure Dispersed Retention	 <a href="#">Photo Images 7</a>	Commercial Thin <b>Sec 9.3.2.1</b>		No Regen Objectives <b>Sec 4.2.3</b>

**Footnotes:**

- 1) Definition of Clearcut: Openings are at least two tree heights in width (i).
- 2) Definition of Edge Effect: Is the forest influence (where openings are less than two tree heights in width, but > 10 m in wide) that occurs along the forest edge and produces an intermediate (or modified) microclimate (i).
- 3) Definition of Dispersed Retention: Residual treed portions with usually individually separated stems and are not independently mapped (< 0.25 ha. If aggregated)(ii).
- 4) Definition of Grouped Retention: Unharvested residual treed patches of aggregated individuals that are mappable (≥ 0.25 ha.) (ii).

- 5) Definition of Long term Residuals: *Residual trees with a reserve objective code other than Timber (i.e. WTP or CMT) and not available for a subsequent harvest entry until after the next rotational planning cycle – referred to as “reserves”(ii).*
- 6) Definition of Short term Residuals: *Residual trees with a reserve objective code of only Timber and available for a subsequent harvest entry prior to the end of the current rotational planning cycle (whether or not they are actually harvested) – referred to as “retention”(ii).*
- (i) [Silviculture Systems Handbook of BC - MoF 2003](#)

## Photo Images 1

Obligation Timber Priority **Single Entry Even –Aged** Complex Vertical Structure - **Dispersed Retention**









## Photo Images 2

Obligation Timber Priority **Multiple Entry Uneven-Aged Single Tree Selection** Complex Vertical Structure - **Dispersed Retention** - **IDF only**





### Photo Images 3

Obligation Timber Priority **Multiple Entry Uneven-Aged Group Selection** Complex Horizontal Structure - **Group Retention**

– **Small Patch ↑Edge Effect**

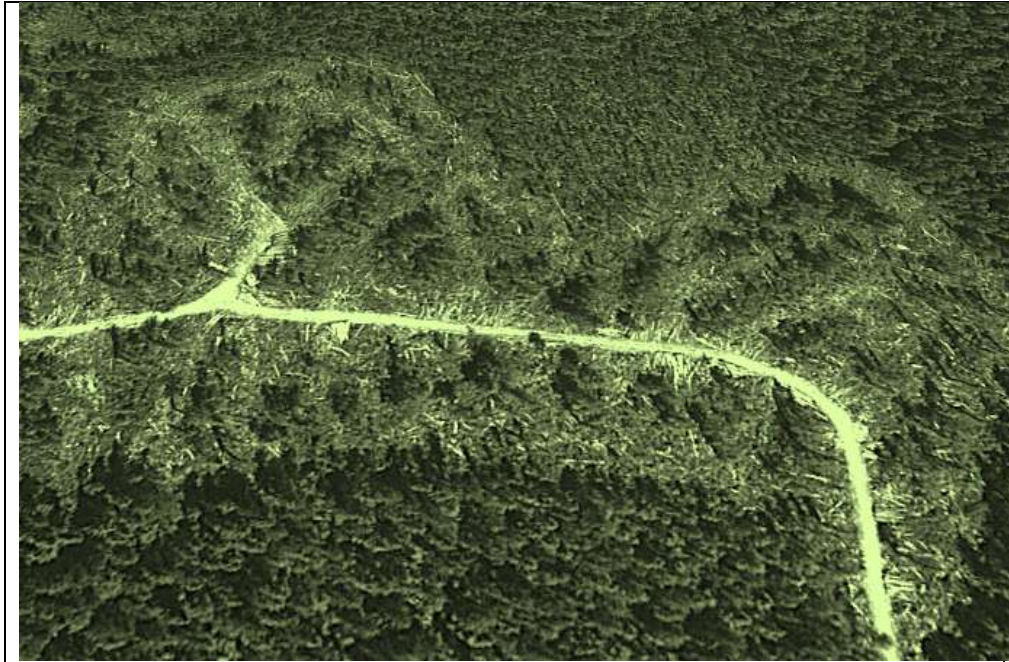




## Photo Images 4

**Obligation Non-Timber Priority** Single Entry Even-Aged **Complex Vertical Structure** - Dispersed Retention

**Coastal SEDRSS**





Interior DFP





## Photo Images 5

Obligation Non-Timber Priority **Multiple Entry Uneven-Aged Group Selection** Complex Horizontal Structure - **Group Retention**  
*Clear Cut Openings*





## Photo Images 6

No Obligation **Intermediate Cut** Complex Horizontal Structure - Dispersed Retention





## Photo Images 7

No Obligation **Commercial Thinning** Complex Horizontal Structure - Dispersed Retention

