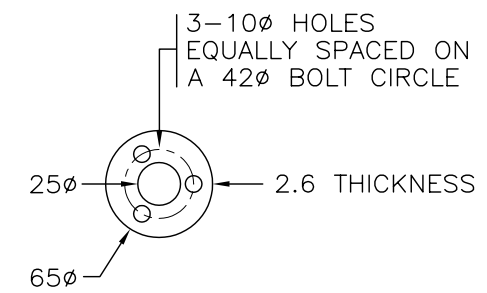
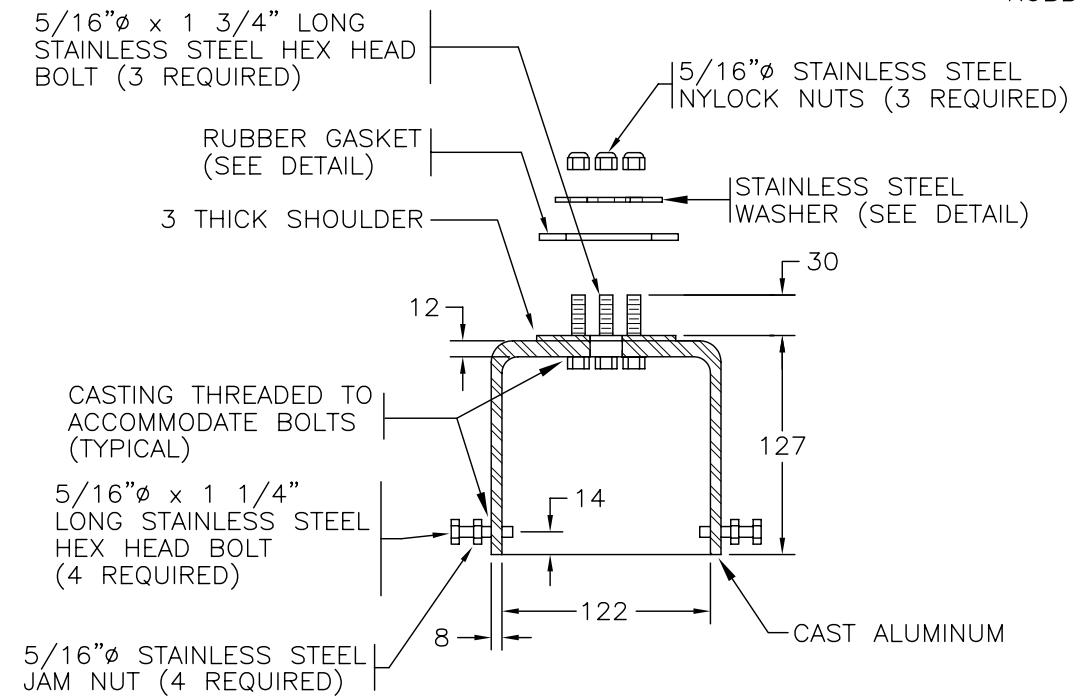


TOP VIEW

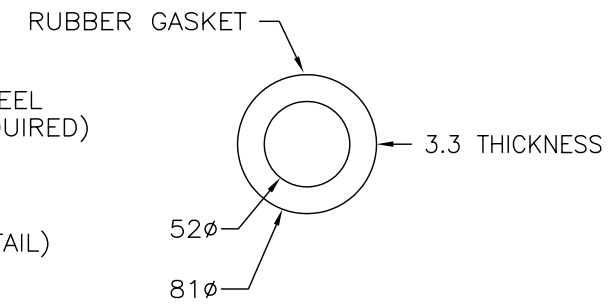


STAINLESS STEEL WASHER DETAIL



SECTION (A)

POST TOP ADAPTOR  
(SN1673)



RUBBER GASKET DETAIL

NOTES

1. SEE MATERIAL STANDARD SPECIFICATIONS SECTION 604 - TRAFFIC SIGNAL MOUNTING HARDWARE FOR ADDITIONAL INFORMATION.
2. ALL CAST ALUMINUM PARTS SHALL BE PAINTED GREEN AFTER FABRICATION.
3. ALL DIMENSIONS ARE IN MILLIMETRES UNLESS OTHERWISE NOTED.
4. 'SN' DENOTES MINISTRY STOCK NUMBER.
5. ALL BOLTS SHALL BE FULLY THREADED.

NOT TO SCALE

TRAFFIC SIGNAL MOUNTING HARDWARE  
POST TOP ADAPTER DETAILS