



BCEDA

BC Economic Development Association

BC Economic Atlas



BC Economic Atlas

What is BCEA?

BCEA is not BCEDA with the “D” Missing

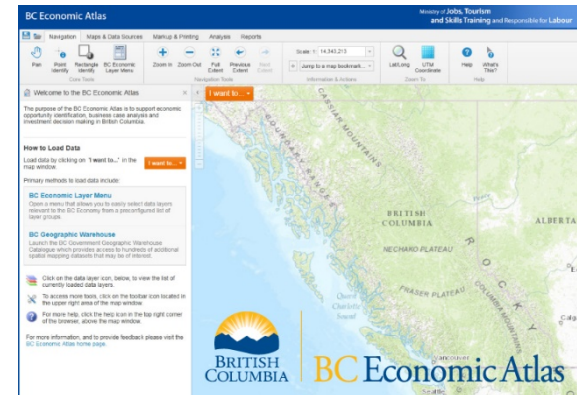
It is more powerful

WHAAAA!?!?



BCEA

- Economic Development is a competitive game. Having access to detailed information on a community or region is key to success
- BCEA is an important piece of the information toolbox for economic developers in dealing with investors, industry and government



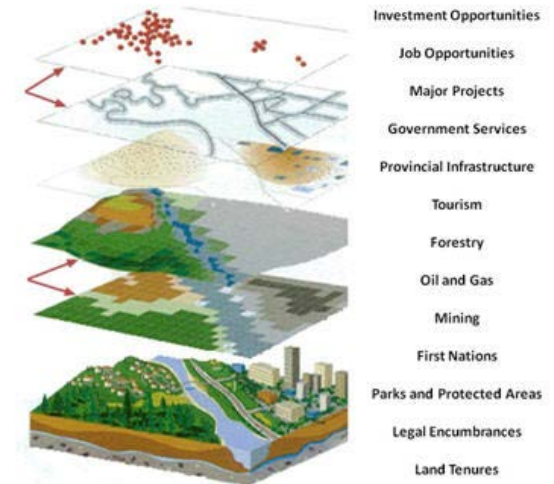
GIS Planning

- 97% of initial site selection screening is conducted on-line now, so it's critical that communities offer investors a comprehensive interactive website
- By providing the right information online, EDOs can provide themselves a 150% advantage when businesses are evaluating a long-list of locations.



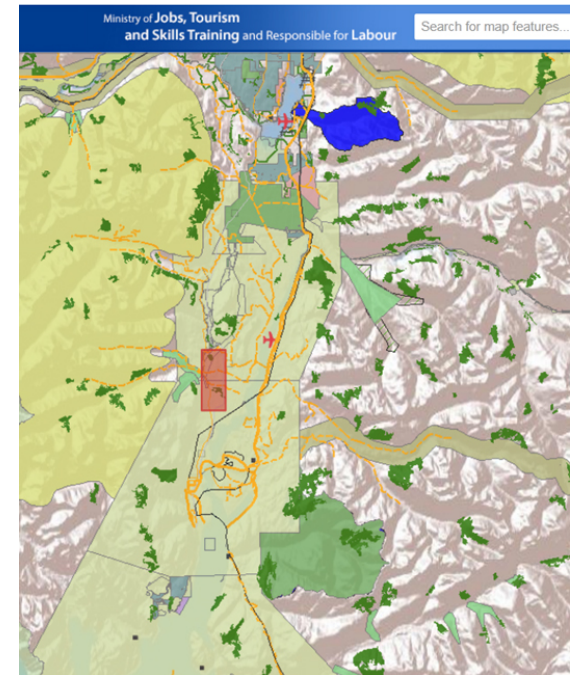
More than just Business Attraction

- BCEA can help economic developers in planning, researching, and analysing projects and proposals
- Can produce maps and project files that can be shared
- Users can access provincial data through a single user interface
- The tool can assist in First Nation “consultation” by identifying First Nations in an interest area
- Combines information from many sources in one place



More than just Business Attraction

- Highlight major projects in your geographic region
- The tool enables you to analyze, display, and share local economic development/land attributes in comparison with provincial data
- Ability to showcase relevant information from local governments (ie: Datasets and Zoning details), as well as direct links to your sites
- BCEA has been designed to allow for the creation of new tools when required



BCEA

- BCEDA has been a voice encouraging the creation of new tools to assist economic developers
- BCEDA has heard from Site Selectors and others that BC needs to do more to provide information to the investment community – BCEA will be a major part of achieving that goal
- The BCEA helps to make BC a more competitive location and at the same time allows you to highlight your community/region
- We encourage you to learn and to use the site to your community or regions advantage



BCEDA

Contact:

Dale Wheeldon

dwheeldon@bceda.ca





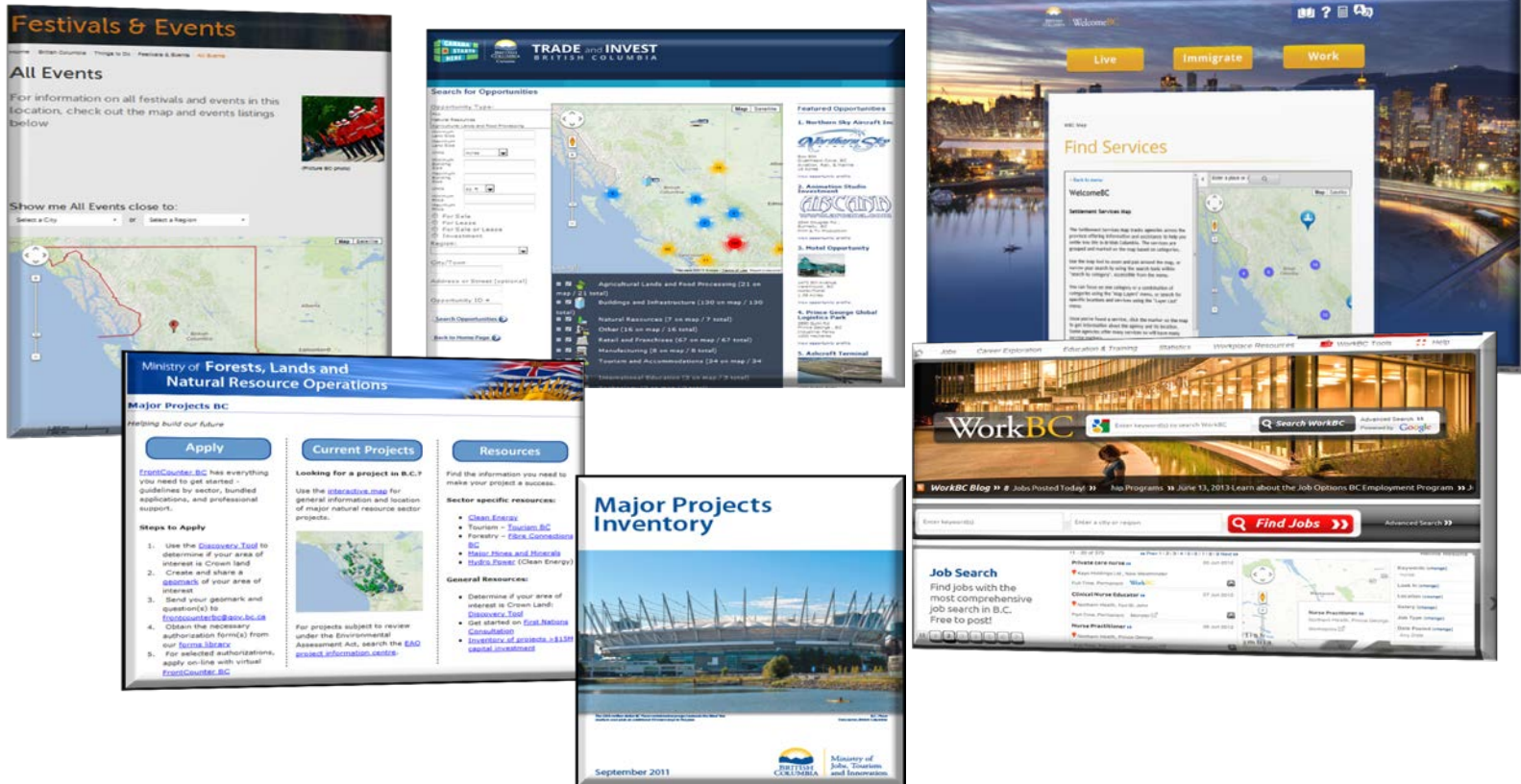
BC Economic Atlas

BCEA WEBINAR

Supporting business and investment decision-making in B.C.



Access to economic sector data now....



BC Economic Atlas makes all this information available through a user-friendly, publically available web-based mapping application

Enhances the investor experience by improving access to information...

Before

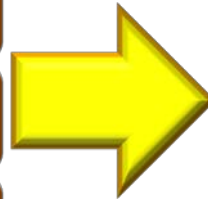
Numerous information channels

Multiple data formats

Information not spatialized

Difficult to view information together

Protracted conversations between clients/decision-makers



Now

Single point of access

Centrally stored in a data warehouse

Information viewed on a web-map

Interactive display and analysis

Streamlined conversations between clients/decision-makers



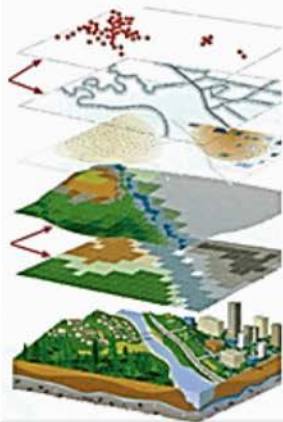
How does the BC Economic Atlas Work?

Datasets are managed by data custodians in business areas.

DataBC is the data conduit
(BC Geographic Warehouse is the corporate repository for geographic data)

BCEA extracts select data from Data BC based on investor queries and presents it in a user friendly viewer

Investors access information on BC quickly and easily to develop business cases and make decisions.



Investment Opportunities
Job Opportunities
Major Projects
Government Services
Provincial Infrastructure
Tourism
Forestry
Oil and Gas
Mining
First Nations
Parks and Protected Areas
Legal Encumbrances
Land Tenures

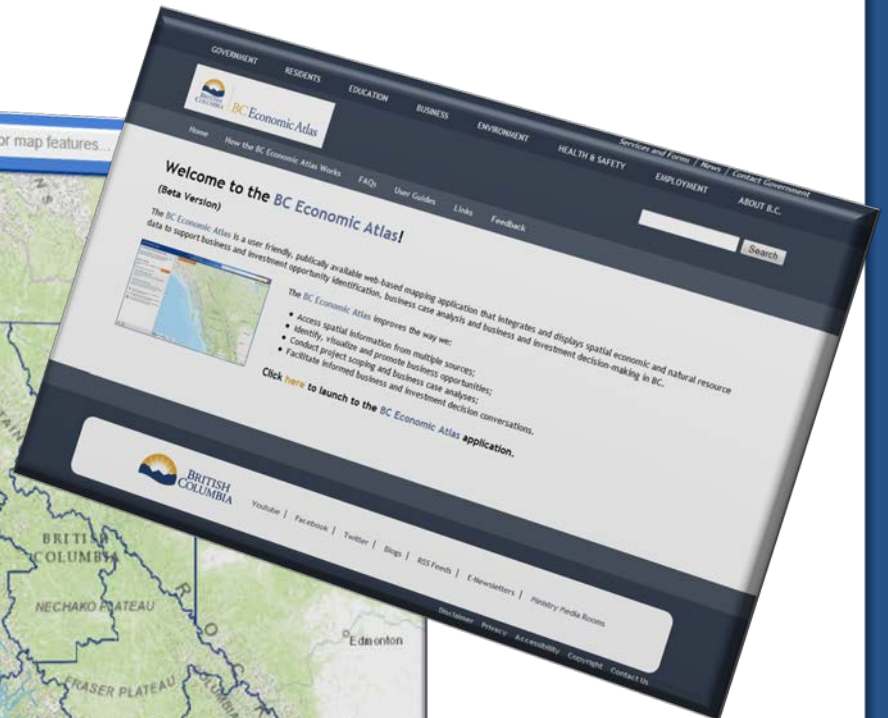
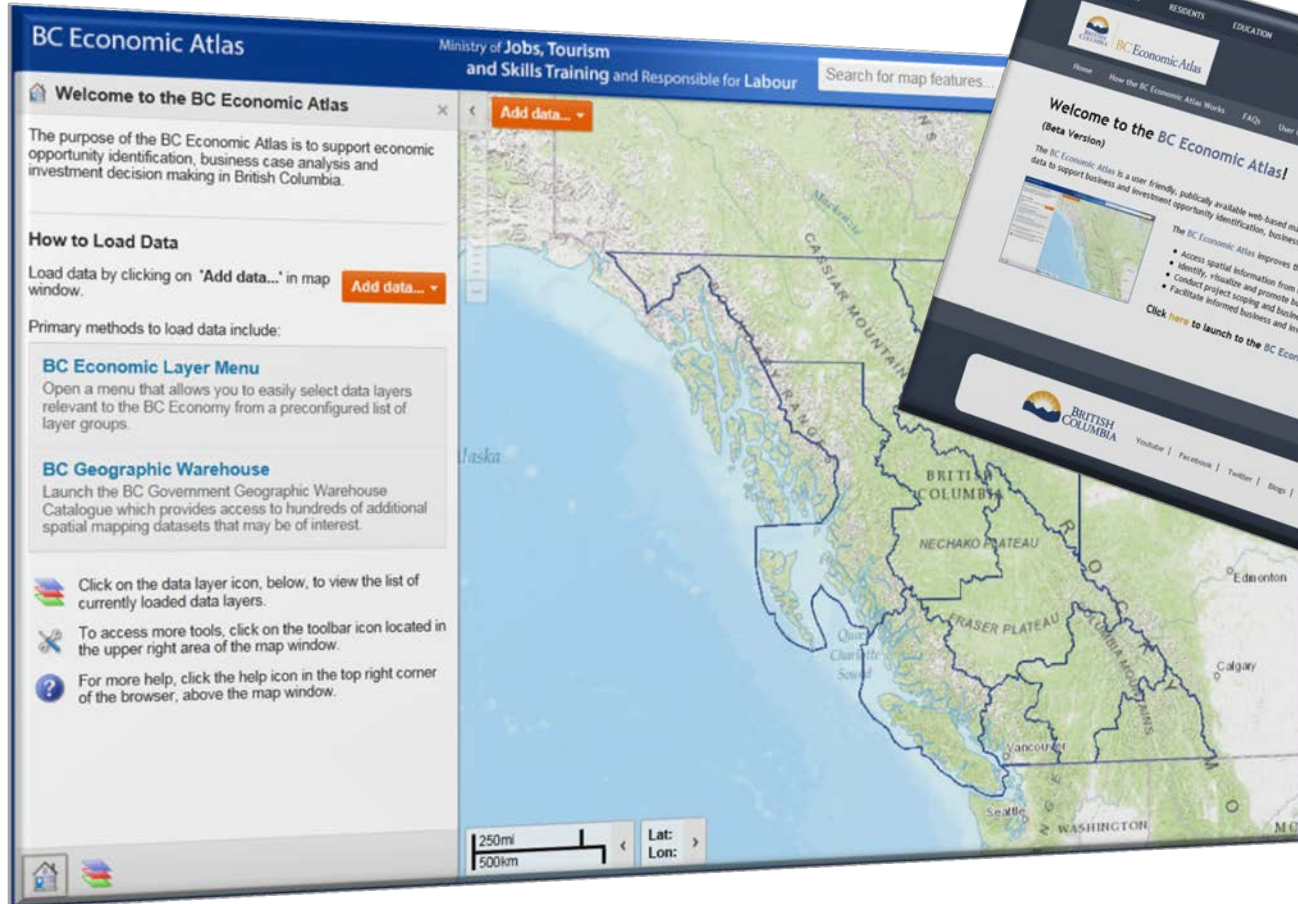


Open source data can also readily be added by users



Launch BC Economic Atlas

www.gov.bc.ca/economicatlas

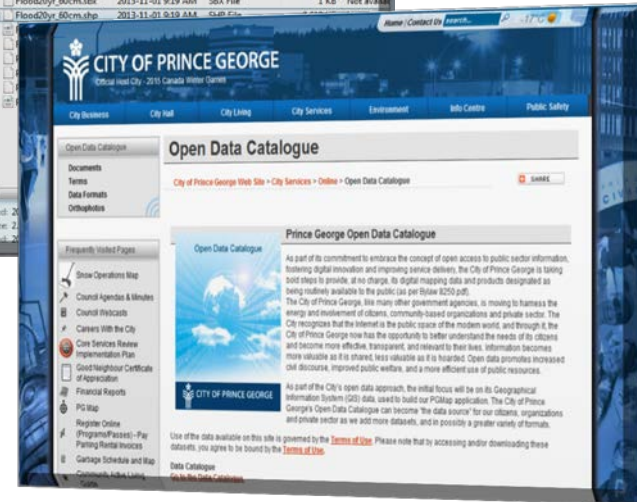
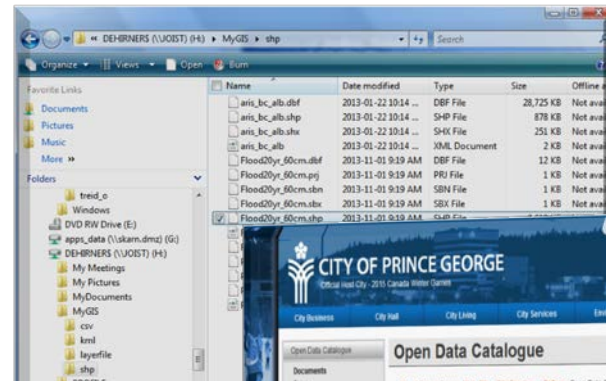
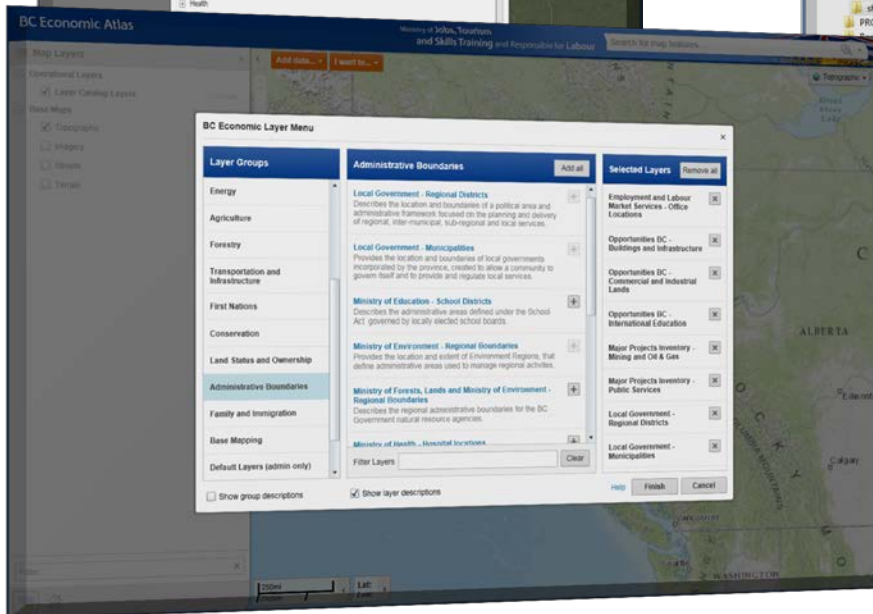
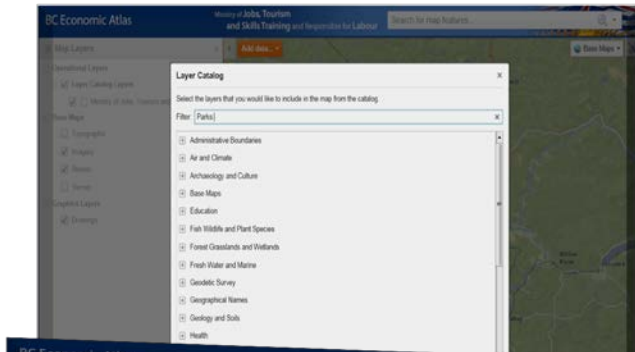


Add Relevant Data in Multiple Ways...



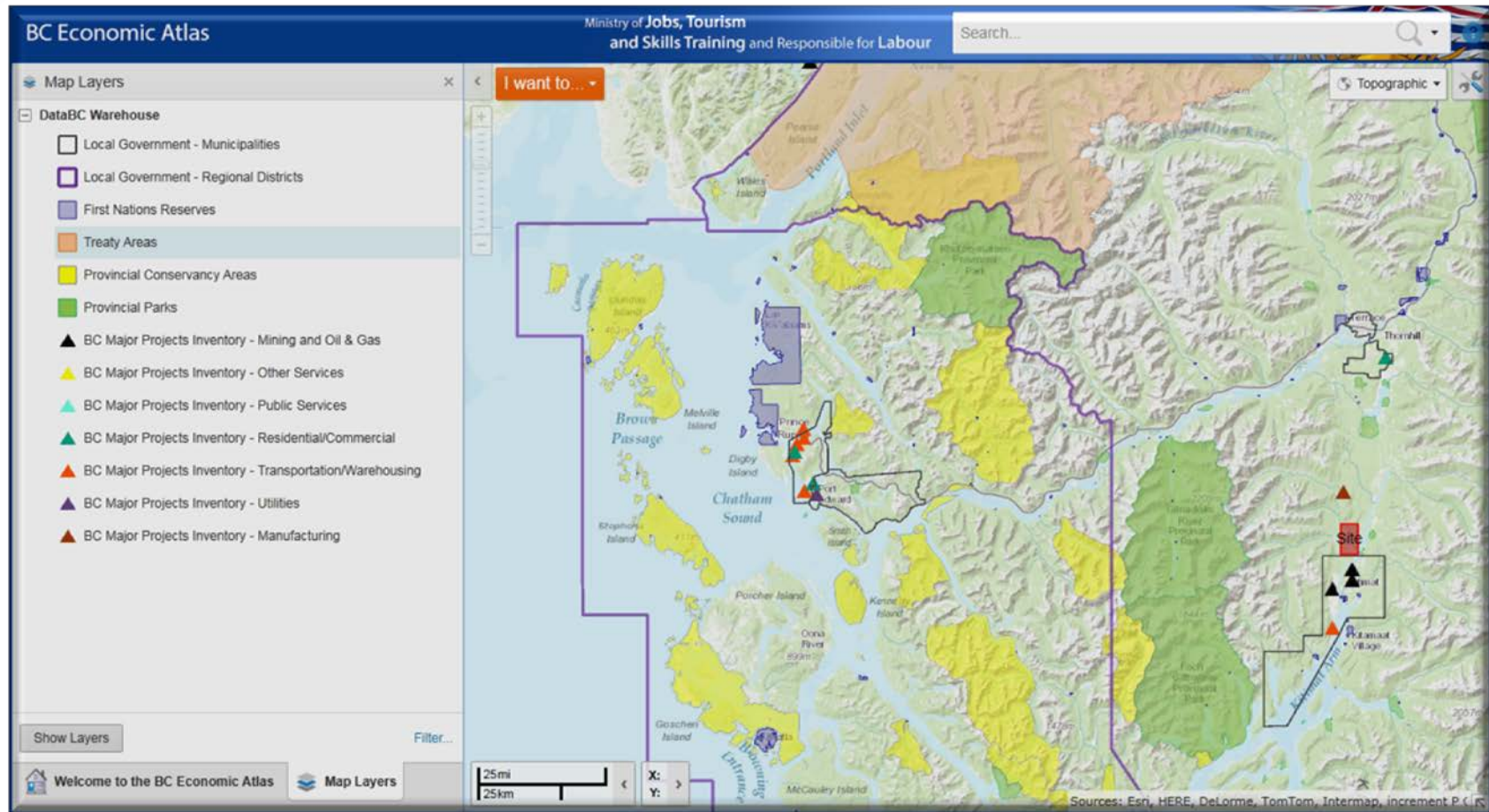
Data BC Catalogue

Private and Open Data Sources



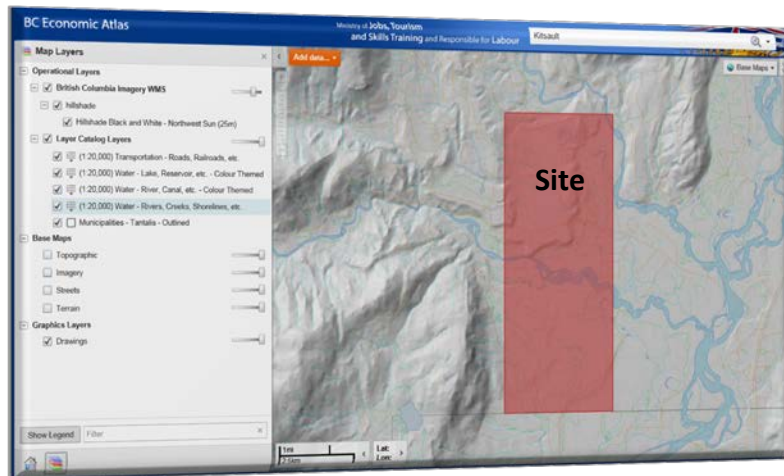
BC Economic Atlas Layer Menu

Show Regional Overviews...

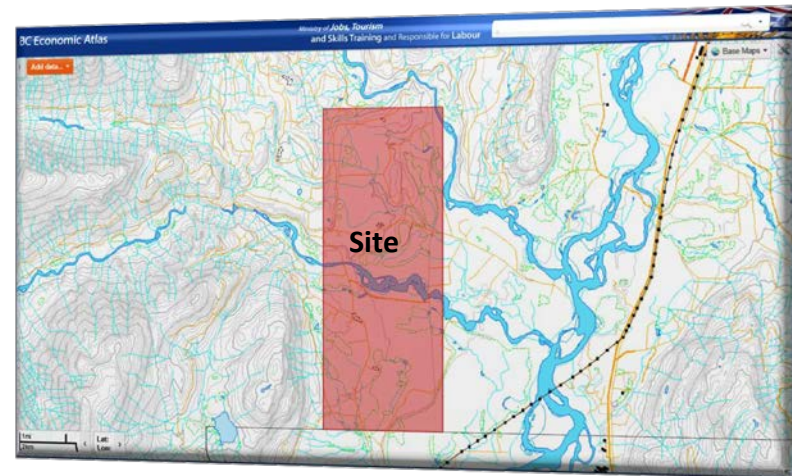


Investigate Key Site Criteria...

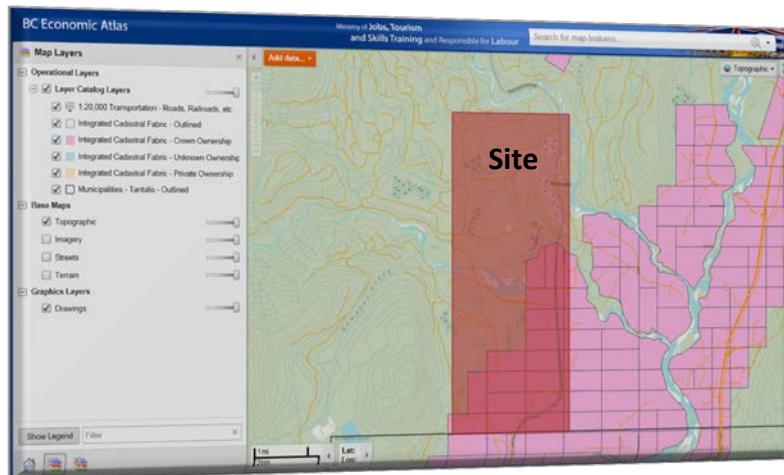
Site Topography



Infrastructure - Transportation

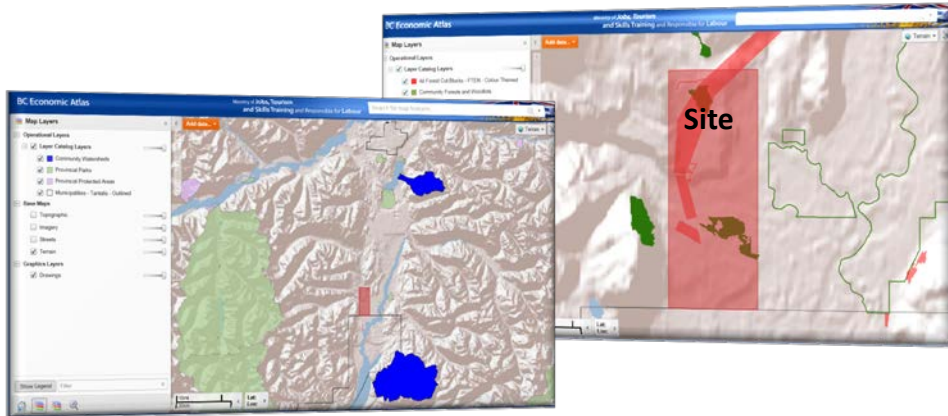


Land Ownership

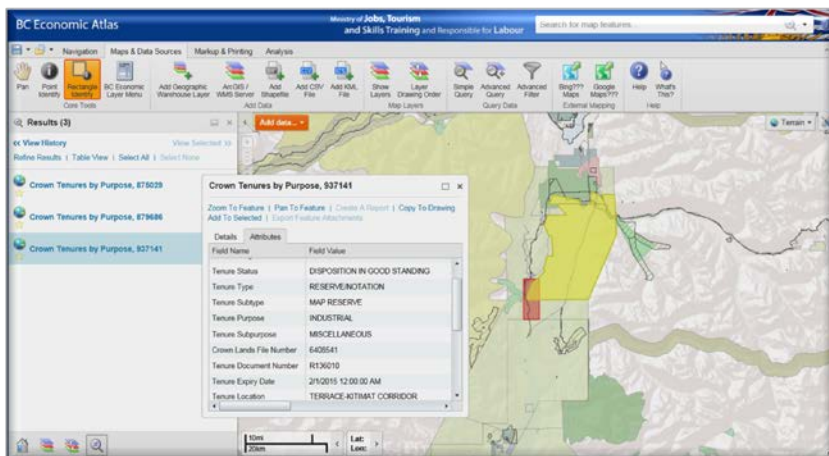


Identify Encumbrances...

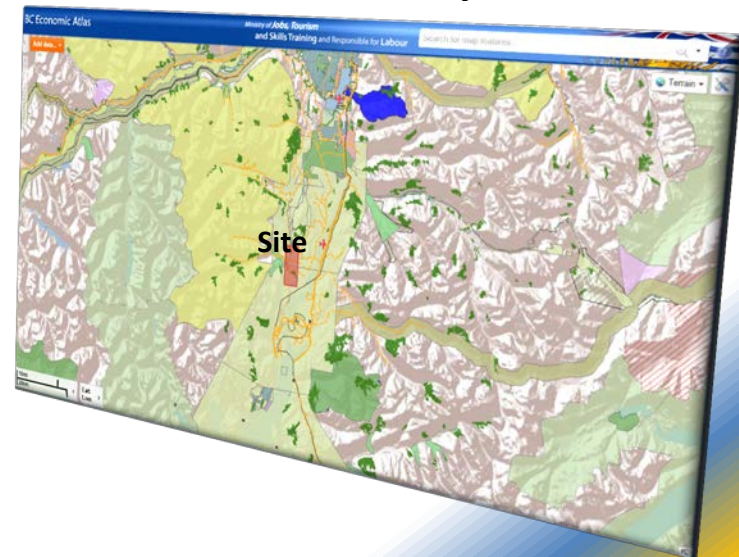
Old Growth Management Areas
Community Forests
Agricultural Land Reserves
Forestry Cut Blocks
Parks and Protected Areas
Community Watersheds
Conservation Lands



Tenures & Tenure Applications



Cumulative Perspective



DCE Economic Atlas

Ministry of Jobs, Tourism and Skills Training and Responsible for Labour

Navigation Maps & Data Sources Markup & Printing Analysis

Display for: [] Add as Drawing Measurement Info Units

Perimeter: 35,944.00 Meters (mi) Area: 85,937.02 m²

Print Coordinates

Location Information

Measurement Tools

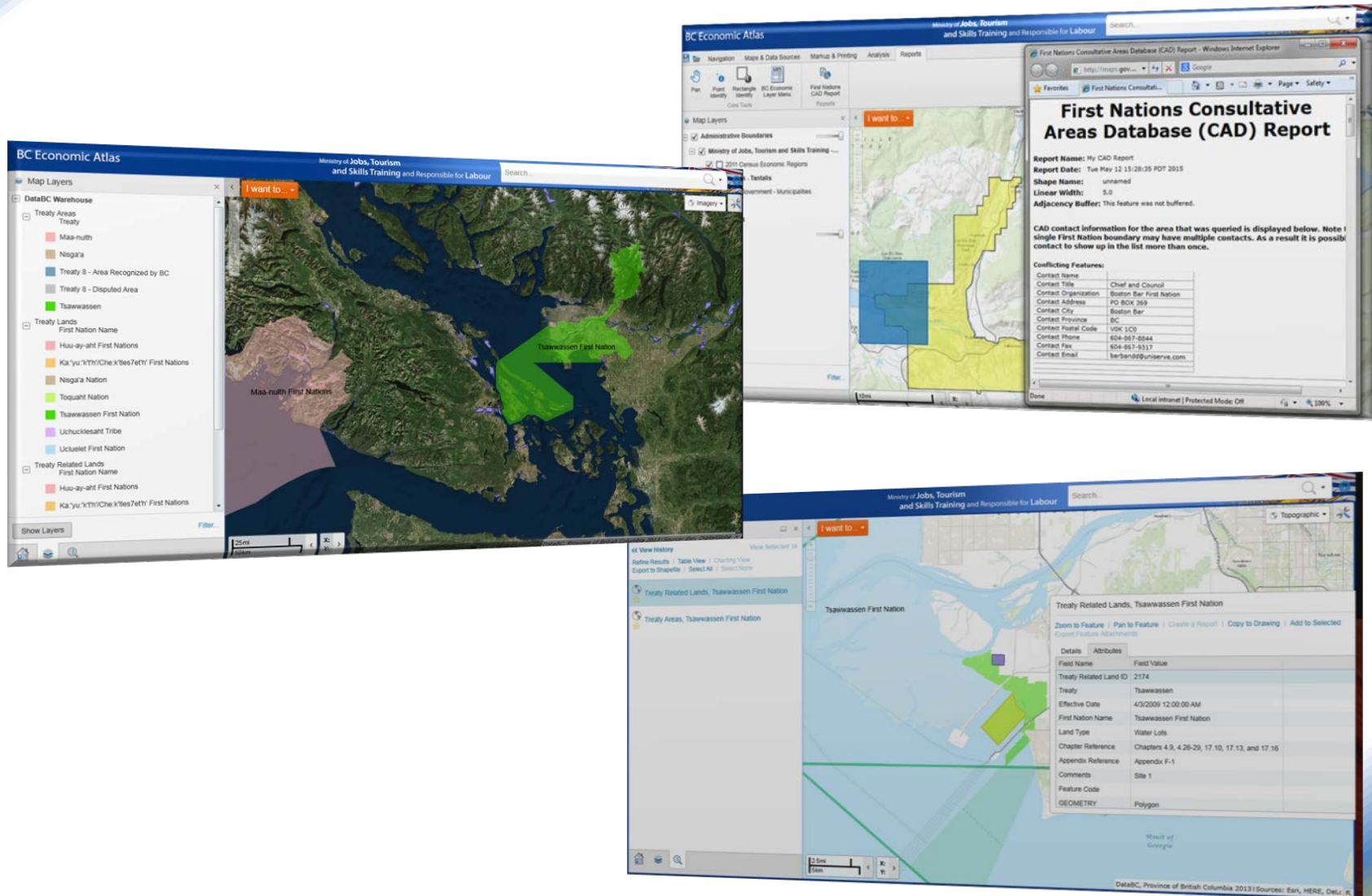
Results (36)

View History View Selected Styling Results List View Zoom to All Identify Export to CSV Import ID Select None

Global Growth Management Areas - Legal: Colour Filled	BCTC Transmission Lines	Farmed Managed Landlines - Current (PTEN): Colour Themed	Tenures by Purpose	Tenure Subtypes	
Internal Identifier	Tenure Status	Tenure Type	Tenure Purpose	Tenure Subpurpose	
677710	TENURE DISPOSITION IN GOOD STANDING	LICENCE	LICENCE OF OCCUPATION	COMMERCIAL RECREATION	HELI SHO
677361	TENURE DISPOSITION IN GOOD STANDING	LICENCE	LICENCE OF OCCUPATION	INSTITUTIONAL	MISCELLANEOUS
260309	TENURE DISPOSITION IN GOOD STANDING	RESEMINENTATION	MAP RESERVE	ENVIRONMENT- CONSERVATION & RECR	UNPRESERVATION
260130	TENURE DISPOSITION IN GOOD STANDING	RESEMINENTATION	MAP RESERVE	QUARRYING	SAND AND GRAVEL
260504	TENURE DISPOSITION IN GOOD STANDING	RESEMINENTATION	MAP RESERVE	QUARRYING	SAND AND GRAVEL
903577	TENURE DISPOSITION IN GOOD STANDING	RESEMINENTATION	NOTATION OF INTEREST	FIRST NATIONS	INTERM MEASURES
264490	TENURE DISPOSITION IN GOOD STANDING	RIGHT-OF-WAY	STATUTORY RIGHT OF WAY/EASEMENT	UTILITY	GAS AND OIL PIPELINES
263966	TENURE DISPOSITION IN GOOD STANDING	RESEMINENTATION	MAP RESERVE	ENVIRONMENT- CONSERVATION & RECR	FOREST MANAGEMENT
260261	TENURE DISPOSITION IN GOOD STANDING	RIGHT-OF-WAY	STATUTORY RIGHT OF WAY/EASEMENT	UTILITY	GAS AND OIL PIPELINES
266121	TENURE DISPOSITION IN GOOD STANDING	RESEMINENTATION	MAP RESERVE	QUARRYING	SAND AND GRAVEL
273414	TENURE DISPOSITION IN GOOD STANDING	RESEMINENTATION	MAP RESERVE	QUARRYING	SAND AND GRAVEL
260662	TENURE DISPOSITION IN GOOD STANDING	RIGHT-OF-WAY	STATUTORY RIGHT OF WAY/EASEMENT	UTILITY	ELECTRIC POWER LINES
261579	TENURE DISPOSITION IN GOOD STANDING	RIGHT-OF-WAY	STATUTORY RIGHT OF WAY/EASEMENT	UTILITY	ELECTRIC POWER LINES
274233	TENURE DISPOSITION IN GOOD STANDING	MAP RESERVE	MAP RESERVE	ENVIRONMENT- CONSERVATION & RECR	FOREST MANAGEMENT
266010	TENURE DISPOSITION IN GOOD STANDING	RESEMINENTATION	NOTATION OF INTEREST	ENVIRONMENT- CONSERVATION & RECR	SCIENCE MEASUREMENTS

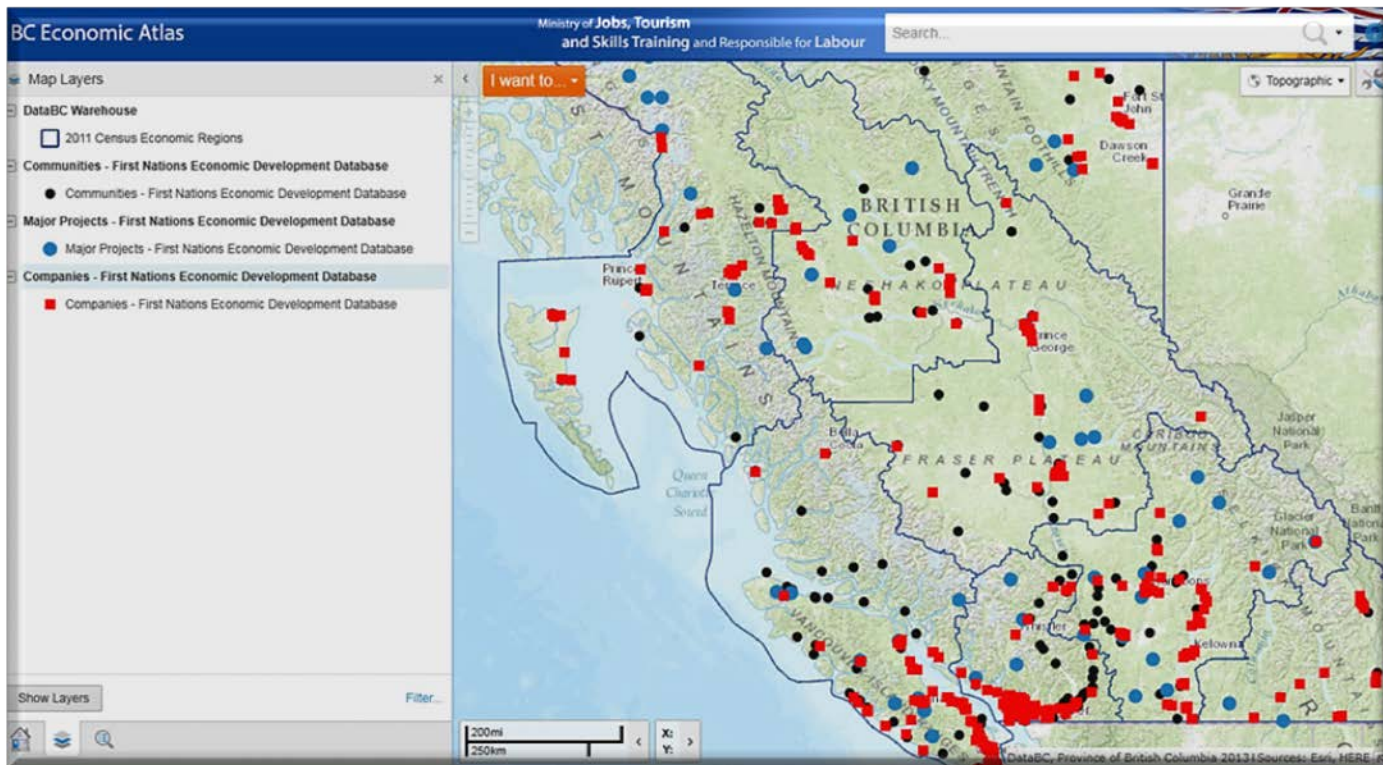
[illegible]

Discover First Nations Information





Explore information about First Nations Communities, companies, and economic development agreements and their relationship to major projects



Just some examples of how **BC Economic Atlas** can support...



Identification,
visualization and
promotion of
business
opportunities;



Project scoping and
business case
analysis;



Facilitation of
informed
conversations
amongst project
proponents,
business owners,
investors, First
Nations and
government
decision-makers





www.gov.bc.ca/economicatlas

Please provide feedback or
questions:

bcea@gov.bc.ca

Thank You!