



APPENDIX 5

Applecore™ Core Descriptions

(select to view individual core data)

Core Logs

Core Log #1
Core Log #2
Core Log #3
Core Log #4
Core Log #5
Core Log #6
Core Log #7
Core Log #8
Core Log #9
Core Log #10
Core Log #11
Core Log #12
Core Log #13
Core Log #14
Core Log #15
Core Log #16
Core Log #17

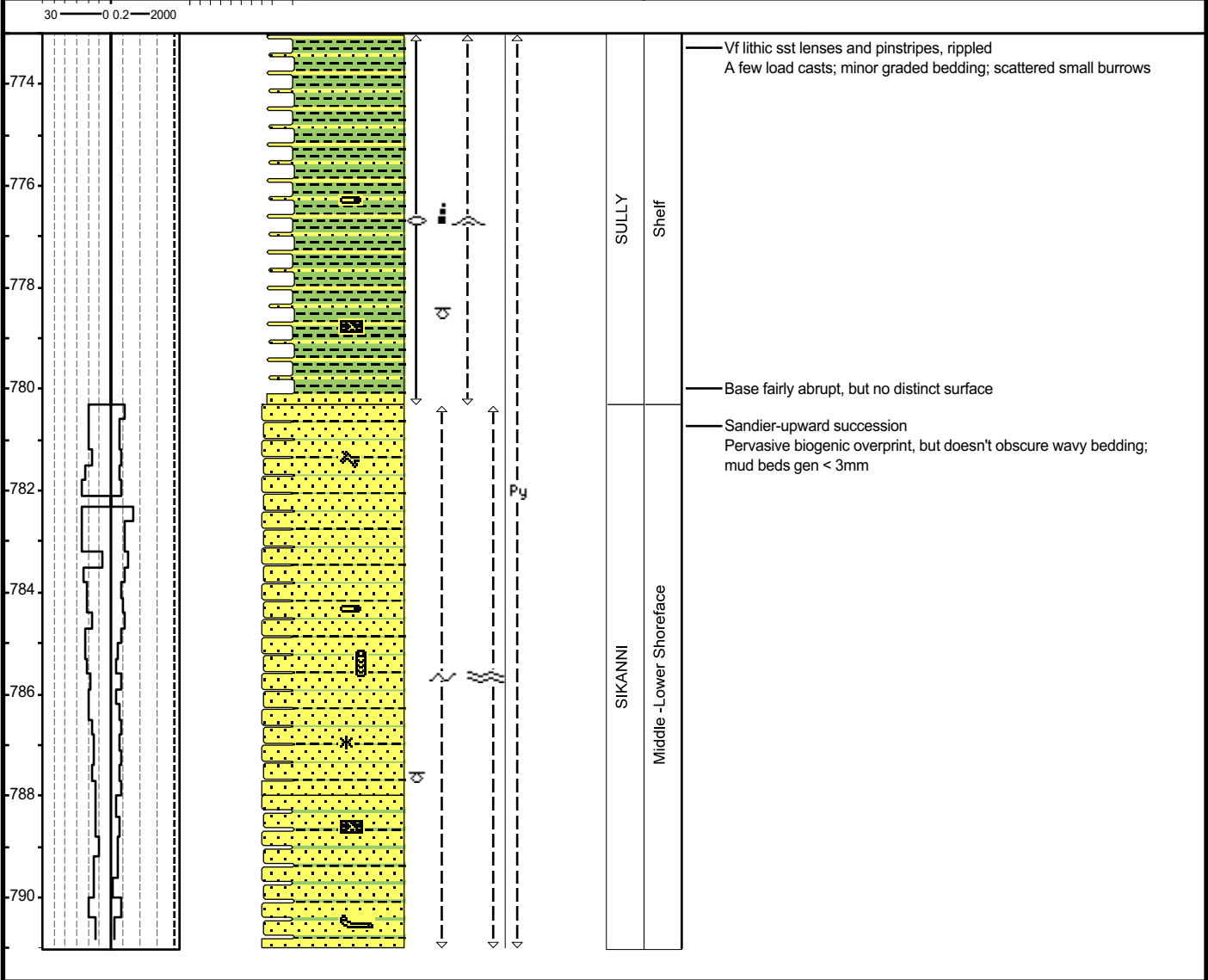
Imperial Uno-Tex Windsor a-3-B / 93-P-1								
Remarks: CARDIUM FORMATION								
Core #1: 921 - 933.2 (Rec. 10.7 m) Core #2: 933.2 - 951.2 (Rec. 17.4 m)						CORE LOG #1		
4" core, slabbed Core #1 not logged - All non-marine siltstones and mudstones, like top of Core #2								
METRES	POROSITY	PERMEABILITY	GRAIN SIZE	PHYSICAL STRUCTURES	ACCESSORIES	FACIES ASSOCIATION	DEPOSITIONAL ENVIRONMENT	
			cobble pebble granule sand silt clay					
30 — 0.2 — 2000			v cmf v					
							REMARKS	
934						Bac.	Rubbled silty mudstone and muddy siltstone Base rubbled, but abrupt	
936						Upper Shoreface	Muddy wisps and partings in top 10 cm; rooted and carbonaceous Irregular mud lenses and wavy beds; decreasing to base	
938							Scattered Macaronichnus	
940							More heterogeneous to base - mud and carbonaceous partings, poorer sorting - some finer sands, granule lenses Sharp loaded base	
942						CARDIUM	Homogeneous; swaley cross-stratified, well laminated More argillaceous, minor sideritic intervals, scattered mud chip horizons to base	
944							Middle Shoreface	
946								
948					Sid			
950								

Suncor Bougie
a-85-A / 94-G-15

Remarks: SIKANNI FORMATION	
Core #1: 773 - 791.2 (Rec. 18.2 m)	CORE LOG #2
3.5" core, slabbed	

		GRAIN SIZE	\$			COMMENT
--	--	------------	----	--	--	---------

METRES					
POROSITY					
PERMEABILITY					
GRAIN SIZE cobble pebble granule sand silt clay vc m f v	PHYSICAL STRUCTURE	ACCESSORIES	FACIES ASSOCIATION	DEPOSITIONAL ENVIRONMENT	REMARKS



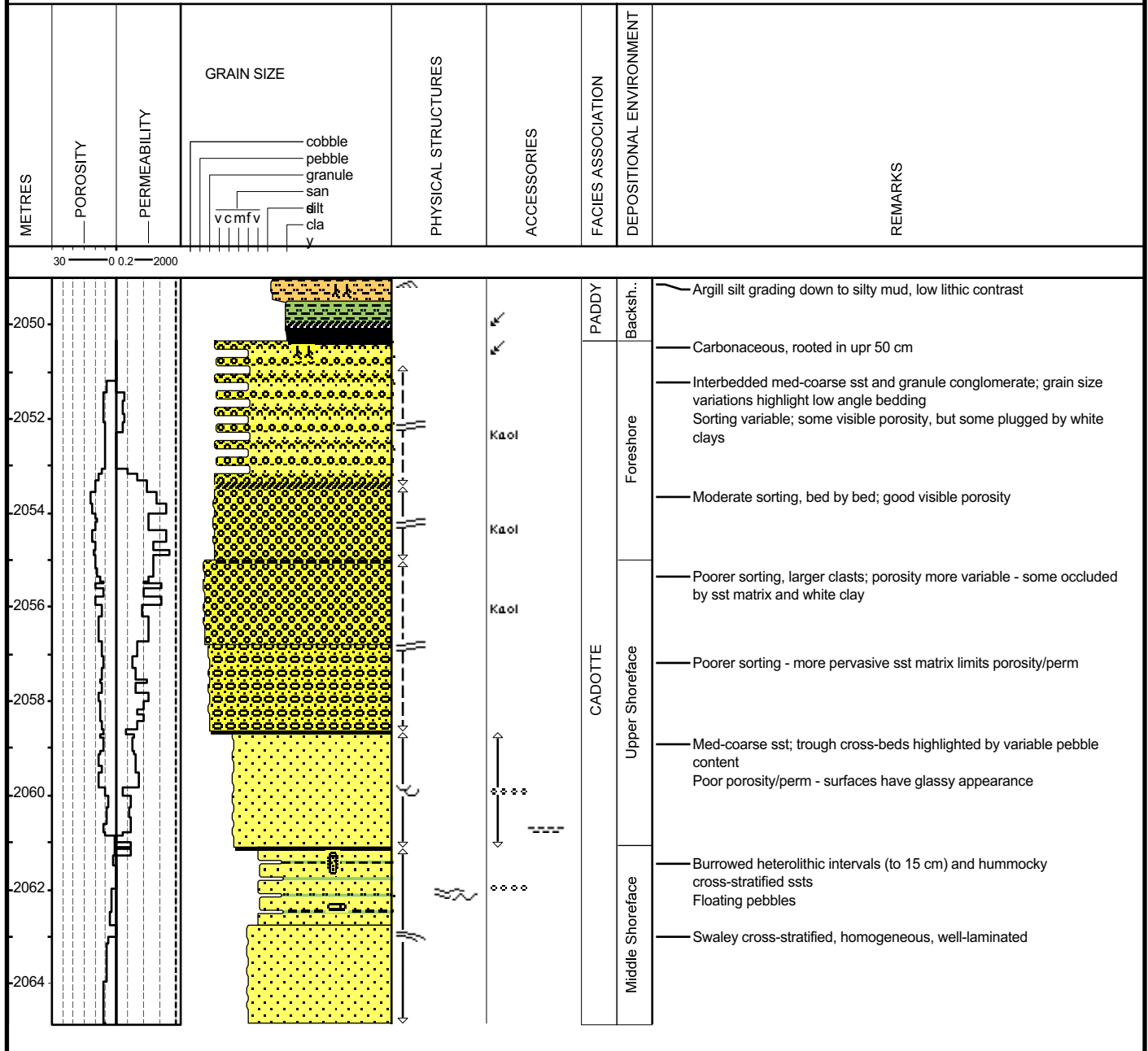
CanHunter Noel
b-24-A / 93-P-7

Remarks: CADOTTE MEMBER
Conglomeratic Shoreface
(High-quality reservoir)

CORE LOG #3

Core #1: 2049 - 2067 (Rec. 15.85 m)

4" core, slabbed



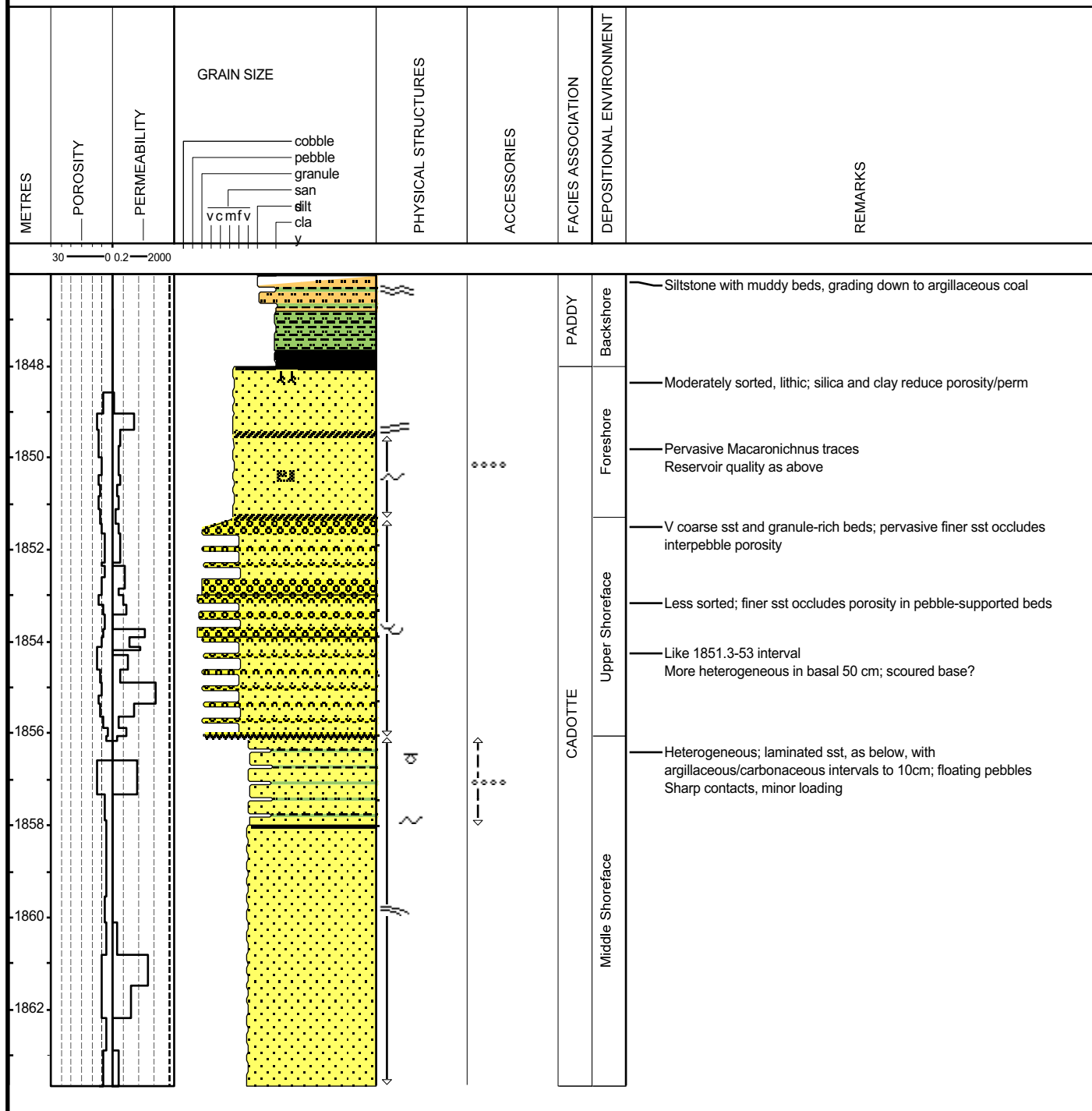
CanHunter et al Jackpine
c-14-F / 93-P-7

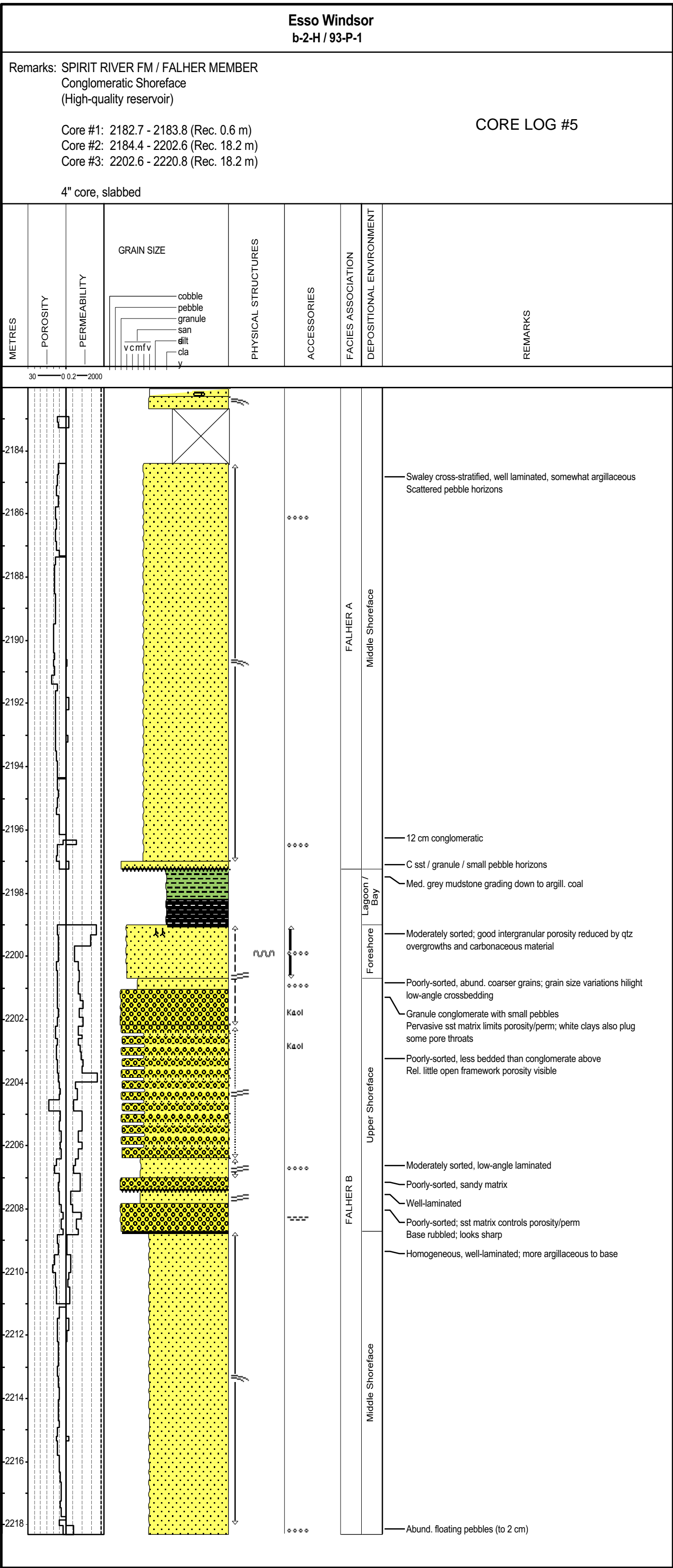
Remarks: CADOTTE MEMBER
Sandy Shoreface
(Poor reservoir quality)

CORE LOG #4

Core #1: 1846 - 1864 (Rec. 17.66 m)

4" core, slabbed





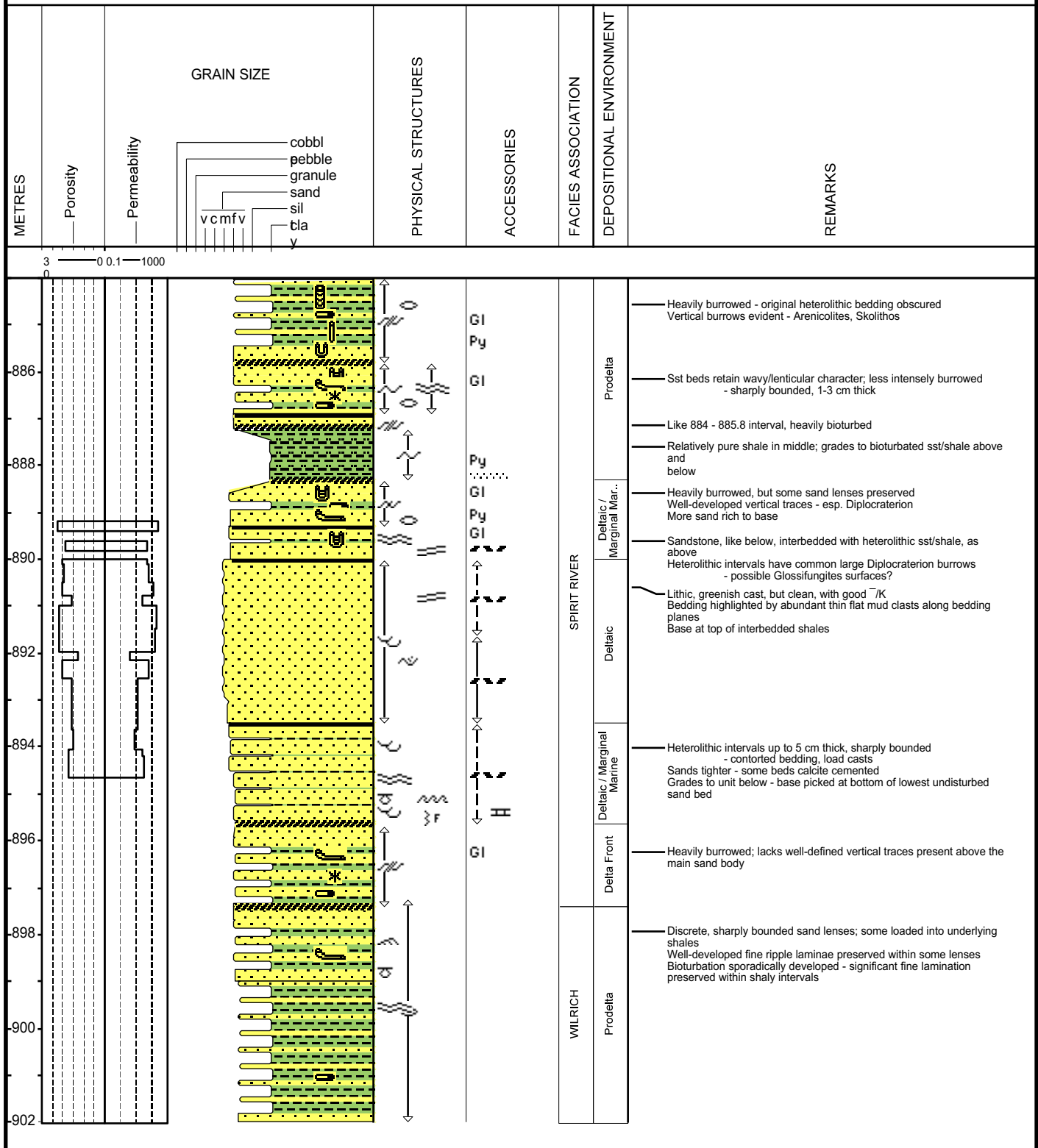
Anderson Pickell
c-61-J / 94-H-3

Remarks: SPIRIT RIVER FM / NOTIKEWIN MEMBER
Northern Delta / Shoreface

Core #1: 884 - 902 (Rec. 17.95 m)

CORE LOG #7

Clean, unslabbed

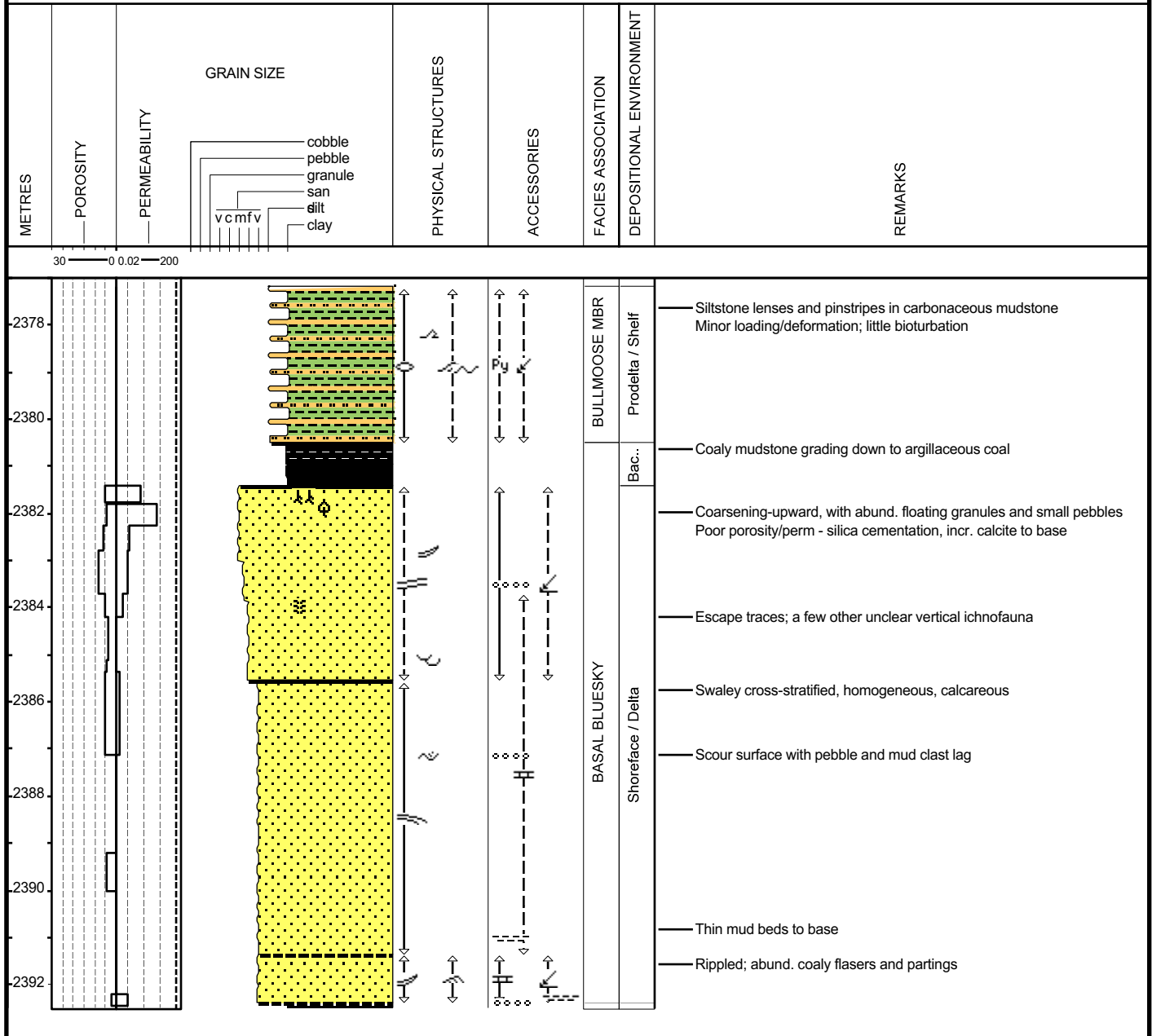


Remarks: BLUESKY FORMATION
Basal Unit

Core #1: 2377.2 - 2381.8 (Rec. 4.55 m)
Core #2: 2381.8 - 2393 (Rec. 10.7 m)

CORE LOG #8

4" core, unslabbed, fairly clean



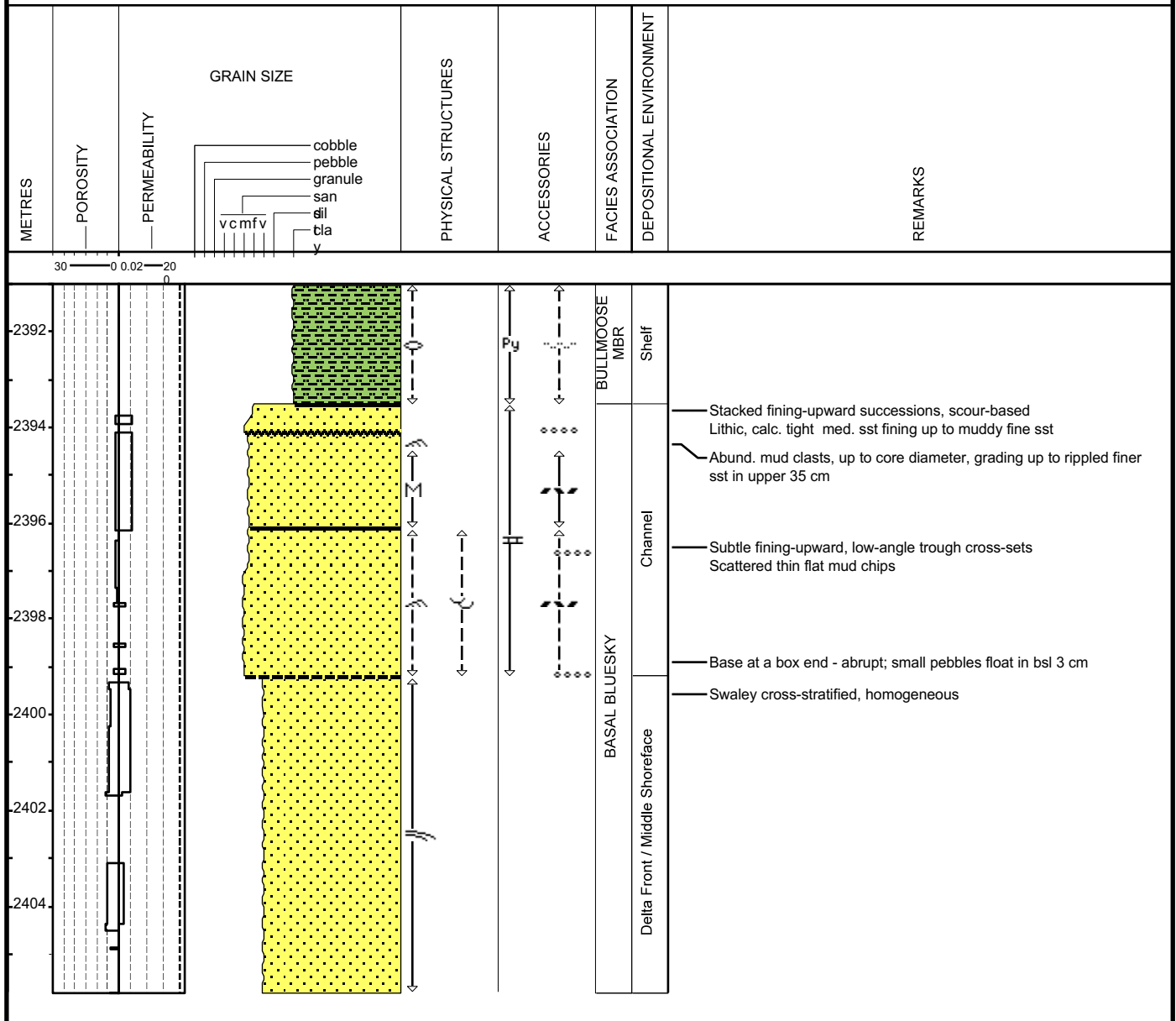
CanHunter et al Noel
b-18-E / 93-P-8

Remarks: BLUESKY FORMATION
Basal Unit

Core #3: 2388 - 2406.2 (Rec. 17.8 m)

CORE LOG #9

4" core, slabbed



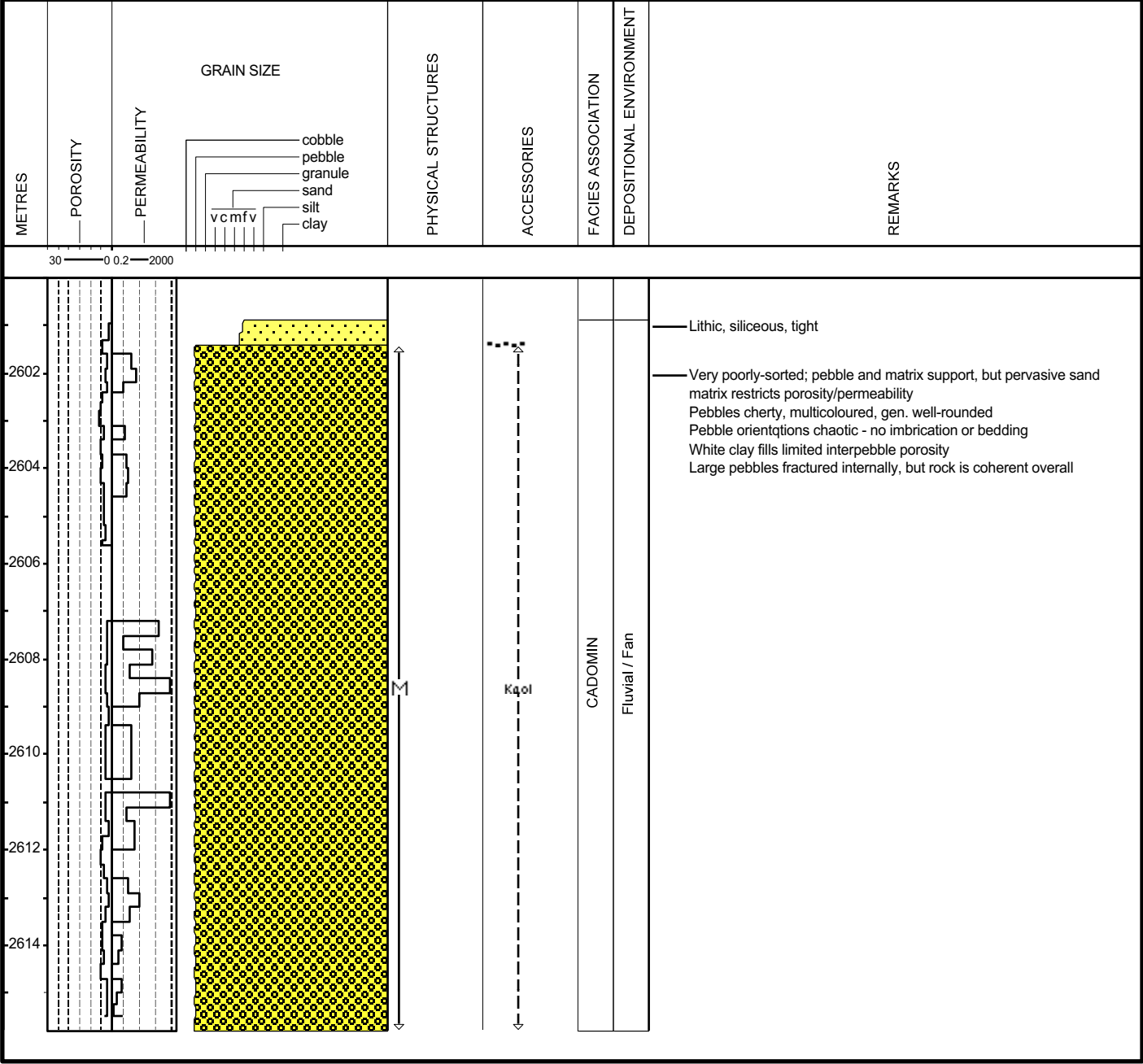
CanHunter Esso Steeprock
d-68-K / 93-P-1

Remarks: CADOMIN FORMATION

Core #7: 2596 - 2606.8 (Rec. 9.6 m)
Core #8: No Recovery
Core #9: 2606.9 - 2610.5 (Rec. 2.7 m)
Core #10: 2610.5 - 2617.4 (Rec. 5.3 m)

CORE LOG #12

4" core, slabbbed
Upper, post-Cadomin siltstone and mudstone not logged



Suncor et al Blueberry c-32-D / 94-A-13

Remarks: BUICK CREEK FORMATION (Minnes Group)	
Core #2: 4226 - 4238 (Rec. 12')	
Core #3: 4240 - 4246 (Rec. 6')	
Core #4: 4246 - 4266 (Rec. 20')	
Core #5: 4266 - 4284 (Rec. 17')	
Core #6: 4284 - 4309 (Rec. 25')	
Core #7: 4309 - 4356 (Rec. 45')	
No core analysis	

<div> <div>FEET</div> <div> <div>GRAIN SIZE</div> <div> <div> <div>cobble</div> <div>pebble</div> <div>granule</div> <div>sand</div> <div>silt</div> <div>cla</div> <div>v</div> </div> <div>vc mfv</div> </div> </div> </div>	PHYSICAL STRUCTURES	ACCESSORIES	FACIES ASSOCIATION	DEPOSITIONAL ENVIRONMENT	REMARKS
--	---------------------	-------------	--------------------	--------------------------	---------

Core	Interval (m)	Stratigraphic Unit	Environment	Description
BUICK CREEK	4230 - 4235	Fluvial/Deltaic	BUICK CREEK	Inclined fractures at top with slickensides; pseudostylolites throughout; silica cemented.
	4235 - 4240			No carbonaceous material; kaolinite cement?
	4240 - 4245			Very similar to sandstone in core 2; pebble lag at the base 3 cm-thick with 3-5 cm blebs.
	4245 - 4250			Very carbonaceous; tightly silica-cemented
	4250 - 4255			Same as above; lower contact not visible.
	4255 - 4260			2-10mm lag ? deposit; quartz pebbles; angular contact only 3cm thick.
	4260 - 4265			Upper medium to mid coarse grained; pebbles 2-10mm throughout and cm-sized mudstone clasts.
	4265 - 4270			Coaly; lower contact not visible.
	4270 - 4275			Upper fine to lower medium grained; mud rip ups in upper portion; pseudostylolites; mud drapes on cross bed foresets 5' below the top; more massive below.
	4275 - 4280			Upper fine to lower medium grained; very similar to above; cm-sized mudstone clasts and mud foresets in the upper 6".
BUICK CREEK	4280 - 4285	Fluvial/Deltaic	BUICK CREEK	Very similar to above; lower 7' is mid medium- to upper coarse-grained that is friable
	4285 - 4290			
	4290 - 4295			
	4295 - 4300			
	4300 - 4305			
	4305 - 4310			
	4310 - 4315			Very similar to above but slightly finer.
	4315 - 4320			Quartz and coal pebbles 2-15mm in diameter; medium grained sandstone matrix; 3" thick.
	4320 - 4325			Upper fine to medium grained; no particular grade; mudstone rip ups in lower portion; coaly rip up clasts in upper portion; coarse grained in lower portion.
	4325 - 4330			
FERNIE	4330 - 4335	Shelf	FERNIE	
	4335 - 4340			
	4340 - 4345			
	4345 - 4350			
	4350 - 4355			
FERNIE	4355 - 4360	Open Marine	FERNIE	
	4360 - 4365			
	4365 - 4370			
	4370 - 4375			
	4375 - 4380			

GRAIN SIZE

PHYSICAL STRUCTURES

ACCESSORIES

FACIES ASSOCIATION

DEPOSITIONAL ENVIRONMENT

REMARKS

BUICK CREEK

Fluvial/Deltaic

BUICK CREEK

Fluvial/Deltaic

FERNIE

Open Marine

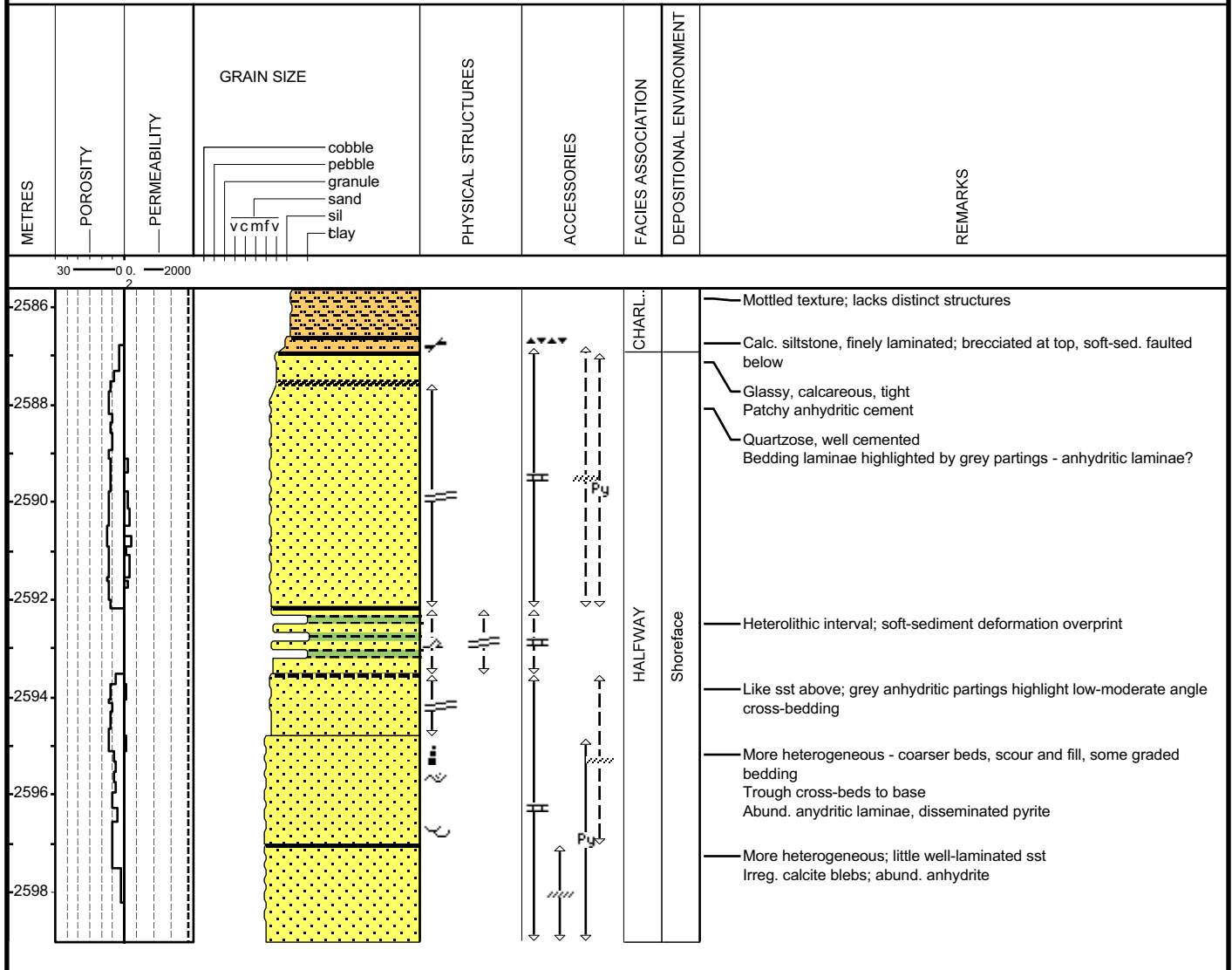
Remarks: HALFWAY FORMATION

Core #1: 2585.6 - 2592.9 (Rec. 7.05 m)

Core #2: 2592.9 - 2599.6 (Rec. 6.1 m)

CORE LOG #15

4" core, slabbed



Scurry Westcoast Ring
c-12-E / 94-I-1

Remarks: JEAN MARIE MEMBER

Core #3: 1514 - 1532 (Rec. 18.0 m)

CORE LOG #17

4" core, slabbed

