
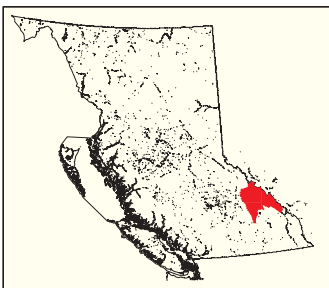
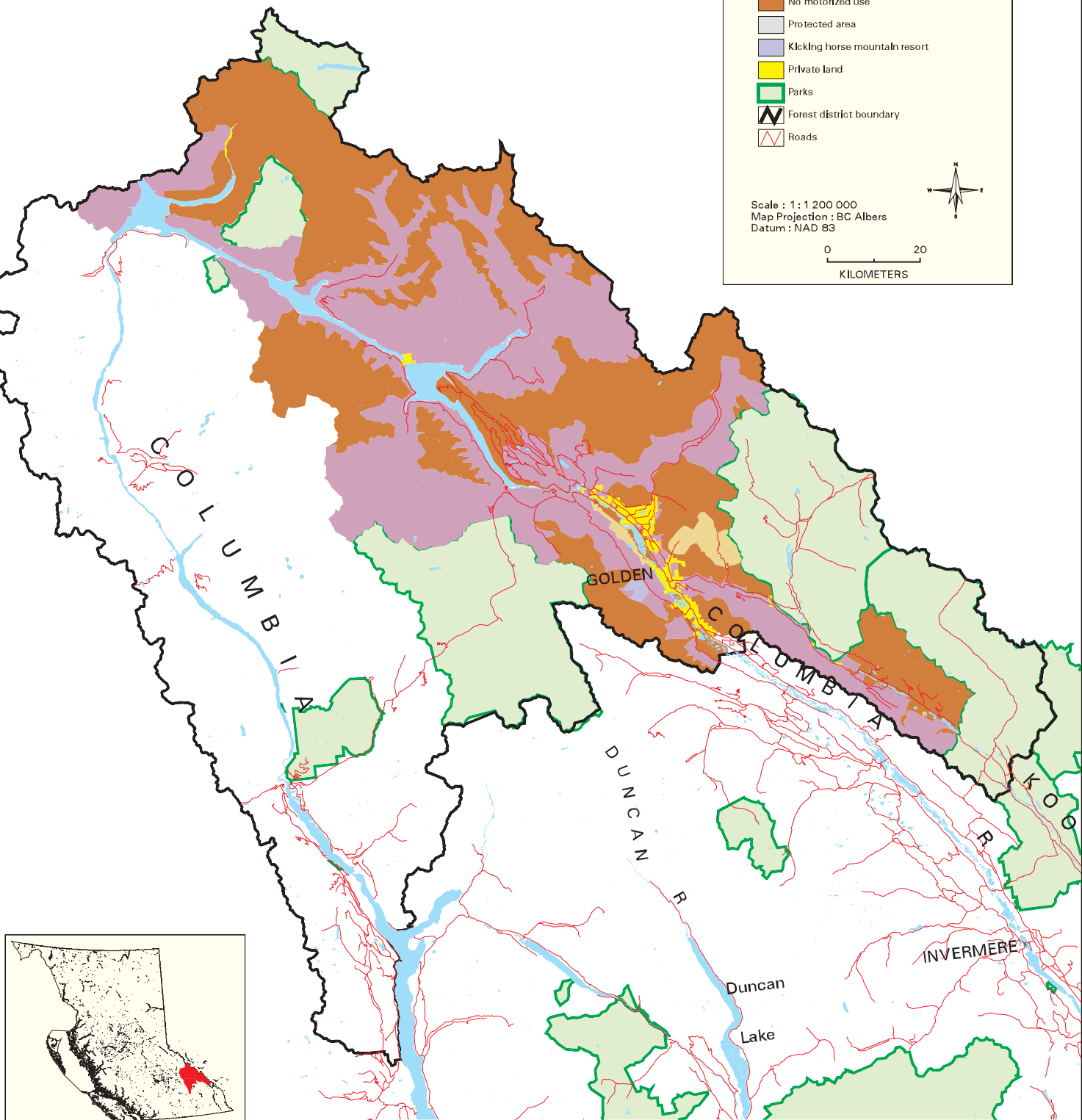
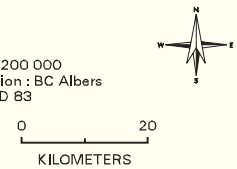


Golden Backcountry Recreation  
Access Plan - Summer Recreation Access

Legend

-  Motorized use allowed
-  Motorized use with partial restriction
-  No motorized use
-  Protected area
-  Kicking horse mountain resort
-  Private land
-  Parks
-  Forest district boundary
-  Roads


Scale : 1 : 1 200 000  
Map Projection : BC Albers  
Datum : NAD 83



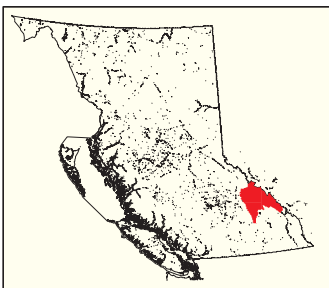
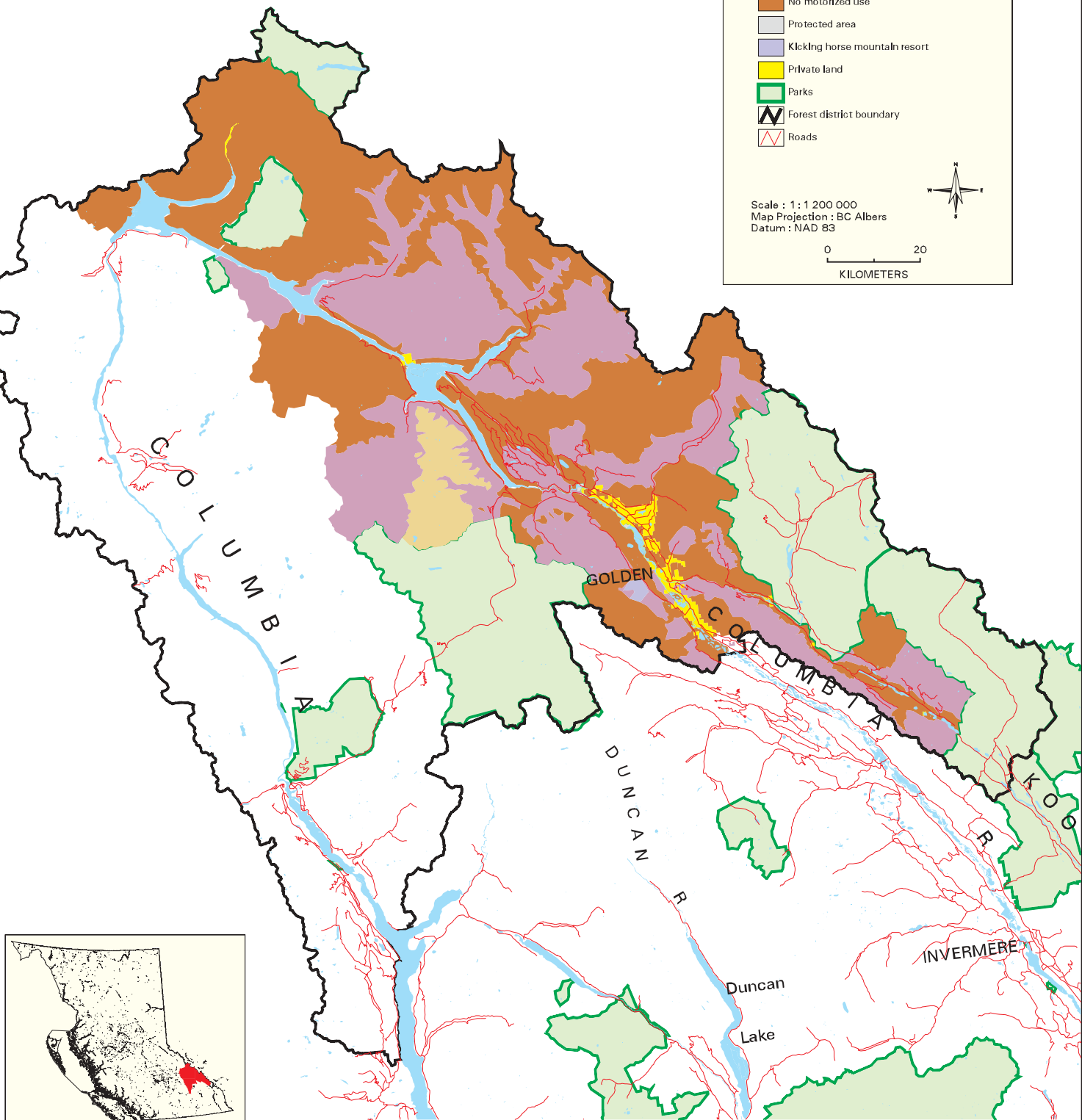
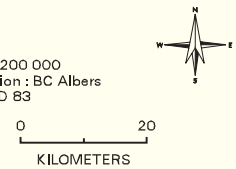
NOTE: For locations of motorized corridors through non-motorized areas and for more specific management direction, see larger scale maps which accompany this plan.

Golden Backcountry Recreation  
Access - Winter Recreation Access

Legend

-  Motorized use allowed
-  Motorized use with partial restriction
-  No motorized use
-  Protected area
-  Kicking horse mountain resort
-  Private land
-  Parks
-  Forest district boundary
-  Roads

Scale : 1 : 1 200 000  
Map Projection : BC Albers  
Datum : NAD 83



NOTE: For locations of motorized corridors through non-motorized areas and for more specific management direction, see larger scale maps which accompany this plan.

Golden Backcountry Recreation  
Access Plan - Aerial Recreation Access

Legend

- Very high - no landing zones recommended
- High - maintain current or prescribed use levels
- Low - no current constraints
- Protected area
- Kicking horse mountain resort
- Private land
- Parks
- Forest district boundary
- Roads

Scale : 1 : 1 200 000  
Map Projection : BC Albers  
Datum : NAD 83



0 20  
KILOMETERS

