

Ministry of Forests, Lands and Natural Resource Operations

Ministerial Order

Land Use Objectives for the Sea-to-Sky Land and Resource Management Plan

Part 1 - Interpretation

1. Relationship with *Forest and Range Practices Act*

- (1) Pursuant to section 93.4 of the *Land Act*, the following objectives are established as land use objectives for the purposes of the *Forest and Range Practices Act*, and apply to the area shown on Map 1.
- (2) This ministerial order establishes land use objectives in accordance with section 93.4 of the *Land Act*, and nothing in, under or arising out of this ministerial order abrogates or derogates from any aboriginal rights, aboriginal title or treaty rights of any applicable First Nation and does not relieve the Province of any obligation to consult with First Nations.

2. Definitions

- (1) In this order:

“cultural heritage resources” means:

- a) trees, wild plant foods, botanical medicines and other forest resources, including wildlife, that are utilized by a First Nation for food, social, treaty or ceremonial purposes; and
- b) culturally modified trees and other historical and archaeological artefacts, sites and locations that are important to the cultural practices, knowledge, spirituality and heritage of a First Nation;

“cultural management areas” means areas identified by First Nations as having historic and contemporary cultural significance to them and for which management direction is provided in the Sea-to-Sky LRMP and government-to-government agreements. The locations of the cultural

management areas referred to in this order are shown on Map 2 and are comprised of:

- the In-SHUCK-ch Nation cultural management area;
- the Lil'wat Nation cultural management areas; and
- the Squamish Nation special cultural management areas;

“cultural places” means places identified by First Nations as having cultural heritage resource values of importance to them and for which management direction is provided in the Sea-to-Sky LRMP and government-to-government agreements. The locations of the cultural places referred to in this order are shown on Map 3 and are comprised of:

- the In-SHUCK-ch Nation cultural sites;
- the Lil'wat Nation A7x7ŭlrñecw (spirited ground) areas and the Skelulátkwa / Owl Creek cultural education area;
- the Squamish Nation Sliyamín ta Skwxwú7mesh (cultural sites) and Úxwumixw (village sites); and
- the Lil'wat Nation “Old Growth and Sensitive Areas”;

“floodplain management areas” means the Crown Land portions of the floodplains of the Upper Lillooet, Green, Soo, Elaho and Squamish Rivers shown on Map 4;

“forested area” means those treed stands identified in the Vegetation Resource Inventory (VRI) with ages greater than age class 2 and with the primary species component as a coniferous tree species, or with the primary species component as a deciduous tree species and the secondary component as a coniferous tree species.

“herbicide” means a substance used to destroy or inhibit the growth of plants;

“mature forest” means stands 80 years or older in the Coastal Western Hemlock (CWH) biogeoclimatic zone and 100 years or older in the Interior Douglas Fir (IDF) biogeoclimatic zone;

“old growth forest” means a stand of trees 250 years or older in the Coastal Western Hemlock and Interior Douglas Fir biogeoclimatic zones;

“pesticide” means a substance used to repel, kill, or control any species considered to be a pest, including weeds, insects, rodents, fungi, bacteria, or other organisms and includes herbicides, insecticides, rodenticides, fungicides, and bactericides;

“riparian areas” means areas of land that have conservation values because of their proximity to water and their ability to support plant and animal species that are distinctly different from the adjacent upland areas.

- (2) Words and expressions not defined in this order have the meaning given to them in the *Forest and Range Practices Act*, the *Forest Act*, the *Heritage Conservation Act*, the *Range Act* and the regulations made there under, unless the context indicates otherwise.
- (3) Where an objective refers to an area shown both on a map and in a spatial dataset linked to the map, the boundaries of the area defined by the spatial dataset are to apply in the event of any inconsistency. The spatial datasets that apply to this order are available for download by going to the Legal Planning Objectives theme on the GeoBC Data Discovery Service at:
<https://apps.gov.bc.ca/pub/geometadata/metadataDetail.do?recordUID=55383&recordSet=ISO191155>
- (4) The descriptive headings used in this order are for convenience only and do not limit or enlarge the meaning of any of the objectives.

Part 2 - First Nations' Cultural Places and Cultural Management Areas

3. Objectives for First Nations' cultural places

- (1) Protect the cultural heritage resources within the cultural places listed in Schedule 1 and shown on Map 3, to support First Nations' food, social, ceremonial and spiritual use of the forest.
- (2) Maintain 100% of the forested area in the following cultural places:
 - a. Zone 2 of the In-SHUCK-ch mountain special management area shown on Map 5;
 - b. Category A Lil'wat Nation A7x7ŭlrñecw (spirited ground) areas shown on Map 6;
 - c. Portions of Category B Lil'wat Nation A7x7ŭlrñecw (spirited ground) areas within floodplain management areas as shown on Map 7;
 - d. Squamish Nation Síiyamín ta Skwxwú7mesh (cultural sites) shown on Map 8;
 - e. Core areas within Squamish Nation Úxwumixw (village sites) shown on Map 8; and
 - f. Lil'wat Nation Q'em'sám (Old Growth and Sensitive Area) shown on Map 12.

- (3) Despite subsection 3 (2), timber harvesting may occur in the cultural places described in subsection 3 (2) to:
 - a. maintain forest health within the cultural places and adjacent forests;
 - b. address road maintenance activities within the cultural places; and to
 - c. eliminate a safety hazard.

4. Objectives for First Nations' cultural management areas

- (1) Conserve cultural heritage resources within the Lower Lillooet, Upper Soo, Qwalímak / Birkenhead River, Cheakamus, Callaghan, Kákila, Upper Elaho, Nexw Áyantsut / Sims Creek and the Estétiwilh / Westside Squamish River cultural management areas shown on Map 2.
- (2) Maintain opportunities for First Nations to practice traditional harvesting for food, social, ceremonial and spiritual purposes in the cultural management areas.
- (3) Maintain 100% of the old growth forest in the Upper Elaho cultural management area shown on Map 2.
- (4) Protect riparian area and cultural heritage resource values in the Qwalímak / Birkenhead River corridor area shown on Map 9 by:
 - a. limiting forest harvesting to stands that were less than 40 years of age as of March 2008; and by
 - b. using alternatives to pesticide and herbicide applications in this area, where practicable.
- (5) Despite subsection 4 (4) a., timber harvesting may occur in the Qwalímak / Birkenhead River corridor described in section 4 (4) to:
 - a. maintain forest health within the corridor and adjacent forests;
 - b. address road maintenance activities within the corridor; and to
 - c. eliminate a safety hazard.

Part 3 - Floodplains and Riparian Areas

5. Objectives for floodplain management areas

- (1) Maintain the functional integrity of the floodplain ecosystems within each of the five floodplain management areas shown on Map 4 by:
 - a. limiting the total area available for timber harvesting to a maximum of 20% of each floodplain management area over a rotation; and

- b. retaining a fully representative suite of forest types, plant communities and wildlife habitats within each floodplain management area, where practicable.
- (2) Maintain 100% of the forested area in the portion of the Squamish River floodplain management area that is situated on the west side of the Squamish River as shown on Map 10.
- (3) Despite subsection 5 (2), timber harvesting may occur in the portion of the Squamish River floodplain management area situated on the west side of the Squamish River as described in section 5 (2) to:
 - a. maintain forest health in the area and adjacent forests;
 - b. address road maintenance activities within the area; and to
 - c. eliminate a safety hazard.

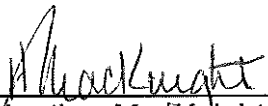
6. Objectives for riparian areas

- (1) Maintain at least 70% of the forested area, as a combination of mature forest and old growth forest, within the Upper Lillooet River riparian area shown on Map 11.
- (2) Maintain at least 70% of the forested area, as a combination of mature forest and old growth forest, within a minimum 100 meter riparian buffer area around Lillooet Lake.
- (3) Protect riparian area values within the 100 meter riparian buffer area around Lillooet Lake by using alternatives to pesticide and herbicide applications in this area, where practicable.

Part 4 - Transition

7. Application of this order

- (1) This order and the land use objectives in this order take effect on the date that notice of this order is published in the Gazette.
- (2) The applicable period under section 8(2)(b) of the *Forest and Range Practices Act* is 12 months starting on the date this order comes into effect as specified in subsection 7(1).



Heather MacKnight

Regional Executive Director, South Coast Region
Regional Operations
Ministry of Forests, Lands and Natural Resource Operations

August 13, 2013
Date

Ministerial Order
Land Use Objectives for the Sea-to-Sky Land and Resource Management Plan

Schedule 1. List of First Nation Cultural Places Applicable to the Order

<u>No.</u>	<u>First Nation</u>	<u>Cultural Place Name</u>
1	In-SHUCK-ch Nation	Cúmivqs / Franks Creek cultural site
2	In-SHUCK-ch Nation	In-SHUCK-ch Mountain special management area
3	Lil'wat Nation	Skelulátkwa / Owl Creek cultural education area
4	Lil'wat Nation	27 Mile A7x7úlñecw (spirited ground) area -Cat. "A"
5	Lil'wat Nation	29 Mile A7x7úlñecw (spirited ground) area -Cat. "A"
6	Lil'wat Nation	6 Mile Creek A7x7úlñecw (spirited ground) area -Cat. "A"
7	Lil'wat Nation	Cheakamus Canyon A7x7úlñecw (spirited ground) area -Cat. "A"
8	Lil'wat Nation	Grandfather Mountain A7x7úlñecw (spirited ground) area -Cat. "A"
9	Lil'wat Nation	Hindu Flats A7x7úlñecw (spirited ground) area -Cat. "A"
10	Lil'wat Nation	IR4 A7x7úlñecw (spirited ground) area -Cat. "A"
11	Lil'wat Nation	Lizzie Lake A7x7úlñecw (spirited ground) area -Cat. "A"
12	Lil'wat Nation	Lokla A7x7úlñecw (spirited ground) area -Cat. "A"
13	Lil'wat Nation	Lower Birkenhead A7x7úlñecw (spirited ground) area -Cat. "A"
14	Lil'wat Nation	Lower Soo A7x7úlñecw (spirited ground) area -Cat. "A"
15	Lil'wat Nation	MacKenzie Basin A7x7úlñecw (spirited ground) area -Cat. "A"
16	Lil'wat Nation	Mosquito Lake A7x7úlñecw (spirited ground) area -Cat. "A"
17	Lil'wat Nation	North Creek A7x7úlñecw (spirited ground) area -Cat. "A"
18	Lil'wat Nation	North Millar A7x7úlñecw (spirited ground) area -Cat. "A"
19	Lil'wat Nation	Owl Creek Pool A7x7úlñecw (spirited ground) area -Cat. "A"
20	Lil'wat Nation	Oxbow Lake A7x7úlñecw (spirited ground) area -Cat. "A"
21	Lil'wat Nation	Shadow Lake A7x7úlñecw (spirited ground) area -Cat. "A"
22	Lil'wat Nation	Smoke-a-butt trail A7x7úlñecw (spirited ground) area -Cat. "A"
23	Lil'wat Nation	Soo Waterfall A7x7úlñecw (spirited ground) area -Cat. "A"
24	Lil'wat Nation	Spetch Creek A7x7úlñecw (spirited ground) area -Cat. "A"
25	Lil'wat Nation	Upper Birkenhead A7x7úlñecw (spirited ground) area -Cat. "A"
26	Lil'wat Nation	Wolverine Lake A7x7úlñecw (spirited ground) area -Cat. "A"
27	Lil'wat Nation	Birkenhead Bailey Bridge A7x7úlñecw (spirited ground) area -Cat. "B"
28	Lil'wat Nation	Driftwood A7x7úlñecw (spirited ground) area -Cat. "B"
29	Lil'wat Nation	Gates Falls A7x7úlñecw (spirited ground) area -Cat. "B"
30	Lil'wat Nation	Gravelle Creek A7x7úlñecw (spirited ground) area -Cat. "B"
31	Lil'wat Nation	Green Lake A7x7úlñecw (spirited ground) area -Cat. "B"
32	Lil'wat Nation	Green-Lillooet River A7x7úlñecw (spirited ground) area -Cat. "B"
33	Lil'wat Nation	Hi7hi A7x7úlñecw (spirited ground) area -Cat. "B"
34	Lil'wat Nation	Ivey Lake West A7x7úlñecw (spirited ground) area -Cat. "B"
35	Lil'wat Nation	Lillooet Lake-Fish Camp A7x7úlñecw (spirited ground) area -Cat. "B"
36	Lil'wat Nation	Lillooet Lake North A7x7úlñecw (spirited ground) area -Cat. "B"
37	Lil'wat Nation	Lillooet Lake South A7x7úlñecw (spirited ground) area (1 & 2) -Cat. "B"
38	Lil'wat Nation	Lower Twin One A7x7úlñecw (spirited ground) area -Cat. "B"
39	Lil'wat Nation	Meager A7x7úlñecw (spirited ground) area -Cat. "B"
40	Lil'wat Nation	Owl Creek A7x7úlñecw (spirited ground) area -Cat. "B"
41	Lil'wat Nation	Pemberton Airport A7x7úlñecw (spirited ground) area -Cat. "B"
42	Lil'wat Nation	Salal Creek-Keyhole Falls A7x7úlñecw (spirited ground) area -Cat. "B"
43	Lil'wat Nation	Sampson Creek A7x7úlñecw (spirited ground) area -Cat. "B"

Ministerial Order
Land Use Objectives for the Sea-to-Sky Land and Resource Management Plan

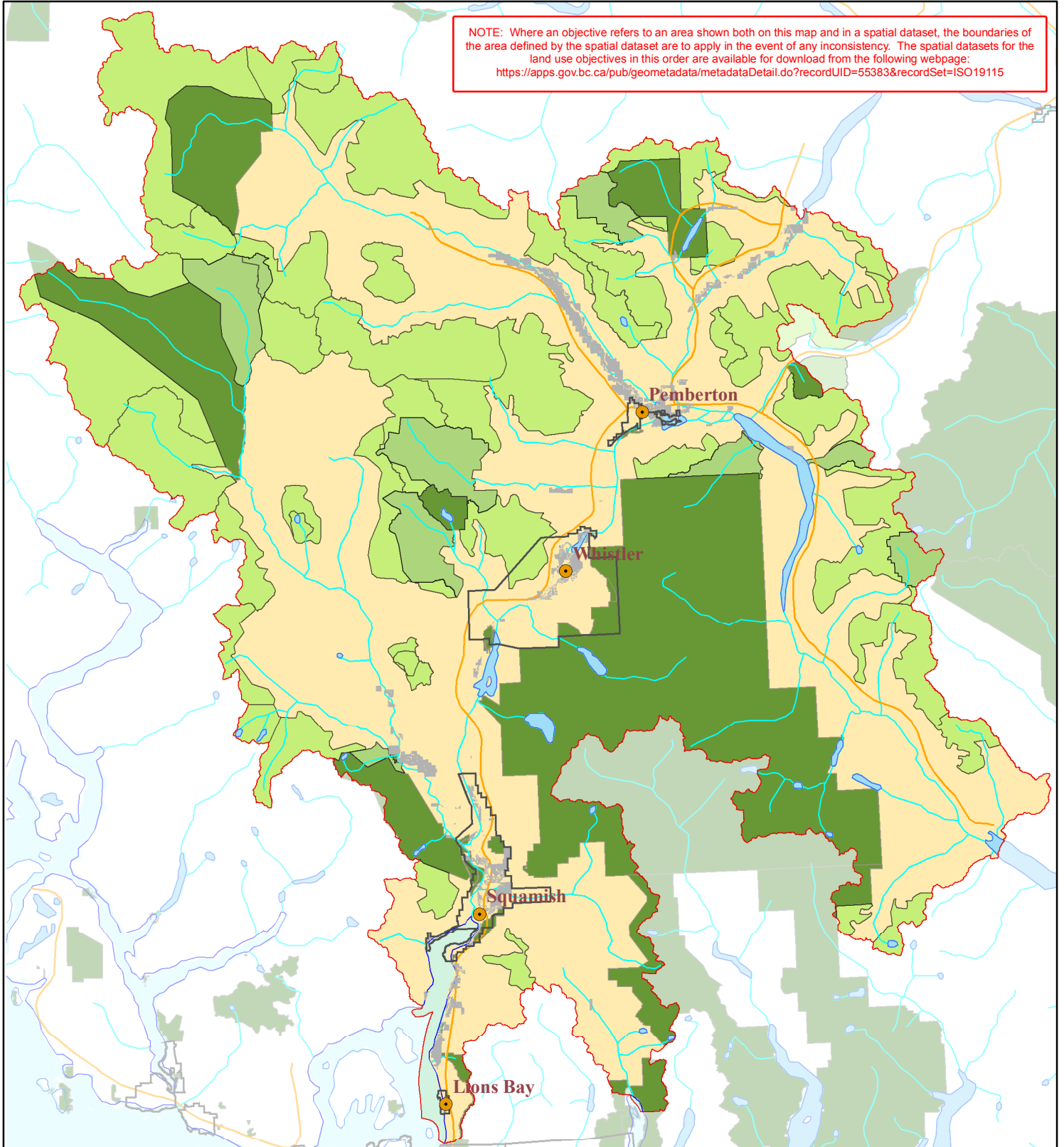
44	Lil'wat Nation	Signal Hill A7x7úlñecw (spirited ground) area -Cat. "B"
45	Lil'wat Nation	Tenas Lake A7x7úlñecw (spirited ground) area -Cat. "B"
46	Lil'wat Nation	Ts'zil A7x7úlñecw (spirited ground) area -Cat. "B"
47	Lil'wat Nation	Walkers Bridge A7x7úlñecw (spirited ground) area -Cat. "B"
48	Squamish Nation	Browning Lake Síiyamín ta Skwxwú7mesh (cultural) site
49	Squamish Nation	ChekChekts Úxwumixw (village) site
50	Squamish Nation	Cloudburst Mountain Síiyamín ta Skwxwú7mesh (cultural) site
51	Squamish Nation	Fries Creek Síiyamín ta Skwxwú7mesh (cultural) site
52	Squamish Nation	Green Lake North Síiyamín ta Skwxwú7mesh (cultural) site
53	Squamish Nation	Indian River Síiyamín ta Skwxwú7mesh (cultural) site
54	Squamish Nation	Lower High Falls Creek Síiyamín ta Skwxwú7mesh (cultural) site
55	Squamish Nation	Lower Soo River Síiyamín ta Skwxwú7mesh (cultural) site
56	Squamish Nation	Mid Cheakamus River Síiyamín ta Skwxwú7mesh (cultural) site
57	Squamish Nation	Monmouth Creek Síiyamín ta Skwxwú7mesh (cultural) site
58	Squamish Nation	Puyam Úxwumixw (village) site
59	Squamish Nation	Raffuse Creek Síiyamín ta Skwxwú7mesh (cultural) site
60	Squamish Nation	Sims Elaho Confluence Síiyamín ta Skwxwú7mesh (cultural) site
61	Squamish Nation	Squamish River West Síiyamín ta Skwxwú7mesh (cultural) site
62	Squamish Nation	Stawamus Creek Síiyamín ta Skwxwú7mesh (cultural) site
63	Squamish Nation	Tatlow Creek Síiyamín ta Skwxwú7mesh (cultural) site
64	Squamish Nation	Upper Cheakamus River Síiyamín ta Skwxwú7mesh (cultural) site
65	Squamish Nation	Upper High Falls Creek Síiyamín ta Skwxwú7mesh (cultural) site
66	Squamish Nation	Upper Mamquam Síiyamín ta Skwxwú7mesh (cultural) site
67	Squamish Nation	Yelhixw Úxwumixw (village) site

AN

SEA-TO-SKY MINISTERIAL ORDER

MAP 1: Area to Which Order Applies

NOTE: Where an objective refers to an area shown both on this map and in a spatial dataset, the boundaries of the area defined by the spatial dataset are to apply in the event of any inconsistency. The spatial datasets for the land use objectives in this order are available for download from the following webpage:
<https://apps.gov.bc.ca/pub/geometadata/metadataDetail.do?recordUID=55383&recordSet=ISO19115>



Legend

- Sea to Sky LRMP Boundary
- Area to which Order applies
- Wildlands
- Conservancies
- Provincial Parks
- Private Land



0 5 10 20 30 Km

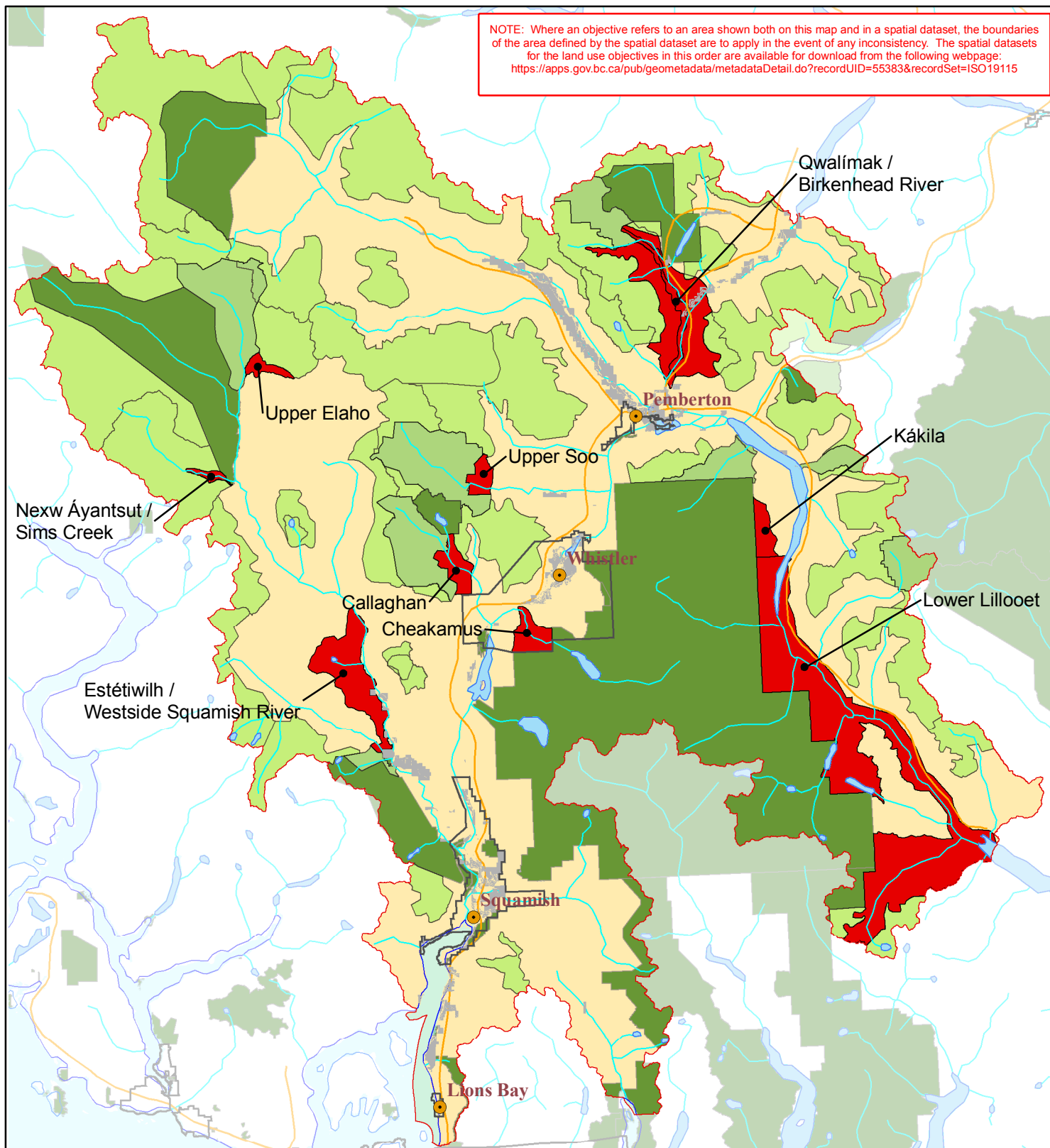
Scale: 1:750,000



SEA-TO-SKY MINISTERIAL ORDER

MAP 2: First Nations' Cultural Management Areas

NOTE: Where an objective refers to an area shown both on this map and in a spatial dataset, the boundaries of the area defined by the spatial dataset are to apply in the event of any inconsistency. The spatial datasets for the land use objectives in this order are available for download from the following webpage: <https://apps.gov.bc.ca/pub/geometadata/metadataDetail.do?recordUID=55383&recordSet=ISO19115>



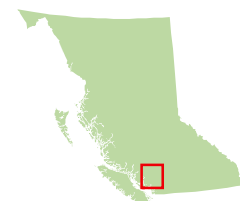
Legend

- Sea to Sky LRMP Boundary
- First Nations' Cultural Management Areas
- Wildlands
- Conservancies
- Provincial Parks
- Private Land



0 4.5 9 18 27 Km

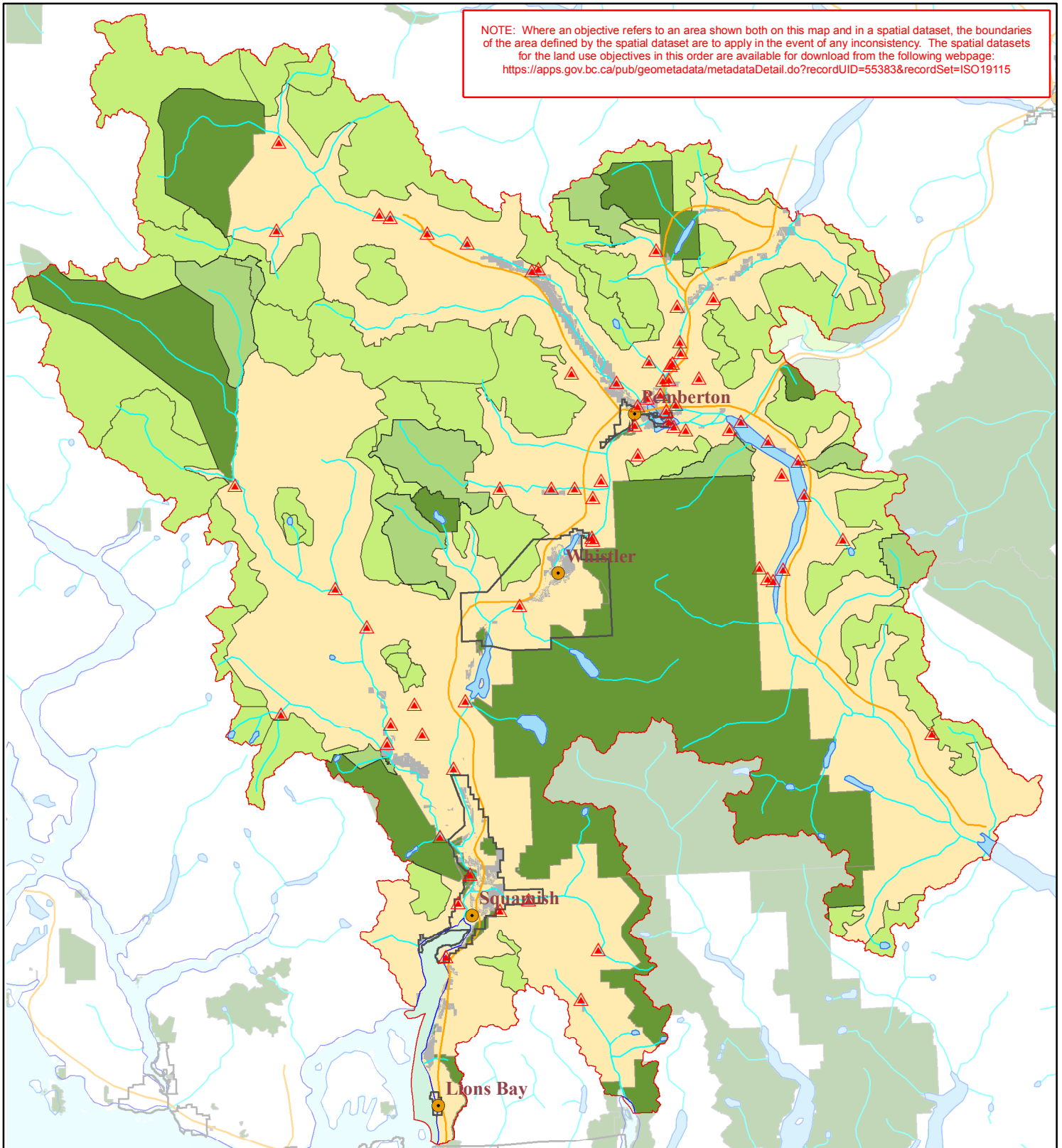
Scale: 1:750,000



SEA-TO-SKY MINISTERIAL ORDER

MAP 3: First Nations' Cultural Places

NOTE: Where an objective refers to an area shown both on this map and in a spatial dataset, the boundaries of the area defined by the spatial dataset are to apply in the event of any inconsistency. The spatial datasets for the land use objectives in this order are available for download from the following webpage:
<https://apps.gov.bc.ca/pub/geometadata/metadataDetail.do?recordUID=55383&recordSet=ISO19115>



Legend

- ▲ First Nations' Cultural Places
- Sea to Sky LRMP Boundary
- Private Land
- Wildlands
- Conservancies
- Provincial Parks

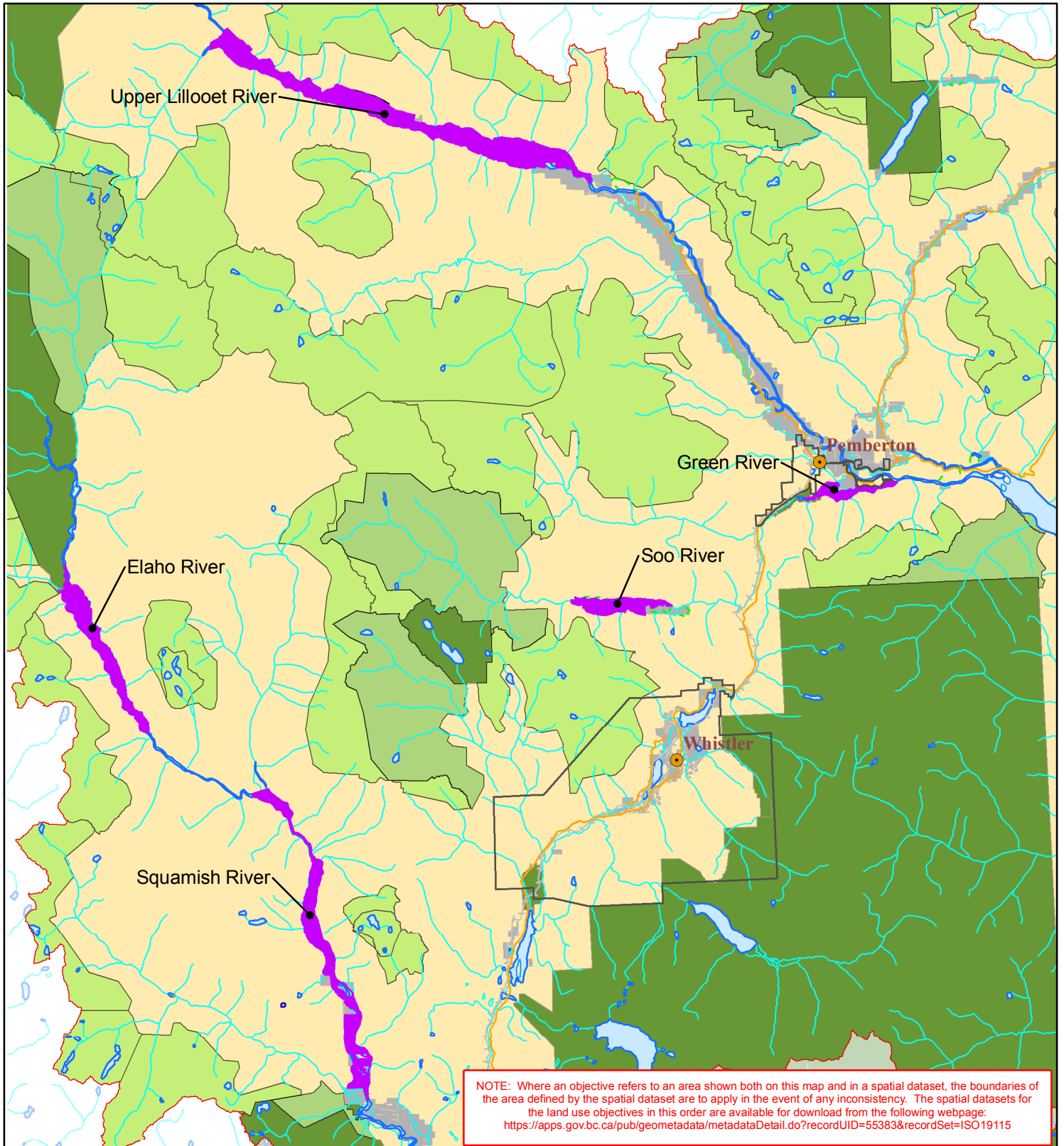


0 3 6 12 18 Km

Scale: 1:750,000



SEA-TO-SKY MINISTERIAL ORDER
MAP 4: Floodplain Management Areas



Legend

- Sea to Sky LRMP Boundary
- Floodplain Management Areas
- Wildlands
- Conservancies
- Provincial Parks
- Private Land



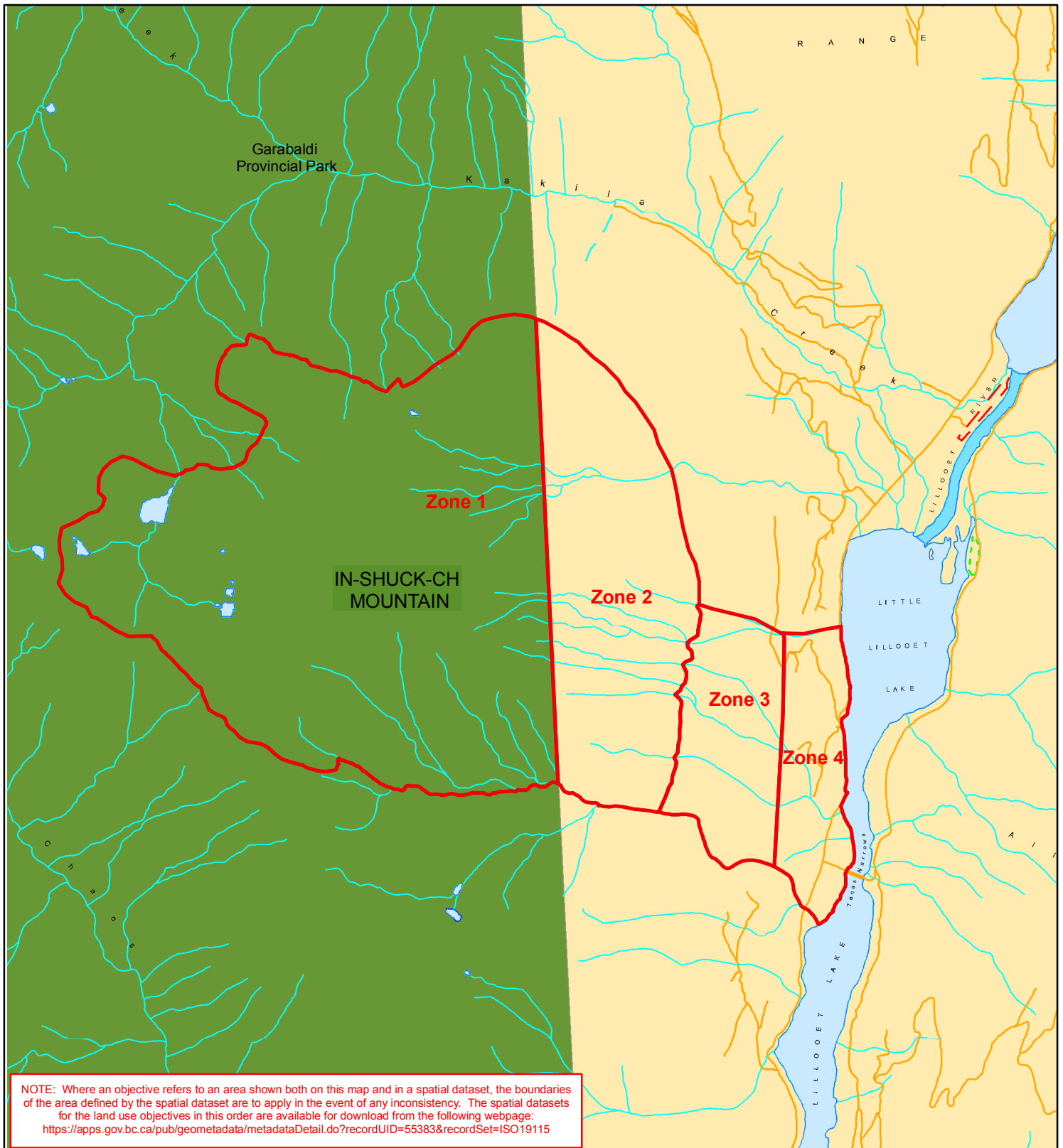
0 2.5 5 10 15 Km

Scale: 1:400,000



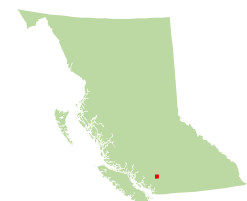
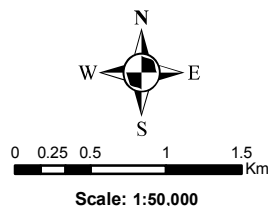
SEA-TO-SKY MINISTERIAL ORDER

MAP 5: In-SHUCK-ch Mountain Special Management Area

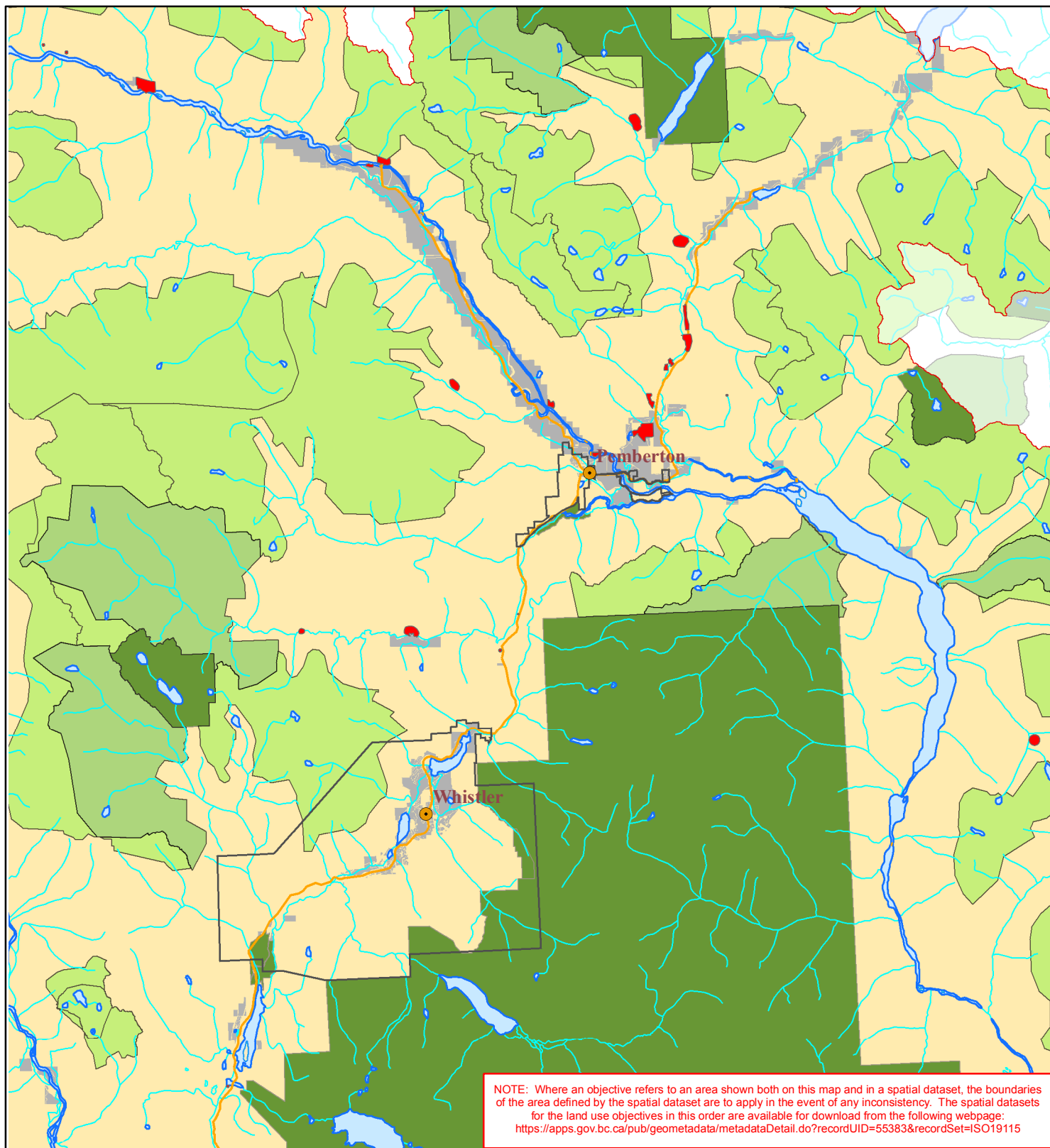


Legend

- In-SHUCK-ch Mountain Special Management Area
- Provincial Park



SEA-TO-SKY MINISTERIAL ORDER
 MAP 6: Category A Lil'wat Nation A7x7úlmechw (Spirited Ground) Areas



Legend

- Category A Lil'wat Nation A7x7úlmechw (spirited ground) areas
- Sea to Sky LRMP Boundary
- Wildlands
- Conservancies
- Provincial Parks



0 3 6 12 18 Km

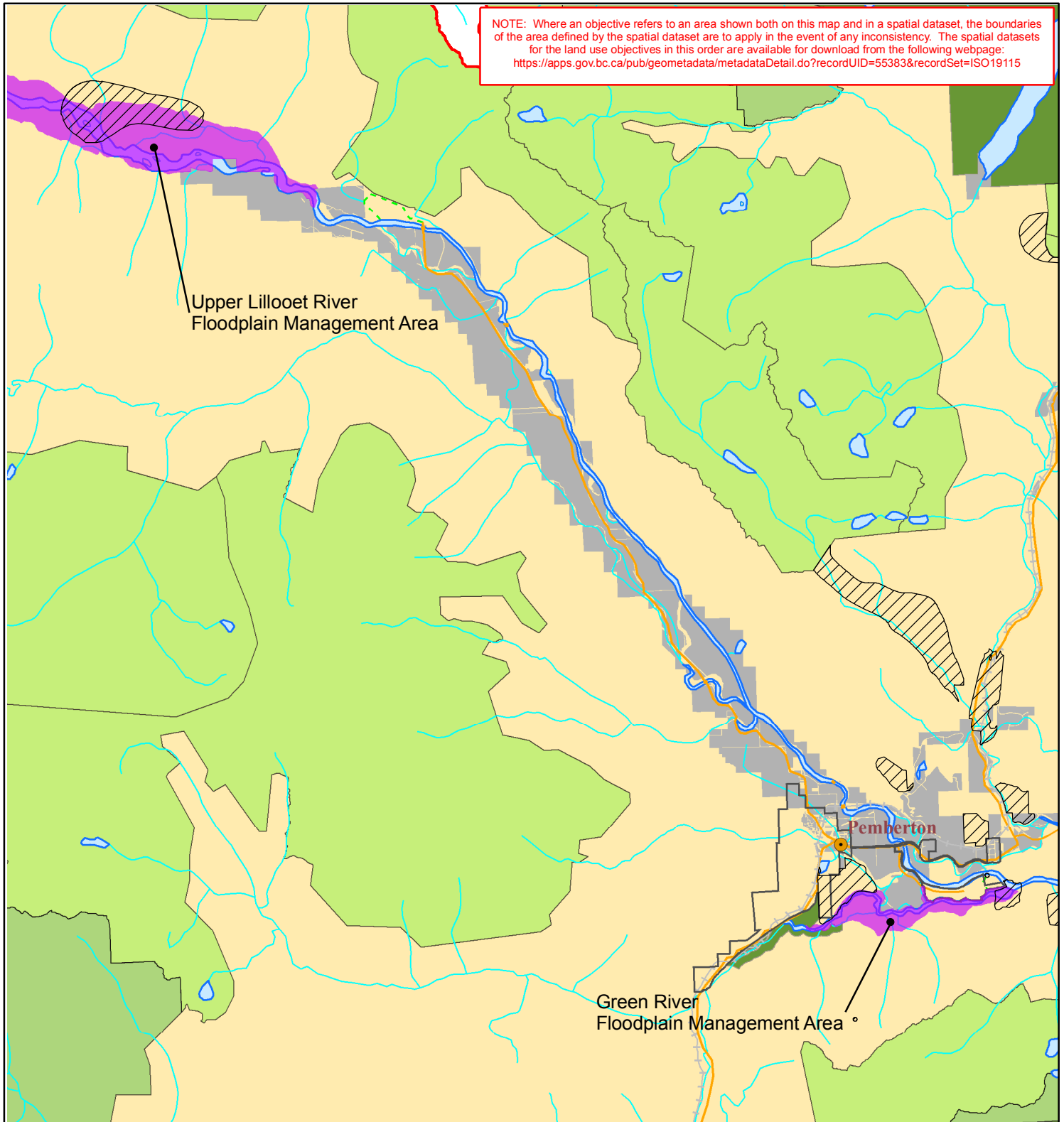
Scale: 1:350,000



SEA-TO-SKY MINISTERIAL ORDER

MAP 7: Portions of Category B Lil'wat Nation A7x7úlmechw (Spirited Ground) Areas within Floodplain Management Areas

NOTE: Where an objective refers to an area shown both on this map and in a spatial dataset, the boundaries of the area defined by the spatial dataset are to apply in the event of any inconsistency. The spatial datasets for the land use objectives in this order are available for download from the following webpage:
<https://apps.gov.bc.ca/pub/geometadata/metadataDetail.do?recordUID=55383&recordSet=ISO19115>



Legend

- Sea-to-Sky LRMP Boundary
- Floodplain Management Areas
- Category B Lil'wat Nation A7x7úlmechw (spirited ground) areas
- Wildlands
- Conservancies
- Provincial Parks



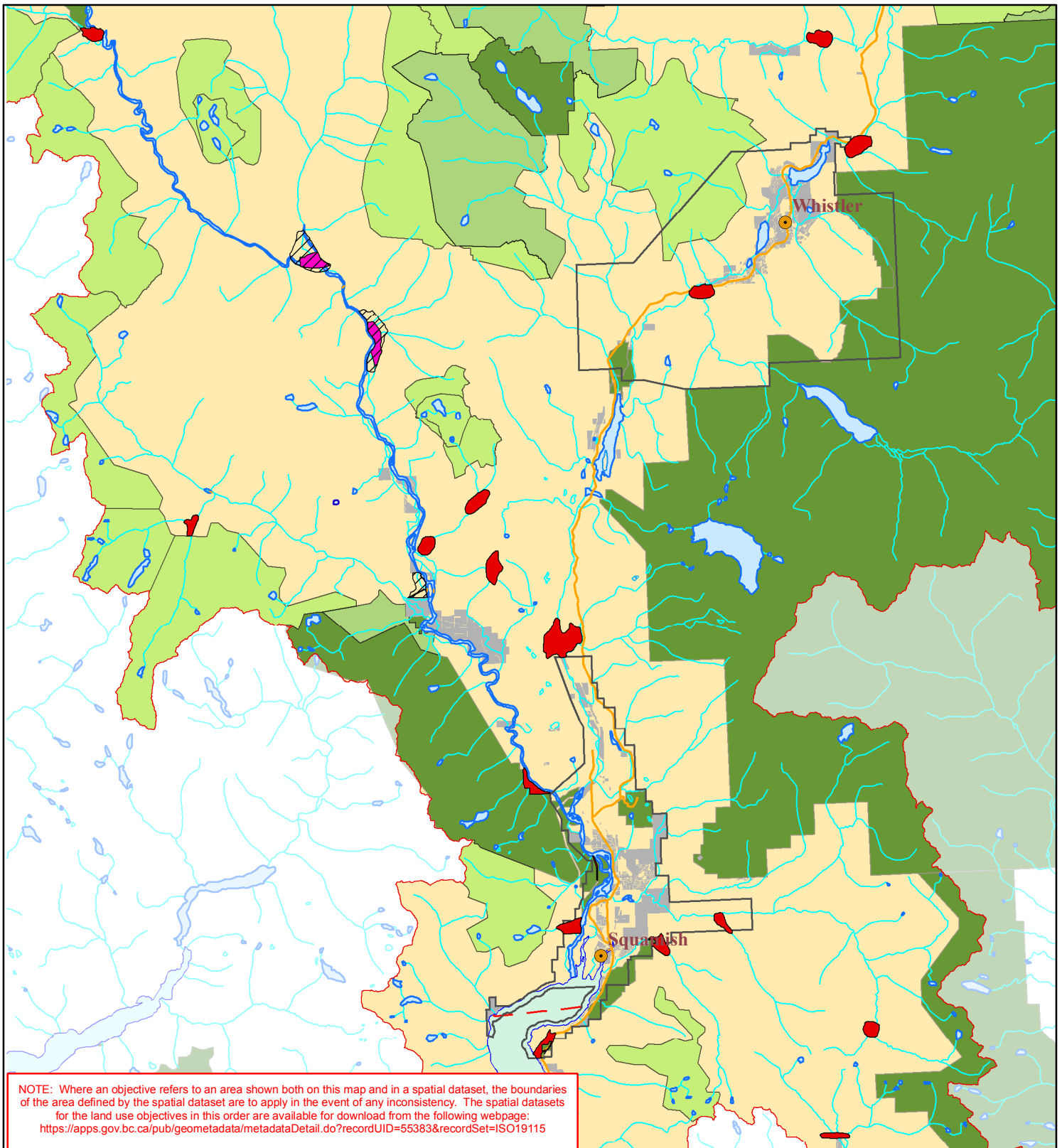
0 1 2 4 6 Km

Scale: 1:175,000



SEA-TO-SKY MINISTERIAL ORDER

MAP 8: Squamish Nation Siyamín ta Skwxwú7mesh (cultural sites) and Core Areas within Úxwumixw (village sites)



Legend

- Squamish Nation Úxwumixw (village sites)
- Core Areas within Squamish Nation Úxwumixw (village sites)
- Squamish Nation Siyamín ta Skwxwú7mesh (cultural sites)
- Wildlands
- Conservancies
- Provincial Parks
- Private Land



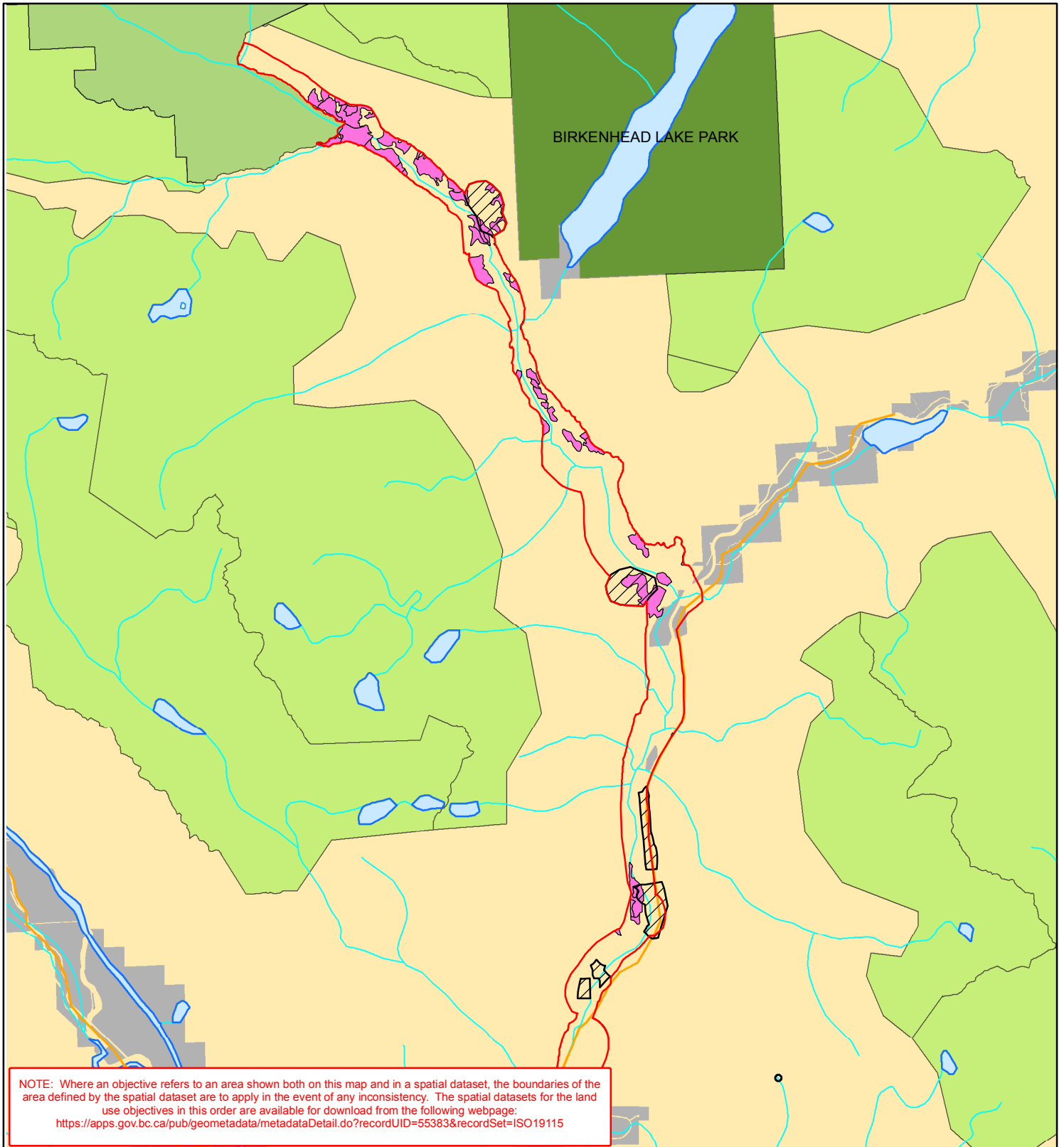
0 2.5 5 10 15 Km

Scale: 1:350,000



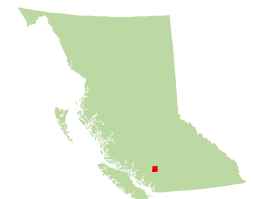
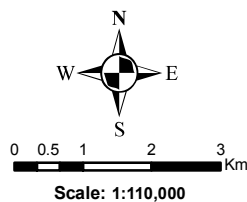
SEA-TO-SKY MINISTERIAL ORDER

MAP 9: Qwalímak / Birkenhead River Corridor



Legend

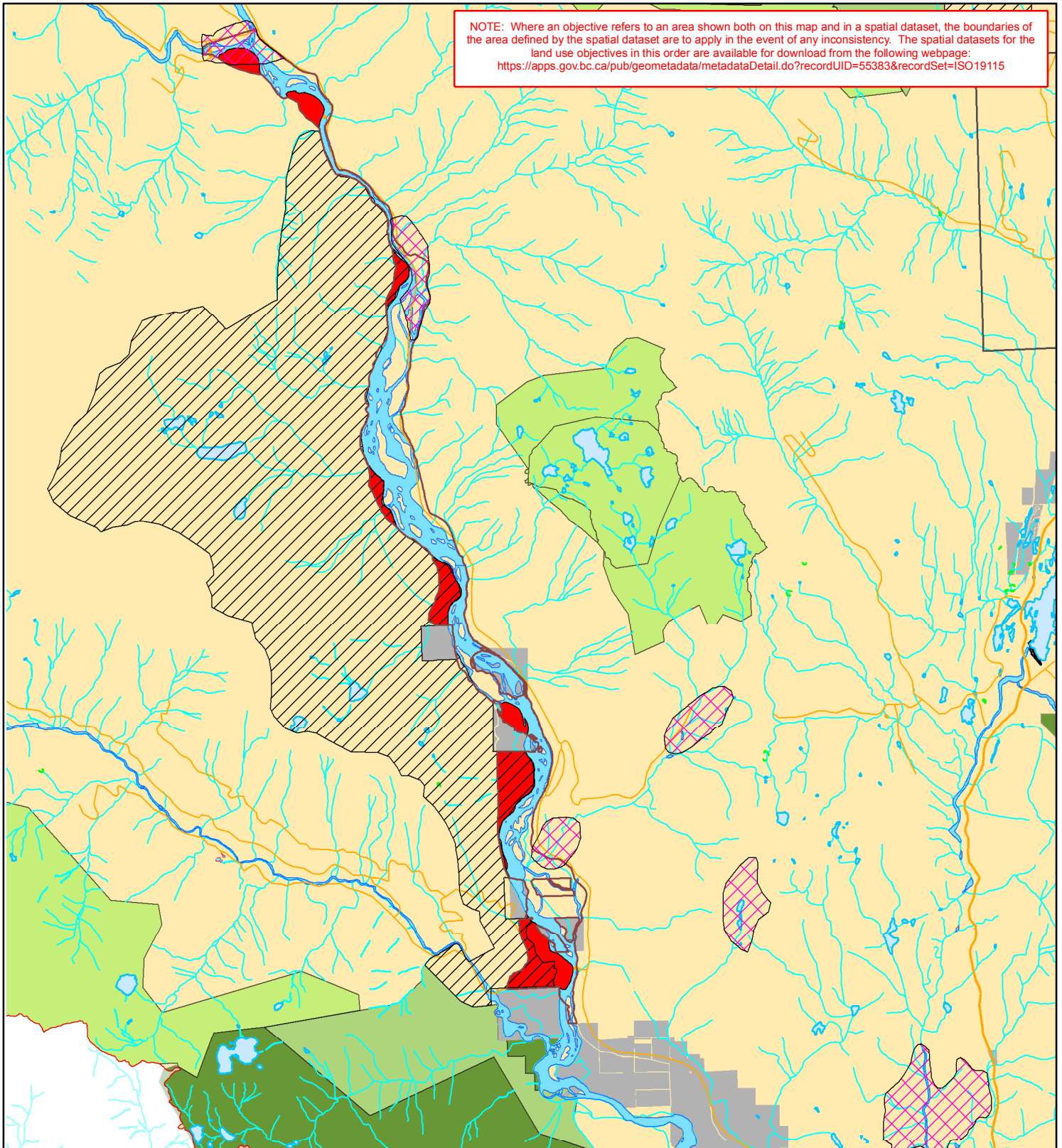
- Qwalimak / Birkenhead River Corridor
- Category A Lil'wat Nation A7x7úlmechw (spirited ground) areas
- Stands <40 yrs old as of March 2008
- Wildlands
- Conservancies
- Provincial Parks
- Private Land



SEA-TO-SKY MINISTERIAL ORDER

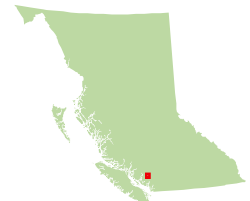
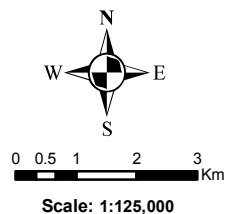
MAP 10: West Side of Squamish River Floodplain Management Area

NOTE: Where an objective refers to an area shown both on this map and in a spatial dataset, the boundaries of the area defined by the spatial dataset are to apply in the event of any inconsistency. The spatial datasets for the land use objectives in this order are available for download from the following webpage:
<https://apps.gov.bc.ca/pub/geometadata/metadataDetail.do?recordUID=55383&recordSet=ISO19115>



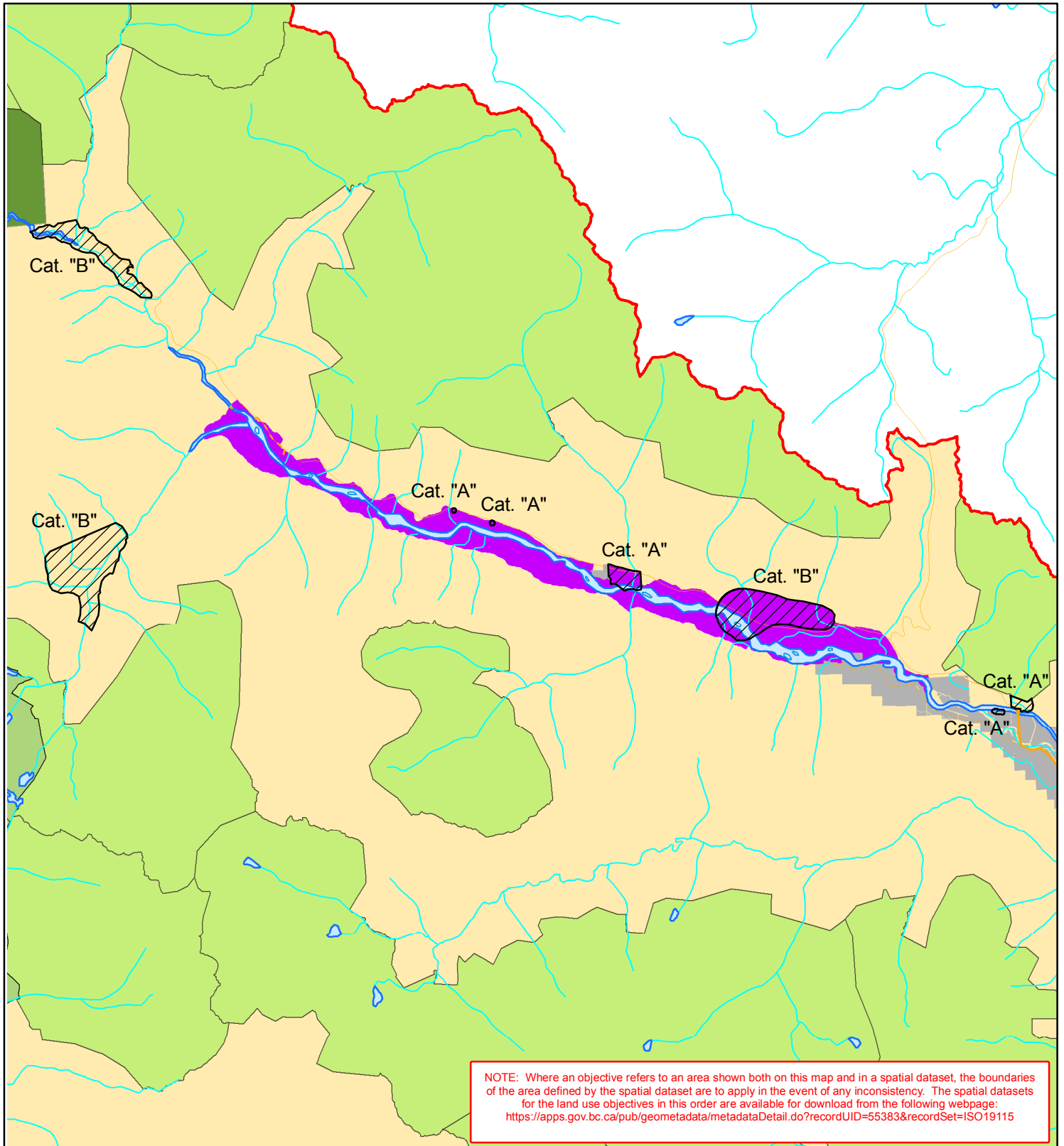
Legend

- Squamish Cultural Sites
- Squamish River Floodplain Management Area
- Estetiwiw/Westside Squamish River Cultural Management Area
- West Side of Squamish River Floodplain Management Area
- Wildlands
- Conservancies
- Provincial Parks
- Private Land



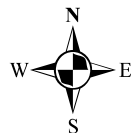
SEA-TO-SKY MINISTERIAL ORDER

MAP 11: Upper Lillooet River Riparian Area



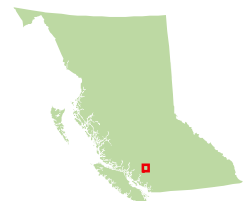
Legend

- Lil'wat Nation A7x7ülmechw (spirited ground) areas
- Sea-to-Sky LRMP Boundary
- Upper Lillooet River Riparian Area
- Wildlands
- Conservancies
- Provincial Parks
- Private Land

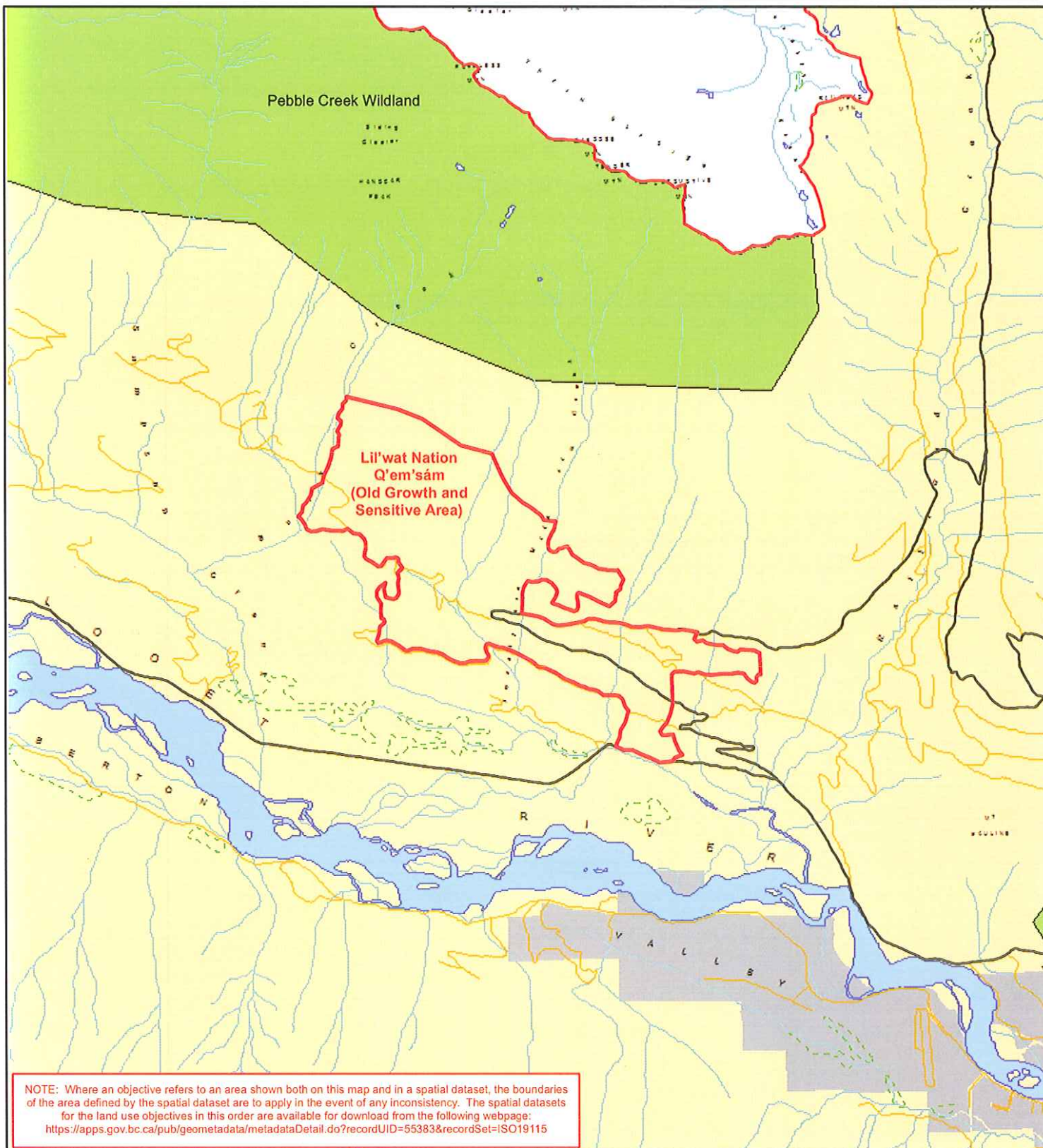


0 1.5 3 6 9 Km

Scale: 1:210,000

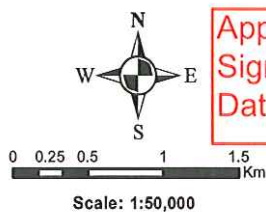


SEA-TO-SKY MINISTERIAL ORDER
MAP 12: Lil'wat Nation Q'em'sám (Old Growth and Sensitive Area)



Legend

- Lil'wat Nation Q'em'sám (Old Growth and Sensitive Area)
- S2S LRMP Boundary
- Private Land
- Wildlands
- Provincial Park



Approved
Signature: *Mark Knight*
Date: *August 13, 2013*

