

# Data Definitions and Standards

## Element Definitions

**Student/Program Subject Area  
Version 2010**

**Updated May 2024**

Ministry of Post-Secondary Education and Future Skills

# Table of Contents

<b>DOCUMENT REVISION SUMMARY .....</b>	<b>1</b>
<b>SUMMARY OF CHANGES IN VERSION 2010 .....</b>	<b>2</b>
<b>SUMMARY OF CHANGES IN VERSION 2004 .....</b>	<b>3</b>
<b>SUMMARY OF CHANGES IN VERSION 2002 .....</b>	<b>5</b>
<b>SUMMARY OF CHANGES IN VERSION 2000 .....</b>	<b>6</b>
CAMPUS (CAM).....	11
COURSE (CRS) - <i>TABLE 1 OF 3</i> .....	12
COURSE (CRS) - <i>TABLE 2 OF 3</i> .....	13
COURSE (CRS) - <i>TABLE 3 OF 3</i> .....	14
COURSE_SECTION (CSEC) - <i>TABLE 1 OF 3</i> .....	15
COURSE_SECTION (CSEC) - <i>TABLE 2 OF 3</i> .....	16
COURSE_SECTION (CSEC) - <i>TABLE 3 OF 3</i> .....	17
COURSE_SECTION_DELIVERY_MODE (CSDM).....	18
COURSE_SECTION_FUNDING_SOURCE (CSFS).....	19
PROGRAM (PRO) - <i>TABLE 1 OF 3</i> .....	20
PROGRAM (PRO) - <i>TABLE 2 OF 3</i> .....	21
PROGRAM (PRO) - <i>TABLE 3 OF 3</i> .....	22
SESSION (SES) .....	24
STUDENT (STU) - <i>TABLE 1 OF 2</i> .....	25
STUDENT (STU) - <i>TABLE 2 OF 2</i> .....	27
STUDENT_COURSE_ACHIEVEMENT (SCA) - <i>TABLE 1 OF 4</i> .....	28
STUDENT_COURSE_ACHIEVEMENT (SCA) - <i>TABLE 2 OF 4</i> .....	29
STUDENT_COURSE_ACHIEVEMENT (SCA) - <i>TABLE 3 OF 4</i> .....	30
STUDENT_COURSE_ACHIEVEMENT (SCA) - <i>TABLE 4 OF 4</i> .....	31
STUDENT_COURSE_REGISTRATION (SCR) - <i>TABLE 1 OF 3</i> .....	32
STUDENT_COURSE_REGISTRATION (SCR) - <i>TABLE 2 OF 3</i> .....	33
STUDENT_COURSE_REGISTRATION (SCR) - <i>TABLE 3 OF 3</i> .....	34
STUDENT_COURSE_TRANSFER (SCT).....	36
STUDENT_CREDENTIAL (SC) .....	37
STUDENT_SESSION_REGISTRATION (SSR) - <i>TABLE 1 OF 4</i> .....	39
STUDENT_SESSION_REGISTRATION (SSR) - <i>TABLE 2 OF 4</i> .....	40
STUDENT_SESSION_REGISTRATION (SSR) - <i>TABLE 3 OF 4</i> .....	41

STUDENT_SESSION_REGISTRATION (SSR) - <i>TABLE 4 OF 4</i> .....	42
<b>COMMON TABLE DEFINITIONS.....</b>	<b>43</b>
CIP (CIP).....	44
CITIZENSHIP (CITZ) .....	45
CREDENTIAL_TYPE (CTYP) .....	46
DELIVERY_MODE (DMOD) .....	47
DISCIPLINE (DIS) .....	48
FEE_SOURCE (FEES) .....	49
FUNDING_SOURCE (FUNS) .....	50
HIGH_SCHOOLS (HS) .....	51
INSTITUTION (INS).....	52
PROGRAM_ENTRANCE_REQUIREMENT (PER).....	53
SCHOOL_DISTRICT (SD) .....	54
STUDENT_COURSE_FEE_TYPE (SCFT).....	55
TRANSFERRING_INSTITUTION (TINS) .....	57
<b>STUDENT PERSONAL INFORMATION.....</b>	<b>58</b>
STATISTICS CANADA – PSIS .....	58

## Document Revision Summary

This section summarizes the changes that have been made to this document. Details of these changes can be found in the following pages, sorted first by version and then by table name.

Revision Date	Summary
<b>Version 2000</b>	
September 1, 2000	Initial draft created.
September 10, 2000	Final Revisions incorporated
October 31, 2001	Revisions incorporated
January 10, 2002	Corrections incorporated
<b>Version 2002</b>	
September 30, 2002	Version 2002
April 6, 2004	Definitions updated for FTE counting
<b>Version 2004</b>	
October 6, 2004	Version 2004
March 1, 2006	Definitions further updated for FTE counting
September 12, 2006	SSR table altered for collection of applicant data. CREDENTIAL_TYPE common table redefined.
May 8, 2006	Added Okanagan College to institution list
July 10, 2007	Added Waitlist code to SSR Application Status
September 17, 2007	Added Credential Type common table "PDCT" code
August 27, 2008	Edited STUDENT_SESSION_REGISTRATION (SSR) table to reflect new Aboriginal Data Standards
September 2, 2008	Edited tables: COURSE, PROGRAM, STUDENT_CREDENTIAL, STUDENT_SESSION_REGISTRATION, STUDENT_COURSE_ACHIEVEMENT, STUDENT_COURSE_REGISTRATIONS
May 5, 2009	PROGRAM, STUDENT_CREDENTIAL, STUDENT_SESSION_REGISTRATION, STUDENT_COURSE_REGISTRATIONS
February 10, 2010	STUDENT_SESSION_REGISTRATION.IMMIGRATION_STATUS
February 12, 2010	STUDENT_COURSE_REGISTRATION, COURSE_SECTION, CAMPUS
<b>Version 2010</b>	
August 12, 2010	COURSE_SECTION, PROGRAM, CIP, CREDENTIAL_TYPE
August 24, 2011	STUDENT_SESSION_REGISTRATION.BASIS_OF_ADMISSION
February 3, 2012	STUDENT_SESSION_REGISTRATION.IMMIGRATION_STATUS
September 2012	Edited tables: COURSE_SECTION, CIP, DISCIPLINE; added table STUDENT_COURSE_TRANSFER
March 2013	Edited tables: STUDENT_COURSE_REGISTRATION, CREDENTIAL_TYPE, FEE_SOURCE
September 2013	Edited tables: STUDENT_SESSION_REGISTRATION, CREDENTIAL_TYPE
February 2014	Edited tables: CREDENTIAL_TYPE
August 2014	Edited tables: STUDENT_CREDENTIALS
September 2015	Edited tables: STUDENTS, removed NSN added TWID
August 2021	Edited table: STUDENTS, modified GENDER
April 2023	Edited table: INSTITUTIONS, added REGION and ECONOMIC_REGION
May 2023	Edited table: INSTITUTIONS (added field GEOGRAPHIC_REGION). Added notes to TRANSFERRING_INSTITUTIONS. Updated code descriptions in COURSE_SECTION_DELIVERY_MODE (CSDM) and DELIVERY_MODE (DMOD). Changed STUDENT_COURSE_TRANSFER (SCT) primary key to include SENDING_INSTITUTION_CODE.

## Summary of Changes in **Version 2010**

This section summarizes the major changes that have been made to the Student/Program subject area since the last publication of Version 2004.

Table	Column	Revision Notes
COURSE_SECTION	CSEC_ADMIN_UNIT_1 (, _2, _3)	Added three free text fields into CSEC.
PROGRAM	PRO_ADMIN_UNIT_1 (, _2, _3)	Added three free text fields into PRO.
PROGRAM	CIP	This field can no longer have a value of null.
CIP	CODE	Replaced CISO with DACSO in column names.
CIP	CIP_CLUSTER.	Added field CIP_CLUSTER.
CREDENTIAL_TYPE	CODE, DESCRIPTION	Edited Professional Degree to First Professional Degree, and the descriptions of PDDP and PDCT to distinguish them from two new credential types. Added credential types Graduate Diploma (GRDP) and Graduate Certificate (GRCT).  Clarified the description of CERT and SCRT.
CREDENTIAL_TYPE	PERFORMANCE_CATEGORY	Updated to reflect new groupings.
FEE_SOURCE	CODE	Removed code 20, added code 26.
STUDENT_COURSE_FEE_TYPE	SCFT_Code	This field can no longer have a value of null.
STUDENT_COURSE_REGISTRATION	FEES_CODE	Removed code 20, added code 26.
STUDENT_SESSION_REGISTRATION	BASIS_OF_ADMISSION	Added as a text field.
	IMMIGRATION_STATUS	Clarifications to many fields, added one new field.
	ABORIGINAL_IDENTITY_INDICATOR	Updated the word “status” to “identity”.
STUDENT_COURSE_TRANSFER	All	Added this table.
COURSE	COURSE_LEVEL	Added value ‘R’.
DISCIPLINE	CODE	Edited CODE to 6 digits, nn.nnnn.
DISCIPLINE	CIP_CLUSTER	Added as a text field.
CREDENTIAL_TYPE	DESCRIPTION	Clarified the description of ADCT.

## Summary of Changes in Version 2004

This section summarizes the major changes that have been made to the Student/Program subject area since the last publication of Version 2002.

Table	Column	Revision Notes
CAMPUS	CODE	Size revised to 20 characters
COURSE	COURSE_LEVEL	Change to element data type in order to accommodate new 'S' & 'P' codes. Also change to element definition. Sep. 2, 2008: Re-wording of Course Level definition.
COURSE_SECTION	COURSE_HOUR_EQUIVALENT	Change to element definition. Include PLA activity in reporting
COURSE_SECTION	SECTION_TYPE	Change to element value list. '07' (co-op) added.
COURSE_SECTION	CAM_CODE	SIZE INCREASED TO 20 CHARACTERS
COURSE_SECTION	EXPECTED_COMPLETION_WEEKS	Change to element definition to specify exam weeks may or may not be included according to institution business practices.
CREDENTIAL_TYPE		Altered record set, including SCRT code to replace CITN code. New PERFORMANCE_CATEGORY and RANK columns.
CREDENTIAL_TYPE		New code ADCT added.
PROGRAM	FTE_DIVISOR_UNIT	New Element created to describe FTE_DIVISOR
PROGRAM	PROGRAM_GRADUATION_CREDIT_UNIT	Reverts to pre-June 2004 submission usage (i.e. describes PROGRAM_GRADUATION_CREDIT not FTE_DIVISOR)
PROGRAM	CTYP_CODE	Definition changed
STUDENT_COURSE_ACHIEVEMENT	PASS_FAIL_INDICATOR	Added a new allowed value of "N" meaning "Neither" or "Not Applicable" for cases such as Withdrawals where a section has a pass/fail component but the student did not pass or fail.
STUDENT_COURSE_REGISTRATION	CREDIT_ATTEMPTED	Change to element definition. "Credits" changed to read "learning units."
STUDENT_COURSE_REGISTRATION	CREDIT_ATTEMPTED_UNIT	Change to element definition. "Credits" changed to read "learning units."
STUDENT_COURSE_REGISTRATION	REGISTRATION_STATUS_DATE	Definition revised to align with FTE manual
STUDENT_COURSE_REGISTRATION	REGISTRATION_STATUS	Definition revised to remove Waitlist from allowed values.
STUDENT_COURSE_REGISTRATION	STUDENT_END_DATE	New element added.
STUDENT_COURSE_REGISTRATION	STUDENT_END_DATE	Definition revised to specify that for fixed entry sections the student end date should generally = the section end date, and that exam weeks may or may not be included according to institution business

Table	Column	Revision Notes
STUDENT_CREDENTIAL	CTYP_CODE	practices. Credential type added.
STUDENT_SESSION_REGISTRATION	APPLICATION_STATUS	Change to element definition and allowable values.
STUDENT_SESSION_REGISTRATION	APPLICATION_STATUS_DATE	Change to element definition.
STUDENT_SESSION_REGISTRATION	ABORIGINAL_IDENTITY_INDICATOR	Added to reflect new Aboriginal Data Standards
STUDENT_SESSION_REGISTRATION	FIRST_NATIONS_INDICATOR	Edited to reflect new Aboriginal Data Standards
STUDENT_SESSION_REGISTRATION	METIS_INDICATOR	Added to reflect new Aboriginal Data Standards
STUDENT_SESSION_REGISTRATION	INUIT_INDICATOR	Added to reflect new Aboriginal Data Standards
STUDENT_SESSION_REGISTRATION	IMMIGRATION_STATUS	Added status 06 – Refugees; removed Refugees from 04; Changed to “...as of session start date”
STUDENT_SESSION_REGISTRATION	CURRENT_POSTAL_CODE	Changed to “...as of session start date”
STUDENT_SESSION_REGISTRATION	CITZ_CODE	Changed to “...as of session start date”
STUDENT_SESSION_REGISTRATION	IMMIGRATION_STATUS	Edited the descriptions of status 03 – <u>Other Visa</u> by adding “refugee claimants”; 05 - <u>Non-Canadian, No Visa Status</u> by adding “offshore”; and 06 - Refugees by adding “also known as Convention Refugees”.

## Summary of Changes in Version 2002

This section summarizes the major changes that have been made to the Student/Program subject area since the publication of Version 2000.

Table	Column	Revision Notes
CAMPUS	CODE	A standard code for off-site activity has been added
COURSE_SECTION	LEVERAGED_INDICATOR	Element removed from DDEF Standards
CREDENTIAL_TYPE	CODE	New code added for programs that do not have a credential - NONE
PROGRAM	CTYP_CODE	Range of values change – MAY NOT BE NULL
PROGRAM	FTE_DIVISOR	New Element
PROGRAM	PROGRAM_LEVEL	Element removed from DDEF Standards
STUDENT_COURSE_ACHIEVEMENT	CREDIT_ACHIEVED	Change to element name, definition and table location– New name is CREDIT_ATTEMPTED, moved to STUDENT_COURSE_REGISTRATION table.
STUDENT_COURSE_ACHIEVEMENT	CREDIT_ACHIEVED_UNITS	Change to element name, definition and table location – New name is CREDIT_ATTEMPTED_UNIT, moved to STUDENT_COURSE_REGISTRATION table.
STUDENT_COURSE_ACHIEVEMENT	PLA_TYPE	New code added for Blended Assessment (B)
STUDENT_COURSE_ACHIEVEMENT	STUDENT_COURSE_REGISTRATION. REGISTRATION_STATUS_DATE	Added to Primary Key
STUDENT_COURSE_FEE_TYPE	All	<b>New Common Table.</b> Created to allow for mapping of new fee type codes to PSIS codes and provide indicator for base or leveraged activity. Includes definitions for all codes.
STUDENT_COURSE_REGISTRATION	REGISTRATION_STATUS_DATE	Added to Primary Key
STUDENT_COURSE_REGISTRATION	STUDENT_COURSE_FEE_TYPE	Revision to code set and creation of common table (STUDENT_COURSE_FEE_TYPE)
STUDENT_CREDENTIAL	CREDENTIAL_ACHIEVEMENT_DATE	Added to Primary Key
	IMMIGRATION_STATUS	New Element
STUDENT_PERSONAL_DATA	CREATE_DATE	New Element



## Summary of Changes in **Version 2000**

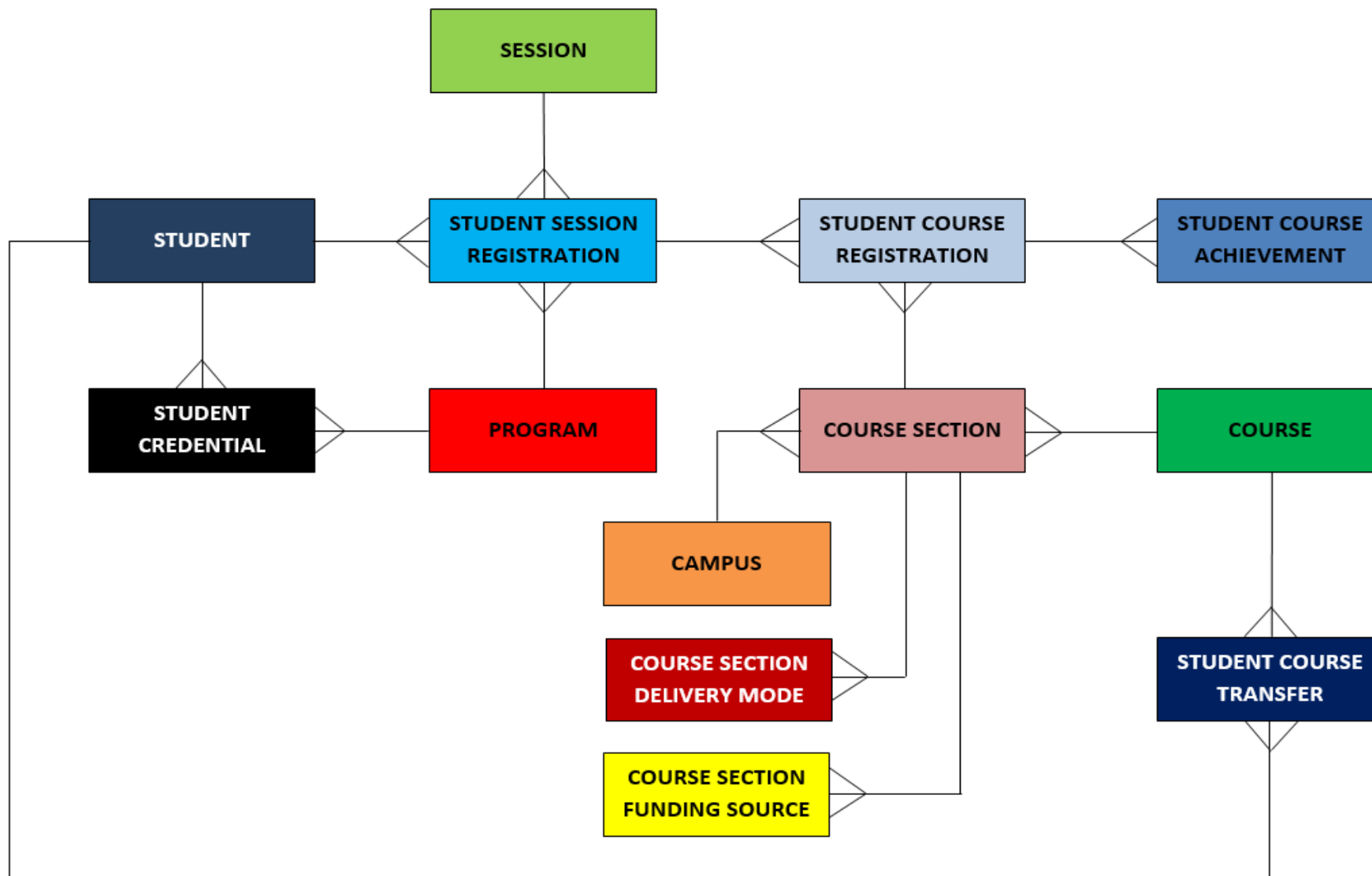
This section summarizes the major changes that have been made to the Student/Program subject area since the publication of Version 2.0.

Table	Column	Revision Notes
CAMPUS	New Table	
COURSE	Credit Value Unit Duration Hours Lab Hours Min Credit Value Max Credit Value Discipline DIS Code Practicum Duration Practicum Duration Unit	New Element New Element New Element Definition Revised Definition Revised Definition Revised New Element New Element
COURSE_SECTION	Start Date End Date Stable Enrollment Date Course Section Type Number Of Seats CAM INS Code CAM Code	Definition Revised Definition Revised Definition Revised New Element New Element corrected name New Element New Element
COURSE_SECTION_DELIVERY_MODE	New Table	
COURSE_SECTION_FUNDING_SOURCE	New Table	
PROGRAM	Delivery Code Program Graduation Credit Program Graduation Credit Unit Program Duration Hours PER Code	Definition Revised Name Revised New Element New Element New Element Name Revised Definition Revised

Table	Column	Revision Notes
SESSION	INS Code	Definition Revised
	Last Withdrawal Date	New Element
	PSIS Session Code	New Element
STUDENT	INS Code	Added to Key
	ID Number	Institutional offset removed
	NSN	New Element
	Postal code	New Element
	First Nations Indicator	Moved to SSR
	Disability Indicator	Moved to SSR
STUDENT_COURSE_ACHIEVEMENT	Achievement Status Date	Definition Revised
	Achievement Status	Definition Revised
	Transfer Type	Definition Revised
	TINS Code	New Element Name Revised
	Credit Achieved Unit	New Element
STUDENT_COURSE_REGISTRATION	Registration Status Date	Definition Revised
	Registration Status	Definition Revised, range of values changed
	Continuous Enroll Start Date	Definition Revised
	Billing Hours	New Element
	Studying Outside CA Indicator	New Element
	Student Course Fee Type	Definition Revised and range of values expanded
	AGY Code	Element name changed to Fee Code and Definition Revised

Table	Column	Revision Notes
STUDENT_SESSION_REGISTRATION	Application Status Date	Definition Revised
	Application Status	Definition Revised, range of values changed
	Initial Program Start Date	New Element
	Co-Op Indicator	New Element Name Revised
	First Nations Indicator	Moved from STU, Definition Revised
	Disability Indicator	Moved from STU, Definition Revised
	International Status	Definition Revised, element renamed Immigration Status
	Territory Code	Deleted
	Current Postal Code	New Element
	CTRY_Code	Definition Revised, element renamed Citz Code

# DDEF STUDENT 2010



## Institution Table Definitions

This section describes the set of data elements that are required to meet both the Ministry of Post-Secondary Education and Future Skills (PSFS, Ministry) and Statistics Canada's Post Secondary Information System (PSIS) reporting requirements, and must be submitted to the Central Data Warehouse by reporting institutions.

Data elements are identified as either required by the Ministry and/or PSIS. Institutions not currently collecting Ministry required elements must implement registration business practice changes in order to begin collecting this information. Elements that are only required to meet PSIS reporting are not mandatory, however institutions are encouraged to collect and report all PSIS required information.

**SHADED, BOLDED** elements in each table represent the table's "Primary Key". A Primary Key is a set of elements whose values together uniquely identifies a row in a table. The properties of a Primary Key are:

- No Primary Key value can appear in more than one row in the table (i.e., a Primary Key must be unique)
- No column that is part of the Primary Key can contain a null value.

**ITALICIZED, BOLDED** elements in each table represent a "Foreign Key". A Foreign Key is an element (or set of elements) whose values must match the corresponding elements in the Primary Key of the table referenced. If a Foreign Key value is not applicable/available, then it must be set to NULL. Foreign Key table names that are **UNDERLINED** reference Common Tables (described in Section 3).

Each table in this section is described with the following attributes:

<b>Column</b>	- The name of the table and column (element) defined.
<b>Type</b>	- The column data types, as follows: <ul style="list-style-type: none"> <li>• C(<i>n</i>) -Character, maximum size specified by <i>n</i>. For example, C(100) allows for text up to 100 characters.</li> <li>• N(<i>s,p</i>) -Numeric, maximum total number of digits including those to the right of the decimal (scale) specified by <i>s</i>, with <i>p</i> digits to the right of the decimal. For example, N(5,2) allows a maximum number of 999.99.</li> <li>• D -Date. Must be a valid combination of year, month and day.</li> </ul>
<b>Value</b>	- The allowable values that the referenced column may contain.
<b>Definition</b>	- Additional information about the column values including a brief description of the element.
<b>Version</b>	- The version that this element first appeared. V2000, V2002 & V2004 are previous versions of the standards, V2010 is the current version.
<b>Purpose</b>	- The intended purpose of this element. <u>Ministry</u> means that the element is to be used for Ministry reporting. <u>PSIS</u> means that the element is needed for PSIS reporting. Where PSIS is specified, the PSIS element reference has been noted.

Institution Tables are listed in alphabetical order.

## CAMPUS (CAM)

Information about the physical campuses owned or managed by an Institution.

Column	Type	Values	Comments	Version	Purpose	
<u>INSTITUTION</u>	INS_CODE	C(4)	Foreign Key (Common Table – page 52)	The INSTITUTION that owns or administers this CAMPUS.	V2000	Institution
CODE	C(20)	Text	A code that uniquely identifies this campus within an institution.  If an institution offers a course section at a location that is not owned or controlled by the institution (an example might be a course section that is delivered at a community centre) and the institution does not have an existing campus code for this activity the CAMPUS.CODE should be “OFF” for off-site.	V2000	PSIS SC6210 Institution	
NAME	C(50)	Text	The name of the campus.	V2000	Ministry	
FOREIGN_CAMPUS_INDICATOR	C(1)	Y, N	Indicates if the campus is located outside of Canada.  Y - <u>Yes</u> , the campus is a foreign campus and is located outside of Canada  N - <u>No</u> , the campus is not a foreign campus and is located within Canada	V2000	PSIS SD4310	
CREATE_DATE	D	System Date	The date the record is extracted from the source registration system, or the system date on the day this record is inserted or updated. Used for system maintenance purposes.	V2000	Institution	

## Notes

## COURSE (CRS) - Table 1 of 3

Information about the lowest level of a comprehensive unit of instruction delivered by an institution. A Course is designed to deliver a specific learning or training outcome, and is defined and identified by an Institution.

Column		Type	Values	Comments	Version	Purpose
<u>INSTITUTION</u>	INS_CODE	C(4)	Foreign Key (Common Table – page 52)	The INSTITUTION that delivers this COURSE.	V2.0	Ministry
CODE		C(20)	Text	The institution's unique code describing this COURSE	V2.0	Ministry PSIS IC3000
EFF_DATE		D	Valid Date	The date upon which the COURSE was first mounted, or was last significantly updated.	V2.0	Ministry
END_DATE		D	Valid Date, NULL	If applicable, the expected "decommissioning" date of the course. Report NULL if the COURSE is planned to run indefinitely.	V2.0	Ministry
TITLE		C(100)	Text	The title of the COURSE (from the course calendar)	V2.0	Ministry PSIS IC3020
DESCRIPTION		C(2000)	Text, NULL	The COURSE description (from the course calendar); first 2000 characters. Report NULL if a description is not available.	V2.0	Ministry
MIN_CREDIT_VALUE		N(7,3)	0.000 - 9999.999, NULL	The minimum credit value awarded upon course completion. Report NULL if the COURSE is non-credit.	V2.0 Revised V2000	Ministry PSIS IC3090
MAX_CREDIT_VALUE		N(7,3)	0.000 - 9999.999, NULL	The maximum possible credit value awarded upon course completion. <b>Must be greater than or equal to the Min_Credit_Value.</b> Report the same value as Min_Credit_Value if the COURSE does not have a range of credit values. Report NULL if the COURSE is non-credit.	V2.0 Revised V2000	Ministry PSIS IC3090

## COURSE (CRS) - Table 2 of 3

Column	Type	Values	Comments	Version	Purpose
CREDIT_VALUE_UNIT	C(2)	01, 02, 03, 04, 05, 06, 07, 99, NULL	<p>The unit of measure that describes the <code>Min_Credit_Value</code> and the <code>Max_Credit_Value</code>. Units are:</p> <ul style="list-style-type: none"> <li>01 - Credits</li> <li>02 - Credit hours</li> <li>03 - Semester hours</li> <li>04 - Course hours</li> <li>05 - Credit points</li> <li>06 - Courses</li> <li>07 - Student contact hours</li> <li>99 - Other units</li> </ul> <p>Report NULL if the <code>Min_Credit_Value</code> and <code>Max_Credit_Value</code> are NULL</p>	V2000	PSIS IC3091
DURATION_HOURS	N(6,2)	0.00 - 9999.00, NULL	<p>The normal time to complete the course for a full-time student by traditional course delivery. Include the duration of labs or On the Job Training (OJT) components that are an integral part of the course. OJT includes Practicum, Co-op Work Term, and Formal Work Experience. Duration is sum of student contact hours.</p> <p>If the course is delivered by a non-traditional method such as Distance Education, report what the normal duration would be for a full-time student if the course were delivered by a traditional delivery method.</p> <p>Duration includes exam week.</p> <p>Report NULL for courses having no set duration.</p>	V2000	PSIS IC3080
LAB_HOURS	N(6,2)	0.00 - 9999.00, NULL	<p>If lab work is a regular part of this course, the normal number of hours of Lab work required.</p> <p>Report NULL if the course does not include a Lab component.</p>	V2000	PSIS IC3110
PRACTICUM_DURATION	N(6,2)	0.00 - 9999.00, NULL	<p>If a practicum or On the Job Training (OJT) is a regular part of this course, the duration of practicum/OJT required. Used in conjunction with the <code>Practicum_Duration_Unit</code>.</p> <p>Report NULL if the course does not include a practicum component.</p>	V2000	PSIS IC3140
PRACTICUM_DURATION_UNIT	C(2)	Y, C, M, W, D, H, S, NULL	<p>The <code>Practicum_Duration</code> units.</p> <ul style="list-style-type: none"> <li>Y - Year, Academic (about 8 months)</li> <li>C - Year, Calendar (about 12 months)</li> <li>M - Month (about 30 days)</li> <li>W - Week (about 5 days)</li> <li>D - Day (about 7 hours)</li> <li>H - Hour (about 60 min)</li> <li>S - Session (about 4 months)</li> </ul> <p>Report NULL if the <code>Practicum_Duration</code> is NULL.</p>	V2000	PSIS IC3141



### COURSE (CRS) - Table 3 of 3

Column		Type	Values	Comments	Version	Purpose
COURSE_LEVEL (Rev. Sept., 2012)		C(1)	0 - 9, P, S, R, Null	<p>The purpose of this attribute is to facilitate the derivation of the student's current academic level of study, and to differentiate those courses for which academic level does not normally apply.</p> <p>Assign level 1 to courses typically taken in year 1 of a program, level 2 to courses typically taken in year 2, and so on. For programs that are one year in length assign level 1 to all associated courses.</p> <p>Assign level 0 or P to courses offered as preparatory to college level programming (ABE, ASE, ESL and other course programming to upgrade to post secondary levels) and to develop a life/career path as part of college preparation.</p> <p>Assign level S to skills courses specifically oriented toward workforce training, and level R to personal enrichment and general interest activity (see note 1). For Continuing Education courses associated with a program that awards a credential, use the most appropriate numeric level (normally "1" for pre-employment programs).</p>	V2.0 Revised V2010	Ministry
BILLING_COURSE_INDICATOR		C(1)	Y, N, NULL	<p>Indicates if this course is a billing or holding course.</p> <p>Y – Yes, this course is a billing course.</p> <p>N – No, this course is not a billing course</p> <p>NULL – Report NULL if unknown</p>	V2000	Ministry
<u>DISCIPLINE</u>	DIS_CODE	N(6,4)	Foreign Key, NULL (Common Table – page 46)	The Discipline Code that best describes the course content.	V2.0 Revised V2010	Ministry
CREATE_DATE		D	System Date	The date the record is extracted from the source registration system, or the system date on the day this record is inserted or updated. Used for system maintenance purposes.	V2.0 Revised V2000	Institution

### Notes

1. Whether a course is classified as 'R' (personal enrichment) or 'S' (skills) depends on the orientation of a course; it is not based on the motivations of individuals enrolled, but on the content of the course itself. If the course is oriented specifically to workforce training, then it is considered as skills activity; if it is geared toward general interest or personal development then it is considered personal enrichment.

## COURSE\_SECTION (CSEC) - Table 1 of 3

Information about course sections offered for student enrollment.

Column	Type	Values	Comments	Version	Purpose
COURSE	CRS_INS_CODE	C(4)	Foreign Key	V2.0	Ministry
	CRS_CODE	C(20)			
	CRS_EFF_DATE	D			
SECTION_NUMBER	C(20)	Text	The institution's unique course section number.	V2.0	Ministry PSIS - SC6070
START_DATE	D	Valid Date	For <i>Scheduled Enrollment Sections</i> , this date is the first day of activity, or the date upon which the course section starts.  For <i>Continuous Enrollment Sections</i> , this date is the first day upon which a student may start their studies.	V2.0 Revised V2000	Ministry PSIS - SC6020
END_DATE	D	Valid Date, NULL	For <i>Scheduled Enrollment Sections</i> , this date is the last day of activity, or the date upon which the course section ends (inclusive of the exam period).  For <i>Continuous Enrollment Sections</i> , this date is the last day upon which a student may start their studies.	V2.0 Revised V2000	Ministry PSIS - SC6021
STABLE_ENROLLMENT_DATE	D	Valid Date, NULL	The date upon which the institution will consider a student to be counted as enrolled in this course section, for headcount reporting purposes.  Report NULL if the section is continuous entry.	V2.0 Revised V2000	Ministry
COURSE_HOUR_EQUIVALENT	N(7,2)	0.00 - 00000.00, NULL	The nominal number of hours of formal instruction, plus the nominal time equivalent to formal instruction a student will receive to complete this course, independent of mode of delivery, assuming full-time attendance. Essentially equivalent to Student Contact Hours if this course section is offered via traditional instructor-led delivery mode.  If the section includes a lab and/or practicum component, the <code>Course_Hour_Equivalent</code> includes the lab and/or practicum hours.  Include PLA activity.  Report NULL if section is a Transfer.	V2.0 Revised V2004	Ministry
EXPECTED_COMPLETION_WEEKS	N(5,1)	0.0 - 9999.9, NULL	The number of weeks a student is normally expected to take to complete this section before they are expected to re-register. Assume 4.35 weeks per month. Exam weeks may or may not be included, depending on institution business practices.	V2.0	Ministry

### COURSE\_SECTION (CSEC) - Table 2 of 3

Column	Type	Values	Comments	Version	Purpose
NUMBER_OF_SEATS	N(4)	0 - 9999, NULL	<p>The number of seats available in this course section.</p> <p>Report NULL if this section does not have a physical classroom located on a campus owned or managed by the institution (e.g., distance learning).</p>	V2000	Ministry
SECTION_TYPE (see note 1)	C(2)	01, 02, 03, 04, 05, 06, 07, 99, NULL	<p>An indicator describing the section's primary content disclosure environment:</p> <p>01 - Lecture - This section primarily uses a lecture environment and may comprise to a lesser degree, lab, practicum/OJT and tutorial components.</p> <p>02 - Lab - This section primarily uses a laboratory environment and may comprise to a lesser degree, practicum/OJT, tutorial and lecture components.</p> <p>03 - Tutorial - This section primarily uses a tutorial environment and may comprise to a lesser degree, practicum/OJT, lab and lecture components.</p> <p>04 - Practicum/On the Job Training - This section primarily uses a Practicum/On the Job Training environment and may comprise to a lesser degree, lab, lecture and tutorial components.</p> <p>05 - Transfer – This course section has been created to track transfer credits.</p> <p>06 - Prior Learning Assessment (PLA) – This course section has been created to track PLA credits.</p> <p>07 - Cooperative Education (co-op) - This section represents a cooperative education enrolment, which is defined as follows: "Cooperative Education" is a partnership between students, employers, and post-secondary institutions. As an educational process, co-op education formally integrates a student's academic studies with paid, approved, career-related work experience in employer organizations.</p> <p>99 - Other - This section primarily uses an environment not described by any of the above.</p> <p>If the section has multiple types then prioritize by type with 01 the highest priority.</p> <p>Report NULL if the section type is Unknown or Not Applicable</p>	V2000 Revised V2004	Ministry

### COURSE\_SECTION (CSEC) - Table 3 of 3

Column	Type	Values	Comments	Version	Purpose
CAMPUS	CAM_INS_CODE	C(4)	Foreign Key, NULL  An institution-defined code describing the campus where the course section is delivered.  Report NULL if this section is not delivered in whole or in part on a physical campus location (e.g., Internet delivery mode).	V2000	Ministry PSIS - SC6210
	CAM_CODE	C(20)			
CSEC_ADMIN_UNIT_1		C(100)	Text, NULL  Free text field to allow institutions to include school/faculty/department for internal reporting using the CDW, particularly for FTE auditing. Three admin unit fields are provided at both the program and course section level.	V2010	Institution
CSEC_ADMIN_UNIT_2		C(100)	Text, NULL  Free text field to allow institutions to include school/faculty/department for internal reporting using the CDW, particularly for FTE auditing. Three admin unit fields are provided at both the program and course section level.	V2010	Institution
CSEC_ADMIN_UNIT_3		C(100)	Text, NULL  Free text field to allow institutions to include school/faculty/department for internal reporting using the CDW, particularly for FTE auditing. Three admin unit fields are provided at both the program and course section level.	V2010	Institution
CREATE_DATE		D	System Date  The date the record is extracted from the source registration system, or the system date on the day this record is inserted or updated. Used for system maintenance purposes.	V2.0 Revised V2000	Institution

### Notes

1. Section\_Type

The Section Type is the teaching environment in which the course section content is disclosed. The content can be disclosed using one or more technologies, reported in COURSE\_SECTION\_DELIVERY\_MODE.

2. Admin units added for October 2010; free text for institutional purposes.

## COURSE\_SECTION\_DELIVERY\_MODE (CSDM)

Information about the various technologies used to deliver a course section. Course Sections may have one or many Course Section Delivery Modes. Do not report COURSE\_SECTION\_DELIVERY\_MODE for sections where a delivery mode is not applicable (e.g., Transfer Sections).

Column		Type	Values	Comments	Version	Purpose
<u>COURSE_SECTION</u>	<u>CSEC_CRS_INS_CODE</u>	C(4)	Foreign Key	The COURSE_SECTION that this COURSE_SECTION DELIVERY MODE describes.	V2000	Ministry
	<u>CSEC_CRS_CODE</u>	C(20)				
	<u>CSEC_CRS_EFF_DATE</u>	D				
	<u>CSEC_SECTION_NUMBER</u>	C(20)				
	<u>CSEC_START_DATE</u>	D				
<u>DELIVERY_MODE</u>	<u>DMOD_CODE</u>	C(2)	Foreign Key (Common Table – page 47)	Indicates the method used to deliver this COURSE_SECTION in whole or in part  01 - In-Person Technology-Supported Learning 02 - Offline Distance Learning 03 - Online Learning 04 - Video Conference 05 - Audio Conference 06 - TV 07 - In-Person Non-Digital Learning 08 - Computer-Based Training (CBT) 09 - Hybrid Learning (Blended Learning) 99 - Other (not one of the above).	V2000	Ministry PSIS - SC6100- SC6180
DELIVERY_PERCENT		N(3)	1 - 100	The percent of the total course section that was delivered using the mode specified in the previous element.  The total <u>Delivery_Percent</u> for all COURSE_SECTION DELIVERY MODES for a Course Section must sum to 100%.	V2000	Ministry PSIS SC6100- SC6180
CREATE_DATE		D	System Date	The date the record is extracted from the source registration system, or the system date on the day this record is inserted or updated. Used for system maintenance purposes.	V2000	Institution

## Notes

## COURSE\_SECTION\_FUNDING\_SOURCE (CSFS)

Information about funding sources (Base and non-Base) that describe Course Sections. Course Sections may have one or many Funding Sources. Do not report COURSE SECTION FUNDING SOURCE for sections where a funding source is not applicable (e.g., Transfer Sections).

Column	Type	Values	Comments	Version	Purpose
<b>COURSE SECTION</b>	<b>CSEC CRS INS CODE</b>	<b>C(4)</b>	Foreign Key	V2000	Ministry
	<b>CSEC CRS CODE</b>	<b>C(20)</b>			
	<b>CSEC CRS EFF DATE</b>	<b>D</b>			
	<b>CSEC SECTION NUMBER</b>	<b>C(20)</b>			
	<b>CSEC START DATE</b>	<b>D</b>			
<b>FUNDING SOURCE</b>	<b>FUNS_CODE</b>	<b>C(4)</b>	Foreign Key (Common Table – page 50)	V2000	Ministry
NUMBER_OF_SEATS	N(4)	1 - 9999, NULL	The number of seats in the course section funded by the FUNDING SOURCE Code.  Report NULL if the section does not take place in a physical location (e.g., Internet delivery).	V2000	Ministry
CREATE_DATE	D	System Date	The date the record is extracted from the source registration system, or the system date on the day this record is inserted or updated. Used for system maintenance purposes.	V2000	Institution

## Notes

## PROGRAM (PRO) - Table 1 of 3

Information about a collection or series of courses constructed to achieve a specific learning objective (e.g. Accounting diploma, Bachelor of Science). Programs may also serve to establish a grouping for registration management (i.e. Adult Basic Education).

Column		Type	Values	Comments	Version	Purpose
<u>INSTITUTION</u>	INS_CODE	C(4)	Foreign Key (Common Table – page 52)	The INSTITUTION that administers this PROGRAM.	V2.0	Ministry
CODE		C(20)	Text	An Institution-defined program code.	V2.0	Ministry PSIS IP2000
EFF_DATE (see note 1)		D	Valid Date	The date upon which this program was first created, or was last significantly updated. Note that a change in the program divisor is a significant update to the program.	V2.0	Ministry FTE
END_DATE		D	Valid Date, NULL	If applicable, the expected "decommissioning" date of the program.	V2.0	Ministry
TITLE		C(100)	Text	The title of the program as it appears in the institution calendar.	V2.0	Ministry PSIS IP2020
DESCRIPTION		C(2000)	Text, NULL	The first 2000 characters of the program description, as it appears in the institution calendar; first 2000 characters.  Report NULL if a description is not available.	V2.0	Ministry
DELIVERY_CODE		C(2)	01, 02, 03, NULL	An indication of whether the Program is delivered on a full-time, part-time or either, at the student's option.  01 - Full-Time Program - the program is delivered on a full-time basis only.  02 - Part-Time Program - the program is delivered on a part-time basis only.  03 - Full-Time/Part-Time Program - the program is delivered on a full-time or part-time basis, at student's option.  Report NULL if not applicable (e.g., "Undeclared" program).	V2.0 Revised V2000	Ministry PSIS IP2100
EXPECTED_COMPLETION_TIME		N(5,1)	0.0 - 9999.9, NULL	The expected calendar duration required to complete the entire Program, based on the <u>Delivery_code</u>	V2.0	Ministry PSIS IP2070

## PROGRAM (PRO) - Table 2 of 3

Column		Type	Values	Comments	Version	Purpose
EXPECTED_COMPLETION_UNIT		C(1)	Y, C, M, W, D, H, NULL	Unit used in conjunction with Expected_Completion_Time.  Y - Year, Academic (about 8 months) C - Year, Calendar (about 12 months) M - Month (about 30 days) W - Week (about 5 days) D - Day (about 7 hours) H - Hour (about 60 min)  Report NULL if Expected_Completion_Time is NULL	V2.0	Ministry PSIS IP2071
<u>CIP</u>	CIP_CODE	N(6,4)	Foreign Key (Common Table – page 44)	The Classification of Instructional Programs code that best describes this program offering.  Report 99.9999 if not applicable (e.g., "Undeclared" program).	V2.0 Revised V2010	Ministry PSIS IP2030
<u>FUNDING SOURCE</u>	FUNS_CODE	C(4)	Foreign Key, NULL (Common Table – page 50)	The funding source code that describes the Ministry funding for this program. May also include older PDC codes if required for internal institutional reporting purposes.  Report '9999' if not applicable or "unknown".	V2.0 Revised V2004	Ministry PSIS IP2040
<u>CREDENTIAL TYPE</u> (see note 2)	CTYP_CODE	C(4)	Foreign Key (Common Table – page 46)	The highest type of credential the student will receive upon successful completion of this program. Programs with multiple exit points may allow students to receive lower credentials. "Credential" means a formal qualification, not just a certificate of attendance. Credential Types are listed in the Appendix in descending order of precedence.	V2.0 Revised V2004	Ministry PSIS IP2010
PROGRAM_DURATION_HOURS		N(5)	0 - 99999, NULL	The sum of the COURSE.Course_Hour_Equivalents for the courses normally required to complete the entire program.  <ul style="list-style-type: none"> <li>Include the whole program, not just the current report period.</li> <li>Exclude courses or program segments that are mainly on-the-job training or field placement or co-op work experience.</li> </ul> Only required if expected completion time is reported as 2 years or less.  Report NULL if not applicable (e.g., "Undeclared" program).	V2000	Ministry PSIS IP2060
PROGRAM_GRADUATION_CREDIT		N(6,2)	0.00 - 9999.99, NULL	The number of credits or units of academic achievement required to graduate from, or complete, the entire program.	V2000	Ministry PSIS IP2080



### PROGRAM (PRO) - Table 3 of 3

Column		Type	Values	Comments	Version	Purpose
PROGRAM_GRADUATION_CREDIT_UNIT		C(2)	01, 02, 03, 04, 05, 06, 07, 99, NULL	The unit of measure that describes the Program_Graduation_Credit. Units are: 01 - Credits 02 - Credit hours 03 - Semester hours 04 - Course hours 05 - Credit points 06 - Courses 07 - Student contact hours 99 - Other units Report NULL if Not applicable (e.g., non-credit Program)	V2000	PSIS IP2081
FTE_DIVISOR (see note 3)		N(6,2)	0.00 - 9999.99, NULL	The denominator used to calculate program FTEs. Represents the number of program learning units within a program that equals a full time load (100%) for an academic year as defined by the institution (in their Calendar, as approved by their Education Council, or as published on their website).	V2002	Ministry FTE
FTE_DIVISOR_UNIT		C(2)	01, 02, 03, 04, 05, 06, 07, 99, NULL	The unit of measure that describes the FTE_Divisor. Units are: 01 - Credits 02 - Credit hours 03 - Semester hours 04 - Course hours 05 - Credit points 06 - Courses 07 - Student contact hours 99 - Other units	V2004	Ministry FTE
PRO_ADMIN_UNIT_1		C(100)	Text, NULL	Free text field to allow institutions to include school/faculty/department for internal reporting using the CDW, particularly for FTE auditing. Two admin unit fields are provided at both the program and course section level.	V2010	Institution
PRO_ADMIN_UNIT_2		C(100)	Text, NULL	Free text field to allow institutions to include school/faculty/department for internal reporting using the CDW, particularly for FTE auditing. Two admin unit fields are provided at both the program and course section level.	V2010	Institution
PRO_ADMIN_UNIT_3		C(100)	Text, NULL	Free text field to allow institutions to include school/faculty/department for internal reporting using the CDW, particularly for FTE auditing. Two admin unit fields are provided at both the program and course section level.	V2010	Institution
<u>PROGRAM ENTRANCE REQUIREMENT</u>	PER_CODE	C(2)	Foreign Key, NULL (Common Table – page 53)	A code describing the normal educational entrance requirement to begin the program. If the program has more than one educational entrance requirement, report the one that is numerically highest in the list.  Report NULL if not applicable (non-program).	V2.0 Revised V2000	Ministry PSIS IP2150
CREATE_DATE		D	System Date	The date the record is extracted from the source registration system, or the system date on the day this record is inserted or updated. Used for system maintenance purposes.	V2.0 Revised V2000	Institution

Notes

1. Eff Date

This field's purpose is to enable institutions to report Programs codes where a version of a Program is qualified in their registration systems with an effective date, perhaps where a significant change is made to the program but the code does not change (for example, a change in the FTE divisor). Institutions that do not maintain a Program effective date should report a date that is the "likely" Program effective date (e.g., the date the institution first offered Programs).

2. Ctyp Code

Some institutions offer programs that are structured such that on completion of the first year of the program the student is awarded a Certificate, on completion of the second year of the program the student is awarded a Diploma, and on completion of four years the student is awarded a degree. The Definitions suggest that separate programs be reported, one for each credential type. However, if single program codes are used, enter the highest credential offered by the program. Credential type in the Student Credentials table is then used to identify the actual type of credential awarded at the different exit points.

3. FTE Divisor

The FTE Divisor is used to calculate the number of FTE's delivered for a particular program by an institution. The FTE Divisor will be used in conjunction with the SCR\_CREDITS\_ATTEMPTED element to calculate the total FTE's for the program as follows:

(SUM [SCR\_CREDITS\_ATTEMPTED, where the course activity has a registration status date within a specific date range (for example September 1, 2003 to August 31, 2004) for a specific program]) / (FTE\_DIVISOR for a specific program)

Example: The total FTE for a program for a single academic year:

Total Credits Attempted for Program A within single academic year	FTE Divisor for Program A	FTE's for Program A
3,450	30	115

4. Admin units added for October 2010; free text for institutional purposes.

## SESSION (SES)

Information about the periods of time, typically a year or less, during which students take courses at an institution. Sessions may be called "Terms" at some institutions (e.g., Winter 2000 Term).

Column		Type	Values	Comments	Version	Purpose
<u>INSTITUTION</u>	<u>INS_CODE</u>	C(4)	Foreign Key (Common Table – page 52)	The INSTITUTION that owns this SESSION information.	V2.0 Revised V2000	Ministry
CODE		C(8)	Text	An institution-defined code describing the session or 'term' during which students enroll in sections.	V2.0	Ministry
START_DATE		D	Valid Date	The start date of the session or term.	V2.0	Ministry PSIS ID1045
END_DATE		D	Valid Date	The end date of the session or term; must be greater than or equal to the Start Date.	V2.0	Ministry
DESCRIPTION		C(50)	Text	A description of the session or term (to appear on reports).	V2.0	Ministry
LAST_WITHDRAWAL_DATE		D	Valid Date, NULL	The last date in the session for the withdrawal from courses without academic penalty; must be between the Start Date and End Date. If the session has more than one withdrawal date report the date which is closest to the start of the term Report NULL if there is no withdrawal date for this session.	V2000	PSIS ID1065
ESIS_SESSION_CODE		C(6)	Text	A 6-character abbreviation of the SESSION Code required for PSIS reporting. This will be the same as code if code is <= 6 characters.	V2000	PSIS ID1035
CREATE_DATE		D	System Date	The date the record is extracted from the source registration system, or the system date on the day this record is inserted or updated. Used for system maintenance purposes.	V2.0 Revised V2000	Institution

## Notes

## STUDENT (STU) - Table 1 of 2

Information about individuals who have either:

- Applied to (or have been assigned to) at least one Program at the reporting institution, where that program application was either accepted, rejected, deferred or waitlisted, or;
- Have been awarded a credential at the reporting institution.

Column	Type	Values	Comments	Version	Purpose
<b><u>INSTITUTION</u></b>	<b>C(4)</b>	Foreign Key (Common Table – page 52)	The INSTITUTION that owns this STUDENT information.	V2.0 Revised V2000	Ministry PSIS
<b>ID_NUMBER</b>	<b>N(12)</b>	Valid Number	The unique (internal) student ID as used by the institution's registration system to identify the student. The ID number will be PIDM for Banner institutions, or Person_id for Colleague or ISN for SRS  The ID number used in this field must match the ID number provided to the Ministry for PEN validation for this student.	V2.0 Revised V2000	Ministry PSIS SD4000
PEN	C(10)	Valid PEN, NULL	Personal Education Number.	V2.0	Ministry
TWID	C(6)	Text, NULL	Trades Worker ID	V2010	Ministry
BIRTH_DATE	D	Valid Date, NULL	The student's date of birth.	V2.0	Ministry PSIS SD4030
GENDER	C(1)	M, F, X, U	The student's gender.  M (Male) - Persons whose current gender is male. This includes cisgender and transgender persons who are male. F (Female) - Persons whose current gender is female. This includes cisgender and transgender persons who are female. X (Non-Binary) - Persons whose current gender is not exclusively as male or female. It includes people who do not have one gender, have no gender, are gender fluid, or are Two-Spirit. U (Unknown) - Persons whose gender is not known at the time of data collection. It may or may not get updated at a later point in time. X is different than U.	V2.0	Ministry PSIS SD4040
POSTAL_CODE	C(10)	Valid Postal Code, NULL	The student's postal code or zip code at the time of the student's first application to the reporting institution. Canadian postal codes should be formatted 'X0X 0X0' with a space as indicated.	V2000	Ministry PSIS SD4160

<u>HIGH SCHOOL</u>		HS_CO DE	C(8)	Foreign Key, NULL (Common Table – page 51)	A code describing the last BC high school that the student attended, at the time of application to this Institution. Report NULL if unknown.	V2.0
HIGH_SCHOOL_ GRAD_DATE	D	Valid Date, NULL	The date upon which the student graduated from High School (if the High_School_Grad_Status = "G"). Report NULL if unknown.	V2.0	Ministry PSIS SD4325	Ministry PSIS SD4335

## STUDENT (STU) - Table 2 of 2

Column	Type	Values	Comments	Version	Purpose
HIGH_SCHOOL_GRAD_STATUS	C(1)	G, E, N, U	A code describing the student's High School graduation status.  G - Graduated from High School E - High School Equivalency (G.E.D.) N - Did not Graduate from High School U - Unknown	V2.0	Ministry PSIS SD4320
INSTITUTION_STUDENT_NUMBER	C(20)	Text	The institution's permanent identifier for the student while at this institution. This number is the ID that the student would identify with.	V2.0	Institution PSIS SD4000
CREATE_DATE	D	System Date	The date the record is extracted from the source registration system, or the system date on the day this record is inserted or updated. Used for system maintenance purposes.	V2.0 Revised V2000	Institution

## Notes

## STUDENT\_COURSE\_ACHIEVEMENT (SCA) - Table 1 of 4

Information about the final status of a student's section enrollment at the end of the Reporting Interval. Grade adjustments made after the end of the current Reporting Interval are reported in a subsequent Reporting Interval (i.e., there may be more than one STUDENT COURSE ACHIEVEMENT for a given STUDENT COURSE REGISTRATION).

Column	Type	Values	Comments	Version	Purpose
<b>STUDENT COURSE REGISTRATION</b>	<b>SCR SSR STU INS CODE</b>	C(4)	Foreign Key	V2.0 Revised V2000 Revised V2002	Ministry
	<b>SCR SSR STU ID NUMBER</b>	N(12)			
	<b>SCR SSR PRO INS CODE</b>	C(4)			
	<b>SCR SSR PRO CODE</b>	C(20)			
	<b>SCR SSR PRO EFF DATE</b>	D			
	<b>SCR SSR SES INS CODE</b>	C(4)			
	<b>SCR SSR SES CODE</b>	C(8)			
	<b>SCR CSEC CRS INS CODE</b>	C(4)			
	<b>SCR CSEC CRS CODE</b>	C(20)			
	<b>SCR CSES CRS EFF DATE</b>	D			
	<b>SCR CSEC SECTION NUMBER</b>	C(20)			
	<b>SCR CSEC START DATE</b>	D			
	<b>SCR REGISTRATION_STATUS_DATE</b>	D			
<b>ACHIEVEMENT_STATUS_DATE</b> (see note 1)	D	Valid Date	The date that the student's final Achievement_Status was recorded by the institution, as of the end of the reporting interval.	V2.0 Revised V2000	Ministry

## STUDENT\_COURSE\_ACHIEVEMENT (SCA) - Table 2 of 4

Column	Type	Values	Comments	Version	Purpose
ACHIEVEMENT_STATUS (see note 2)	C(1)	C, W, I, L, T, P, X, A	<p>The student's final registration status for the course section as of the end of the reporting interval.</p> <p>C - <u>Complete</u> - the student has completed their course requirements; the student may have passed or failed the section (if there is an evaluative component).</p> <p>W - <u>Withdraw</u> - the student has withdrawn from the course after the stable enrollment date; the student will (typically) receive a withdrawal status on their transcript.</p> <p>I - <u>Incomplete</u> - the student has not completed the course requirements, and has not withdrawn (e.g., did not sit the final exam); the student will (typically) receive an incomplete status on their transcript.</p> <p>L - <u>Leave</u> - the student has stopped out of the section for a short period of time, and will re-enter the course section. There is no academic penalty for this action.</p> <p>T - <u>Transfer</u> - the student has been assessed transfer credit for the section (see Transfer Type).</p> <p>P - <u>PLA</u> - the student has been assessed Prior Learning credit for the section (see PLA Type).</p> <p>X - <u>Extend</u> - the student did not finish the section, and has applied for an extension to continue with the section. There is no academic penalty for this action.</p> <p>A - <u>Audit</u> - the student audited the course section and did not receive a grade.</p> <p>There is no achievement record for sections in progress.</p>	V2.0 Revised V2000	Ministry PSIS - SC6030
GRADE	C(3)	Text, NULL	<p>The grade awarded to the student, if this section has an evaluative component. Used in conjunction with <i>Grade_Type</i>.</p> <p>Report NULL if this section is not graded.</p>	V2.0	Ministry



## STUDENT\_COURSE\_ACHIEVEMENT (SCA) - Table 3 of 4

Column		Type	Values	Comments	Version	Purpose
GRADE_TYPE		C(1)	P, L, O, NULL	<p>An indicator describing the grading system used, if Grade has been reported.</p> <p>P - <u>Percent</u> - Grade is reported as a percentage, in the range of 0 to 100 (or greater).</p> <p>L - <u>Letter</u> - Grade is reported as a letter grade (e.g., A+)</p> <p>O - <u>Other</u> - Grade is reported using a system that is not one of the above.</p> <p>Report NULL if this section is not graded.</p>	V2.0	Ministry
PASS_FAIL_INDICATOR (Rev. Sept. 2, 2008)		C(1)	P, F, N, NULL	<p>An indicator describing whether the student passed or failed the section, if this section has an evaluative component.</p> <p>P - <u>Pass</u> - student has passed the section</p> <p>F - <u>Fail</u> - student has failed the section</p> <p>N - <u>Neither</u> - student did not pass or fail, for cases such as withdrawals where a section has a pass/fail component but the student did not pass or fail.</p> <p>Report NULL if this section does not have a Pass/Fail component.</p>	V2.0 Revised V2004	Ministry
TRANSFER_TYPE		C(1)	B, I, N, O, U, NULL	<p>An indication of the type of transfer credit awarded, if the Achievement_Status is "T". Report credits awarded in Credit_Achieved.</p> <p>B - <u>BC Council on Admissions and Transfers Guide</u> - credit transfer is articulated in the BCAT guide.</p> <p>I - <u>Inter-Institution Articulation Agreement</u> - an articulation agreement has been negotiated between the institution where the student took the course and the institution awarding credit.</p> <p>N - <u>No Articulation Agreement In Place</u> - institution has to assess credit on a case by case basis.</p> <p>O - <u>Other</u> - credit is awarded based on articulation agreement not described by any of the codes.</p> <p>U - Unknown</p> <p>Report NULL if the Achievement_Status is not "T".</p>	V2.0 Revised V2000	PSIS - ST7060
<u>TRANSFERRING INSTITUTION</u>	TINS_CODE	C(5)	Foreign Key, NULL (Common Table – page 57)	<p>A code describing the "sending" Canadian institution where the student transferred credits from, where the Achievement_Status is "T".</p> <p>Report NULL if the institution code is not known.</p>	V2000	PSIS - ST7070

## STUDENT\_COURSE\_ACHIEVEMENT (SCA) - Table 4 of 4

Column	Type	Values	Comments	Version	Purpose
PLA_TYPE	C(1)	S, C, P, B, O, U, NULL	An indication of the type of PLA credit awarded, if the Achievement_Status is "P". Report credits awarded in Credit_Achieved.  S - Skills demonstration by student C - Challenge exam taken by student P - Assessment of Student's education/life skills "portfolio" B - Blended assessment O - Other type of assessment completed. U - Unknown  Report NULL if the Achievement_Status is not "P".	V2.0	
CREATE_DATE	D	System Date	The date the record is extracted from the source registration system, or the system date on the day this record is inserted or updated. Used for system maintenance purposes.	V2.0 Revised V2000	Institution

### Notes

#### 1. Achievement\_Status\_Date

Multiple STUDENT\_COURSE\_ACHIEVEMENTS may be reported for a single STUDENT\_COURSE\_REGISTRATION. For example, a student may appeal their grade, and be assigned a new grade after the Reporting Interval. Note that should a student appeal their grade **within** the Reporting Interval, only report the final grade issued.

#### 2. Achievement\_Status

Valid STUDENT COURSE ACHIEVEMENT status codes for corresponding STUDENT COURSE REGISTRATION statuses are:

STUDENT COURSE REGISTRATION Status Codes	Status at end of Reporting Interval	Valid STUDENT COURSE ACHIEVEMENT Status Codes
E - Enrolled	Student has <u>completed</u> their course section activity.	C - Complete W - Withdrew I - Incomplete L - Leave T - Transfer P - PLA X - Extend A - Audit
E - Enrolled	Student is <u>still enrolled</u> in the course section.	<b>No</b> STUDENT COURSE ACHIEVEMENT reported for this Reporting Interval.

## STUDENT\_COURSE\_REGISTRATION (SCR) - Table 1 of 3

Information about classes (sections of a course) a student has registered in and is stable enrolled, as of the section stable enrollment date.

- Registration activity prior to the stable enrollment date is not reported. Examples of non-reported activity include drops and cancellations.

Column	Type	Values	Comments	Version	Purpose	
STUDENT SESSION REGISTRATION	SSR_STU_INS_CODE	C(4)	Foreign Key	The STUDENT SESSION REGISTRATION that describes this STUDENT COURSE REGISTRATION.	V2.0 Revised V2000	Ministry
	SSR_STU_ID_NUMBER	N(12)				
	SSR_PRO_INS_CODE	C(4)				
	SSR_PRO_CODE	C(20)				
	SSR_PRO_EFF_DATE	D				
	SSR_SES_INS_CODE	C(4)				
	SSR_SES_CODE	C(8)				
COURSE SECTION	CSEC_CRS_INS_CODE	C(4)	Foreign Key	The COURSE SECTION that describes this STUDENT COURSE REGISTRATION.	V2.0 Revised V2000	Ministry
	CSEC_CRS_CODE	C(20)				
	CSES_CRS_EFF_DATE	D				
	CSEC_SECTION_NUMBER	C(20)				
	CSEC_START_DATE	D				
REGISTRATION_STATUS_DATE (see Note 1)	D	Valid Date	This date represents the last date for a student to add a course, or to withdraw from a course and receive a refund. This data varies considerably by institution and program type. During the Post-Secondary CDW extracting routines, stable enrollment date is often defined as being 15% into the course enrollment.	V2.0 Revised V2000 Revised V2002 Revised V2004	Ministry	
REGISTRATION_STATUS (see Note 2)	C(1)	E	The status that describes the student's section registration as follows:  E - <u>Enrolled</u> - as of the Registration_Status_Date, the student was still registered in the section and will be counted as an enrollment.	V2.0 Revised V2000 Revised V2004	Ministry	
CONTINUOUS_ENROLL_START_DATE	D	Valid Date, NULL	The date the student started their course activity in a section, where the student's start date in the section is not scheduled (i.e., is student dependent).  Report NULL if the section enrollment is scheduled (i.e., <i>not</i> continuous entry).	V2.0 Revised V2000 Revised V2004	Ministry  PSIS - SC6020	

## STUDENT\_COURSE\_REGISTRATION (SCR) - Table 2 of 3

Column	Type	Values	Comments	Version	Purpose
STUDENT_END_DATE	D	Valid Date, NULL	The date the student ended their course activity in either a scheduled or continuous entry course section. This date may be before the scheduled end of the section, such as for withdrawals or early completion or continuous enrolment course sections. For fixed entry sections the student end date should generally equal the section end date and should not include the time to enter grades. Exam weeks may or may not be included, depending on institution business practices.	V2004	Ministry
COURSE_AUDIT_INDICATOR (see note 3)	C(1)	Y, N, NULL	A code indicating whether or not the student has registered to audit the section.  Y - <u>Yes</u> - the student has registered to audit this section.  N - <u>No</u> - the student has not registered to audit this section.  Report NULL if section audit is not applicable (e.g., Transfer).	V2.0	Ministry
CREDIT_ATTEMPTED	N(7,3)	0.000 - 9999.999, NULL	The learning units attempted by the student for the following, and used in conjunction with <i>Credit_Attempted_Unit</i> : <ul style="list-style-type: none"><li>• Section completion.</li><li>• Transfer credits awarded.</li><li>• PLA learning units awarded.</li></ul> The institution must report learning units attempted in the <i>Credit_Attempted</i> field, independent of the type of activity (i.e., academic, CT, vocational, ABE), for the purposes of calculating FTEs. If the institution does not count the activity towards FTE reporting, then the <i>Credit_Attempted</i> is NULL.	V2.0 Revised V2004	Ministry
CREDIT_ATTEMPTED_UNIT	C(2)	01, 02, 03, 04, 05, 06, 07, 99, NULL	The unit of measure that describes <i>Credit_Attempted</i> element.  01 - Credits 02 - Credit hours 03 - Semester hours 04 - Course hours 05 - Credit points 06 - Courses 07 - Student Contact Hours 99 - Other units  Report NULL if <i>Credit_Attempted</i> is NULL.	V2000 Revised V2004	PSIS IC3091
<u>STUDENT_COURSE_FEE_TYPE</u>	SCFT_CODE	C(3)	Foreign Key (Common Table – page 55)	V2.0 Revised V2000	PSIS - SD4270

### STUDENT\_COURSE\_REGISTRATION (SCR) - Table 3 of 3

Column	Type	Values	Comments	Version	Purpose	
<u>FEE_SOURCE</u>	FEES_CODE	C(2)	Foreign Key, NULL (Common Table – page 49)	A code describing the <i>primary source</i> of fees paid by (or on behalf of) the student for this section. For contracts this is the source of funding for the student course registration. The codes are:  10 - Individual 21 - Provincial Government 22 - Federal Government 23 - Municipal Government 24 - Regional Government 25 - Aboriginal Government 26 - Aboriginal Institute Partnership (IAHLA) 30 - Private Industry 99 - Other (not one of the above)  Note: If the fee source is from multiple sources, the priority should be 26, 25, 22, 24, 23, 30, 21, 10.  Report NULL if unknown.	V2.0 Revised V2010	Ministry  PSIS - IC3040
BILLING_HOURS (see Note 4)		N(6,1)	0.0 - 99999.9, NULL	The number of hours of instruction purchased by the student, where a student can purchase a variable amount of individual instruction time. This typically applies to Adult Basic Education activity.	V2000	Ministry
STUDYING_OUTSIDE_CA_INDICATOR		C(1)	Y, N, NULL	Indicates if the student is studying this section outside of Canada.  Y - <u>Yes</u> , the student is studying outside of Canada, and includes: <ul style="list-style-type: none"><li>• Student studying at an institution that has a reciprocal agreement with the institution;</li><li>• Student studying at an affiliated institution;</li><li>• Student studying by distance education from outside Canada.</li></ul> N - <u>No</u> , the student is not studying outside of Canada.  Report NULL if unknown.	V2000	PSIS - SD4310
CREATE_DATE		D	System Date	The date the record is extracted from the source registration system, or the system date on the day this record is inserted or updated. Used for system maintenance purposes.	V2.0 Revised V2000	Institution

## Notes

### 1. Registration\_Status\_Date

The Registration Status Date must be between the course section start and end dates, inclusive.

Only stable enrollments are reported. Therefore, students who dropped, cancelled or were deleted from the section prior to the stable enrollment date **are not** reported to the Data Warehouse.

PLA and Transfer students are reported as enrolled in a PLA or Transfer "section", and/or with a PLA or Transfer Achievement Status. The Registration Status Date is then the date the PLA or Transfer was awarded.

### 2. Registration\_Status

Currently, warehouse reporting is on "Enrolled" registrations only.

### 3. Course\_Audit\_Indicator

Institutions that do not record audit status until the student is graded (i.e., may not know the audit status at registration) will report a NULL for Course Audit Indicator, and will report the audit status in the STUDENT\_COURSE\_ACHIEVEMENTS table (refer to STUDENT\_COURSE\_ACHIEVEMENTS for further information).

### 4. Billing\_Hours

Institutions use Billing Sections as a means of capturing individual hours of instruction purchased by a student. Billing Sections serve as a "place holder" to report the total hours of instruction purchased. A Billing Section is a "pseudo" course section, therefore there should not be a corresponding STUDENT\_COURSE\_ACHIEVEMENTS record reported for Billing Sections.

<b>STUDENT_COURSE_TRANSFER (SCT)</b>						
Information about transfer credit granted to students by receiving institutions. Required elements are related to student, receiving institution's course code information (or course proxy), and date transfer credit is awarded .						
Column		Type	Values	Comments	Version	Purpose
<u><b>STUDENT</b></u>	<u><b>STU_INS_CODE</b></u>	<b>C(4)</b>	Foreign Key	The STUDENT who has earned the transfer credit associated with this STUDENT COURSE TRANSFER.	V2.0	Ministry
	<u><b>STU_ID_NUMBER</b></u>	<b>N(12)</b>				
<u><b>COURSE</b></u>	<u><b>CRS_INS_CODE</b></u>	<b>C(4)</b>	Foreign Key	The receiving institution's COURSE that describes this STUDENT COURSE TRANSFER. May be a "dummy" or proxy course to allow recording of block transfer.	V2.0	Ministry
	<u><b>CRS_CODE</b></u>	<b>C(20)</b>				
	<u><b>EFF_DATE</b></u>	<b>D</b>				
<u><b>CREDIT TRANSFER DATE</b></u>		<b>D</b>	Valid Date	Date transfer credit is granted. If only the term is known, report the start date of the term.	V2012	Ministry
<u><b>SENDING INSTITUTION CODE</b></u>		<b>C(5)</b>	Foreign Key, NULL	The 5 digit PSIS sending institution code.	V2012	Ministry
TRANSFER_CREDIT_GRANTED		<b>N(7,3)</b>	0.000 - 9999.999, NULL	The amount of transfer credit granted to the student for this course.	V2012	Ministry
TRANSFER_CREDIT_UNIT		<b>C(2)</b>	01, 02, 03, 04, 05, 06, 07, 99, NULL	The unit of measure that describes the TRANSFER_CREDIT_GRANTED:  01-Credits 02-Credit hours 03-Semester hours 04-Course hours 05-Credit points 06-Courses 07-Student contact hours 99-Other units	V2012	Ministry
CREDIT_ASSIGNMENT_TYPE		<b>C(2)</b>	01,02, 03, NULL	The credit assignment type:  01 - Assigned Credit: Credit granted for a specific course when a course from another institution is considered equivalent to one at the receiving institution  02 - Unassigned Credit: Credit given when a course or program is considered worthy of credit but does not have a specific equivalent at the receiving institution  03 - Block Transfer Credit: Block transfer is the process whereby a block of credits is granted to students who have successfully completed a certificate, diploma or cluster of courses that is recognized as having an academic wholeness or integrity, and that can be related meaningfully to a degree program or other credential	V2012	Ministry
CREATE DATE		<b>DATE</b>	System Date	The date the record is extracted from the source registration system, or the system date on the day this record is inserted or updated. Used for system maintenance purposes.		

## Notes

## STUDENT\_CREDENTIAL (SC)

Information about credentials earned by a student and optionally issued to that student.

Column	Type	Values	Comments	Version	Purpose
<b>STUDENT</b>	<b>STU_INS_CODE</b>	<b>C(4)</b>	Foreign Key	V2.0	Ministry
	<b>STU_ID_NUMBER</b>	<b>N(12)</b>			
<b>PROGRAM</b>	<b>PRO_INS_CODE</b>	<b>C(4)</b>	Foreign Key	V2.0	Ministry
	<b>PRO_CODE</b>	<b>C(20)</b>			
	<b>PRO_EFF_DATE</b>	<b>D</b>			
<b>CREDENTIAL TYPE</b> (see note 2)	<b>CTYP_CODE</b>	<b>C(4)</b>	Foreign Key (Common Table – page 46)	V 2.0 Revised V2004	Ministry PSIS IP2010 SP2010
<b>CREDENTIAL_ACHIEVEMENT_DATE</b> (see note 1)	<b>D</b>	Valid Date	The date the student earned the credential.	V 2.0 Revised V2002	Ministry PSIS SP5100 SP5120
<b>CREDENTIAL_ISSUED_INDICATOR</b>	<b>C(1)</b>	Y, N, NULL	An indication of whether the earned credential was actually issued to the student.  Y - the credential earned by the student was issued to the student.  N - the credential earned by the student was not issued to the student.  Report NULL if unknown.	V 2.0	Ministry
<b>INSTITUTION</b>	<b>INS_CODE</b>	<b>C(4)</b>	Foreign Key, NULL (Common Table – page 52)	V 2.0	Ministry



IMMIGRATION_STATUS	C(2)	00, 01, 02, 03, 04, 05, 06, 07, NULL	<p>A Code indicating the immigration status of a student as of the credential achievement date.</p> <p>00 - <u>Canadian Citizen</u>, including Inuit, North American Indian, Metis and naturalized Canadian.</p> <p>01 - <u>Permanent Resident</u>, (formerly called landed immigrant) with permanent resident card or letter from Citizenship and Immigration Canada.</p> <p>02 - <u>Student Visa</u>: a permit obtained by a student to enter Canada for the sole purpose of attending an educational institution, international student, incoming exchange student.</p> <p>03 - <u>Other Visa or Permit</u>, including students who are in Canada on diplomatic, trade or other missions, refugee claimants, visitor visas, international short stay (holiday), work permit other than Live In Caregiver (see 07).</p> <p>04 - <u>Non-Canadian, Status Unknown</u> foreign/international students in Canada whose status is unknown.</p> <p>05 - <u>Non-Canadian, No Visa Status</u>, student is studying outside Canada; e.g. studying via the Internet, offshore students.</p> <p>06 - <u>Refugee</u>, (formerly reported under 04), protected persons also known as Convention Refugees.</p> <p>07 - <u>Live In Caregivers</u>, in Canada with a work permit under the Live In Caregiver Program.</p> <p>Report NULL if the Immigration_Status is unknown.</p>	V2010	Ministry
CREATE_DATE	D	System Date	The date the record is extracted from the source registration system, or the system date on the day this record is inserted or updated. Used for system maintenance purposes.	V2.0 Revised V2000	Institution

## Notes

### 1. Credential\_Achievement\_Date

Institutions who do not have a Degree Audit process in place will not necessarily know a student has earned a credential until the student has applied for a credential. For institutions without Degree Audit, the Credential\_Achievement\_Date will be the date the student was assessed as having earned the credential (after having first applied).

### 2. CTYP\_CODE

The type of credential the student will earn upon successful completion of an exit point for this program. A Credential is a formal qualification resulting from studies containing evaluative components; it is not just a certificate of attendance. Credential Types are listed in the Credential Types common table

## STUDENT\_SESSION\_REGISTRATION (SSR) - Table 1 of 4

Information about the sessions (terms) for which an applicant has applied to begin a Program, or the sessions in which student started courses. Students may or may not complete their course activity within a Session.

Column		Type	Values	Comments	Version	Purpose
STUDENT	STU_INS_CODE	C(4)	Foreign Key	The STUDENT that has registered for this STUDENT SESSION REGISTRATION.	V2.0 Revised V2000	Ministry
	STU_ID_NUMBER	N(12)				
PROGRAM	PRO_INS_CODE	C(4)	Foreign Key	The PROGRAM that describes this STUDENT SESSION REGISTRATION.	V2.0	Ministry
	PRO_CODE	C(20)				
	PRO_EFF_DATE	D				
SESSION	SES_INS_CODE	C(4)	Foreign Key	The SESSION that describes this STUDENT SESSION REGISTRATION.	V2.0	Ministry
	SES_CODE	C(8)				
APPLICATION_STATUS_DATE (see note 1)		D	Valid Date, NULL	The date the Application_Status changed to its current value. Report NULL if not available or not applicable. Report only the <u>final</u> Application Status for a Student.	V2.0 Revised V2004	Ministry
APPLICATION_STATUS		C(1)	A, Q, W, O, R	The highest status of the student's application for this session of a program as of the Application Status Date, in ascending order (lowest to highest).  A - <u>Applied</u> – Applicant applied to the program.  Q - <u>Qualified</u> – Applicant was evaluated as being qualified for the program.  W - <u>Waitlisted</u> – Applicant was qualified and waitlisted for the program.  O - <u>Offered</u> - the student has been offered admission, or invited to register.  R - <u>Registered</u> – the student is registered in this program.	V2.0 Revised V2004	Ministry
BASIS_OF_ADMISSION		C(20)	•BC High School •BC Associate Degree •BC College •Undergraduate Degree •Graduate Degree •Other •Unknown NULL	The academic basis on which the student was admitted for the first time to the study level (undergraduate or graduate) at the institution. Provide a basis of admission for both undergraduate and graduate students.	V2010	Ministry

## STUDENT\_SESSION\_REGISTRATION (SSR) - Table 2 of 4

Column	Type	Values	Comments	Version	Purpose
IMMIGRATION_STATUS (Rev. February, 2012)	C(2)	00, 01, 02, 03, 04, 05, 06, 07, NULL	<p>A code indicating the immigration status of a student as of the session start date.</p> <p>00 - <u>Canadian Citizen</u>, including Inuit, North American Indian, Metis and naturalized Canadian.</p> <p>01 - <u>Permanent Resident</u>, (formerly called landed immigrant) with permanent resident card or letter from Citizenship and Immigration Canada.</p> <p>02 - <u>Student Visa</u>: a permit obtained by a student to enter Canada for the sole purpose of attending an educational institution, international student, incoming exchange student.</p> <p>03 - <u>Other Visa or Permit</u>, including students who are in Canada on diplomatic, trade or other missions, refugee claimants, visitor visas, international short stay (holiday), work permit other than Live In Caregiver (see 07).</p> <p>04 - <u>Non-Canadian, Status Unknown</u> foreign/international students in Canada whose status is unknown.</p> <p>05 - <u>Non-Canadian, No Visa Status</u>, student is studying outside Canada; e.g. studying via the Internet, offshore students.</p> <p>06 - <u>Refugee</u>, (formerly reported under 04), protected persons also known as Convention Refugees.</p> <p>07 - <u>Live In Caregivers</u>, in Canada with a work permit under the Live In Caregiver Program.</p> <p>Report NULL if the Immigration Status is unknown.</p>	V2.0 Revised V2004	<p>Ministry PSIS SD4290</p> <p>Canada- BC Immigration Agreement 01, 06, 07 = "Federal Reportable"</p>
ABORIGINAL_IDENTITY_INDICATOR	C(1)	Y, N, NULL	<p>An indication of the student's self-declaration of their Aboriginal identity to the institution.</p> <p>Y- Yes, student has declared self as an Aboriginal identity individual.</p> <p>N - Student has declared self as <b>not</b> an Aboriginal identity individual.</p> <p>NULL - The student has not answered the question or has not reported their Aboriginal identity to the institution.</p>	V2.0 Revised V2004	
FIRST_NATIONS_INDICATOR	C(1)	Y, NULL	<p>An indication of the student's self-declaration of their First Nations identity to the institution.</p> <p>Y- Yes, student has declared self as a First Nations individual.</p> <p>NULL - The student has not declared self as a First Nations individual.</p>	V2.0 Revised V2004	Ministry PSIS SD4210

### STUDENT\_SESSION\_REGISTRATION (SSR) - Table 3 of 4

Column	Type	Values	Comments	Version	Purpose
METIS_INDICATOR	C(1)	Y, NULL	An indication of the student's self-declaration of their Métis identity to the institution.  Y- Yes, student has declared himself or herself as Métis individual.  NULL - The student has not declared self as a Métis Individual.	V2.0 Revised V2004	Ministry PSIS SD4210
INUIT_INDICATOR	C(1)	Y, NULL	An indication of the student's self-declaration of their Inuit identity to the institution.  Y- Yes, student has declared self as an Inuit individual.  NULL - The student has not declared self as an Inuit individual.	V2.0 Revised V2004	Ministry PSIS SD4210
DISABILITY_INDICATOR	C(1)	Y, N, NULL	An indication of the student's self-declaration of their disability status to the institution.  Y - <u>Yes</u> , student has self-declared himself or herself as having a disability.  N - <u>No</u> , student has self-declared himself or herself as <b>not</b> having a disability.  Report NULL if the student has not answered the question on the admissions form or has not reported their disability status to the institution.	V2.0 Revised V2000	Ministry PSIS SD4215
INITIAL_PROGRAM_START_DATE (see note 3)	D	Valid Date, NULL	The start date of the <b>first</b> Session during which the student <b>first</b> enrolled in classes at this institution, for this Program.  Report NULL if unknown.	V2000	PSIS SP5010

## STUDENT\_SESSION\_REGISTRATION (SSR) - Table 4 of 4

Column		Type	Values	Comments	Version	Purpose
CO_OP_INDICATOR		C(1)	Y, N, NULL	An indication of whether the student was classified as a Co-op student in this program during this session.  Y - <u>Yes</u> , student was classified as a Co-op student for this session.  N - <u>No</u> , student was not classified as a Co-op student for this session.  Report NULL if not applicable.	V2000	Ministry PSIS SP5070
CURRENT_POSTAL_CODE (Rev. Sept. 2, 2008)		C(10)	Text, NULL	The student's postal code or zip code as of the session start date. Canadian postal codes should be formatted "X0X 0X0" with a space as indicated.	V2.0 Revised V2004	Ministry PSIS SD4060
<u>CITIZENSHIP</u>	<u>CITZ_CODE</u> (Rev. Sept. 2, 2008)	C(2)	Foreign Key, NULL (Common Table – page 45)	The student's citizenship as of the session start date.  Report NULL if unknown.	V2.0 Revised V2004	Ministry PSIS SD4280
CREATE_DATE		D	System Date	The date the record is extracted from the source registration system, or the system date on the day this record is inserted or updated. Used for system maintenance purposes.	V2.0 Revised V2000	Institution

### Notes

#### 1. Application\_Status\_Date

If a student changes from A (applied) to Q (qualified), the Application\_Status\_Date would be the date from the administrative records that reflects this change in status, as only the highest Application\_Status for a program application is reported. Where no application admittance date is available, report NULL.

#### 2. Initial\_Program\_Start\_Date

This field can be left NULL for Institutions who wish to convert a sufficient number of years of historical data to enable derivation of this element.

## Common Table Definitions

Common Tables are code validation tables that are supplied to institutions with the initial setup of their Data Warehouse. Periodically, new codes are added to the Common Tables as requirements change (discontinued codes are not deleted). Common Tables are referenced by Institution Tables where noted in the previous section. The common tables are (in alphabetical order):

- CIP (CIP)
- CITIZENSHIP (CITZ)
- CREDENTIAL\_TYPE (CTYP)
- DELIVERY\_MODE (DMOD)
- DISCIPLINE (DIS)
- FEE\_SOURCE (FEES)
- FUNDING\_SOURCE (FUNS)
- HIGH\_SCHOOL (HS)
- INSTITUTION (INS)
- PROGRAM\_ENTRANCE\_REQUIREMENT (PER)
- SCHOOL DISTRICT (SD)
- STUDENT\_COURSE\_FEE\_TYPE (SCFT)
- TRANSFERRING\_INSTITUTION (TINS)

## CIP (CIP)

Information about Classification of Instructional Program codes as referenced by PROGRAM.

Column	Type	Values	Comments	Version	Purpose
CODE	N(6,4)	Number	CIP Code (nn.nnnn)	V2.0	Ministry
DESCRIPTION	C(200)	Text	The CIP Code description	V2.0	Ministry
CIP_CLUSTER	C(50)	Text	Program area used for data reporting	V2010	Ministry
CREATE_DATE	D	Date	The date the record was added or updated in the common table	V2000	Ministry

## Notes

The current list of CIP codes, as obtained from the CIP 2011 on-line manual, is available separately. In addition, CIP 99.9999 has been added to associate with undeclared program activity, and 89.9992 has been added to associate with Continuing or Community program enrolments that do not have an identifiable instructional area CIP.

CITIZENSHIP (CITZ)

Information about Citizenship codes as referenced by STUDENT SESSION REGISTRATION.

Column	Type	Values	Comments	Version	Purpose
CODE	C(2)	Text	2-Character Country code indicating country of citizenship	V2000	Ministry
NAME	C(100)	Text	The name of the Citizenship Code	V2000	Ministry
UPDATE_DATE	D	Date	The date the record was added or updated in the common table	V2000	Ministry

Notes

This table was the Country table in V2.0



## CREDENTIAL\_TYPE (CTYP)

Information about the type of credential earned by a student in this Program upon completion, as referenced by PROGRAM. A Credential is a formal qualification resulting from studies containing evaluative components; it is not just a certificate of attendance. Credential\_Type is applied to both Program and Student\_Credential. Programs awarding credentials for participation without evaluative components should be coded NONE.

Column	Type	Values	Comments	Version	Purpose
CODE	C(4)	Text	Credential Type code (see table below)	V2.0 Revised V2004	Ministry
DESCRIPTION	C(1000)	Text	Credential Type description (see table below)	V2.0 Revised V2004	Ministry
PERFORMANCE_CATEGORY	C(20)	Text	Ministry Performance Measure Category	V2004	Ministry
UPDATE_DATE	D	Date	The date the record was added or updated in the common table	V2000	Ministry

CREDENTIAL TYPE		
CODE	DESCRIPTION	PERFORMANCE_CATEGORY
DOCT	Doctorate (earned)	Graduate and First Professional
MAST	Master's Degree	
GRDP	Graduate Diploma: Awarded on completion of programs that require a Baccalaureate degree for entrance and are normally greater than 12 months of full-time equivalent study. The GRDP is considered graduate level and associated courses are usually above the undergraduate level (e.g. 500).	
GRCT	Graduate Certificate: Awarded on completion of programs that require a Baccalaureate degree for entrance and are normally between 3 and 12 months of full-time equivalent study. The GRCT is considered graduate level and associated courses are usually above the undergraduate level (e.g. 500).	
PDDP	Post-degree Diploma: Awarded on completion of programs that require a Baccalaureate degree for entrance and are normally greater than 12 months of full-time equivalent study. The PDDP is not considered graduate level because associated courses are at an undergraduate level.	
PDCT	Post-degree Certificate: Awarded on completion of programs that require a Baccalaureate degree for entrance and are normally between 3 and 12 months of full-time equivalent study. The PDCT is not considered graduate level because associated courses are at an undergraduate level.	
PDEG	The "FIRST PROFESSIONAL DEGREE" designation is limited to programs in law, medicine, dentistry, optometry, pharmacy, and veterinary medicine. Note that Bachelor's Degrees in Engineering, Business or Education are not First Professional Degrees; these should be classified as BACHELORS DEGREE.	
BACH	Baccalaureate Degree	Bachelors
ADIP	Advanced Diploma: Awarded on completion of programs that require a diploma for entrance and are normally greater than 12 months of full-time equivalent study.	Diploma
ADCT	Advanced Certificate: Awarded on completion of programs that require a minimum of a certificate for entrance and are normally between 3 and 12 months of full-time equivalent study.	Certificate
ADGR	Associate Degree: Awarded on completion of provincially defined academic arts or science programs consisting of 60 semester credits of first and second year transferable courses across a range of disciplines.	Diploma
DIPL	Diploma: Awarded on completion of programs at the post-secondary level normally between 12 and 36 months of full-time equivalent study.	Diploma
CERT	Certificate: Awarded on completion of programs at the post-secondary level normally between 3 and 12 months of full-time equivalent study (at least 288 contact hours).	Certificate
APPR	Apprenticeship: Awarded upon completion of a formal apprenticeship program (excludes entry level trades training). While the credential is awarded not by the institution but by an external accrediting agency (STBC), the institution identifies the program as an apprenticeship program by using this credential code.	Excluded
SCRT	Short Certificate: Awarded on completion of programs at the post-secondary level of less than the equivalence of 3 months of full-time study (less than 288 contact hours). May include short programs for which the institution awards 'certificates', citations or non-credit credentials, and includes short professional certificates.	Excluded
OTHR	Program offers a credential based on evaluative components, but not one of the above.	Excluded
NONE	Program does not offer a credential under these definitions.	Excluded
DEVL	Developmental Credential: Awarded as a certificate or diploma upon completion of a developmental level program (e.g., high school diploma, ESL certificate). Includes the BC Adult Dogwood.	Developmental

## Notes

1. New codes for GRDP and GRCT added for October 2010

## DELIVERY\_MODE (DMOD)

Information about the modes by which COURSE SECTIONS may be delivered.

Column	Type	Values	Comments	Version	Purpose
CODE	C(2)	Text	The Delivery Mode code	V2000	Ministry
NAME	C(100)	Text	A description of the Delivery Mode code	V2000	Ministry
UPDATE_DATE	D	Date	The date the record was added or updated in the common table	V2000	Ministry

DELIVERY_MODE	
CODE	DESCRIPTION
01	In-Person Technology-Supported Learning
02	Offline Distance Learning
03	Online Learning
04	Video Conference
05	Audio Conference
06	TV
07	In-Person Non-Digital Learning
08	Computer-Based Training (CBT)
09	Hybrid Learning (Blended Learning)
99	Other (not one of the above)

## Notes

## DISCIPLINE (DIS)

Information about Discipline Codes referenced by COURSE.

Column	Type	Values	Comments	Version	Purpose
CODE	N(6,4)	Number	Discipline Code (nn.nnnn)	V2010	Ministry
DESCRIPTION	C(200)	Text	The Discipline Code description	V2010	Ministry
CIP_CLUSTER	C(100)	Text	Program area used for data reporting	V2010	Ministry
UPDATE_DATE	D	Date	The date the record was added or updated in the common table	V2010	Ministry

## Notes

- The Discipline Codes are derived from the current list of CIP codes, as obtained from the CIP 2011 on-line manual, available separately.

## FEE\_SOURCE (FEES)

Information about the primary source of fees paid by (or on behalf of) a Student.

Column	Type	Values	Comments	Version	Purpose
CODE	C(2)	Text	Fee Source code (see table below)	V2000	Ministry
DESCRIPTION	C(100)	Text	Fee Source description (see table below)	V2000	Ministry
UPDATE_DATE	D	Date	The date the record was added or updated in the common table	V2000	Ministry

FEE_SOURCE		
CODE	TITLE	DESCRIPTION
10	Individual	
21	Provincial Government	Funding from a provincial ministry other than Advanced Education.
22	Federal Government	Use for federal government contracts, Coast Guard, DND, etc.
23	Municipal Government	
24	Regional Government	Eg. CRD, GVRD, fire regions, health regions
25	Aboriginal Government	First Nations communities, not including IAHLA institutions.
26	Aboriginal Institute Partnership (IAHLA)	Partnerships with one of the Indigenous Adult Higher Learning Association <sup>1</sup> (IAHLA) institutions.
30	Private Industry (General)	
99	Other (none of the above)	

## Notes

1. Indigenous Adult Higher Learning Association (IAHLA) institutions: <http://www.iahla.ca/current-member-institutes>

## FUNDING\_SOURCE (FUNS)

Information about Program and Course Section which includes Ministry of Advanced Education targeted activities as indicated annually in Budget and Accountability letters. This table incorporates the former PDC table.

Column	Type	Values	Comments	Version	Purpose
CODE	C(4)	Text	The Funding Source code	V2000	Ministry
NAME	C(100)	Text	The Funding Source description	V2000	Ministry
FUNDING_TYPE	C(1)	F, N, L (under review)	The type of funding source code:  F - Formula Funding - Base funded (typically associated with PDC codes) N - Non-Formula Funding - Base funded L - Leveraged - Non-Base funded		
UPDATE_DATE	D	Date	The date the record was added or updated in the common table	V2000	Ministry

## Notes

See current version of Central Data Warehouse Submission Guide for list of allowed Funding Source codes.

## HIGH\_SCHOOLS (HS)

Information about BC High Schools as referenced by STUDENT.

Column	Type	Values	Comments	Version	Purpose
CODE	C(8)	Text	BC High School code	V2.0	Ministry
NAME	C(100)	Text	The name of the High School	V2.0	Ministry
CITY	C(7)	Text, NULL	City where the High School is located	V2.0	Ministry
POSTAL_CODE	C(10)	Text, NULL	The postal code of the High School	V2.0	
SD_CODE	N(3)	Number, NULL	The School District code of the High School	V2.0	
UPDATE_DATE	D	Date	The date the record was added or updated in the common table	V2000	Ministry

## Notes

The current list of High School codes (as obtained from the Ministry of Education's Web Site)

These codes have been added for high schools outside BC:

- 99900001 – Alberta
- 99900002 – Saskatchewan
- 99900003 – Manitoba
- 99900004 – Ontario
- 99900005 – Quebec
- 99900006 – New Brunswick
- 99900007 – Nova Scotia
- 99900008 – PEI
- 99900009 – Newfoundland
- 99900010 – Yukon
- 99900011 – NWT
- 99900012 – Nunavut
- 99910001 – USA
- 99910002 – any international high school

For these outside-BC codes only Code and Name is included.

## INSTITUTION (INS)

Information about reporting BC Institutions. INSTITUTION also identifies the institution that offers a credential in collaboration with the Reporting Institution in the STUDENT CREDENTIAL table.

Column	Type	Values	Comments	Version	Purpose
CODE	C(4)	Text	Institution code (see table below).	V2.0	Ministry
NAME	C(50)	Text	The name of the Institution (see table below)	V2.0	Ministry
ACRONYM	C(6)	Text	The extended abbreviation of the institution's name	V2002	Ministry
PSIS_CODE	C(5)	Text	The corresponding PSIS Institution Code (see INSTIT.PDF)	V2000	PSIS
COLLEGE_REGION	C(100)	Date	College region of parent institution	V2023	Ministry
ECONOMIC_REGION	C(100)	Text	Economic region of parent institution	V2023	Ministry
UPDATE_DATE	D	Date	The date the record was added or updated in the common table	V2000	Ministry

CODE	NAME	ACRONYM	PSIS_CODE	COLLEGE_REGION	ECONOMIC_REGION	GEOGRAPHIC_REGION
BT	British Columbia Institute of Technology	BCIT	59023000	British Columbia	Mainland/Southwest	Mainland-Southwest Region (MSW)
CM	Camosun College	CAM	59034000	Camosun	Vancouver Island/Coast	Vancouver Island Region (VIS)
CP	Capilano University	CAPU	59049000	Capilano	Mainland/Southwest	Mainland-Southwest Region (MSW)
CR	Thompson Rivers University	TRU	59048000	Thompson Rivers	Thompson Okanagan	Thompson-Okanagan-Kootenay Region (TOK)
DG	Douglas College	DOUG	59027000	Douglas	Mainland/Southwest	Mainland-Southwest Region (MSW)
EC	Emily Carr University of Art and Design	ECU	59052000	British Columbia	Mainland/Southwest	Mainland-Southwest Region (MSW)
FV	University of the Fraser Valley	UFV	59054000	Fraser Valley	Mainland/Southwest	Mainland-Southwest Region (MSW)
JI	Justice Institute of British Columbia	JIBC	59020000	British Columbia	Mainland/Southwest	Mainland-Southwest Region (MSW)
KW	Kwantlen Polytechnic University	KPU	59053000	Kwantlen	Mainland/Southwest	Mainland-Southwest Region (MSW)
LG	Langara College	LANG	59045000	Vancouver	Mainland/Southwest	Mainland-Southwest Region (MSW)
ML	Vancouver Island University	VIU	59051000	Malaspina	Vancouver Island/Coast	Vancouver Island Region (VIS)
NC	College of New Caledonia	CNC	59026000	New Caledonia	Cariboo	Cariboo-North Region (CNO)
NI	North Island College	NIC	59035000	North Island	Vancouver Island/Coast	Vancouver Island Region (VIS)
NL	Northern Lights College	NLC	59033000	Northern Lights	Northeast	Cariboo-North Region (CNO)
NV	Nicola Valley Institute of Technology	NVIT	59043000	British Columbia	Thompson Okanagan	Thompson-Okanagan-Kootenay Region (TOK)
NW	Coast Mountain College	CMTN	59036000	Northwest	North Coast	Cariboo-North Region (CNO)
OC	Okanagan College	OKAN	59050000	Okanagan	Thompson Okanagan	Thompson-Okanagan-Kootenay Region (TOK)
OK	Okanagan University College	OUC	59030000	Okanagan	Thompson Okanagan	Thompson-Okanagan-Kootenay Region (TOK)
OL	Thompson Rivers University-Open Learning	TRU-OL	59048004	British Columbia	Thompson Okanagan	Thompson-Okanagan-Kootenay Region (TOK)
RK	College of the Rockies	COTR	59038000	Rockies	Kootenay	Thompson-Okanagan-Kootenay Region (TOK)
RR	Royal Roads University	RRU	59005000	British Columbia	Vancouver Island/Coast	Vancouver Island Region (VIS)
SF	Simon Fraser University	SFU	59007000	British Columbia	Mainland/Southwest	Mainland-Southwest Region (MSW)
SL	Selkirk College	SEL	59031000	Selkirk	Kootenay	Thompson-Okanagan-Kootenay Region (TOK)
UB	University of British Columbia	UBC	59001000	British Columbia	Mainland/Southwest	Mainland-Southwest Region (MSW)
UBCO	University of British Columbia-Okanagan	UBCO	59001000	British Columbia	Thompson Okanagan	Thompson-Okanagan-Kootenay Region (TOK)
UN	University of Northern British Columbia	UNBC	59002000	British Columbia	Cariboo	Cariboo-North Region (CNO)
UV	University of Victoria	UVIC	59009000	British Columbia	Vancouver Island/Coast	Vancouver Island Region (VIS)
VC	Vancouver Community College	VCC	59032000	Vancouver	Mainland/Southwest	Mainland-Southwest Region (MSW)

## PROGRAM\_ENTRANCE\_REQUIREMENT (PER)

Information about Program prerequisites, as referenced by PROGRAM.

Column	Type	Values	Comments	Version	Purpose
CODE	C(2)	Text	Program Entrance Requirement code (see table below)	V2.0 Revised V2000	Ministry
DESCRIPTION	C(200)	Text	Program Entrance Requirement description (see table below)	V2.0 Revised V2000	Ministry
UPDATE_DATE	D	Date	The date the record was added or updated in the common table	V2000	Ministry

PROGRAM_ENTRANCE_REQUIREMENT	
CODE	DESCRIPTION
<b>Elementary/Secondary Level</b>	
10	Less than primary
13	High School diploma
14	High School matriculation
18	Some secondary attendance
19	Primary/elementary education
<b>College Level</b>	
21	Registered Apprenticeship
22	Trade/vocational certificate or diploma
23	College post secondary certificate
24	College post secondary diploma
28	Other college level credential
29	Non-professional health certificate (CPR, First Aid, etc.)
<b>Undergraduate Level</b>	
41	Bachelor degree
42	First Professional degree
46	Undergraduate level certificate
47	Undergraduate level diploma
48	Other undergraduate level credential
49	Some undergraduate attendance
<b>Graduate Level</b>	
51	Master's degree
52	Graduate level certificate
53	Graduate level diploma
54	Ph.D.
55	Equivalent earned Doctorate
58	Other graduate level credential
59	Some graduate level
<b>Other</b>	
98	Not Applicable
99	Other (unspecified above)



SCHOOL\_DISTRICT (SD)

Information about School Districts as referenced by HIGH\_SCHOOL.

Column	Type	Values	Comments	Version	Purpose
CODE	N(3)	Text	High School code	V2.0	Ministry
NAME	C(100)	Text	The name of the High School	V2.0	Ministry
CITY	C(50)	Text	The school location	V2.0	Ministry
POSTAL_CODE	C(7)		The school's postal code	V2.0	Ministry
UPDATE_DATE	D	Date	The date the record was added or updated in the common table	V2000	Ministry

Notes

The current list of School Districts codes (as obtained from the Ministry of Education's Web Site).

## STUDENT\_COURSE\_FEE\_TYPE (SCFT)

The fee type associated with a Student Course Registration.

Column	Type	Values	Comments	Version	Purpose
SCFT_CODE	N(3)	Text	The Student Course Fee type code	V2002	Ministry
DESCRIPTION	C(50)	Text	Description of the Student Course Fee Type	V2002	Ministry
DEFINITION	C(2000)	Text	Definition of Student Course Fee Type	V2002	Ministry
BASE_LEVERAGED_INDICATOR	C(1)		Indicator, specifying whether the fee type is base or leveraged activity	V2002	Ministry
PSIS_CODE	N(2)		The PSIS Student Course Fee Type code associated with this code	V2002	PSIS
PSIS_DESCRIPTION	C(7)		Description of the PSIS Student Course Fee Type code	V2002	PSIS
UPDATE_DATE	D	Date	The date the record was added or updated in the common table	V2002	Ministry

SCFT_Code	Description	Definition	Base/Leveraged Indicator	PSIS_Code	PSIS_Description
001	Standard In-Province Domestic (Base)	Tuition fee set at a rate to which the institution expects a parallel subsidy from PSFS or STBC. This value also includes Tuition free ABE where the rate is set to zero as the institution expects to fully recover the cost of delivery from PSFS.	B	01	Standard in-province domestic fees
101	Domestic Contract Training (Base)	No individual fee was charged to the student but activity was delivered to a group of students to which the institution expects a parallel subsidy from PSFS or STBC. An example of this could be Apprenticeship activity.	B	01	Standard in-province domestic fees
002	Standard Out-Of-Province Domestic (Base)	Tuition fee (for a student from outside of BC) set at a rate to which the institution expects a parallel subsidy from PSFS or STBC. This value also includes Tuition free ABE where the rate is set to zero as the institution expects to fully recover the cost of delivery from PSFS. NOTE: At this time, BC does not charge out of province students differential fees	B	02	Standard out-of-province domestic fees
003	International	Tuition fee set at a rate to which the institution expects to cover the costs of instruction for delivering activity to international students. This category generally applies to individuals on student visas who are paying a differential fee for their course.	L	03	Standard international fees
004	Cost Recovery	Tuition fee set at a rate to which the institution expects to cover the costs of instruction for delivering activity. The student or their sponsor pays the tuition fee.	L	04	Mainly full cost recovery fees
104	Cost Recovery Contract Training	No individual fee was charged to the student, but activity was delivered to a group of students where the institution was reimbursed for the cost of delivery by means of a contractual agreement. Depending on the contract deliverables, these students may or may not have individual course enrolment records at your institution.	L	04	Mainly full cost recovery fees
204	Cost Recovery – Government	Tuition fee set at a rate to which the institution expects a parallel subsidy from a Government Ministry or Agency (other than PSFS or STBC). This value also includes Tuition free courses where the rate is set to zero as the institution expects to fully recover the cost of delivery from a Government Ministry or Agency (other than PSFS or STBC).	L	04	Mainly full cost recovery fees
005	Waived Domestic (Base) – Senior Citizen Fees	Tuition fee (for a Senior Citizen) is waived by an institution that was set at a rate to which the institution expects a parallel subsidy from PSFS or STBC. This represents an institutional decision to forgo domestic tuition revenue for activity that would have otherwise received Domestic tuition. This does not represent a case such as Tuition free ABE activity where PSFS has made the decision that the institution will be fully reimbursed for the cost of delivery.	B	05	Senior citizen fees

SCFT_Code	Description	Definition	Base/Leveraged Indicator	PSIS_Code	PSIS_Description
105	Waived Cost Recovery – Senior Citizen Fees	The entire cost of delivery is incurred by the institution with no expectation of recovery from any external source.	L	05	Senior citizen fees
006	Waived Domestic (Base) – Staff Fees	Tuition fee (for Staff) is waived by an institution that was set at a rate to which the institution expects a parallel subsidy from PSFS or STBC. This represents an institutional decision to forgo domestic tuition revenue for activity that would have otherwise received Domestic tuition. This does not represent a case such as Tuition free ABE activity where PSFS has made the decision that the institution will be fully reimbursed for the cost of delivery.	B	06	Staff fees
106	Waived Cost Recovery – Staff Fees	The entire cost of delivery is incurred by the institution with no expectation of recovery from any external source for Staff.	L	06	Staff fees
007	Waived Domestic (Base) – Staff Dependent Fees	Tuition fee (for Staff Dependents) is waived by an institution that was set at a rate to which the institution expects a parallel subsidy from PSFS or STBC. This represents an institutional decision to forgo domestic tuition revenue for activity that would have otherwise received Domestic tuition. This does not represent a case such as Tuition free ABE activity where PSFS has made the decision that the institution will be fully reimbursed for the cost of delivery.	B	07	Staff dependent fees
107	Waived Cost Recovery – Staff Dependent Fees	The entire cost of delivery is incurred by the institution with no expectation of recovery from any external source for Staff Dependents.	L	07	Staff dependent fees
015	Waived Domestic (Base) – Recruitment Package	Tuition fee is waived by an institution (as part of a recruitment package) that was set at a rate to which the institution expects a parallel subsidy from PSFS or STBC. This represents an institutional decision to forgo domestic tuition revenue for activity that would have otherwise received Domestic tuition. This does not represent a case such as Tuition free ABE activity where PSFS has made the decision that the institution will be fully reimbursed for the cost of delivery.	B	15	Fees waived or reduced: recruitment package
115	Waived or Reduced Cost Recovery – Recruitment Package	The entire cost of delivery is incurred by the institution with no expectation of recovery from any external source as part of a recruitment package.	L	15	Fees waived or reduced: recruitment package
020	Waived Domestic (Base) – Other	Tuition fee (for reasons other than defined by codes 005, 006, 007, 015) is waived by an institution that was set at a rate to which the institution expects a parallel subsidy from PSFS or STBC. This represents an institutional decision to forgo domestic tuition revenue for activity that would have otherwise received Domestic tuition. This does not represent a case such as Tuition free ABE activity where PSFS has made the decision that the institution will be fully reimbursed for the cost of delivery.	B	20	Fees waived or reduced: other reason
120	Waived Cost Recovery – Other	The entire cost of delivery is incurred by the institution with no expectation of recovery from any external source (for reasons other than defined by codes 105, 106, 107, 115)	L	20	Fees waived or reduced: other reason
099	Other (not one of the above)	Institution is unable to determine the specific type of fee charged to student for this course registration.	L	99	Other (not one of the above)

## TRANSFERRING\_INSTITUTION (TINS)

Information about the institution from which a Student has transferred course credit.

Column	Type	Values	Comments	Version	Purpose
CODE	C(5)	Text	PSIS 5-character "Parent" Institution Code	V2000	Ministry
NAME	C(100)	Text	The name of the Institution (see table below)	V2000	Ministry
UPDATE_DATE	D	Date	The date the record was added or updated in the common table	V2000	Ministry

## Notes

In addition to PSIS codes, TINS also contains the following codes:

CODE	NAME
97	Private Canadian School/Trainer
98	Non-Canadian PSI
99	Unknown Institution

## STUDENT PERSONAL INFORMATION

### Statistics Canada – PSIS

Institutions are required to provide Statistics Canada with student personal information, including current student name and address. This information is intentionally not included in the DDEF submission requirements, and institutions must provide this information to Statistics Canada separately. To assist institutions in preparing the required information for submission, the following STUDENT PERSONAL DATA table has been created. Institutions may choose to include this table in their institutional data warehouse.

Institutions may elect to send their STUDENT PERSONAL DATA directly to Statistics Canada or submit the table along with their regular DDEF submissions to the Central Data Warehouse (where it will be forwarded to Statistics Canada on your behalf). If your institution chooses to send the STUDENT PERSONAL DATA table to the Central Data Warehouse, this table will be stored separately from the Data Warehouse data (i.e., will not be linked) and will be deleted once the information has been successfully transmitted to Statistics Canada.

---

**Note: If your institution chooses to submit student personal data directly to Statistics Canada, your institution is required to format the data per the PSIS Student Description (SD) File layout (see PSIS/2000 specifications, available separately).**

---

## STUDENT PERSONAL DATA (SPD) – Table 1 of 2

Personal information about individuals who have either:

- Applied to (or have been assigned to) at least one Program at the reporting institution, where that program application was either accepted, rejected, deferred or waitlisted, or;
- Have been awarded a credential at the reporting institution.

Column	Type	Values	Comments	Version	Purpose
<u>INSTITUTION</u>	INS_CODE	C(4)	Foreign Key	A code describing the Institution reporting this student information.	V2.0 Revised V2000 Ministry PSIS
ID_NUMBER	N(12)	Valid Number	The unique student ID as used by the institution operational system to identify the student (same number as reported in STUDENT).  The ID number used in this field must match the ID number provided to the Ministry for PEN validation for this student.	V2.0 Revised V2000 Ministry PSIS - SD4000	
FIRST_NAME	C(40)	Text, NULL	The student's first (given) name.	PSIS SD4040	
MIDDLE_NAME	C(40)	Text, NULL	The middle name(s) and/or initials of the student.  If your institution stores first name and middle name(s)/initials together as one field, enter both in the previous element and leave this element NULL.	PSIS SD4041	
SURNAME	C(40)	Text, NULL	The student's surname (last name)	PSIS SD4042	
PREV_SURNAME	C(40)	Text, NULL	The student's previous surname; e.g. name prior to marriage. If the institution stores more than one previous surname report the most recent only.	PSIS SD4050	
SIN	N(9)	Valid SIN, NULL	The student's Social Insurance Number.	V2.0 PSIS SD4020	
CURR_TEL_NUMBER	C(20)	Text, NULL	The student's telephone number while enrolled in the program or course(s). Include the area code	PSIS SD4080	
CURR_EMAIL_ADDRESS	C(80)	Text, NULL	The student's e-mail address while enrolled in the program or course(s).	PSIS SD4090	
PERM_ADDR_LINE_1	C(55)	Text, NULL	Line 1 of the permanent address reported by the student on their application for admission or the most appropriate address maintained by the institution for follow-up surveys of students after graduation. Ensure that city/town, county, province, country and postal or zip code are reported in elements provided, and not included in this element or the subsequent address lines.	PSIS SD4100	
PERM_ADDR_LINE_2	C(55)	Text, NULL	If applicable, line 2 of the permanent address. Lines 1 and 2 should contain all the address information up to but NOT including the city/ town.	PSIS SD4101	
PERM_ADDR_LINE_3	C(30)	Text, NULL	If applicable, line 3 of the permanent address.	PSIS SD4102	

## STUDENT PERSONAL DATA (SPD) – Table 2 of 2

Personal information about individuals who have either:

- Applied to (or have been assigned to) at least one Program at the reporting institution, where that program application was either accepted, rejected, deferred or waitlisted, or;
- Have been awarded a credential at the reporting institution.

PERM_ADDR_LINE_4	C(30)	Text, NULL	If applicable, line 4 of the permanent address.		PSIS SD4103
PERM_ADDR_LINE_5	C(30)	Text, NULL	If applicable, line 5 of the permanent address.		PSIS SD4104
PERM_ADDR_LINE_CITY	C(35)	Text, NULL	City or town of the student's permanent address		PSIS SD4110
PERM_ADDR_LINE_COUNTY	C(4)	Statistics Canada's 4-digit county codes, NULL	County of the student's permanent address. Assign 9898 (Not applicable) for addresses outside Canada.		PSIS SD4120
PERM_ADDR_LINE_PROVINCE	C(2)	EDI 2-character province/state codes, NULL	Province or state of the permanent address. Assign ZY (Not applicable) for addresses outside Canada and the U.S.		PSIS SD4130
PERM_ADDR_LINE_COUNTRY	C(5)	Statistics Canada's 5-digit country codes, NULL	Country of the permanent address.		PSIS SD4150
PERM_ADDR_LINE_POSTAL_CODE	C(10)	Text, NULL	Postal or zip code of the permanent address		PSIS SD4160
PERM_ADDR_LINE_TEL_NUMBER	C(20)	Text, NULL	Telephone number at the permanent address. Include the area code.		PSIS SD4180
SENSITIVE_RECORD_INDICATOR	C(1)	1 - Yes, sensitive record 2 - No	Identifies students who must be excluded from Statistics Canada's mail or telephone surveys. Report "Yes" only for deceased students or students who might be endangered by being included in a follow-up survey, such as students who are under the witness protection program. If you do not carry this information, assign "2" (No).		PSIS SD4200
CREATE_DATE	D	System Date	The date the record is extracted from the source registration system, or the system date on the day this record is inserted or updated. Used for system maintenance purposes.	Added V2002	Institution