

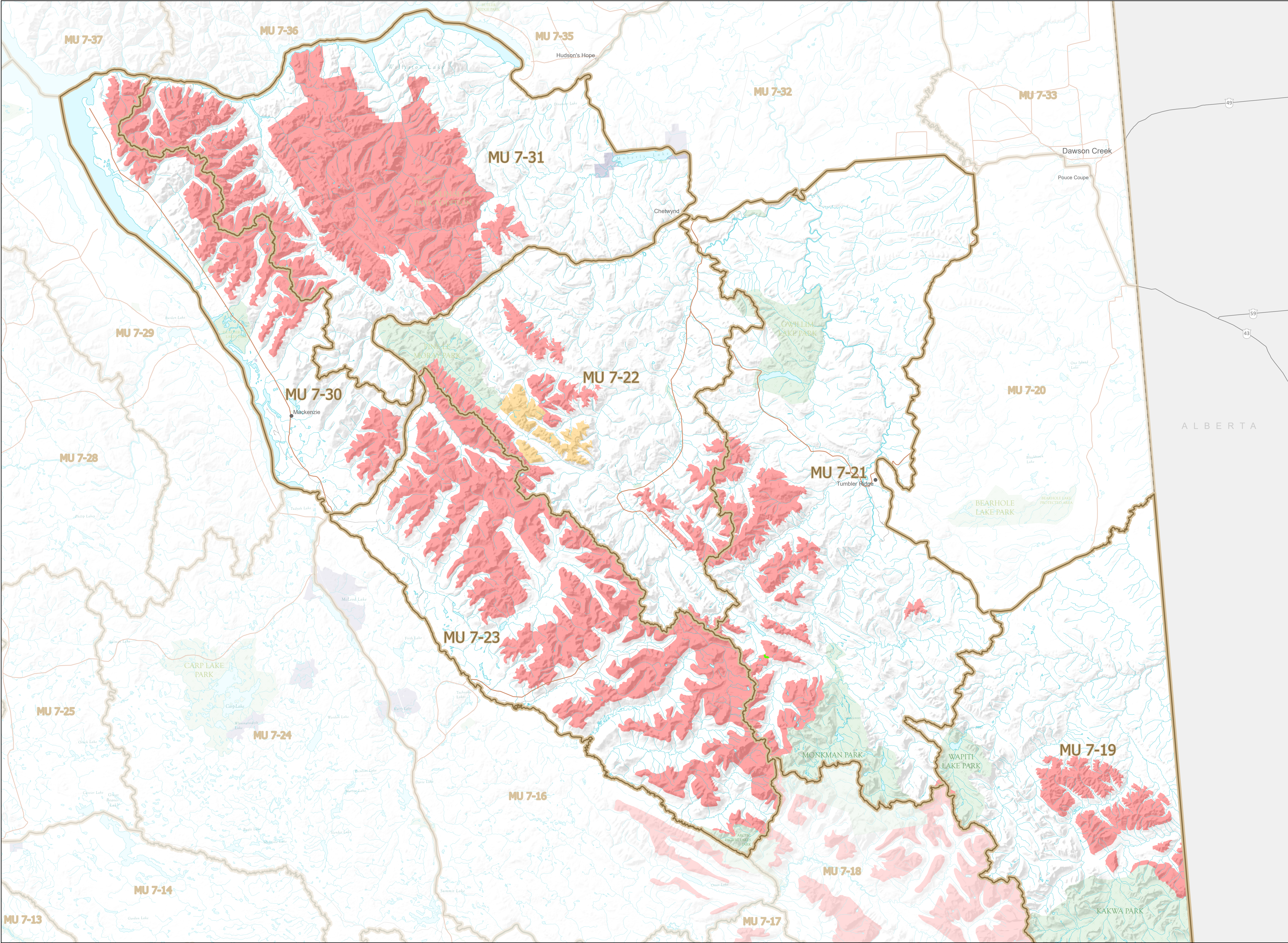
W I L D L I F E A C T
S N O W M O B I L E
C L O S U R E S

Map No. 5-6/23

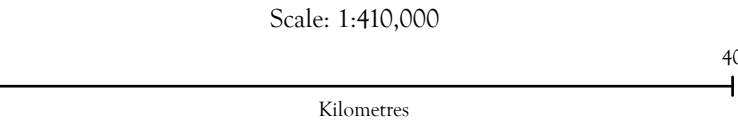
Northern Rockies

Effective year round, in those portions of M.U.s 7-19,
7-21, 7-22, 7-23, 7-30, and 7-31.

- Trail open year round
- Closed Year Round
- Seasonal Closure Jan 15 to Sept 30
- Wildlife Management Unit
- Indian Reserve
- Provincial Park / Protected Area / Ecological Reserve



This map is a georeferenced PDF that can be imported into mobile hardware such as a
smartphone or tablet for viewing in third party applications.



Intended plot size for this map is 34x22 inches

Produced for: Wildlife and Habitat Branch
Produced by: GeoBC on 2023-08-02

