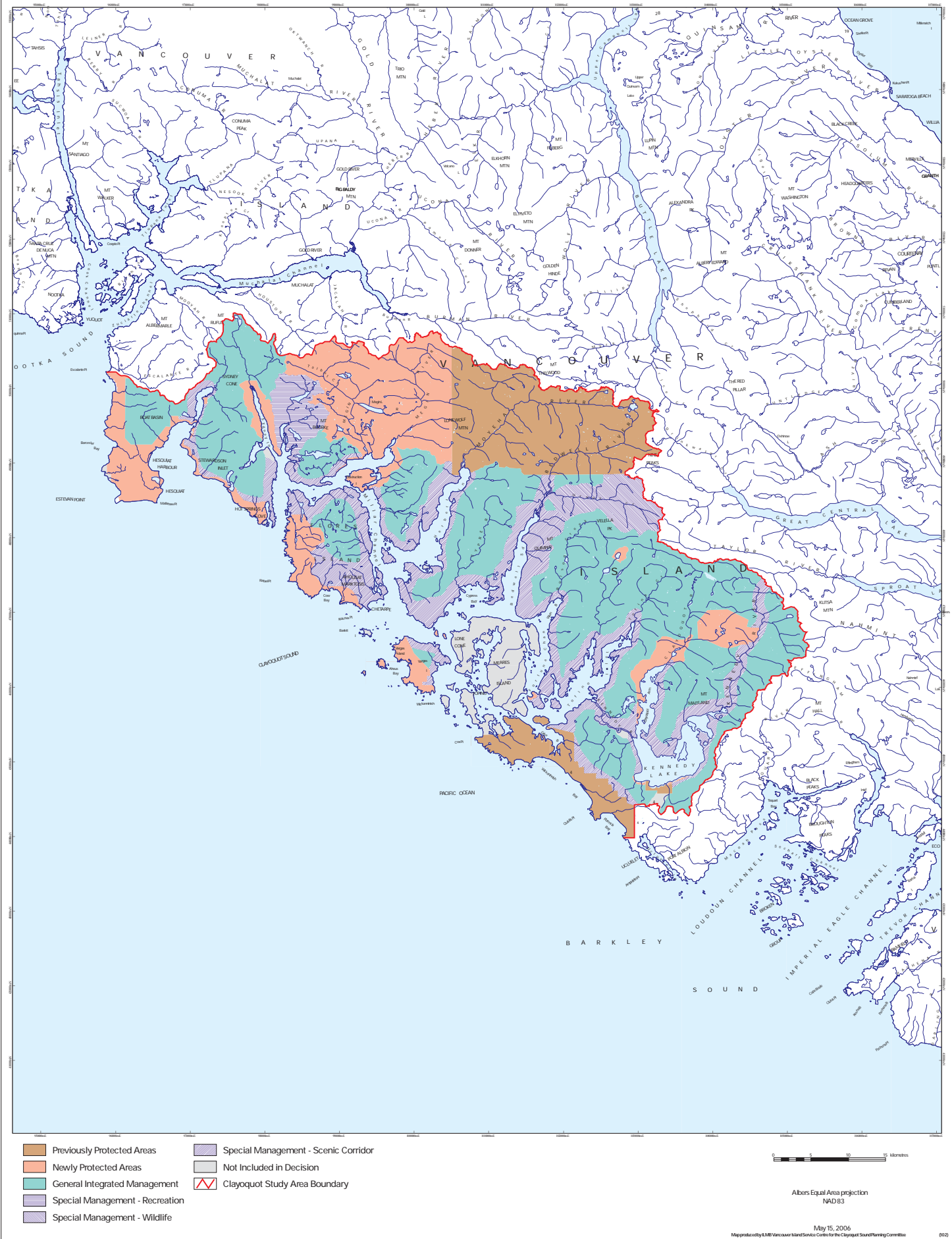


## List of Maps

Map 1	Clayoquot Sound Land Use Decision
Map 2	Clayoquot River Planning Unit – Clayoquot Sound
Map 3	Clayoquot River Planning Unit – Topographic Relief
Map 4	Clayoquot River Planning Unit – Biogeoclimatic Ecosystem Classification (BEC)
Map 5	Clayoquot River Planning Unit – Forest Age Distribution
Map 6	Clayoquot River Planning Unit – Land Status
Map 7	Clayoquot River Planning Unit – Hydroriparian Reserves
Map 8	Clayoquot River Planning Unit – Terrain Stability Reserves
Map 9	Clayoquot River Planning Unit – Sensitive Soils Reserves
Map 10	Clayoquot River Planning Unit – Reserves for Red- and Blue-listed Plant Communities
Map 11	Clayoquot River Planning Unit – Marbled Murrelet Reserves
Map 12	Clayoquot River Planning Unit – Current Old Forest and Forest-interior Old Forest
Map 13	Clayoquot River Planning Unit – Forest-interior Old Forest within Reserve Network
Map 14	Clayoquot River Planning Unit – Reserves added for Ecosystem Representation
Map 15	Clayoquot River Planning Unit – Tla-o-qui-aht First Nations Culturally Significant Areas
Map 16	Clayoquot River Planning Unit – Scenic Management Classes
Map 17	Clayoquot River Planning Unit – Reserves for Recreation/Tourism Values
Map 18	Clayoquot River Planning Unit – Reserve Network
Map 19	Clayoquot River Planning Unit – Scenic Management Classes and Reserve Network
Map 20	Clayoquot River Planning Unit – Reserves and Harvestable Areas
Map 21	Clayoquot River Planning Unit – Watershed Rate of Cut Limits

# Clayoquot Sound Land Use Decision (1993)



# Clayoquot Sound



- Clayoquot Sound Study Area
- Planning Unit
- Clayoquot Study Area Boundary

0 5 10 15 Kilometers

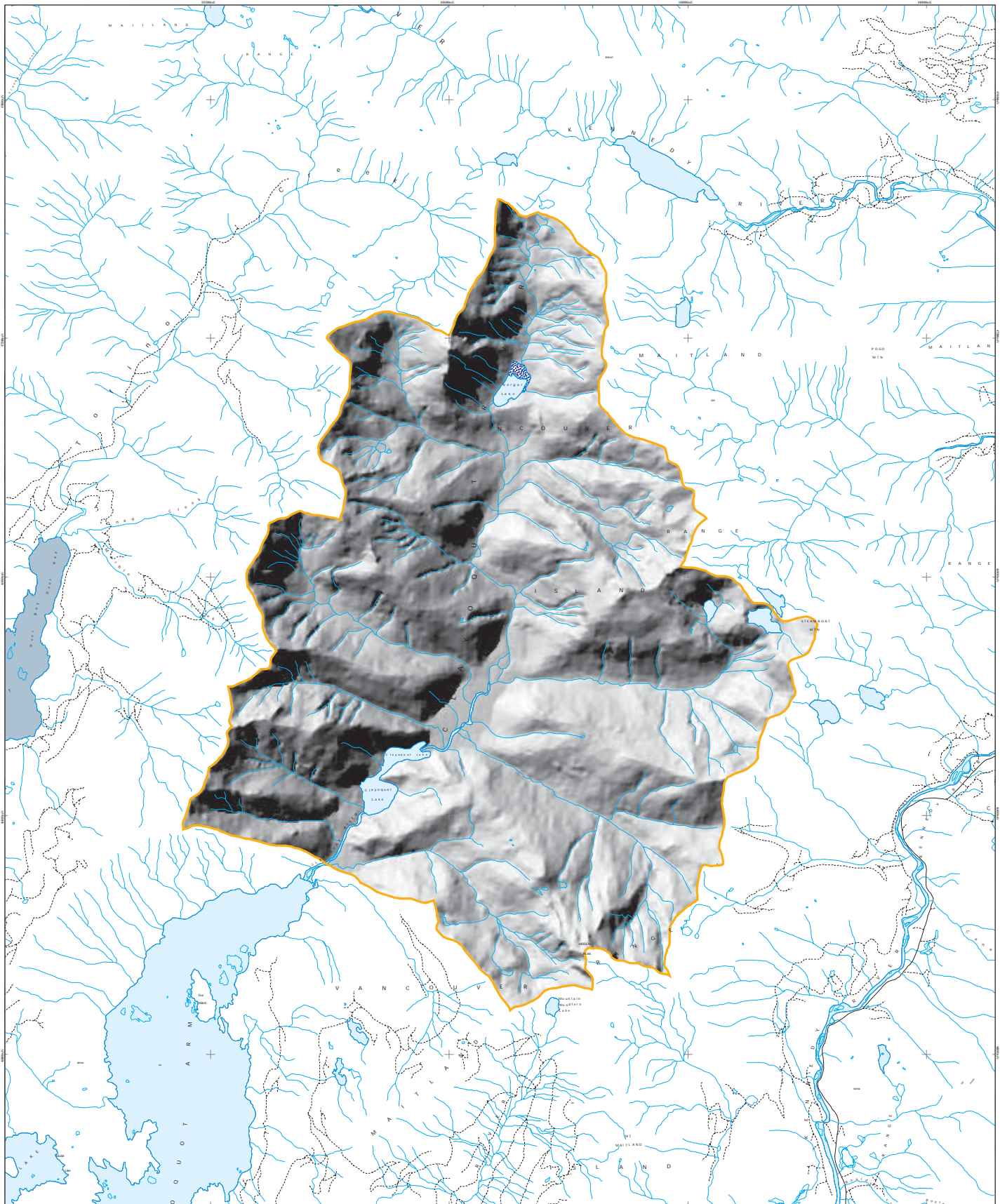
Albers Equal Area projection  
NAD83

May 15, 2006

Map produced by ERM Vancouver Island Service Centre for the Clayoquot Sound Planning Committee



# Clayoquot River Planning Unit Topographic Relief

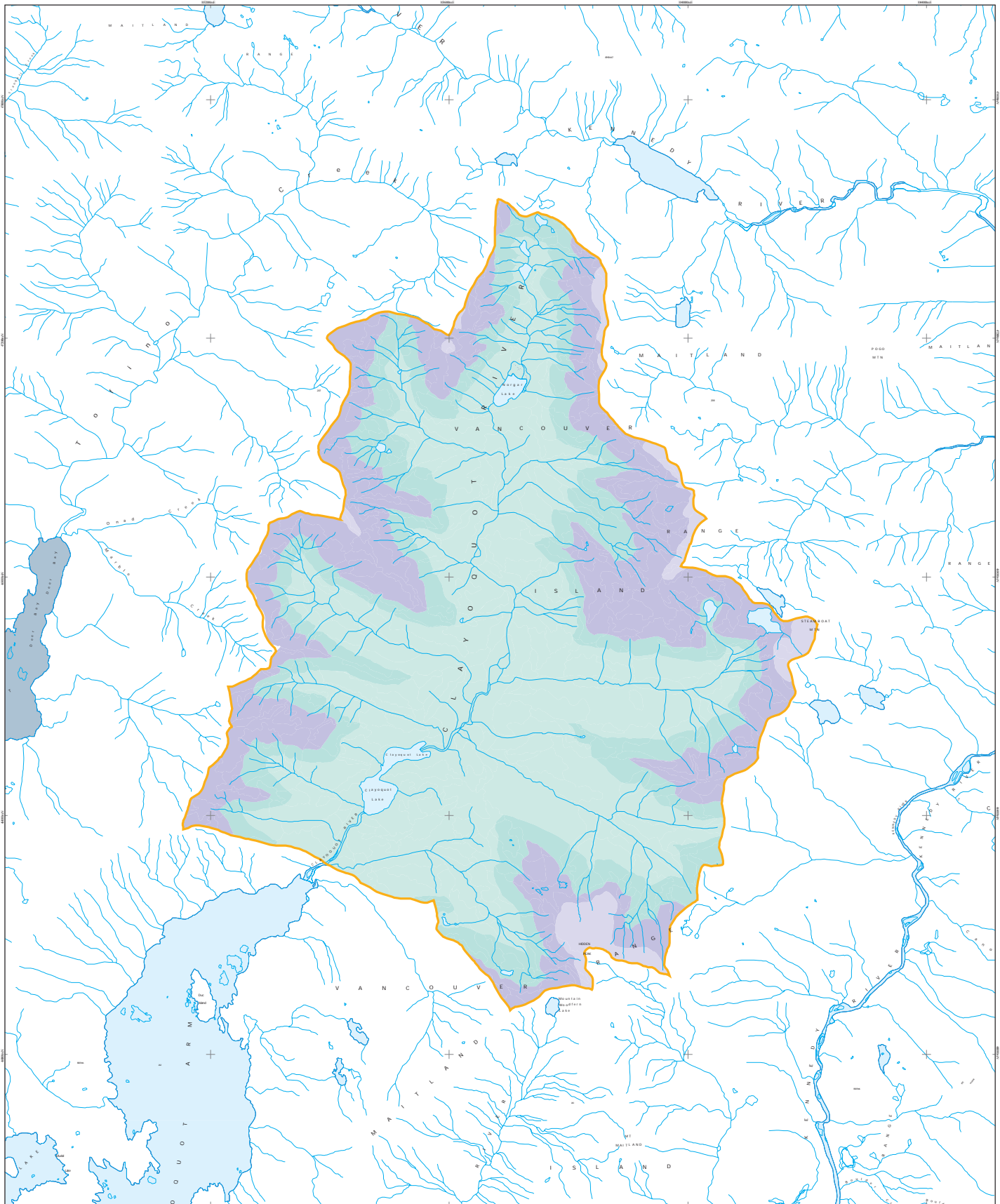


- TRIM Streams
- Planning Unit Boundary
- Paved Road
- Swamp/Marsh
- Gravel Road
- Trail
- Bridge

0 1 2 Kilometers

Albers Equal Area projection  
NAD83

# Clayoquot River Planning Unit Biogeoclimatic Ecosystem Classification (BEC)



- CWHvh1
- CWHvm1
- CWHvm2
- MHmml
- MHmmp1
- AT
- TRIM streams
- Planning Unit Boundary

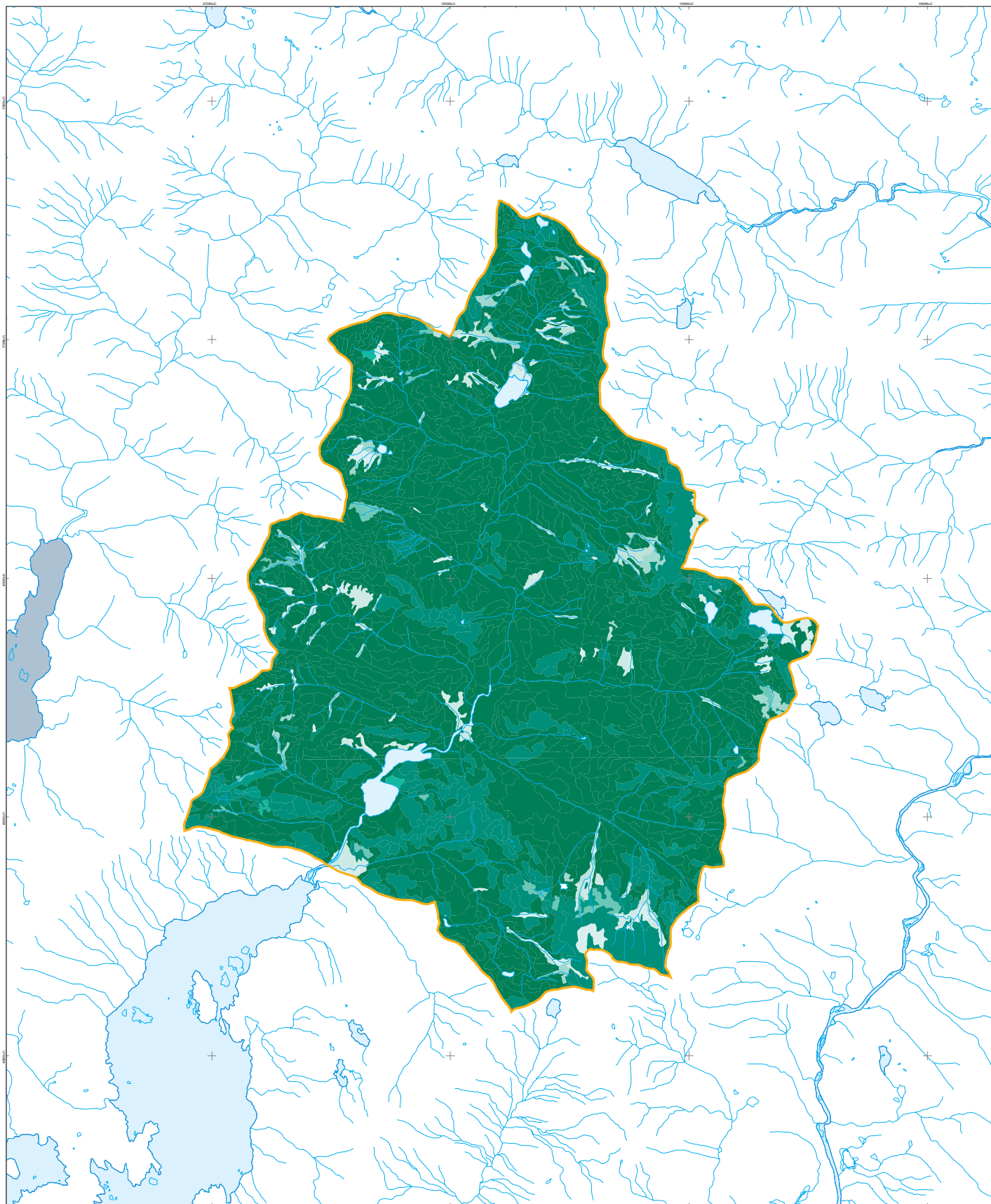
0 1 2 Kilometers

Albers Equal Area projection  
NAD83

May 15, 2006

Map produced by ERM Vancouver Island Service Centre for the Clayoquot Sound Planning Committee

# Clayoquot River Planning Unit Forest Age Distribution



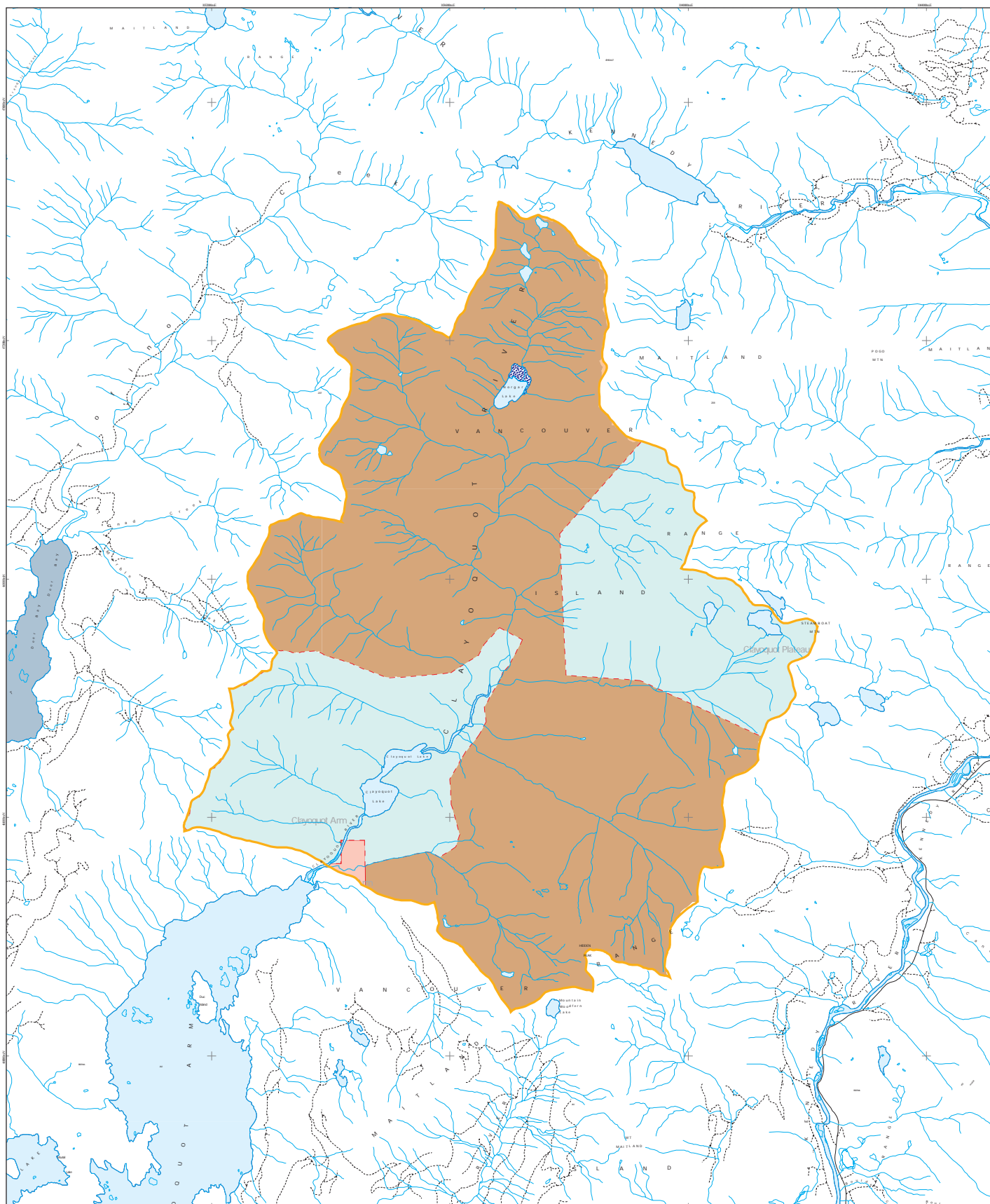
- |                              |                               |                        |
|------------------------------|-------------------------------|------------------------|
| Age Class 1 (1 - 20 years)   | Age Class 6 (101 - 120 years) | Planning Unit Boundary |
| Age Class 2 (21 - 40 years)  | Age Class 7 (121 - 140 years) |                        |
| Age Class 3 (41 - 60 years)  | Age Class 8 (141 - 250 years) |                        |
| Age Class 4 (61 - 80 years)  | Age Class 9 (251+ years)      |                        |
| Age Class 5 (81 - 100 years) | TRIM streams                  |                        |

0 1 2 Kilometers

Albers Equal Area projection  
NAD 83



# Clayoquot River Planning Unit Land Status



- |                 |                      |              |                        |
|-----------------|----------------------|--------------|------------------------|
| TFL 44 Western  | Arrowsmith TSA       | Swamp/Marsh  | Bridge                 |
| TFL 54 Interior | Private Land         | TRIM streams | Planning Unit Boundary |
| TFL 57 Isaak    | Indian Reserves      | Paved Road   |                        |
| Woodlots        | Parks                | Gravel Road  |                        |
| Timber Licences | Community Watersheds | Trail        |                        |

Data Sources: Parks (Protected Areas)  
Indian Reserves  
Private Land  
Community Watersheds  
Woodlots

Land Use Coordination Office  
Surveyor General Branch (1995)  
Surveyor General Branch (1995)  
Ministry of Sustainable Resource Management  
Ministry of Forests

Warning: The data depicted on this map was compiled from different sources and base mapping. Boundaries will not align precisely. Indian Reserves and Private Land data was compiled at a scale of 1:250,000. Private land data does not include areas less than 16 hectares in size. Woodlot locations are not exact.

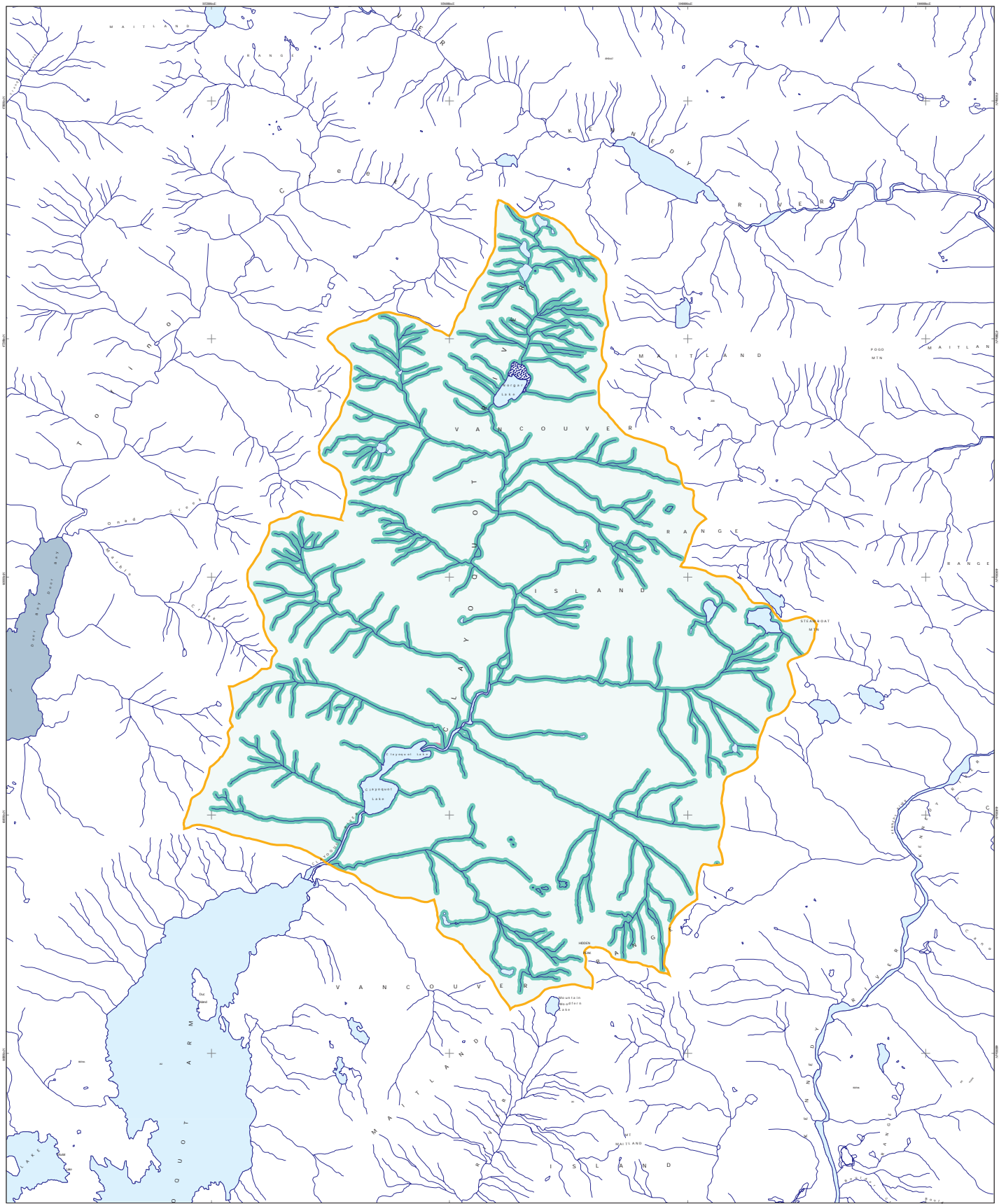
0 1 2 Kilometers

Albers Equal Area projection  
NAD 83

May 15, 2006

Map produced by ERM Vancouver Island Service Centre for the Clayoquot Sound Planning Committee

# Clayoquot River Planning Unit Hydroriparian Reserves



Hydroriparian reserves Planning Unit Boundary

Wetlands

Floodplains

Swamp/Marsh

TRIM streams

0 1 2 Kilometers

Albers Equal Area projection  
NAD83

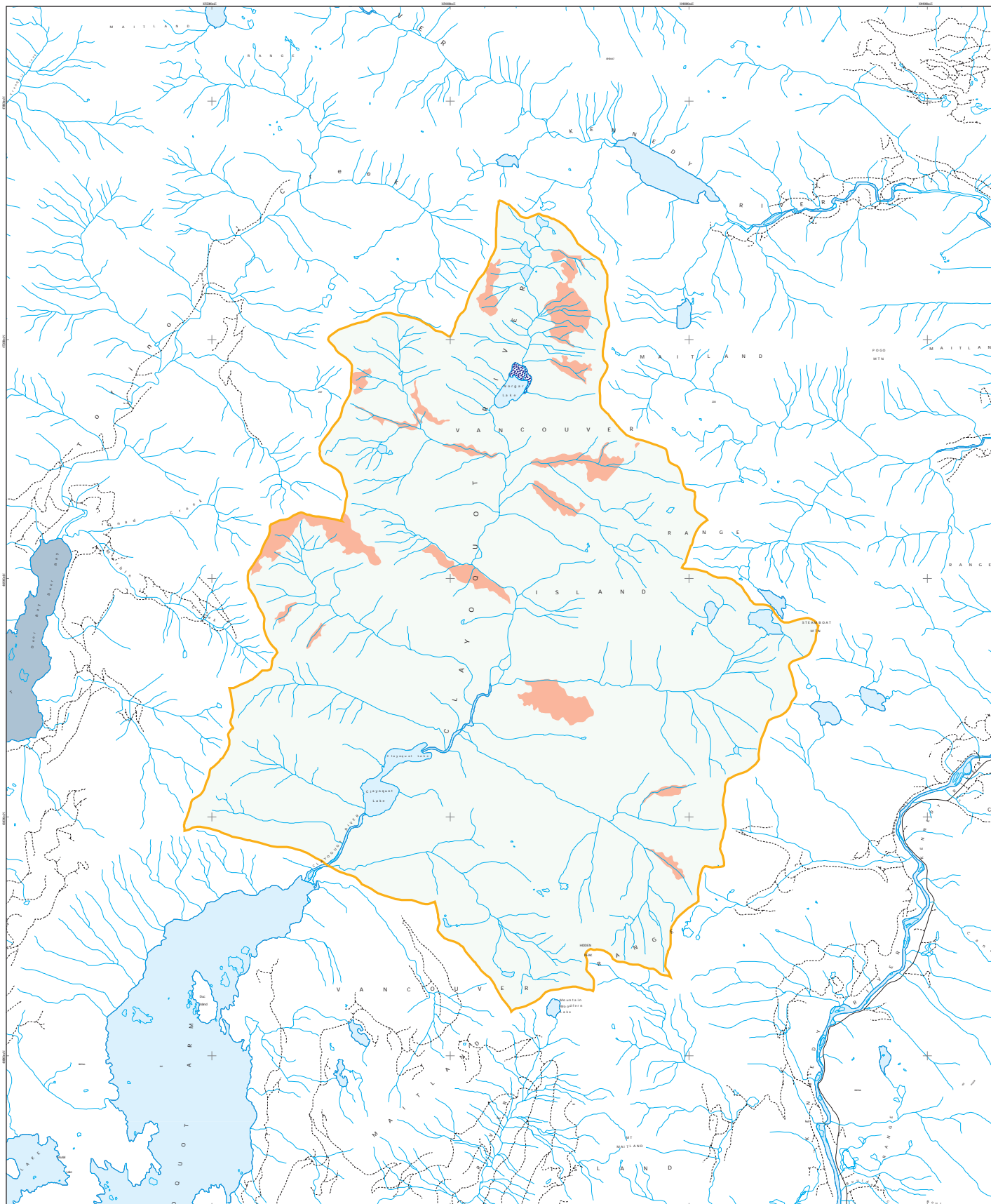
May 15, 2006

Map produced by ERM Vancouver Island Service Centre for the Clayoquot Sound Planning Committee

010



# Clayoquot River Planning Unit Reserves for Terrain Stability



- Terrain Stability Reserves
- Swamp/Marsh
- TRIM streams
- Paved Road
- Gravel Road
- Trail
- Bridge
- Planning Unit Boundary

0 1 2 Kilometers

Albers Equal Area projection  
NAD83

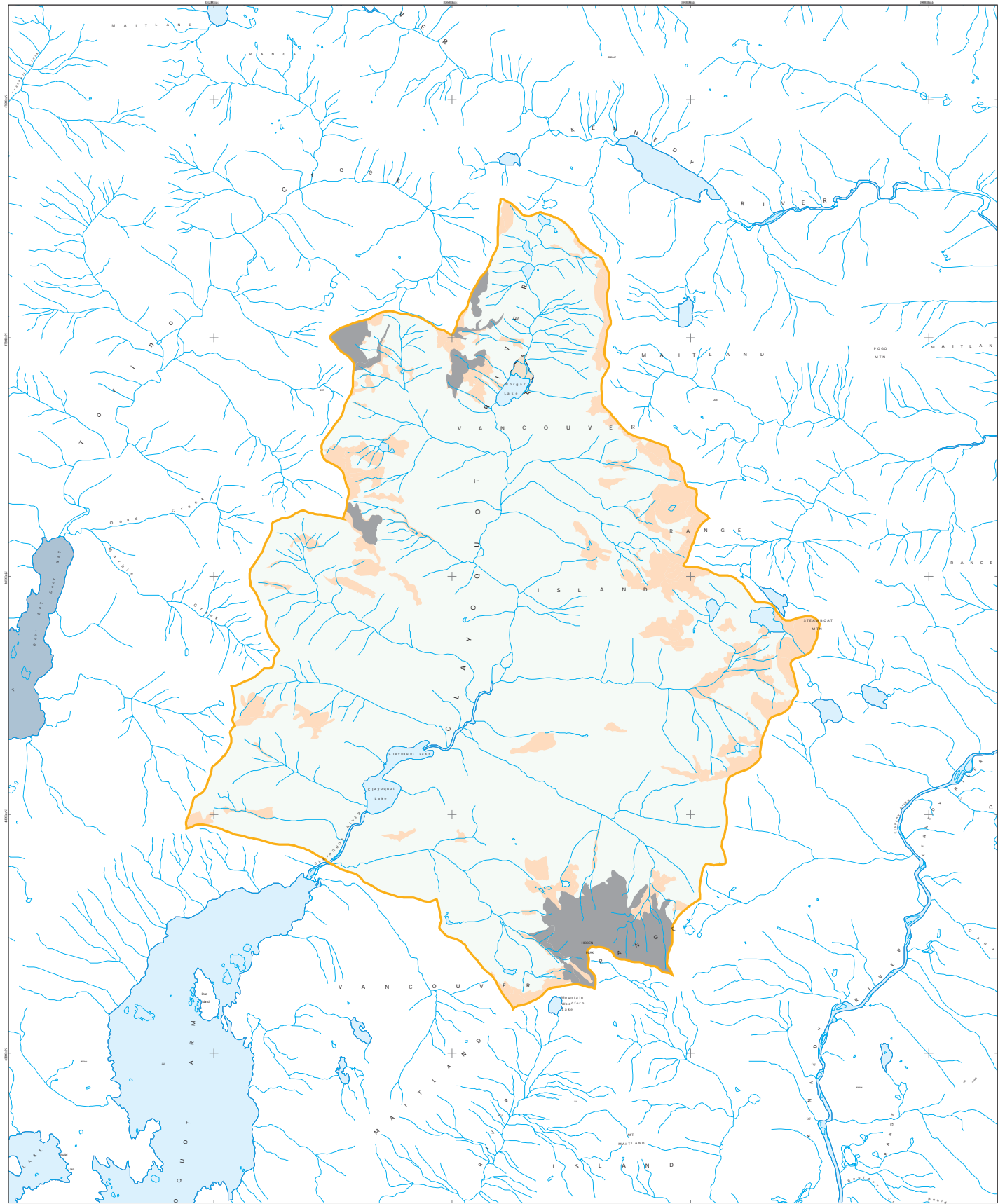
May 15, 2006

Map produced by ERM Vancouver Island Service Centre for the Clayoquot Sound Planning Committee

Inventory Done in Accordance with RIC Standards

Terrain Inventory 1996-1998 Madrona Consultants

# Clayoquot River Planning Unit Reserves for Sensitive Soils

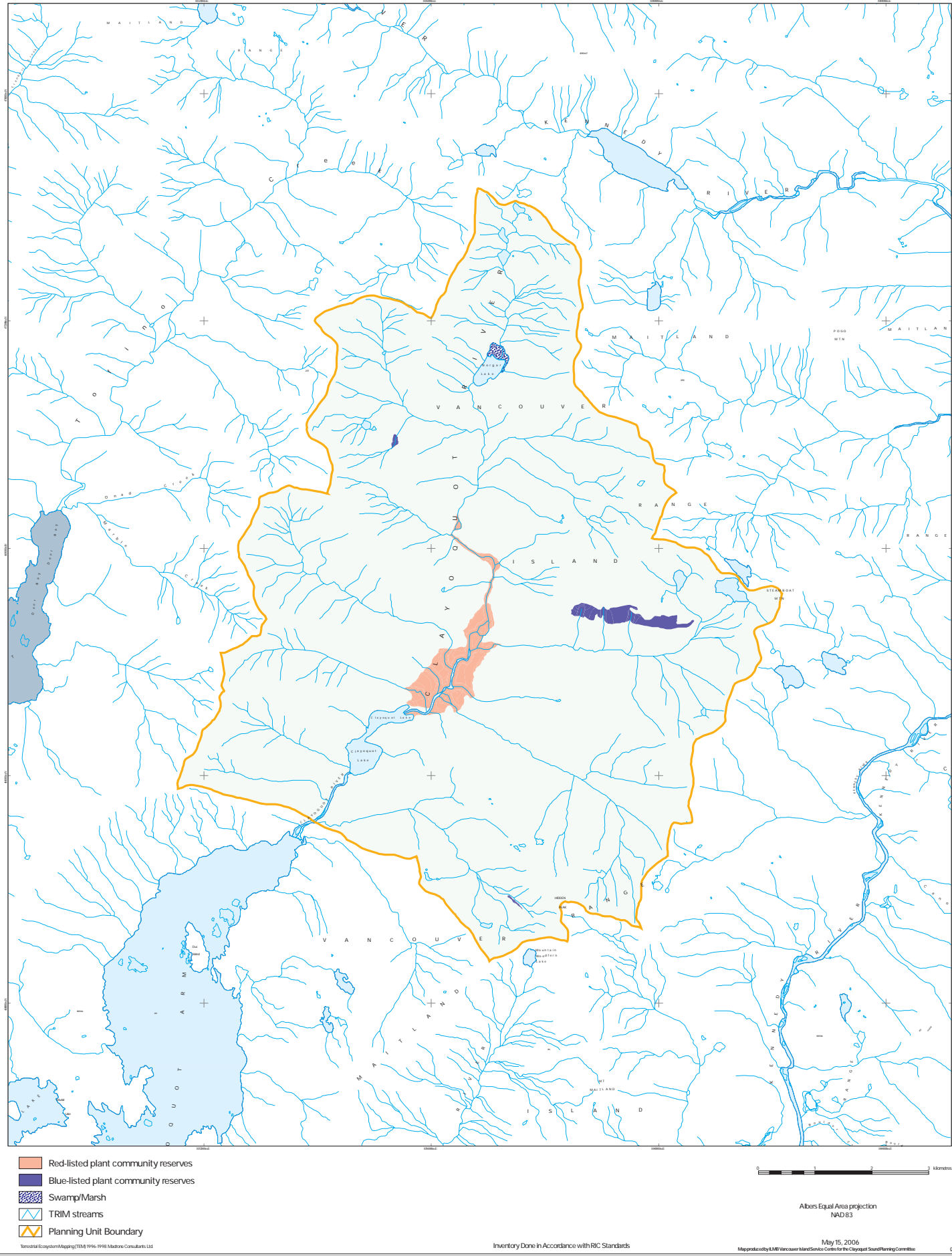


- |  |                        |
|--|------------------------|
| Bedrock Terrain                                  | Poor Growing Site      |
| Shallow Organic Materials                        | Swamp/Marsh            |
| Organic Soil                                     | TRIM streams           |
| Blocky and Bouldery Colluvial Material           | Planning Unit Boundary |
| Active Colluvial Cones or Fans and Alluvial Fans |                        |

0 1 2 Kilometers

Albers Equal Area projection  
NAD83

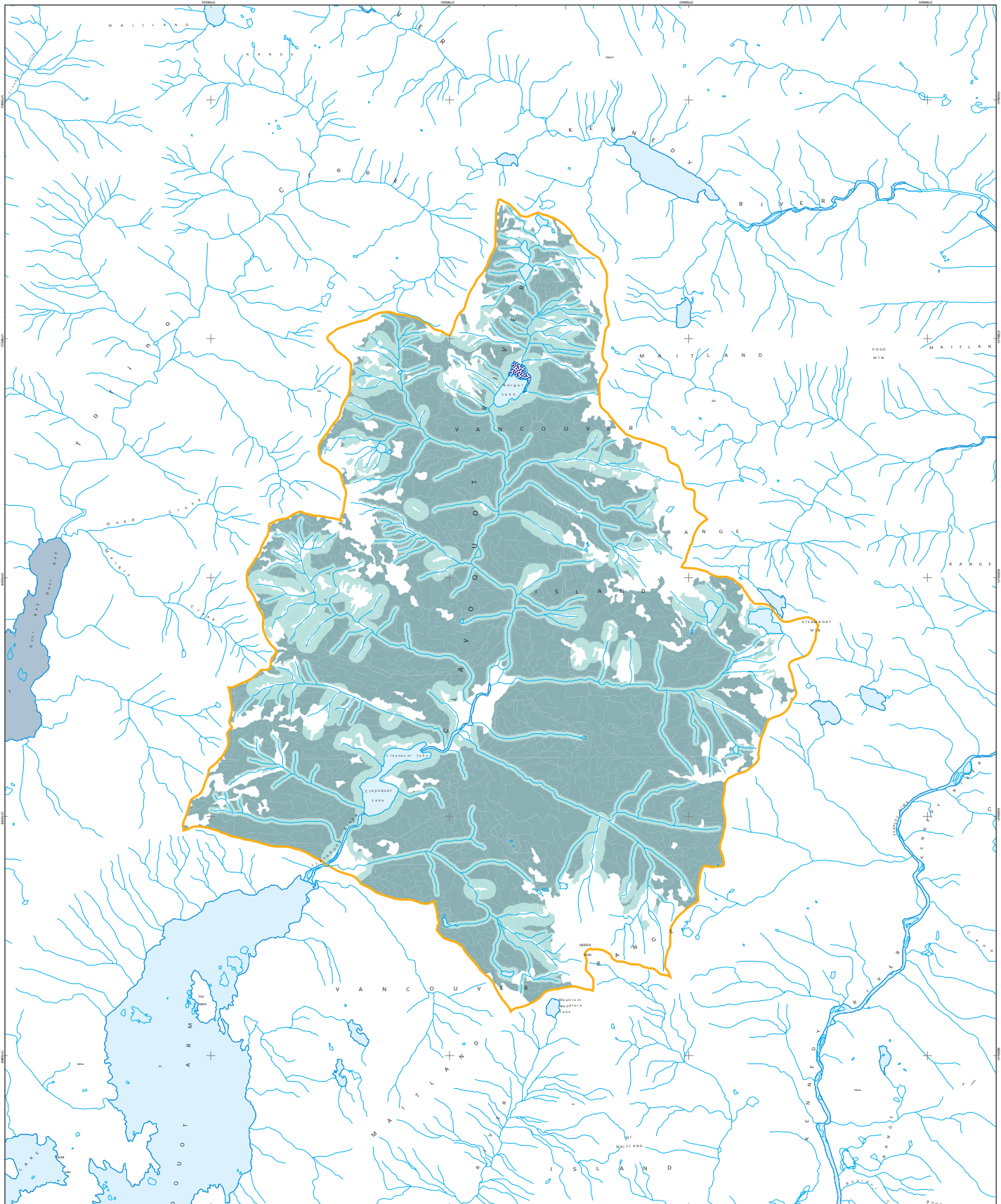
# Clayoquot River Planning Unit Reserves for Red- and Blue-listed Plant Communities







# Clayoquot River Planning Unit Current Old Growth and Interior Old Growth Forest



- Old Growth Forest (age class 8 and 9)
- Interior Old Growth Forest
- Swamp/Marsh
- TRIM streams
- Planning Unit Boundary

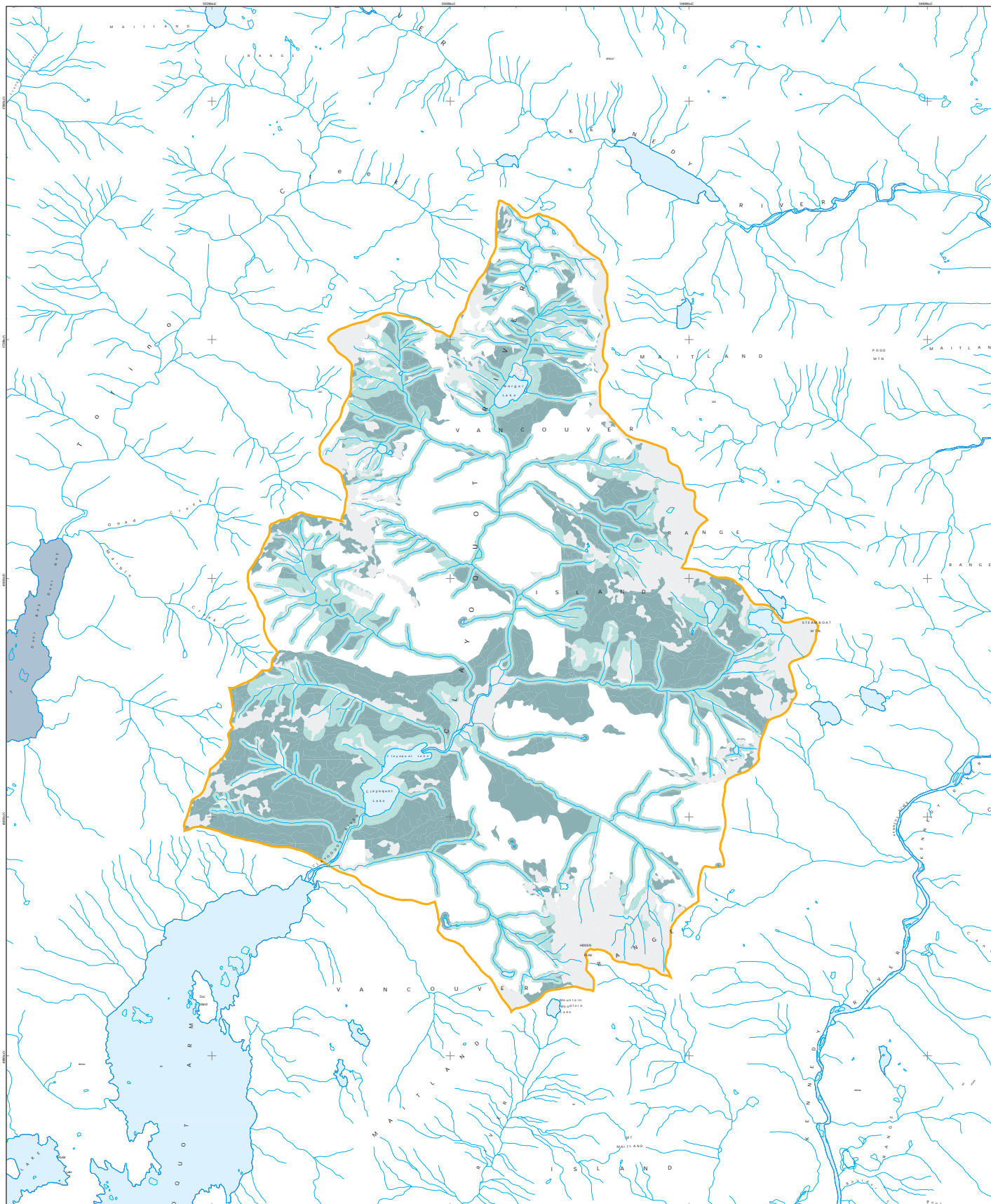
0 1 2 Kilometers

Albers Equal Area projection  
NAD83

May 15, 2006

Map produced by ERM Vancouver Island Service Centre for the Clayoquot Sound Planning Committee

# Clayoquot River Planning Unit Old Growth and Interior Old Growth in Reserve Network



- Old Growth Forest in Reserve Network
- Interior Old Growth Forest in Reserve Network
- Reserve Network
- Swamp/Marsh
- TRIM streams
- Planning Unit Boundary

0 1 2 Kilometers

Albers Equal Area projection  
NAD83

May 15, 2006





Map produced by ERM Vancouver Island Service Centre for the Clayoquot Sound Planning Committee



## Clayoquot River Planning Unit

### Reserves added for Ecosystem Representation



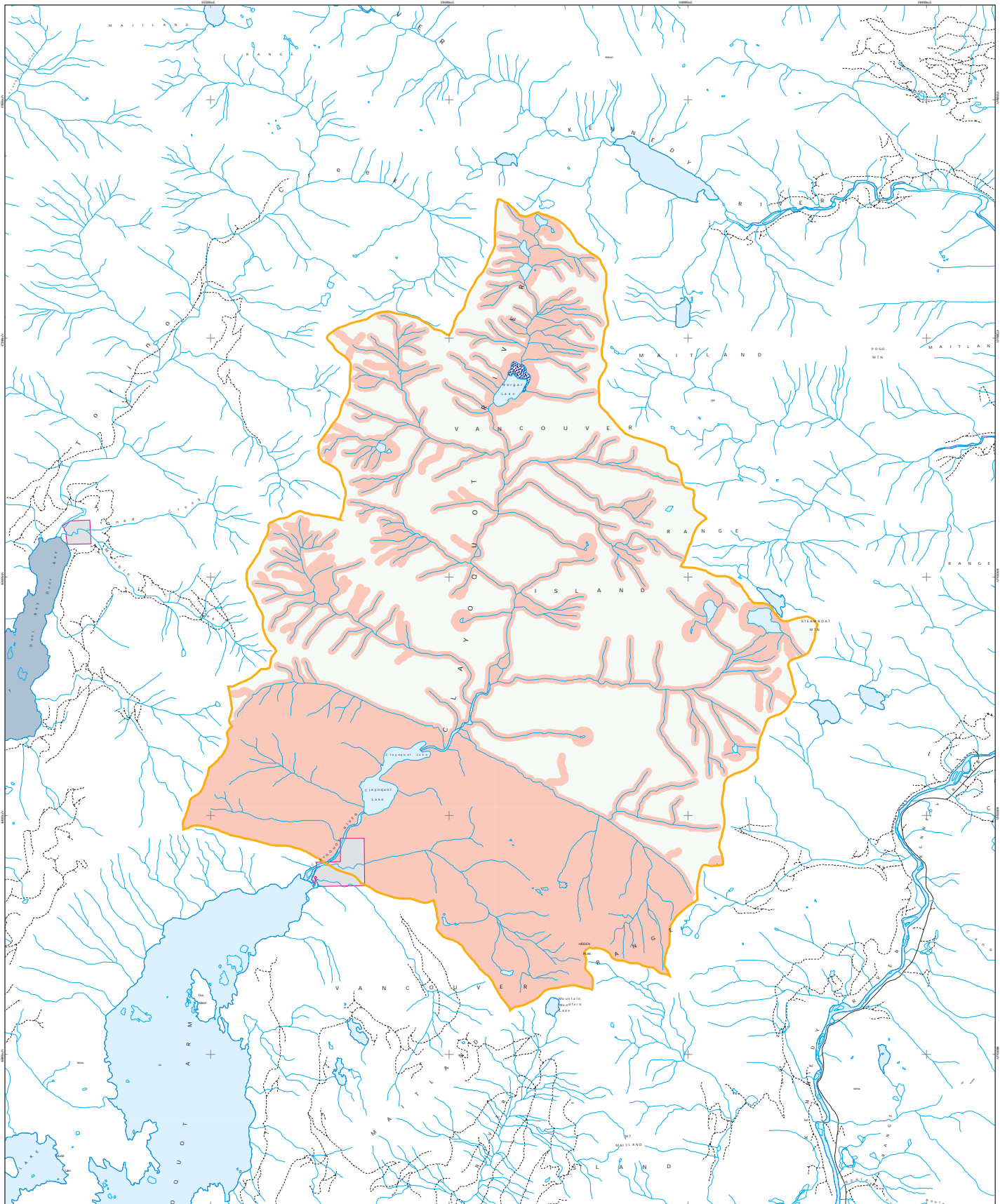
-  Reserves to Complete Ecosystem Representation  
 Reserves for Representative Ecosystems from Other Reserve Criteria  
 TRIM streams  
 Planning Unit Boundary

Albers Equal Area projection  
NAD 83

Terrestrial Ecosystem Mapping (TEM) 1996-1998 Madrone Consultants Ltd

May 15, 2006  
Map produced by LMB Vancouver Island Service Centre for the Clayoquot Sound Planning Committee

# Clayoquot River Planning Unit Culturally Significant Areas - Tla-o-qui-aht First Nation



- |  |                              |  |                        |
|--|------------------------------|--|------------------------|
|  | Culturally Significant Areas |  | Trail                  |
|  | Indian Reserves              |  | Bridge                 |
|  | TRIM Streams                 |  | Planning Unit Boundary |
|  | Paved Road                   |  |                        |
|  | Gravel Road                  |  |                        |

0 1 2 Kilometers

Albers Equal Area projection  
NAD83

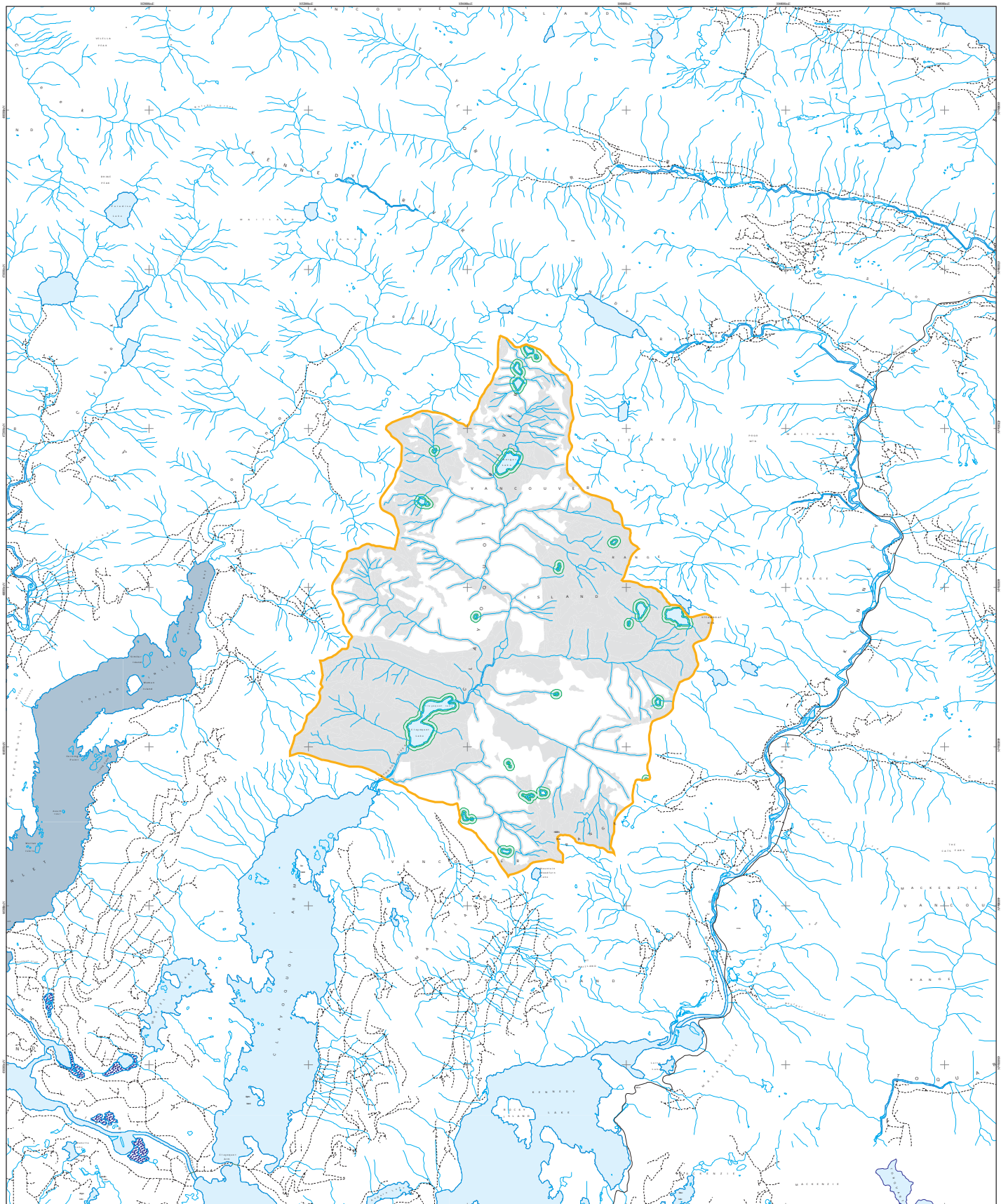
May 15, 2006

Map produced by ERM Vancouver Island Service Centre for the Clayoquot Sound Planning Committee





# Clayoquot River Planning Unit Reserves for Recreation/Tourism Values



- |                          |                        |
|--------------------------|------------------------|
| Reserve                  | Paved Road             |
| Management Zone          | Gravel Road            |
| Existing Reserve Network | Trail                  |
| Recreation Polygons      | Bridge                 |
| TRIM streams             | Planning Unit Boundary |

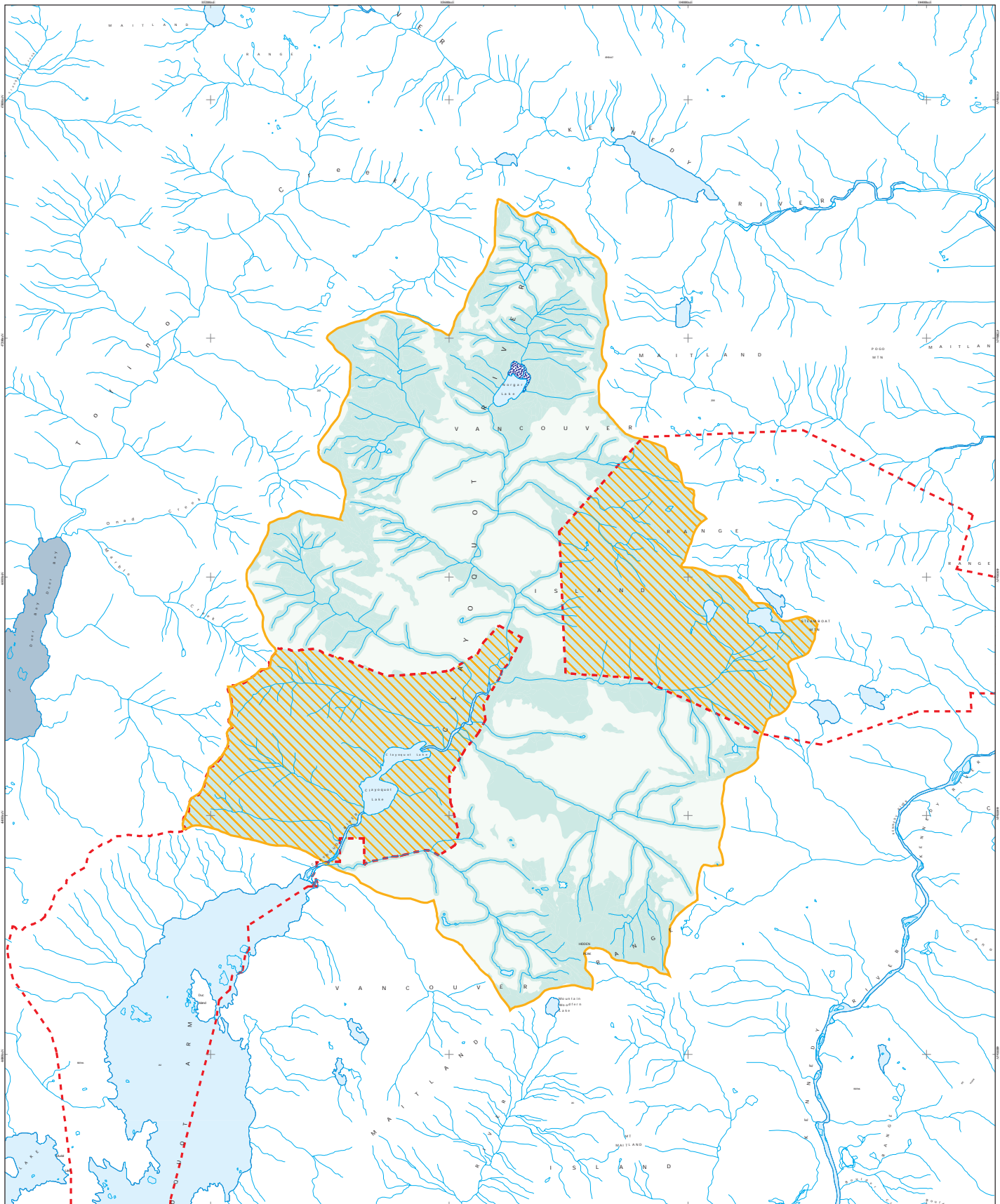
0 1 2 3 4 Kilometres

Albers Equal Area projection  
NAD 83

May 15, 2006

Map produced by ERM Vancouver Island Service Centre for the Clayoquot Sound Planning Committee

# Clayoquot River Planning Unit Reserve Network



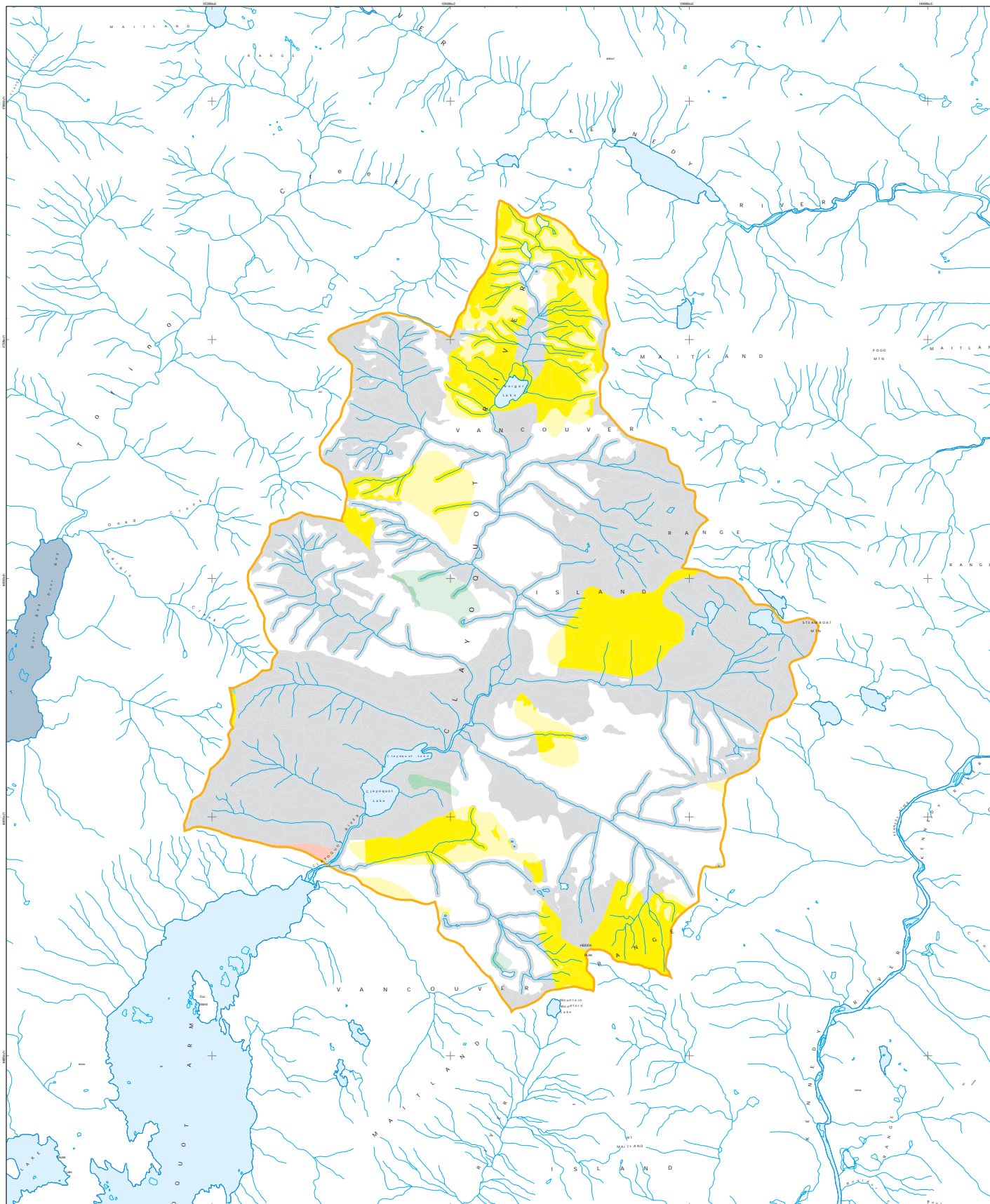
- Reserve Polygons
- Protected Areas
- TRIM streams
- Planning Unit Boundary

Note: Reserves established as per Clayoquot Sound Scientific Panel Recommendations (See Recommendation R7.16 of Report 5)

0 1 2 3 Kilometers

Albers Equal Area projection  
NAD83

# Clayoquot River Planning Unit Scenic Class Objectives and Reserve Network



- |   |  |
|---|--|
| <span style="display: inline-block; width: 15px; height: 10px; background-color: #d9ead3; border: 1px solid black;"></span> Small-scale Alteration              | <span style="display: inline-block; width: 15px; height: 10px; background-color: #f4cccc; border: 1px solid black;"></span> Natural Appearing - in Reserve                     |
| <span style="display: inline-block; width: 15px; height: 10px; background-color: #fff2cc; border: 1px solid black;"></span> Minimal Alteration                  | <span style="display: inline-block; width: 15px; height: 10px; background-color: #cccccc; border: 1px solid black;"></span> Reserve Network outside of Scenic Management Areas |
| <span style="display: inline-block; width: 15px; height: 10px; background-color: #fce4d6; border: 1px solid black;"></span> Natural Appearing                   | <span style="display: inline-block; width: 15px; height: 10px; background-color: #a6c9ec; border: 1px solid black;"></span> TRIM streams                                       |
| <span style="display: inline-block; width: 15px; height: 10px; background-color: #d9ead3; border: 1px solid black;"></span> Small-scale Alteration - in Reserve | <span style="display: inline-block; width: 15px; height: 10px; border: 2px solid orange;"></span> Planning Unit Boundary   |
| <span style="display: inline-block; width: 15px; height: 10px; background-color: #fff2cc; border: 1px solid black;"></span> Minimal Alteration - in Reserve     |  |

0 1 2 Kilometers

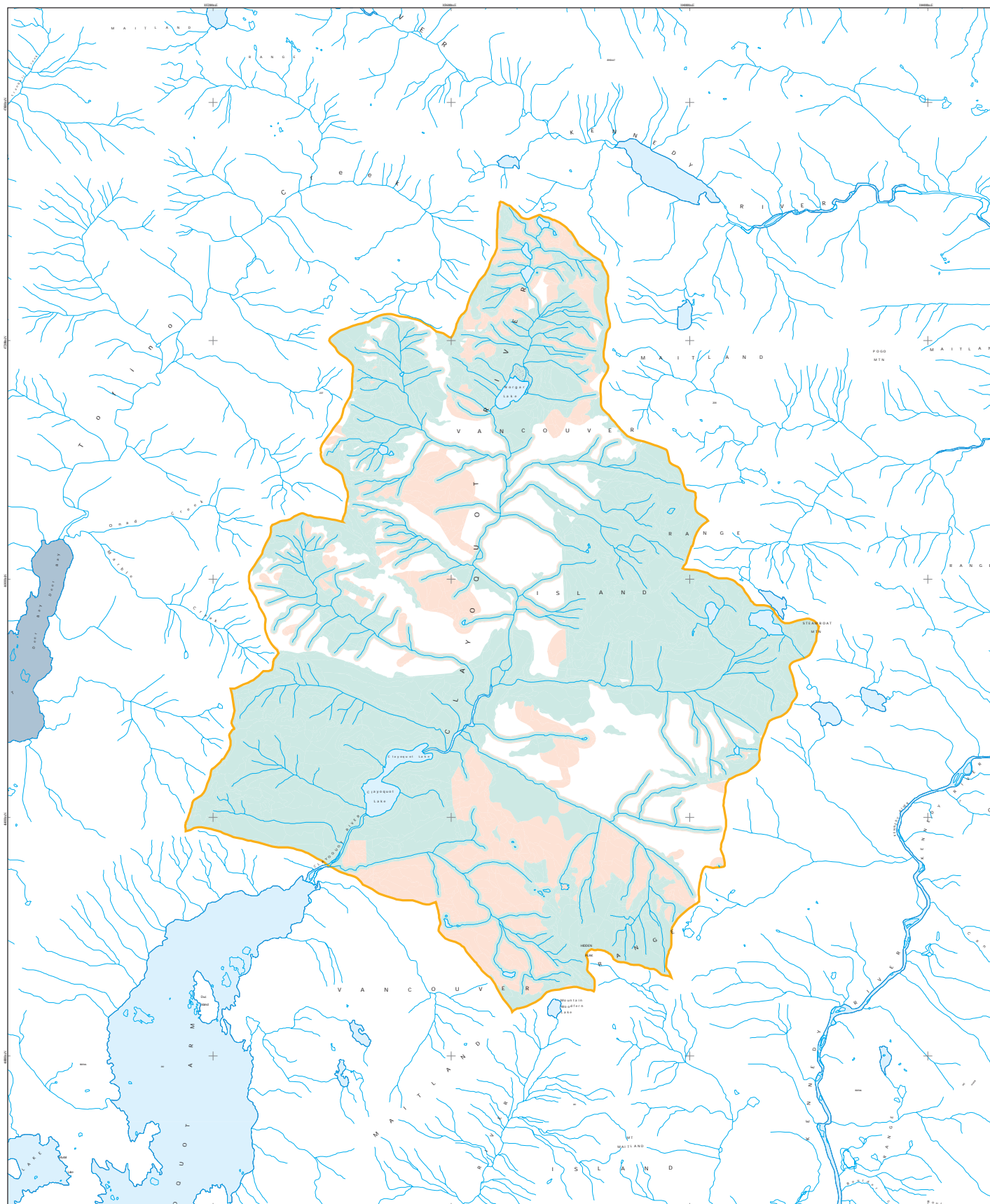
Albers Equal Area projection  
NAD83






May 15, 2006

Map produced by ERM Vancouver Island Service Centre for the Clayoquot Sound Planning Committee



**Clayoquot River Planning Unit**  
**Reserves and Harvestable Areas, including Special Management Zones**



-  Reserve Polygons
-  Special Management Zones within Harvestable Areas
-  Harvestable Areas
-  TRIM streams
-  Planning Unit Boundary

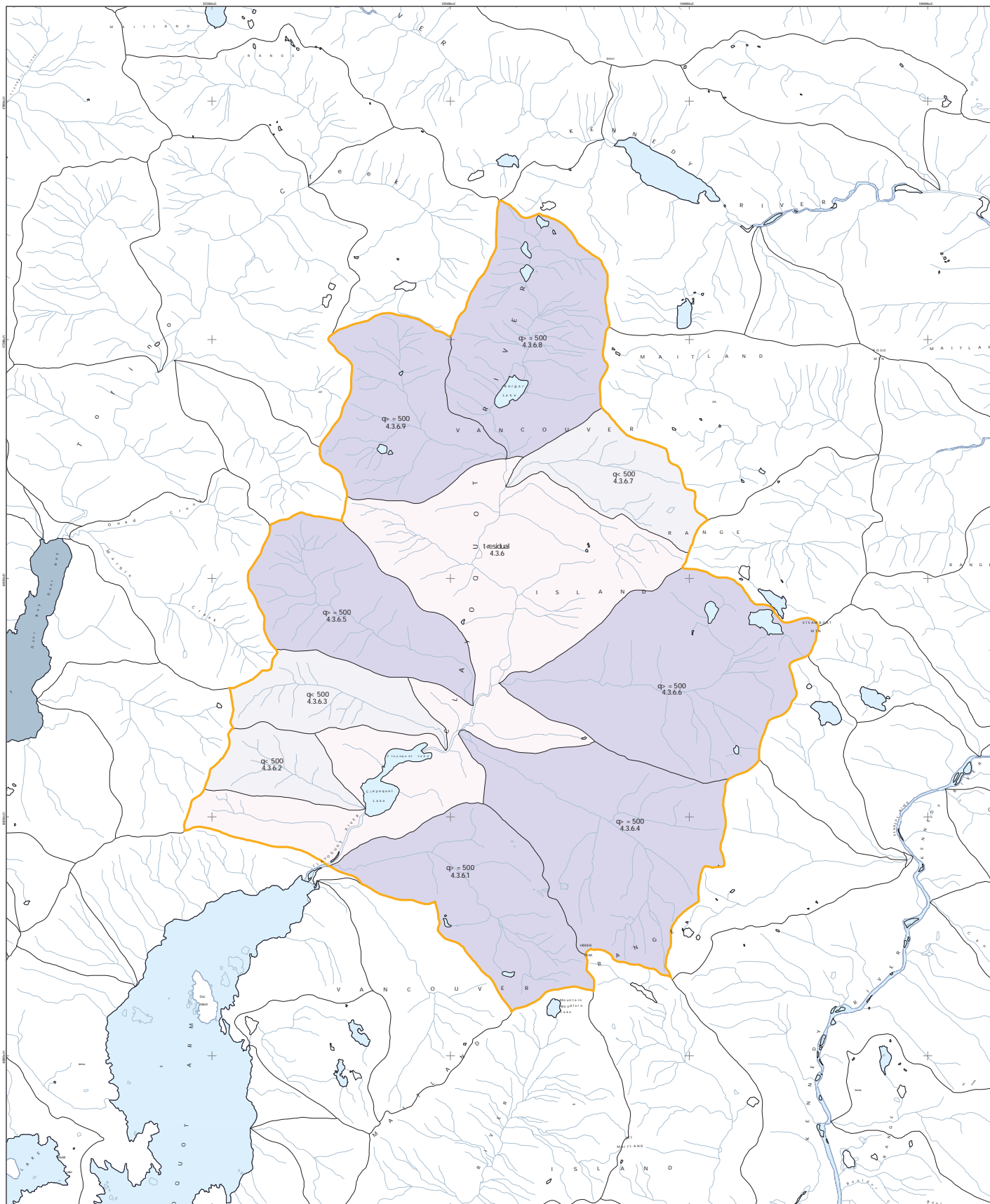


Albers Equal Area projection  
NAD83

May 15, 2006

Map produced by LNB Vancouver Island Service Centre for the Clayoquot Sound Planning Committee

# Clayoquot River Planning Unit Watershed Rate of Cut Limits



- |                                  |                            |                             |
|----------------------------------|----------------------------|-----------------------------|
| primary - not a watershed        | secondary - residual       | tertiary > = 500 hectares   |
| primary - residual               | secondary < 500 hectares   | quaternary < 500 hectares   |
| primary < 200 hectares           | secondary > = 500 hectares | quaternary > = 500 hectares |
| primary > = 200 - < 500 hectares | tertiary - residual        |                             |
| primary > = 500 hectares         | tertiary < 500 hectares    |                             |

0 1 2 Kilometers

Albers Equal Area projection  
NAD83

May 24, 2006

Map produced by ERM Vancouver Island Services Centre for the Clayoquot Sound Planning Committee