

# Landscape-level Reserves

## - Rational design

Project DS 04(b)

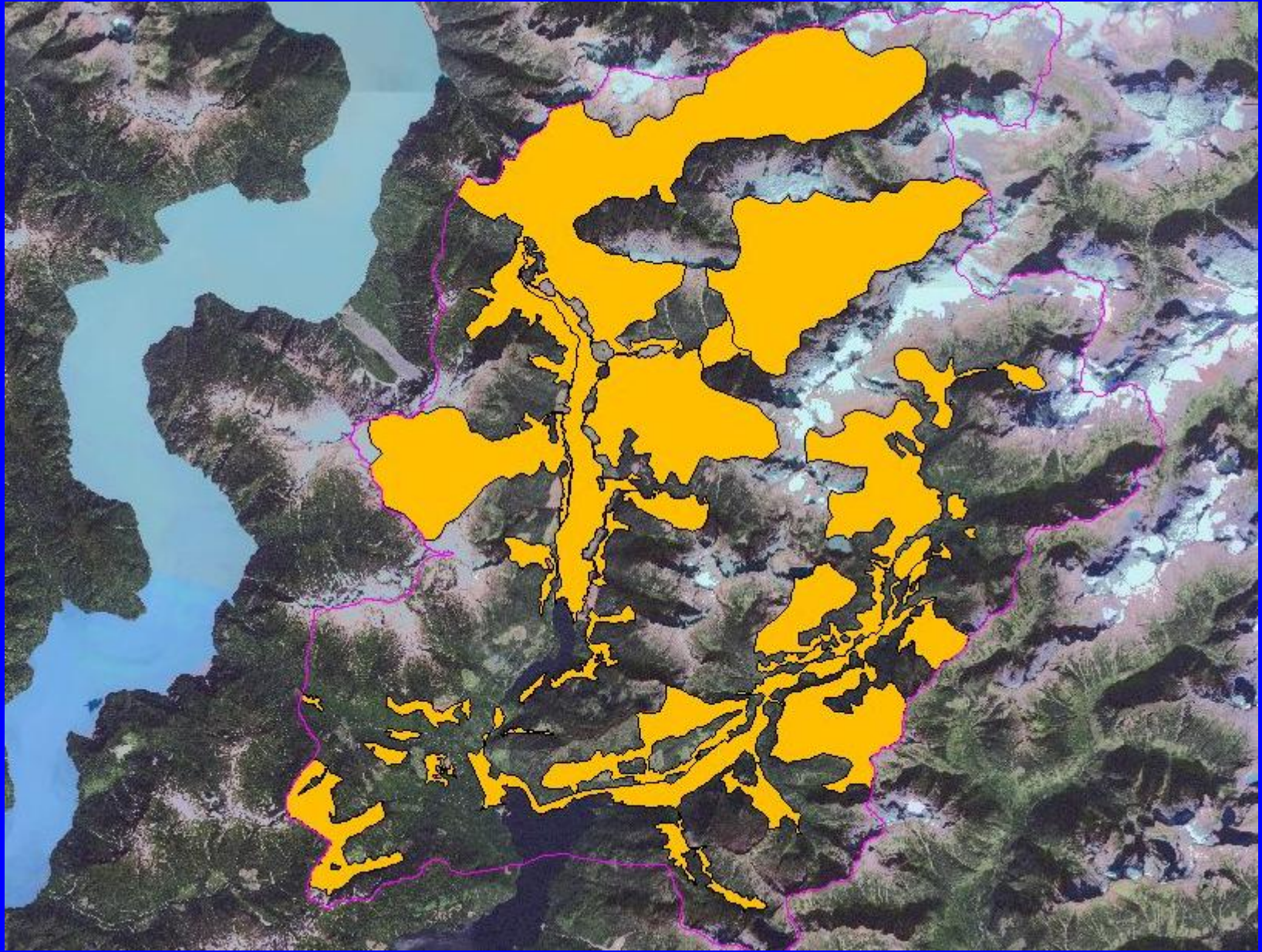
- Objectives:
- to explore different approaches to reserve design
  - SSS vs. TEM
  - Utility of Marxan inputs
- to recommend an effective, efficient approach

# Design vs. Planning

- Design – technical procedure; data-centered
- Planning – an inclusive process involving First Nations, operational forestry personnel, focal species experts and other stakeholders

# Stafford LU Design TL5

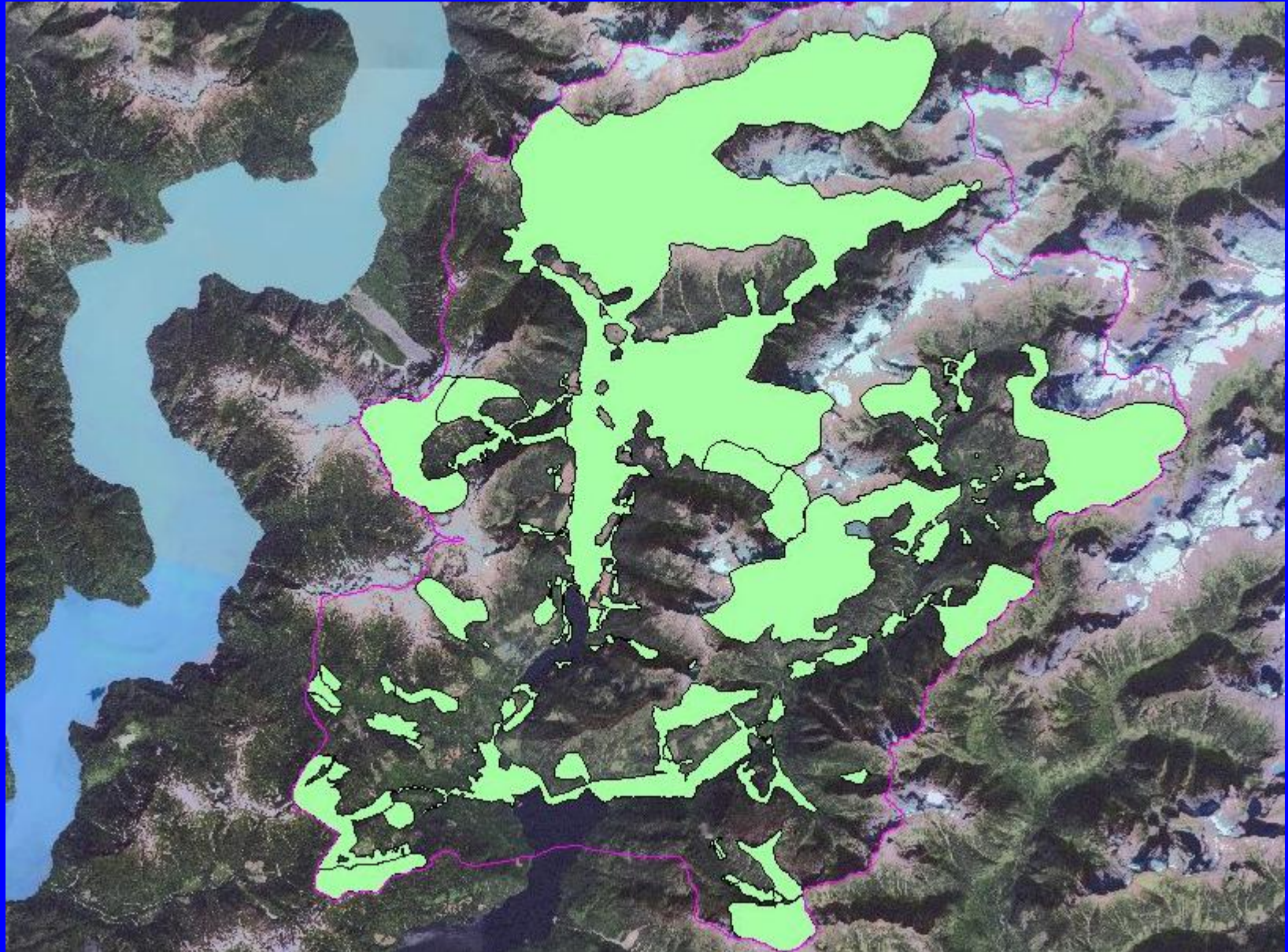
- low risk for focal species
- representation based on TEM





# Stafford LU Design LK

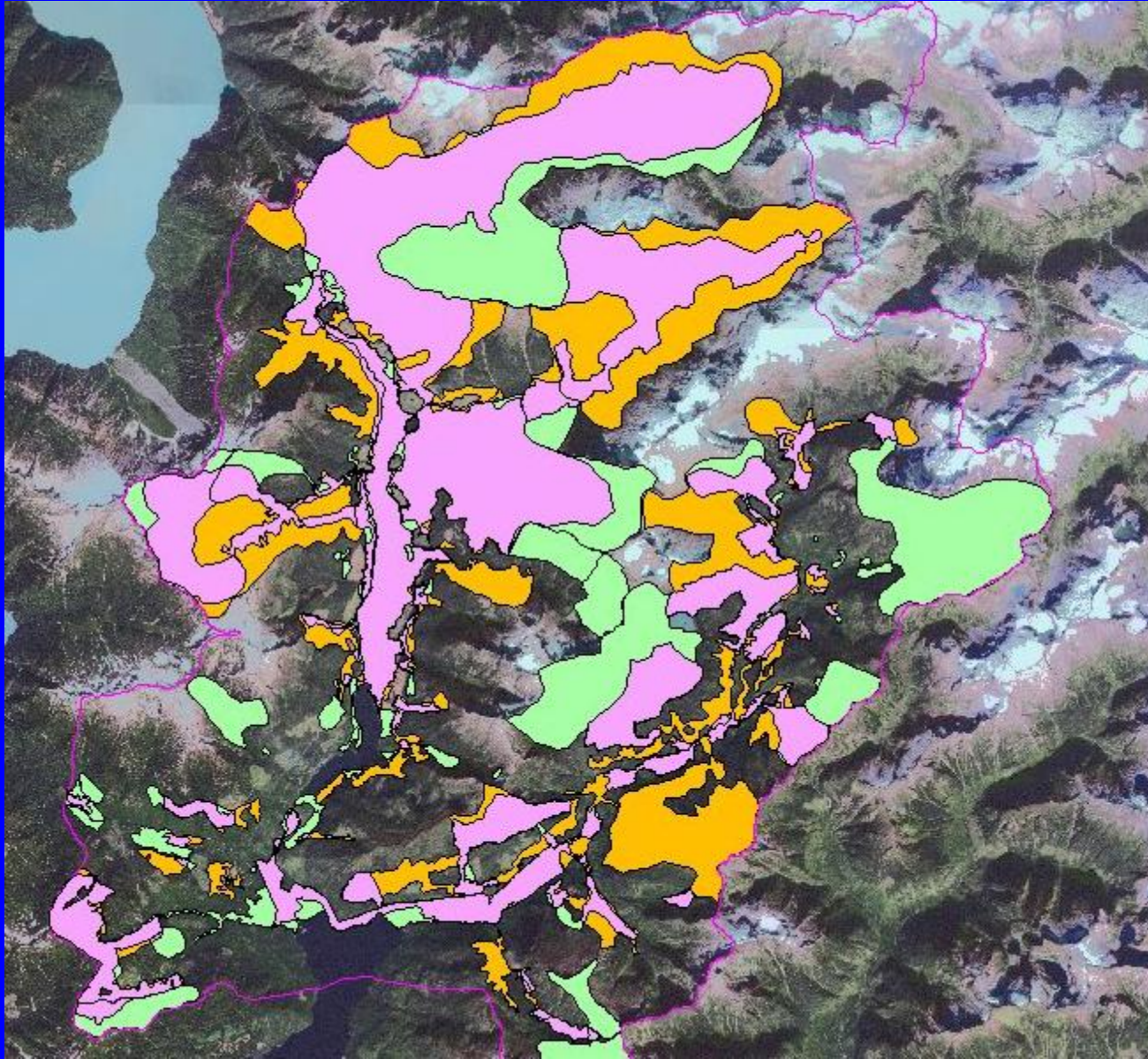
- low risk for focal species
- representation based on SSS





# Stafford LU - Design TL5 cf. LK

- representation by TEM cf. representation by SSS

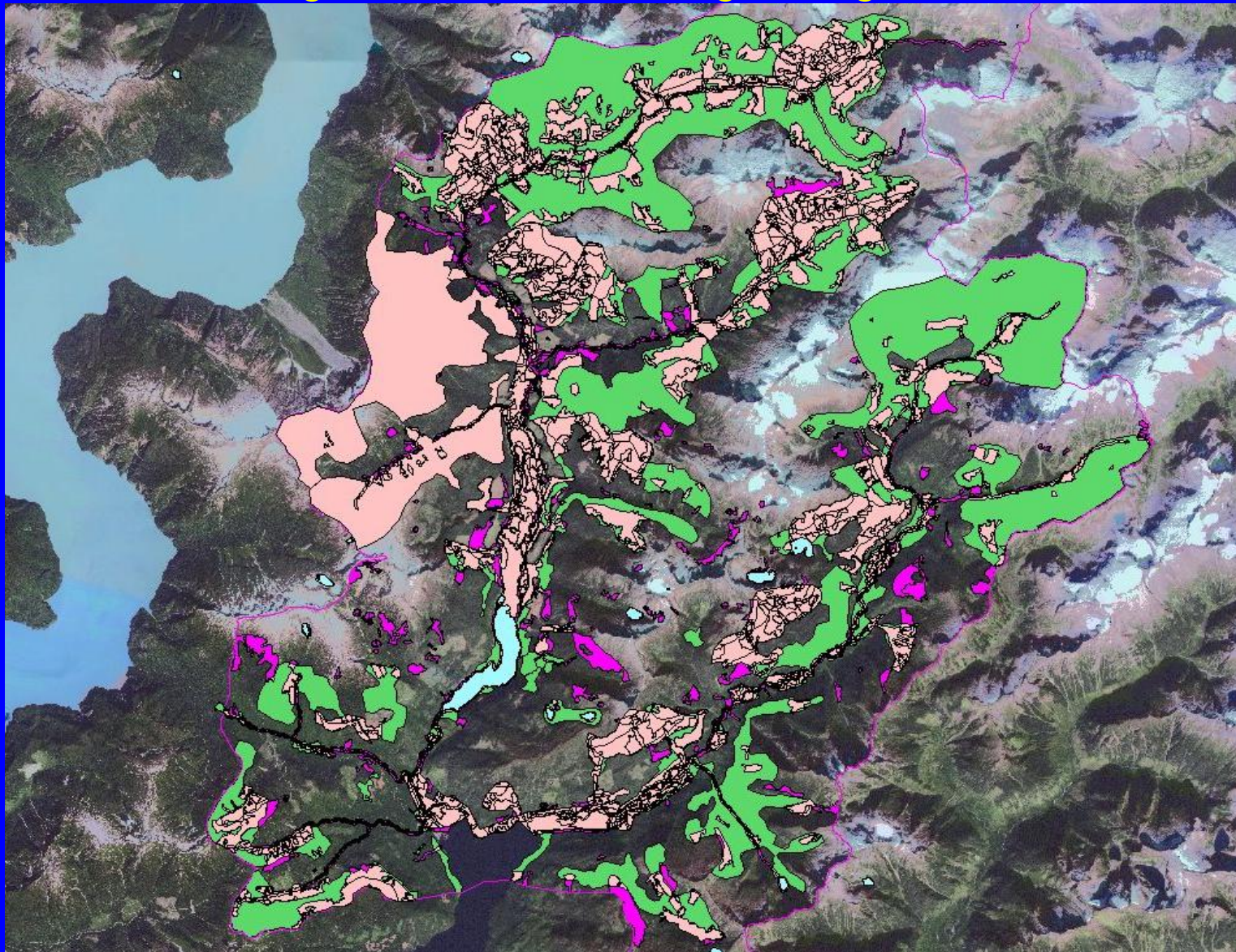


- Pink is common to both – 60%
- Green is LK only
- Orange is TL5 only
- Use TEM where available



# Stafford LU – Best30Mx cf. Marxan step3

- same goals
- rational design using Marxan vs. Marxan alone

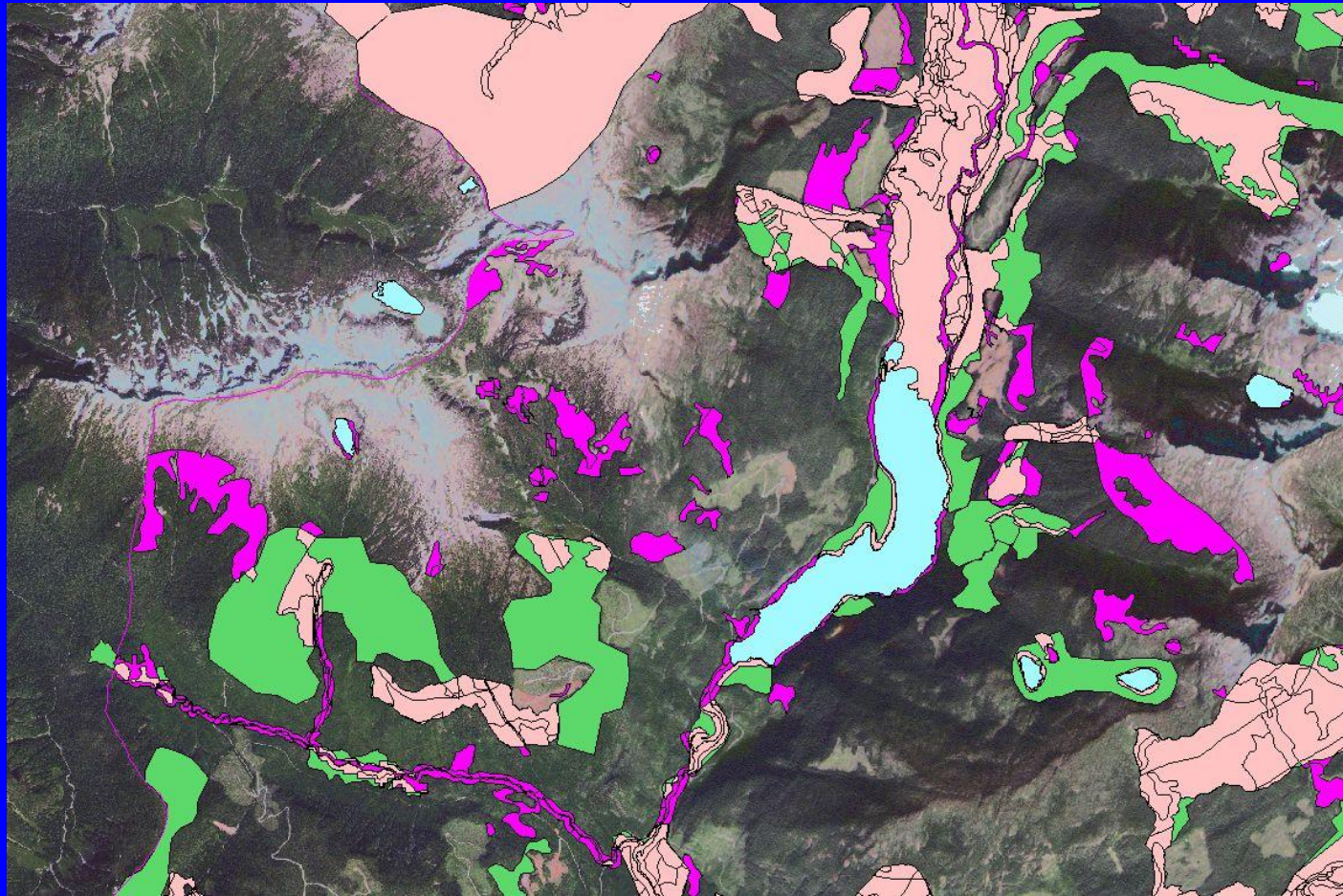


- Pink is common to both
- Green is Best 30 w Marxan (130)
- Purple is Marxan step 3 (2260)
- Use Marxan to explore target options



# Stafford LU – Best30Mx cf. Marxan step3

- same goals
- rational design using Marxan vs. Marxan alone



- Pink is common to both
- Green is Best 30 w Marxan (130)
- Purple is Marxan step 3 (2260)
- Fragmentation, edge/interior, integrity
- Focus on value, not necessarily old seral
- Designs not plans  
- concern