



File: ORCS 17580-30/CHIL

**ORDER TO ESTABLISH
A LANDSCAPE UNIT AND OBJECTIVES**

CHILLIWACK LANDSCAPE UNIT

Pursuant to Section 4 of the *Forest Practices Code of British Columbia Act*, I hereby establish the Chilliwack Landscape Unit, an area located in the vicinity of the Chilliwack River and Chilliwack Lake, effective June 24th, 2005.

The boundaries of the Chilliwack Landscape Unit are shown on the Chilliwack Landscape Unit map dated 2 December 2004 accompanying this Order.

In addition, I hereby establish Landscape Unit Objectives for the Chilliwack Landscape Unit, as attached to this Order, effective June 24th, 2005.

(Original signed by)

June 7th, 2005

**Regional Director, Coast Region,
Ministry of Sustainable Resource Management**

Date

Preamble

The goal of these objectives is to sustain biological diversity at the landscape level; permissible activities are described to streamline administrative procedures and address operational safety concerns.

First Nations traditional use of forest resources, treaty negotiations or settlements will not be limited by the following objectives.

Legal Objectives - Chilliwack Landscape Unit

Pursuant to Section 4 of the *Forest Practices Code of British Columbia Act*, the following are Landscape Unit Objectives for the Chilliwack Landscape Unit.

Objective 1

1. Maintain or recruit old growth forests in established old growth management areas (OGMAs), as shown on the attached Chilliwack Landscape Unit map dated 2 December 2004 subject to timber harvesting and road construction in accordance with section 2, 3 and 4 below.
2. (1) Where sufficient suitable replacement forest is available in the variants listed below, timber harvesting or road construction may be undertaken in OGMAs that are >10 ha in size for operational reasons up to a cumulative maximum of:
 - i) 10 ha in variant CWHdm,
 - ii) 30 ha in variant CWHms1,
 - iii) 10 ha in variant CWHvm2, and
 - iv) 50 ha in variant MHmm2,provided that replacement OGMA of equivalent or better quality and quantity is identified in order of priority, 1) immediately adjacent to the existing OGMA, or 2) in the same variant and landscape unit as the existing OGMA.
- (2) The criteria in 2 (1) is to apply to individual OGMAs within the categories below and must ensure that OGMA ecological attributes and spatial distribution are maintained or improved:
 - i) OGMAs >10 ha to <50 ha in size where the proposed activity affects the OGMA by <5 ha,
 - ii) OGMAs ≥50 ha to <100 ha in size where the proposed activity affects the OGMA by <10ha,
 - iii) OGMAs ≥100 ha in size where the proposed activity affects the OGMA by <10%.
 - iv) Construction of ≤500m of road or a bridge within an OGMA where there is no other practicable option. As an alternative to finding replacement area, the licensee may permanently deactivate and rehabilitate a temporary road or bridge site within four years after construction.
- (3) Where OGMA boundary adjustments and replacement areas are required under section 2 (1) and (2) they must be documented, mapped and submitted to the satisfaction of the Delegated Decision Maker (DDM) at the end of each calendar year for his/her approval.
- (4) The provisions in section 2 (1) and (2) do not apply to the following OGMAs #18, 37, 38, 57, 137, 147, 148, 152, and the mapped old forest portion of all OGMAs in the CWHdm.
3. Permissible Activities:
 - (1) Timber harvest may occur to prevent the spread of insect infestations or diseases that pose a significant threat to forested areas outside of OGMAs. Salvage within OGMAs will be done in a manner that retains as many old growth forest attributes as possible.
 - (2) Construction of rock quarries and gravel pits under authority of forest tenure where the development will be located immediately adjacent to existing roads under tenure and will affect the OGMA by <0.5 ha.

- (3) Intrusions, other than those specified, that affect an OGMA by less than 0.5 hectare in total.
- (4) Where OGMA replacement forest is required as a result of activities under 3 (1) or (2), it must be of equivalent or better quality and quantity and be identified in order of priority, 1) immediately adjacent to the existing OGMA, or 2) in the same variant and landscape unit as the existing OGMA; such that OGMA ecological attributes and spatial distribution are maintained or improved. OGMA replacement areas must be documented, mapped and submitted to the satisfaction of the DDM at the end of each calendar year for his/her approval.

4. Permissible Activities for Safety Purposes:

- (1) Maintenance, deactivation, removal of danger trees, or brushing and clearing on existing roads under active tenure within the right-of-way for safety purposes.
- (2) Felling of guyline clearance, tailhold anchor trees, or danger trees (except high value wildlife trees) along cutblock boundaries or within the right of way on new road/bridge alignments to meet safety requirements.

Objective 2

Maintain stand level structural diversity by retaining wildlife tree patches (WTP). Cutblocks for which harvesting has been completed by each licensee by tenure will retain adequate amounts of wildlife tree patches to ensure that over each 3 year period, commencing on the date the objectives are established, the target percentage as noted in Table A is achieved. In addition:

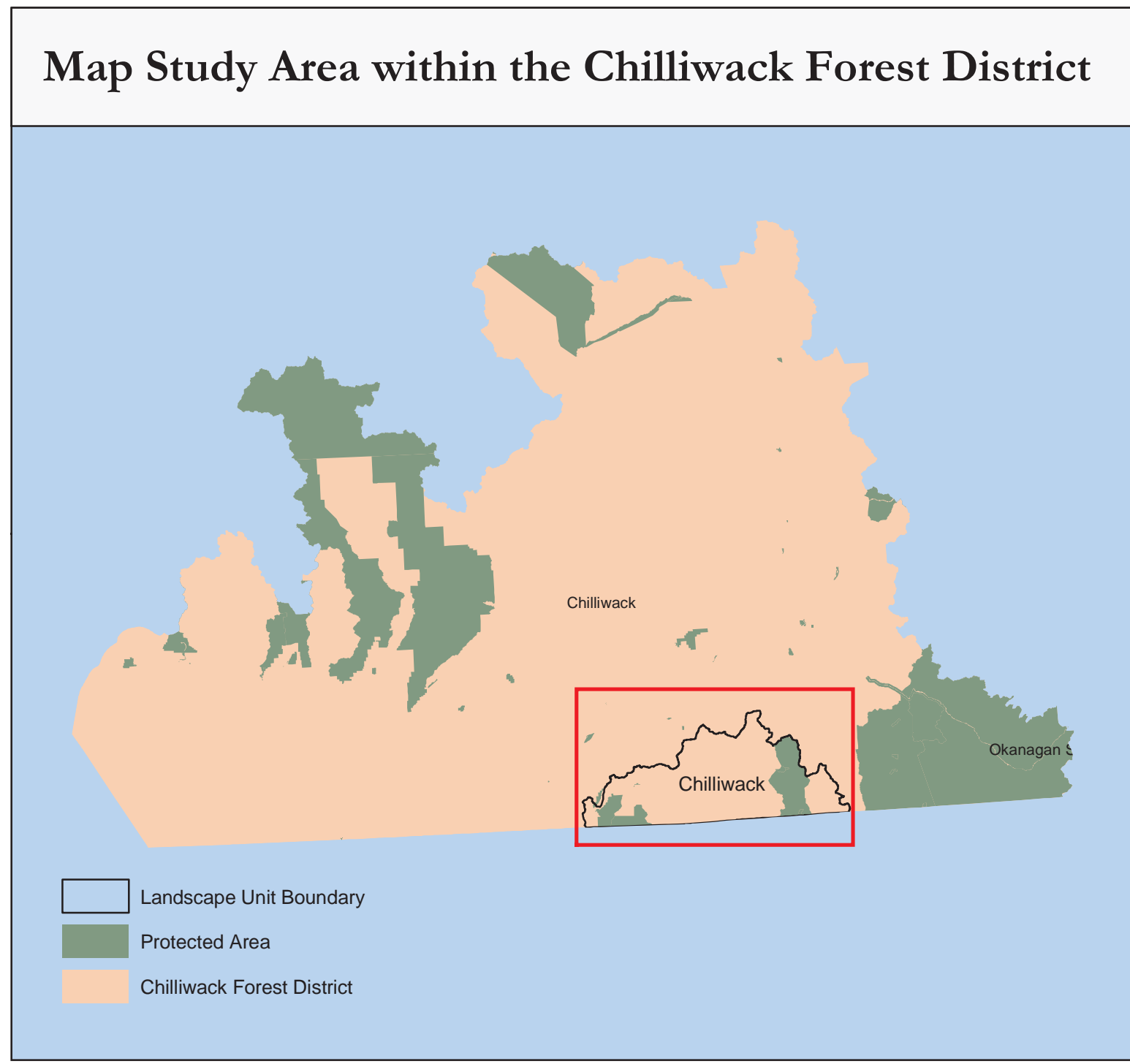
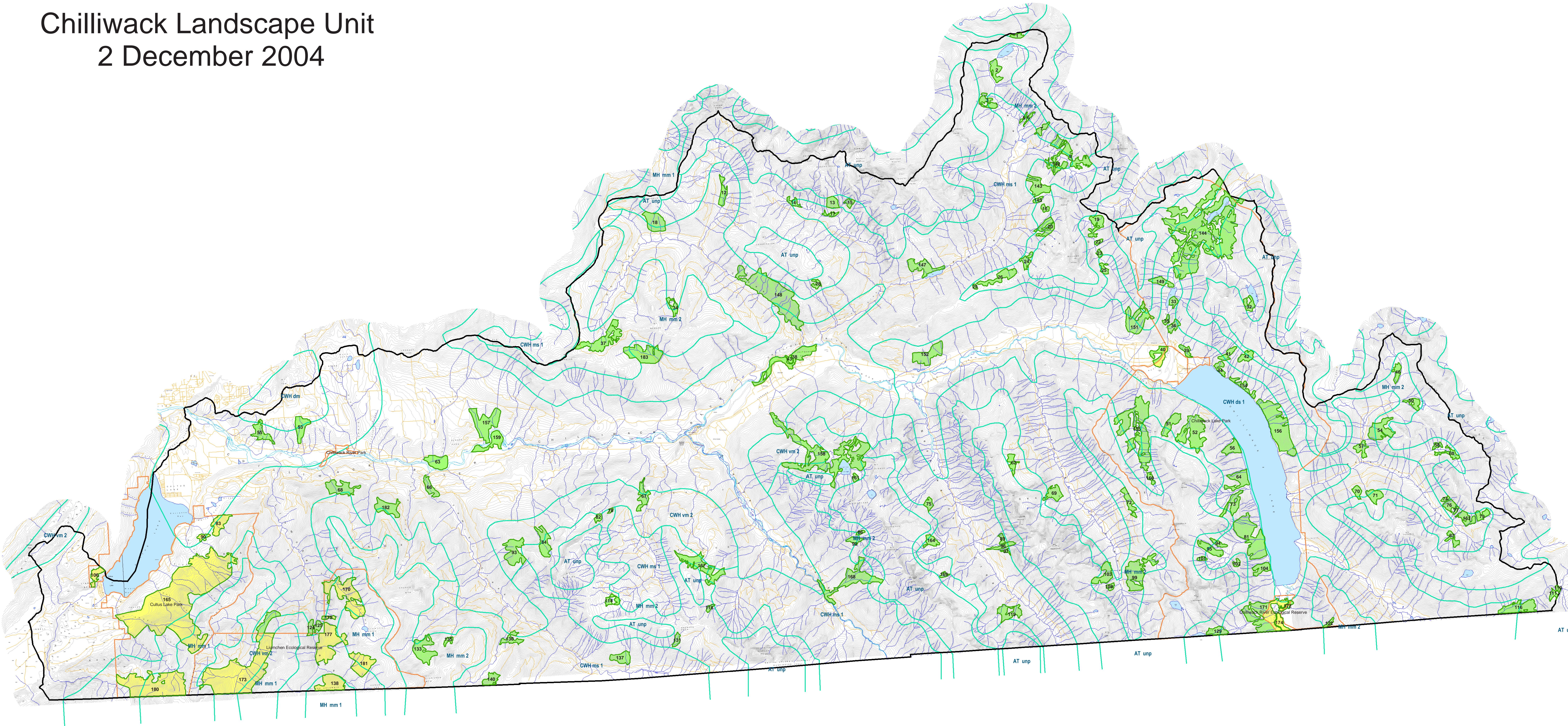
- (1) WTPs must be well distributed across the BEC subzone and located within or immediately adjacent to a cutblock.
- (2) Each cutblock >10 ha in size must have a minimum of 2% wildlife tree retention, except in the ESSFmw subzone.
- (3) No timber harvesting, including single tree selection, is to occur within WTPs for at least one rotation, except as noted in (4) below.
- (4) Salvage of windthrown timber and harvesting of remaining standing stems is only permitted within WTPs where catastrophic windthrow exceeds 50% of the dominant or co-dominant stems; or where forest health issues pose a significant threat to areas outside the WTP. Where salvage/harvesting is planned and authorized, replacement WTP of equivalent or better quality and quantity must be identified immediately to achieve the retention target.
- (5) WTPs must include, if present, remnant old growth patches and live or dead veteran trees (excluding danger trees).
- (6) WTPs must include representative larger trees for the stand and any moderate to high value wildlife trees (excluding danger trees).
- (7) Where differences exist between mapped and actual BEC subzones, subzones will be confirmed by site plan information.

Table A. Wildlife Tree Retention by BEC subzone in the Chilliwack Landscape Unit.

BEC Subzone	% Wildlife Tree Retention
CWH dm (Coastal Western Hemlock, dry maritime)	13
CWH ds (Coastal Western Hemlock, dry subarctic)	11
CWH ms (Coastal Western Hemlock, moist subarctic)	11
CWH vm (Coastal Western Hemlock, very wet maritime)	9
CWH xm (Coastal Western Hemlock, very dry maritime)	10
MH mm (Mountain Hemlock, moist maritime)	8

Chilliwack Landscape Unit

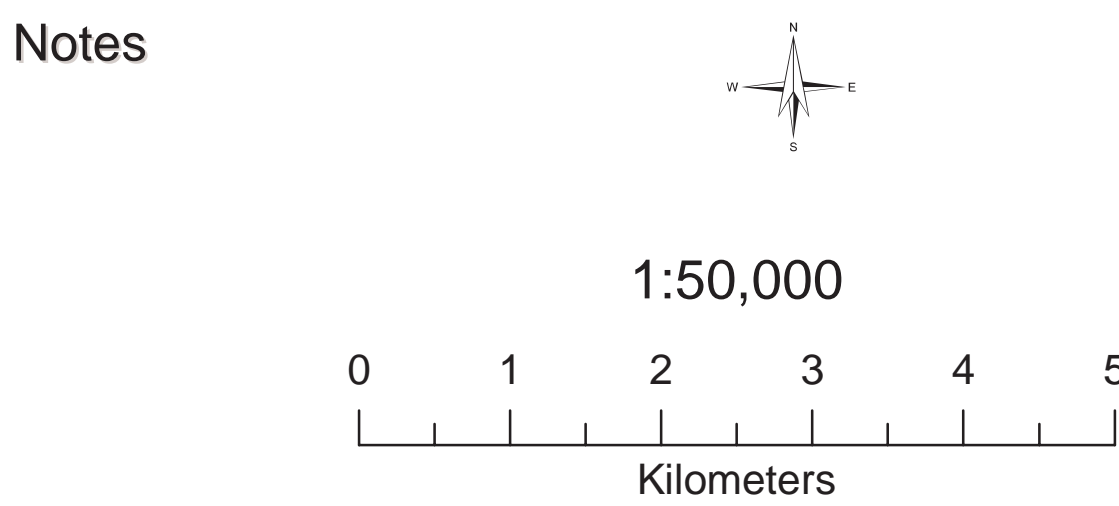
2 December 2004



Legend

- OLD GROWTH MANAGEMENT AREA
- OLD SERAL REPRESENTATION AREA
- Landscape Unit Boundary
- Protected Area
- Biogeoclimatic Zone
- Road
- Water Course
- Contour Line (20m Interval)
- Waterbody

Submitted by: AM, MSRM
(original signed by)
Regional Director, Coast Region,
Ministry of Sustainable Resource Management
(7 June 2005)
Date



Produced for:
Resource Management Division

Produced by:
BRITISH COLUMBIA
Ministry of Sustainable Resource Management
Business Solutions Branch

SPROJLIB/rmd/srmp/chilliwack/chilliwack.mxd/ChilliwackLU_LM_Dec022004.mxd
Projection/Datum: Albers Equal Area - NAD 83
Date Created: 2004-Dec-02
Created for: Surrey Contact Centre by Instar GIS Solutions