

FVRD Electoral Area 'G'  
Agricultural Land Use Inventory - 2011

Land Cover & Farmed Area

- Actively farmed
- Inactively farmed
- Anthropogenic (not farmed)
- Natural & Semi-natural

Parcels

Survey Status

- Surveyed
- Not surveyed

Agricultural Land Reserve

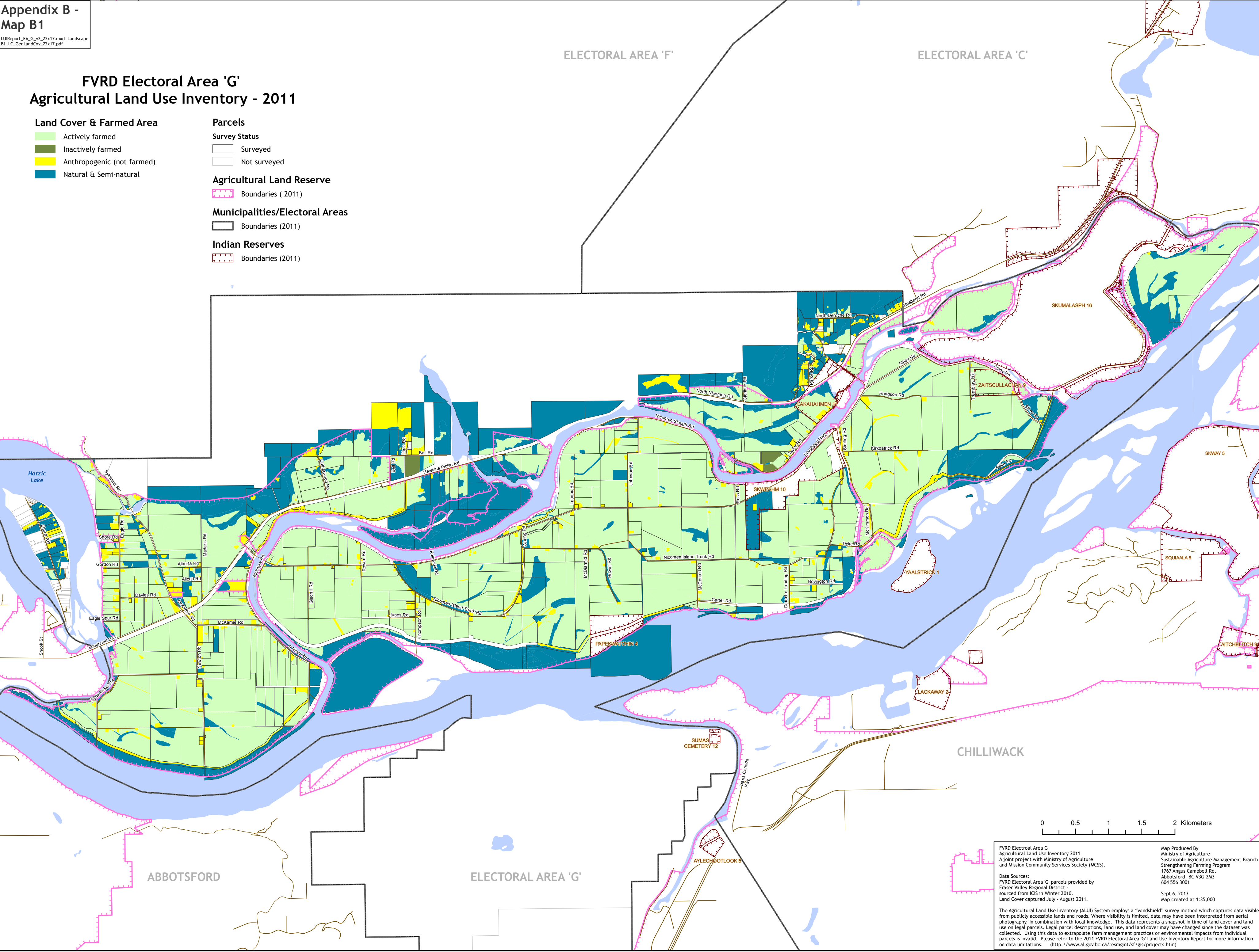
- Boundaries ( 2011)

Municipalities/Electoral Areas

- Boundaries (2011)

Indian Reserves

- Boundaries (2011)



0 0.5 1 1.5 2 Kilometers

FVRD Electoral Area 'G'  
Agricultural Land Use Inventory 2011  
A joint project with Ministry of Agriculture  
and Sustainable Agriculture Management  
Branch and Mission Community Services Society (MCSS).

Data Sources:  
FVRD Electoral Area 'G' parcels provided by  
Fraser Valley Regional District -  
sourced from ICIS in Winter 2010.  
Land Cover captured July - August 2011.

Map Produced By  
Ministry of Agriculture  
Sustainable Agriculture Management Branch  
Strengthening Farming Program  
1767 Angus Campbell Rd.  
Abbotsford, BC V3G 2M3  
604 556 3001

Sept 6, 2013  
Map created at 1:35,000

The Agricultural Land Use Inventory (ALUI) System employs a "windshield" survey method which captures data visible from publicly accessible lands and roads. Where visibility is limited, data may have been interpreted from aerial photography, in combination with local knowledge. This data represents a snapshot in time of land cover and land use on legal parcels. Legal parcel descriptions, land use, and land cover may have changed since the dataset was collected. Using this data to extrapolate farm management practices or environmental impacts from individual parcels is invalid. Please refer to the 2011 FVRD Electoral Area 'G' Land Use Inventory Report for more information on data limitations. (<http://www.al.gov.bc.ca/resmgmt/sf/gis/projects.htm>)



FVRD Electoral Area 'G'  
Agricultural Land Use Inventory - 2011

Land Cover & Farmed Area

Farmed

- Cultivated field crops
- Farm Infrastructure
- Greenhouses

Anthropogenic (not farmed)

- Managed vegetation
- Built up - Settlement, Transportation, etc.
- Non Built or Bare
- Anthropogenic Waterbodies

Natural & Semi-natural

- Vegetated
- Natural pasture
- Natural bare areas
- Waterbodies & Wetlands

Parcels

Survey Status

- Surveyed
- Not surveyed

Agricultural Land Reserve

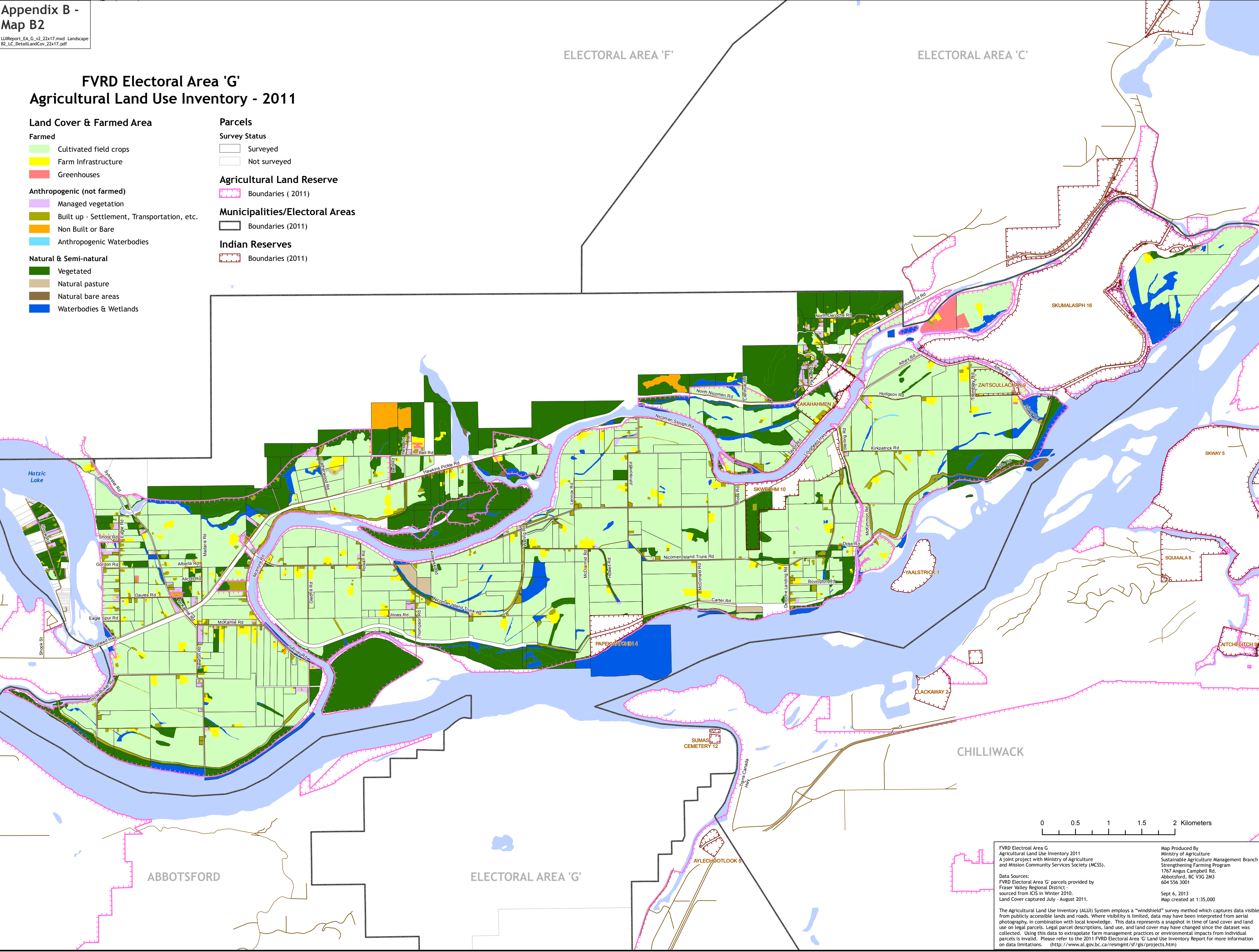
- Boundaries ( 2011)

Municipalities/Electoral Areas

- Boundaries (2011)

Indian Reserves

- Boundaries (2011)



FVRD Electoral Area 'G'  
Agricultural Land Use Inventory 2011  
A joint project with Ministry of Agriculture  
and Sustainable Agriculture Management  
Branch and Mission Community Services Society (MCSS).

Data Sources:  
FVRD Electoral Area 'G' parcels provided by  
Fraser Valley Regional District -  
sourced from ICIS in Winter 2010.  
Land Cover captured July - August 2011.

The Agricultural Land Use Inventory (ALUI) System employs a "windshield" survey method which captures data visible from publicly accessible lands and roads. Where visibility is limited, data may have been interpreted from aerial photography, in combination with local knowledge. This data represents a snapshot in time of land cover and land use on legal parcels. Legal parcel descriptions, land use, and land cover may have changed since the dataset was collected. Using this data to extrapolate farm management practices or environmental impacts from individual parcels is invalid. Please refer to the 2011 FVRD Electoral Area 'G' Land Use Inventory Report for more information on data limitations. (<http://www.al.gov.bc.ca/resmgmt/sf/gis/projects.htm>)

Map Produced By  
Ministry of Agriculture  
Sustainable Agriculture Management Branch  
Strengthening Farming Program  
1767 Angus Campbell Rd.  
Abbotsford, BC V3G 2M3  
604 556 3001

Sept 6, 2013  
Map created at 1:35,000



FVRD Electoral Area 'G'  
Agricultural Land Use Inventory - 2011

- Parcel Land Use

  - "Used for farming"
  - "Not used for farming"
- Parcels

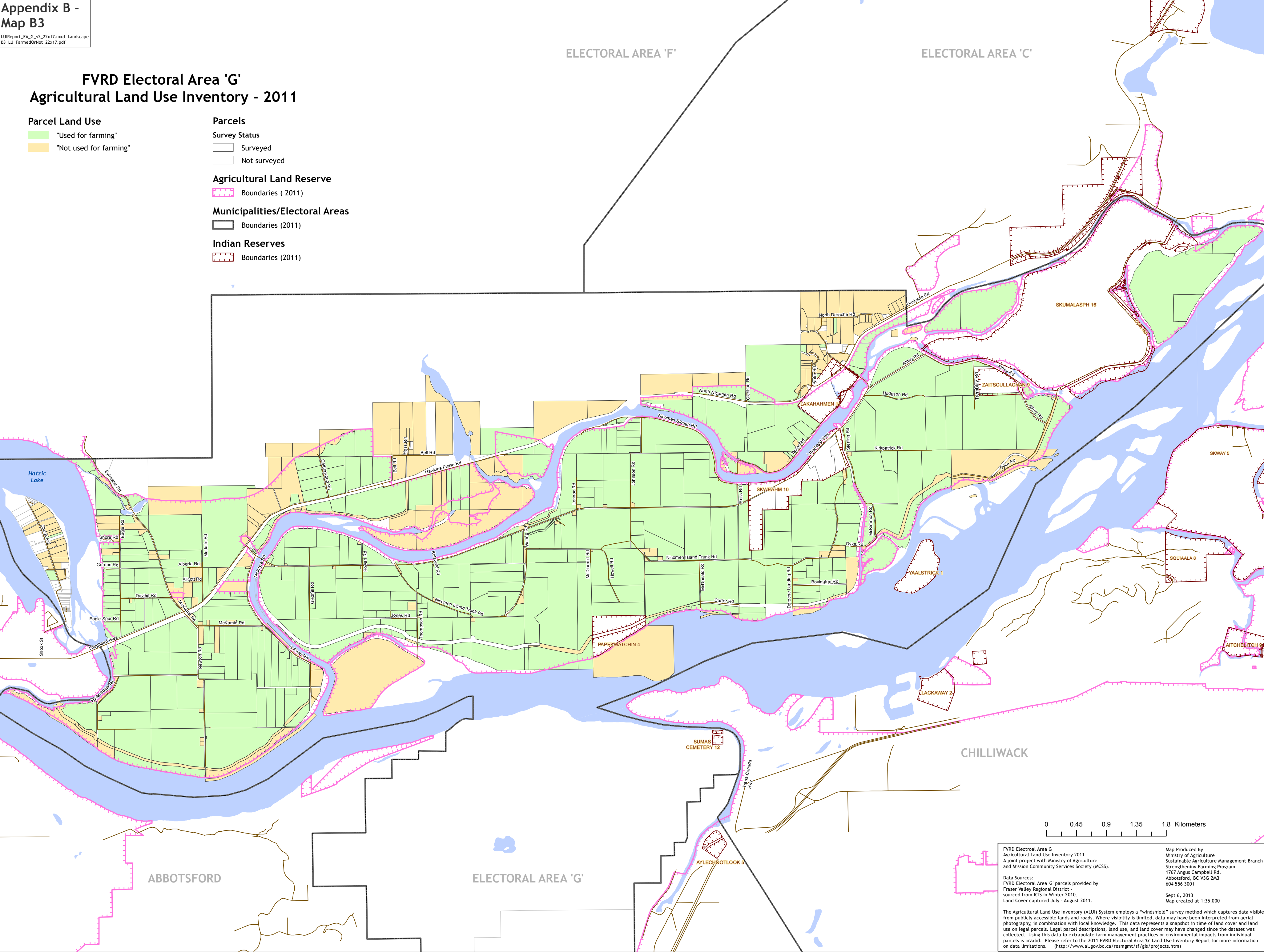
Survey Status

  - Surveyed
  - Not surveyed
- Agricultural Land Reserve

  - Boundaries ( 2011)
- Municipalities/Electoral Areas

  - Boundaries (2011)
- Indian Reserves

  - Boundaries (2011)



FVRD Electoral Area 'G'  
Agricultural Land Use Inventory 2011  
A joint project with Ministry of Agriculture  
and Mission Community Services Society (MCSS).

Map Produced By  
Ministry of Agriculture  
Sustainable Agriculture Management Branch  
Strengthening Farming Program  
1767 Angus Campbell Rd.  
Abbotsford, BC V3G 2M3  
604 556 3001

Data Sources:  
FVRD Electoral Area 'G' parcels provided by  
Fraser Valley Regional District -  
sourced from ICIS in Winter 2010.  
Land Cover captured July - August 2011.

Sept 6, 2013  
Map created at 1:35,000

The Agricultural Land Use Inventory (ALUI) System employs a "windshield" survey method which captures data visible from publicly accessible lands and roads. Where visibility is limited, data may have been interpreted from aerial photography, in combination with local knowledge. This data represents a snapshot in time of land cover and land use on legal parcels. Legal parcel descriptions, land use, and land cover may have changed since the dataset was collected. Using this data to extrapolate farm management practices or environmental impacts from individual parcels is invalid. Please refer to the 2011 FVRD Electoral Area 'G' Land Use Inventory Report for more information on data limitations. (<http://www.al.gov.bc.ca/resmgmt/sf/gis/projects.htm>)



FVRD Electoral Area 'G'  
Agricultural Land Use Inventory - 2011

Land Use & Farming

Used for farming - mixed use

Land use

- Used only for farming
- Residential
- Transportation & communications
- Commercial & service
- No apparent use
- Recreation & leisure
- Institutional & community
- Industrial
- Forestry
- Gravel extraction
- Water management
- Utilities

Parcels

Survey Status

- Surveyed
- Not surveyed

Agricultural Land Reserve

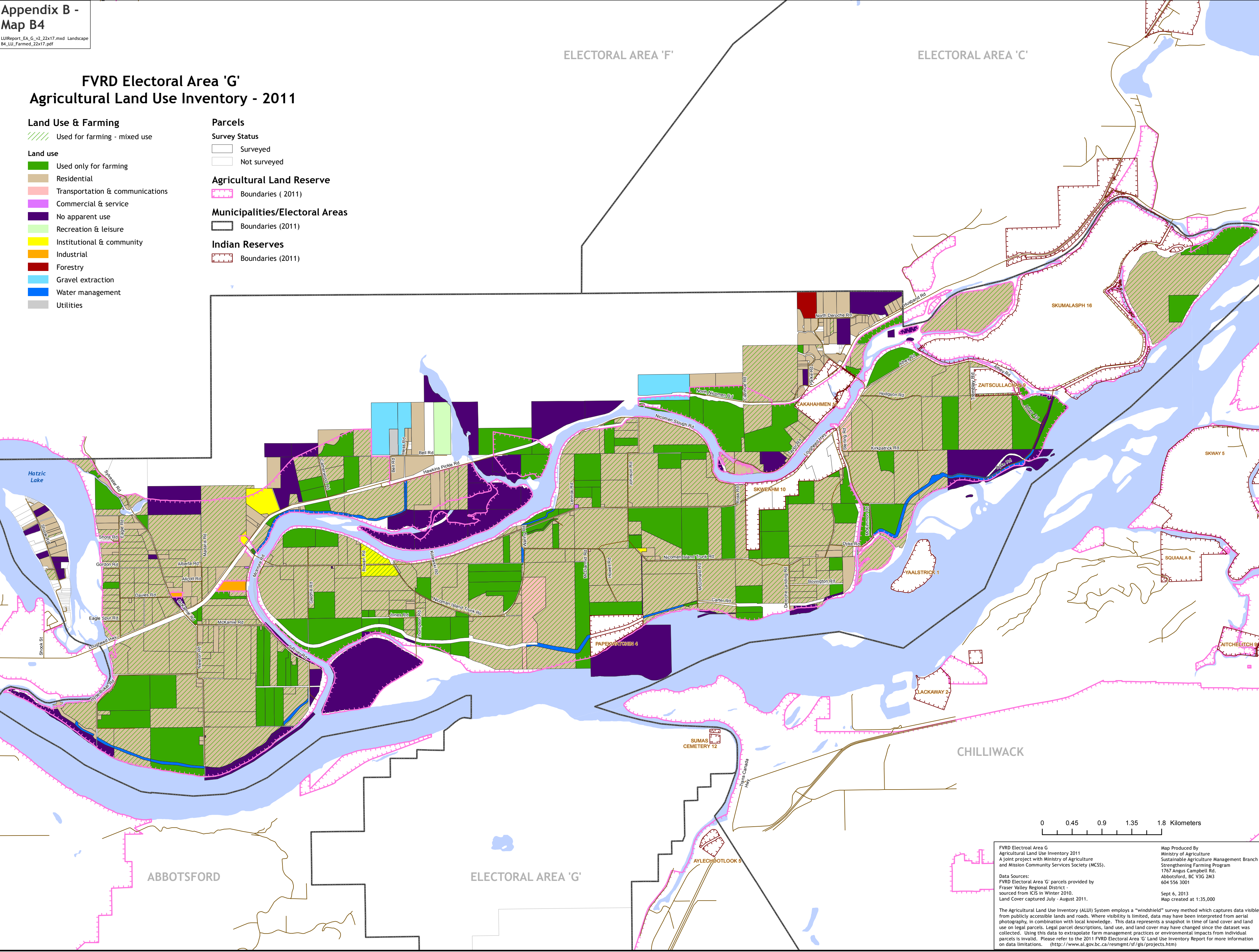
Boundaries ( 2011)

Municipalities/Electoral Areas

Boundaries (2011)

Indian Reserves

Boundaries (2011)



FVRD Electoral Area 'G'  
Agricultural Land Use Inventory 2011  
A joint project with Ministry of Agriculture  
and Sustainable Agriculture Management  
Branch and Mission Community Services Society (MCSS).

Data Sources:  
FVRD Electoral Area 'G' parcels provided by  
Fraser Valley Regional District -  
sourced from ICIS in Winter 2010.  
Land Cover captured July - August 2011.

The Agricultural Land Use Inventory (ALUI) System employs a "windshield" survey method which captures data visible from publicly accessible lands and roads. Where visibility is limited, data may have been interpreted from aerial photography, in combination with local knowledge. This data represents a snapshot in time of land cover and land use on legal parcels. Legal parcel descriptions, land use, and land cover may have changed since the dataset was collected. Using this data to extrapolate farm management practices or environmental impacts from individual parcels is invalid. Please refer to the 2011 FVRD Electoral Area 'G' Land Use Inventory Report for more information on data limitations. (<http://www.al.gov.bc.ca/resmgmt/sf/gis/projects.htm>)

Map Produced By  
Ministry of Agriculture  
Sustainable Agriculture Management Branch  
Strengthening Farming Program  
1767 Angus Campbell Rd.  
Abbotsford, BC V3G 2M3  
604 556 3001

Sept 6, 2013  
Map created at 1:35,000



FVRD Electoral Area 'G'  
Agricultural Land Use Inventory - 2011

- Land Status with Respect to Farming**

  - Actively farmed
  - Farming support
  - Unavailable for farming - land use
  - Unavailable for farming - land cover
  - Limited potential for farming - site limitation
  - Available & with potential for farming
- Parcels**

**Survey Status**

  - Surveyed
  - Not surveyed

**Agricultural Land Reserve**

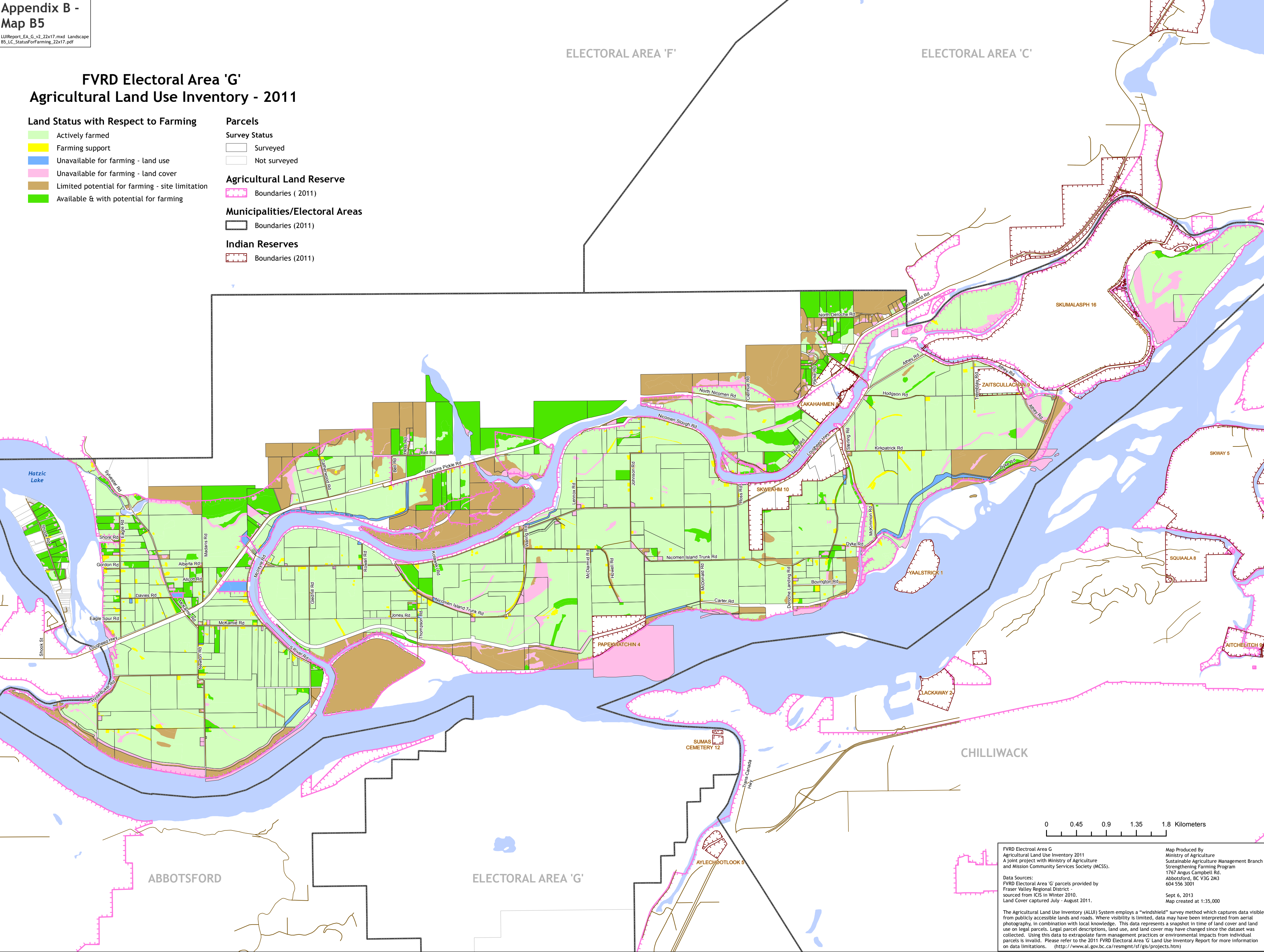
  - Boundaries ( 2011)

**Municipalities/Electoral Areas**

  - Boundaries (2011)

**Indian Reserves**

  - Boundaries (2011)



FVRD Electoral Area 'G'  
Agricultural Land Use Inventory 2011  
A joint project with Ministry of Agriculture  
and Sustainable Agriculture Management  
Branch and Mission Community Services Society (MCSS).

Data Sources:  
FVRD Electoral Area 'G' parcels provided by  
Fraser Valley Regional District -  
sourced from ICIS in Winter 2010.  
Land Cover captured July - August 2011.

Map Produced By  
Ministry of Agriculture  
Sustainable Agriculture Management Branch  
Strengthening Farming Program  
1767 Angus Campbell Rd.  
Abbotsford, BC V3G 2M3  
604 556 3001

Sept 6, 2013  
Map created at 1:35,000

The Agricultural Land Use Inventory (ALUI) System employs a "windshield" survey method which captures data visible from publicly accessible lands and roads. Where visibility is limited, data may have been interpreted from aerial photography, in combination with local knowledge. This data represents a snapshot in time of land cover and land use on legal parcels. Legal parcel descriptions, land use, and land cover may have changed since the dataset was collected. Using this data to extrapolate farm management practices or environmental impacts from individual parcels is invalid. Please refer to the 2011 FVRD Electoral Area 'G' Land Use Inventory Report for more information on data limitations. (<http://www.al.gov.bc.ca/resmgmt/sf/gis/projects.htm>)



FVRD Electoral Area 'G'  
Agricultural Land Use Inventory - 2011

Physical Site Limitation

- Drainage and/or flooding
- Slope
- Operational
- Soils

Parcels

- Survey Status
- Surveyed
  - Not surveyed

Agricultural Land Reserve

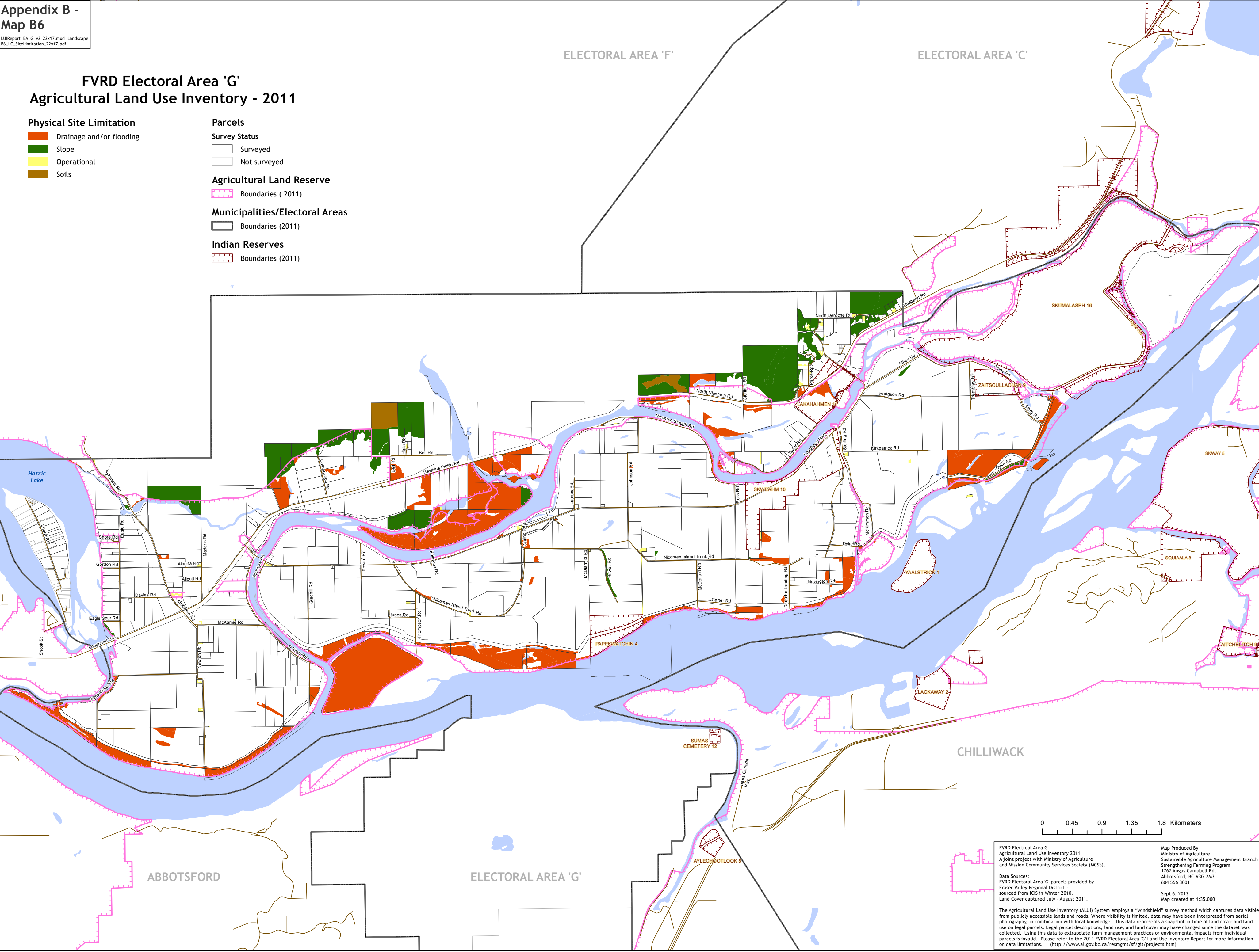
- Boundaries ( 2011)

Municipalities/Electoral Areas

- Boundaries (2011)

Indian Reserves

- Boundaries (2011)



0 0.45 0.9 1.35 1.8 Kilometers

FVRD Electoral Area 'G'  
Agricultural Land Use Inventory 2011  
A joint project with Ministry of Agriculture  
and Mission Community Services Society (MCSS).

Map Produced By  
Ministry of Agriculture  
Sustainable Agriculture Management Branch  
Strengthening Farming Program  
1767 Angus Campbell Rd.  
Abbotsford, BC V3G 2M3  
604 556 3001

Data Sources:  
FVRD Electoral Area 'G' parcels provided by  
Fraser Valley Regional District -  
sourced from ICIS in Winter 2010.  
Land Cover captured July - August 2011.

Sept 6, 2013  
Map created at 1:35,000

The Agricultural Land Use Inventory (ALUI) System employs a "windshield" survey method which captures data visible from publicly accessible lands and roads. Where visibility is limited, data may have been interpreted from aerial photography, in combination with local knowledge. This data represents a snapshot in time of land cover and land use on legal parcels. Legal parcel descriptions, land use, and land cover may have changed since the dataset was collected. Using this data to extrapolate farm management practices or environmental impacts from individual parcels is invalid. Please refer to the 2011 FVRD Electoral Area 'G' Land Use Inventory Report for more information on data limitations. (<http://www.al.gov.bc.ca/resmgmt/sf/gis/projects.htm>)



FVRD Electoral Area 'G'  
Agricultural Land Use Inventory - 2011

Land Available & with Potential for FarmingParcels

- On parcels "Used for farming"
- On parcels "Not used for farming"

- Survey Status
- Surveyed
  - Not surveyed

Agricultural Land Reserve

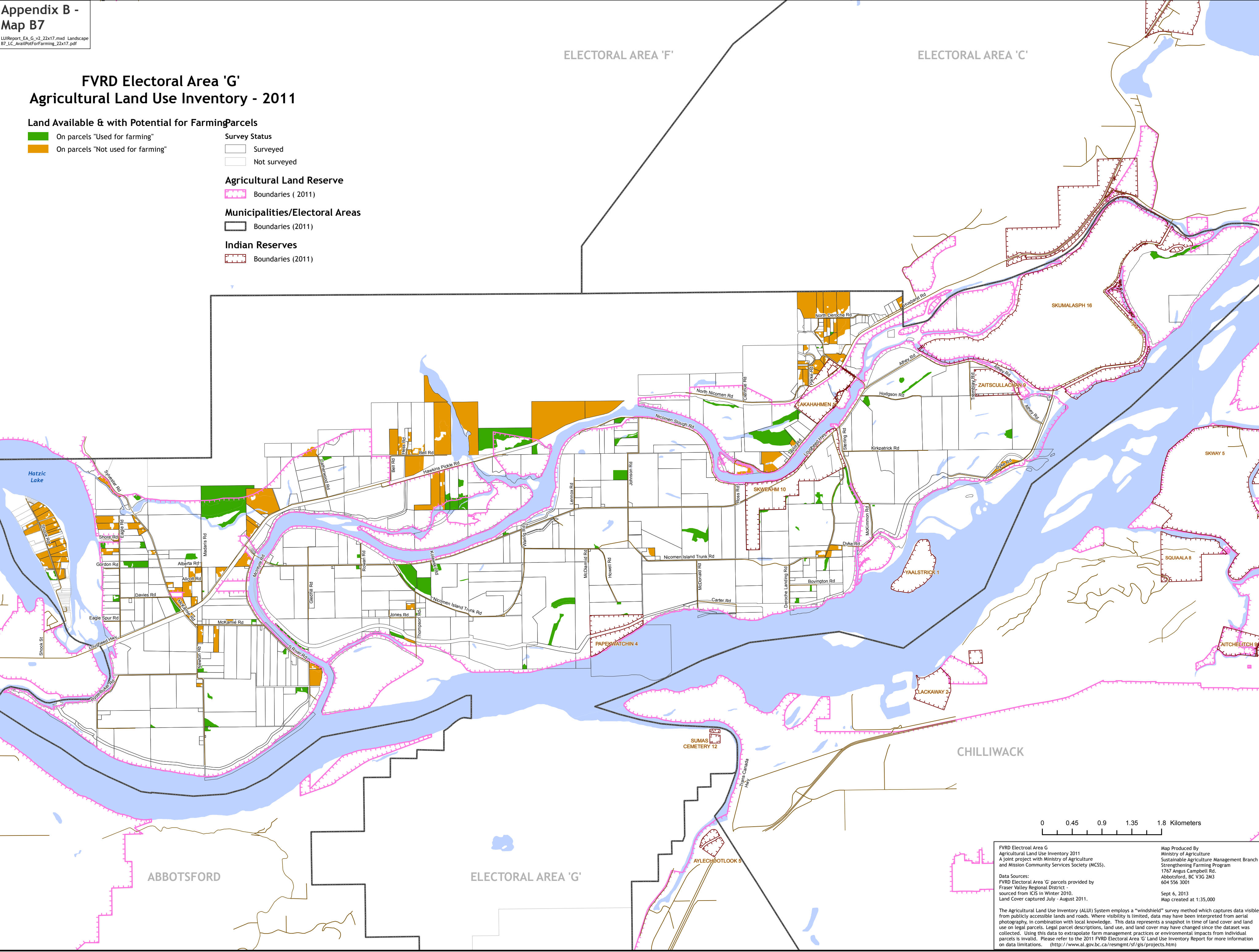
- Boundaries ( 2011)

Municipalities/Electoral Areas

- Boundaries (2011)

Indian Reserves

- Boundaries (2011)



FVRD Electoral Area 'G'  
Agricultural Land Use Inventory 2011  
A joint project with Ministry of Agriculture  
and Mission Community Services Society (MCSS).

Map Produced By  
Ministry of Agriculture  
Sustainable Agriculture Management Branch  
Strengthening Farming Program  
1767 Angus Campbell Rd.  
Abbotsford, BC V3G 2M3  
604 556 3001

Data Sources:  
FVRD Electoral Area 'G' parcels provided by  
Fraser Valley Regional District -  
sourced from ICIS in Winter 2010.  
Land Cover captured July - August 2011.

Sept 6, 2013  
Map created at 1:35,000

The Agricultural Land Use Inventory (ALUI) System employs a "windshield" survey method which captures data visible from publicly accessible lands and roads. Where visibility is limited, data may have been interpreted from aerial photography, in combination with local knowledge. This data represents a snapshot in time of land cover and land use on legal parcels. Legal parcel descriptions, land use, and land cover may have changed since the dataset was collected. Using this data to extrapolate farm management practices or environmental impacts from individual parcels is invalid. Please refer to the 2011 FVRD Electoral Area 'G' Land Use Inventory Report for more information on data limitations. (<http://www.al.gov.bc.ca/resmgmt/sf/gis/projects.htm>)



FVRD Electoral Area 'G'  
Agricultural Land Use Inventory - 2011

Cultivated Field Crops

- Forage & pasture
- Vines & berries
- Nursery & tree plantations
- Turf
- Specialty, Nut trees
- Vegetables (only 3)
- Other (only 2)
- Tree fruits (only 2)

Greenhouses

- <1 hectare ( 11 greenhouses)
- 3.8 hectares ( 1 greenhouse)
- 15.4 hectares ( 1 greenhouse)

Parcels

- Survey Status
- Surveyed
  - Not surveyed

Agricultural Land Reserve

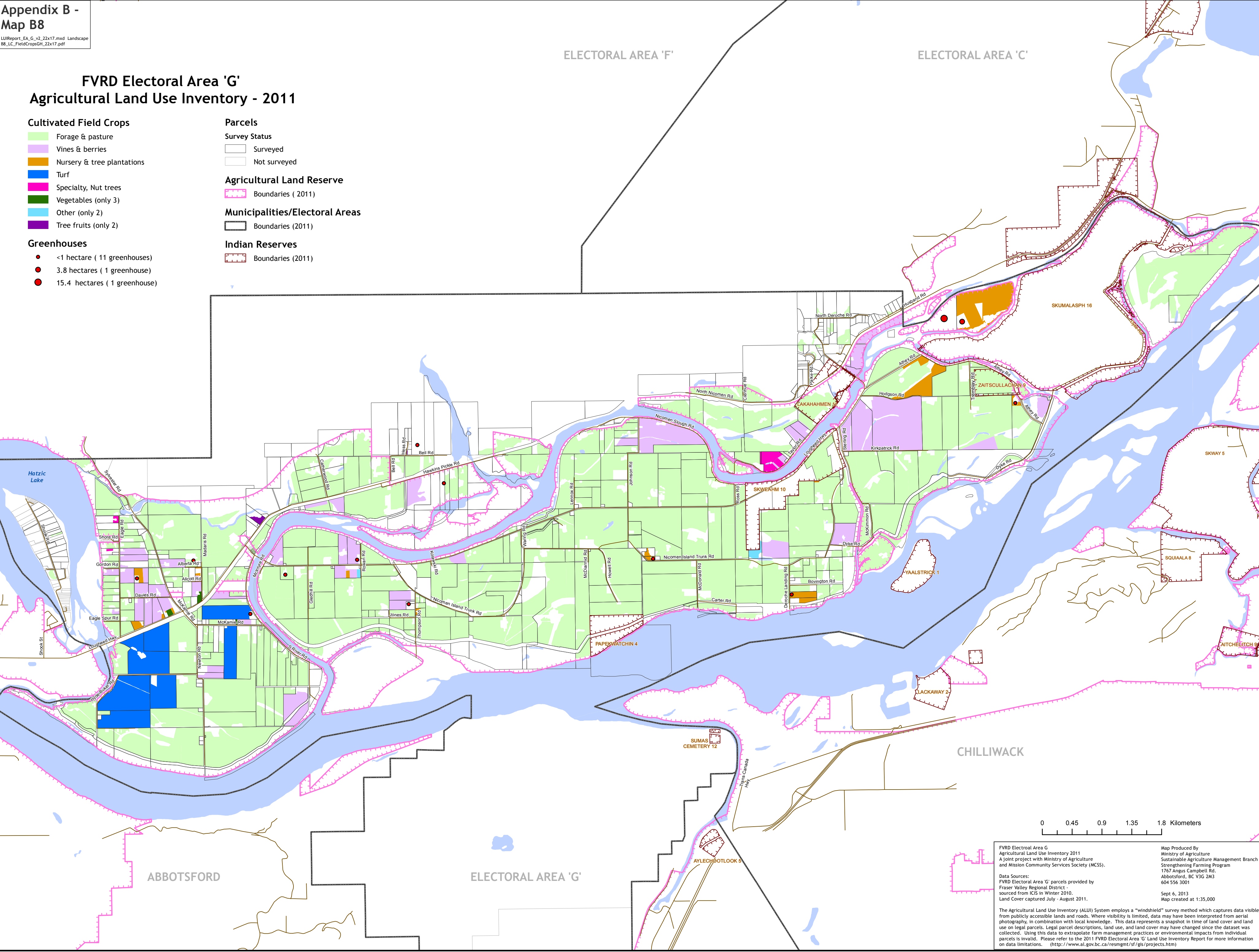
- Boundaries ( 2011)

Municipalities/Electoral Areas

- Boundaries (2011)

Indian Reserves

- Boundaries (2011)



0 0.45 0.9 1.35 1.8 Kilometers

FVRD Electoral Area 'G'  
Agricultural Land Use Inventory 2011  
A joint project with Ministry of Agriculture  
and Sustainable Agriculture Management  
Branch and Mission Community Services Society (MCSS).

Map Produced By  
Ministry of Agriculture  
Sustainable Agriculture Management Branch  
Strengthening Farming Program  
1767 Angus Campbell Rd.  
Abbotsford, BC V3G 2M3  
604 556 3001

Data Sources:  
FVRD Electoral Area 'G' parcels provided by  
Fraser Valley Regional District -  
sourced from ICIS in Winter 2010.  
Land Cover captured July - August 2011.

Sept 6, 2013  
Map created at 1:35,000

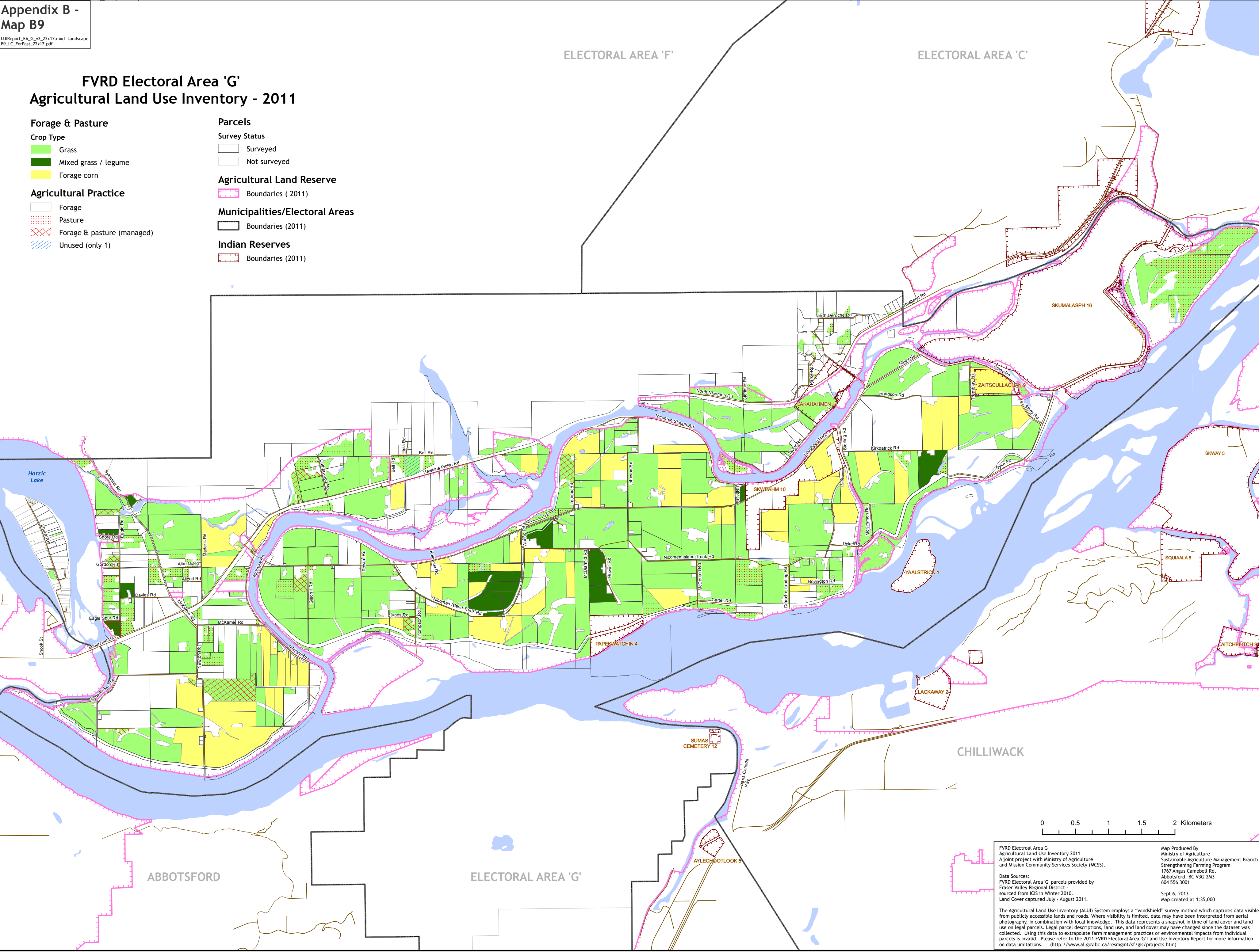
The Agricultural Land Use Inventory (ALUI) System employs a "windshield" survey method which captures data visible from publicly accessible lands and roads. Where visibility is limited, data may have been interpreted from aerial photography, in combination with local knowledge. This data represents a snapshot in time of land cover and land use on legal parcels. Legal parcel descriptions, land use, and land cover may have changed since the dataset was collected. Using this data to extrapolate farm management practices or environmental impacts from individual parcels is invalid. Please refer to the 2011 FVRD Electoral Area 'G' Land Use Inventory Report for more information on data limitations. (<http://www.al.gov.bc.ca/resmgmt/sf/gis/projects.htm>)



FVRD Electoral Area 'G'  
Agricultural Land Use Inventory - 2011

- Forage & Pasture**
- Crop Type**
- Grass
  - Mixed grass / legume
  - Forage corn
- Agricultural Practice**
- Forage
  - Pasture
  - Forage & pasture (managed)
  - Unused (only 1)

- Parcels**
- Survey Status**
- Surveyed
  - Not surveyed
- Agricultural Land Reserve**
- Boundaries ( 2011)
- Municipalities/Electoral Areas**
- Boundaries (2011)
- Indian Reserves**
- Boundaries (2011)



0 0.5 1 1.5 2 Kilometers

FVRD Electoral Area 'G'  
Agricultural Land Use Inventory 2011  
A joint project with Ministry of Agriculture  
and Sustainable Agriculture Management  
and Mission Community Services Society (MCSS).

Map Produced By  
Ministry of Agriculture  
Sustainable Agriculture Management Branch  
Strengthening Farming Program  
1767 Angus Campbell Rd.  
Abbotsford, BC V3G 2M3  
604 556 3001



Data Sources:  
FVRD Electoral Area 'G' parcels provided by  
Fraser Valley Regional District -  
sourced from ICIS in Winter 2010.  
Land Cover captured July - August 2011.

Sept 6, 2013  
Map created at 1:35,000




The Agricultural Land Use Inventory (ALUI) System employs a "windshield" survey method which captures data visible from publicly accessible lands and roads. Where visibility is limited, data may have been interpreted from aerial photography, in combination with local knowledge. This data represents a snapshot in time of land cover and land use on legal parcels. Legal parcel descriptions, land use, and land cover may have changed since the dataset was collected. Using this data to extrapolate farm management practices or environmental impacts from individual parcels is invalid. Please refer to the 2011 FVRD Electoral Area 'G' Land Use Inventory Report for more information on data limitations. (<http://www.al.gov.bc.ca/resmgmt/sf/gis/projects.htm>)



## Berries

-  Blueberries
-  Strawberries (only 2)

## Nursery & tree plantations

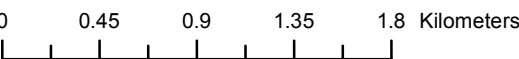
-  Tree plantation (Christmas trees, mixed)
-  Nursery (ornamentals & shrubs, cedar hedging, mixed)
-  Unknown type (only 2)

**Survey Status**

☐ Surveyed

☐ Not surveyed

 Boundaries ( 2011)

 Boundaries (2011) Boundaries (2011)

FVRD Electoral Area G  
Agricultural Land Use Inventory 2011  
A joint project with Ministry of Agriculture  
and Mission Community Services Society (MCSS).

Data Sources:  
FVRD Electoral Area 'G' parcels provided by  
Fraser Valley Regional District -  
sourced from ICIS in Winter 2010.  
Land Cover captured July - August 2011.

Map Produced By  
Ministry of Agriculture  
Sustainable Agriculture Management Branch  
Strengthening Farming Program  
1767 Angus Campbell Rd.  
Abbotsford, BC V3G 2M3  
604 556 3001

Sept 6, 2013  
Map created at 1:35,000

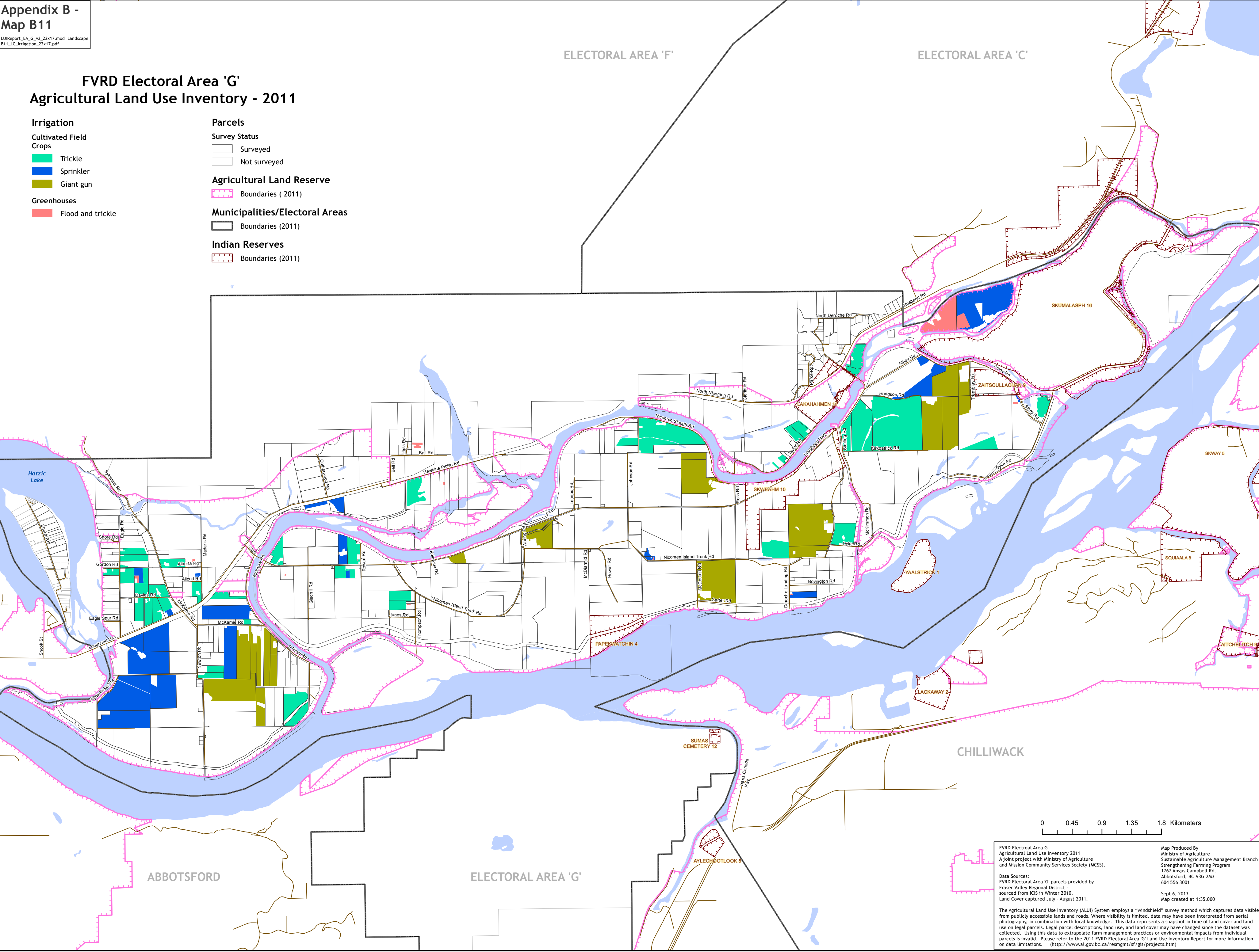
The Agricultural Land Use Inventory (ALUI) System employs a "windshield" survey method which captures data visible from publicly accessible lands and roads. Where visibility is limited, data may have been interpreted from aerial photography, in combination with local knowledge. This data represents a snapshot in time of land cover and land use on legal parcels. Legal parcel descriptions, land use, and land cover may have changed since the dataset was collected. Using this data to extrapolate farm management practices or environmental impacts from individual parcels is invalid. Please refer to the 2011 FYR0 Electoral Area 'G' Land Use Inventory Report for more information on data limitations. (<http://www.al.gov.bc.ca/resmgmt/sf/gis/projects.htm>)



FVRD Electoral Area 'G'  
Agricultural Land Use Inventory - 2011

- Irrigation**
- Cultivated Field Crops**
- Trickle
  - Sprinkler
  - Giant gun
- Greenhouses**
- Flood and trickle

- Parcels**
- Survey Status**
- Surveyed
  - Not surveyed
- Agricultural Land Reserve**
- Boundaries ( 2011)
- Municipalities/Electoral Areas**
- Boundaries (2011)
- Indian Reserves**
- Boundaries (2011)



FVRD Electoral Area 'G'  
Agricultural Land Use Inventory 2011  
A joint project with Ministry of Agriculture  
and Sustainable Agriculture Management  
Branch and Mission Community Services Society (MCSS).

Data Sources:  
FVRD Electoral Area 'G' parcels provided by  
Fraser Valley Regional District -  
sourced from ICIS in Winter 2010.  
Land Cover captured July - August 2011.

Map Produced By  
Ministry of Agriculture  
Sustainable Agriculture Management Branch  
Strengthening Farming Program  
1767 Angus Campbell Rd.  
Abbotsford, BC V3G 2M3  
604 556 3001

Sept 6, 2013  
Map created at 1:35,000

The Agricultural Land Use Inventory (ALUI) System employs a "windshield" survey method which captures data visible from publicly accessible lands and roads. Where visibility is limited, data may have been interpreted from aerial photography, in combination with local knowledge. This data represents a snapshot in time of land cover and land use on legal parcels. Legal parcel descriptions, land use, and land cover may have changed since the dataset was collected. Using this data to extrapolate farm management practices or environmental impacts from individual parcels is invalid. Please refer to the 2011 FVRD Electoral Area 'G' Land Use Inventory Report for more information on data limitations. (<http://www.al.gov.bc.ca/resmgmt/sf/gis/projects.htm>)



FVRD Electoral Area 'G'  
Agricultural Land Use Inventory - 2011

Livestock - All Types (including Equines)

- Very small scale ( < 2 animal unit equivalents )
- Small scale ( 2 -25 animal unit equivalents )
- Medium scale ( 25 -100 animal unit equivalents )
- Large scale ( >100 animal unit equivalents )

Parcels

- Survey Status
- Surveyed
  - Not surveyed

Agricultural Land Reserve

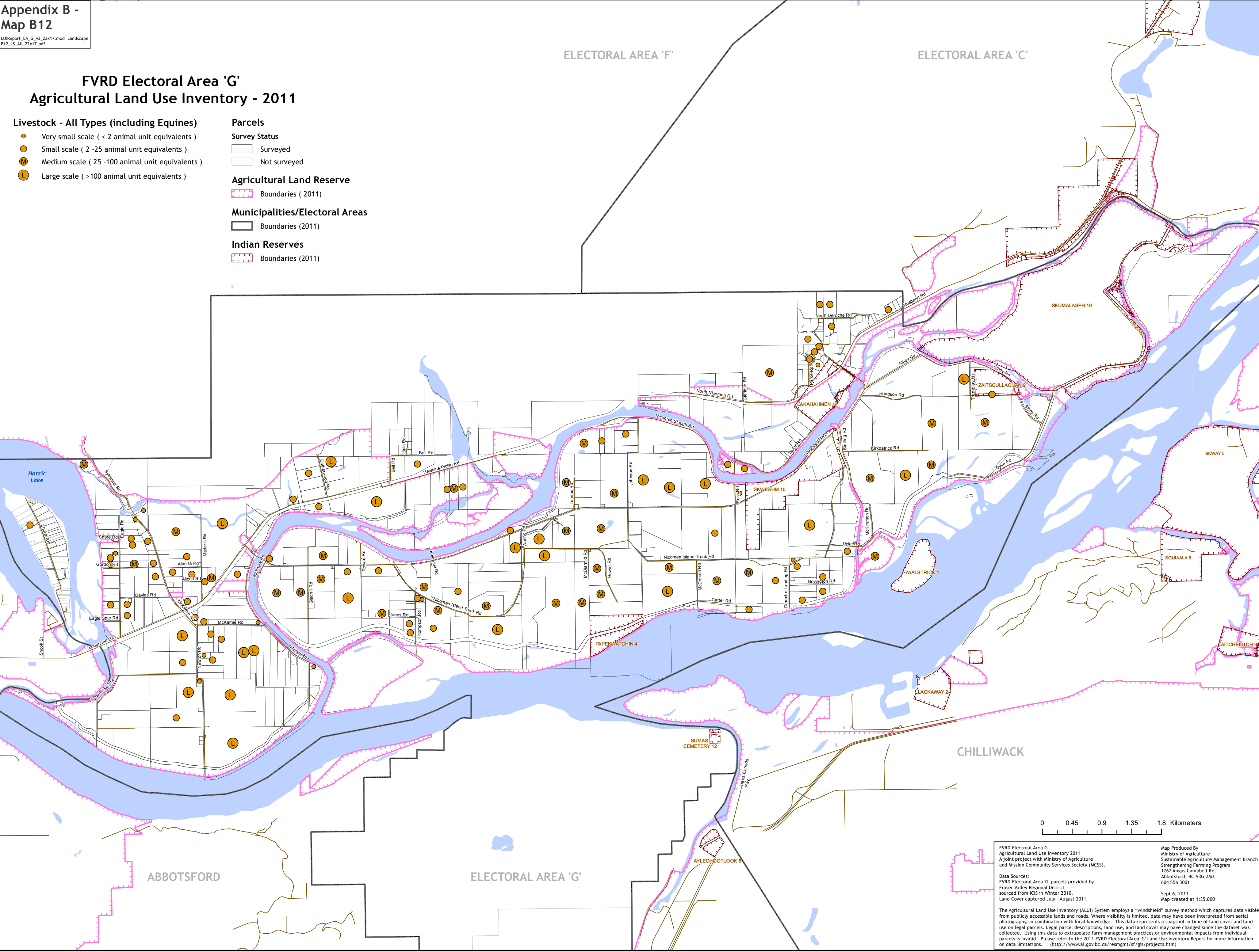
- Boundaries ( 2011 )

Municipalities/Electoral Areas

- Boundaries (2011)

Indian Reserves

- Boundaries (2011)



0 0.45 0.9 1.35 1.8 Kilometers

FVRD Electoral Area 'G'  
Agricultural Land Use Inventory 2011  
A joint project with Ministry of Agriculture  
and Sustainable Agriculture Management  
Branch and Mission Community Services Society (MCSS).

Map Produced By  
Ministry of Agriculture  
Sustainable Agriculture Management Branch  
Strengthening Farming Program  
1767 Angus Campbell Rd.  
Abbotsford, BC V3G 2M3  
604 556 3001

Data Sources:  
FVRD Electoral Area 'G' parcels provided by  
Fraser Valley Regional District -  
sourced from ICIS in Winter 2010.  
Land Cover captured July - August 2011.

Sept 6, 2013  
Map created at 1:35,000

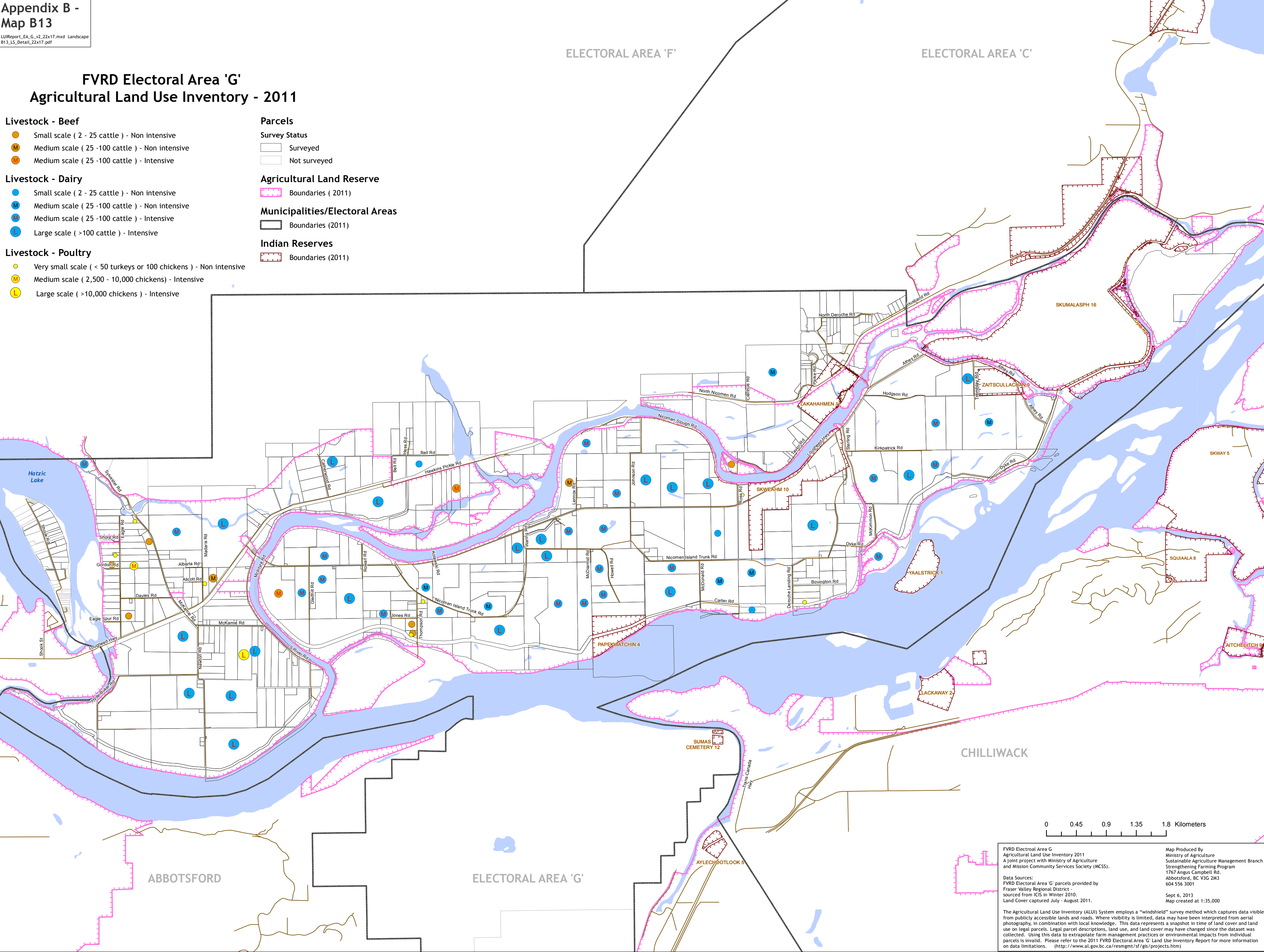
The Agricultural Land Use Inventory (ALUI) System employs a "windshield" survey method which captures data visible from publicly accessible lands and roads. Where visibility is limited, data may have been interpreted from aerial photography, in combination with local knowledge. This data represents a snapshot in time of land cover and land use on legal parcels. Legal parcel descriptions, land use, and land cover may have changed since the dataset was collected. Using this data to extrapolate farm management practices or environmental impacts from individual parcels is invalid. Please refer to the 2011 FVRD Electoral Area 'G' Land Use Inventory Report for more information on data limitations. (<http://www.al.gov.bc.ca/resmgmt/sf/gis/projects.htm>)



FVRD Electoral Area 'G'  
Agricultural Land Use Inventory - 2011

- Livestock - Beef**
- Small scale ( 2 - 25 cattle ) - Non intensive
  - Medium scale ( 25 -100 cattle ) - Non intensive
  - Medium scale ( 25 -100 cattle ) - Intensive
- Livestock - Dairy**
- Small scale ( 2 - 25 cattle ) - Non intensive
  - Medium scale ( 25 -100 cattle ) - Non intensive
  - Medium scale ( 25 -100 cattle ) - Intensive
  - Large scale ( >100 cattle ) - Intensive
- Livestock - Poultry**
- Very small scale ( < 50 turkeys or 100 chickens ) - Non intensive
  - Medium scale ( 2,500 - 10,000 chickens ) - Intensive
  - Large scale ( >10,000 chickens ) - Intensive

- Parcels**
- Survey Status**
- Surveyed
  - Not surveyed
- Agricultural Land Reserve**
- Boundaries ( 2011)
- Municipalities/Electoral Areas**
- Boundaries (2011)
- Indian Reserves**
- Boundaries (2011)



FVRD Electoral Area 'G'  
Agricultural Land Use Inventory 2011  
A joint project with Ministry of Agriculture  
and Mission Community Services Society (MCSS).

Map Produced By  
Ministry of Agriculture  
Sustainable Agriculture Management Branch  
Strengthening Farming Program  
1767 Angus Campbell Rd.  
Abbotsford, BC V3G 2M3  
604 556 3001

Data Sources:  
FVRD Electoral Area 'G' parcels provided by  
Fraser Valley Regional District -  
sourced from ICIS in Winter 2010.  
Land Cover captured July - August 2011.

Sept 6, 2013  
Map created at 1:35,000

The Agricultural Land Use Inventory (ALUI) System employs a "windshield" survey method which captures data visible from publicly accessible lands and roads. Where visibility is limited, data may have been interpreted from aerial photography, in combination with local knowledge. This data represents a snapshot in time of land cover and land use on legal parcels. Legal parcel descriptions, land use, and land cover may have changed since the dataset was collected. Using this data to extrapolate farm management practices or environmental impacts from individual parcels is invalid. Please refer to the 2011 FVRD Electoral Area 'G' Land Use Inventory Report for more information on data limitations. (<http://www.al.gov.bc.ca/resmgmt/sf/gis/projects.htm>)



## Livestock - Equine

- Very small scale ( 1 equine ) - Non intensive
- Small scale ( 2 -25 equines ) - Non intensive

**Survey Status**

☐ Surveyed

☐ Not surveyed

 Boundaries ( 2011)

 Boundaries (2011)

 Boundaries (2011)



Map Produced By  
Ministry of Agriculture  
Sustainable Agriculture Management Branch  
Strengthening Farming Program  
1767 Angus Campbell Rd.  
Abbotsford, BC V3G 2M3  
604 556 3001

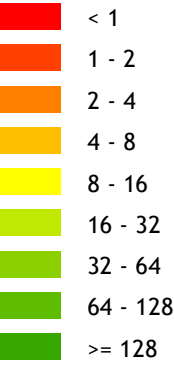
Sept 6, 2013  
Map created at 1:35,000

The Agricultural Land Use Inventory (ALUI) System employs a "windshield" survey method which captures data visible from publicly accessible lands and roads. Where visibility is limited, data may have been interpreted from aerial photography, in combination with local knowledge. This data represents a snapshot in time of land cover and land use on legal parcels. Legal parcel descriptions, land use, and land cover may have changed since the dataset was collected. Using this data to extrapolate farm management practices or environmental impacts from individual parcels is invalid. For more information on the Eastern Shore Area of Critical Environmental Concern Inventory Report for more information on data limitation (<http://www.alov.bc.ca/resmest/sf/sis/projects.html>).

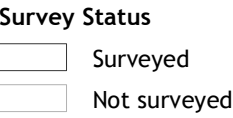


FVRD Electoral Area 'G'  
Agricultural Land Use Inventory - 2011

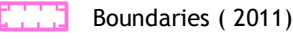
Parcel Size Category (ha)



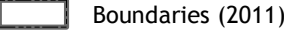
Parcels



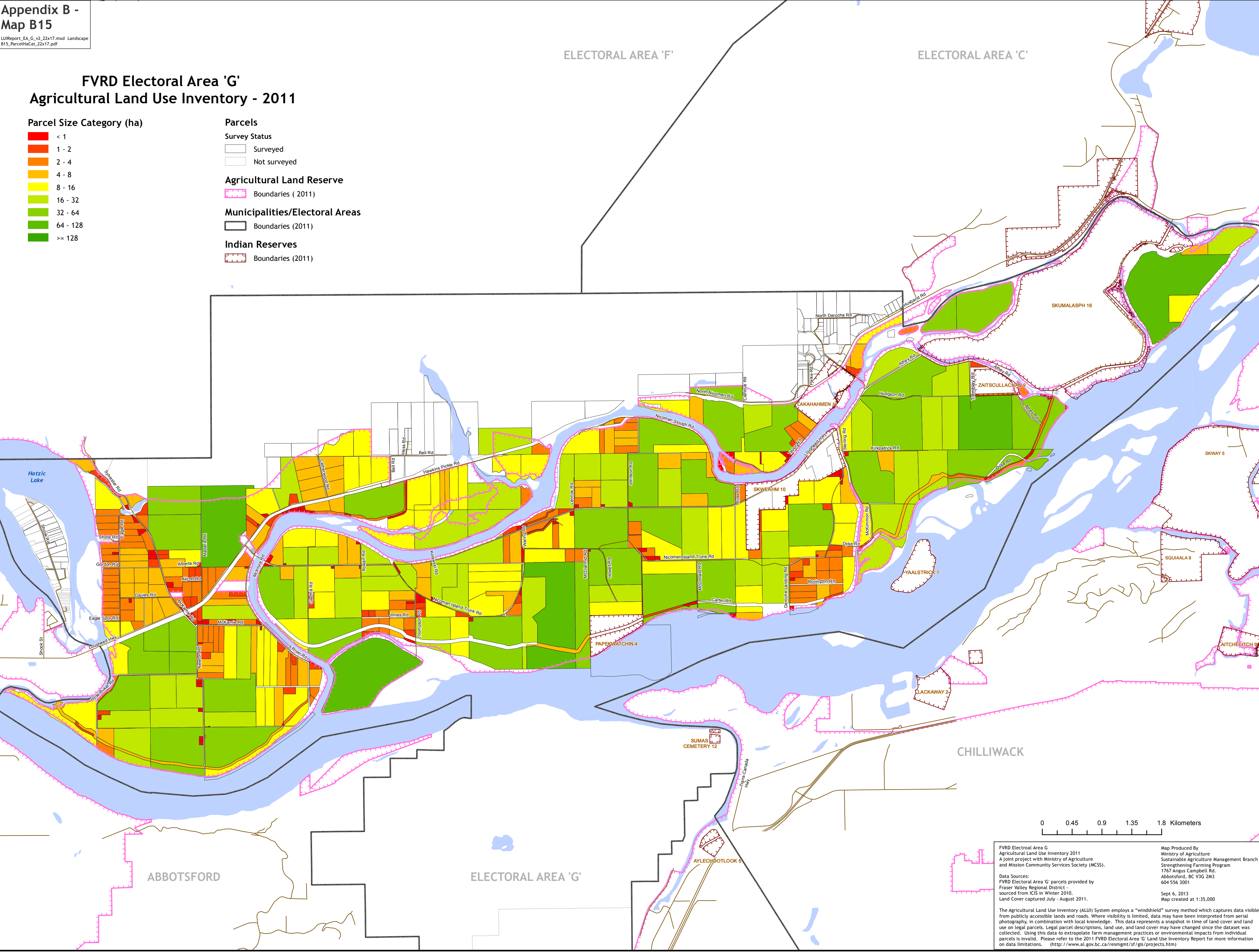
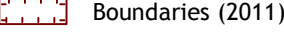
Agricultural Land Reserve



Municipalities/Electoral Areas



Indian Reserves



0 0.45 0.9 1.35 1.8 Kilometers

FVRD Electoral Area 'G'  
Agricultural Land Use Inventory 2011  
A joint project with Ministry of Agriculture  
and Sustainable Agriculture Management Branch  
and Mission Community Services Society (MCSS).

Map Produced By  
Ministry of Agriculture  
Sustainable Agriculture Management Branch  
Strengthening Farming Program  
1767 Angus Campbell Rd.  
Abbotsford, BC V3G 2M3  
604 556 3001

Data Sources:  
FVRD Electoral Area 'G' parcels provided by  
Fraser Valley Regional District -  
sourced from ICIS in Winter 2010.  
Land Cover captured July - August 2011.

Sept 6, 2013  
Map created at 1:35,000

The Agricultural Land Use Inventory (ALUI) System employs a "windshield" survey method which captures data visible from publicly accessible lands and roads. Where visibility is limited, data may have been interpreted from aerial photography, in combination with local knowledge. This data represents a snapshot in time of land cover and land use on legal parcels. Legal parcel descriptions, land use, and land cover may have changed since the dataset was collected. Using this data to extrapolate farm management practices or environmental impacts from individual parcels is invalid. Please refer to the 2011 FVRD Electoral Area 'G' Land Use Inventory Report for more information on data limitations. (<http://www.al.gov.bc.ca/resmgmt/sf/gis/projects.htm>)