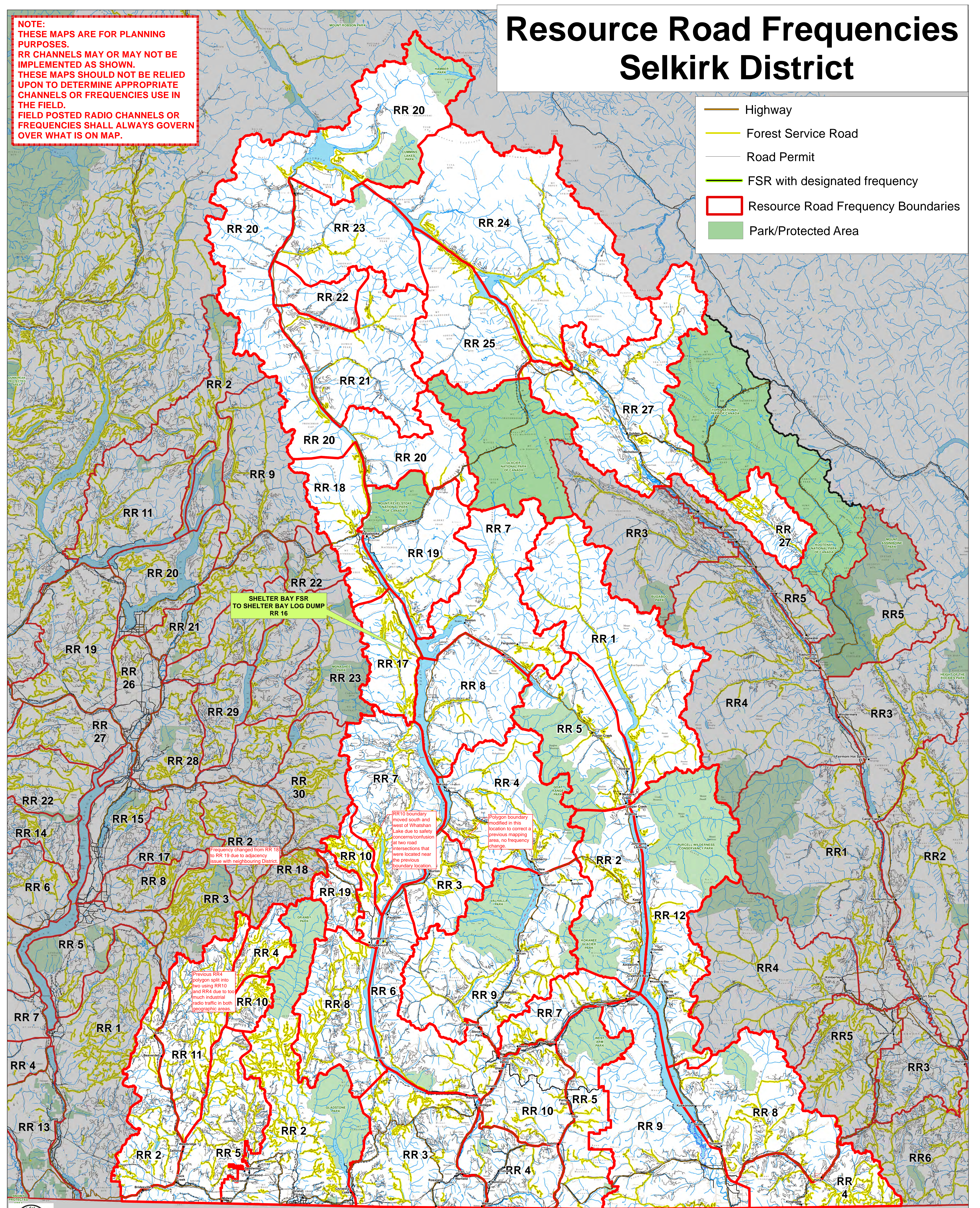


NOTE:
THESE MAPS ARE FOR PLANNING
PURPOSES.
RR CHANNELS MAY OR MAY NOT BE
IMPLEMENTED AS SHOWN.
THESE MAPS SHOULD NOT BE RELIED
UPON TO DETERMINE APPROPRIATE
CHANNELS OR FREQUENCIES USE IN
THE FIELD.
FIELD POSTED RADIO CHANNELS OR
FREQUENCIES SHALL ALWAYS GOVERN
OVER WHAT IS ON MAP.

Resource Road Frequencies Selkirk District

- Highway
- Forest Service Road
- Road Permit
- FSR with designated frequency
- Resource Road Frequency Boundaries
- Park/Protected Area



SHELTER BAY FSR
TO SHELTER BAY LOG DUMP
RR 16

RR10 boundary
moved south and
west of Whatshan
Lake due to safety
concerns/confusion
at two road
intersections that
were located near
the previous
boundary location.

Polygon boundary
modified in this
location to correct a
previous mapping
error, no frequency
change.

Previous RR4
polygon split into
two using RR10
and RR4 due to too
much industrial
radio traffic in both
geographic areas.

Frequency changed from RR 18
to RR 19 due to adjacency
issue with neighbouring District



Scale: 1:75,000
Date: February 14, 2016
Data Date: BC/09
Projection: UTM (NAD83)

0 15 30 60 90 120 Kilometers

