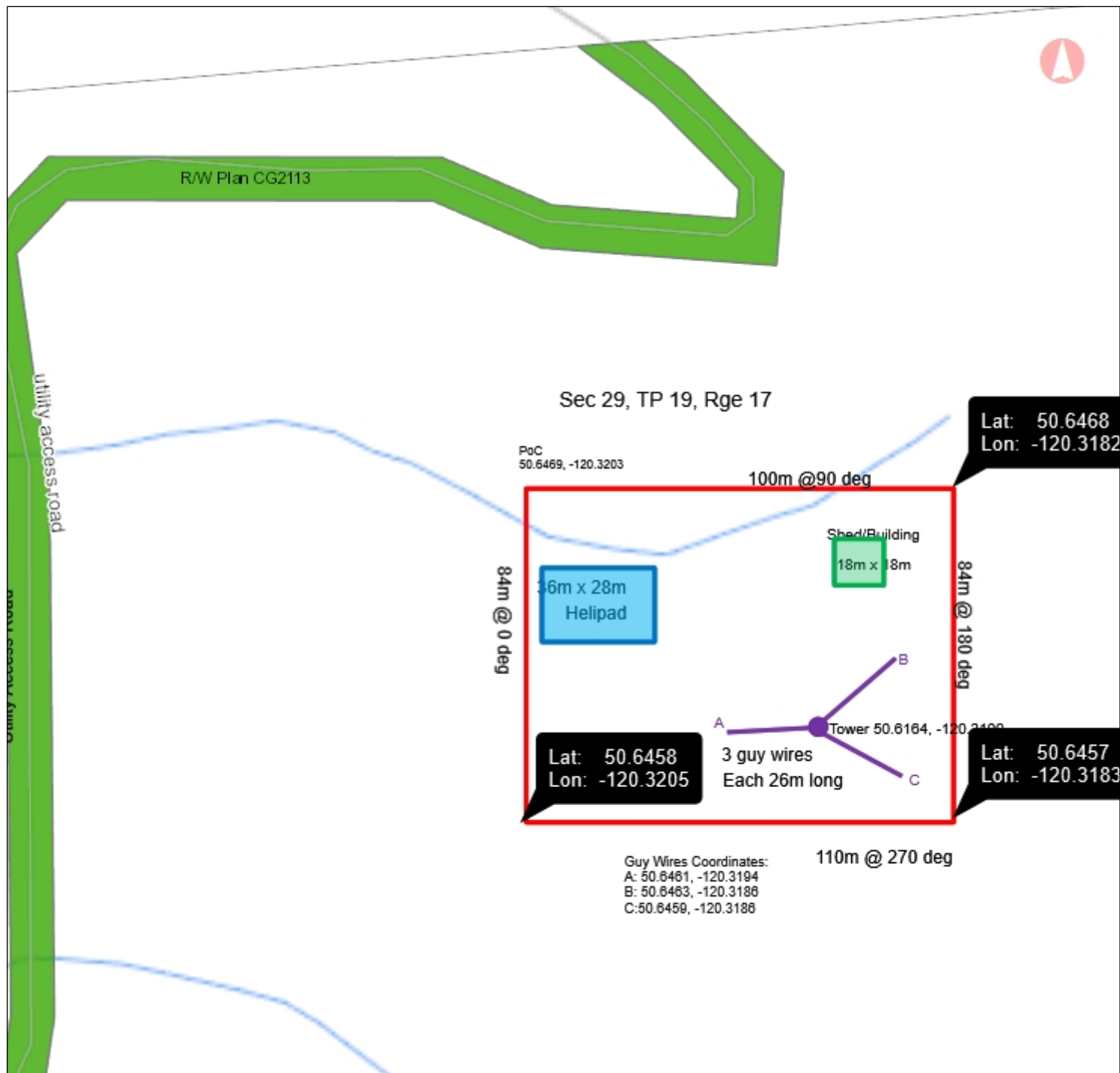


Communication Site

Scroll to view sample Site Plan Map

The '**Communication Site**' **Site Plan** must include:

1. Scale e.g. 1:100 – 1:5,000
2. North arrow
3. The outer boundary of the proposed application area in relation to other legal boundaries, with lengths/dimensions and a point of commencement identified as latitude/longitude or UTM coordinate
4. All proposed and existing [improvements](#) (e.g. buildings, structures, roads, powerlines, culverts, towers, generators, concrete pads, guy wires, utility sheds, helipads, fences, all sub-tenant improvements, etc.) where it is clear which are proposed and which are existing. All improvements must be labeled or listed in a legend, must include coordinates and must show lengths/dimensions
5. Existing man-made or natural [features](#) within and directly surrounding the application area (e.g. waterbody, present natural boundary, height of land, contour lines where possible etc.)
6. Names of subject and adjacent mountain peaks and their peak elevations



Communication Sample

Map Legend

Geographic Names Points -

FEATURE_TYPE

- Abandoned Locality
- ✈ Airfield
- ✈ Airport
- ◆ Anchorage
- Canadian Forces Base
- City
- Community
- + Cone
- + Crag
- + Crags
- Dam
- + Dome

0 0.04 0.08 km

1: 2,000

Copyright/Disclaimer

The material contained in this web site is owned by the Government of British Columbia and protected by copyright law. It may not be reproduced or redistributed without the prior written permission of the Province of British Columbia. To request permission to reproduce all or part of the material on this web site please complete the Copyright Permission Request Form which can be accessed through the Copyright Information Page.

CAUTION: Maps obtained using this site are not designed to assist in navigation. These maps may be generalized and may not reflect current conditions. Uncharted hazards may exist. DO NOT USE THESE MAPS FOR NAVIGATIONAL PURPOSES.

Datum: NAD83

Projection: NAD_1983_BC_Environment_Albers

Key Map of British Columbia

