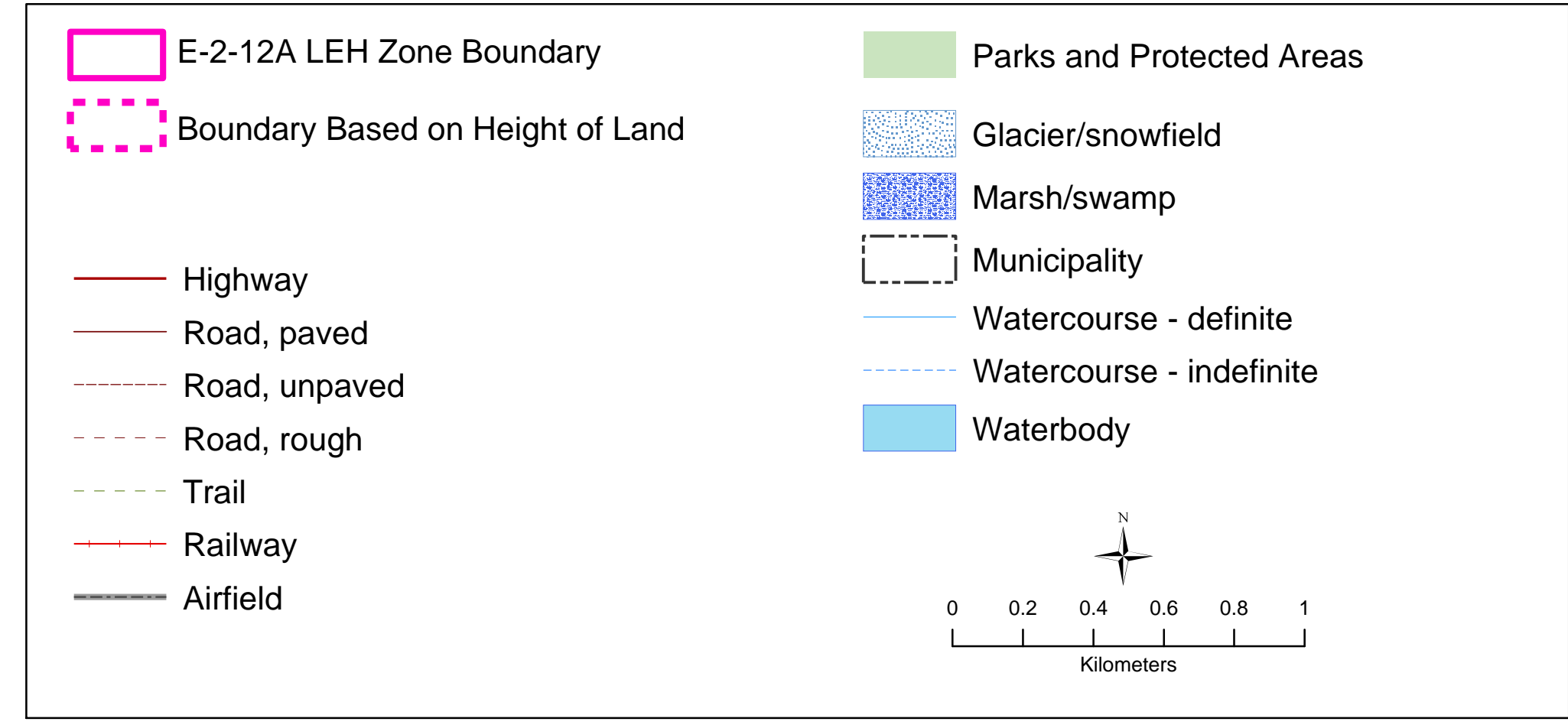
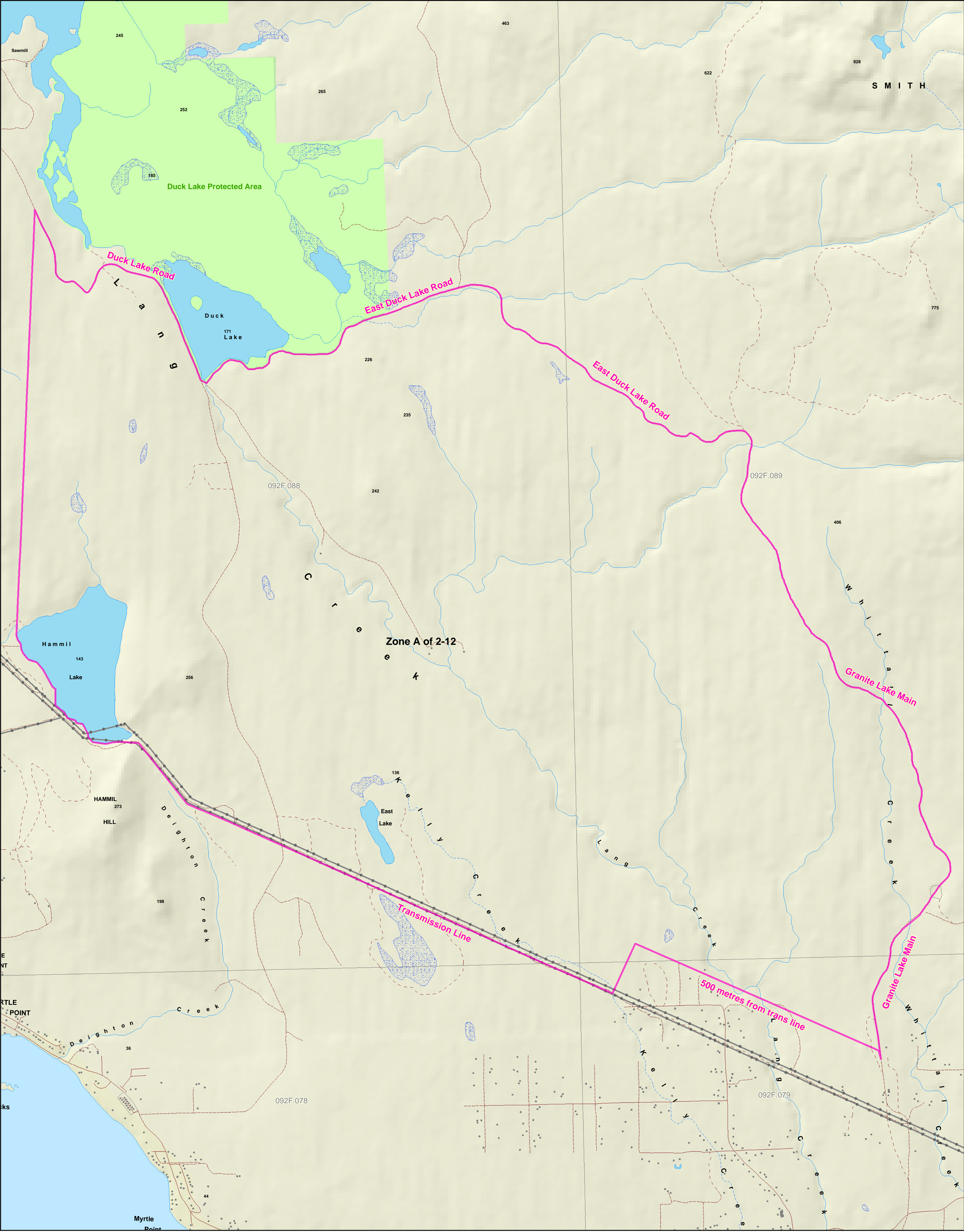


Limited Entry Hunting  
Elk  
2005/2006 ZONE A of 2-12



Produced for:  
**Ministry of Water, Land & Air Protection**  
Fish and Wildlife Recreation and Allocation Branch

---

Produced by:  
  
**Ministry of Sustainable Resource Management**  
Business Solutions Branch

Filepath: clients/wlap/leh/arcmapi/Elk\_ZoneA\_2-12\_Dsize.mxd  
Projection/Datum: Albers Equal Area Conic/NAD 83  
Date Created: 2005, March 08  
Created by: Victoria Service Center, SLS

**Data Sources and Notes**

These maps represent LEH Zones only. For other boundary information including, but not limited to, species closed areas, management unit boundaries, no hunting/shooting areas, and motor vehicle restricted areas, refer to the appropriate regulations.  
Road data is not up-to-date and roads depicted may not exist. New roads from 1995 onward are not shown on the map.

NOTE: All Magneta text denotes what the LEH boundary should be following.

