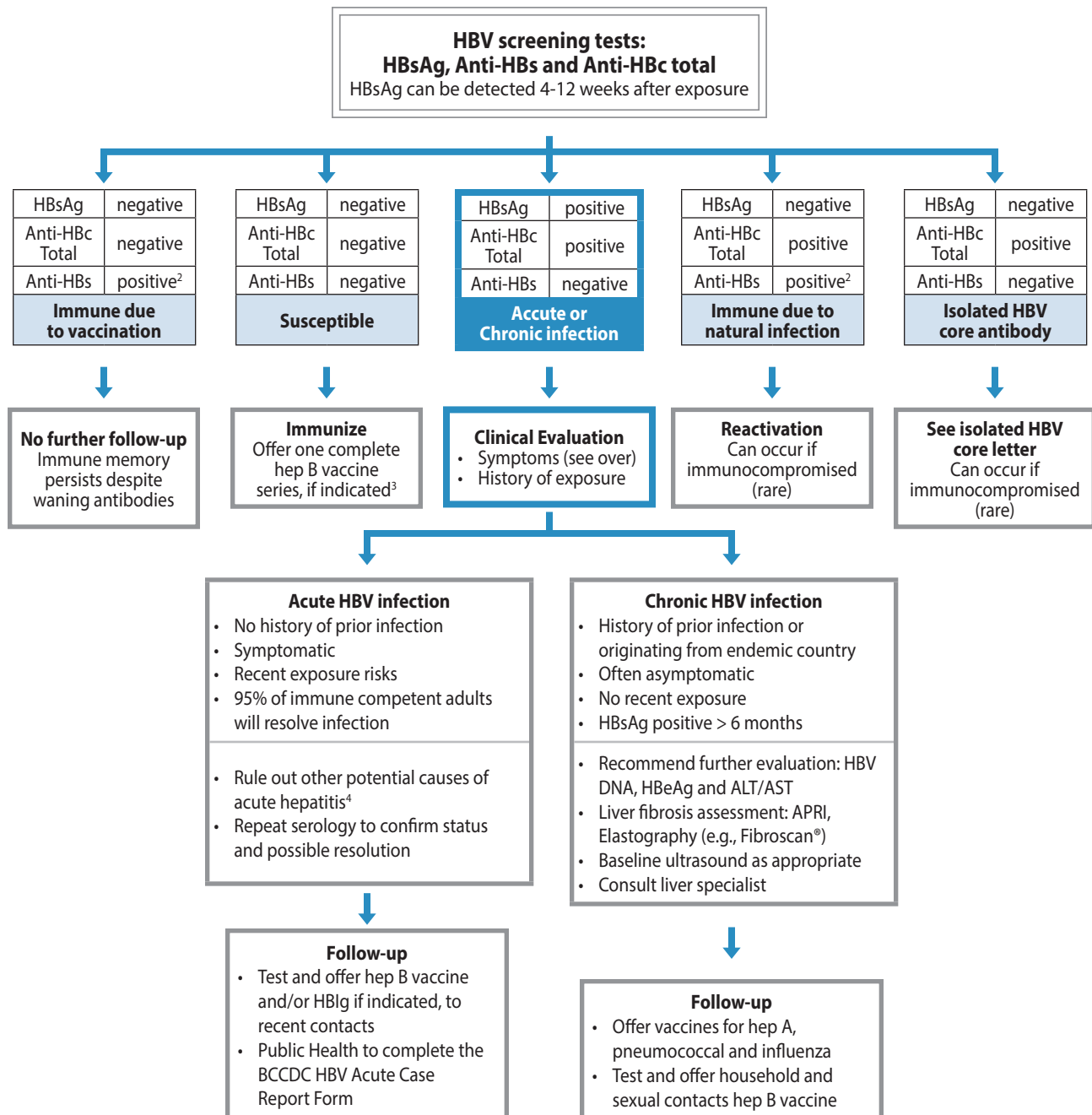




## Appendix 5 – Hepatitis B Testing Guide<sup>1</sup>



<sup>1</sup> BCCDC Hepatitis B Testing Guide (2018). Available from: [www.bccdc.ca/health-professionals/clinical-resources/communicable-disease-control-manual/communicable-disease-control](http://www.bccdc.ca/health-professionals/clinical-resources/communicable-disease-control-manual/communicable-disease-control)

<sup>2</sup> Anti-HBs ≥ 10 IU/L

<sup>3</sup> If prior vaccination history and/or anti-HBs is detectable but <10 IU/L, see the BCCDC Hepatitis B Guidelines and Immunization Manual For post-exposure prophylaxis, see the BCCDC Hepatitis B Guidelines Manual and Blood and Body Fluid Exposure Management Guidelines.

<sup>4</sup> Other infectious causes include Hepatitis A, C, D and E, Cytomegalovirus and Epstein-Barr Virus. Non-infectious causes include hepatotoxic drugs, autoimmune hepatitis, Wilson's disease, vascular causes, or other pre-existing chronic liver diseases. Screen for HIV infection.