

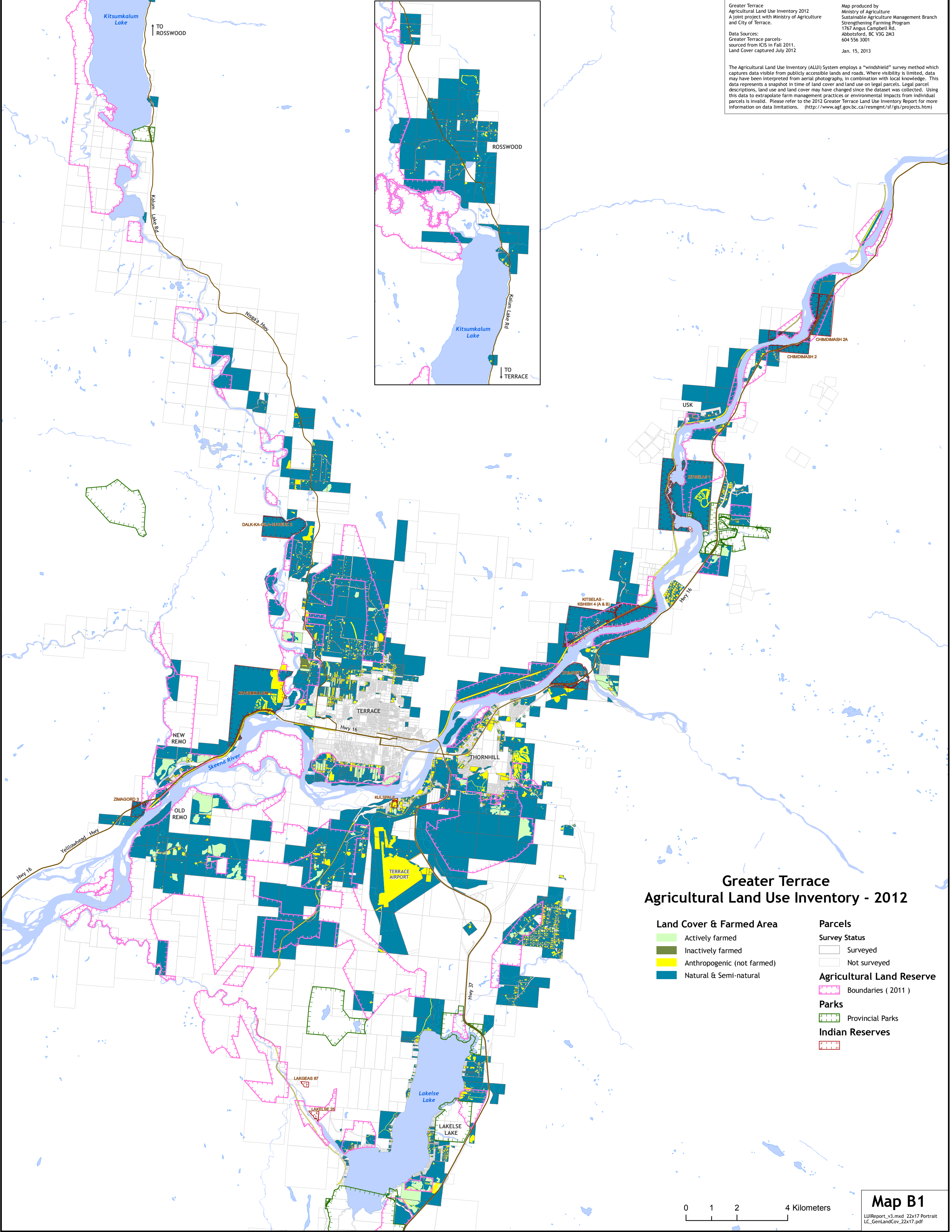
Greater Terrace
Agricultural Land Use Inventory 2012
A joint project with Ministry of Agriculture
and City of Terrace.

Data Sources:
Greater Terrace parcels-
sourced from ICIS in Fall 2011.
Land Cover captured July 2012

Map produced by
Ministry of Agriculture
Sustainable Agriculture Management Branch
Strengthening Farming Program
1767 Angus Campbell Rd.
Abbotsford, BC V3G 2M3
604 556 3001

Jan. 15, 2013

The Agricultural Land Use Inventory (ALUI) System employs a "windshield" survey method which captures data visible from publicly accessible lands and roads. Where visibility is limited, data may have been interpreted from aerial photography, in combination with local knowledge. This data represents a snapshot in time of land cover and land use on legal parcels. Legal parcel descriptions, land use and land cover may have changed since the dataset was collected. Using this data to extrapolate farm management practices or environmental impacts from individual parcels is invalid. Please refer to the 2012 Greater Terrace Land Use Inventory Report for more information on data limitations. (<http://www.agf.gov.bc.ca/resmgmt/sf/gis/projects.htm>)



Greater Terrace Agricultural Land Use Inventory - 2012

- Land Cover & Farmed Area**

 - Actively farmed
 - Inactively farmed
 - Anthropogenic (not farmed)
 - Natural & Semi-natural
- Parcels**

Survey Status

 - Surveyed
 - Not surveyed

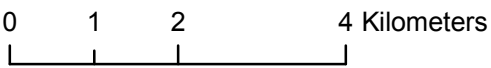
Agricultural Land Reserve

 - Boundaries (2011)

Parks

 - Provincial Parks

Indian Reserves



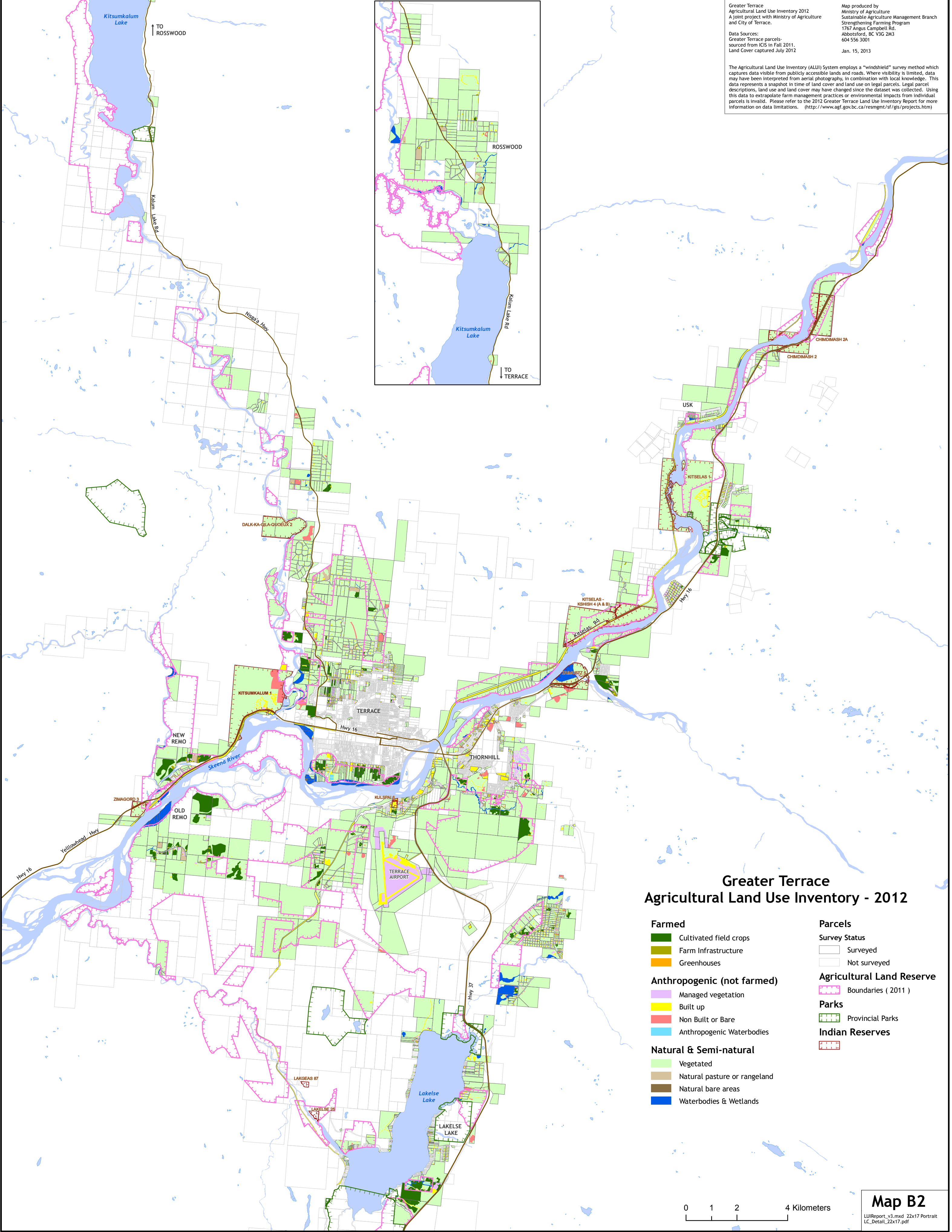
Greater Terrace
Agricultural Land Use Inventory 2012
A joint project with Ministry of Agriculture
and City of Terrace.

Data Sources:
Greater Terrace parcels-
sourced from ICIS in Fall 2011.
Land Cover captured July 2012

Map produced by
Ministry of Agriculture
Sustainable Agriculture Management Branch
Strengthening Farming Program
1767 Angus Campbell Rd.
Abbotsford, BC V3G 2M3
604 556 3001

Jan. 15, 2013

The Agricultural Land Use Inventory (ALUI) System employs a "windshield" survey method which captures data visible from publicly accessible lands and roads. Where visibility is limited, data may have been interpreted from aerial photography, in combination with local knowledge. This data represents a snapshot in time of land cover and land use on legal parcels. Legal parcel descriptions, land use and land cover may have changed since the dataset was collected. Using this data to extrapolate farm management practices or environmental impacts from individual parcels is invalid. Please refer to the 2012 Greater Terrace Land Use Inventory Report for more information on data limitations. (<http://www.agf.gov.bc.ca/resmgmt/sf/gis/projects.htm>)



Greater Terrace
Agricultural Land Use Inventory - 2012

- Farmed**
 - Cultivated field crops
 - Farm Infrastructure
 - Greenhouses

Anthropogenic (not farmed)
 - Managed vegetation
 - Built up
 - Non Built or Bare
 - Anthropogenic Waterbodies

Natural & Semi-natural
 - Vegetated
 - Natural pasture or rangeland
 - Natural bare areas
 - Waterbodies & Wetlands
- Parcels**
 - Survey Status
 - Surveyed
 - Not surveyed

Agricultural Land Reserve
 - Boundaries (2011)

Parks
 - Provincial Parks

Indian Reserves
 -

0 1 2 4 Kilometers

Map B2
LUIReport_v3.mxd 22x17 Portrait
LC_Detail_22x17.pdf

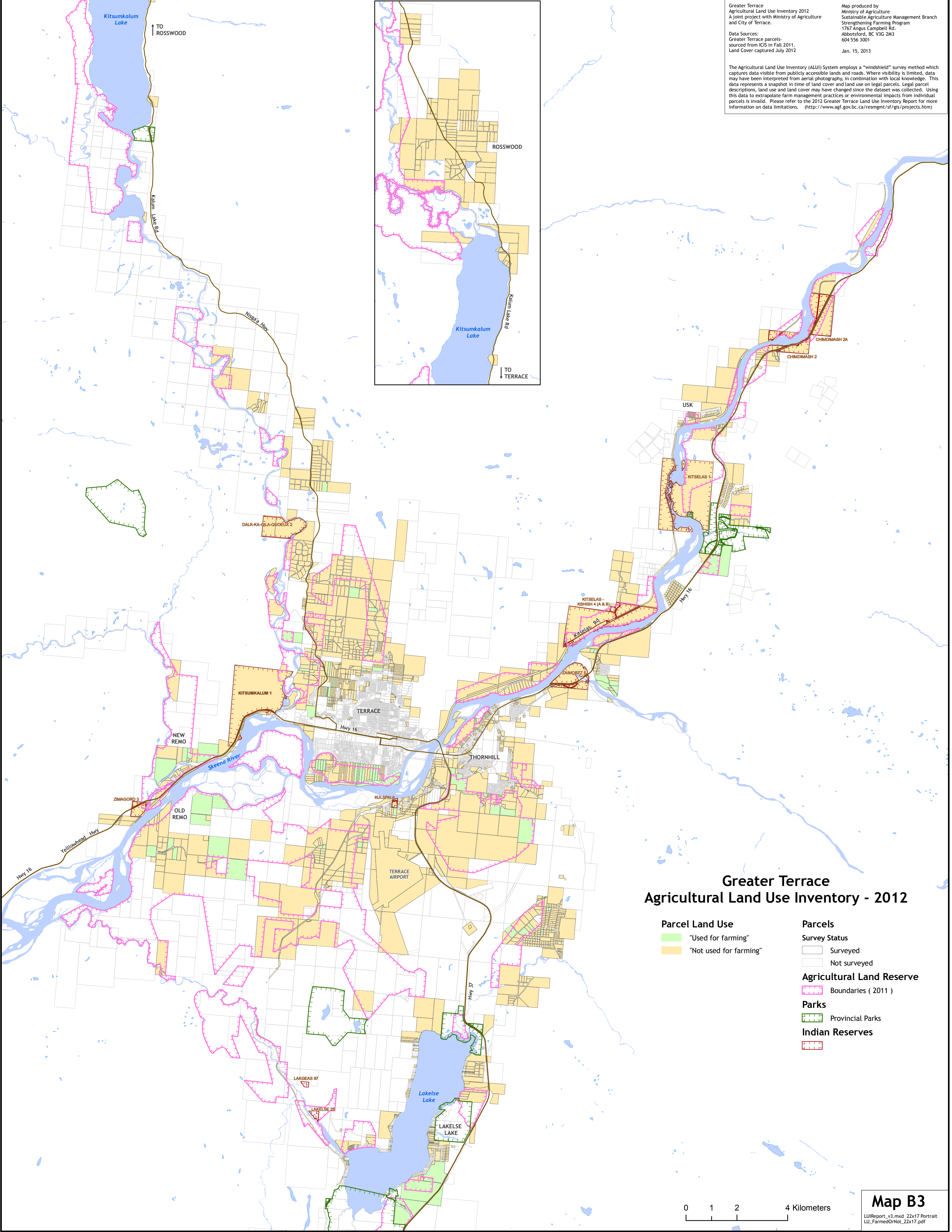
Greater Terrace
Agricultural Land Use Inventory 2012
A joint project with Ministry of Agriculture
and City of Terrace.

Data Sources:
Greater Terrace parcels-
sourced from ICIS in Fall 2011.
Land Cover captured July 2012

Map produced by
Ministry of Agriculture
Sustainable Agriculture Management Branch
Strengthening Farming Program
1767 Angus Campbell Rd.
Abbotsford, BC V3G 2M3
604 556 3001

Jan. 15, 2013

The Agricultural Land Use Inventory (ALUI) System employs a "windshield" survey method which captures data visible from publicly accessible lands and roads. Where visibility is limited, data may have been interpreted from aerial photography, in combination with local knowledge. This data represents a snapshot in time of land cover and land use on legal parcels. Legal parcel descriptions, land use and land cover may have changed since the dataset was collected. Using this data to extrapolate farm management practices or environmental impacts from individual parcels is invalid. Please refer to the 2012 Greater Terrace Land Use Inventory Report for more information on data limitations. (<http://www.agf.gov.bc.ca/resmgmt/sf/gis/projects.htm>)



Greater Terrace Agricultural Land Use Inventory - 2012

- Parcel Land Use

Green

"Used for farming"

Yellow

"Not used for farming"
- Parcels

Survey Status

Grey outline

Surveyed

White outline

Not surveyed
- Agricultural Land Reserve

Pink dashed line

Boundaries (2011)
- Parks

Green dashed line

Provincial Parks
- Indian Reserves

Red dashed line

0 1 2 4 Kilometers

Map B3
LUReport_v3.mxd 22x17 Portrait
LU_FarmedOrNot_22x17.pdf

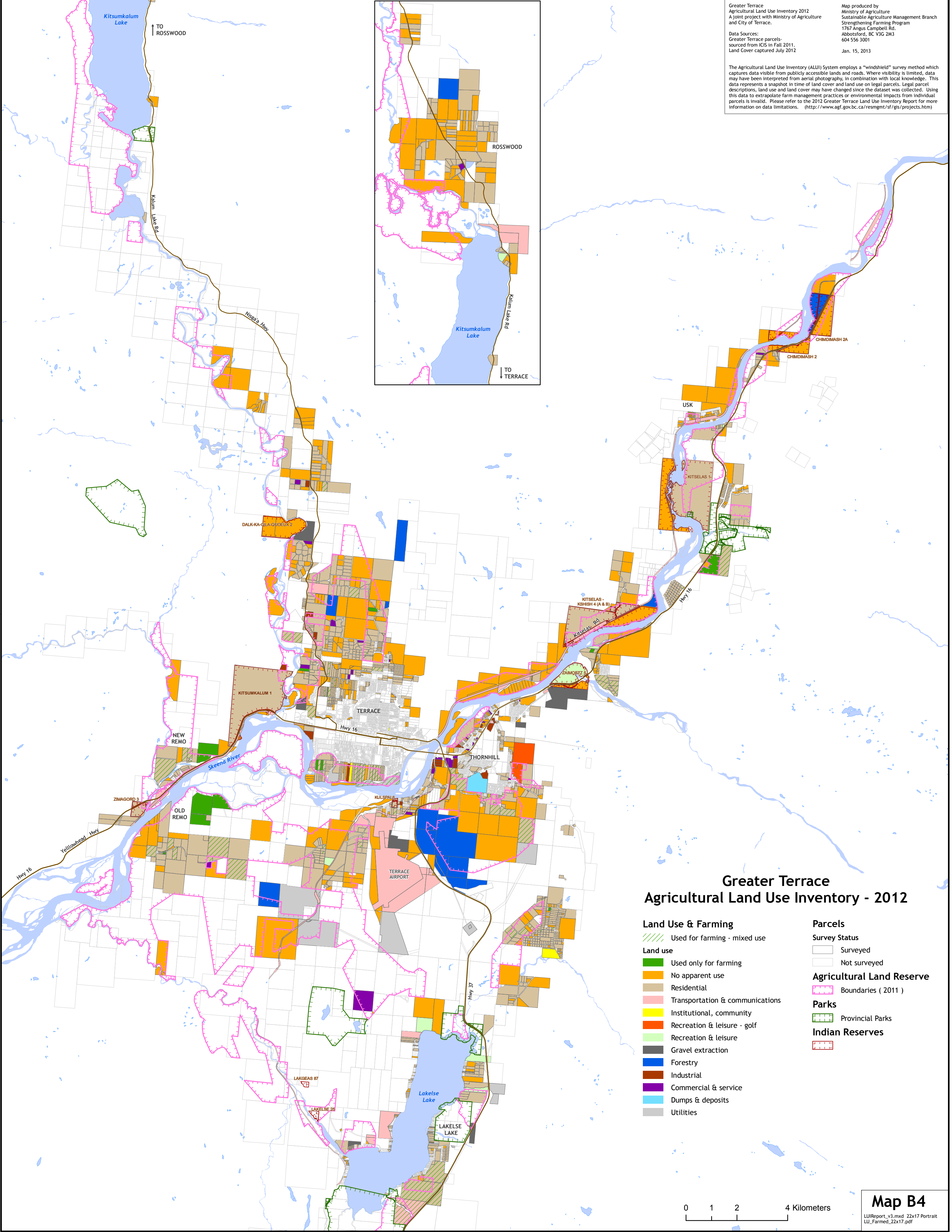
Greater Terrace
Agricultural Land Use Inventory 2012
A joint project with Ministry of Agriculture
and City of Terrace.

Data Sources:
Greater Terrace parcels-
sourced from ICIS in Fall 2011.
Land Cover captured July 2012

Map produced by
Ministry of Agriculture
Sustainable Agriculture Management Branch
Strengthening Farming Program
1767 Angus Campbell Rd.
Abbotsford, BC V3G 2M3
604 556 3001

Jan. 15, 2013

The Agricultural Land Use Inventory (ALUI) System employs a "windshield" survey method which captures data visible from publicly accessible lands and roads. Where visibility is limited, data may have been interpreted from aerial photography, in combination with local knowledge. This data represents a snapshot in time of land cover and land use on legal parcels. Legal parcel descriptions, land use and land cover may have changed since the dataset was collected. Using this data to extrapolate farm management practices or environmental impacts from individual parcels is invalid. Please refer to the 2012 Greater Terrace Land Use Inventory Report for more information on data limitations. (<http://www.agf.gov.bc.ca/resmgmt/sf/gis/projects.htm>)



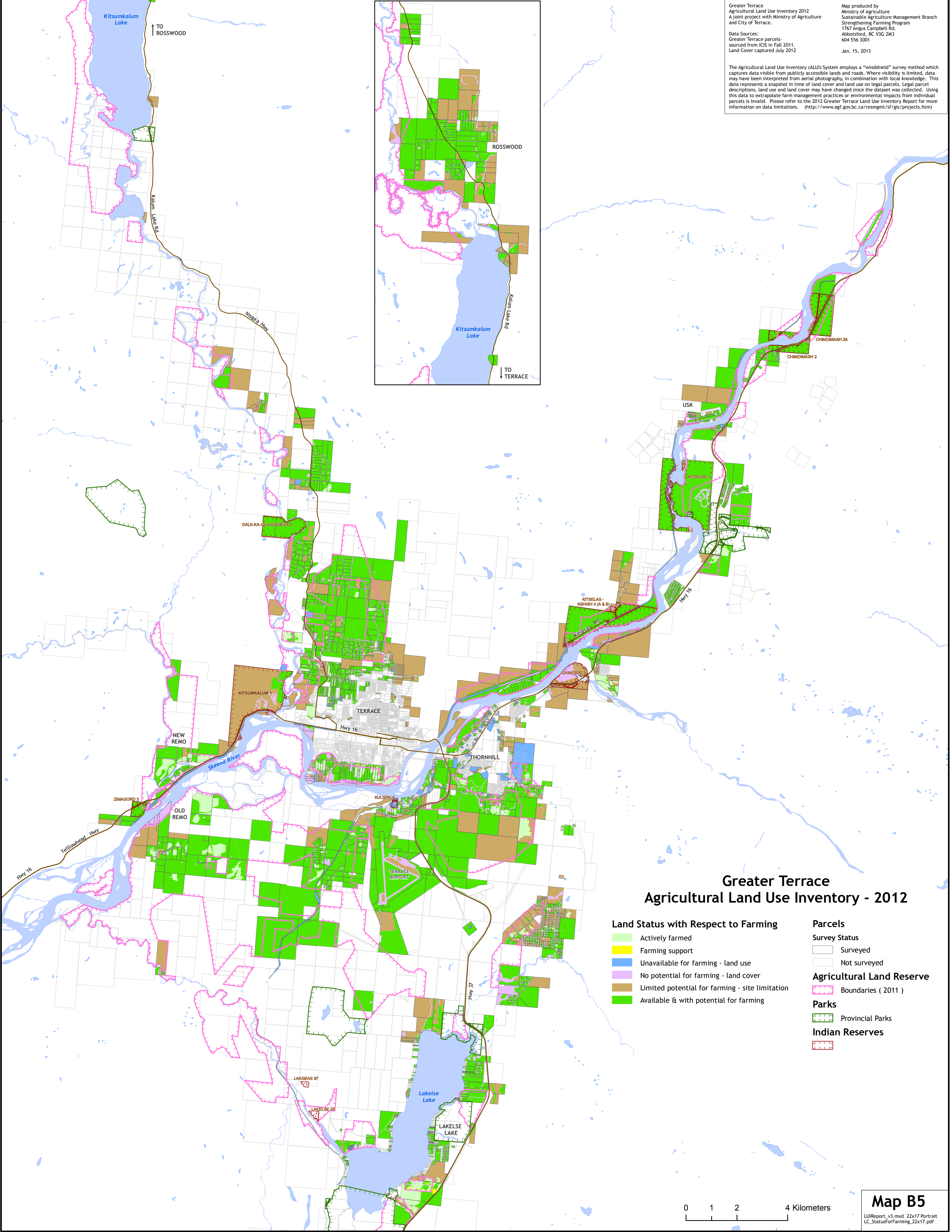
Greater Terrace
Agricultural Land Use Inventory 2012
A joint project with Ministry of Agriculture
and City of Terrace.

Data Sources:
Greater Terrace parcels-
sourced from ICIS in Fall 2011.
Land Cover captured July 2012

Map produced by
Ministry of Agriculture
Sustainable Agriculture Management Branch
Strengthening Farming Program
1767 Angus Campbell Rd.
Abbotsford, BC V3G 2M3
604 556 3001

Jan. 15, 2013

The Agricultural Land Use Inventory (ALUI) System employs a "windshield" survey method which captures data visible from publicly accessible lands and roads. Where visibility is limited, data may have been interpreted from aerial photography, in combination with local knowledge. This data represents a snapshot in time of land cover and land use on legal parcels. Legal parcel descriptions, land use and land cover may have changed since the dataset was collected. Using this data to extrapolate farm management practices or environmental impacts from individual parcels is invalid. Please refer to the 2012 Greater Terrace Land Use Inventory Report for more information on data limitations. (<http://www.agf.gov.bc.ca/resmgmt/sf/gis/projects.htm>)



Greater Terrace
Agricultural Land Use Inventory - 2012

- Land Status with Respect to Farming

 - Actively farmed
 - Farming support
 - Unavailable for farming - land use
 - No potential for farming - land cover
 - Limited potential for farming - site limitation
 - Available & with potential for farming
- Parcels

Survey Status

 - Surveyed
 - Not surveyed

Agricultural Land Reserve

 - Boundaries (2011)

Parks

 - Provincial Parks

Indian Reserves

 -

0 1 2 4 Kilometers

Map B5
LUIReport_v3.mxd 22x17 Portrait
LC_StatusForFarming_22x17.pdf

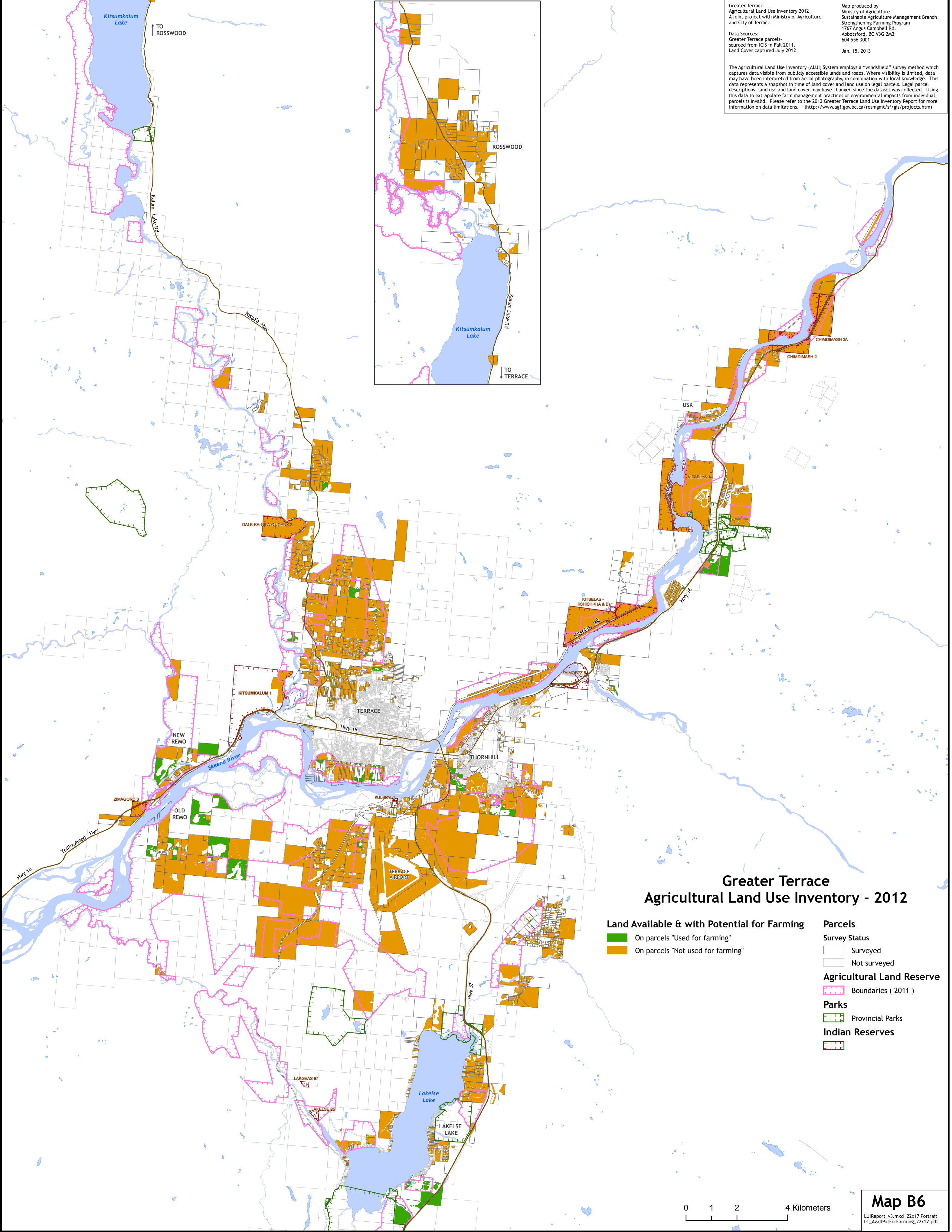
Greater Terrace
Agricultural Land Use Inventory 2012
A joint project with Ministry of Agriculture
and City of Terrace.

Data Sources:
Greater Terrace parcels-
sourced from ICIS in Fall 2011.
Land Cover captured July 2012

Map produced by
Ministry of Agriculture
Sustainable Agriculture Management Branch
Strengthening Farming Program
1767 Angus Campbell Rd.
Abbotsford, BC V3G 2M3
604 556 3001

Jan. 15, 2013

The Agricultural Land Use Inventory (ALUI) System employs a "windshield" survey method which captures data visible from publicly accessible lands and roads. Where visibility is limited, data may have been interpreted from aerial photography, in combination with local knowledge. This data represents a snapshot in time of land cover and land use on legal parcels. Legal parcel descriptions, land use and land cover may have changed since the dataset was collected. Using this data to extrapolate farm management practices or environmental impacts from individual parcels is invalid. Please refer to the 2012 Greater Terrace Land Use Inventory Report for more information on data limitations. (<http://www.agf.gov.bc.ca/resmgmt/sf/gis/projects.htm>)



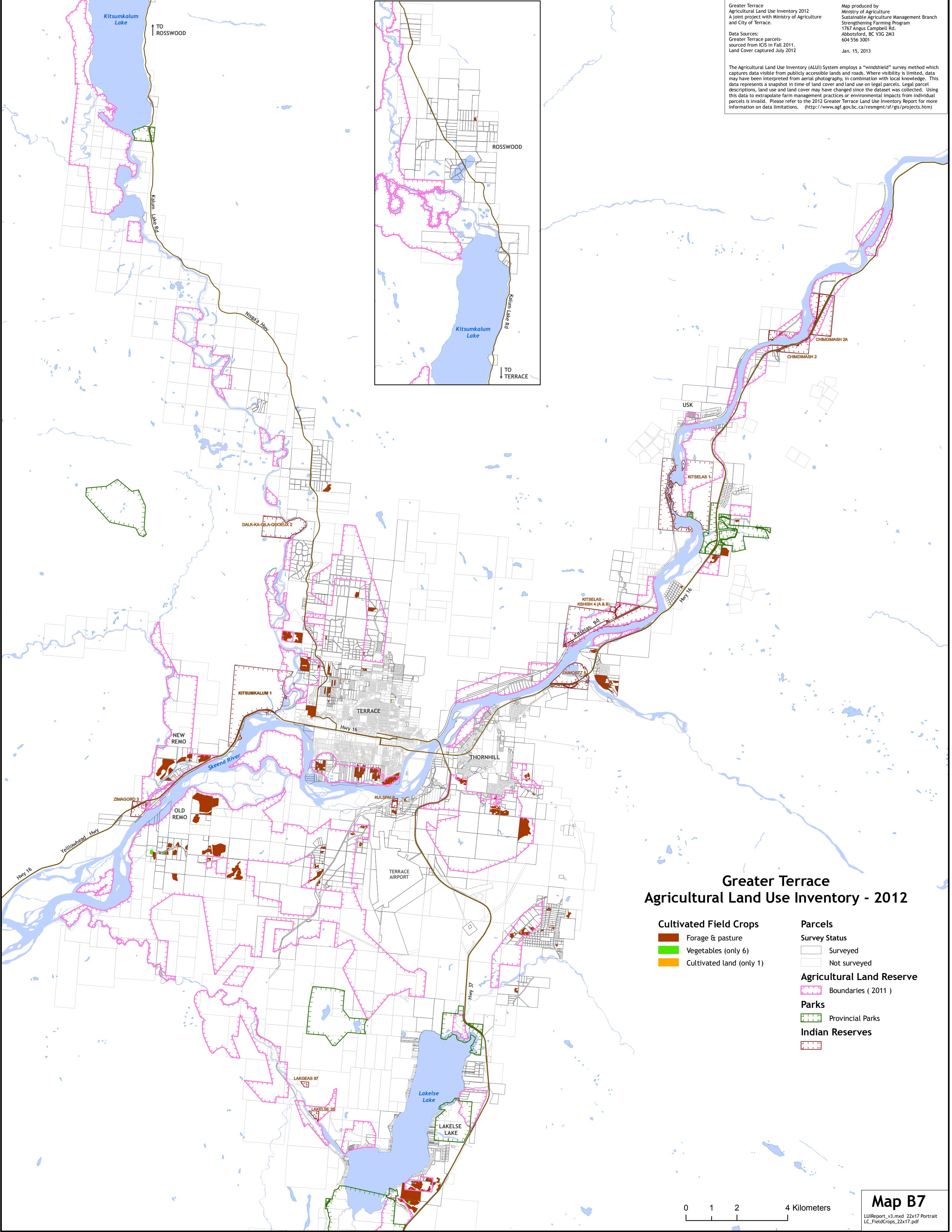
Greater Terrace
Agricultural Land Use Inventory 2012
A joint project with Ministry of Agriculture
and City of Terrace.

Data Sources:
Greater Terrace parcels-
sourced from ICIS in Fall 2011.
Land Cover captured July 2012

Map produced by
Ministry of Agriculture
Sustainable Agriculture Management Branch
Strengthening Farming Program
1767 Angus Campbell Rd.
Abbotsford, BC V3G 2M3
604 556 3001

Jan. 15, 2013

The Agricultural Land Use Inventory (ALUI) System employs a "windshield" survey method which captures data visible from publicly accessible lands and roads. Where visibility is limited, data may have been interpreted from aerial photography, in combination with local knowledge. This data represents a snapshot in time of land cover and land use on legal parcels. Legal parcel descriptions, land use and land cover may have changed since the dataset was collected. Using this data to extrapolate farm management practices or environmental impacts from individual parcels is invalid. Please refer to the 2012 Greater Terrace Land Use Inventory Report for more information on data limitations. (<http://www.agf.gov.bc.ca/resmgmt/sf/gis/projects.htm>)



Greater Terrace
Agricultural Land Use Inventory - 2012

- Cultivated Field Crops

Forage & pasture

Vegetables (only 6)

Cultivated land (only 1)
- Parcels

Survey Status

Surveyed

Not surveyed

Agricultural Land Reserve

Boundaries (2011)

Parks

Provincial Parks

Indian Reserves
- 0 1 2 4 Kilometers
- Map B7
LUIReport_v3.mxd 22x17 Portrait
LC_FieldCrops_22x17.pdf
- Appendix B

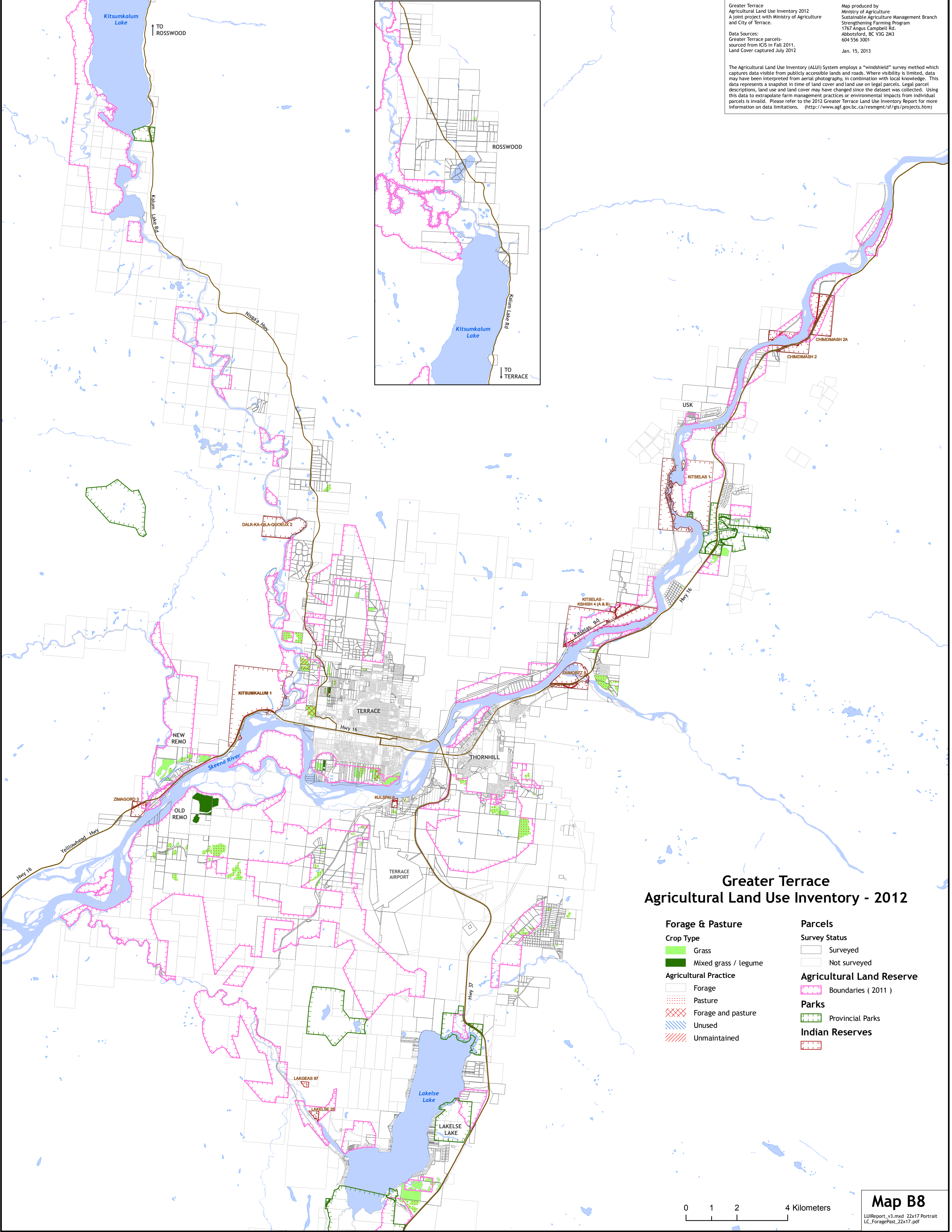
Greater Terrace
Agricultural Land Use Inventory 2012
A joint project with Ministry of Agriculture
and City of Terrace.

Data Sources:
Greater Terrace parcels-
sourced from ICIS in Fall 2011.
Land Cover captured July 2012

Map produced by
Ministry of Agriculture
Sustainable Agriculture Management Branch
Strengthening Farming Program
1767 Angus Campbell Rd.
Abbotsford, BC V3G 2M3
604 556 3001

Jan. 15, 2013

The Agricultural Land Use Inventory (ALUI) System employs a "windshield" survey method which captures data visible from publicly accessible lands and roads. Where visibility is limited, data may have been interpreted from aerial photography, in combination with local knowledge. This data represents a snapshot in time of land cover and land use on legal parcels. Legal parcel descriptions, land use and land cover may have changed since the dataset was collected. Using this data to extrapolate farm management practices or environmental impacts from individual parcels is invalid. Please refer to the 2012 Greater Terrace Land Use Inventory Report for more information on data limitations. (<http://www.agf.gov.bc.ca/resmgmt/sf/gis/projects.htm>)



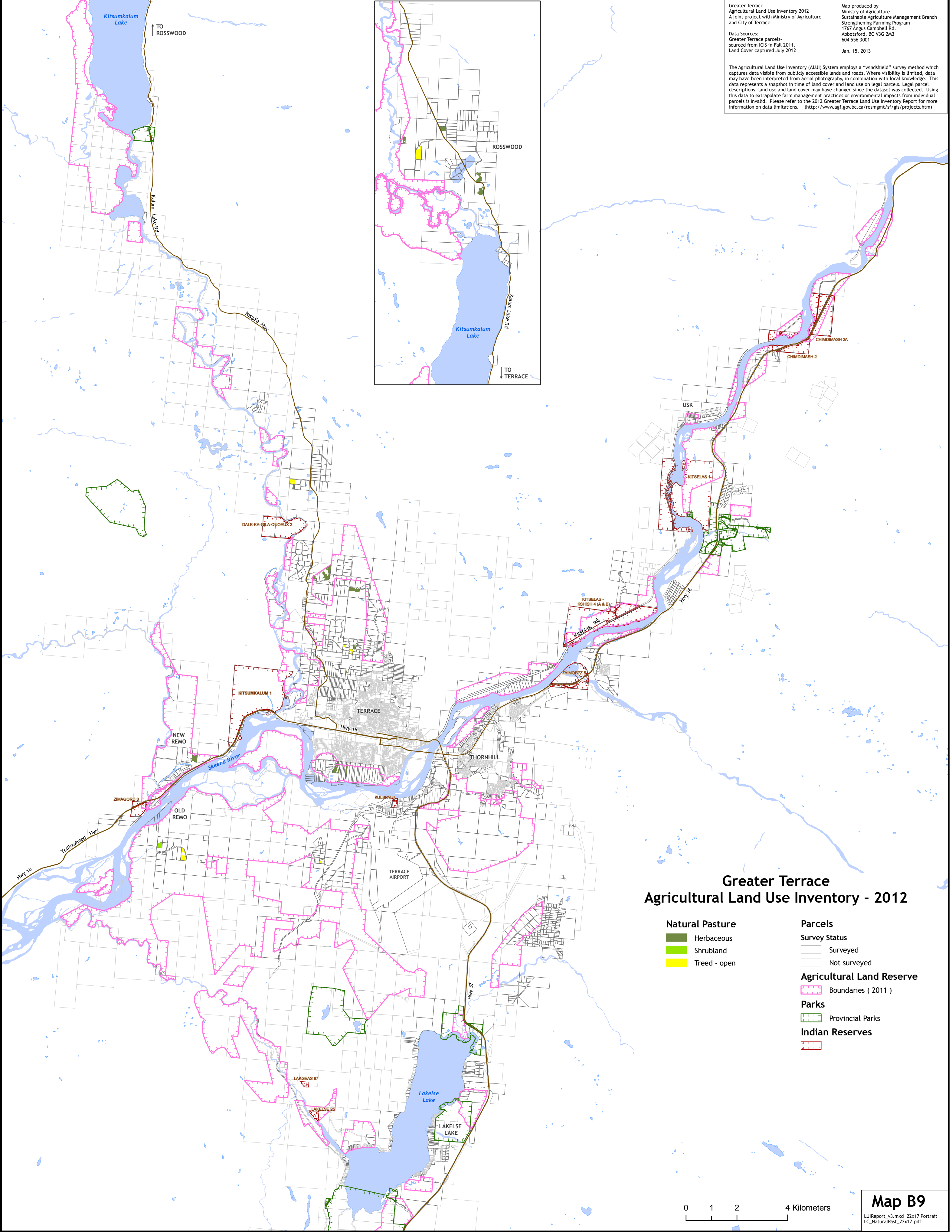
Greater Terrace
Agricultural Land Use Inventory 2012
A joint project with Ministry of Agriculture
and City of Terrace.

Data Sources:
Greater Terrace parcels-
sourced from ICIS in Fall 2011.
Land Cover captured July 2012

Map produced by
Ministry of Agriculture
Sustainable Agriculture Management Branch
Strengthening Farming Program
1767 Angus Campbell Rd.
Abbotsford, BC V3G 2M3
604 556 3001

Jan. 15, 2013

The Agricultural Land Use Inventory (ALUI) System employs a "windshield" survey method which captures data visible from publicly accessible lands and roads. Where visibility is limited, data may have been interpreted from aerial photography, in combination with local knowledge. This data represents a snapshot in time of land cover and land use on legal parcels. Legal parcel descriptions, land use and land cover may have changed since the dataset was collected. Using this data to extrapolate farm management practices or environmental impacts from individual parcels is invalid. Please refer to the 2012 Greater Terrace Land Use Inventory Report for more information on data limitations. (<http://www.agf.gov.bc.ca/resmgmt/sf/gis/projects.htm>)



Greater Terrace
Agricultural Land Use Inventory - 2012

- Natural Pasture

Herbaceous

Shrubland

Treed - open
- Parcels

Survey Status

Surveyed

Not surveyed
- Agricultural Land Reserve

Boundaries (2011)
- Parks

Provincial Parks
- Indian Reserves

0 1 2 4 Kilometers

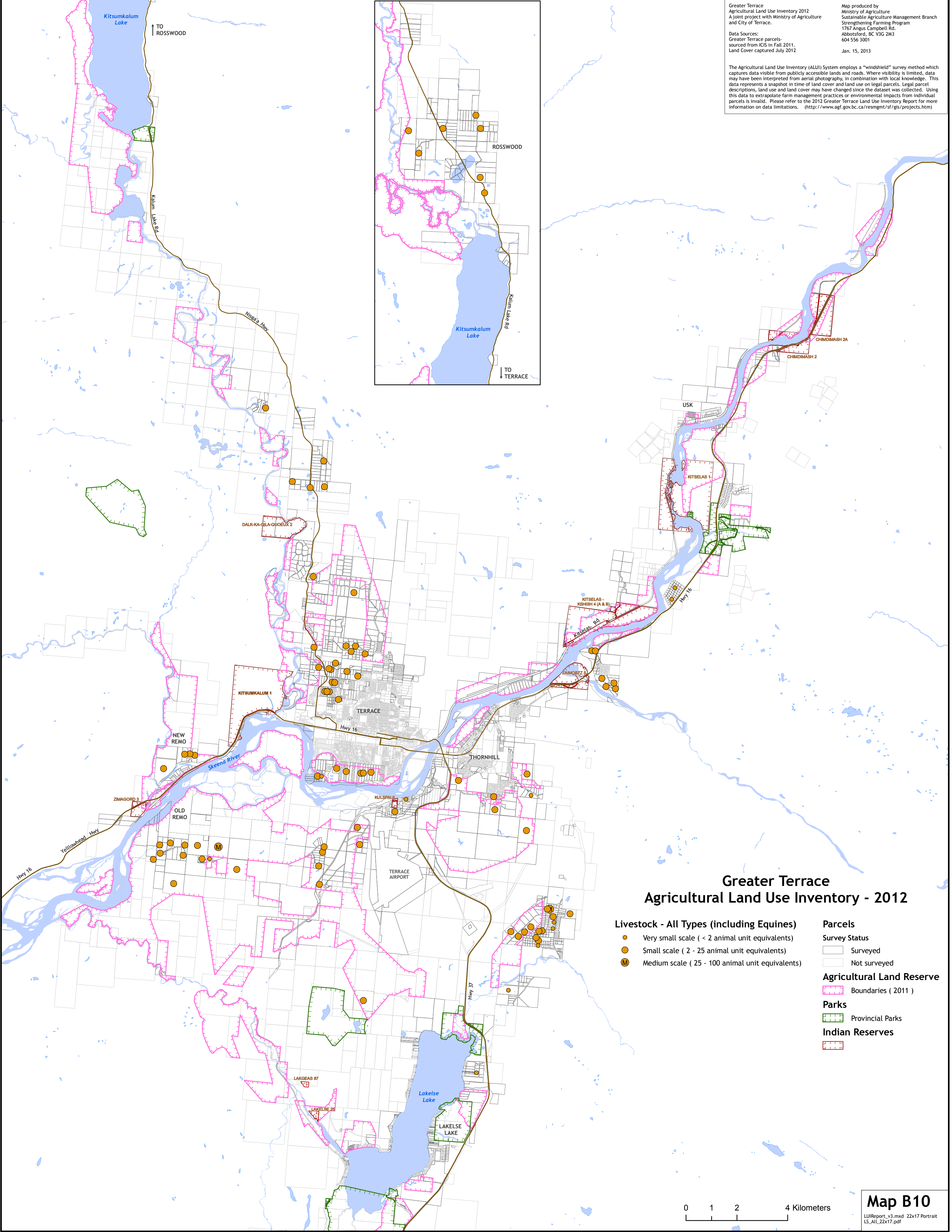
Greater Terrace
Agricultural Land Use Inventory 2012
A joint project with Ministry of Agriculture
and City of Terrace.

Data Sources:
Greater Terrace parcels-
sourced from ICIS in Fall 2011.
Land Cover captured July 2012

Map produced by
Ministry of Agriculture
Sustainable Agriculture Management Branch
Strengthening Farming Program
1767 Angus Campbell Rd.
Abbotsford, BC V3G 2M3
604 556 3001

Jan. 15, 2013

The Agricultural Land Use Inventory (ALUI) System employs a "windshield" survey method which captures data visible from publicly accessible lands and roads. Where visibility is limited, data may have been interpreted from aerial photography, in combination with local knowledge. This data represents a snapshot in time of land cover and land use on legal parcels. Legal parcel descriptions, land use and land cover may have changed since the dataset was collected. Using this data to extrapolate farm management practices or environmental impacts from individual parcels is invalid. Please refer to the 2012 Greater Terrace Land Use Inventory Report for more information on data limitations. (<http://www.agf.gov.bc.ca/resmgmt/sf/gis/projects.htm>)



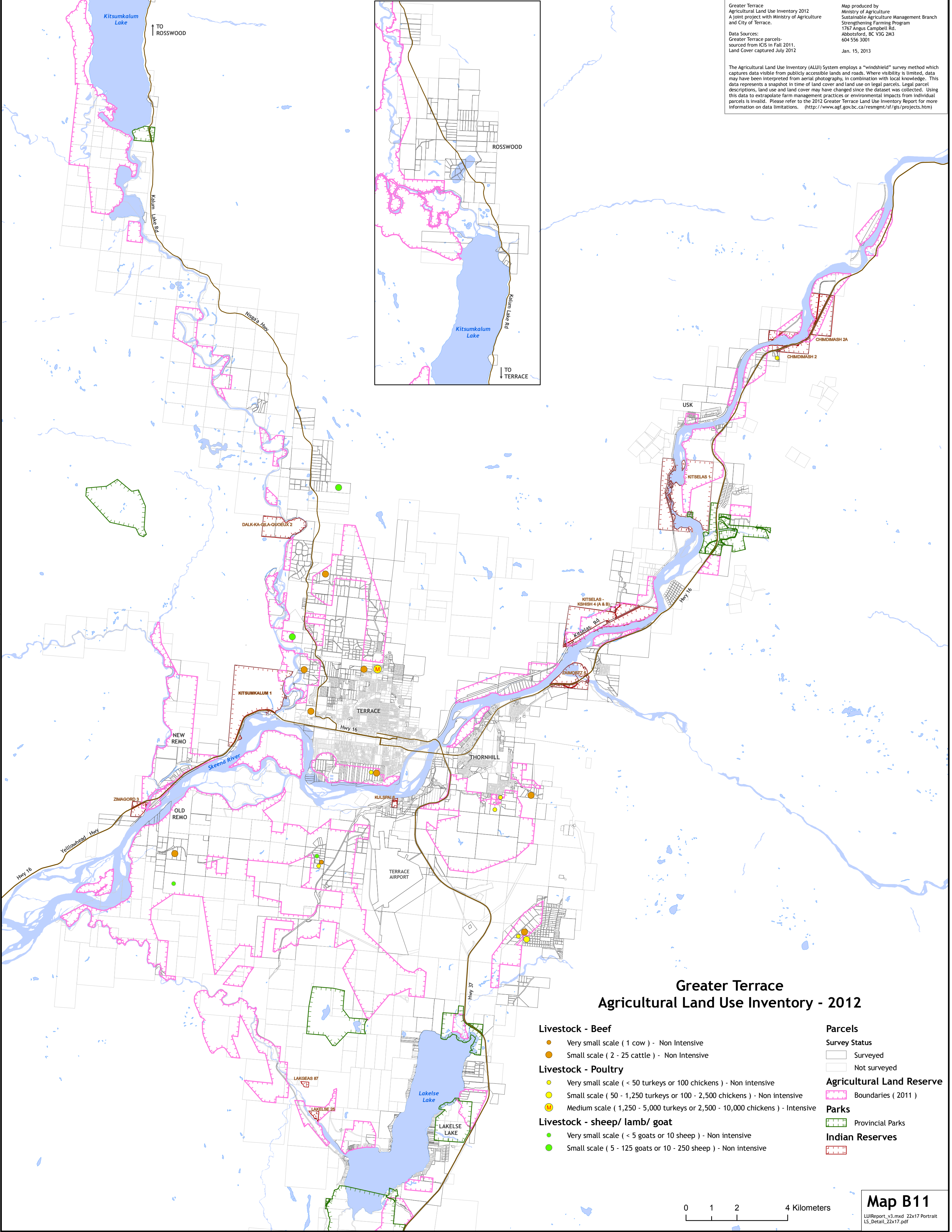
Greater Terrace
Agricultural Land Use Inventory 2012
A joint project with Ministry of Agriculture
and City of Terrace.

Data Sources:
Greater Terrace parcels-
sourced from ICIS in Fall 2011.
Land Cover captured July 2012

Map produced by
Ministry of Agriculture
Sustainable Agriculture Management Branch
Strengthening Farming Program
1767 Angus Campbell Rd.
Abbotsford, BC V3G 2M3
604 556 3001

Jan. 15, 2013

The Agricultural Land Use Inventory (ALUI) System employs a "windshield" survey method which captures data visible from publicly accessible lands and roads. Where visibility is limited, data may have been interpreted from aerial photography, in combination with local knowledge. This data represents a snapshot in time of land cover and land use on legal parcels. Legal parcel descriptions, land use and land cover may have changed since the dataset was collected. Using this data to extrapolate farm management practices or environmental impacts from individual parcels is invalid. Please refer to the 2012 Greater Terrace Land Use Inventory Report for more information on data limitations. (<http://www.agf.gov.bc.ca/resmgmt/sf/gis/projects.htm>)



Greater Terrace Agricultural Land Use Inventory - 2012

- Livestock - Beef**

●

Very small scale (1 cow) - Non Intensive

●

Small scale (2 - 25 cattle) - Non Intensive
- Livestock - Poultry**

●

Very small scale (< 50 turkeys or 100 chickens) - Non intensive

●

Small scale (50 - 1,250 turkeys or 100 - 2,500 chickens) - Non intensive

●

Medium scale (1,250 - 5,000 turkeys or 2,500 - 10,000 chickens) - Intensive
- Livestock - sheep/ lamb/ goat**

●

Very small scale (< 5 goats or 10 sheep) - Non intensive

●

Small scale (5 - 125 goats or 10 - 250 sheep) - Non intensive
- Parcels**

Survey Status

Surveyed

Not surveyed
- Agricultural Land Reserve**

Boundaries (2011)
- Parks**

Provincial Parks
- Indian Reserves**

0 1 2 4 Kilometers

Map B11
LUIReport_v3.mxd 22x17 Portrait
LS_Detail_22x17.pdf

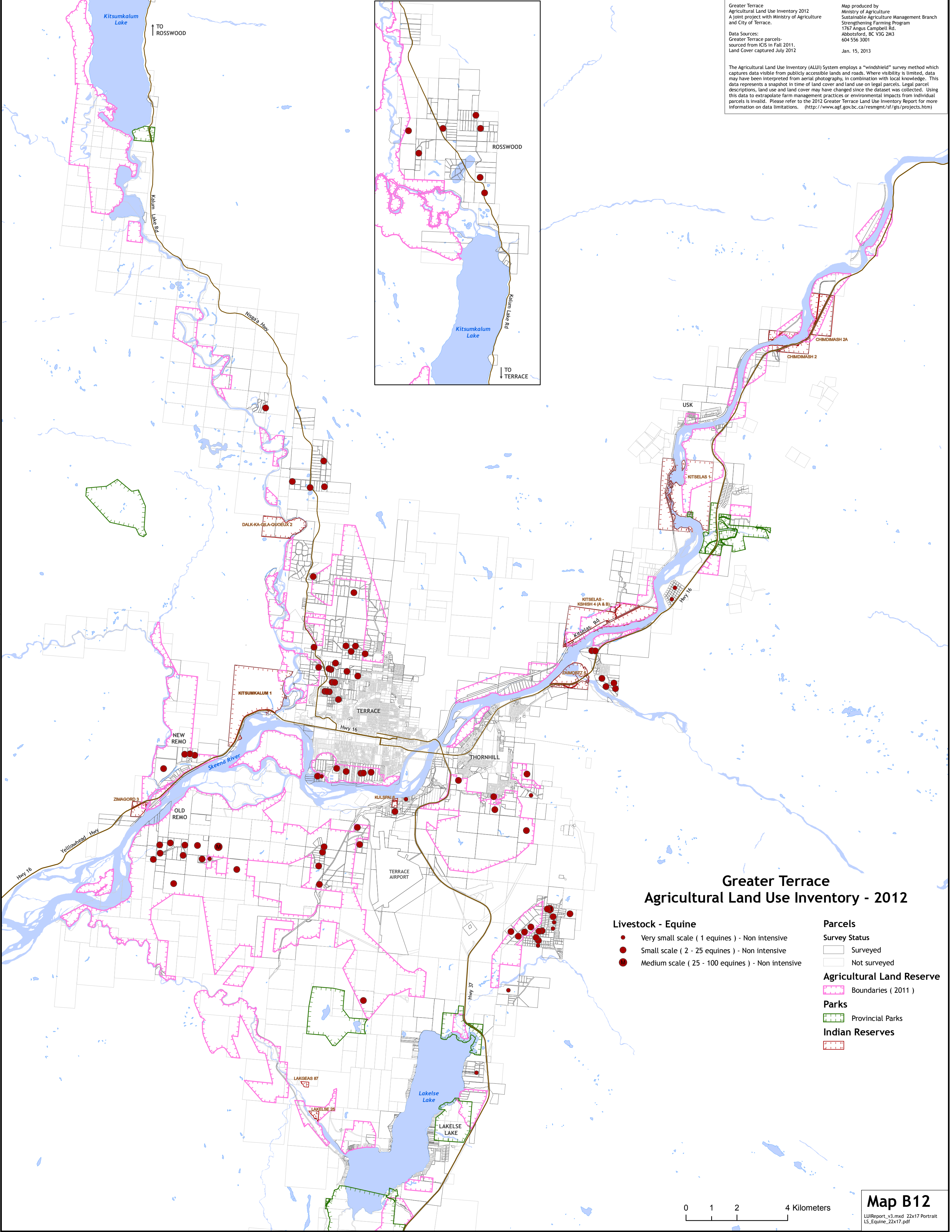
Greater Terrace
Agricultural Land Use Inventory 2012
A joint project with Ministry of Agriculture
and City of Terrace.

Data Sources:
Greater Terrace parcels-
sourced from ICIS in Fall 2011.
Land Cover captured July 2012

Map produced by
Ministry of Agriculture
Sustainable Agriculture Management Branch
Strengthening Farming Program
1767 Angus Campbell Rd.
Abbotsford, BC V3G 2M3
604 556 3001

Jan. 15, 2013

The Agricultural Land Use Inventory (ALUI) System employs a "windshield" survey method which captures data visible from publicly accessible lands and roads. Where visibility is limited, data may have been interpreted from aerial photography, in combination with local knowledge. This data represents a snapshot in time of land cover and land use on legal parcels. Legal parcel descriptions, land use and land cover may have changed since the dataset was collected. Using this data to extrapolate farm management practices or environmental impacts from individual parcels is invalid. Please refer to the 2012 Greater Terrace Land Use Inventory Report for more information on data limitations. (<http://www.agf.gov.bc.ca/resmgmt/sf/gis/projects.htm>)



Greater Terrace Agricultural Land Use Inventory - 2012

- Livestock - Equine

 - Very small scale (1 equines) - Non intensive
 - Small scale (2 - 25 equines) - Non intensive
 - Medium scale (25 - 100 equines) - Non intensive
- Parcels

Survey Status

 - Surveyed
 - Not surveyed

Agricultural Land Reserve

 - Boundaries (2011)

Parks

 - Provincial Parks

Indian Reserves

 -

0 1 2 4 Kilometers

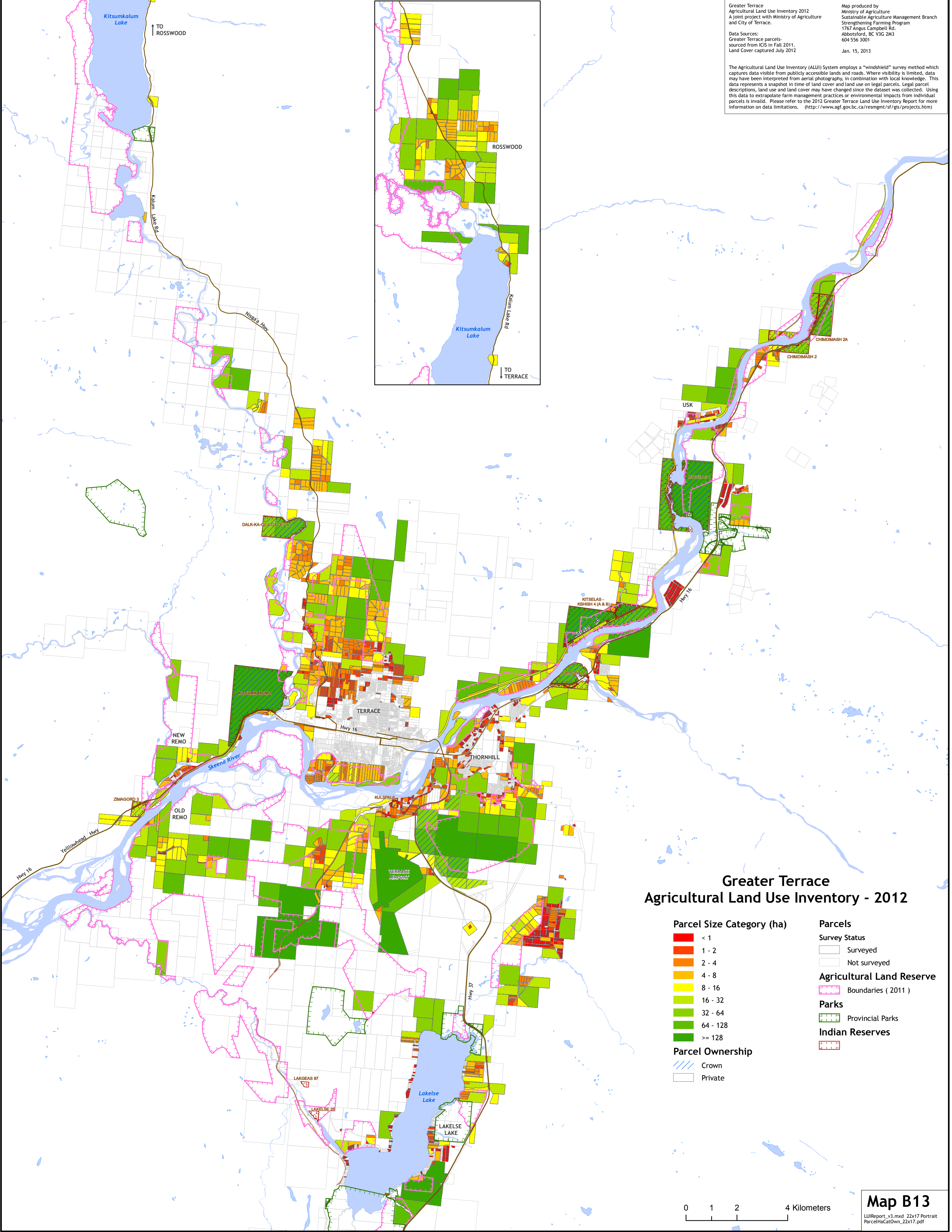
Greater Terrace
Agricultural Land Use Inventory 2012
A joint project with Ministry of Agriculture
and City of Terrace.

Data Sources:
Greater Terrace parcels-
sourced from ICIS in Fall 2011.
Land Cover captured July 2012

Map produced by
Ministry of Agriculture
Sustainable Agriculture Management Branch
Strengthening Farming Program
1767 Angus Campbell Rd.
Abbotsford, BC V3G 2M3
604 556 3001

Jan. 15, 2013

The Agricultural Land Use Inventory (ALUI) System employs a "windshield" survey method which captures data visible from publicly accessible lands and roads. Where visibility is limited, data may have been interpreted from aerial photography, in combination with local knowledge. This data represents a snapshot in time of land cover and land use on legal parcels. Legal parcel descriptions, land use and land cover may have changed since the dataset was collected. Using this data to extrapolate farm management practices or environmental impacts from individual parcels is invalid. Please refer to the 2012 Greater Terrace Land Use Inventory Report for more information on data limitations. (<http://www.agf.gov.bc.ca/resmgmt/sf/gis/projects.htm>)



Greater Terrace Agricultural Land Use Inventory - 2012

Parcel Size Category (ha)

- < 1
- 1 - 2
- 2 - 4
- 4 - 8
- 8 - 16
- 16 - 32
- 32 - 64
- 64 - 128
- >= 128

Parcel Ownership

- Crown
- Private

Parcels

- Surveyed
- Not surveyed

Agricultural Land Reserve

- Boundaries (2011)

Parks

- Provincial Parks

Indian Reserves

-

