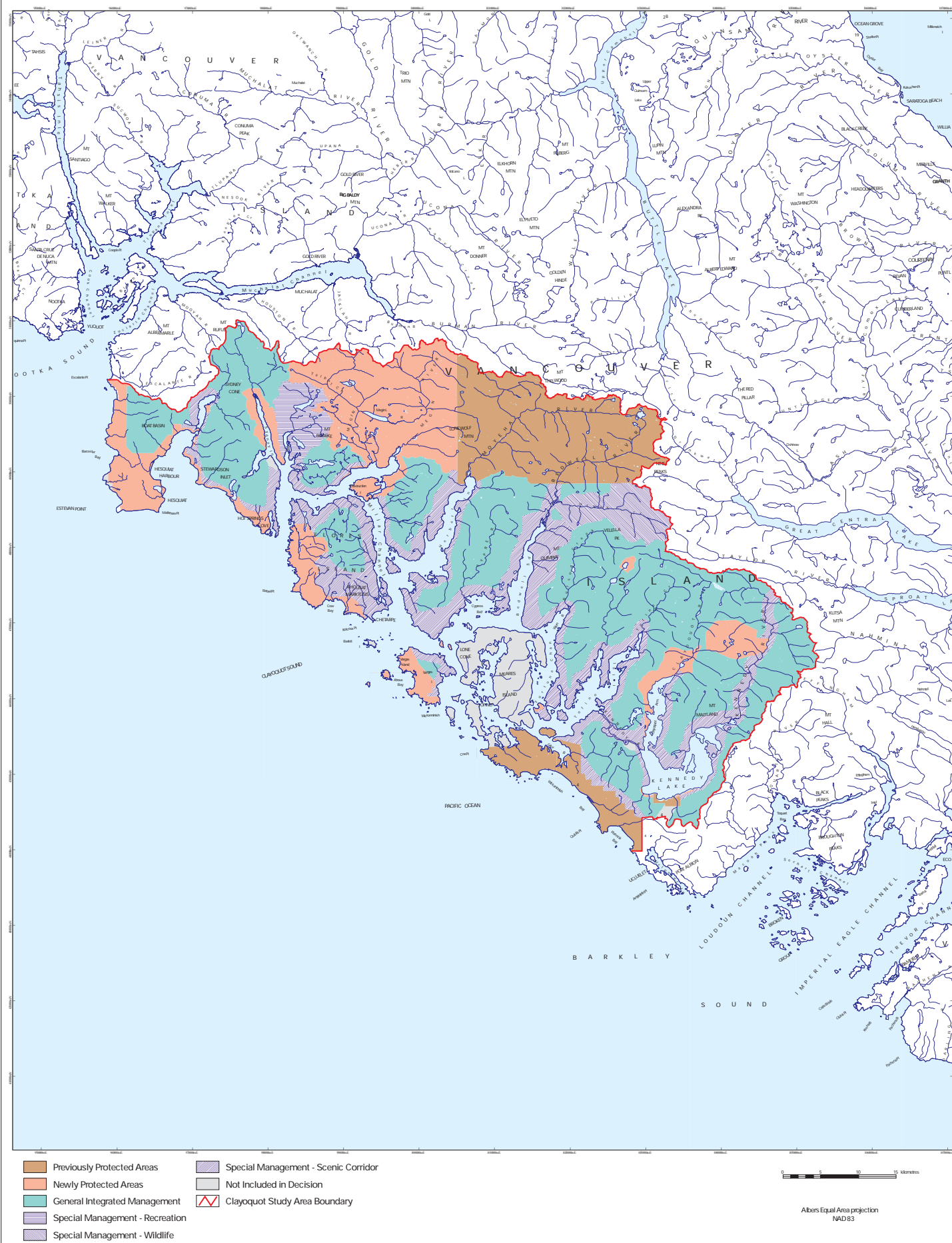


List of Maps

Map 1	Clayoquot Sound Land Use Decision
Map 2	Fortune Channel Planning Unit – Clayoquot Sound
Map 3	Fortune Channel Planning Unit – Topographic Relief
Map 4	Fortune Channel – Biogeoclimatic Ecosystem Classification (BEC)
Map 5	Fortune Channel – Forest Age Distribution
Map 6	Fortune Channel – Land Status
Map 7	Fortune Channel – Hydriparian Reserves
Map 8	Fortune Channel – Terrain Stability Reserves
Map 9	Fortune Channel – Sensitive Soils Reserves
Map 10	Fortune Channel – Reserves for Red- and Blue-listed Plant Communities
Map 11	Fortune Channel – Marbled Murrelet Reserves
Map 12	Fortune Channel – Current Old Forest and Forest-interior Old Forest
Map 13	Fortune Channel – Forest-interior Old Forest within Reserve Network
Map 14	Fortune Channel – Reserves added for Ecosystem Representation
Map 15 (AFN)	Fortune Channel – Culturally Significant Areas for the Ahousaht First Nation
Map 15 (TFN)	Fortune Channel – Culturally Significant Areas for the Tla-o-qui-aht First Nations
Map 16	Fortune Channel – Scenic Management Classes
Map 17	Fortune Channel – Reserves for Recreation/Tourism Values
Map 18	Fortune Channel – Reserve Network
Map 19	Fortune Channel – Scenic Management Classes and Reserve Network
Map 20	Fortune Channel – Reserves and Harvestable Areas
Map 21	Fortune Channel – Watershed Rate of Cut Limits

Clayoquot Sound Land Use Decision (1993)



0 5 10 15 Kilometers

Albers Equal Area projection
NAD83

May 15, 2006

Map produced by ERM Vancouver Island Service Center for the Clayoquot Sound Planning Committee

Clayoquot Sound



- Clayoquot Sound Study Area
- Planning Unit
- Clayoquot Study Area Boundary

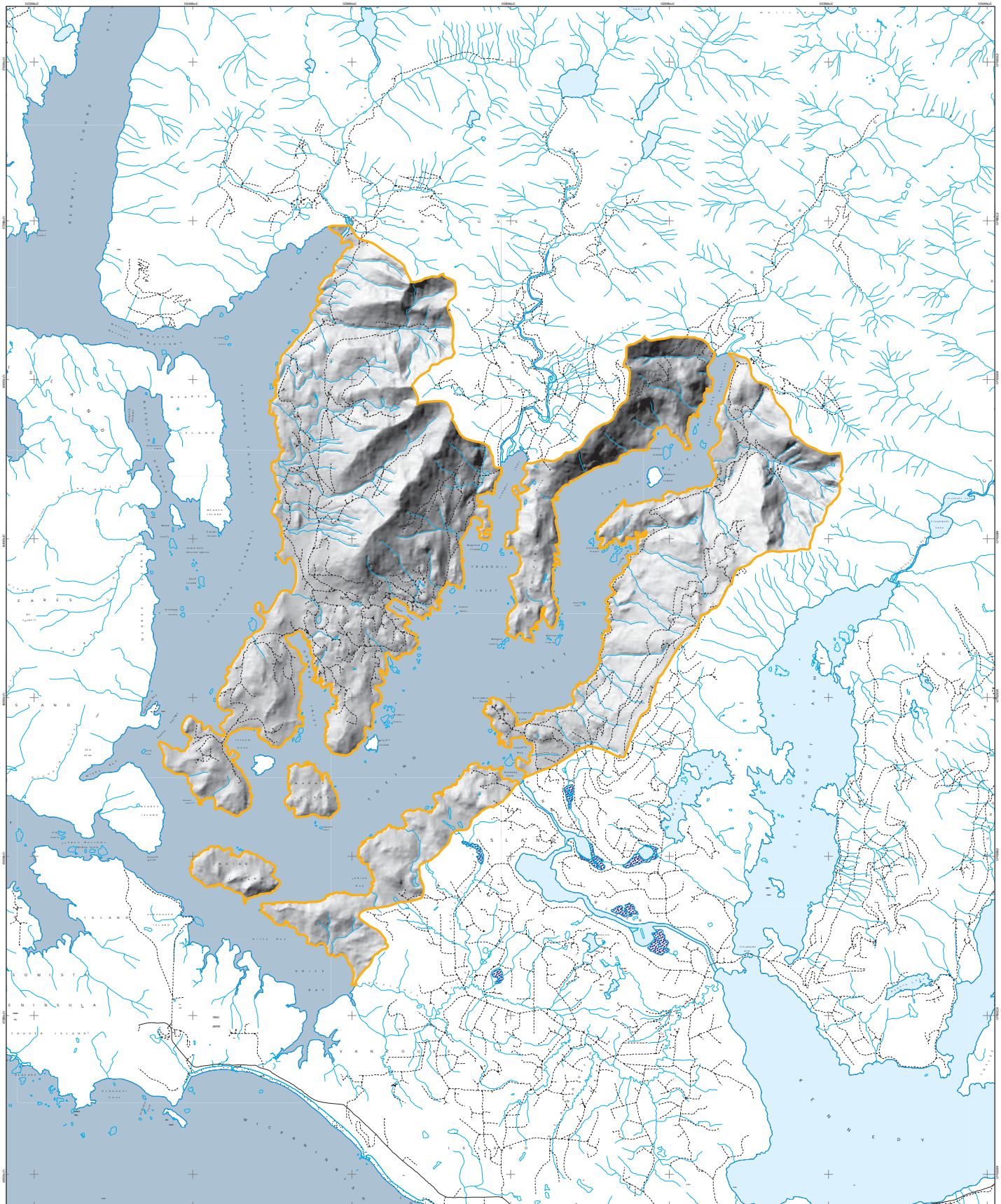
0 5 10 15 Kilometers






Albers Equal Area projection
NAD83

May 15, 2006

Map produced by ERM Vancouver Island Service Centre for the Clayoquot Sound Planning Committee

Fortune Channel Planning Unit Topographic Relief



-  TRIM Streams
-  Planning Unit Boundary
-  Paved Road
-  Swamp/Marsh
-  Gravel Road
-  Trail
-  Bridge

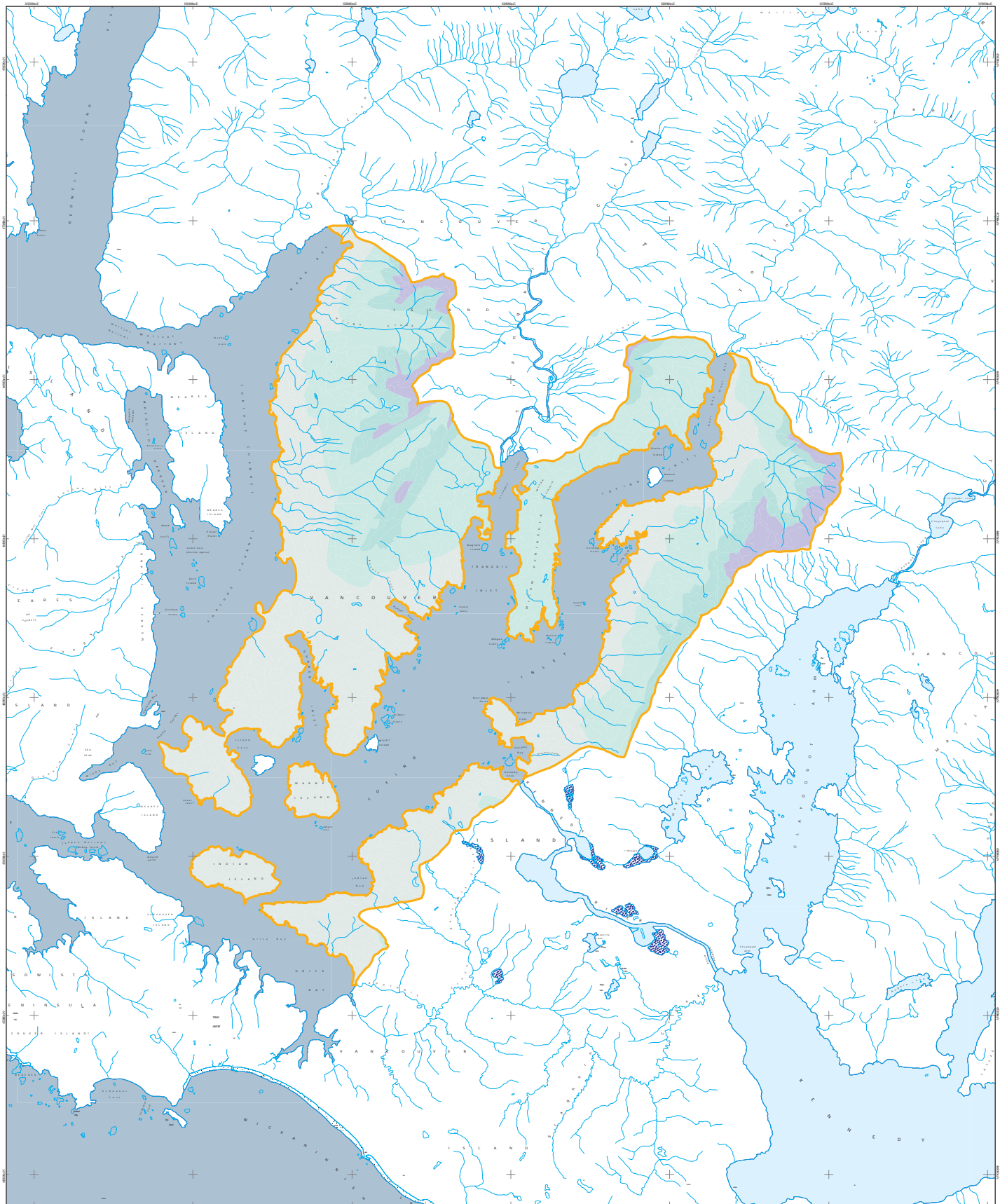
0 1 2 3 4 Kilometers

Albers Equal Area projection
NAD83

May 15, 2006

Map produced by ERM Vancouver Island Service Centre for the Clayoquot Sound Planning Committee

Fortune Channel Planning Unit Biogeoclimatic Ecosystem Classification (BEC)



- CWHvh1
- CWHvm1
- CWHvm2
- MHmm1
- MHmmpl
- AT
- TRIM streams
- Planning Unit Boundary

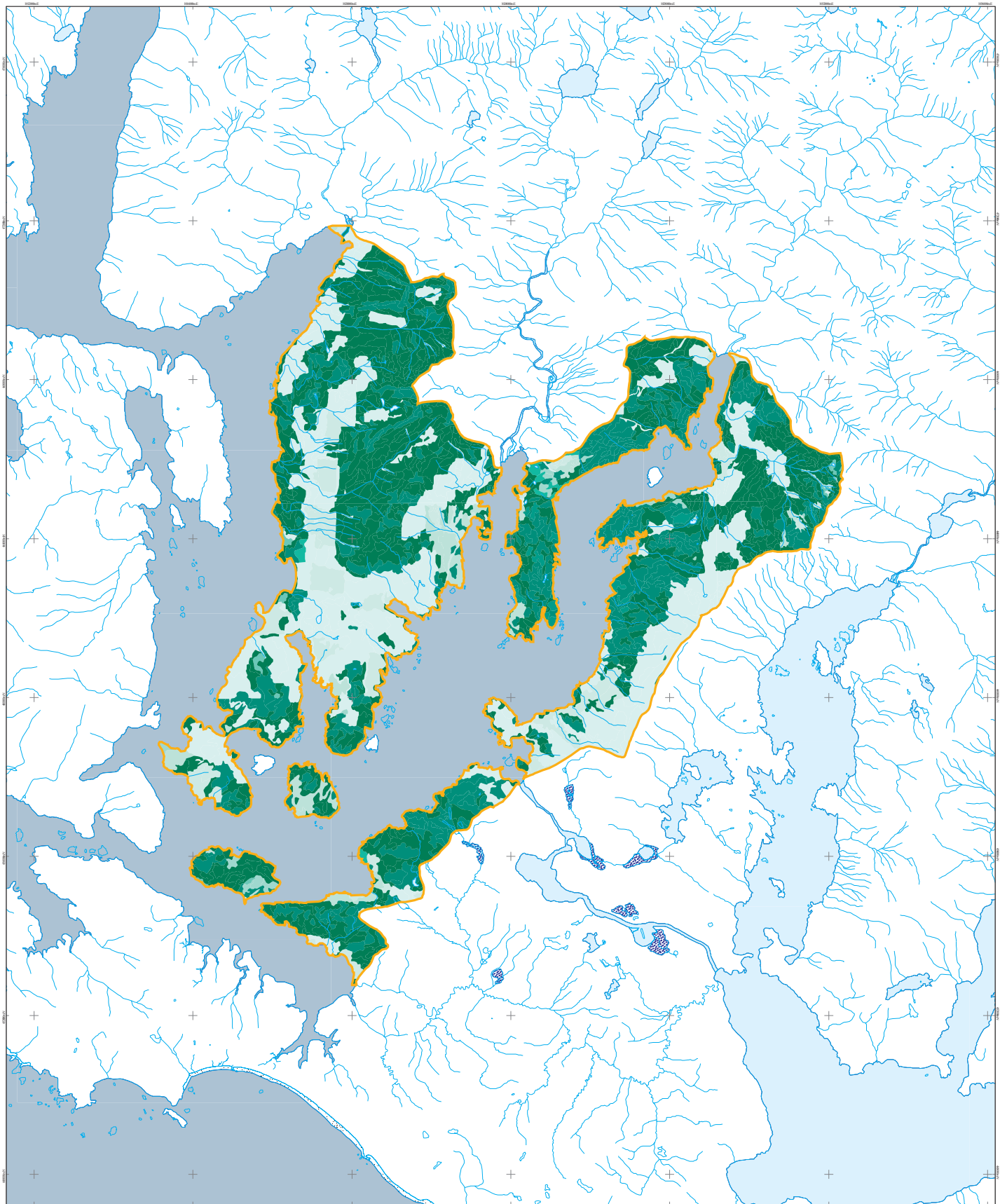
0 1 2 3 4 Kilometres

Albers Equal Area projection
NAD83

May 15, 2006

Map produced by ERM Vancouver Island Service Centre for the Clayoquot Sound Planning Committee

Fortune Channel Planning Unit Forest Age Distribution

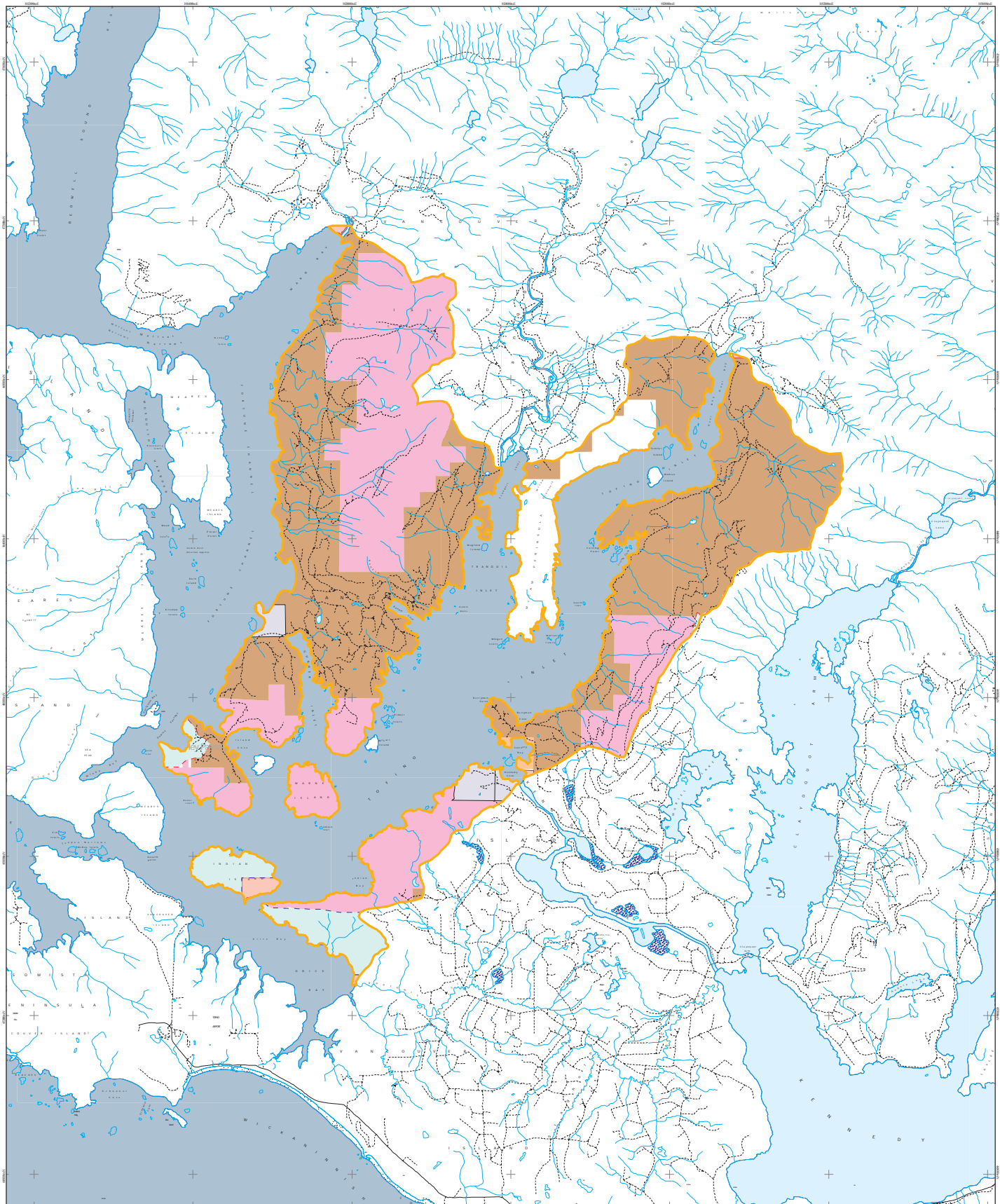


- | | | |
|------------------------------|-------------------------------|------------------------|
| Age Class 1 (1 - 20 years) | Age Class 6 (101 - 120 years) | Planning Unit Boundary |
| Age Class 2 (21 - 40 years) | Age Class 7 (121 - 140 years) | |
| Age Class 3 (41 - 60 years) | Age Class 8 (141 - 250 years) | |
| Age Class 4 (61 - 80 years) | Age Class 9 (251+ years) | |
| Age Class 5 (81 - 100 years) | TRIM streams | |

0 1 2 3 4 Kilometers

Albers Equal Area projection
NAD 83

Fortune Channel Planning Unit Land Status



- | | | | |
|-----------------|----------------------|--------------|------------------------|
| TFL 44 Western | Arrowsmith TSA | Swamp/Marsh | Bridge |
| TFL 54 Interior | Private Land | TRIM streams | Planning Unit Boundary |
| TFL 57 Isaak | Indian Reserves | Paved Road | |
| Woodlots | Parks | Gravel Road | |
| Timber Licences | Community Watersheds | Trail | |

Data Sources: Parks (Protected Areas)
Indian Reserves
Private Land
Community Watersheds
Woodlots

Land Use Coordination Office
Surveyor General Branch (1995)
Surveyor General Branch (1995)
Ministry of Sustainable Resource Management
Ministry of Forests

Warning: The data depicted on this map was compiled from different sources and base mapping. Boundaries will not align precisely. Indian Reserves and Private Land data was compiled at a scale of 1:250,000. Private land data does not include areas less than 16 hectares in size. Woodlot locations are not exact.

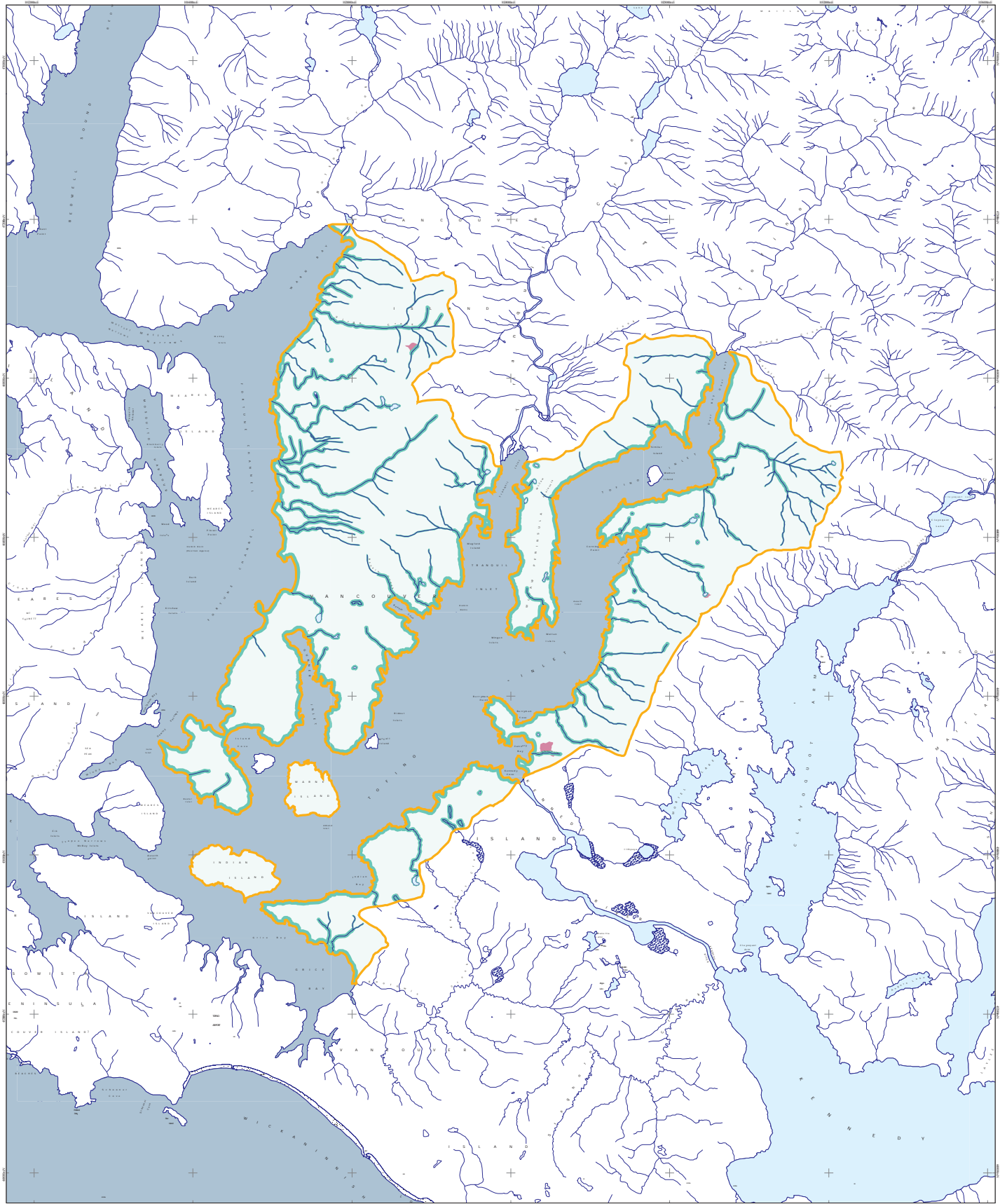
0 1 2 3 4 Kilometers

Albers Equal Area projection
NAD 83

May 15, 2006

Map produced by ERM Vancouver Island Service Centre for the Clayoquot Sound Planning Committee

Fortune Channel Planning Unit Hydroriparian Reserves



- Hydroriparian reserves
- Wetlands
- Floodplains
- Swamp/Marsh
- TRIM streams
- Planning Unit Boundary

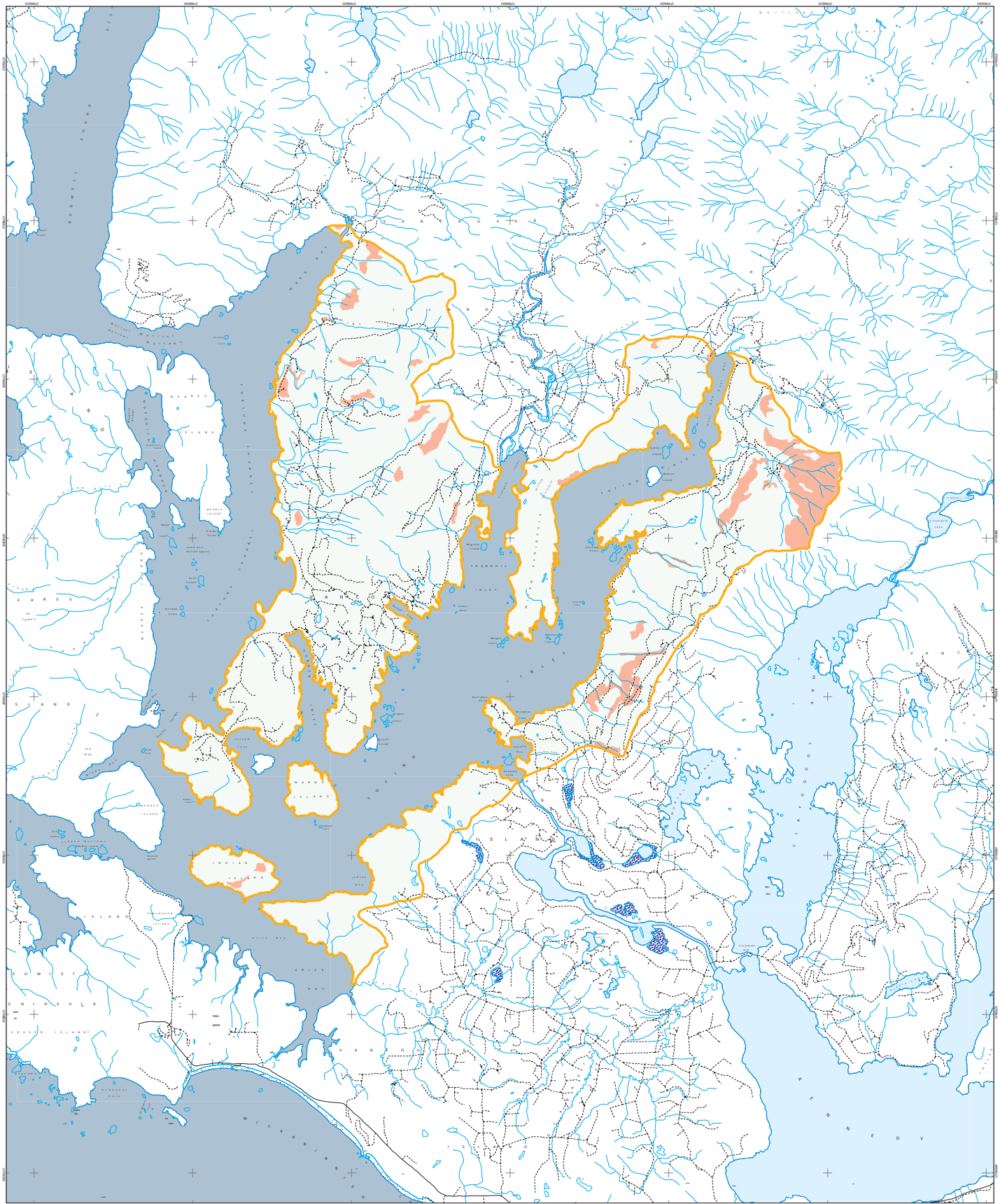
0 1 2 3 4 Kilometres

Albers Equal Area projection
NAD83

May 15, 2006

Map produced by ERM Vancouver Island Service Centre for the Clayoquot Sound Planning Committee

Fortune Channel Planning Unit Reserves for Terrain Stability



- Terrain Stability Reserves
- Swamp/Marsh
- TRIM streams
- Paved Road
- Gravel Road
- Trail
- Bridge
- Planning Unit Boundary

0 1 2 3 4 Kilometres

Albers Equal Area projection
NAD83

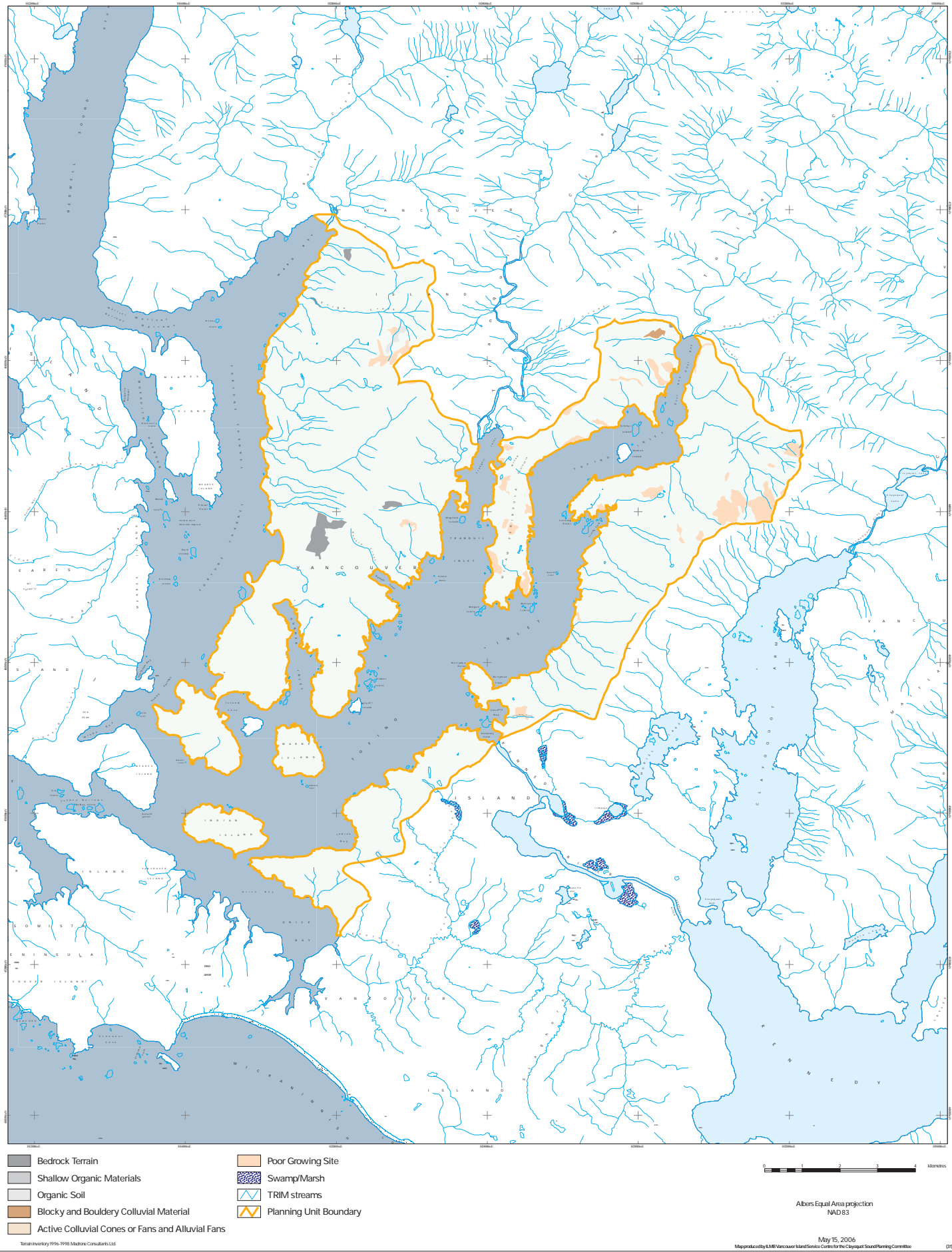
May 15, 2006

Map produced by EMB Vancouver Island Service Centre for the Clayoquot Sound Planning Committee

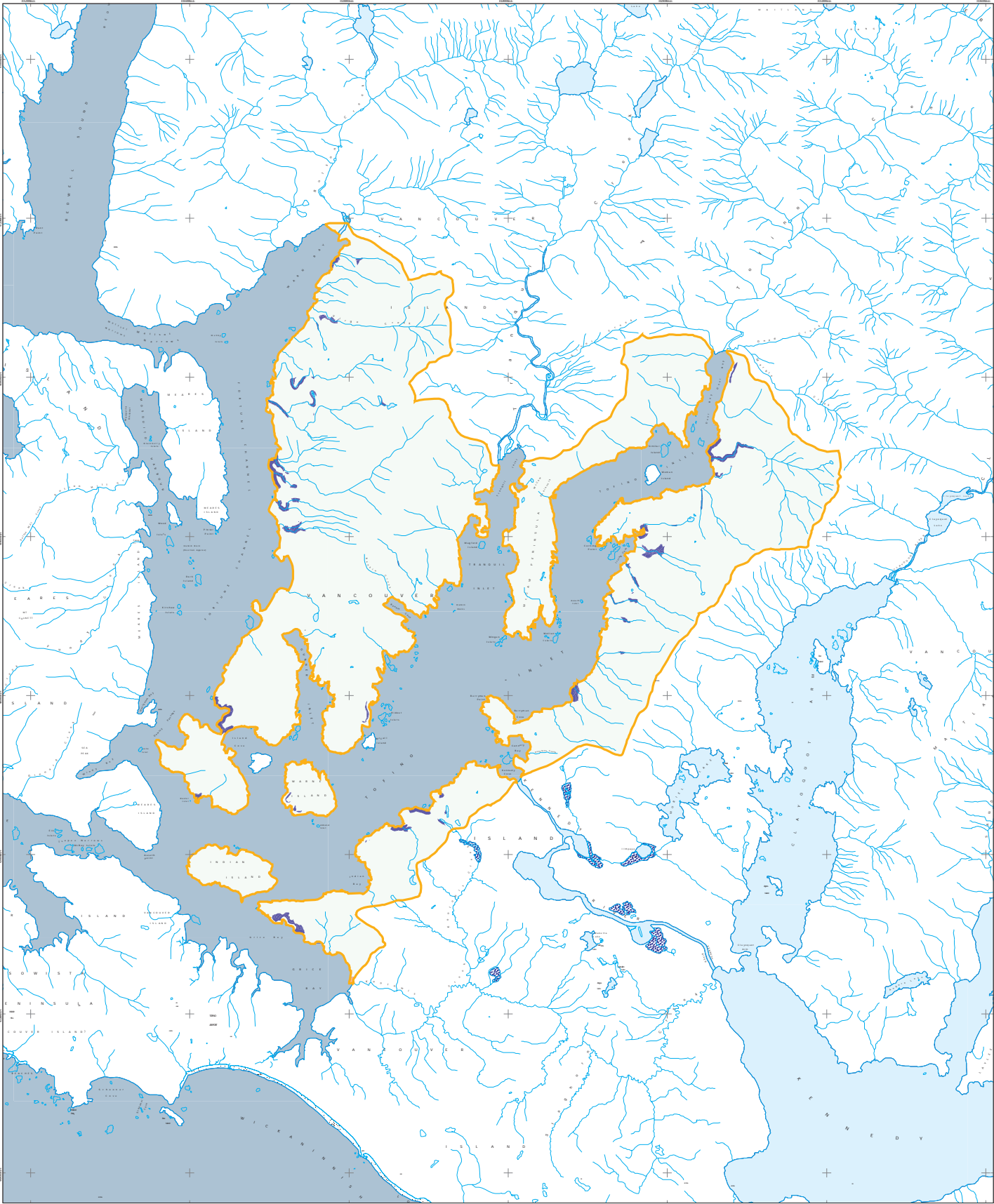
Inventory Done in Accordance with RIC Standards

Terrain Inventory 1996-1998 Madrona Consultants

Fortune Channel Planning Unit Reserves for Sensitive Soils



Fortune Channel Planning Unit Reserves for Red- and Blue-listed Plant Communities

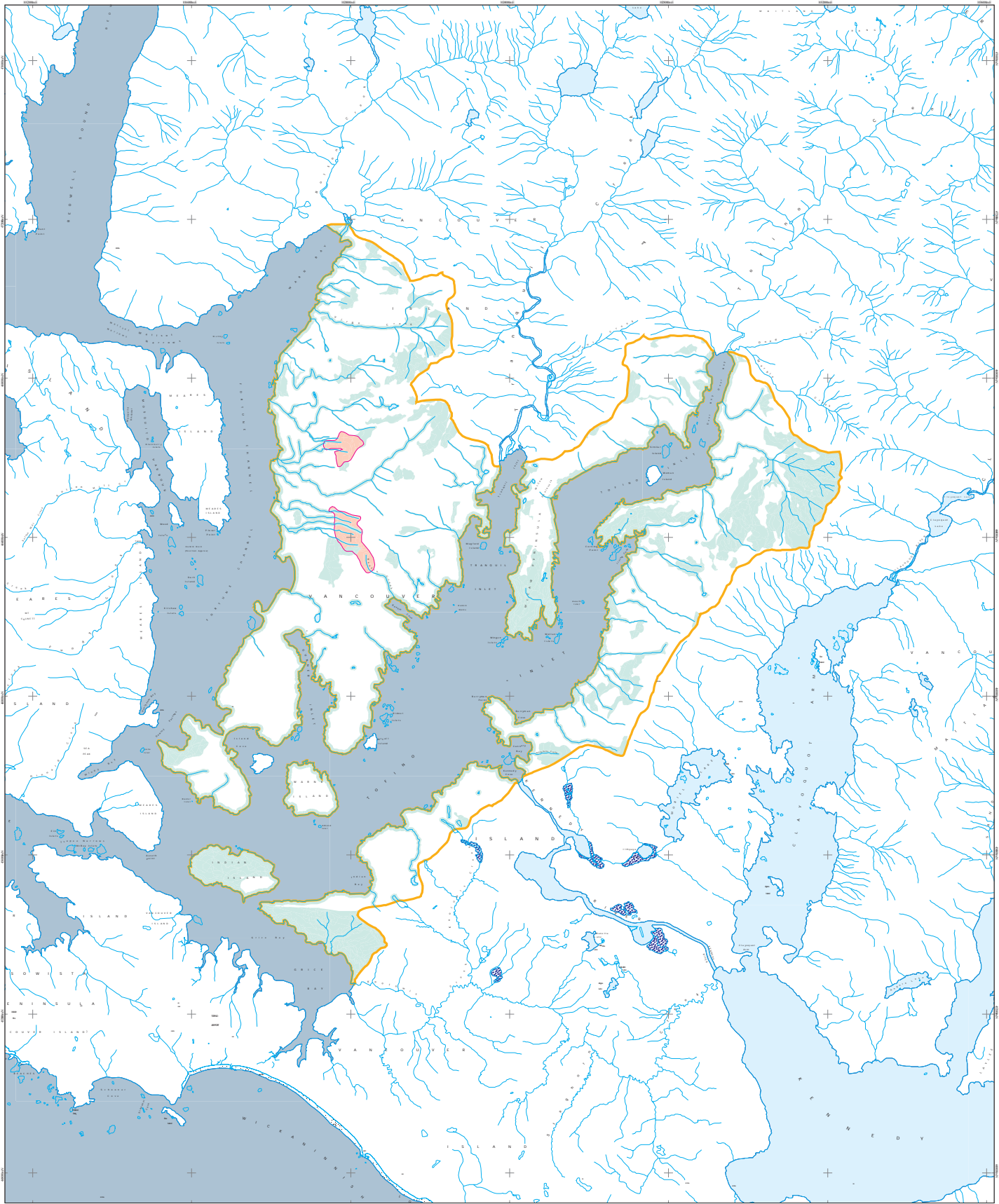


- Red-listed plant community reserves
- Blue-listed plant community reserves
- Swamp/Marsh
- TRIM streams
- Planning Unit Boundary



Albers Equal Area projection
NAD83

Fortune Channel Planning Unit Reserves for Marbled Murrelets

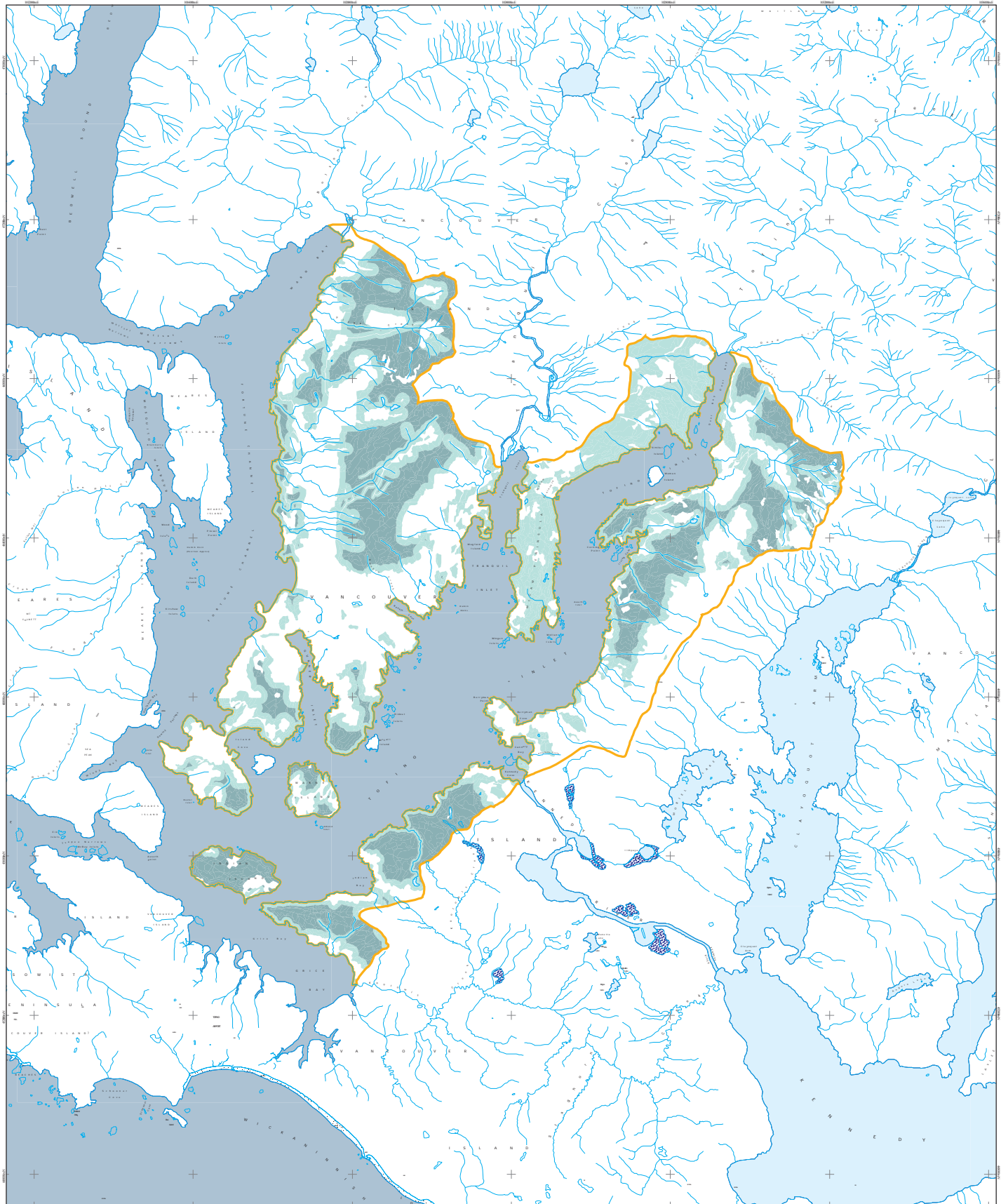


- Marbled Murrelet Reserves Exclusive of Existing Reserves
- Existing Reserve Network
- Marbled Murrelet Reserve Area Boundary
- TRIM streams
- Planning Unit Boundary

0 1 2 3 4 Kilometers

Albers Equal Area projection
NAD83

Fortune Channel Planning Unit Current Old Growth and Interior Old Growth Forest



- Old Growth Forest (age class 8 and 9)
- Interior Old Growth Forest
- Swamp/Marsh
- TRIM streams
- Planning Unit Boundary

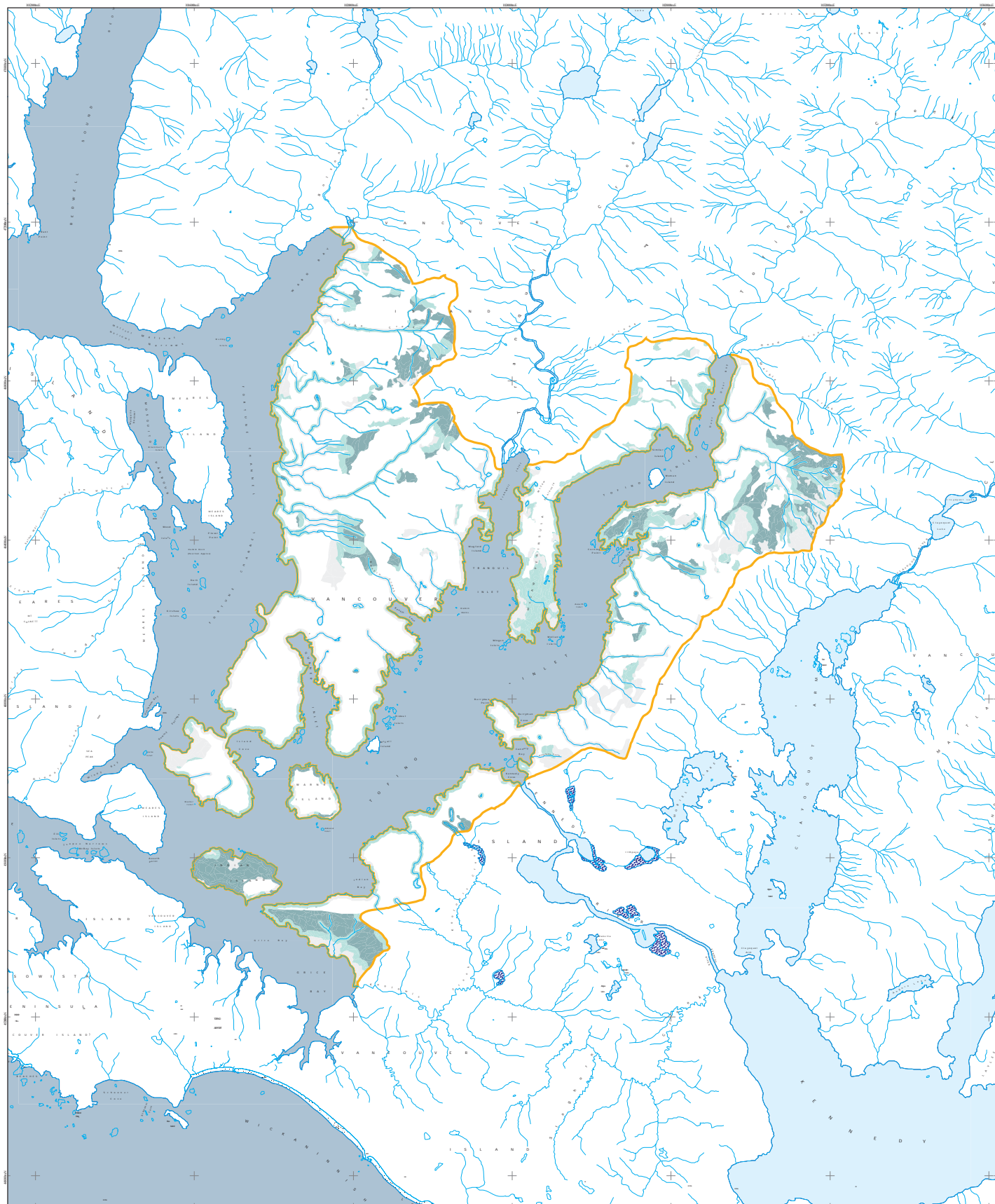
0 1 2 3 4 Kilometers

Albers Equal Area projection
NAD83

May 15, 2006

Map produced by ERM Vancouver Island Services Centre for the Clayoquot Sound Planning Committee

Fortune Channel Planning Unit Old Growth and Interior Old Growth in Reserve Network



- Old Growth Forest in Reserve Network
- Interior Old Growth Forest in Reserve Network
- Reserve Network
- Swamp/Marsh
- TRIM streams
- Planning Unit Boundary

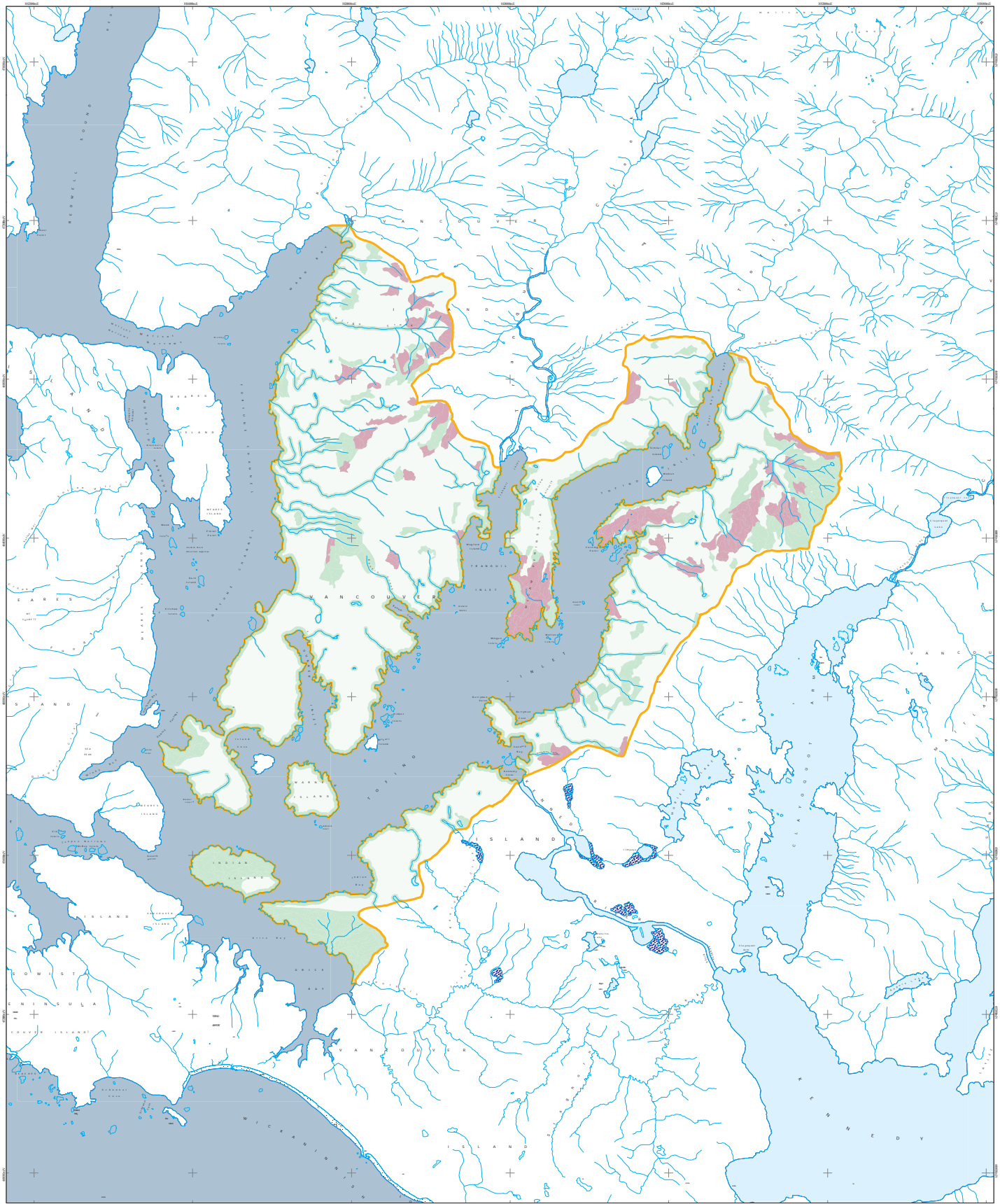
0 1 2 3 4 Kilometers

Albers Equal Area projection
NAD83

May 15, 2006

Map produced by ERM Vancouver Island Service Centre for the Clayoquot Sound Planning Committee

Fortune Channel Planning Unit Reserves added for Ecosystem Representation

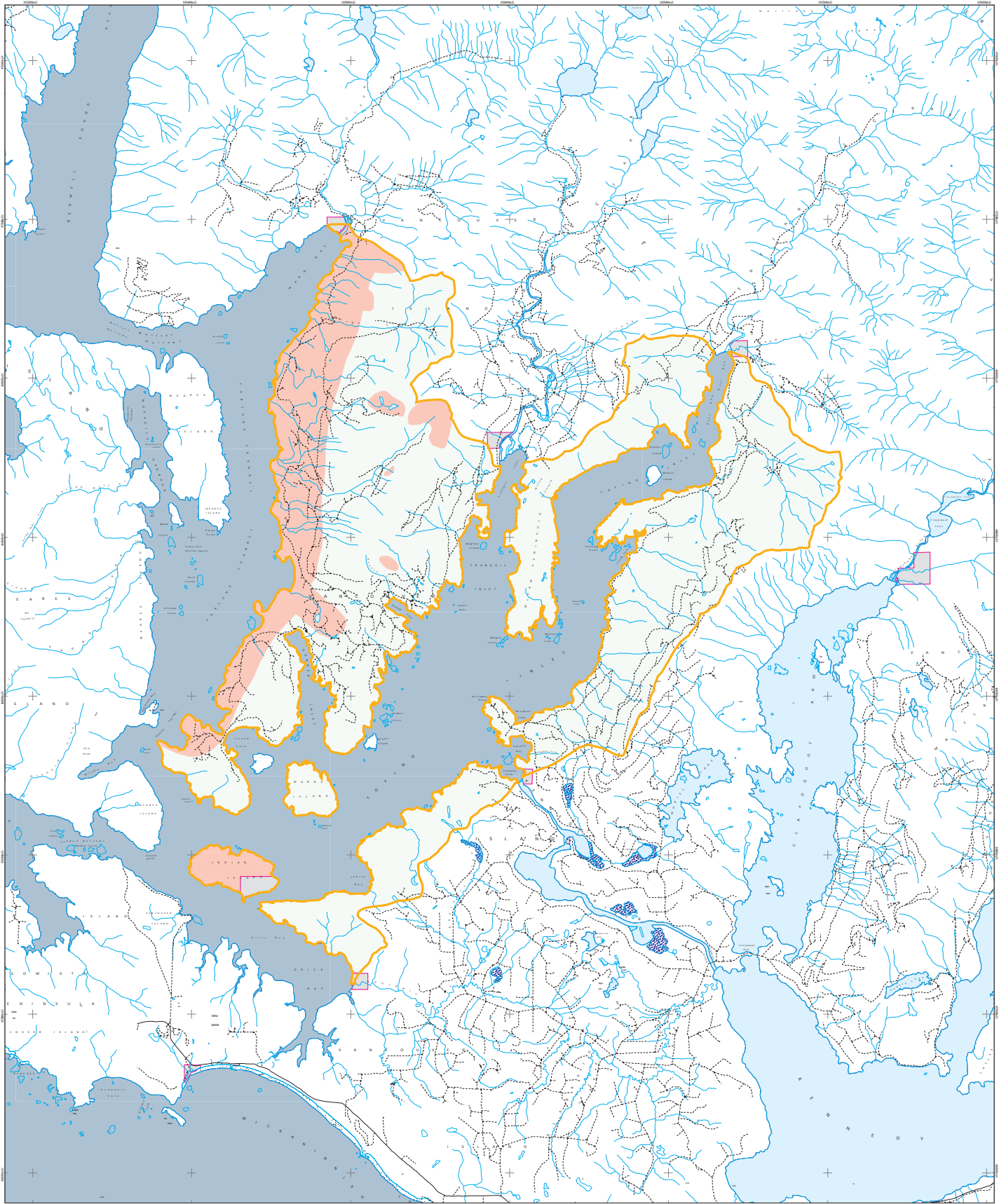


- Reserves to Complete Ecosystem Representation
- Reserves for Representative Ecosystems from Other Reserve Criteria
- TRIM streams
- Planning Unit Boundary

0 1 2 3 4 Kilometers

Albers Equal Area projection
NAD83

Fortune Channel Planning Unit Culturally Significant Areas - Ahousaht First Nation



- | | |
|------------------------------|------------------------|
| Culturally Significant Areas | Trail |
| Indian Reserves | Bridge |
| TRIM Streams | Planning Unit Boundary |
| Paved Road | |
| Gravel Road | |

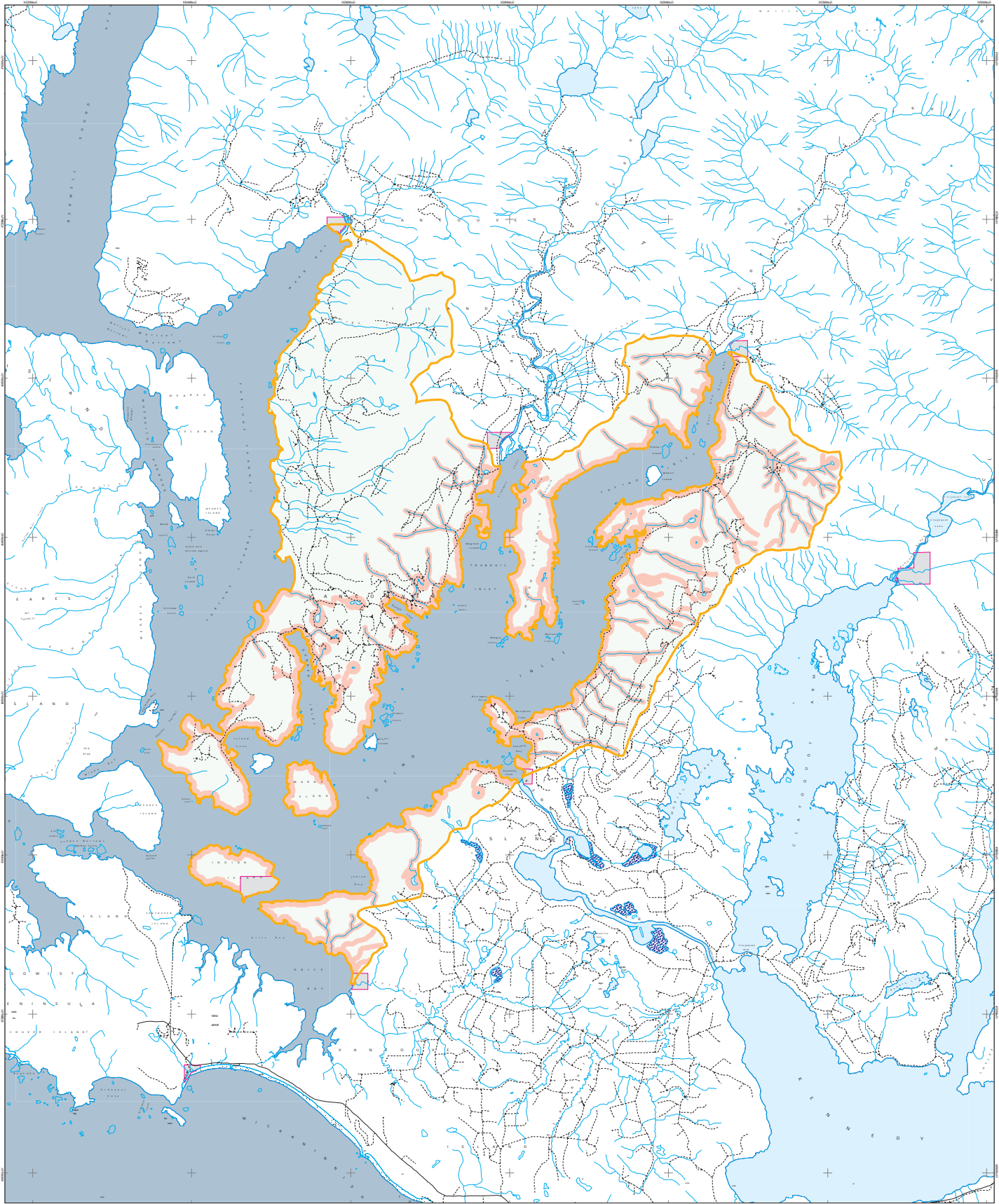
0 1 2 3 4 Kilometres

Albers Equal Area projection
NAD83

May 15, 2006

Map produced by ERM Vancouver Island Services Centre for the Clayoquot Sound Planning Committee

Fortune Channel Planning Unit Culturally Significant Areas - Tla-o-qui-aht First Nation



- | | | | |
|--|------------------------------|--|------------------------|
| | Culturally Significant Areas | | Trail |
| | Indian Reserves | | Bridge |
| | TRIM Streams | | Planning Unit Boundary |
| | Paved Road | | |
| | Gravel Road | | |

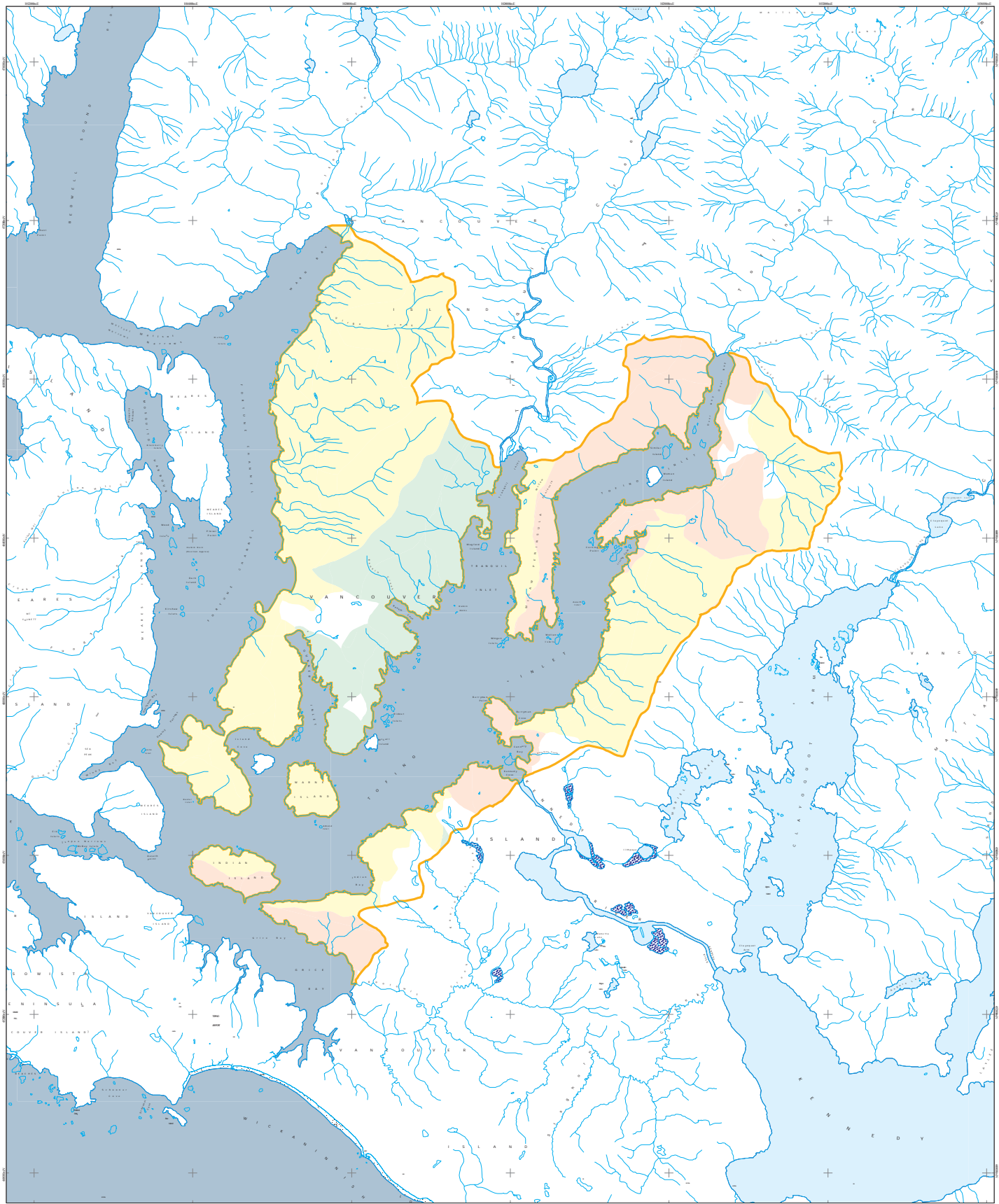
0 1 2 3 4 Kilometres

Albers Equal Area projection
NAD 83

May 15, 2006

Map produced by ERM Vancouver Island Services Centre for the Clayoquot Sound Planning Committee

Fortune Channel Planning Unit Scenic Class Objectives



- Small-scale Alteration
- Minimal Alteration
- Natural Appearing
- TRIM streams
- Planning Unit Boundary

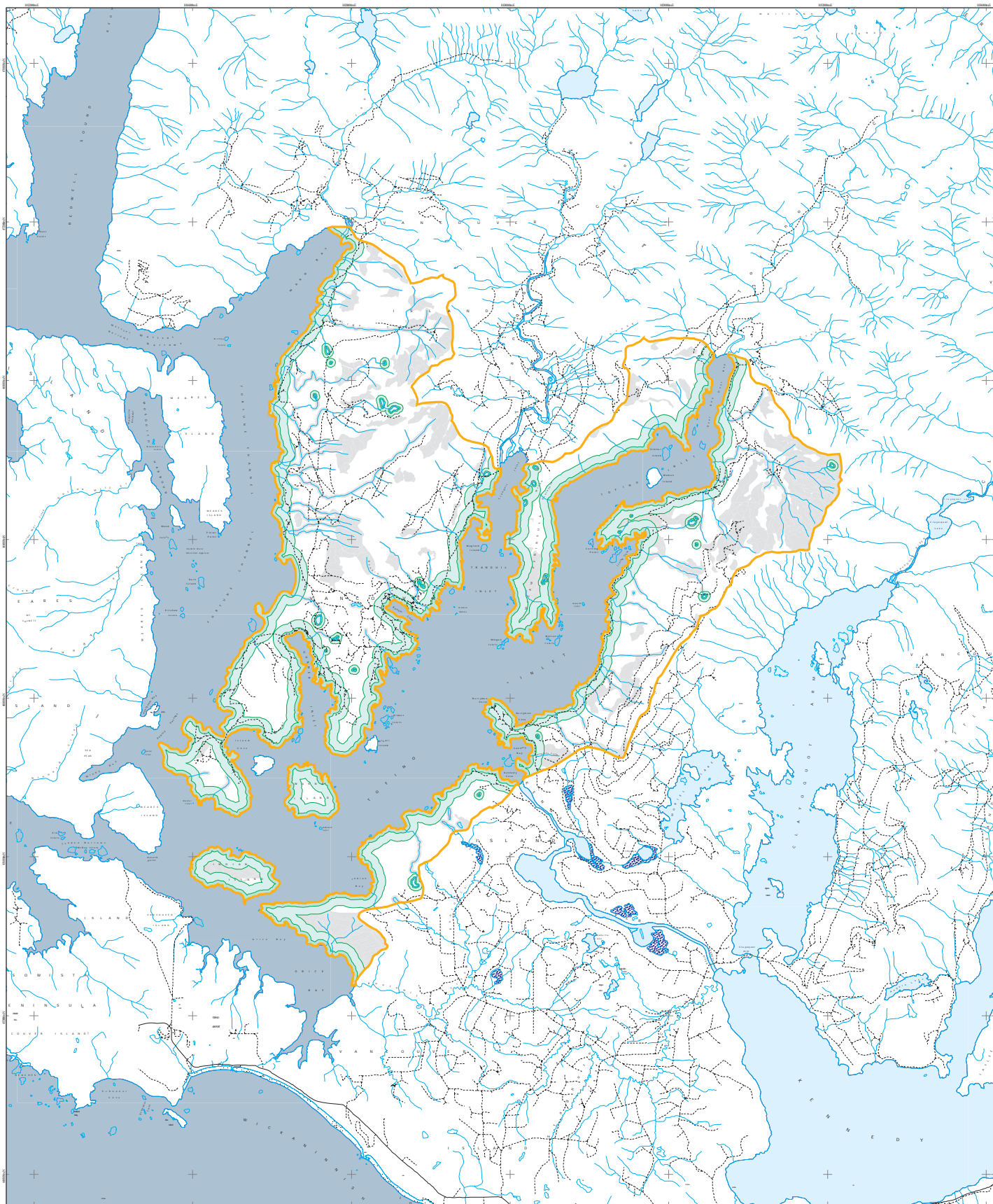
0 1 2 3 4 Kilometers

Albers Equal Area projection
NAD83

May 15, 2006

Map produced by ERM Vancouver Island Services Centre for the Clayoquot Sound Planning Committee

Fortune Channel Planning Unit Reserves for Recreation/Tourism Values



- | | |
|--------------------------|------------------------|
| Reserve | Paved Road |
| Management Zone | Gravel Road |
| Existing Reserve Network | Trail |
| Recreation Polygons | Bridge |
| TRIM streams | Planning Unit Boundary |

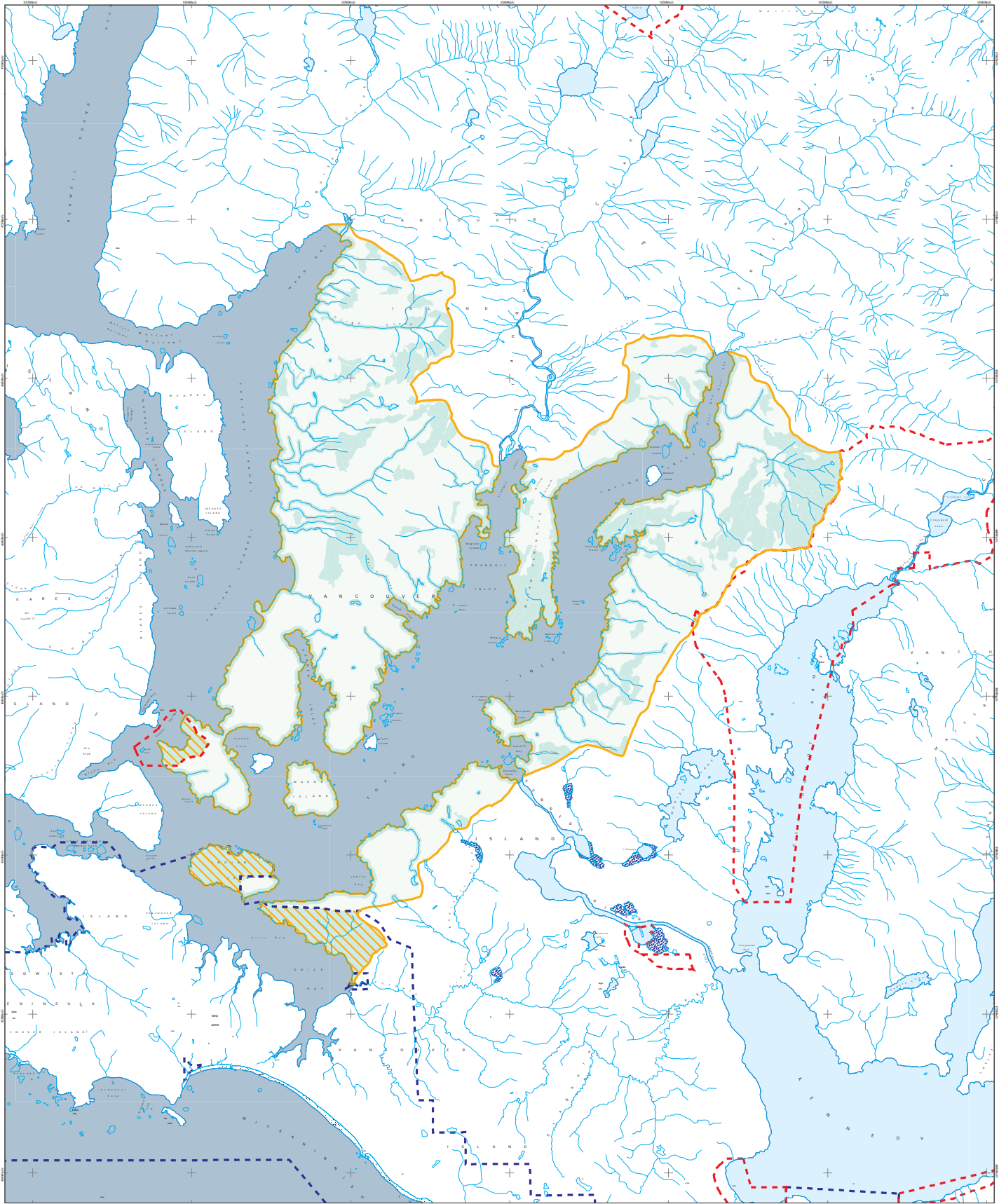
0 1 2 3 4 Kilometres

Albers Equal Area projection
NAD 83

May 15, 2006

Map produced by ERM Vancouver Island Service Centre for the Clayoquot Sound Planning Committee

Fortune Channel Planning Unit Reserve Network



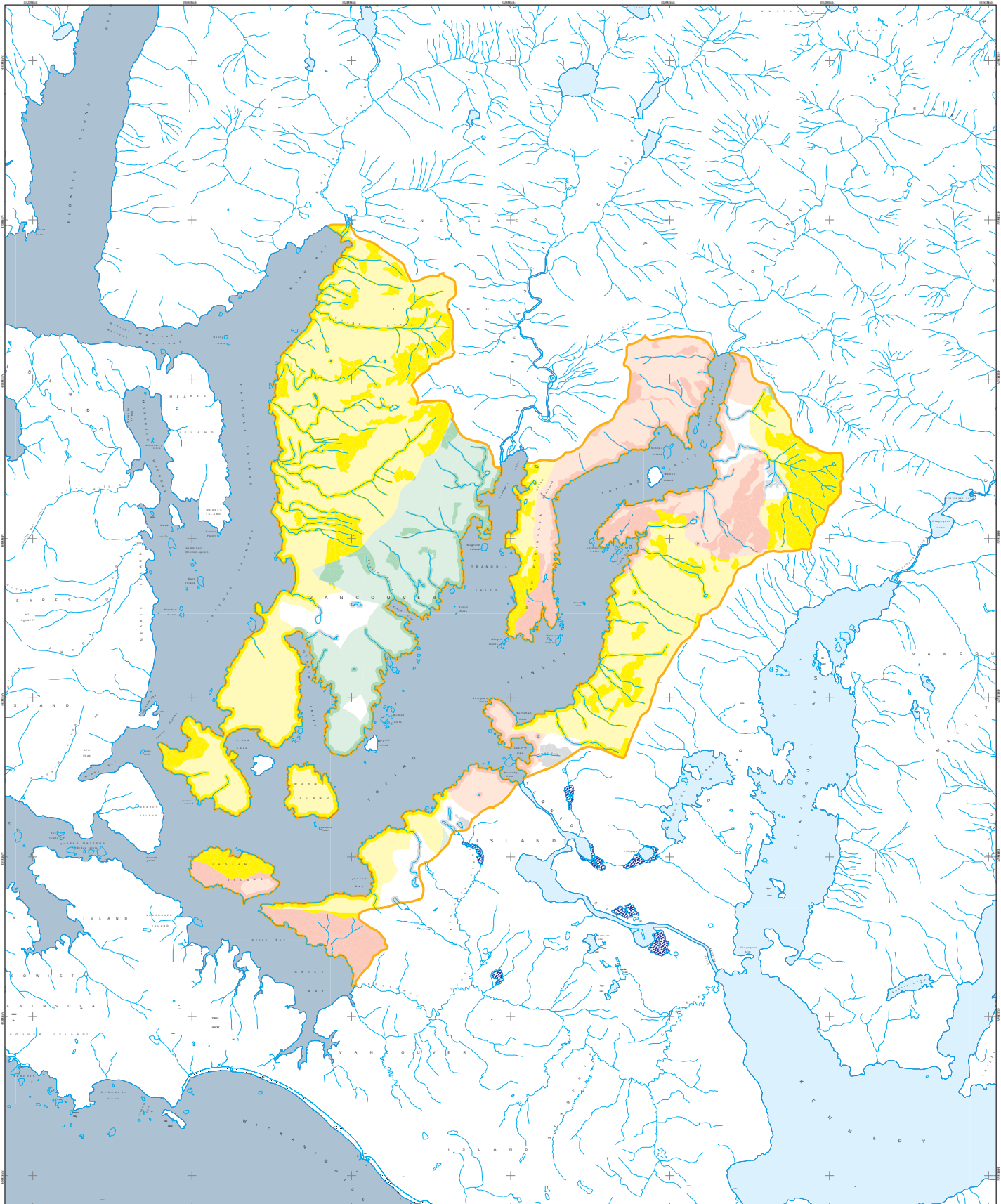
- Reserve Polygons
- Protected Areas
- TRIM streams
- Planning Unit Boundary

Note: Reserves established as per Clayquot Sound Scientific Panel Recommendations (See Recommendation R7.16 of Report 5)

0 1 2 3 4 Kilometers

Albers Equal Area projection
NAD 83

Fortune Channel Planning Unit Scenic Class Objectives and Reserve Network



- | | |
|------------------------------------------------------------------------------------------------------------------------------------------------------------------------------------|---------------------------------------------------------------------------------------------------------------------------------------------------------------------------------------------------|
| Small-scale Alteration | Natural Appearing - in Reserve |
| Minimal Alteration | Reserve Network outside of Scenic Management Areas |
| Natural Appearing | TRIM streams |
| Small-scale Alteration - in Reserve | Planning Unit Boundary |
| Minimal Alteration - in Reserve | |

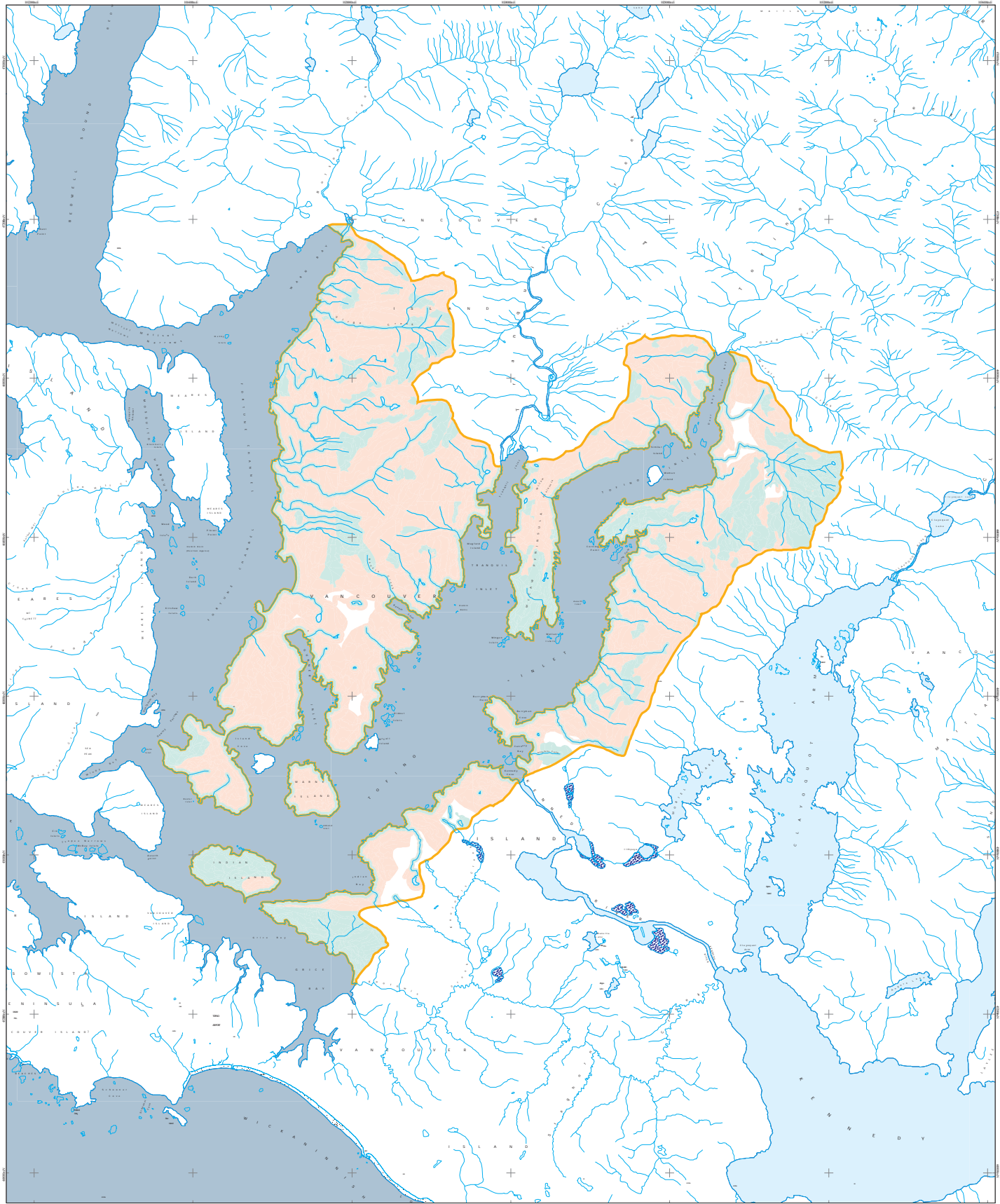
0 1 2 3 4 Kilometers

Albers Equal Area projection
NAD83

May 15, 2006

Map produced by ERM Vancouver Island Services Centre for the Clayoquot Sound Planning Committee

Fortune Channel Planning Unit Reserves and Harvestable Areas, including Special Management Zones

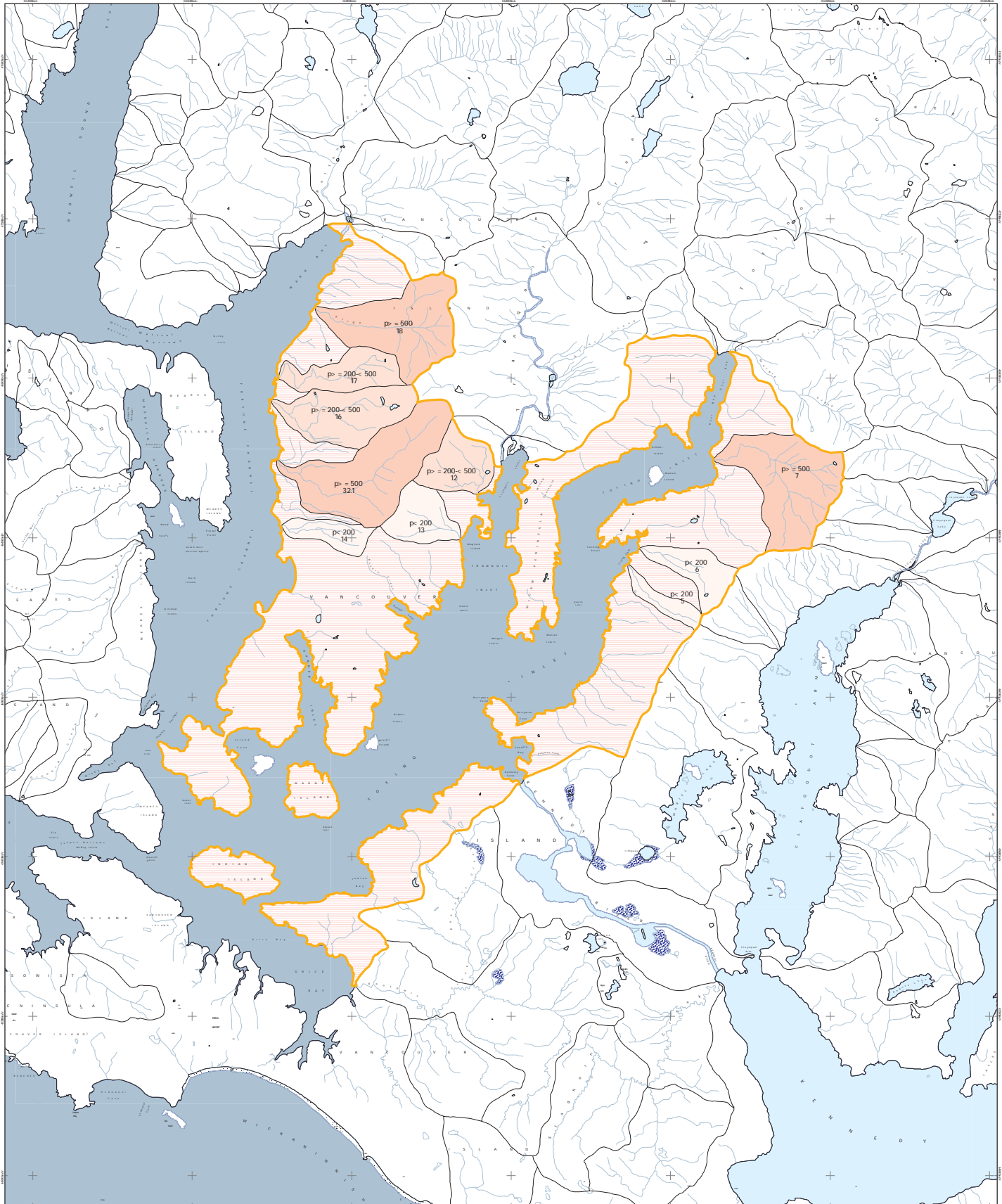















- Reserve Polygons
- Special Management Zones within Harvestable Areas
- Harvestable Areas
- TRIM streams
- Planning Unit Boundary

0 1 2 3 4 Kilometers

Albers Equal Area projection
NAD83

Fortune Channel Planning Unit Watershed Rate of Cut Limits



- | | | | | | |
|-------------------------------------------------------------------------------------|----------------------------------|-------------------------------------------------------------------------------------|----------------------------|-------------------------------------------------------------------------------------|-----------------------------|
|  | primary -not a watershed |  | secondary -residual |  | tertiary > = 500 hectares |
|  | primary -residual |  | secondary < 500 hectares |  | quaternary < 500 hectares |
|  | primary < 200 hectares |  | secondary > = 500 hectares |  | quaternary > = 500 hectares |
|  | primary > = 200 - < 500 hectares |  | tertiary -residual | | |
|  | primary > = 500 hectares |  | tertiary < 500 hectares | | |

Albers Equal Area projection
NAD83

May 15, 2006

Map produced by LMB Vancouver Island Service Centre for the Clayoquot Sound Planning Committee