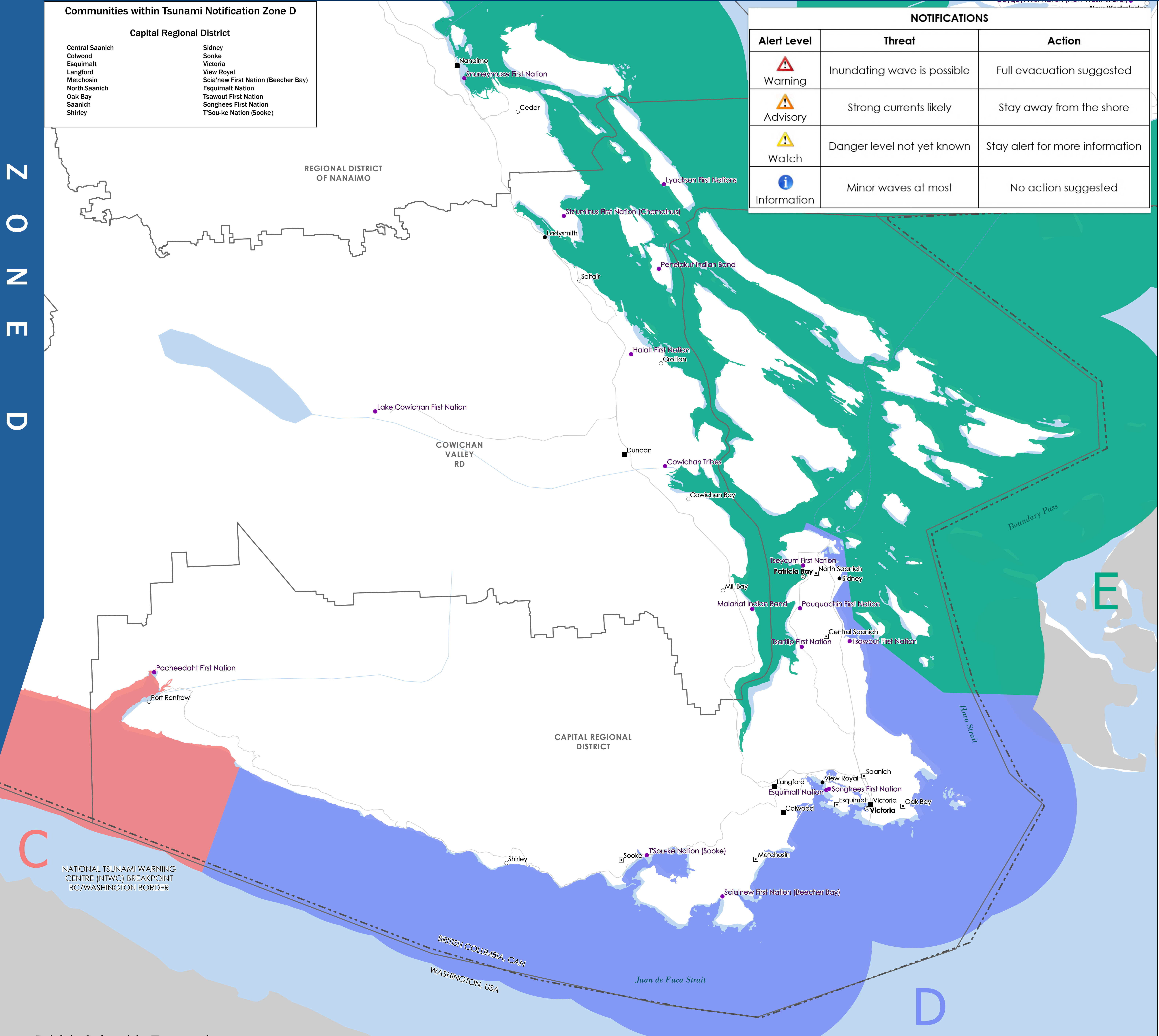


TSUNAMI NOTIFICATION ZONES - BRITISH COLUMBIA

Z
O
N
E
D

- Communities within Tsunami Notification Zone D**
- | Capital Regional District | |
|---------------------------|------------------------------------|
| Central Saanich | Sidney |
| Colwood | Sooke |
| Esquimalt | Victoria |
| Langford | View Royal |
| Metchosin | Sca'new First Nation (Beecher Bay) |
| North Saanich | Esquimalt Nation |
| Oak Bay | Tsawout First Nation |
| Saanich | Songhees First Nation |
| Shirley | T'Sou-ke Nation (Sooke) |

NOTIFICATIONS		
Alert Level	Threat	Action
Warning	Inundating wave is possible	Full evacuation suggested
Advisory	Strong currents likely	Stay away from the shore
Watch	Danger level not yet known	Stay alert for more information
Information	Minor waves at most	No action suggested



British Columbia Tsunami Notification Zones

Tsunamis are rare, but serious events. Many areas of coastal B.C. may be threatened in the event of a tsunami. However, it is generally accepted by scientific and technical experts that Victoria, eastern Vancouver Island, Vancouver and the lower mainland are low risk areas.

To ensure that all B.C. communities receive appropriate messaging, that is easily understandable using provincial landmarks, Emergency Management BC has divided the province into five (5) zones for notification purposes. These zones are reflected on this map in different colours.

All tsunami notifications prepared by the Province will refer to these five zones. Each of the five designated zones includes all islands and inlets within the location descriptive.

		ZONE A – NORTH COAST AND HAIDA GWAIL
		ZONE B – CENTRAL COAST AND NORTHEAST VANCOUVER ISLAND COAST (INCLUDES KITIMAT, BELLA COOLA, AND PORT HARDY)
		ZONE C – THE OUTER WEST COAST OF VANCOUVER ISLAND (FROM CAPE SCOTT TO PORT RENFREW)
		ZONE D – THE JUAN DE FUCA STRAIT (FROM JORDAN RIVER TO GREATER VICTORIA INCLUDING THE SAANICH PENINSULA)
		ZONE E – THE STRAIT OF GEORGIA (INCLUDING THE GULF ISLANDS, GREATER VANCOUVER AND JOHNSTONE STRAIT)

Ministry of Land, Water and Resource Stewardship. Where applicable, Base data provided by the Government of BC (2022). The Minister and the Crown provides this information without warranty or representation as to any matter including but not limited to whether the data/information is correct, accurate, or free from error, defect, danger, or hazard and whether it is otherwise useful or suitable for any use the user may make of it.