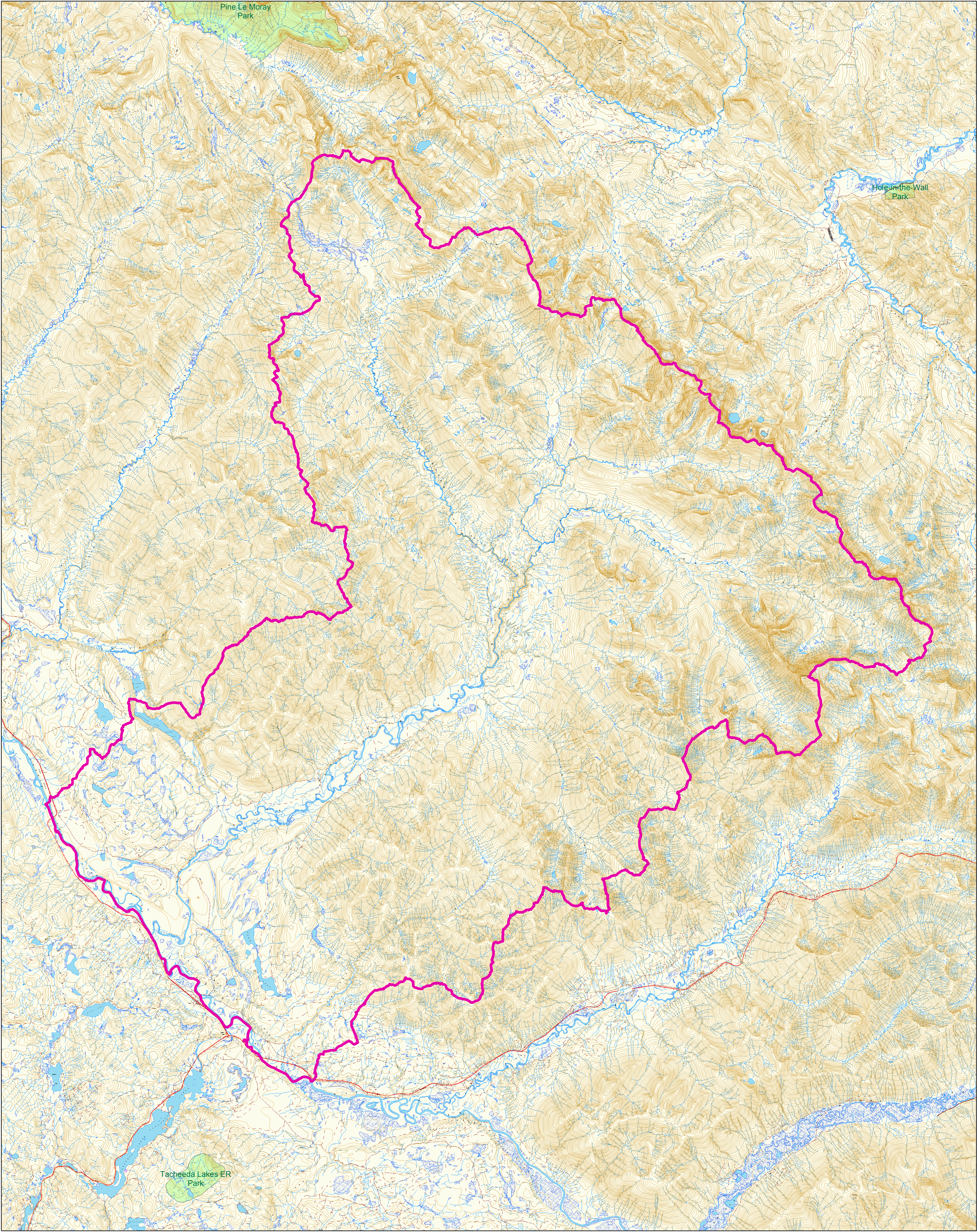
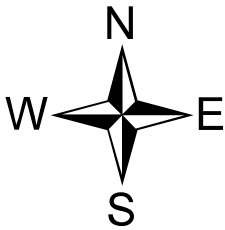


# 2006 / 2007 Moose Zone B of 7-23



## Legend

These maps represent LEH zone boundaries only. For other boundary information including, but not limited to, species closed areas, management unit boundaries, no hunting/shooting areas and motor vehicle restricted areas, refer to the appropriate regulations. Road data is not up to date and roads depicted may not exist. New roads from 1995 onwards are not shown on map.



0 1.25 2.5 5 7.5 10 Kilometers

<b>LEH Boundary</b>	<b>Marsh/swamp</b>	<b>Road, rough</b>	<b>qnpa_bc region.english_name</b>
<b>Contour Lines</b>	<b>Glacier/snowfield</b>	<b>Trail</b>	<b>Built up Areas</b>
<b>FCODE</b>	<b>Transportation Lines</b>	<b>Railway</b>	<b>Cities</b>
<b>Index contour (100m interval)</b>	<b>FCODE</b>	<b>Airfield</b>	<b>tpas_bc region.pa</b>
<b>Intermediate Contour (20m interval)</b>	<b>Highway</b>	<b>Bridge/tunnel</b>	<b>FCODE</b>
<b>Depression</b>	<b>Road, paved</b>	<b>Ferry route</b>	<b>FM94000400</b>
<b>Cultural Lines</b>	<b>Road, unpaved</b>	<b>Municipality</b>	<b>XXXXXXXXXX</b>
<b>FCODE</b>		<b>Water Lines</b>	<b>Municipality</b>
<b>Cultural feature</b>		<b>Watercourse - definite</b>	<b>Terrestrial</b>
<b>Built up area</b>		<b>Watercourses - indefinite</b>	
<b>Transmission line/pipeline</b>		<b>Watercourses</b>	
		<b>Waterbody</b>	
		<b>Ocean</b>	
		<b>Buildings</b>	
		<b>Indian Reserves</b>	

Produced for:  
**LEH**

Produced by:

**Land Information BC**

**Integrated Land Management Agency  
Corporate Information Services**

Filepath: q:\projects\clients\wlap\leh\arcgis\_06\i45.mxd  
Projection/Datum: BC Albers  
Date Created: 2006, March 29  
Created by: Victoria Service Center, JD