



Ministry of
Transportation
and Infrastructure

Welcome!

MoTI Splat sin Community Workshop

Planning Work Overview

- Two plans in development:

MoTI Hwy 97A
Enderby Splat
Transportation Plan

Splatsin Integrated
Land Use and
Transportation

Splatsin Integrated Land Use and Transportation Network Plan

Splatsin IR#2 Highway 97A



Study Purpose

Develop an Integrated Land Use and Transportation Network Plan to study the whole transportation network and determine how to make driving, walking and cycling more efficient and safer and to protect and promote existing and potential economic development initiatives.

- Key focus on Highway 97A, but all roads on Splatsin IR#2 are being studied.
- Reflect the land use principles of Petinesa Xatáqs: Splatsin Comprehensive Community Plan and broader Secwepemc values and goals.
- Yucwmenlúcwu involved to evaluate potential improvement solutions and impacts to environment, forestry and archaeologically sensitive areas.



Study Objectives

- Focused on developing a land use vision and supporting transportation network plan for IR#2.
- Investigate potential future land developments and forecast impacts and needs for the transportation network.
- Evaluate and provide comments and recommendations to MoTI on proposed Highway 97A solutions.
- Identify transportation network improvements on IR#2 for all modes of travel.
- Engage with Splatsin community members to listen, gather input and incorporate input into the transportation solutions.
- Document study findings and recommendations into an actionable plan.



Study Process

Splatsin IR#2 Integrated Land Use and Transportation Plan

**WE ARE
HERE**

Splatsin
Community
Meeting #1

Splatsin
Community
Meeting #2

Transportation
and Land Use
Information
Review

Develop
Transportation
Network
Scenarios

Evaluate and
Recommend
Preferred
Transportation
Plan

Integrate Land
Use Code / Vision
with
Transportation
Plan

Develop
Implementation
Strategy

Present Findings
to Splatsin
Council
and
Final Reporting

MoTI
Workshop

MoTI Public
Open House

MoTI Public
Information Session





Highway 97A Enderby / Splatstin Transportation Plan

Splatstin Community Workshop

July 17, 2019



Ministry of
Transportation
and Infrastructure

1 Study Overview

2 Work to Date

3 Option Development Breakout Session

4 Wrap Up & Next Steps

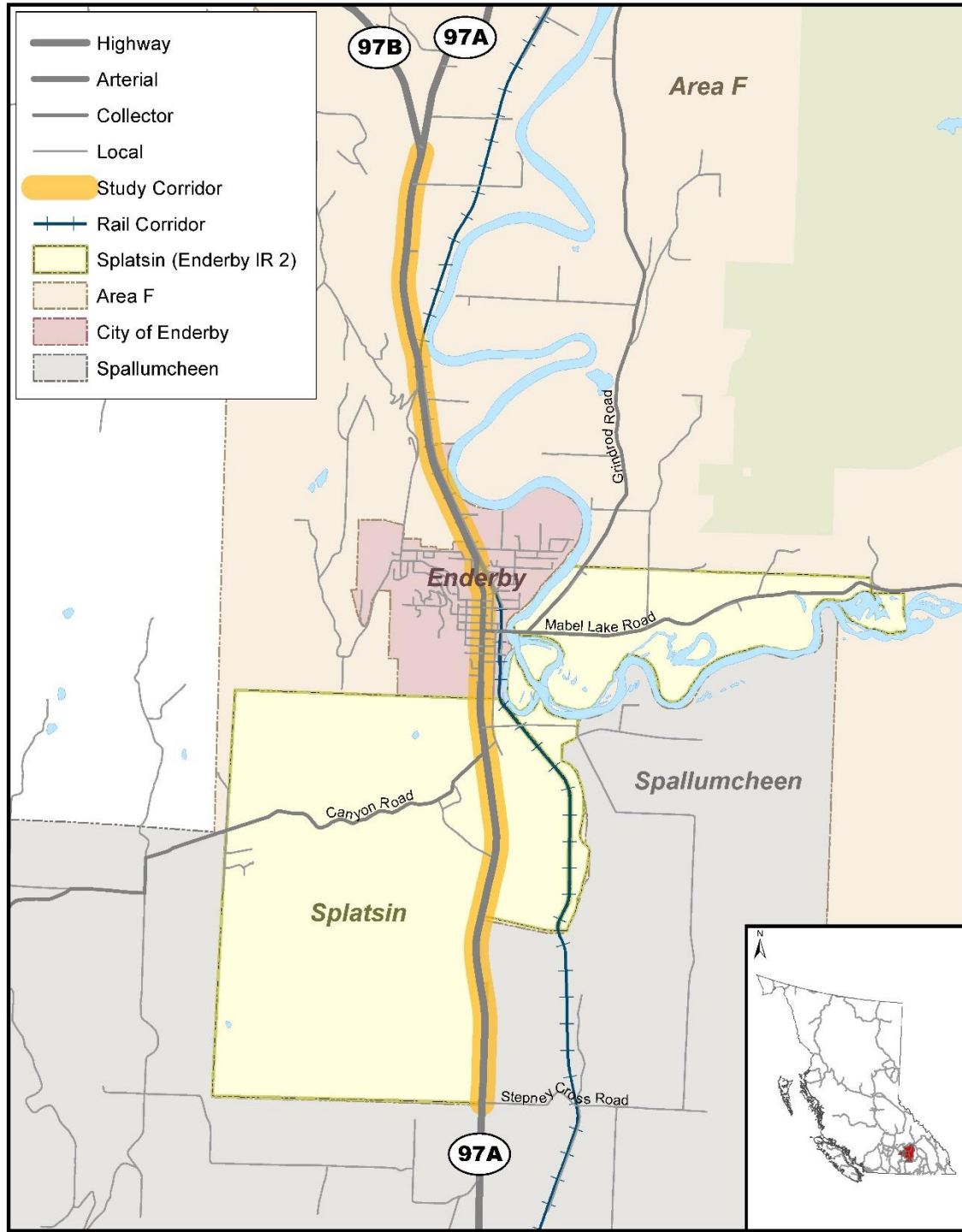
Study Overview

Study Purpose

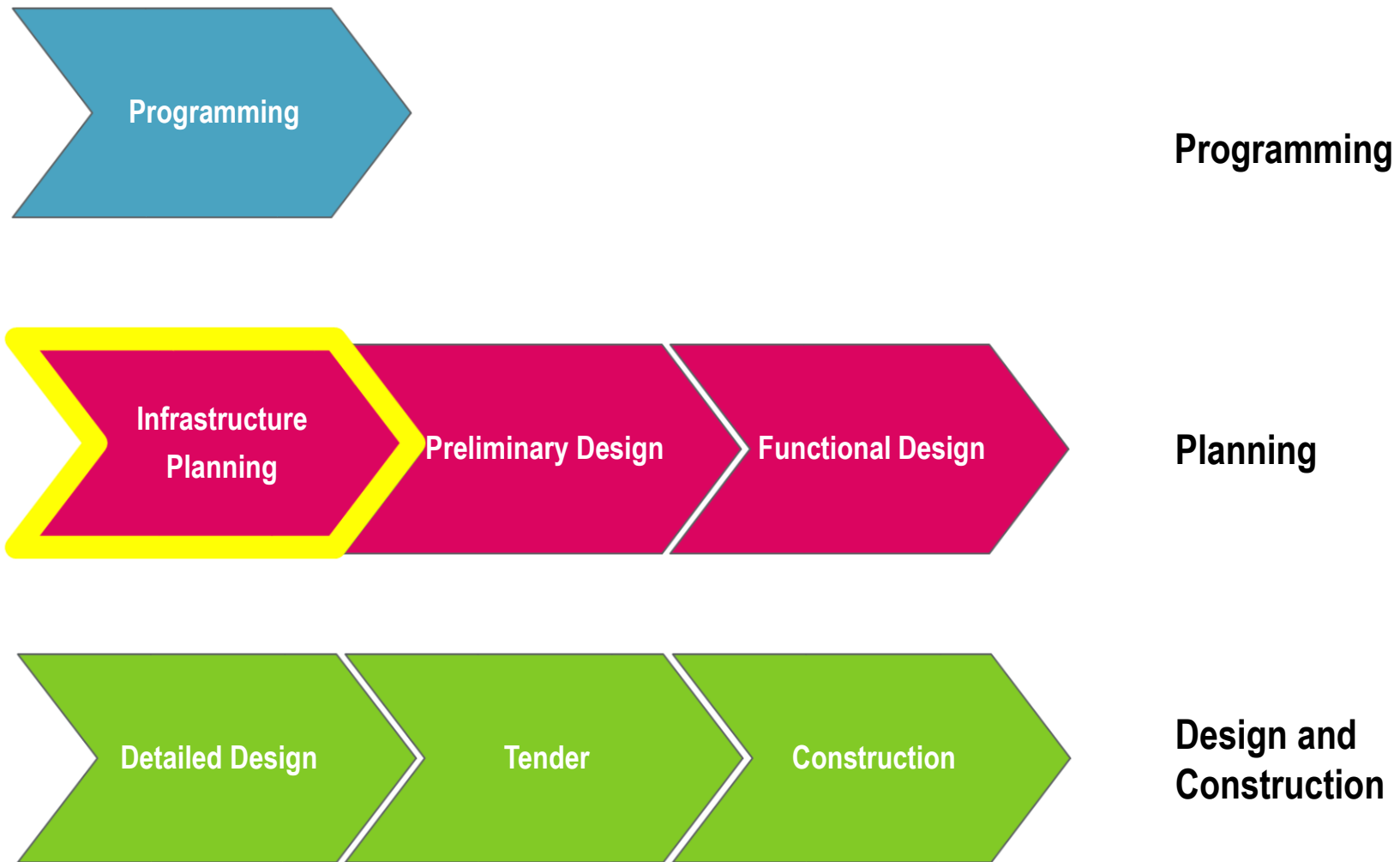
- Highway 97A is part of the National Highway System, and connects communities and markets in the North and Central Okanagan
- Updating previous analysis is required to inform short, medium and long-term solutions over a 25 year period

Study Area

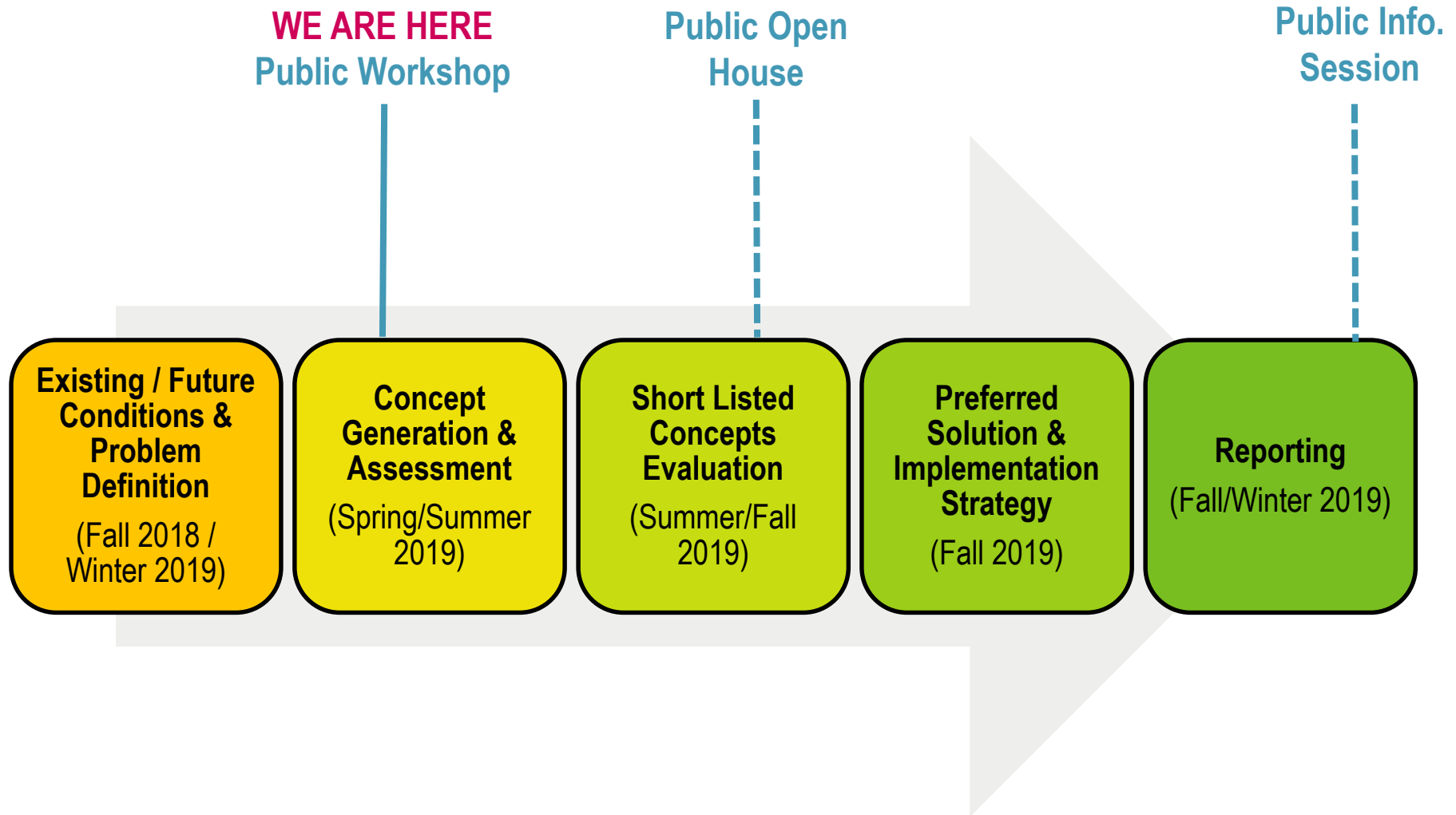
- Highway 97A Corridor from:
 - Highway 97A / Highway 97B junction (north end)
 - Stepney Cross Road (south end)



Project Delivery Overview



Study Process



Previous Studies


- North Okanagan Shuswap Corridor Management Plan (2001)
- Highway 97A Enderby Concept Development (2005)
- Highway 97 Bypass Assessment (2011)
- BC Transit North Okanagan Transit Future Plan (2014)
- Enderby Data Collection Program (2018)
- Highway 97A / Canyon Road Intersection Study (2019)
- Highway 97A Lansdowne to Stepney

Role of the Highway

“The role of Highway 97A in the study area is to provide safe and efficient mobility for through traffic, balanced with the community access and connectivity needs of the Enderby and Splatstin communities.”

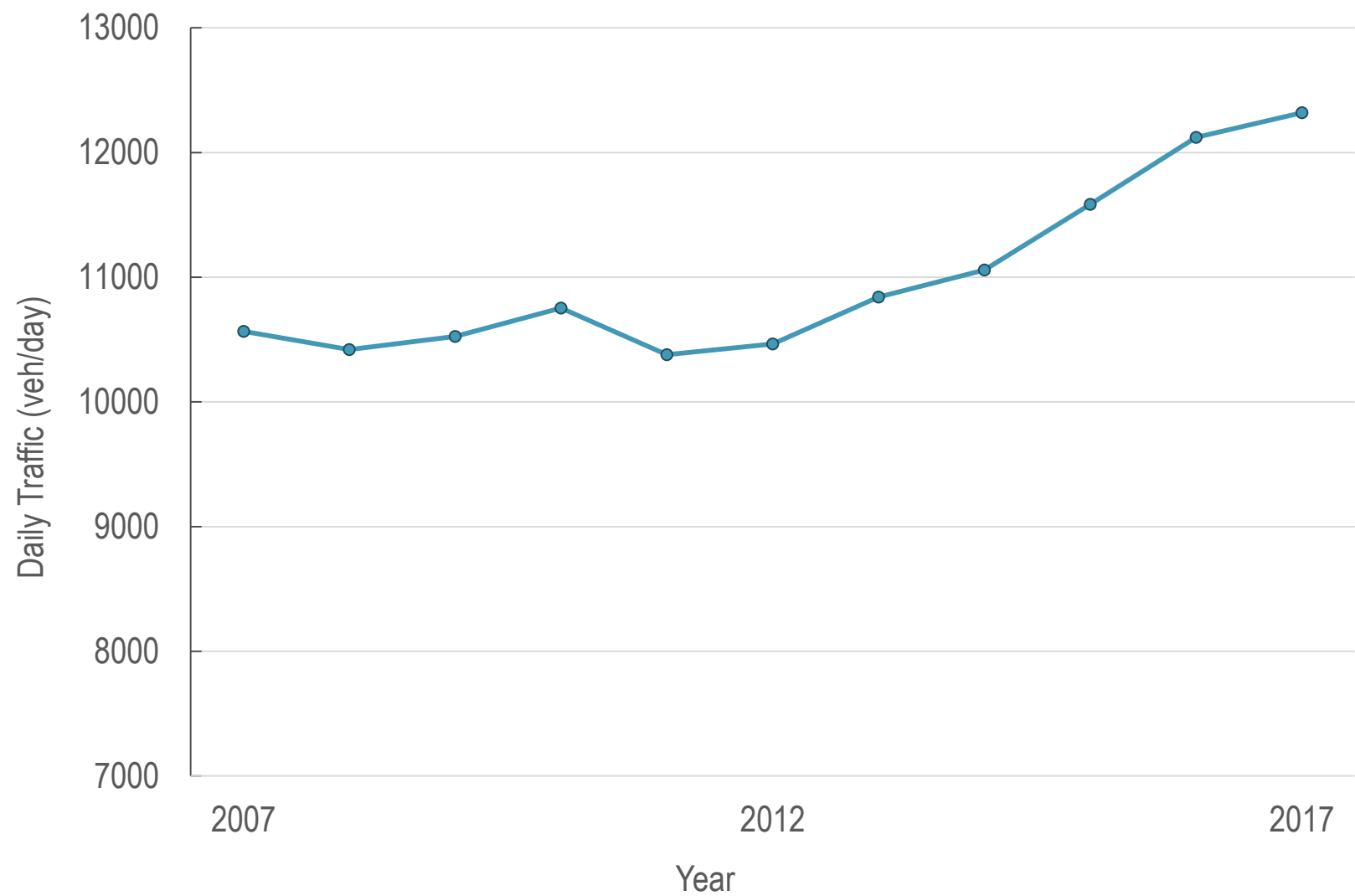


Guiding Principles

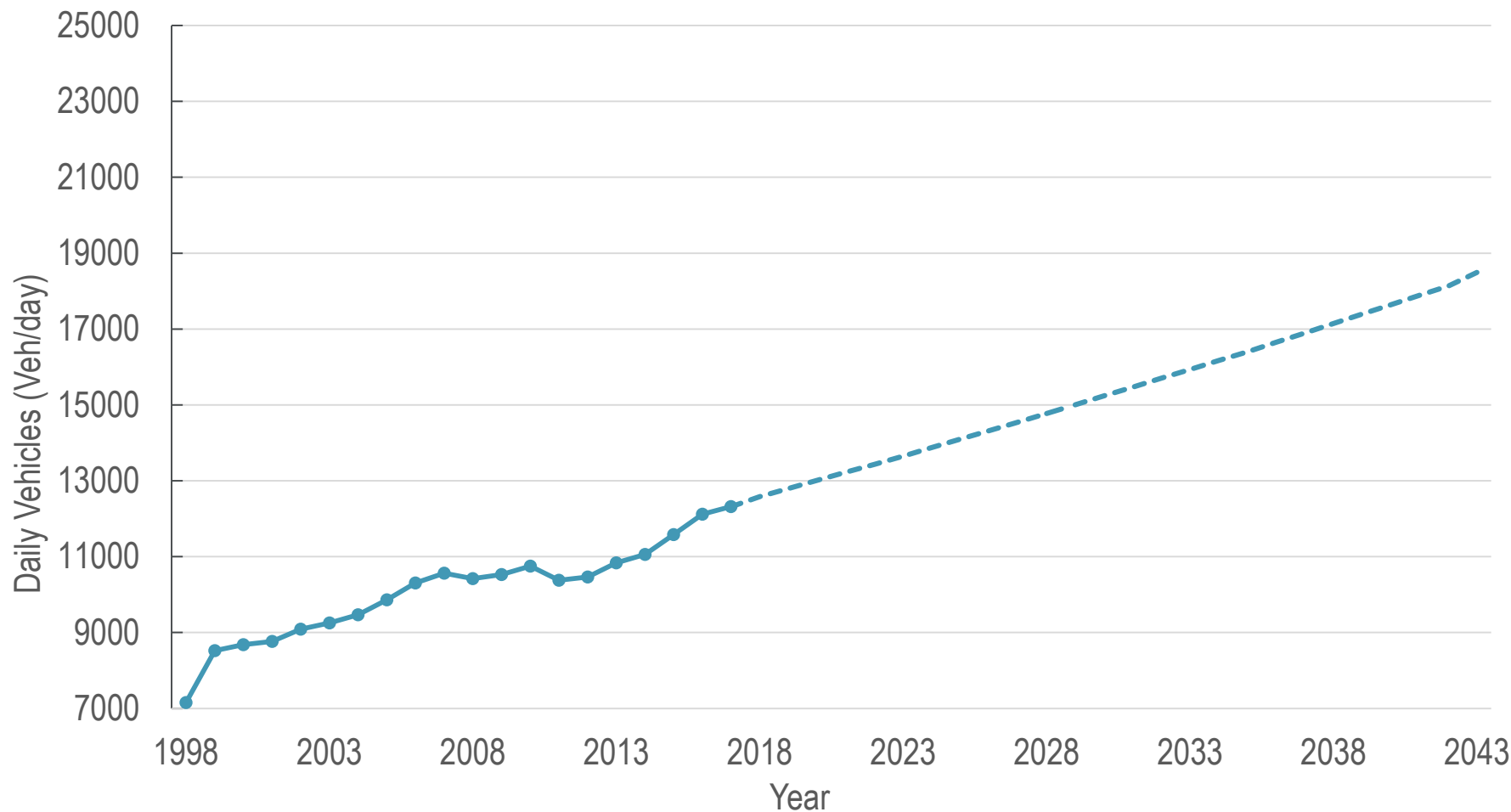
1. Safe
 2. Efficient Mobility
 3. Multi-Modal Corridor
 4. Economic Development and Property Access
 5. Local Connectivity
- 

Work to Date

Historical Traffic Growth (South of Study Area)

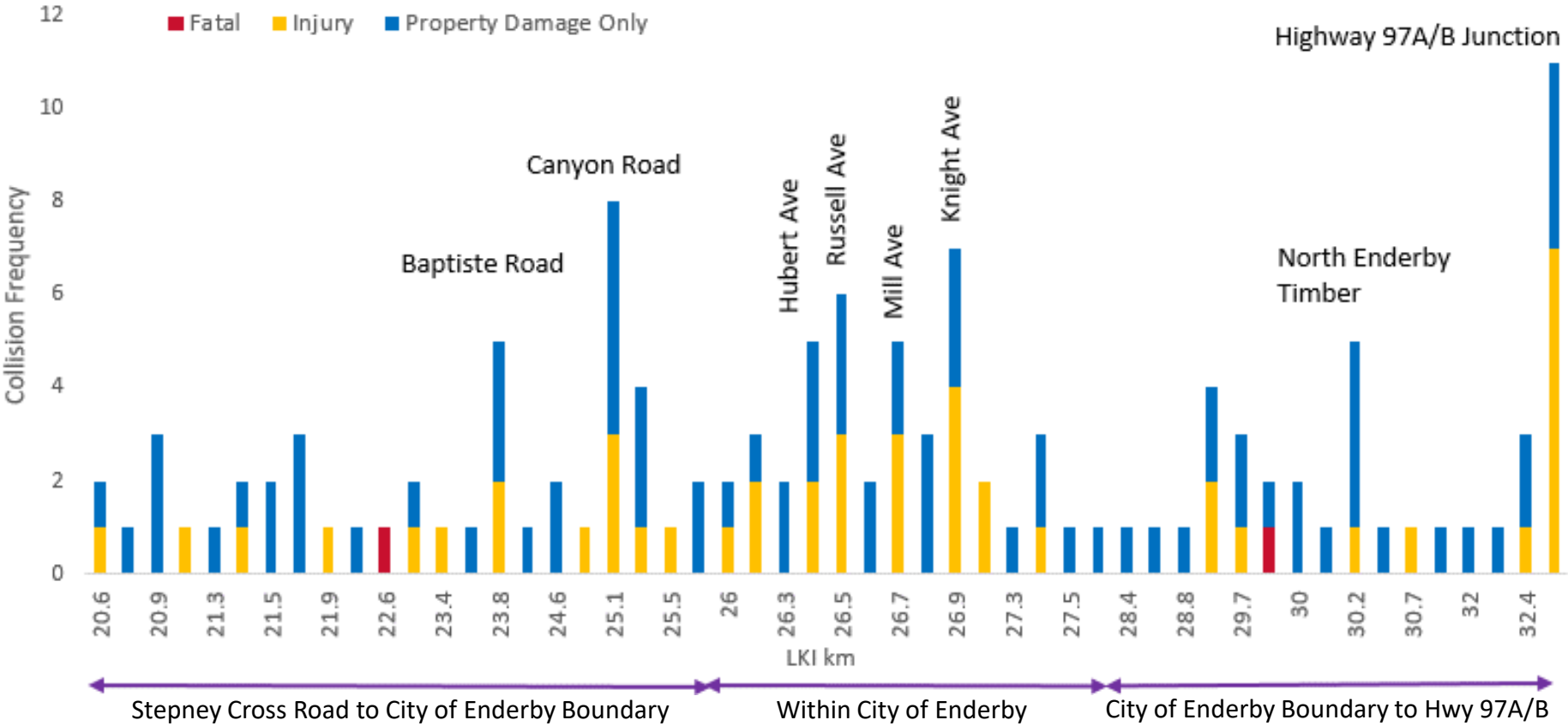


Traffic Forecast (Average Daily Traffic)



North of Stepney Road

Safety – Reported Collisions (2012 – 2016)



Current Highway Operation

▪ North and South of Enderby

- Highway near capacity– very few gaps in traffic; most of the time is spent following other vehicles
- Turns from side streets are difficult, particularly in summer

▪ Within Enderby

- Signalized intersections at Highway 97A and Mill Avenue and Hubert Avenue
- Some intersection movements with moderate delays, but overall intersections work well
- Left turns onto the highway at unsignalized intersections can have long delays



Community Connections

▪ Walking and Cycling

- A trail is provided on the west side of Highway 97A, south of Enderby
- Areas of poor pedestrian and cyclist comfort
- High traffic volumes make crossing the highway difficult except at traffic signals or marked crosswalks

▪ Transit

- Route 60 – to Armstrong and Vernon
- Route 11 – to Salmon Arm (Wed. only)
- ~20 people/day commuting via transit

▪ Business and Local Network Access

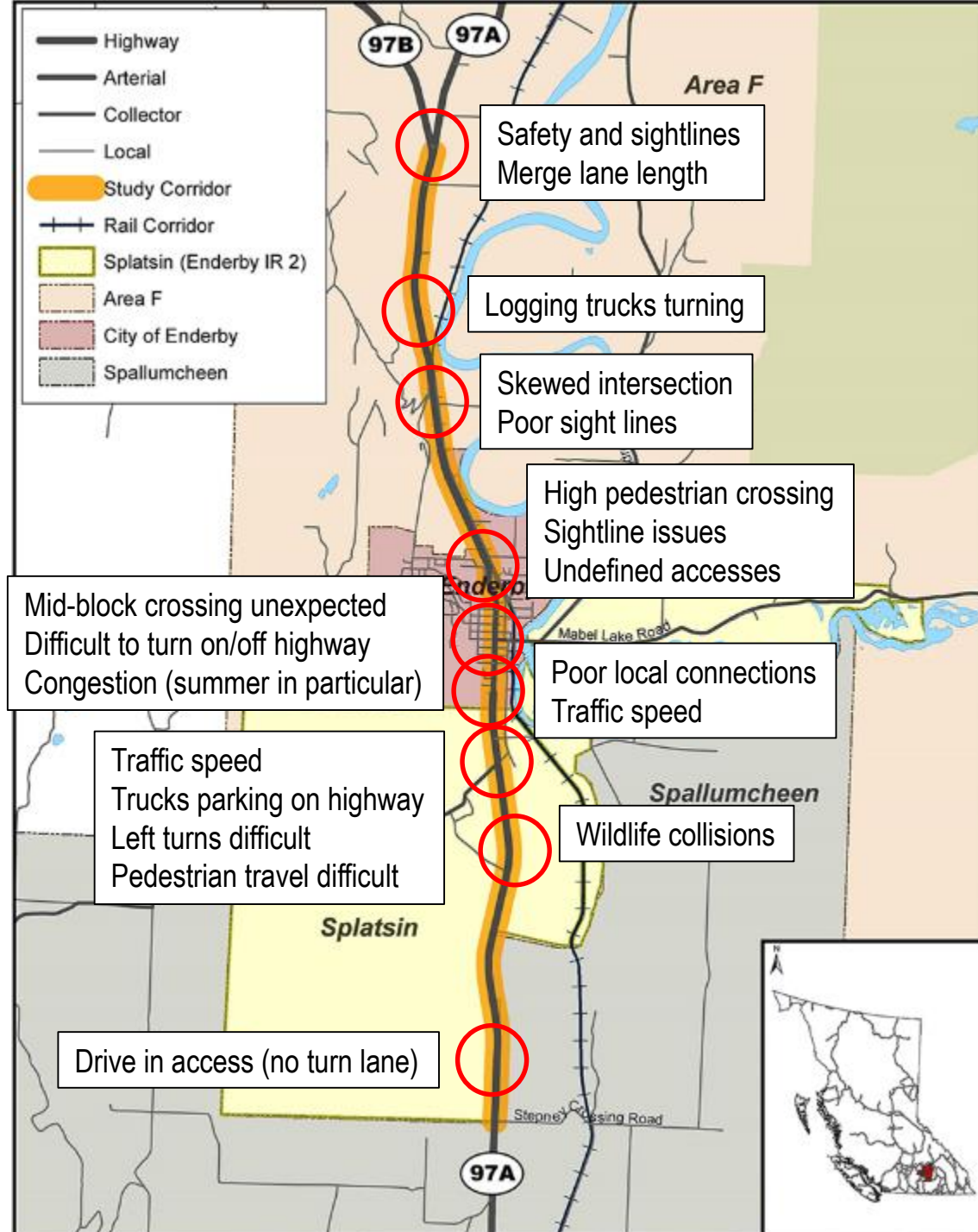
- High delays at unsignalized intersections
- Lefts turns to and from the highway are difficult
- Highway is a barrier to local movement



Issues Identification

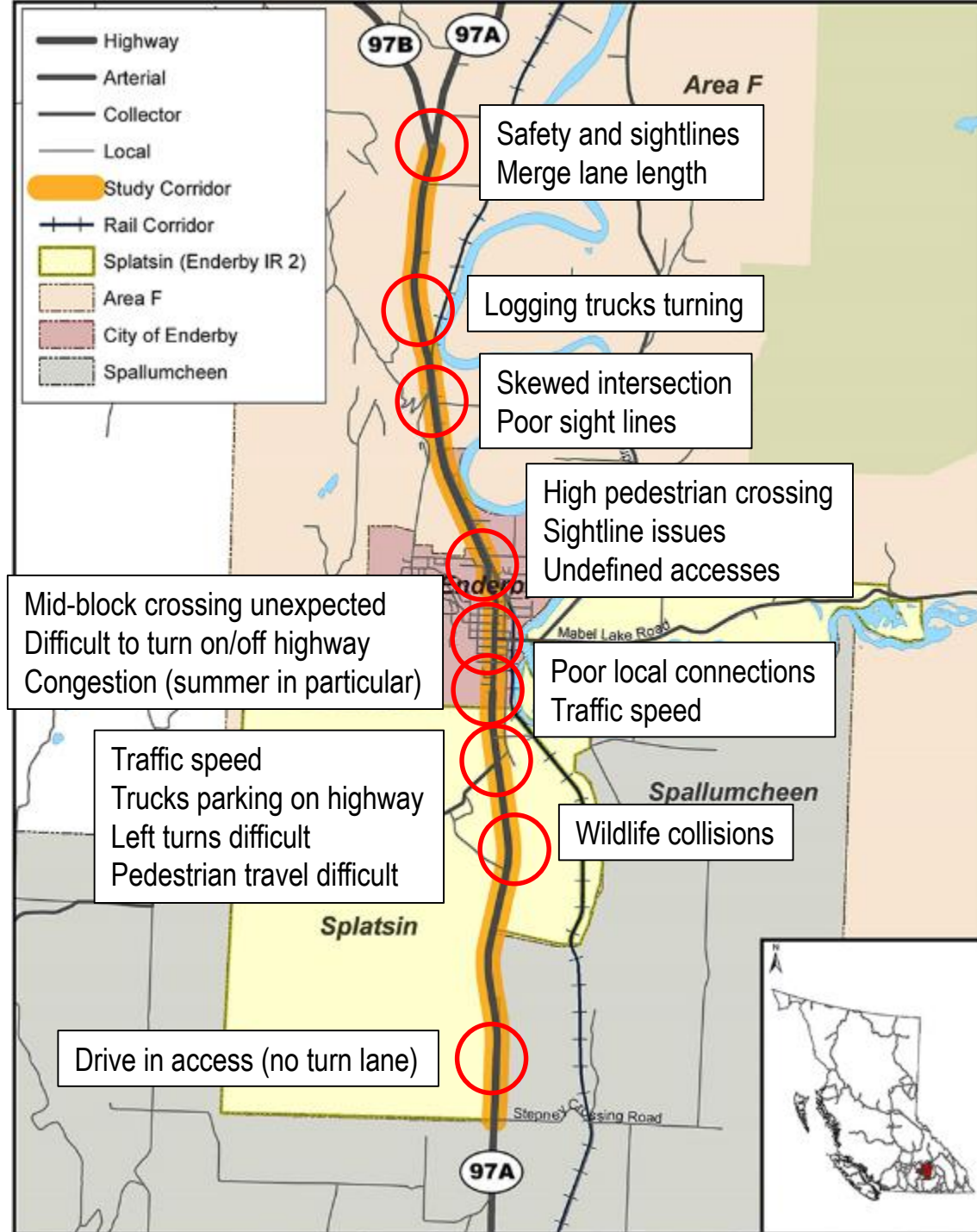
- Identified by Technical Advisory Committee (TAC) and Community Liaison Committee (CLC)
- Types of Issues:
 - Safety and comfort
 - Vehicle speeds
 - Long delays at intersections
 - Pedestrian and bike travel
 - Community connectivity
 - Business access
 - Future development areas

Map shows examples of the issues identified by TAC and CLC – it is not a complete listing of all issues



Issues Identification

Are there any missing issues?



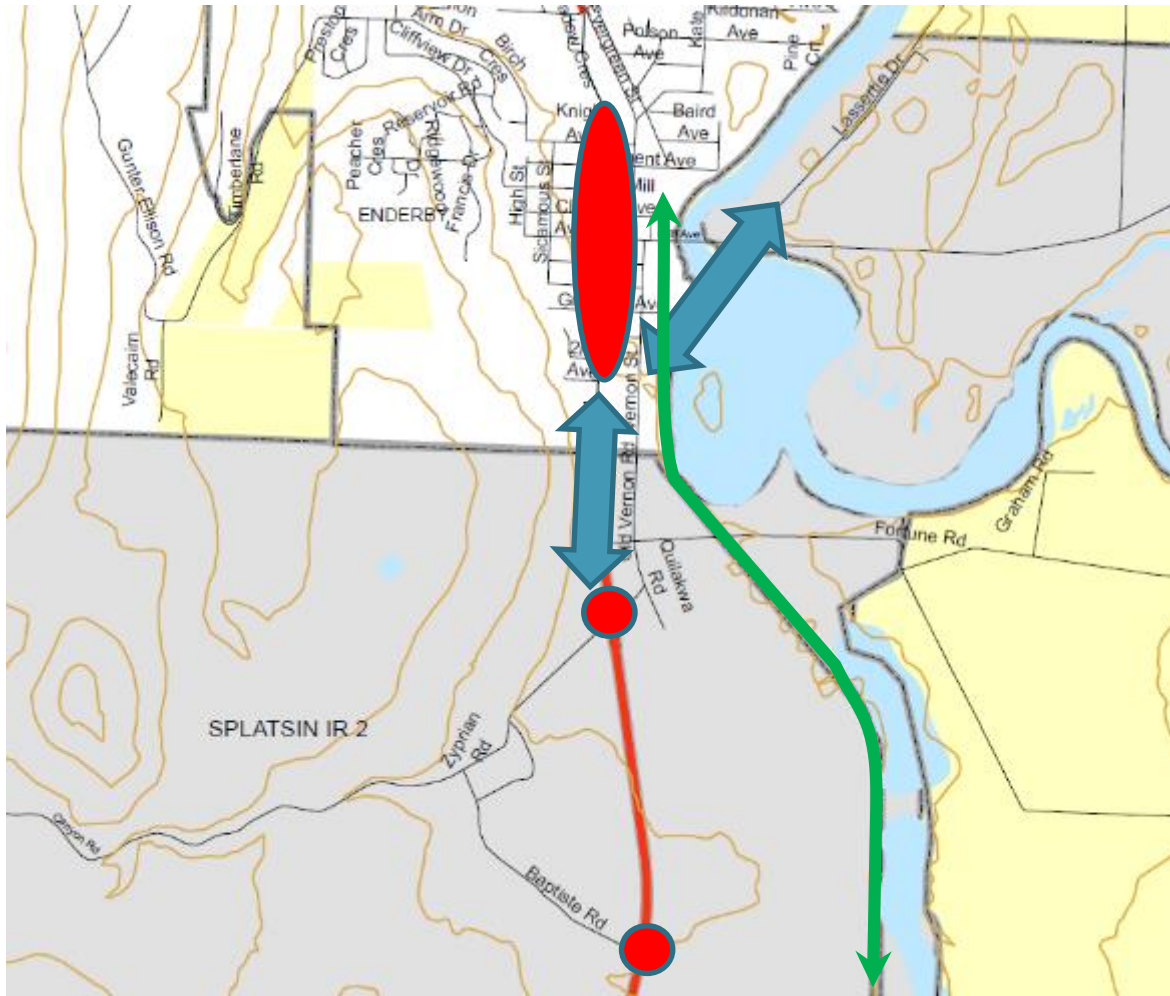
Breakout Sessions

Breakout Activity 1 – Canyon Road



On the map, suggest possible long term concepts for the intersection of Highway 97A / Canyon Road. Business access, vehicle movement and pedestrian crossing should be considered, along with other important issues you want to highlight.

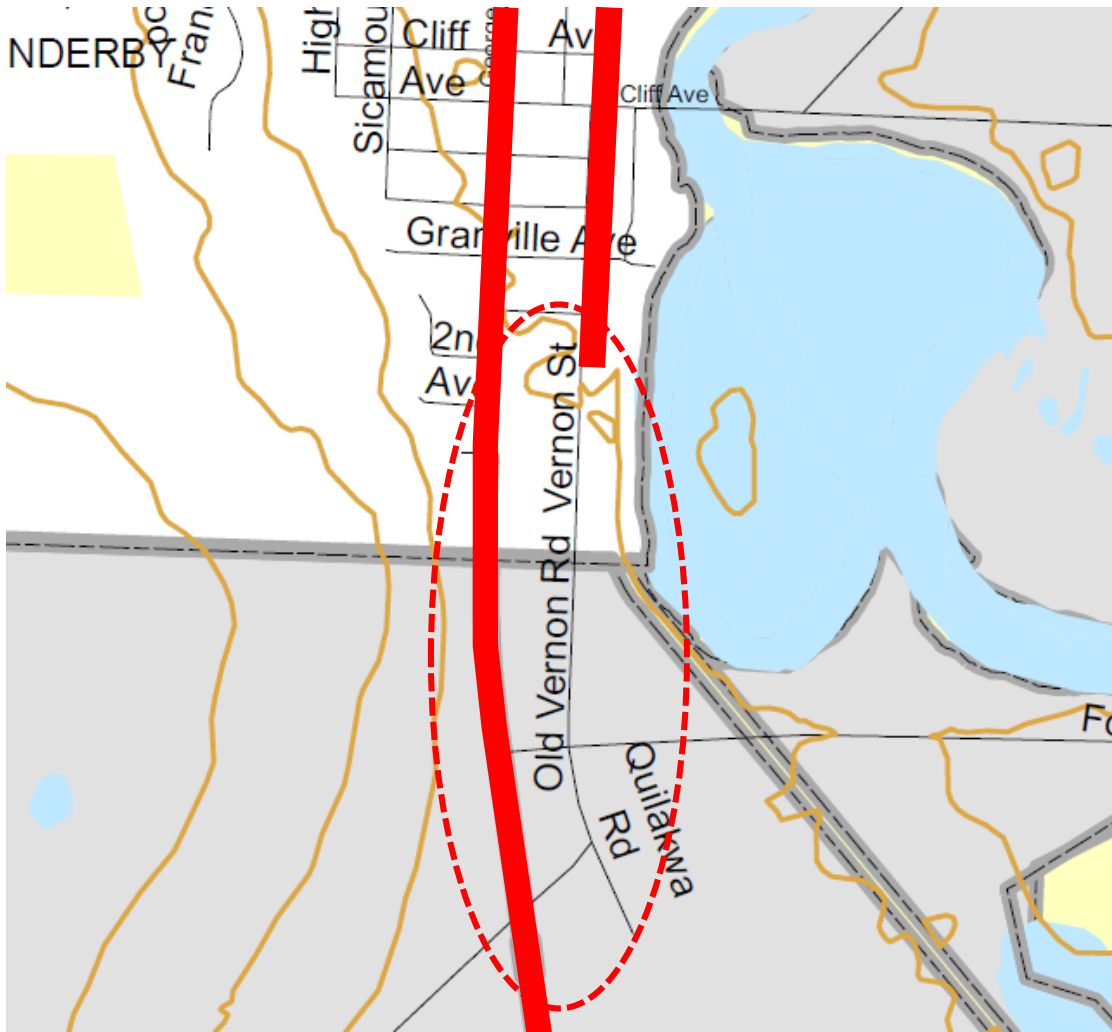
Breakout Activity 2 – Walking and Cycling



Identify challenges for walking and cycling and suggest possible solutions. Important considerations include:

- Key connections
- Safe highway crossings
- Role of the rail trail

Breakout Activity 3 – Couplet

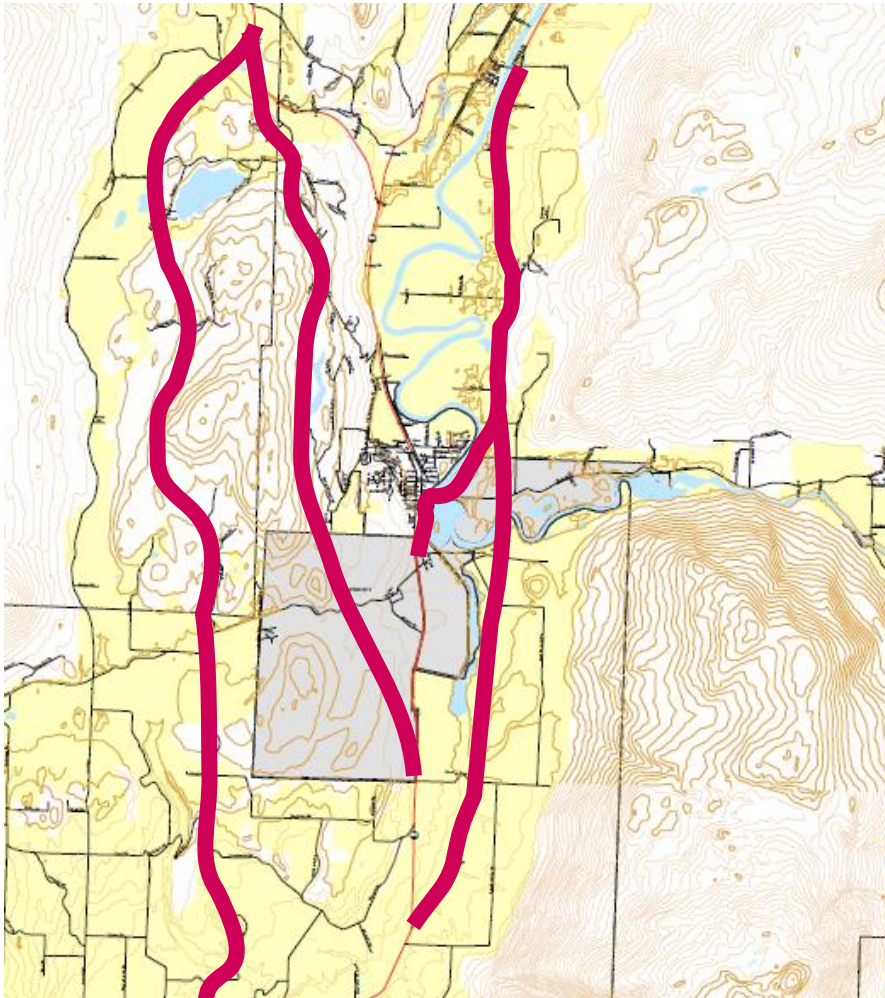


Some of the ideas that have been suggest in the past include:

- Couplet connection to Old Vernon Road or rail corridor
- Realignment of highway to Old Vernon Road or rail corridor

Suggest ideas to connect the existing Highway 97A to the rail corridor or Old Vernon Road

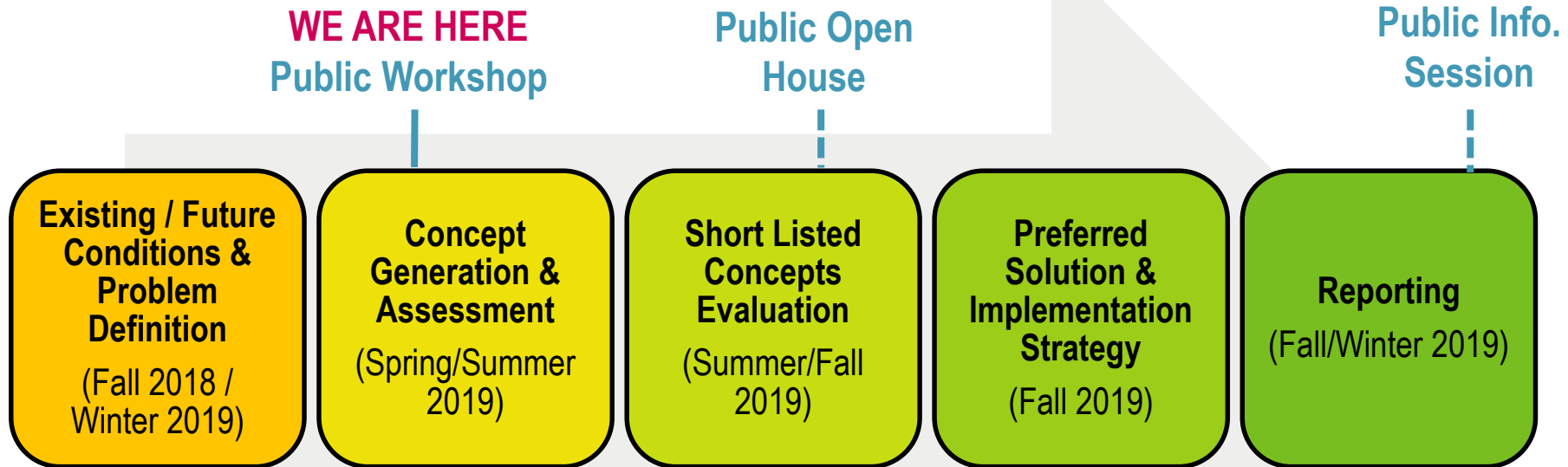
Breakout Activity 4 – Alternate Corridor



Past studies have considered new routes for Highway 97A and/or 97B. Are there new corridors that we should consider for the highway?

Next Steps

Next Steps



Concept Generation and Assessment

- Finalize Options Long List
- Filter Options
 - Fatal flaws
 - Do not address problems
 - Unlikely to be competitive with similar options
- Formalize short list

Short Listed Concepts Evaluation

- Evaluation framework
- Concept evaluation
- Benefit-cost assessment
- Focused meetings with affected property owners
- Open house (Fall 2019)