

Location Services In Action

Digital Platforms and Data Division
Data Systems and Services Branch
2020

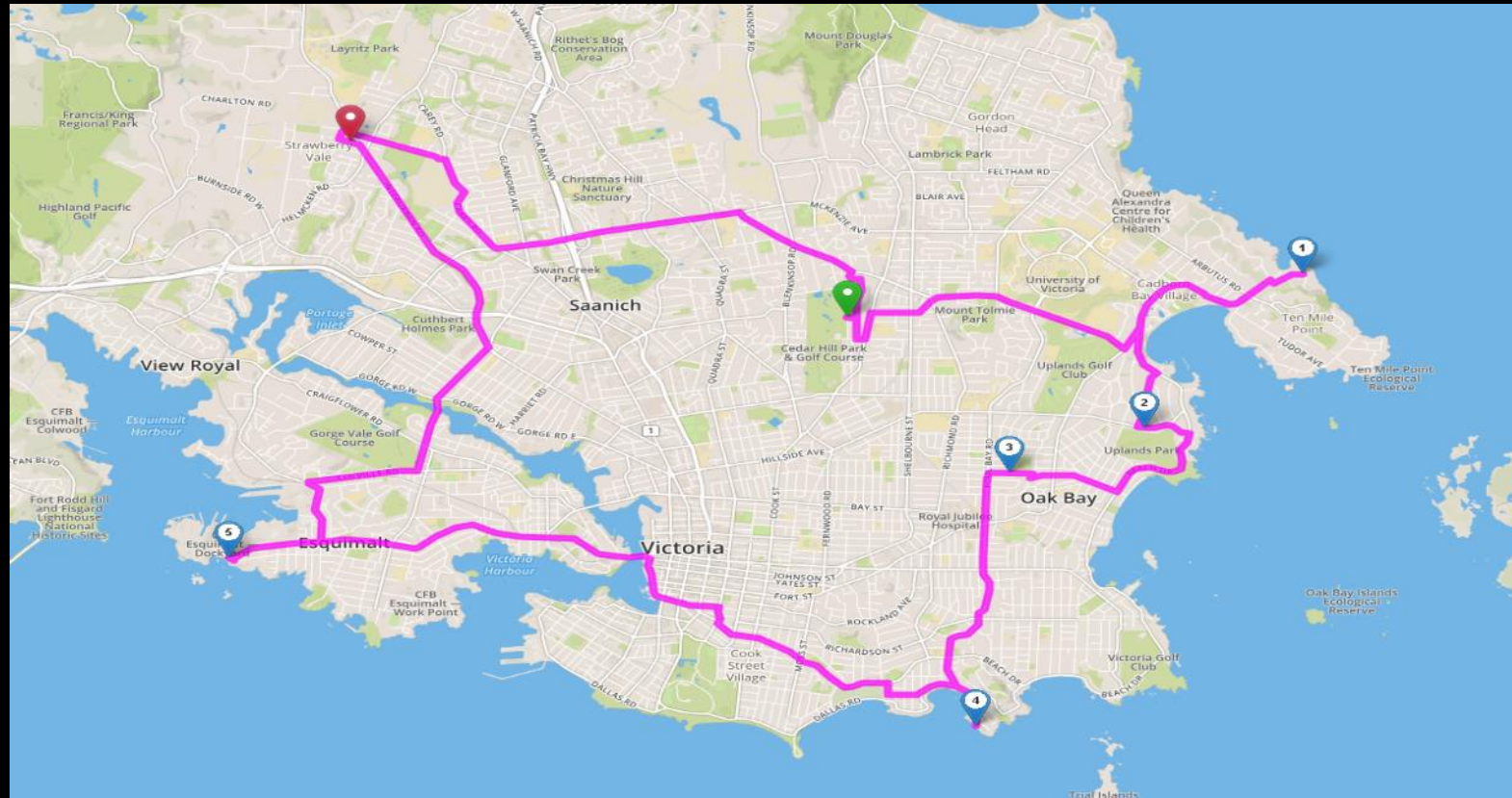


Ministry of
Citizens' Services

Agenda

- ① Introduction to Location Services
- ② BC Route Planner
 - Online resources
 - Making a request
 - Understanding the response
 - Python scripts
- ③ BC Address Geocoder
 - Common Features and Proximity Searches
 - Python script

BC Route Planner



Fastest/shortest route | Turn by turn directions
Nearest by road | Optimal stop order

API Overview

- **directions**: Directions, path, distance, travel time between a series of points
- **distance**: Distance and travel time between two points
- **route**: Path, distance and travel time between a series of points

Scope for today

- **directions:**
 - **directions**
 - **optimalDirections**
 - **truck/directions**
- **distance:**
 - **distance/betweenPairs**



BC Route Planner

Online Resources

Getting started

Location Services Homepage

<https://data.gov.bc.ca/>

- -> Geographic Services
 - -> **Location Services**

Location Services in Action

- <https://ols-demo.apps.gov.bc.ca/index.html>

Address Route Businesses by Tag Businesses by Name

↑↓

Address

*📍✕

↑↓

Address

*📍✕

+ Click on Map For Coordinates 📍 ✕

☒ Fastest

☐ Shortest

☐ Round Trip

☐ Optimize Order

☐ Nearest Stop

☐ Ferry Schedules

☐ Traffic

☐ Events

☒ Global Distortion Field

☒ Local Distortion Field

☐ Time Dependent

☒ Turn Restrictions

☒ Crossing Costs

☒ Turn Costs

Start Date/Time: 2020-04-09 1:30pm

☐ Correct Side

☒ Truck Mode

☐ Follow Truck Route

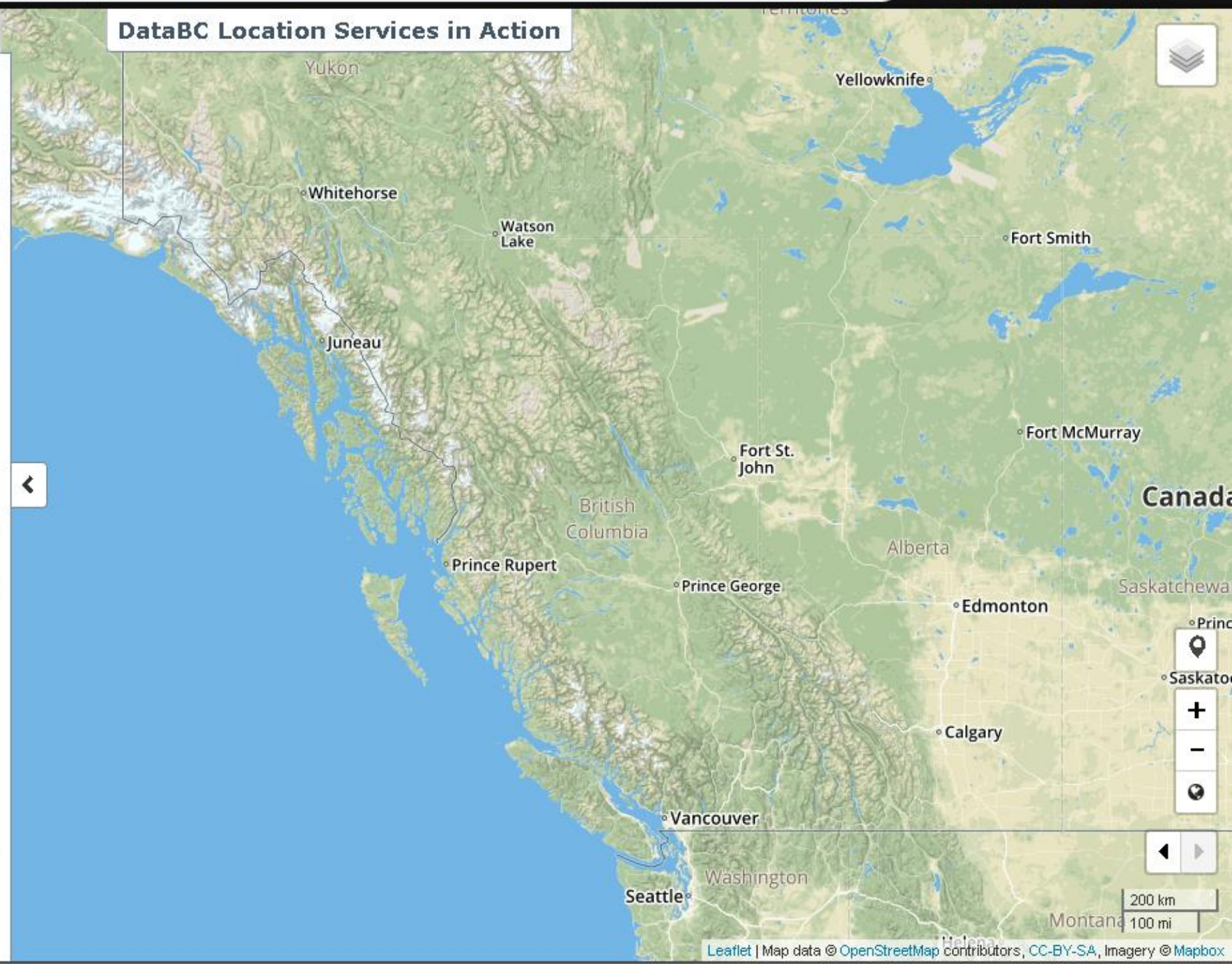
Truck Route Multiplier: 9

Height OAH (m):

Width OAW (m):

Length OAL (m):

Weight GVW (kg):



Open development

GitHub repo:

- <https://github.com/bcgov/ols-router>
 - Explore the 'gh-pages' branch for more documentation

Monitor progress:

- <https://github.com/bcgov/ols-router/issues>

bcgov / ols-router

Unwatch 13 Star 7 Fork 6

Code Issues 137 Pull requests 1 ZenHub Projects 0 Wiki Security 0 Insights Settings

BC Advanced Route Planner <https://bcgov.github.io/ols-router/>

Edit

api directions-api directions-algorithm Manage topics

313 commits 6 branches 0 packages 3 releases 1 environment 6 contributors

Branch: master New pull request

Create new file Upload files Find file Clone or download

Switch branches/tags

Find or create a branch...

Branches Tags

dev default
gh-pages
✓ master
qa
repo-mountie/add-license
tools

	behind dev.	Pull request Compare
		Latest commit 374e41a on Apr 21
	ment out slack notifications	3 months ago
	for infinite loop around internal turn restriction segments	2 months ago
	for infinite loop around internal turn restriction segments	2 months ago
	for infinite loop around internal turn restriction segments	2 months ago
	for infinite loop around internal turn restriction segments	2 months ago
	al commit of new features for 2.1.0	3 months ago
	al code commit	17 months ago
COMPLIANCE.yaml	Add compliance audit file	4 months ago
Dockerfile	Update Dockerfile	9 months ago
Jenkinsfile	change quotes	3 months ago
pom.xml	- Fix for infinite loop around internal turn restriction segments	2 months ago
sonar-project.properties	Create sonar-project.properties	10 months ago

Help people interested in this repository understand your project by adding a README.

Add a README

3 Issues - 0 Story Points

New Issues

ols-router #232

+4 Add missing license

ols-router #255

in route and directions resources, HTML format missing enable, partition, and partitions fields

bug low priority

ols-router #256

In truck resources, followTruckRoute should default to true

medium priority usability

74 Issues - 84 Story Points

Icebox

ols-router #184

NFR - CICD with github actions

ROUTE PLANNER deployment enhancement estimate needed medium priority

ols-router #251

interesting cases

ROUTE PLANNER configuration data

ols-router #226

Don't generate U-turn restrictions that are already covered by basic turn restrictions

4 Routable BC Maker

ols-router #244

Add turn counts to test frameworks

ROUTE PLANNER enhancement low priority

ols-router #241

Add support for fold testing in router QA tools

0 Issues - 0 Story Points

Backlog

Backlog

Add description +

13 Issues - 1 Story Point

In Progress

ols-router #259

Create TransLink data flow diagram

ROUTE PLANNER task

ols-router #260

Can't route into Delta Port Entrance --

ROUTE PLANNER bug data low priority

ols-router #258

Update South Shore access

ols-router #245

Gaps in truck routes on Mt Seymour Parkway and in Maple Ridge

ROUTE PLANNER configuration

ols-router #243

Gap in truck route at River Rd and No. 2 Rd, Richmond

ROUTE PLANNER data

ols-router #254

Some ramps not classified as

0 Issues - 0 Story Points

Review/QA

Review/QA

Add description +

38 Issues - 95 Story Points

Done

ols-router #261

Verify March 2020 data is being used by router in production

QA ROUTE PLANNER prepared data

ols-router #257

Migrate Route Planner API 2.1.0 to production

Route Planner 2.1

ROUTE PLANNER admin app high priority prepared data task

ols-router #242

Router keeps truck away from residential area near destination

ROUTE PLANNER configuration

ols-router #224

Odd partition signatures

ROUTE PLANNER configuration data functional route planner

ols-router #212

Support one-way Weight Restrictions

Route Planner 2.1

Diving in

API Consoles

<https://data.gov.bc.ca/>

- -> Geographic Services
 - -> **Location Services**
 - BC Route Planner
 - [Launch REST API Console \(API Key Required\)](#)
 - BC Address Geocoder
 - [Launch REST API Console](#)

[Enter API Key](#)[Get API Key](#)[Manage API
Keys](#)[API Key Help](#)

Server

directions



GET /directions.{outputFormat} Get the directions, path, distance and travel time between a series of geographic points



POST /directions.{outputFormat} Get the directions, path, distance and travel time between a series of geographic points



GET /optimalDirections.{outputFormat} Get the directions, optimal path, distance and travel time between a start point and a series of end points which are reordered to minimize total distance or time.



POST /optimalDirections.{outputFormat} Get the directions, optimal path, distance and travel time between a start point and one or more end points which are reordered to minimize total distance or time.



GET /truck/directions.{outputFormat} Get the directions, path, distance and travel time between a series of geographic points for a commercial vehicle



POST /truck/directions.{outputFormat} Get the directions, path, distance and travel time between a series of geographic points



GET /truck/optimalDirections.{outputFormat} Get the directions, optimal path, distance and travel time between a start point and a series of end points which are reordered to minimize total distance or time for a commercial vehicle



POST /truck/optimalDirections.{outputFormat} Get the directions, optimal path, distance and travel time between a start point and one or more end points which are reordered to minimize total distance or time.



distance



GET /distance.{outputFormat} Get distance and travel time between two geographic points



POST /distance.{outputFormat} Get distance and travel time between two geographic points



GET /distance/betweenPairs.{outputFormat} Get distance and travel time between each pair of geographic points



POST /distance/betweenPairs.{outputFormat} Get distance and travel time between each pair of geographic points



[Enter API Key](#)[Get API Key](#)[Manage API Keys](#)[API Key Help](#)

Server

`https://router.api.gov.bc.ca/`



directions



GET `/directions.{outputFormat}` Get the directions, path, distance and travel time between a series of geographic points



Represents the turn-by-turn directions, geometry, distance, and time of the shortest path or fastest path between given start and end points

Parameters

[Cancel](#)

Name	Description
outputFormat * required string (path)	Format of representation <div>json</div>
points * required string (query)	A list of any number of route points in start to end order. See points <div>-123.70794,48.77869,-123.53785,48.38200</div>
outputSRS integer (query)	The EPSG code of the spatial reference system (SRS) to use for output geometries. See outputSRS <div>4326</div>
criteria string (query)	Routing criteria to optimize (e.g., shortest, fastest). Default is shortest. <div>fastest</div>
distanceUnit string (query)	distance unit of measure (e.g., km, mi). Default is km. <div>km</div>
roundTrip boolean (query)	If true, route ends at start point. Default is false. <div>false</div>

Execute

Clear

Responses

Curl

```
curl -X GET "https://router.api.gov.bc.ca/directions.json?points=-123.70794%2C48.77869%2C-123.53785%2C48.38200&outputSRS=4326&criteria=fastest&distanceUnit=km&roundTrip=false&correctSide=true" -H "accept: */*" -H "apikey: "
```

Request URL

```
https://router.api.gov.bc.ca/directions.json?points=-123.70794%2C48.77869%2C-123.53785%2C48.38200&outputSRS=4326&criteria=fastest&distanceUnit=km&roundTrip=false&correctSide=true
```

Server response

Open Request URL

Code

Details

200

Response body

```
{
  "routeDescription": null,
  "searchTimestamp": "2020-04-09 16:33:59",
  "executionTime": 80,
  "version": "2.1.0",
  "disclaimer": "https://www2.gov.bc.ca/gov/content?id=79F93E018712422FBC8E674A67A70535",
  "privacyStatement": "https://www2.gov.bc.ca/gov/content?id=9E890E16955E4FF48F3B0E07B4722932",
  "copyrightNotice": "Copyright 2020 Province of British Columbia - Open Government License",
  "copyrightLicense": "https://www2.gov.bc.ca/gov/content?id=A519A568C2BF44E4A008833FCF527F61",
  "ereCode": 4326,
  "criteria": "fastest",
  "enable": "gdf,ldf,tc,tr,xc",
  "distanceUnit": "km",
  "points": [
    [
      -123.70794,
      48.77869
    ],
    [
      -123.53785,
      48.382
    ]
  ],
  "routeFound": true,
  "distance": 55.544,
  "time": 3143.1414137662987,
  "timeText": "52 minutes 23 seconds",
  "route": [
    [
      -123.70793,
      48.7785
    ],
    [
      -123.70831,
```

Diving in

Developer Guides

<https://data.gov.bc.ca/>

- -> Geographic Services
 - -> **Location Services**
 - BC Route Planner
 - <https://github.com/bcgov/ols-router/blob/gh-pages/router-developer-guide.md>
 - BC Address Geocoder
 - <https://github.com/bcgov/ols-geocoder/blob/gh-pages/geocoder-developer-guide.md>

Tools

- **Chrome apps**
 - ARC (Advanced REST client)
- **Chrome extensions**
 - JSONView
 - ZenHub
- **Chrome developer console**
 - CTRL + Shift + J
- **Fiddler**



BC Route Planner

Making a Request

outputFormat

- The file format for the response (*required*)

Formats
json
kml
html

<https://router.api.gov.bc.ca/directions.json>

points

/directions

- The points parameter (*required*) is a list of route points in order of start to finish.
- Listed as X1,Y1,...Xn,Yn in the projection specified by the 'outputSRS' parameter.

[https://router.api.gov.bc.ca/directions.json?
points=-123.1124558,49.2751466,-
123.1168642,49.288516](https://router.api.gov.bc.ca/directions.json?points=-123.1124558,49.2751466,-123.1168642,49.288516)

outputSRS

- The EPSG code of the spatial reference system

Code	
4326	WGS84
3005	BC Albers
26907, 26908, 26909, 26910, 26911	NAD83/UTM Zones 7N through 11N

[https://router.api.gov.bc.ca/directions.json?](https://router.api.gov.bc.ca/directions.json?points=-123.1124558,49.2751466,-123.1168642,49.288516&outputSRS=4326)
points=-123.1124558,49.2751466,-
123.1168642,49.288516
&outputSRS=4326

distanceUnit

/directions

- The distance unit of measure

units	
km	Kilometres (default)
mi	Miles

<https://router.api.gov.bc.ca/directions.json?points=-123.1124558,49.2751466,-123.1168642,49.288516&outputSRS=4326&distanceUnit=km>

 default is -> 'km'

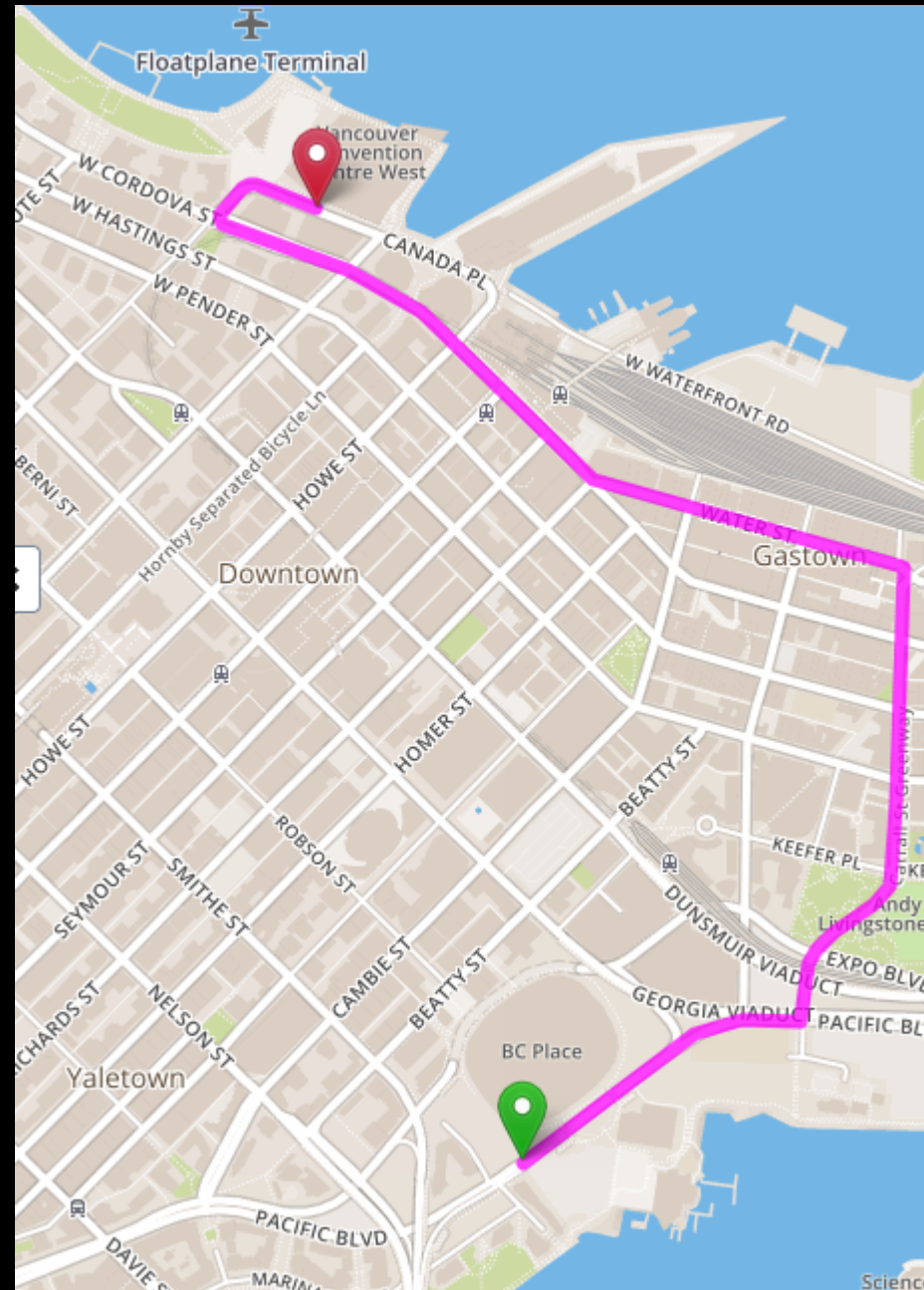
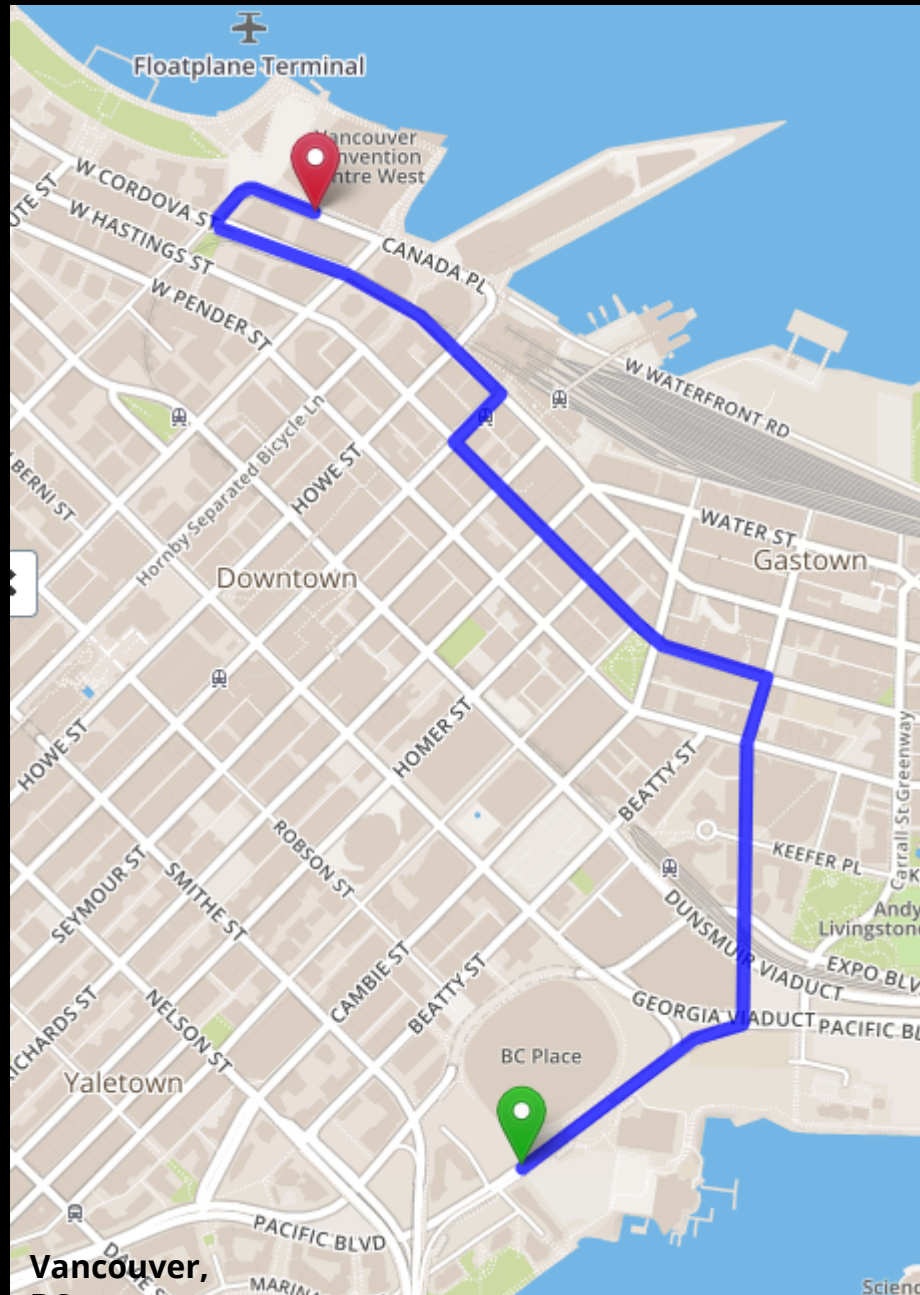
camelCase

/directions

- <https://router.api.gov.bc.ca/directions.json?points=-123.33801,49.37924,-123.14850,49.33004&distanceunit=mi>
- Returns kilometers (default)
- <https://router.api.gov.bc.ca/directions.json?points=-123.33801,49.37924,-123.14850,49.33004&distanceUnit=mi>
- Returns miles

Shortest Route vs. Fastest Route

/directions



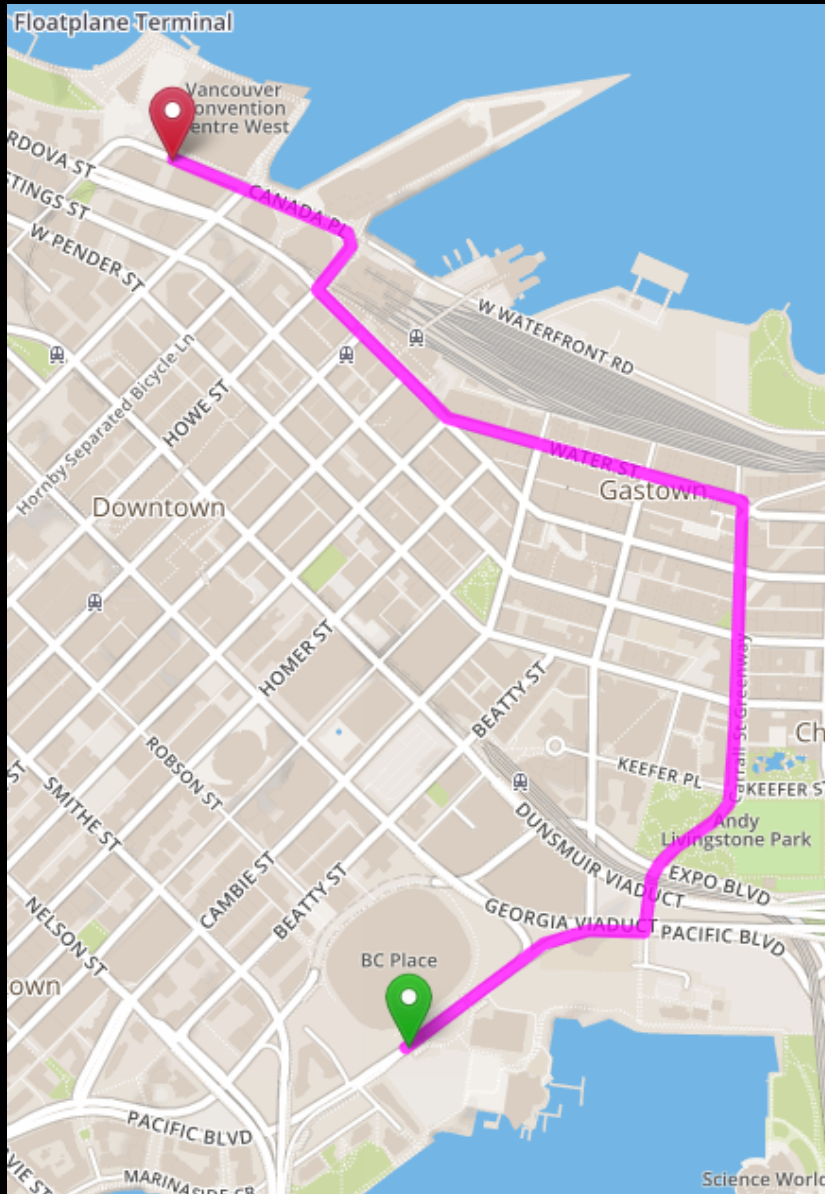
`https://router.api.gov.bc.ca/directions.json?points=-
123.1124558,49.2751466,-
123.1168642,49.288516&outputSRS=4326&distanceU
nit=km&criteria=shortest`

 default is -> 'fastest'

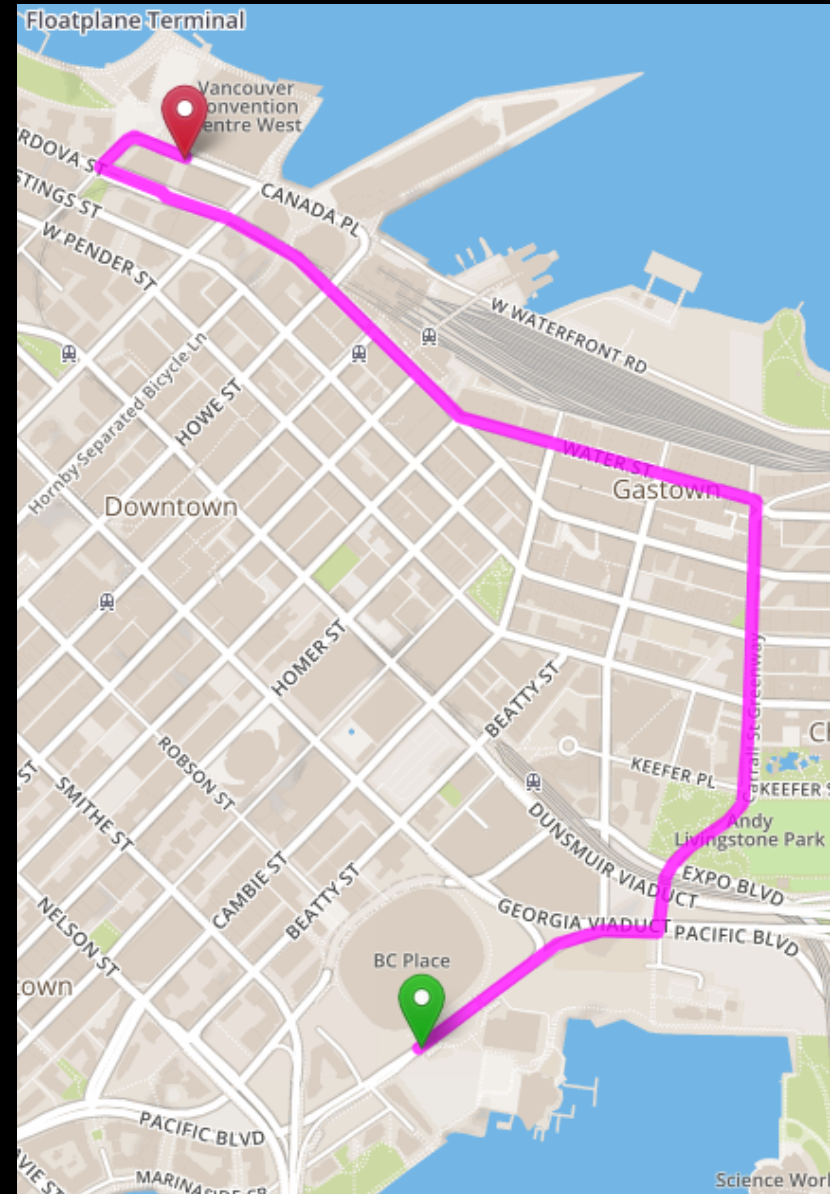
correctSide

/directions

=false



=true



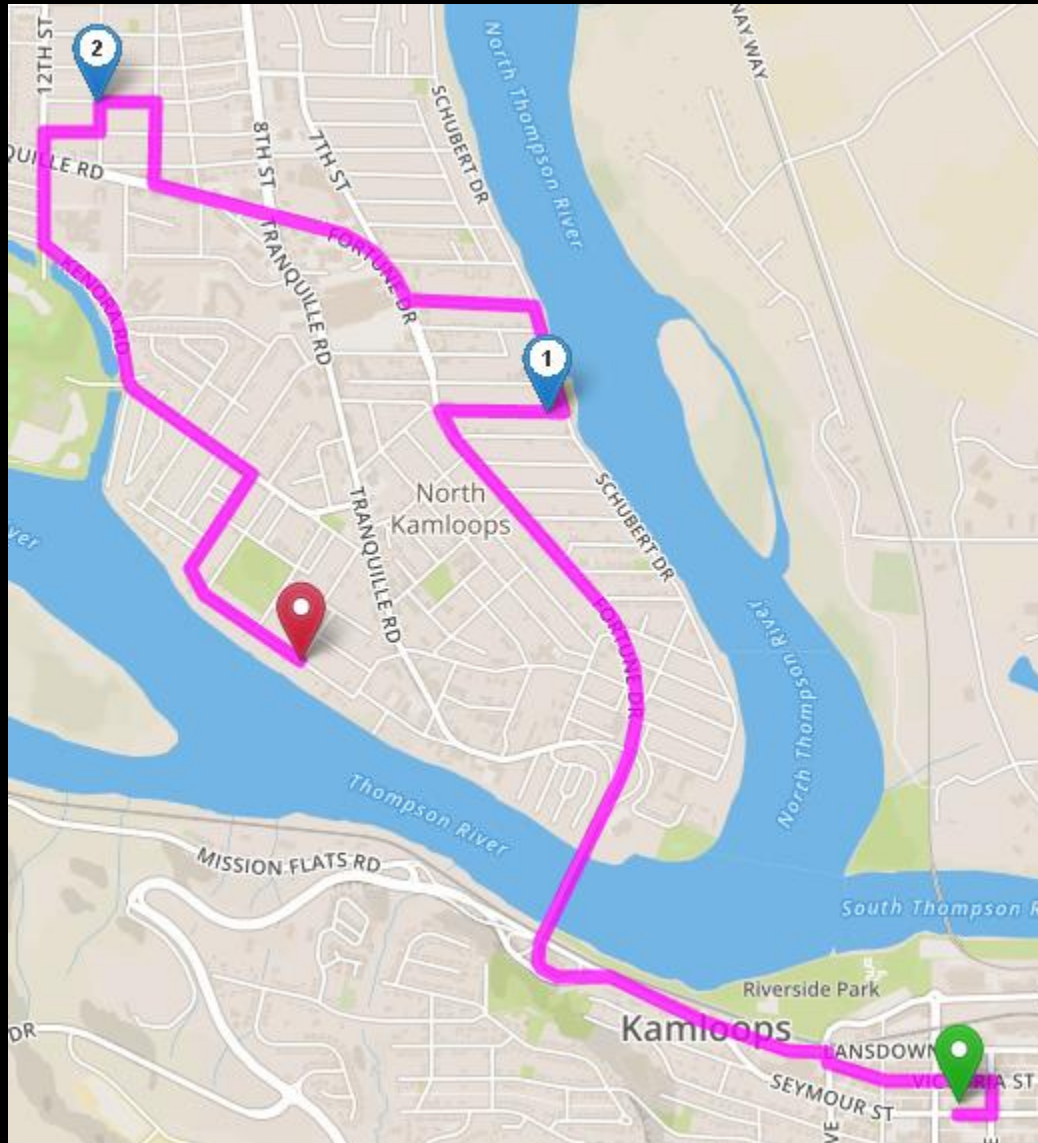
<https://router.api.gov.bc.ca/directions.json?points=-123.1124558,49.2751466,-123.1168642,49.288516&outputSRS=4326&distanceUnit=km&correctSide=true>

 default is -> 'false'

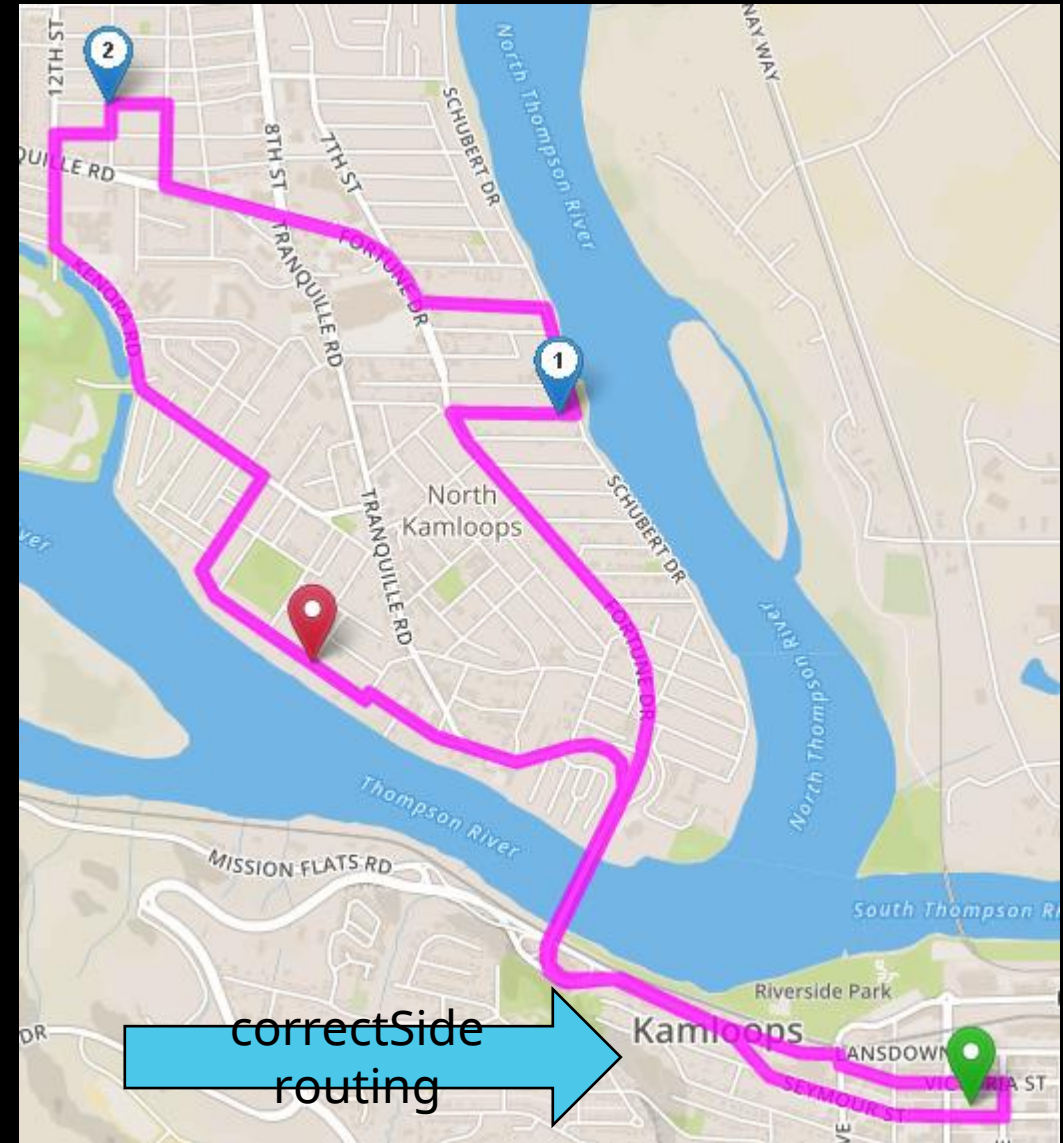
roundTrip

/directions

=false



=true



correctSide
routing

`https://router.api.gov.bc.ca/directions.json?points=-
123.1124558,49.2751466,-
123.1168642,49.288516&outputSRS=4326&distanceU
nit=km
&correctSide=true
&roundTrip=true`

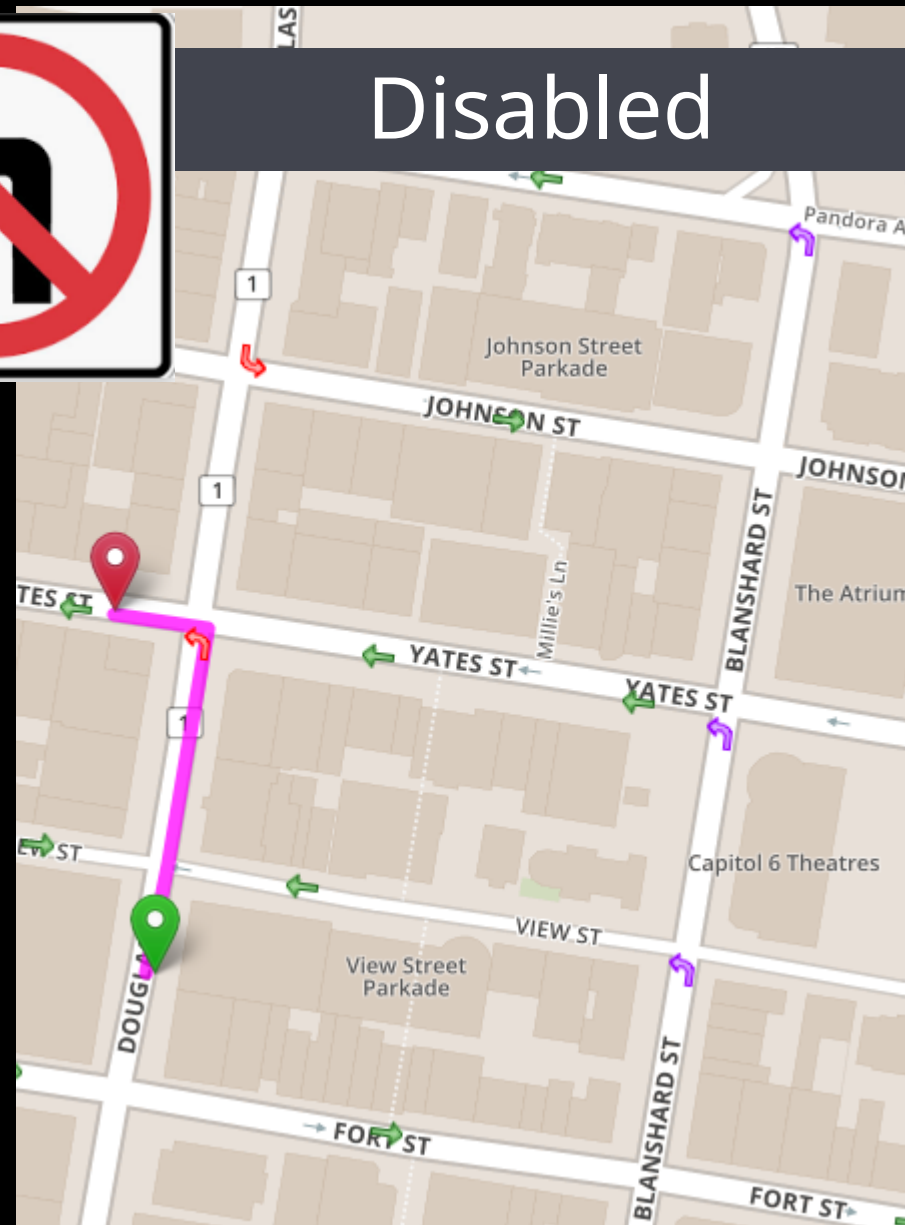
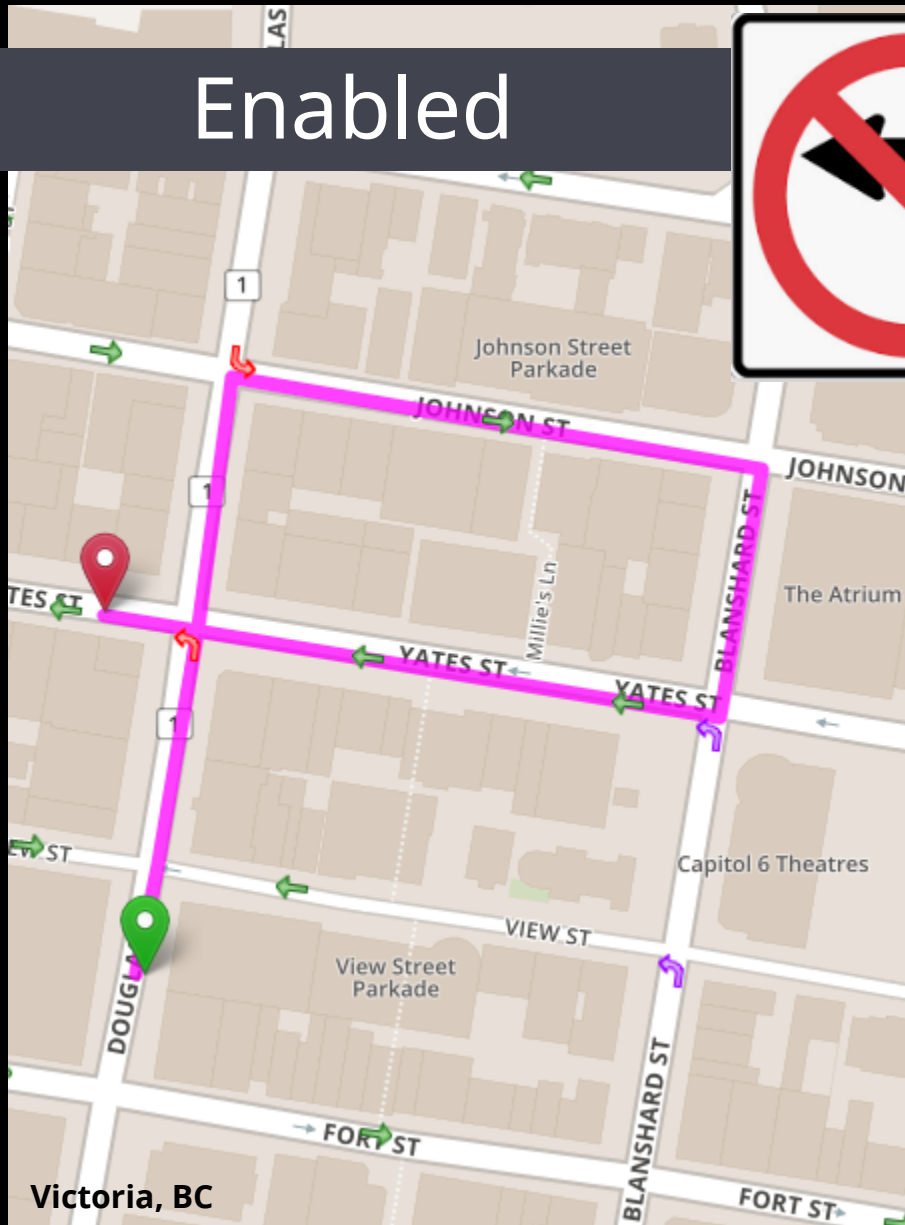
 default is -> 'false'

Turn Restrictions

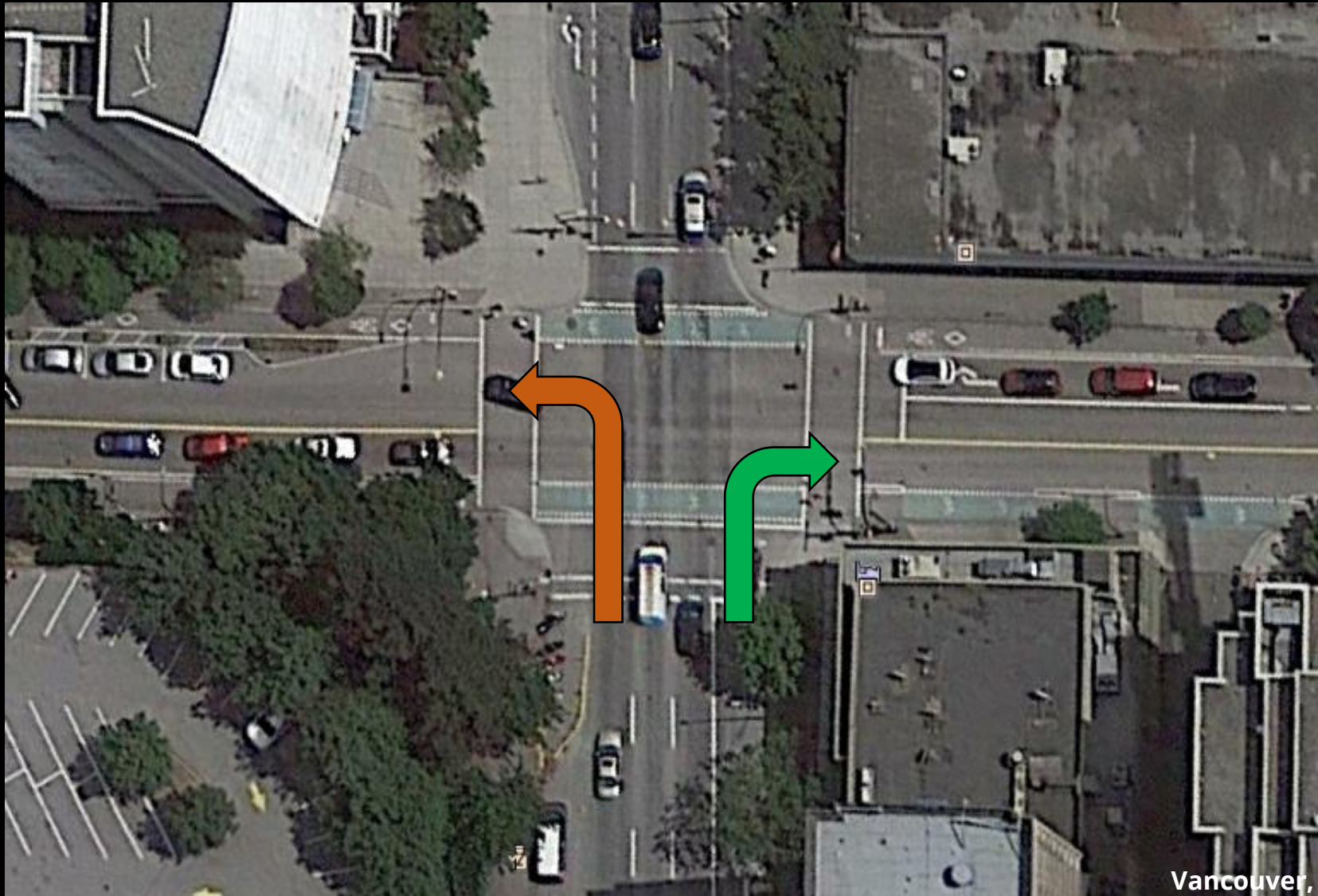
Enabled



Disabled



Turn Costs



Vancouver,
BC

Crossing Costs

Yield or Roundabout vs. Sign

vs.

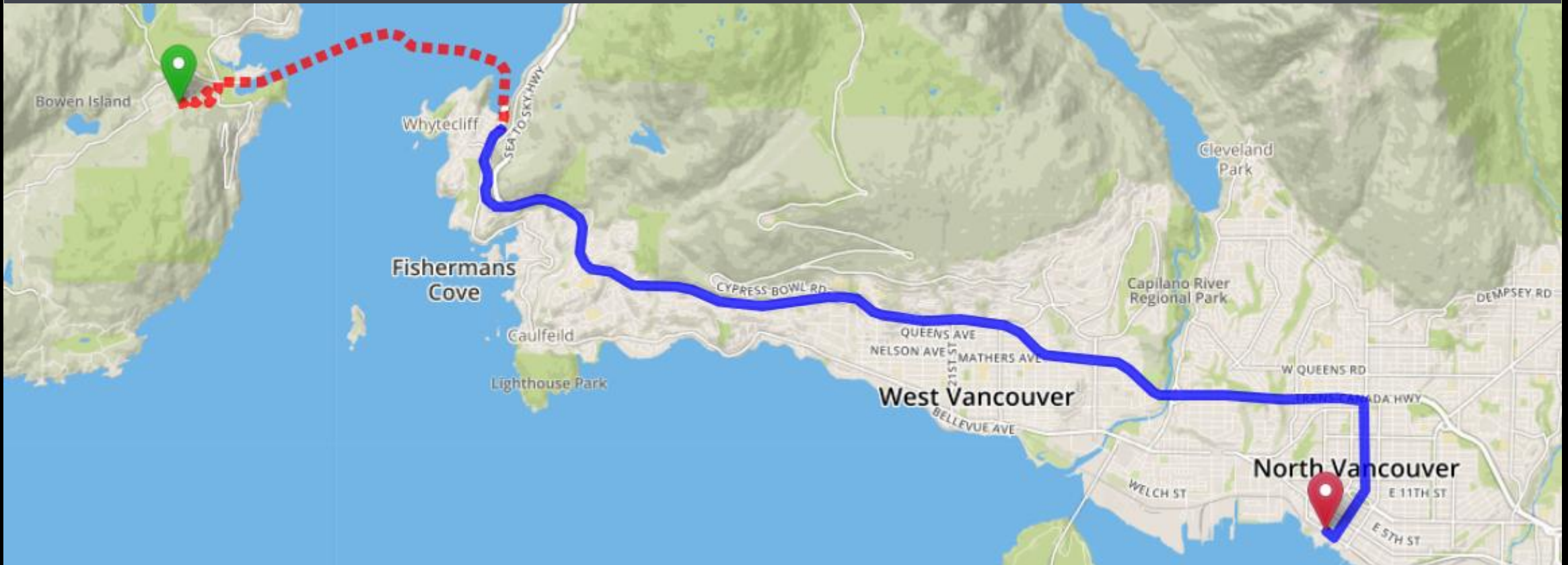


habled by default

Time dependency & Ferry Schedules

BC Route Planner

Depart at 10:37am



Enabled

Route travels 27.636 km in 2 hours 2 minutes
1 hr 18min until next sailing

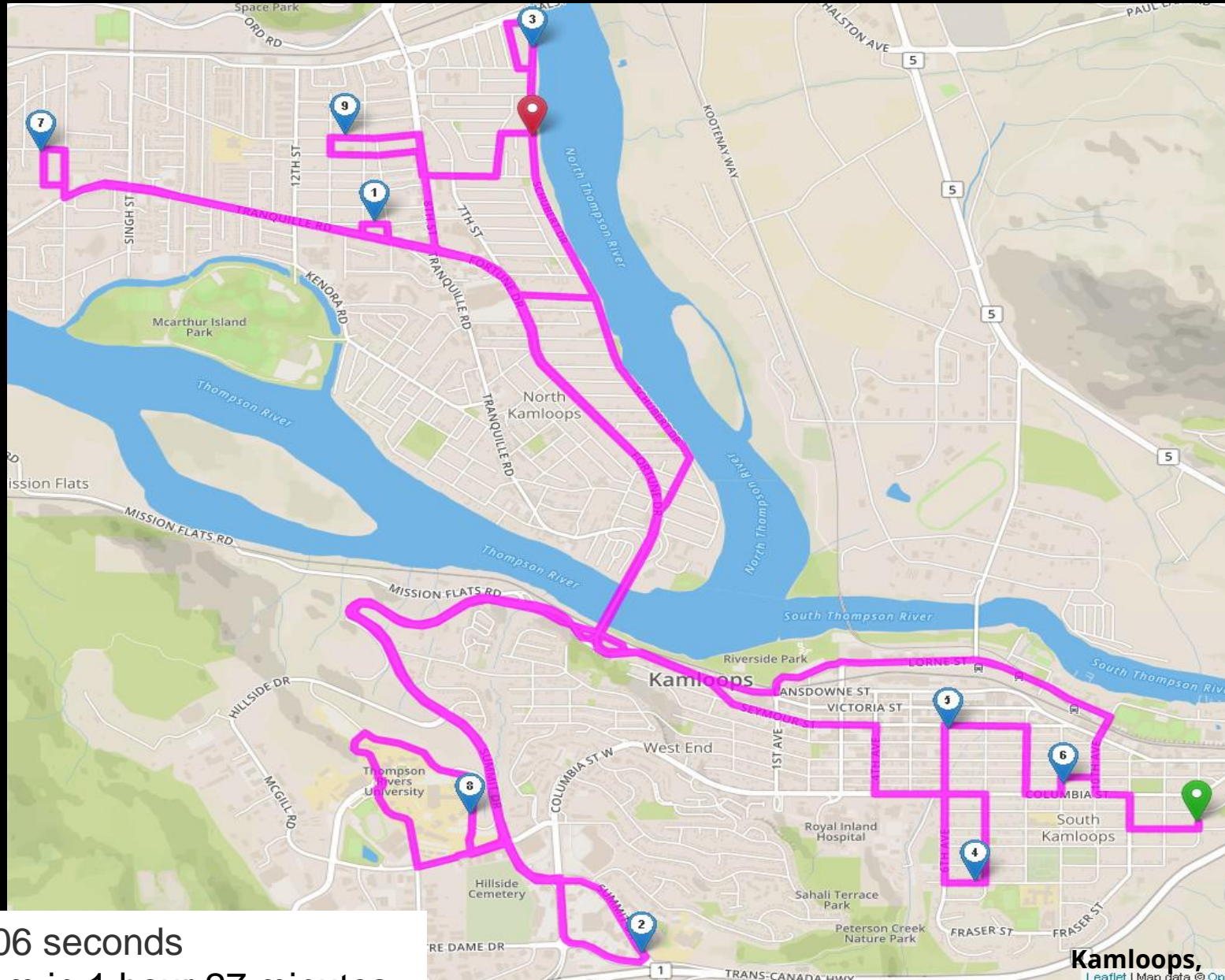
Disabled (default)

Route travels 27.636 km in 54 minutes 51
seconds
Defaults to a 10 minute wait

[https://router.api.gov.bc.ca/directions.json?points=-123.3470,49.3763,-123.0814,49.3118
&enable=td,sc
&departure=2020-05-15T10:37:00-07:00](https://router.api.gov.bc.ca/directions.json?points=-123.3470,49.3763,-123.0814,49.3118&enable=td,sc&departure=2020-05-15T10:37:00-07:00)

Adding many points (waypoints)

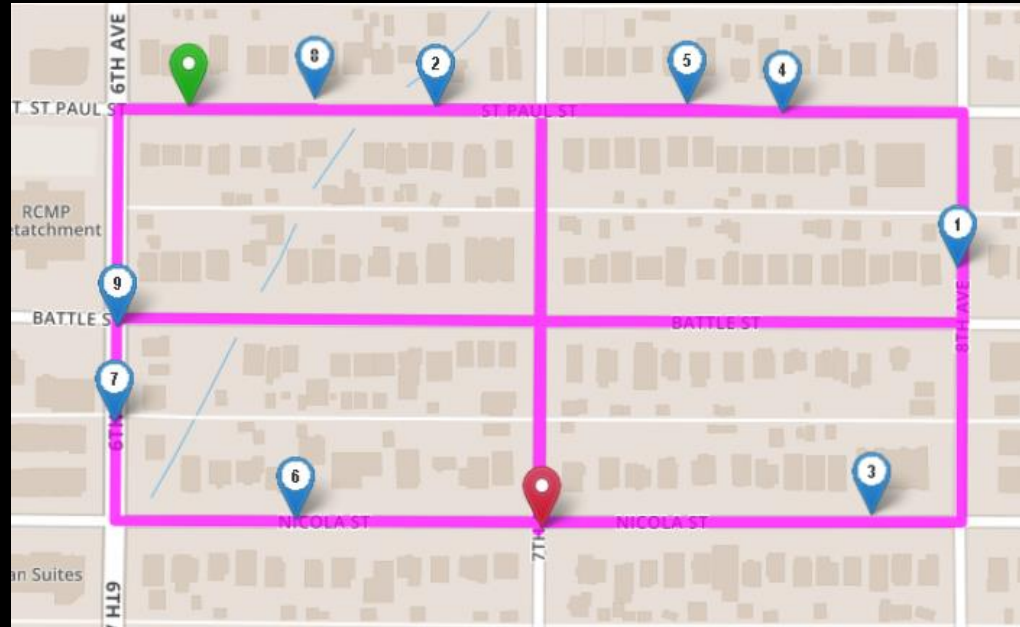
/directions



Route calculated in 0.06 seconds
Route travels 59.994 km in 1 hour 27 minutes

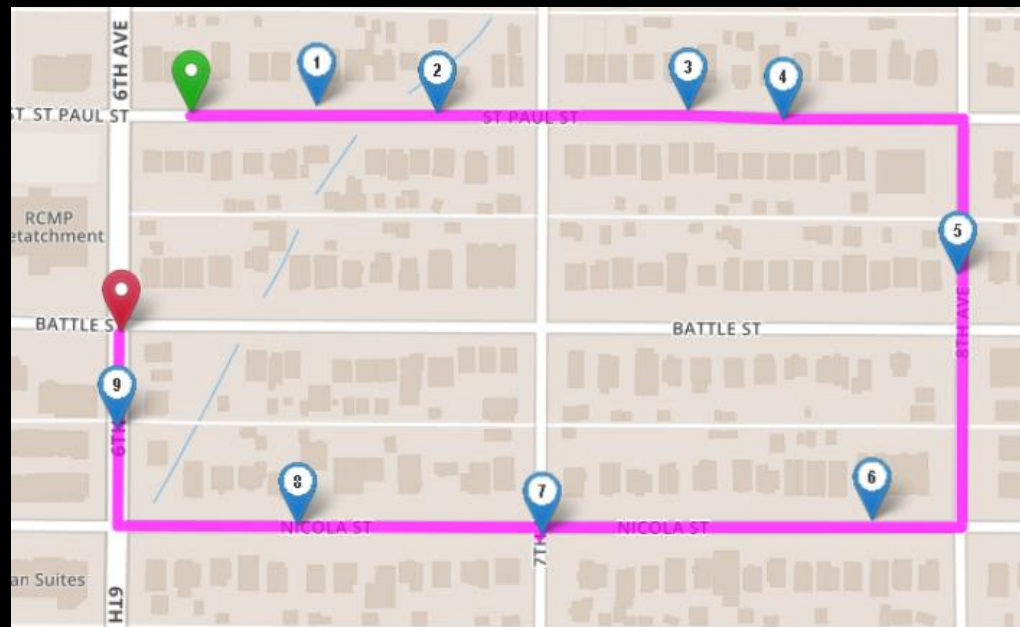
optimalDirections

/optimalDirections



Route #1:
2.85 km in 5:26 min

/directions



Route #2:
1.06 km in 2:09 min

/optimalDirections

optimalDirections

/optimalDirections

Request:

- <https://router.api.gov.bc.ca/optimalDirections.json?points=<LIST OF POINTS>>

Response:

- Now includes 'visitOrder'

```
"points": [
  [-123.36517, 48.42545],
  [-123.35587, 48.42445],
  [-123.36057, 48.42323],
  [-123.36002, 48.42915],
  [-123.36479, 48.42455]
],
"routeFound": true,
"distance": 1.916,
"time": 157,
"timeText": "2 minutes 37 seconds",
"visitOrder": [0, 3, 2, 4, 1],
"route": [
  [-123.36517, 48.42545],
  [-123.36508, 48.42544],
  [-123.36533, 48.42465],
  [-123.36478, 48.42459],
  [-123.36478, 48.42459],
  [-123.36249, 48.42432],
  [-123.36269, 48.42352],
  [-123.36056, 48.42327],
```

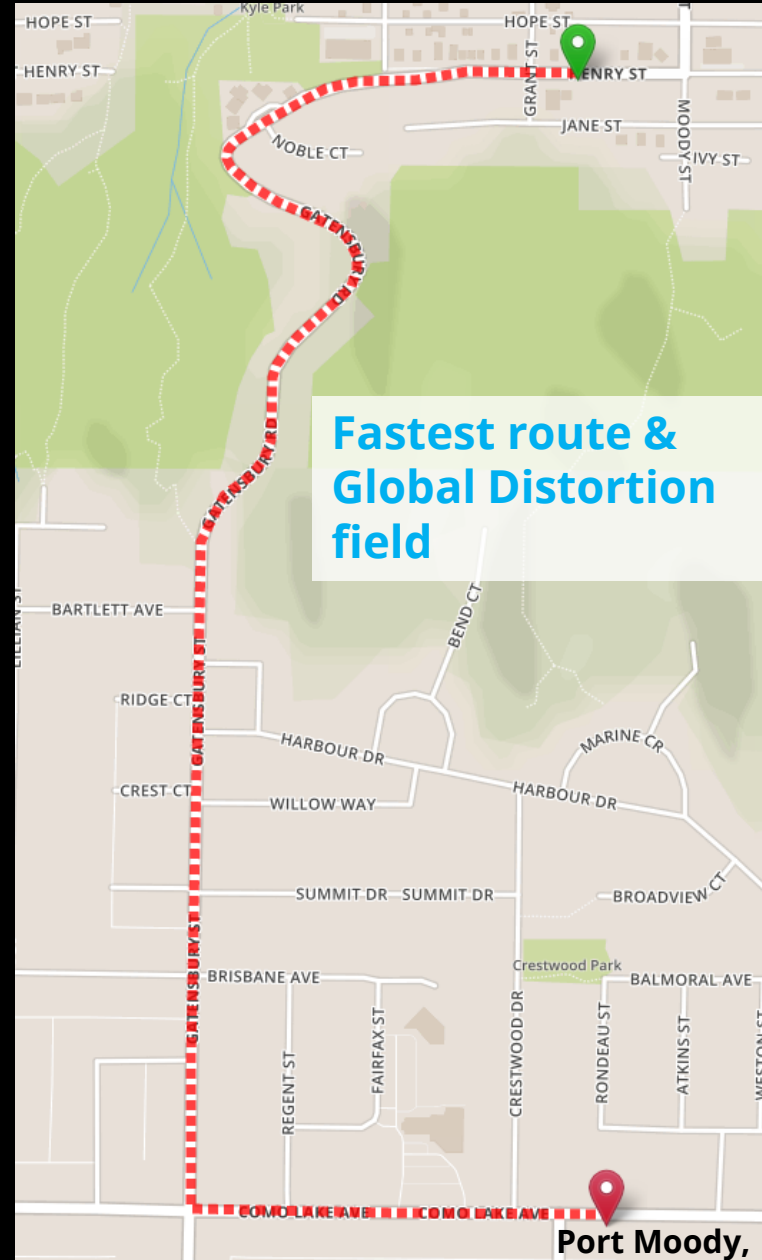
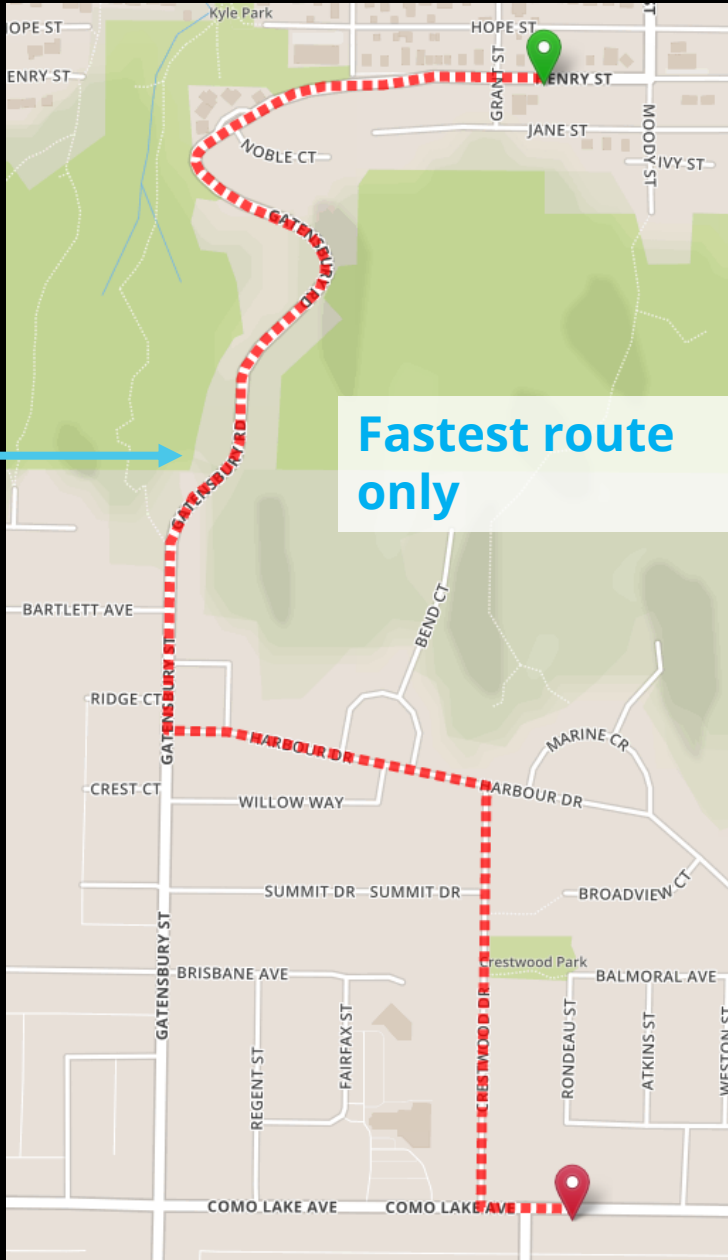
Distortion Fields

- **Global Distortion Field**
 - Encourage vehicles to use more major roads
- **Local Distortion Field**
 - Special cases

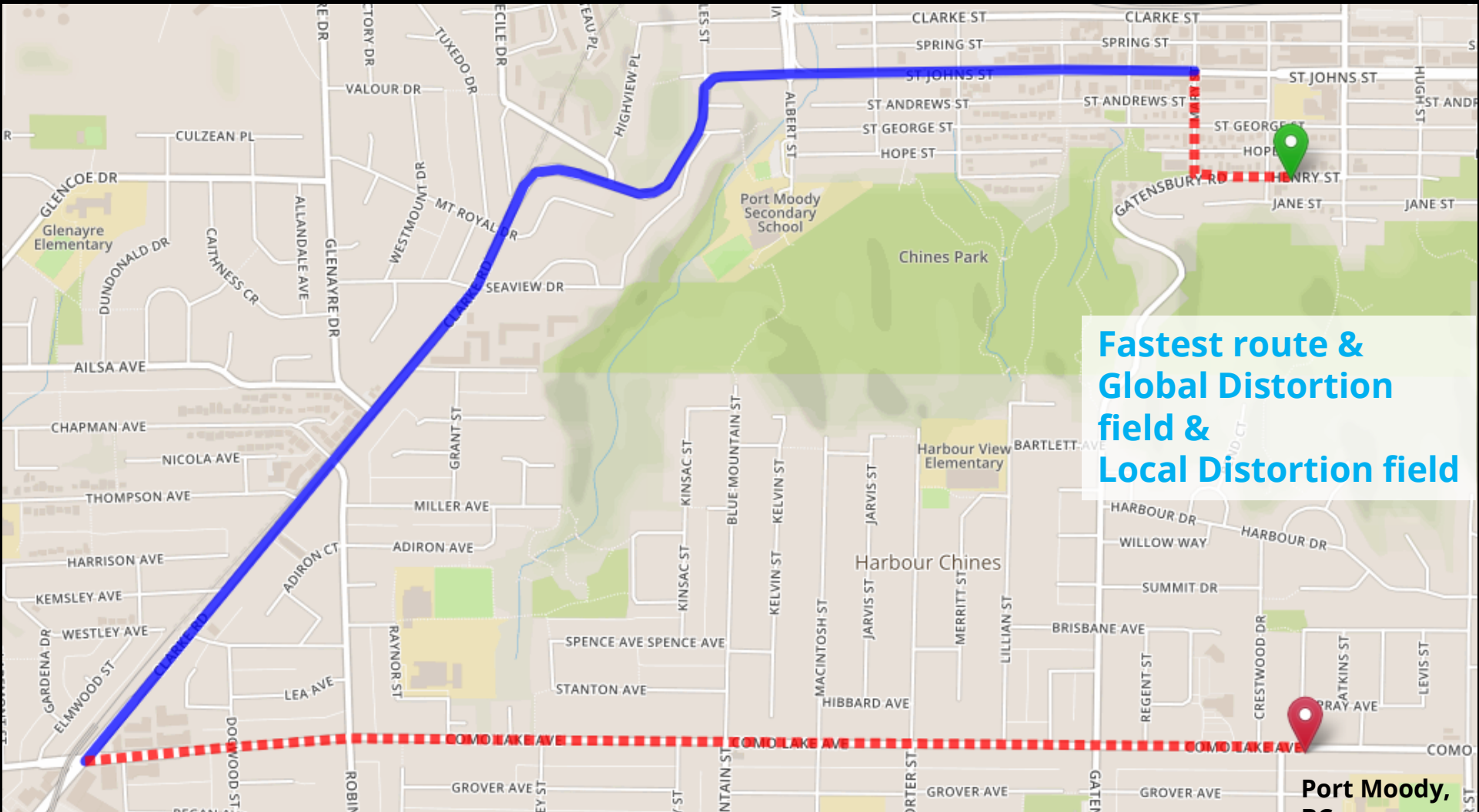
nabled by default

Global Distortion Field

Municipality:
Discourage
travel on
Gatensbury Rd



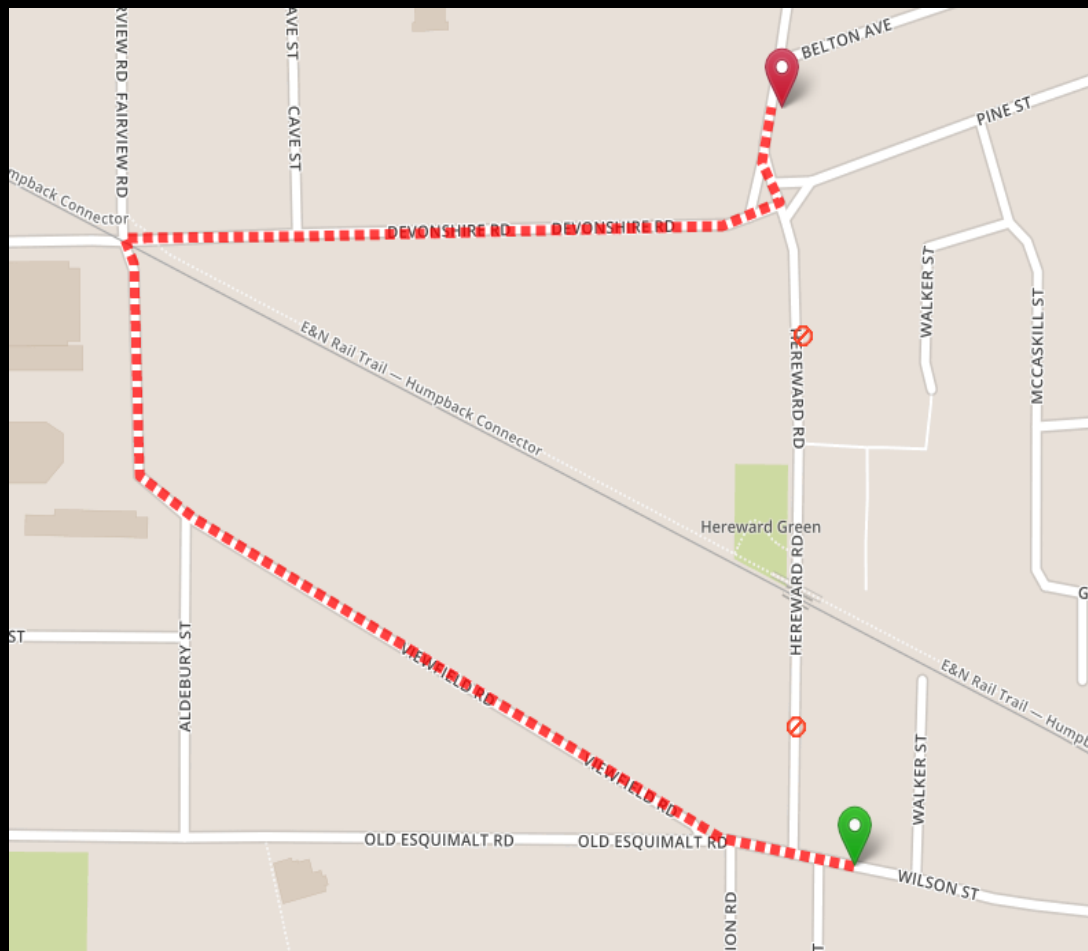
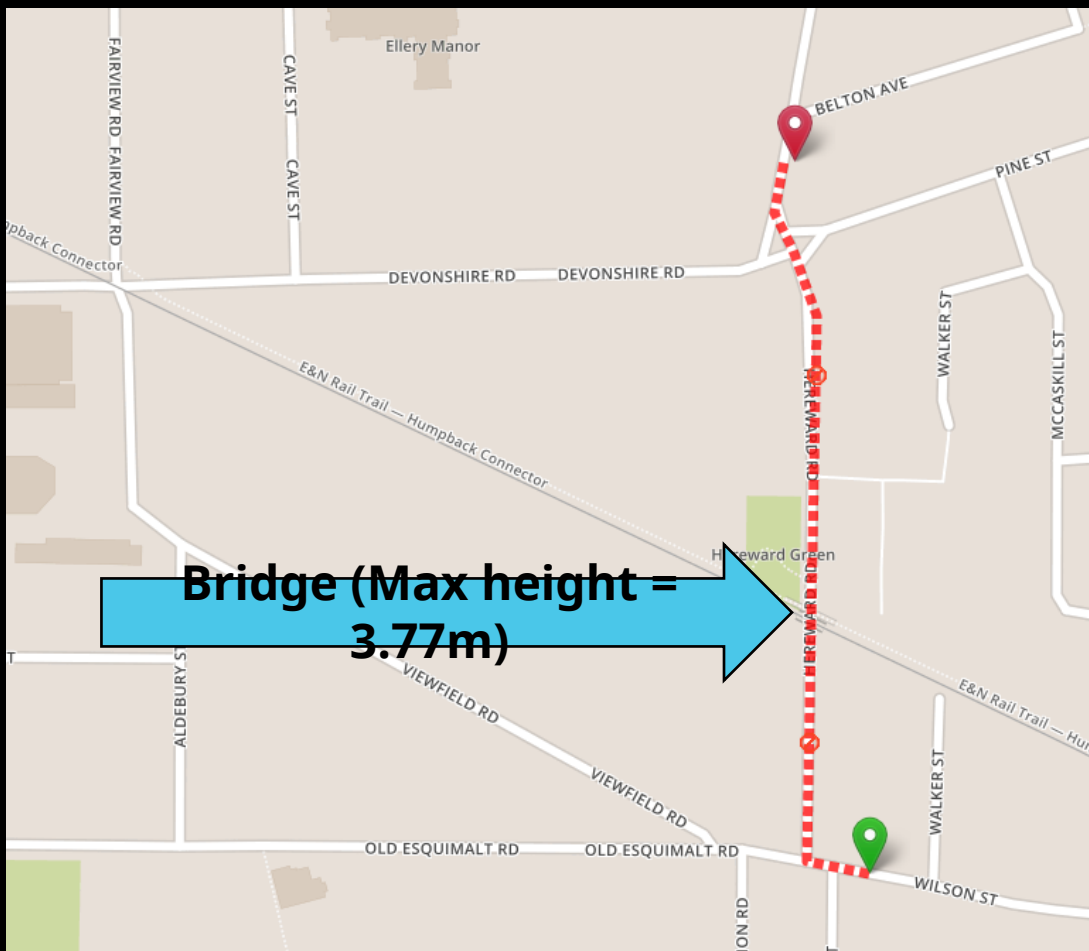
Local Distortion Field



[https://router.api.gov.bc.ca/truck/directions.json?points=-
122.8544,49.2746,-
122.8512,49.2633&outputSRS=4326&distanceUnit=km
&correctSide=true](https://router.api.gov.bc.ca/truck/directions.json?points=-122.8544,49.2746,-122.8512,49.2633&outputSRS=4326&distanceUnit=km&correctSide=true)

Truck Directions

Height (m)



Truck Directions

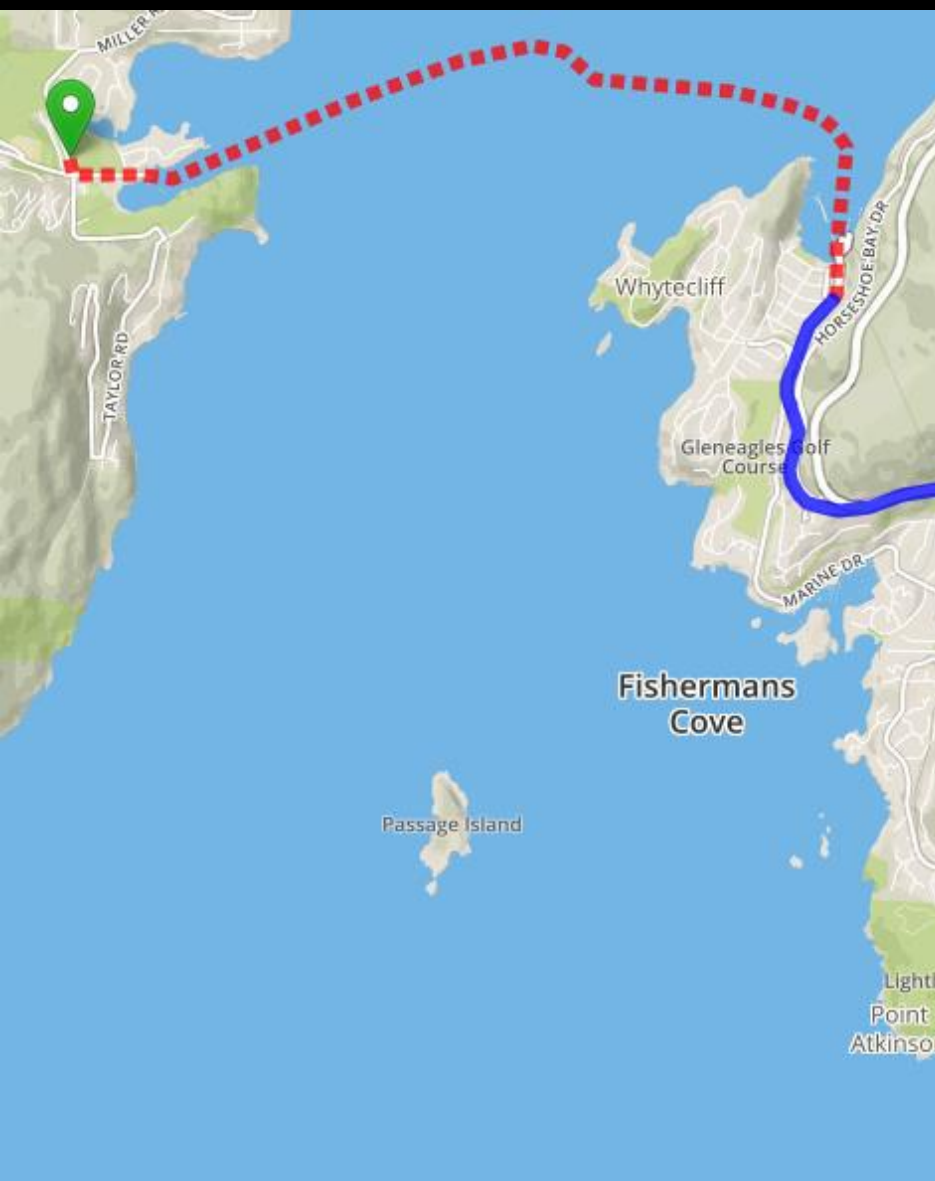
/truck/directions

[https://router.api.gov.bc.ca/truck/directions.json?](https://router.api.gov.bc.ca/truck/directions.json?points=<LIST OF POINTS>...&height=3.8)
points=<LIST OF POINTS>...&height=3.8

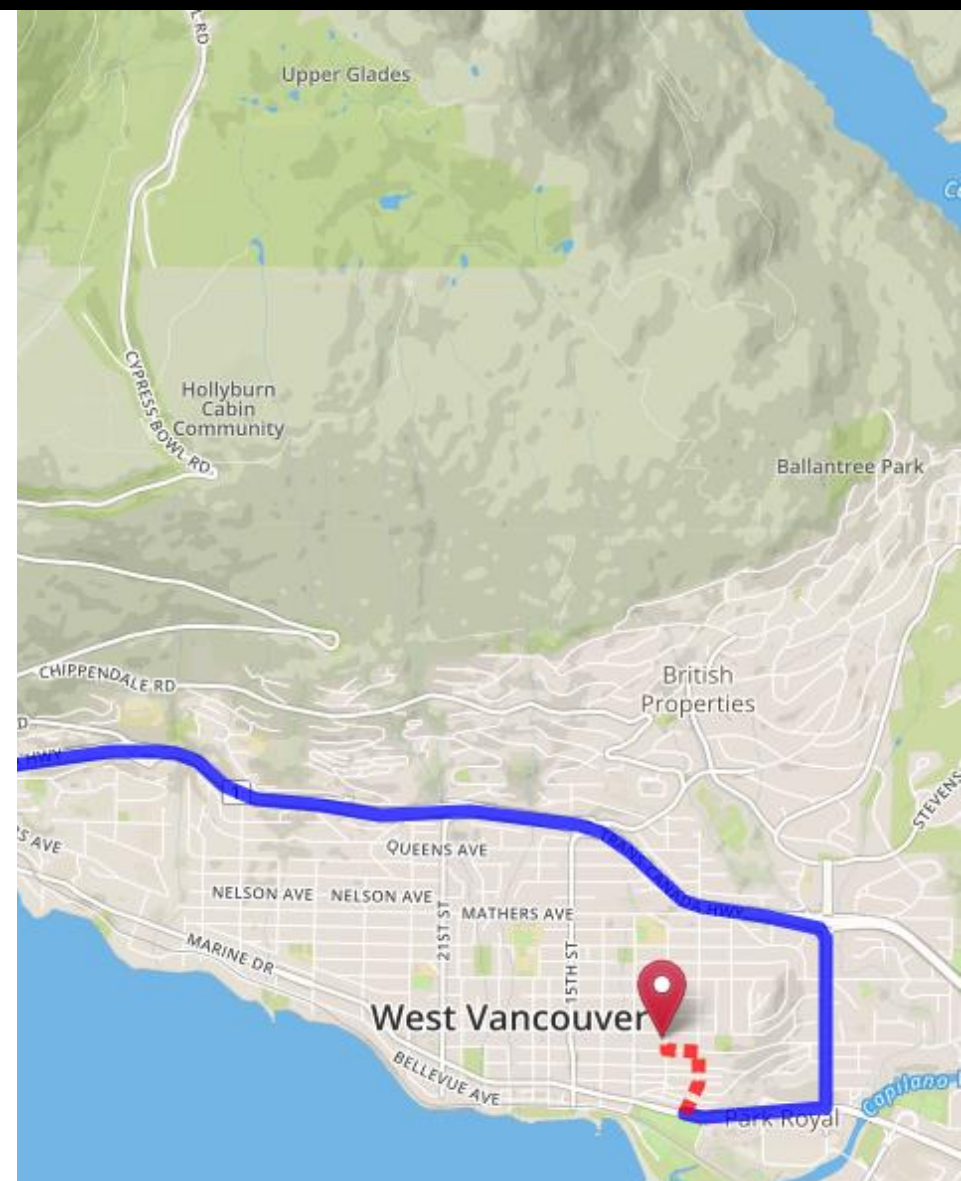
You can also include – Length (m), Width (m), Weight (kg)

[https://router.api.gov.bc.ca/truck/directions.json?](https://router.api.gov.bc.ca/truck/directions.json?points=<LIST OF POINTS>...&height=3.8&width=5&length=30&weight=12000)
points=<LIST OF POINTS>...
&height=3.8&width=5&length=30&weight=12000

Truck Route Partitioning



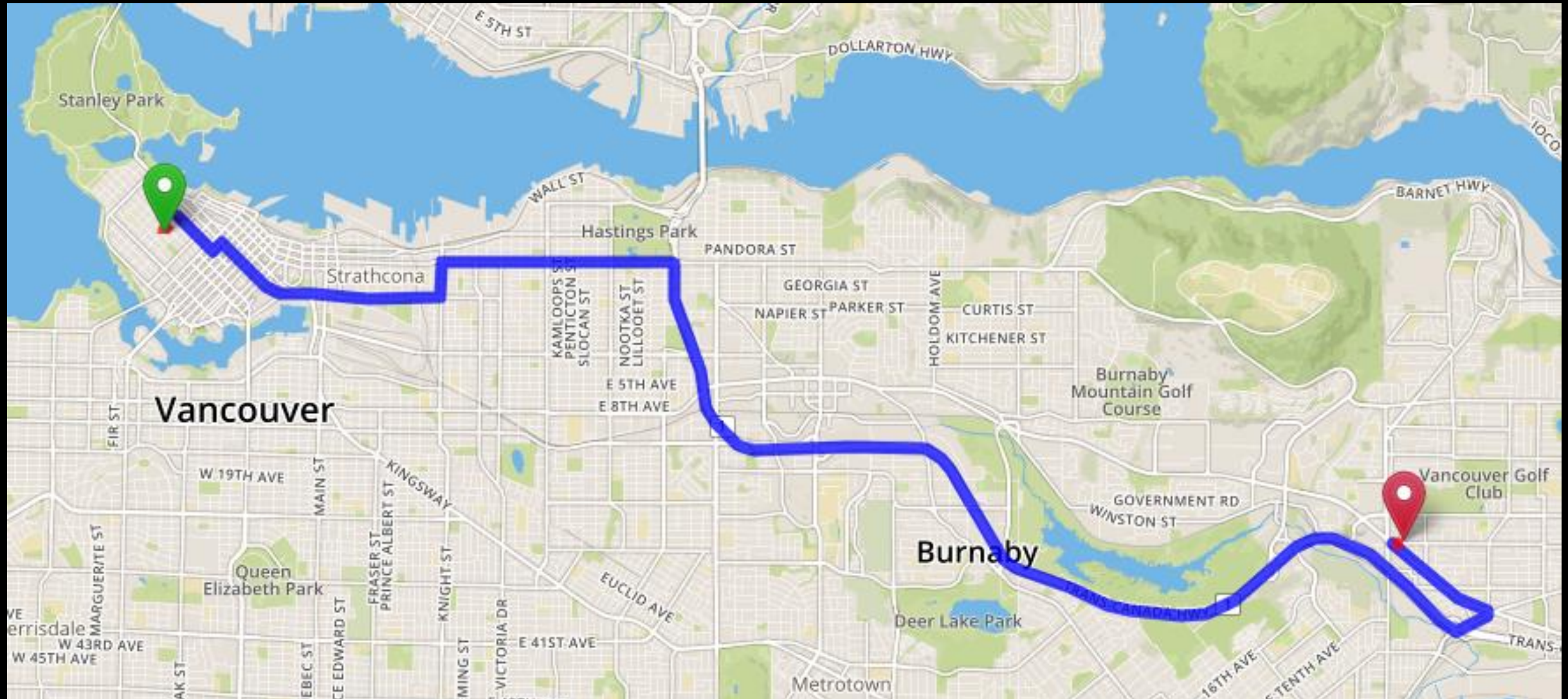
```
partition: "isFerry,isTruckRoute,locality",
partitions: [
  - {
    index: 0,
    isFerry: false,
    isTruckRoute: false,
    locality: "Bowen Island"
  },
  - {
    index: 5,
    isFerry: true,
    isTruckRoute: false,
    locality: "Ferry"
  },
  - {
    index: 22,
    isFerry: false,
    isTruckRoute: false,
    locality: "West Vancouver"
  },
  - {
    index: 24,
    isFerry: false,
    isTruckRoute: true,
    locality: "West Vancouver"
  },
  - {
    index: 195,
    isFerry: false,
    isTruckRoute: false,
    locality: "West Vancouver"
  }
],
```



Truck Route Partitioning

[https://router.api.gov.bc.ca/truck/directions.json?](https://router.api.gov.bc.ca/truck/directions.json?points=<LIST OF POINTS>...&partition=isTruckRoute,isFerry,locality)
points=<LIST OF POINTS>...
[&partition=isTruckRoute,isFerry,locality](#)

Truck Route Notifications



Truck Route Notifications

```
- {
  type: "TURN_RIGHT",
  name: "Robson St",
  distance: 0.691,
  time: 83,
  text: "Turn right onto Robson St for 700 m (1 minute 23 seconds)",
  point: [
    -123.12854,
    49.287
  ],
  notifications: [
    - {
      type: "TruckRestriction",
      message: "Vehicles over 15.25 meters in length may only use this road between 7:00 am and 6:00 pm, Monday to Sunday"
    }
  ]
},
- {
  type: "TURN_LEFT",
  name: "Hornby St",
  distance: 0.173,
  time: 29,
  text: "Turn left onto Hornby St for 150 m (29 seconds)",
  point: [
    -123.12176,
    49.28264
  ],
  notifications: [
    - {
      type: "TruckRestriction",
      message: "Vehicles over 15.25 meters in length may only use this road between 7:00 am and 6:00 pm, Monday to Sunday"
    }
  ]
},
```

Truck Route Notifications

- There is no 'notification' request parameter
- Provided automatically (where applicable) by requesting a truck route using [/truck/directions](#) or [/truck/optimalDirections](#)

<https://router.api.gov.bc.ca/truck/directions.json>

<https://router.api.gov.bc.ca/truck/optimalDirections.json>



BC Route Planner

Understanding the Response

HTTP Response

/directions

- Different for requests to /distance vs. /directions vs. /route
- Full list provided in the developer guide
 - <https://bcgov.github.io/ols-router/router-developer-guide.html>

/distance

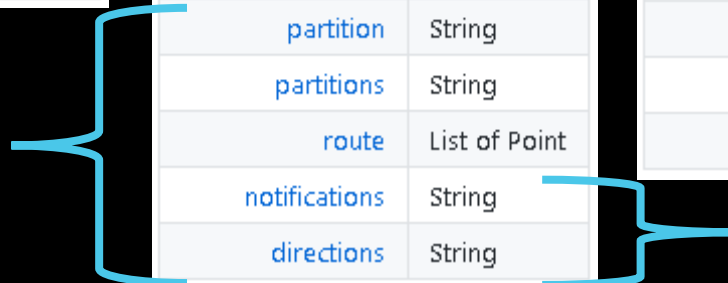
Attribute Name	Type
routeDescription	String
searchTimestamp	Datetime
executionTime	Real
version	String
disclaimer	String
privacyStatement	String
copyrightNotice	String
copyrightLicense	String
srsCode	Integer
criteria	String
enable	String
distanceUnit	String
points	list of Point
routeFound	Boolean
distance	String
time	Integer
timeText	String

/directions

Attribute Name	Type
routeDescription	String
searchTimestamp	Datetime
executionTime	Real
version	String
disclaimer	String
privacyStatement	String
copyrightNotice	String
copyrightLicense	String
srsCode	Integer
criteria	String
enable	String
distanceUnit	String
points	List of Point
routeFound	Boolean
distance	String
time	Integer
timeText	String
partition	String
partitions	String
route	List of Point
notifications	String
directions	String

/route

Attribute Name	Type
routeDescription	String
searchTimestamp	Datetime
executionTime	Real
version	String
disclaimer	String
privacyStatement	String
copyrightNotice	String
copyrightLicense	String
srsCode	Integer
criteria	String
enable	String
distanceUnit	String
points	list of Point
routeFound	Boolean
distance	String
time	Integer
timeText	String
partition	String
partitions	String
route	List of Point



/distance response

/distance

Slide 1 of 1

```
{
  "routeDescription": null,
  "searchTimestamp": "2020-04-17 21:13:20",
  "executionTime": 48,
  "version": "2.1.0",
  "disclaimer": "https://www2.gov.bc.ca/gov/content?id=79F93E018712422FBC8E674A67A70535",
  "privacyStatement": "https://www2.gov.bc.ca/gov/content?id=9E890E16955E4FF4BF3B0E07B4722932",
  "copyrightNotice": "Copyright 2020 Province of British Columbia - Open Government License",
  "copyrightLicense": "https://www2.gov.bc.ca/gov/content?id=A519A56BC2BF44E4A008B33FCF527F61",
  "srsCode": 4326,
  "criteria": "fastest",
  "enable": "gdf,ldf,tc,tr,xc",
  "distanceUnit": "km",
  "points": [
    [
      -123.70794,
      48.77869
    ],
    [
      -123.53785,
      48.382
    ]
  ],
  "routeFound": true,
  "distance": 55.296,
  "time": 3110.129311972462,
  "timeText": "51 minutes 50 seconds"
}
```


/directions response

/directions

slide 1 of 3

```
{
  "routeDescription": null,
  "searchTimestamp": "2020-04-17 20:53:51",
  "executionTime": 49,
  "version": "2.1.0",
  "disclaimer": "https://www2.gov.bc.ca/gov/content?id=79F93E018712422FBC8E674A67A70535",
  "privacyStatement": "https://www2.gov.bc.ca/gov/content?id=9E890E16955E4FF4BF3B0E07B4722932",
  "copyrightNotice": "Copyright 2020 Province of British Columbia - Open Government License",
  "copyrightLicense": "https://www2.gov.bc.ca/gov/content?id=A519A56BC2BF44E4A008B33FCF527F61",
  "srsCode": 4326,
  "criteria": "fastest",
  "enable": "gdf,ldf,tc,tr,xc",
  "distanceUnit": "km",
  "points": [
    [
      -123.70794,
      48.77869
    ],
    [
      -123.53785,
      48.382
    ]
  ],
}
```

/directions response

/directions

slide 2 of 3

```
"routeFound": true,  
"distance": 55.296,  
"time": 3110.129311972462,  
"timeText": "51 minutes 50 seconds",  
"route": [  
  [  
    -123.70793,  
    48.7785  
  ],  
  [  
    -123.70719,  
    48.77851  
  ],  
  [  
    -123.7069,  
    48.77769  
  ],  
  [  
    -123.7066,  
    48.77685  
  ],  
  [  
    -123.70657,
```

/directions response

slide 3 of 3

/directions

```
"directions": [  
  {  
    "type": "START",  
    "name": "Kenneth St",  
    "distance": 0.055,  
    "time": 17,  
    "heading": "EAST",  
    "text": "Head east on Kenneth St for 55 m (17 seconds)",  
    "point": [  
      -123.70793,  
      48.7785  
    ],  
  },  
  {  
    "type": "TURN_RIGHT",  
    "name": "Canada Ave",  
    "distance": 0.189,  
    "time": 25,  
    "text": "Turn right onto Canada Ave for 200 m (25 seconds)",  
    "point": [  
      -123.70719,  
      48.77851  
    ],  
  }  
]
```

```
"route": [  
  [  
    -123.70793,  
    48.7785  
  ],  
]
```

/route response

/route

slide 1 of 2

```
{
  "routeDescription": null,
  "searchTimestamp": "2020-04-17 20:53:51",
  "executionTime": 49,
  "version": "2.1.0",
  "disclaimer": "https://www2.gov.bc.ca/gov/content?id=79F93E018712422FBC8E674A67A70535",
  "privacyStatement": "https://www2.gov.bc.ca/gov/content?id=9E890E16955E4FF4BF3B0E07B4722932",
  "copyrightNotice": "Copyright 2020 Province of British Columbia - Open Government License",
  "copyrightLicense": "https://www2.gov.bc.ca/gov/content?id=A519A56BC2BF44E4A008B33FCF527F61",
  "srsCode": 4326,
  "criteria": "fastest",
  "enable": "gdf,ldf,tc,tr,xc",
  "distanceUnit": "km",
  "points": [
    [
      -123.70794,
      48.77869
    ],
    [
      -123.53785,
      48.382
    ]
  ],
}
```

/route response

/route

slide 2 of 2

```
"routeFound": true,  
"distance": 55.296,  
"time": 3110.129311972462,  
"timeText": "51 minutes 50 seconds",  
"route": [  
  [  
    -123.70793,  
    48.7785  
  ],  
  [  
    -123.70719,  
    48.77851  
  ],  
  [  
    -123.7069,  
    48.77769  
  ],  
  [  
    -123.7066,  
    48.77685  
  ],  
  [  
    -123.70657,
```

The background image is a composite. The top half features a network graph with white lines connecting circular nodes over a landscape with trees and a sunset sky. The bottom half shows a multi-lane highway with several cars, overlaid with a similar network graph structure. A solid blue horizontal band is positioned between the two image sections, containing the title and subtitle text.

BC Route Planner

Practical examples and Scripting

betweenPairs

/distance/betweenPairs

- A sample betweenPairs script
 - <https://github.com/bcgov/ols-devkit/tree/gh-pages/bps>

- Input csv file

fromPoints	Latitude1	Longitude1	toPoints	Latitude2	Longitude2
CAMPBELL RIVER LAW COURTS	49.82175	-123.21125	GANGES	48.859991	-123.509222
COURTENAY LAW COURTS	49.6895	-124.0995	GOLD RIVER	49.781045	-126.04761
DUNCAN LAW COURTS	48.7779	-123.7112	PORT HARDY LAW COURTS	50.718948	-127.508532
NANAIMO LAW COURTS	49.1681	-120.5002	SIDNEY PROVINCIAL	48.651152	-123.397845

- Output csv file

	GANGES	GOLD RIVER	PORT HARDY LAW COURTS	SIDNEY PROVINCIAL	TAHISIS	TOFINO
CAMPBELL RIVER LAW COURTS	207.364	87.95	235.061	237.883	153.308	268.992
COURTENAY LAW COURTS	162.201	130.96	280.697	192.719	196.318	223.828
DUNCAN LAW COURTS	25.758	284.594	436.381	43.443	349.952	254.265
NANAIMO LAW COURTS	55.335	234.085	385.872	85.853	299.444	203.756
PORT ALBERNI LAW COURTS	137.05	229.519	381.306	167.569	294.878	126.5
POWELL RIVER LAW COURTS	203.658	168.527	315.818	234.177	233.886	265.286

betweenPairs - Request

/distance/betweenPairs

- Similar to previous requests, with two notable differences
- [https://router.api.gov.bc.ca/distance/betweenPairs.json?](https://router.api.gov.bc.ca/distance/betweenPairs.json?fromPoints=<LIST OF POINTS>&toPoints=<LIST OF POINTS>)
fromPoints=<LIST OF POINTS>
&toPoints=<LIST OF POINTS>
- Or,
[https://router.api.gov.bc.ca/truck/distance/betweenPairs.j](https://router.api.gov.bc.ca/truck/distance/betweenPairs.json?)
[son?](https://router.api.gov.bc.ca/truck/distance/betweenPairs.json?)

API Keys

- Web apps should pass the API key in the request header
- API keys can also be passed to a script as an argument
 - `https://router.api.gov.bc.ca/optimalDirections.json?points=<LIST OF POINTS>&apikey=32kj3j3lk34n234lk234n4n3l3`
- To acquire an API key
 - Developer / personal:
<https://github.com/bcgov/gwa/wiki/Developer-Guide>
 - Production / organization:
Email DataBC: Data@gov.bc.ca

Demo #1

Advanced REST Client

<https://install.advancedrestclient.com>

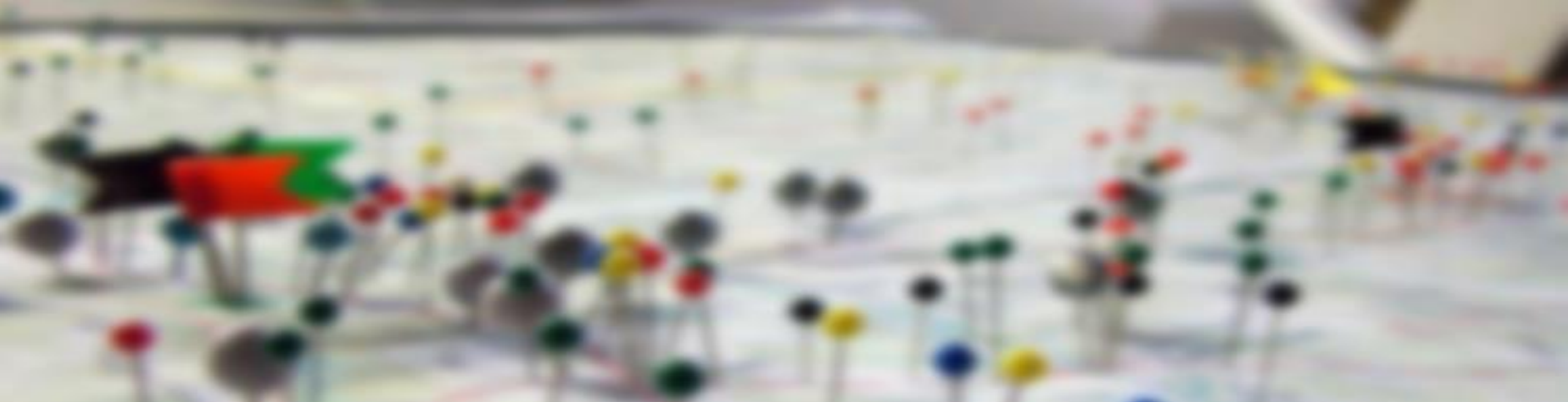
Demo #2

API Console

<https://www2.gov.bc.ca/gov/content/data/geographic-data-services/location-services/route-planner>

Python example #1

<https://github.com/bcgov/ols-devkit/tree/gh-pages/bps>

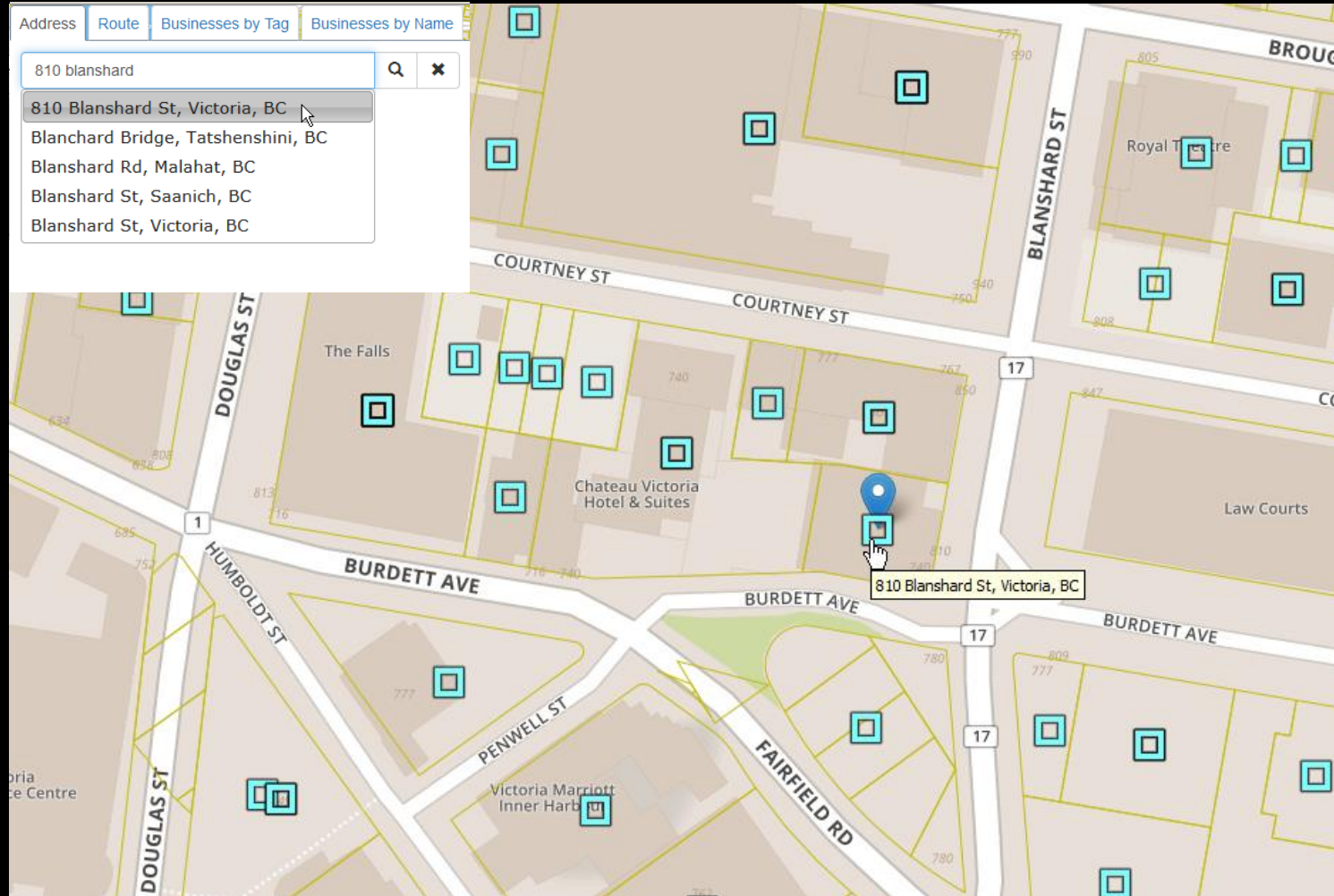


BC Address Geocoder

Overview



BC Address Geocoder



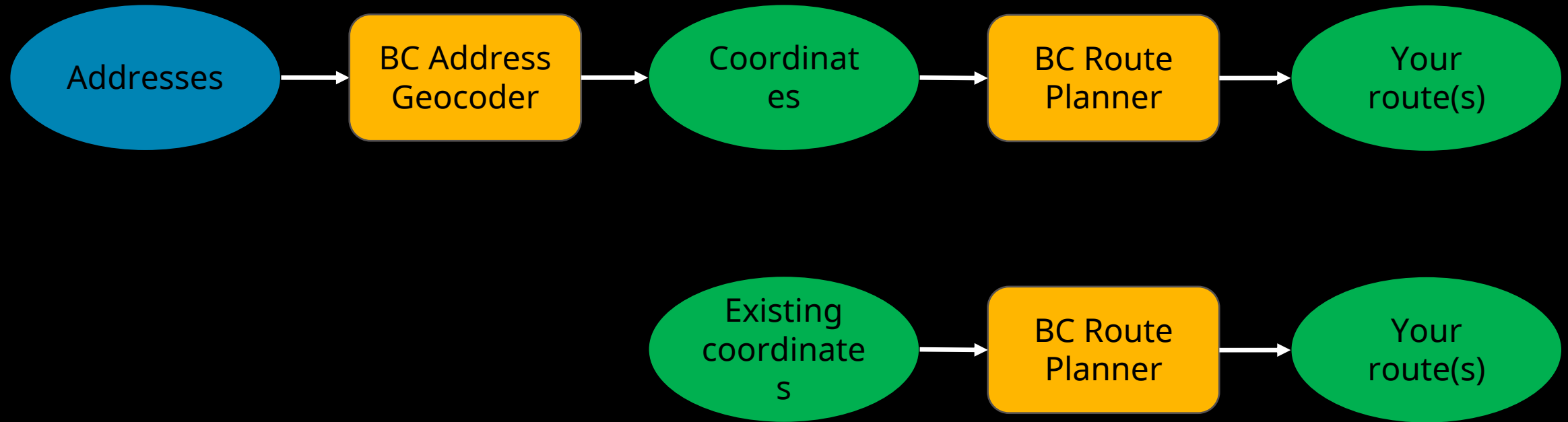
Cleaning | Correction | Completion | Geocoding | Reverse geocoding

Tools List



Application	Number of Requests	Viewer	Access
Address List Editor	1 – 1,000	Web browser	Public
Auto-completion Address Finder Widget	1	Web browser	Public
Batch Geocoder	1 - Millions	Web browser	IDIR & BCeID
Batch Address List Submitter	1 – Millions	Python	'cpf' account
Location Services in Action	1, M (within)	Web browser (modern)	Public
Physical Address Viewer	1, M (within)	Google Earth	Public
REST API	1	Web browser	Public

Sample workflow





BC Address Geocoder

Common Features and Proximity Searches



Available formats

/addresses

BC Address Geocoder

Output Formats
csv
geojson
gml
json
kml
shpz
xhtml

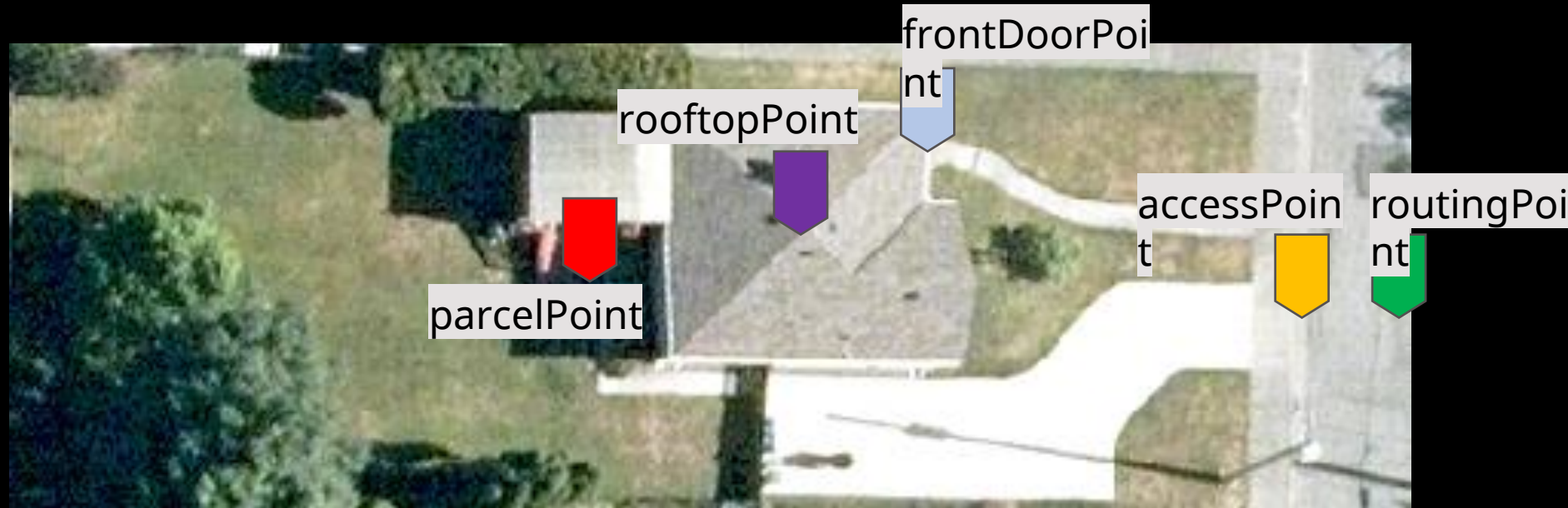
Batch Geocoder

Input Formats	Output Formats
csv	csv
GeoPackage	geojson
json	GeoPackage
shpz	gml
tsv	html
	xhtml
	json
	kml
	kmz
	shpz
	tsv
	xml

<https://geocoder.api.gov.bc.ca/addresses.json>

LocationDescriptor

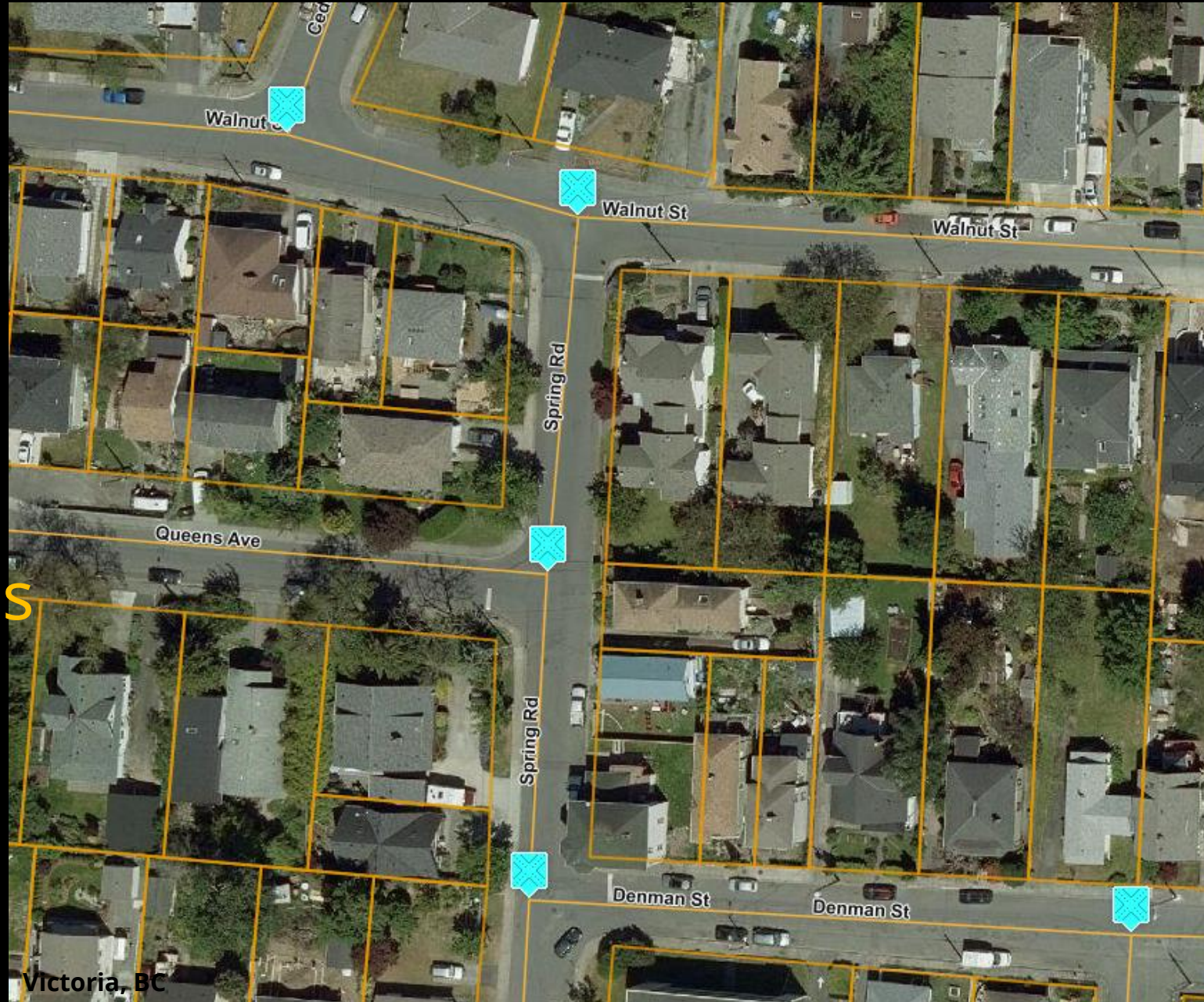
- any (default)
- **accessPoint**
- frontDoorPoint
- **parcelPoint**
- rooftopPoint
- **routingPoint**



Intersections

Types:

- 2-way
- 3-way
- 4-way
- 5+
- Dead-ends

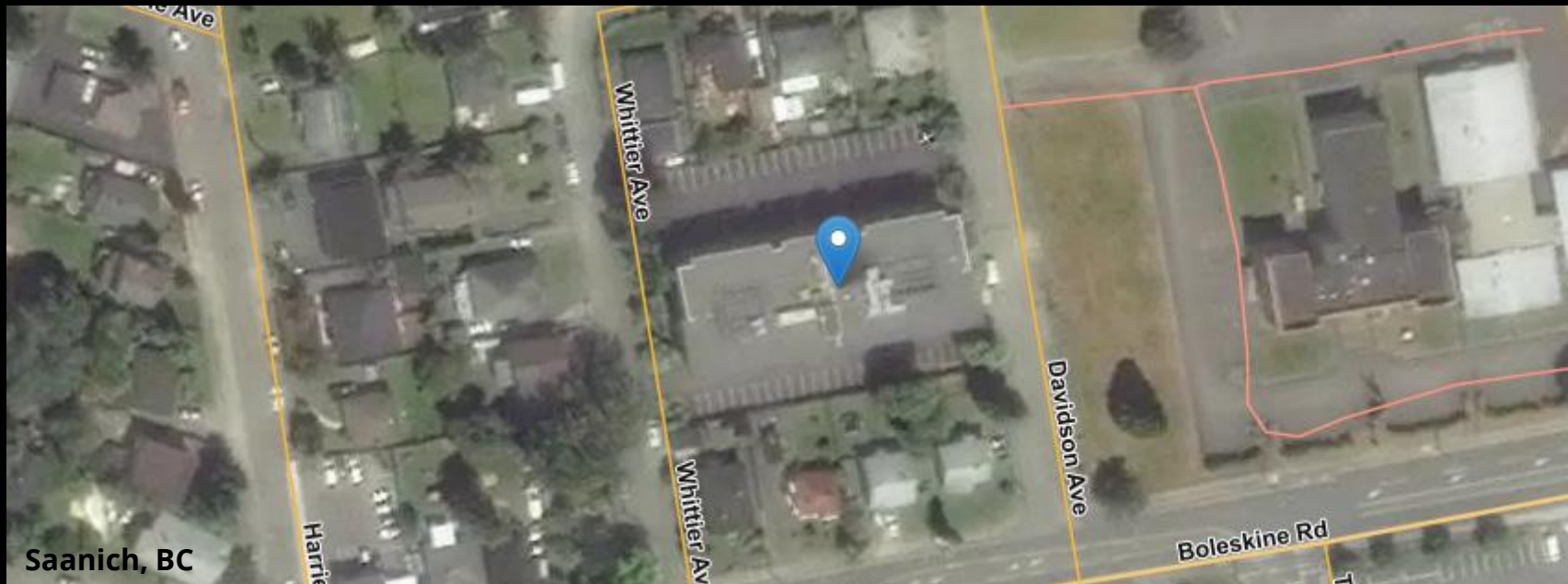


Standardize and Geocode

- Input (addressString) = 3400 Da**vd**son Av, **Victoria**
- Output
 - (fullAddress) = 3400 Da**vid**son **Ave, Saanich, BC**
 - Coordinates, faults etc. in the format of your choice

Sample Request

- [https://geocoder.api.gov.bc.ca/addresses.json?
addressString=3400 Davidson Av, Victoria
&locationDescriptor=parcelPoint&maxResults=1
&minScore=90](https://geocoder.api.gov.bc.ca/addresses.json?addressString=3400 Davidson Av, Victoria&locationDescriptor=parcelPoint&maxResults=1&minScore=90)



/addresses response

/addresses

Slide 1 of 4

```
{
  "type": "FeatureCollection",
  "queryAddress": "3400 Davdson Av, Victoria",
  "searchTimestamp": "2020-05-20 11:12:51",
  "executionTime": 2.068,
  "version": "4.0.0",
  "baseDataDate": "2020-04-14",
  "crs": {
    "type": "EPSG",
    "properties": {
      "code": 4326
    }
  },
  "interpolation": "adaptive",
  "echo": "true",
  "locationDescriptor": "parcelPoint",
  "setBack": 0,
  "minScore": 90,
  "maxResults": 1,
  "disclaimer": "http://www2.gov.bc.ca/gov/admin/disclaimer.page",
  "privacyStatement": "http://www2.gov.bc.ca/gov/admin/privacy.page",
  "copyrightNotice": "Copyright © 2020 Province of British Columbia - Open Government License",
  "copyrightLicense": "https://www2.gov.bc.ca/gov/content?id=A519A56BC2BF44E4A008B33FCF527F61",
```

/addresses response

/addresses

Slide 2 of 4

```
"features": [  
  {  
    "type": "Feature",  
    "geometry": {  
      "type": "Point",  
      "crs": {  
        "type": "EPSG",  
        "properties": {  
          "code": 4326  
        }  
      },  
      "coordinates": [  
        -123.3797449,  
        48.4529005  
      ]  
    },  
  },  
]
```


/addresses response

/addresses

Slide 3 of 4

**fullAddress vs.
addressString**
score
**= (precisionPoints) -
(faults)**
= 100 - (4 + 2 + 1)



```
"properties": {  
  "fullAddress": "3400 Davidson Ave, Saanich, BC",  
  "score": 93,  
  "matchPrecision": "CIVIC_NUMBER",  
  "precisionPoints": 100,  
  "faults": [  
    {  
      "element": "LOCALITY",  
      "fault": "isAlias",  
      "penalty": 4  
    },  
    {  
      "element": "STREET_NAME",  
      "fault": "spelledWrong",  
      "penalty": 2  
    },  
    {  
      "element": "PROVINCE",  
      "fault": "missing",  
      "penalty": 1  
    }  
  ],  
}
```

/addresses response

/addresses

Slide 4 of 4

Unique and change
monthly



```
{
  "siteName": "",
  "unitDesignator": "",
  "unitNumber": "",
  "unitNumberSuffix": "",
  "civicNumber": 3400,
  "civicNumberSuffix": "",
  "streetName": "Davidson",
  "streetType": "Ave",
  "isStreetTypePrefix": "false",
  "streetDirection": "",
  "isStreetDirectionPrefix": "",
  "streetQualifier": "",
  "localityName": "Saanich",
  "localityType": "District Municipality",
  "electoralArea": "",
  "provinceCode": "BC",
  "locationPositionalAccuracy": "high",
  "locationDescriptor": "parcelPoint",
  "siteID": "e9e4850f-b4c8-416a-9470-467f865f99a9",
  "blockID": 303247,
  "fullSiteDescriptor": "",
  "accessNotes": "",
  "siteStatus": "active",
  "siteRetireDate": "9999-12-31",
  "changeDate": "2020-04-16",
  "isOfficial": "true"
}
```

Viewing a response in HTML

← → ↻ 🔒 geocoder.api.gov.bc.ca/addresses.html?addressString=3400%20Davdson%20Av%2C%20Victor	
<h2>Geocoding Results</h2>	
queryAddress:	3400 Davdson Av, Victoria
searchTimestamp:	2020-05-20 11:18:21
executionTime:	1.682
version:	4.0.0
baseDataDate:	2020-04-14
srsCode:	4326
interpolation:	adaptive
echo:	true
locationDescriptor:	parcelPoint
setBack:	0
minScore:	90
maxResults:	1
disclaimer:	http://www2.gov.bc.ca/gov/admin/disclaimer.page
privacyStatement:	http://www2.gov.bc.ca/gov/admin/privacy.page
copyrightNotice:	Copyright © 2020 Province of British Columbia - Open Government License
copyrightLicense:	https://www2.gov.bc.ca/gov/content?id=A519A56BC2BF44E4A008B33FCF527F61
location:	-123.3797449, 48.4529005
fullAddress:	3400 Davidson Ave, Saanich, BC
score:	93
matchPrecision:	CIVIC_NUMBER
precisionPoints:	100
element:	LOCALITY
fault:	isAlias
penalty:	4
element:	STREET_NAME
fault:	spelledWrong
penalty:	2
element:	PROVINCE
fault:	missing
penalty:	1
siteName:	
unitDesignator:	
unitNumber:	
unitNumberSuffix:	
civicNumber:	3400
civicNumberSuffix:	

Proximity

Nearest Site

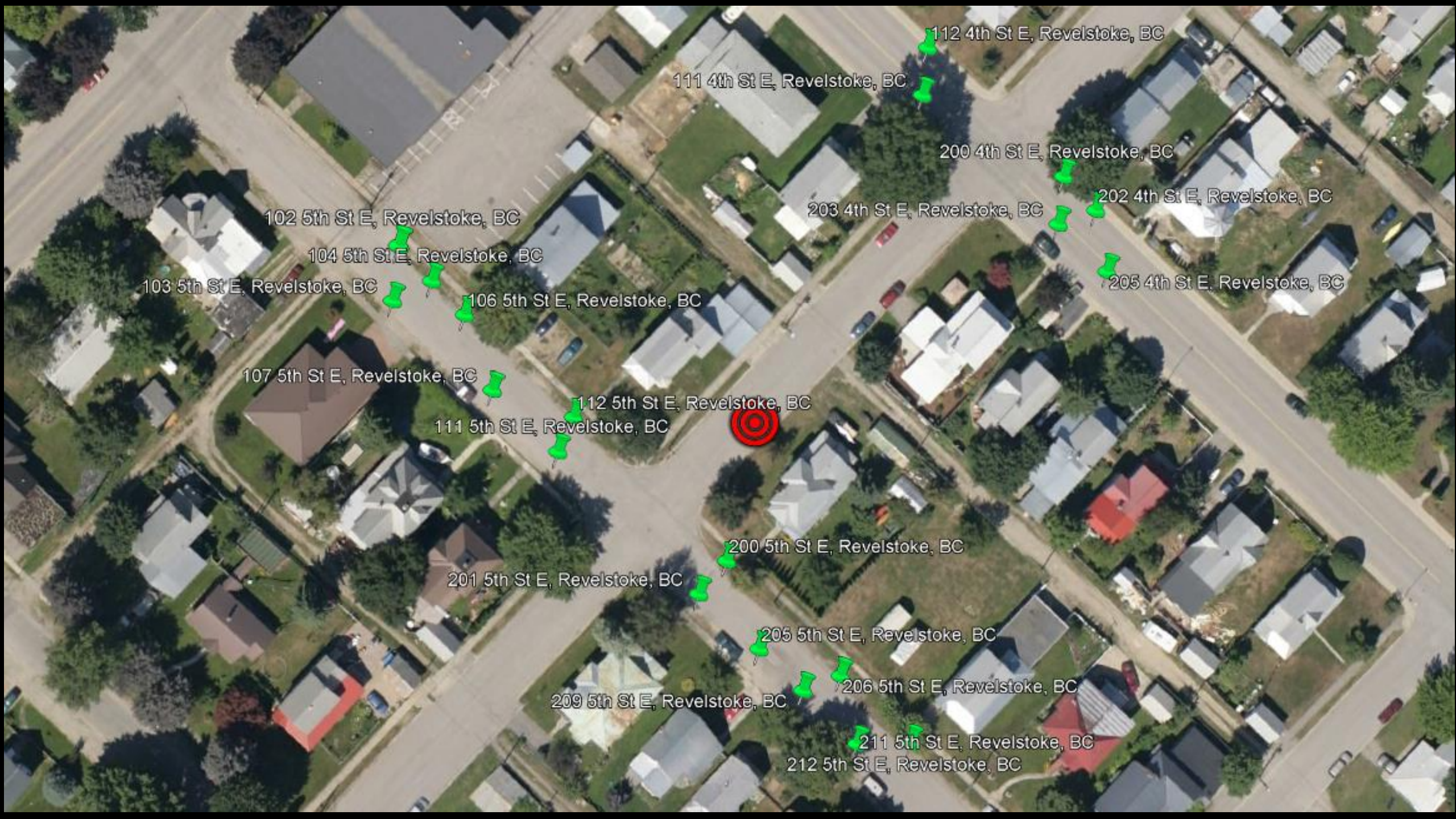
- <https://geocoder.api.gov.bc.ca/sites/nearest.kml?point=-118.19724,50.99595&maxDistance=250&locationDescriptor=accessPoint>



Proximity

Near Sites

- <https://geocoder.api.gov.bc.ca/sites/near.kml?point=-118.19724,50.99595&maxDistance=250&maxResults=20&locationDescriptor=accessPoint>



112 4th St E, Revelstoke, BC

111 4th St E, Revelstoke, BC

200 4th St E, Revelstoke, BC

202 4th St E, Revelstoke, BC

203 4th St E, Revelstoke, BC

205 4th St E, Revelstoke, BC

102 5th St E, Revelstoke, BC

104 5th St E, Revelstoke, BC

103 5th St E, Revelstoke, BC

106 5th St E, Revelstoke, BC

107 5th St E, Revelstoke, BC

112 5th St E, Revelstoke, BC

111 5th St E, Revelstoke, BC

200 5th St E, Revelstoke, BC

201 5th St E, Revelstoke, BC

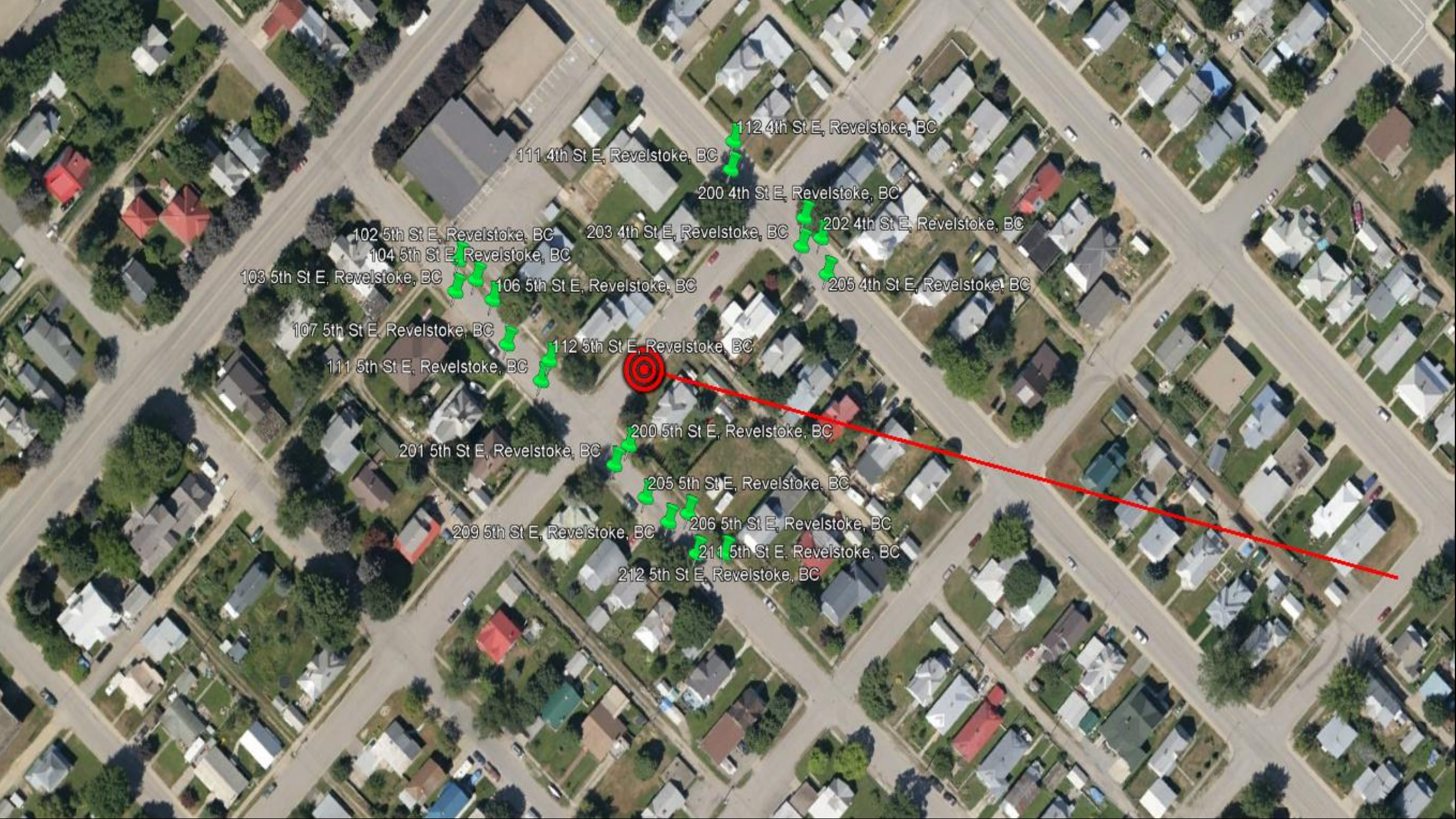
205 5th St E, Revelstoke, BC

209 5th St E, Revelstoke, BC

206 5th St E, Revelstoke, BC

211 5th St E, Revelstoke, BC

212 5th St E, Revelstoke, BC



112 4th St E, Revelstoke, BC

111 4th St E, Revelstoke, BC

200 4th St E, Revelstoke, BC

102 5th St E, Revelstoke, BC

203 4th St E, Revelstoke, BC

202 4th St E, Revelstoke, BC

104 5th St E, Revelstoke, BC

103 5th St E, Revelstoke, BC

106 5th St E, Revelstoke, BC

205 4th St E, Revelstoke, BC

107 5th St E, Revelstoke, BC

112 5th St E, Revelstoke, BC

111 5th St E, Revelstoke, BC

200 5th St E, Revelstoke, BC

201 5th St E, Revelstoke, BC

205 5th St E, Revelstoke, BC

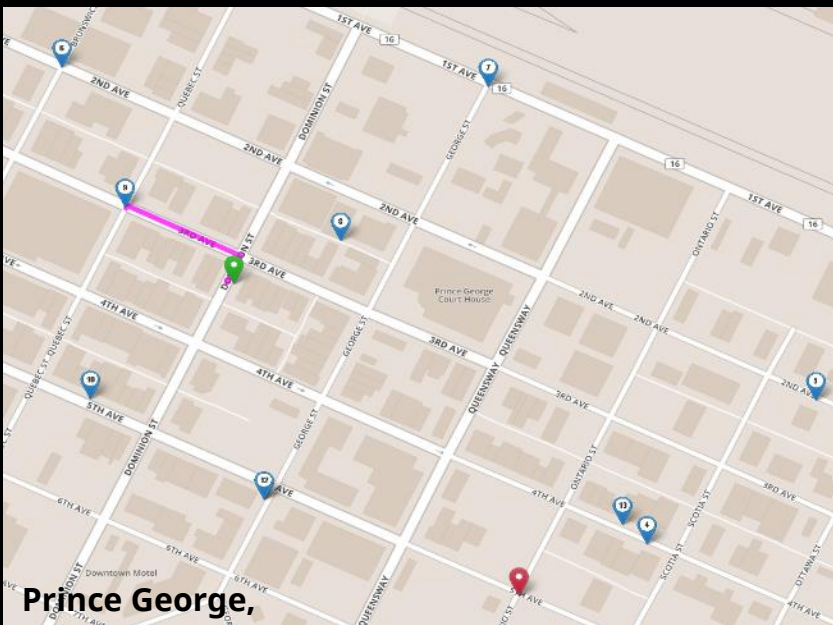
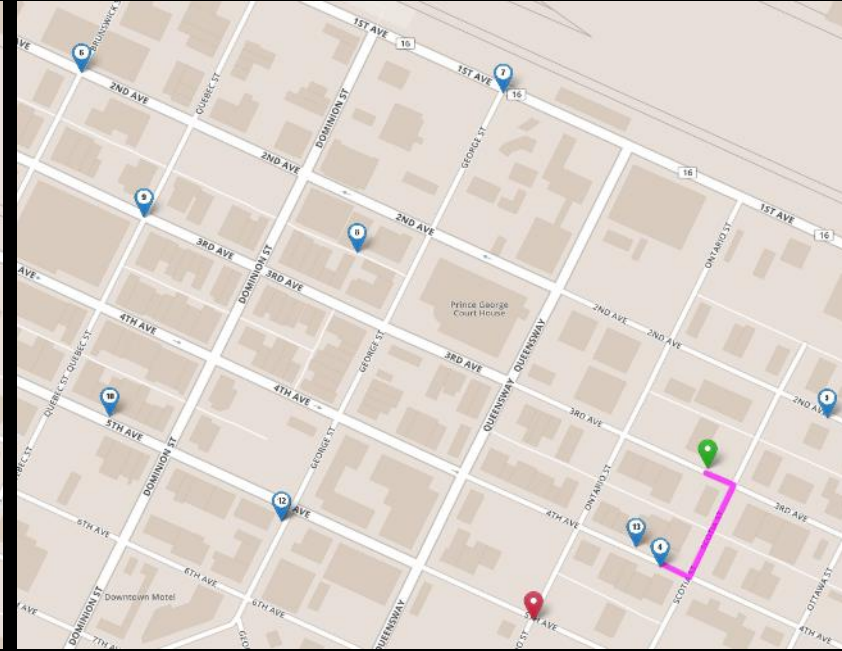
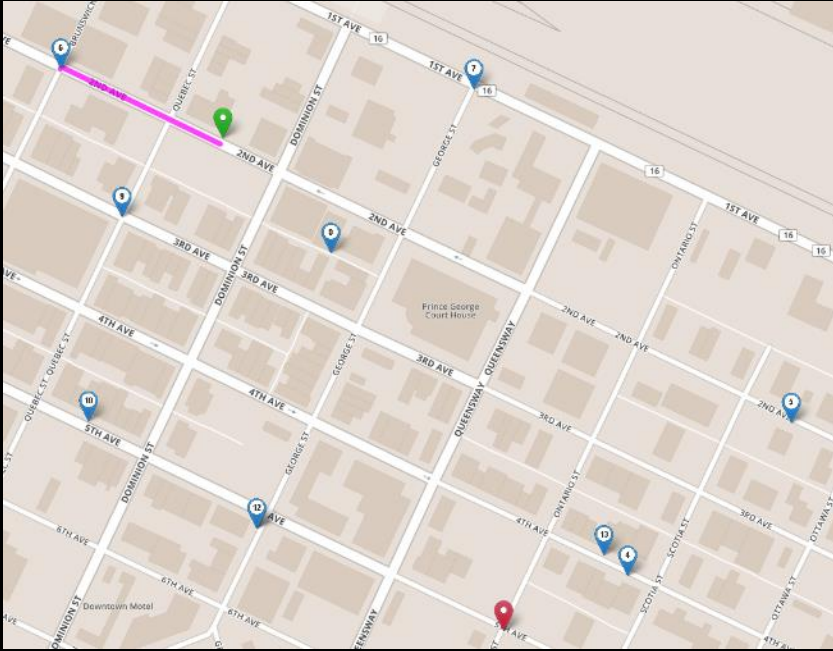
209 5th St E, Revelstoke, BC

206 5th St E, Revelstoke, BC

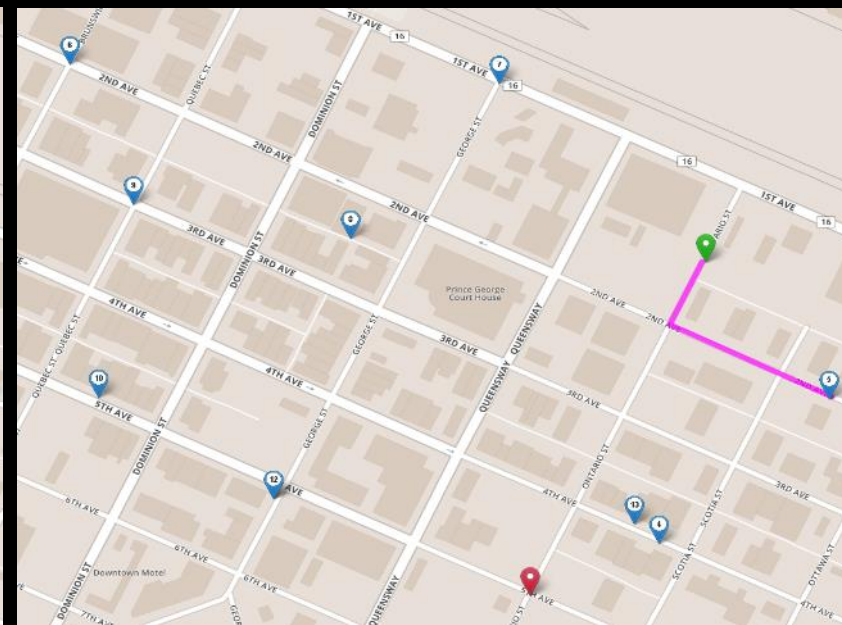
211 5th St E, Revelstoke, BC

212 5th St E, Revelstoke, BC

Proximity



Prince George,



Proximity

Sites Within a BBOX

- [https://geocoder.api.gov.bc.ca/sites/within.kml?
bbox=-119.51,49.48,-119.53,49.50&outputSRS=4326&
maxResults=100&locationDescriptor=parcelPoint](https://geocoder.api.gov.bc.ca/sites/within.kml?bbox=-119.51,49.48,-119.53,49.50&outputSRS=4326&maxResults=100&locationDescriptor=parcelPoint)

49.50, -119.53

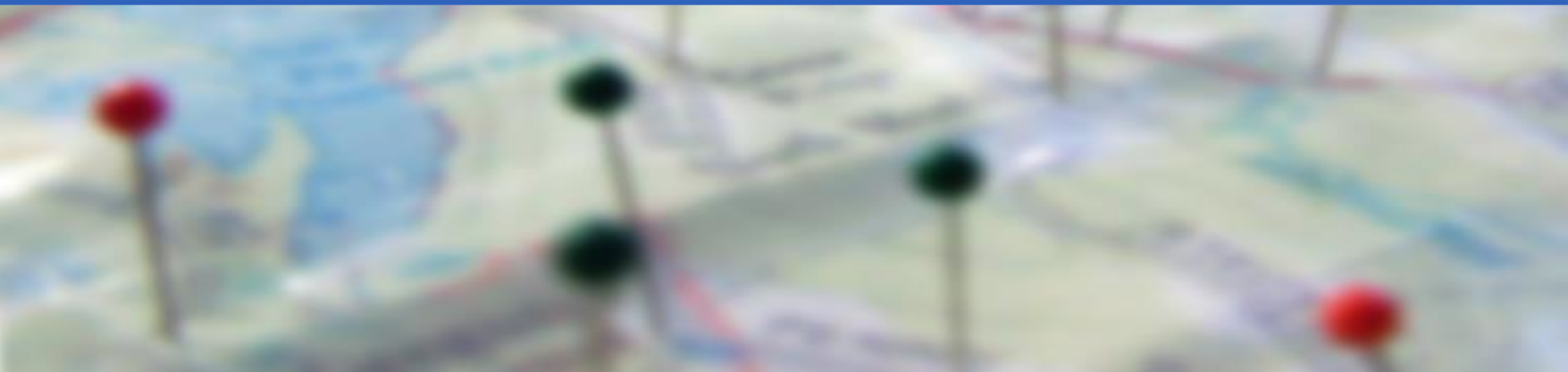
[illegible]

49.48, -



BC Address Geocoder

Batch List Submitter



Batch Address List Submitter

Accessible from the DataBC website

Hosted on GitHub

- <https://bcgov.github.io/ols-devkit/als/>

Thank you

<https://data.gov.bc.ca/>
Email: data@gov.bc.ca